



ACT Heritage Council

**BACKGROUND INFORMATION
KINGSTON CHAMBERS
(BLOCK 13 SECTION 22, KINGSTON)**

At its meeting of 11 November 2021 the ACT Heritage Council decided that the Kingston Chambers was not eligible for provisional registration.

The information contained in this report was considered by the ACT Heritage Council in assessing the nomination for the Kingston Chambers against the heritage significance criteria outlined in s10 of the *Heritage Act 2004*.

HISTORY

The first building on Block 13 Section 22 Kingston was a detached residential single storey house designed by J. W. Sproule in 1926 for John Deans. Deans was a well known resident of the early ACT, noted as a resident at Mugga, he ran for the Canberra Advisory Council, formed the ACT Master Builders Association and was its first president and was an active builder and contractor who purchased many early blocks of land in Canberra to build houses on to sell, which is what he did with Block 13. The house remained practically unchanged until 1987 when it was demolished and replaced with the Kingston Chambers.

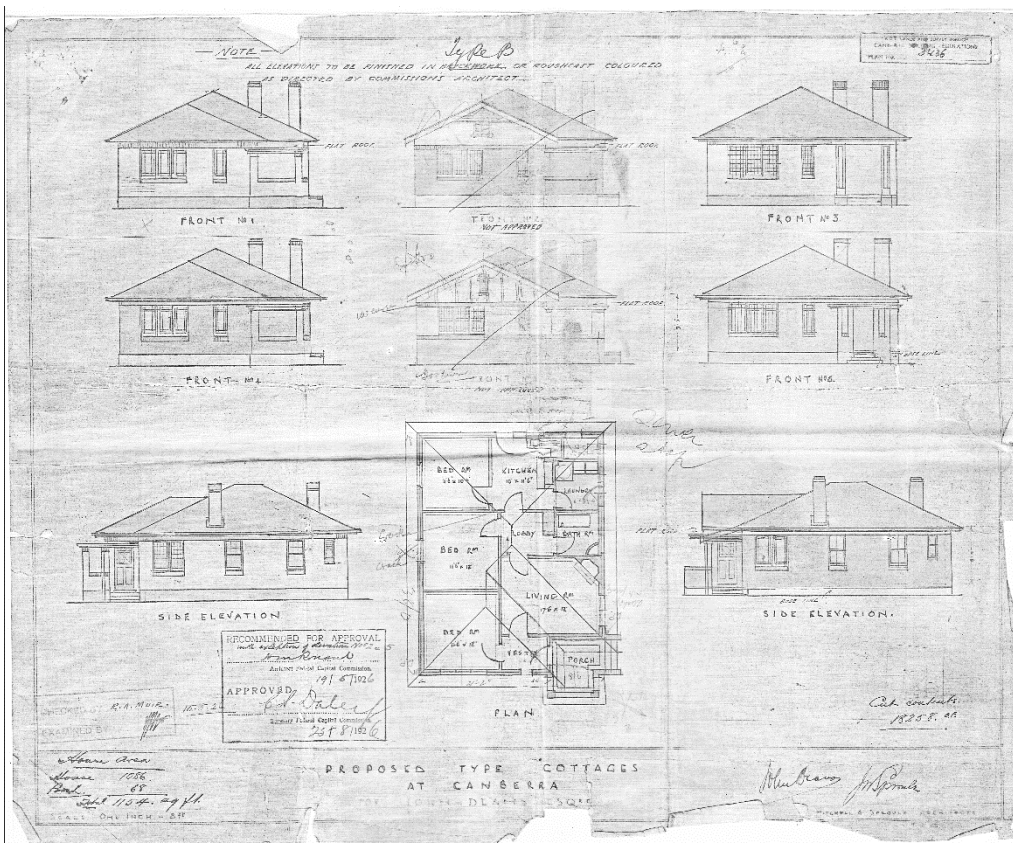


Figure 1 1926 cottage plans by J. W. Sproule.

BACKGROUND INFORMATION – KINGSTON CHAMBERS

The first house was demolished to make way for a two-storey office block with provision for medical professions. The design by Cameron Chisholm & Nicol Architects split the building in half so either side could be accessed separately through a central foyer and stairwell, allowing for four separate tenancies. The aesthetics of the building referenced the materials of the surrounding historic Kingston area with cream facebrick walls and a terracotta tile fascia that was angled to imitate a hipped roof to cover the flat steel deck. The design also incorporates repeated fenestration, symmetrical layout with a classical proportion and balance of features in a modern pastiche of Georgian style architecture.

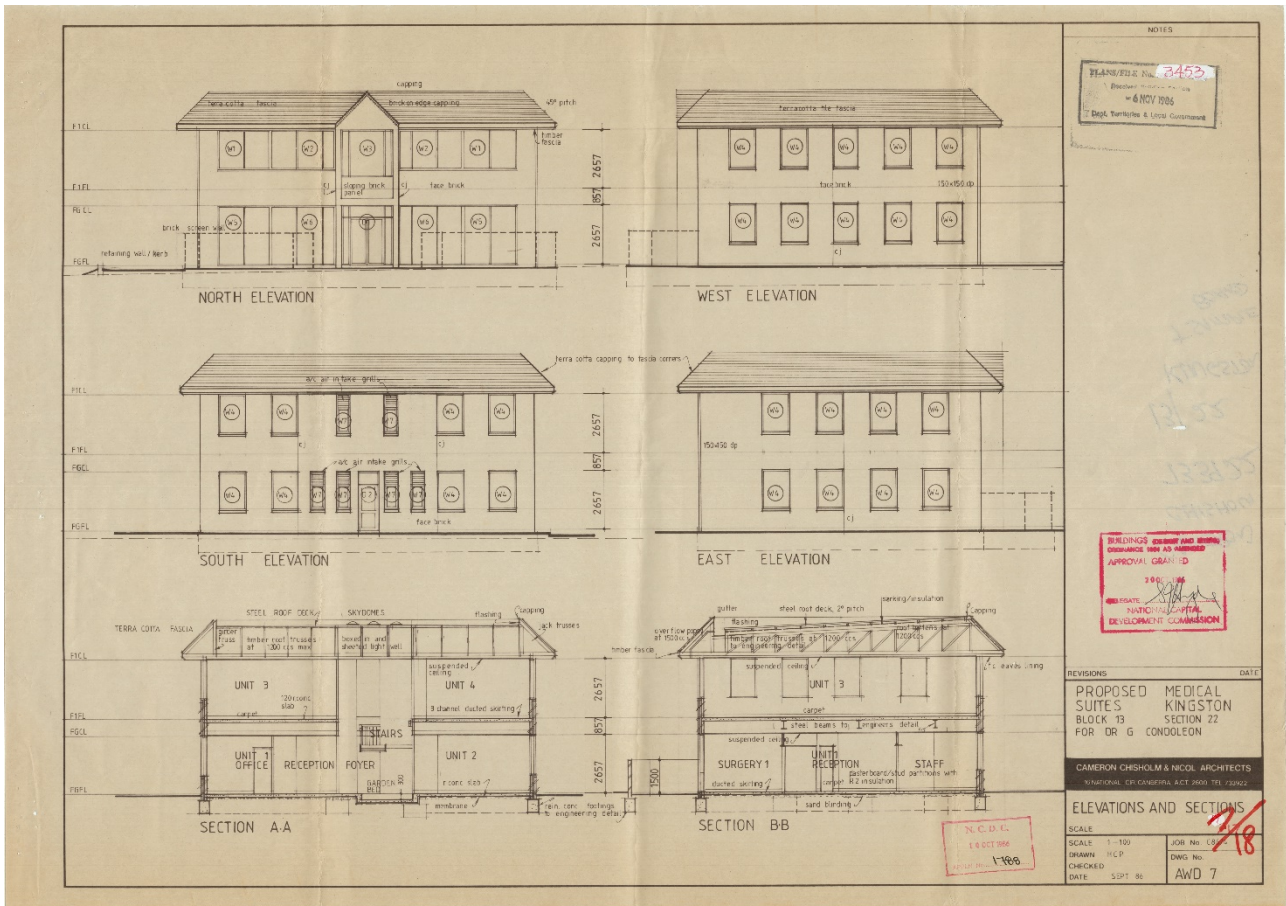


Figure 2 Cameron Chisholm & Nicol Architects elevations and section of Kingston Chambers, 1986.

BACKGROUND INFORMATION – KINGSTON CHAMBERS

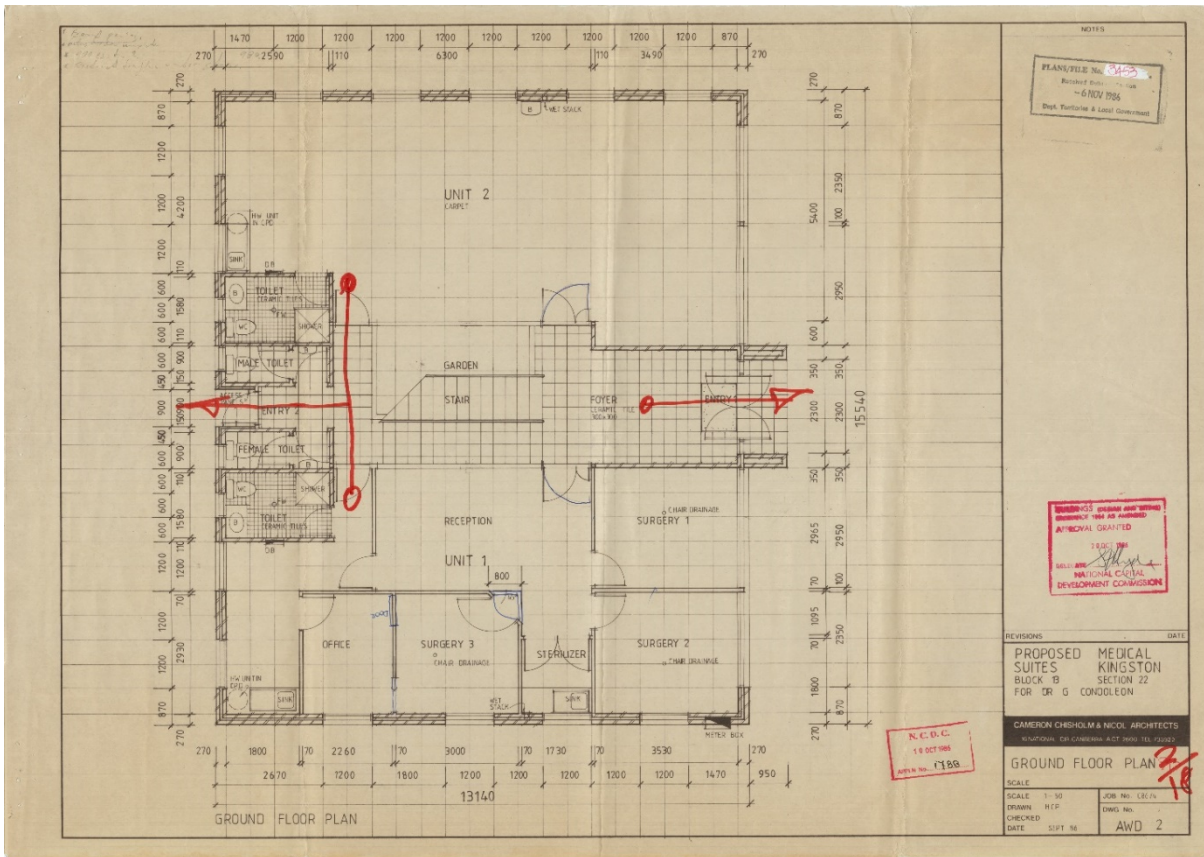


Figure 3 Cameron Chisholm & Nicol Architects ground floor plan of Kingston Chambers, 1986.

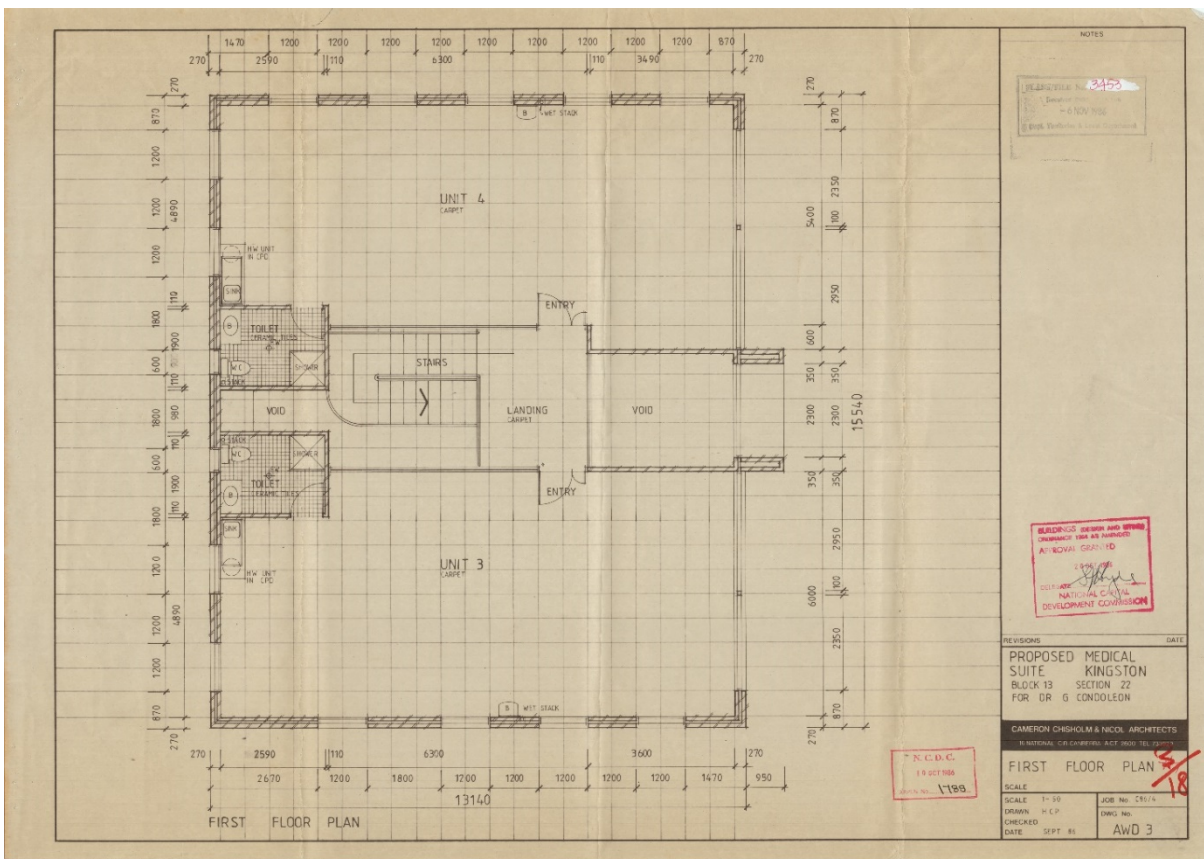


Figure 4 Cameron Chisholm & Nicol Architects second floor plan of Kingston Chambers, 1986.

BACKGROUND INFORMATION – KINGSTON CHAMBERS

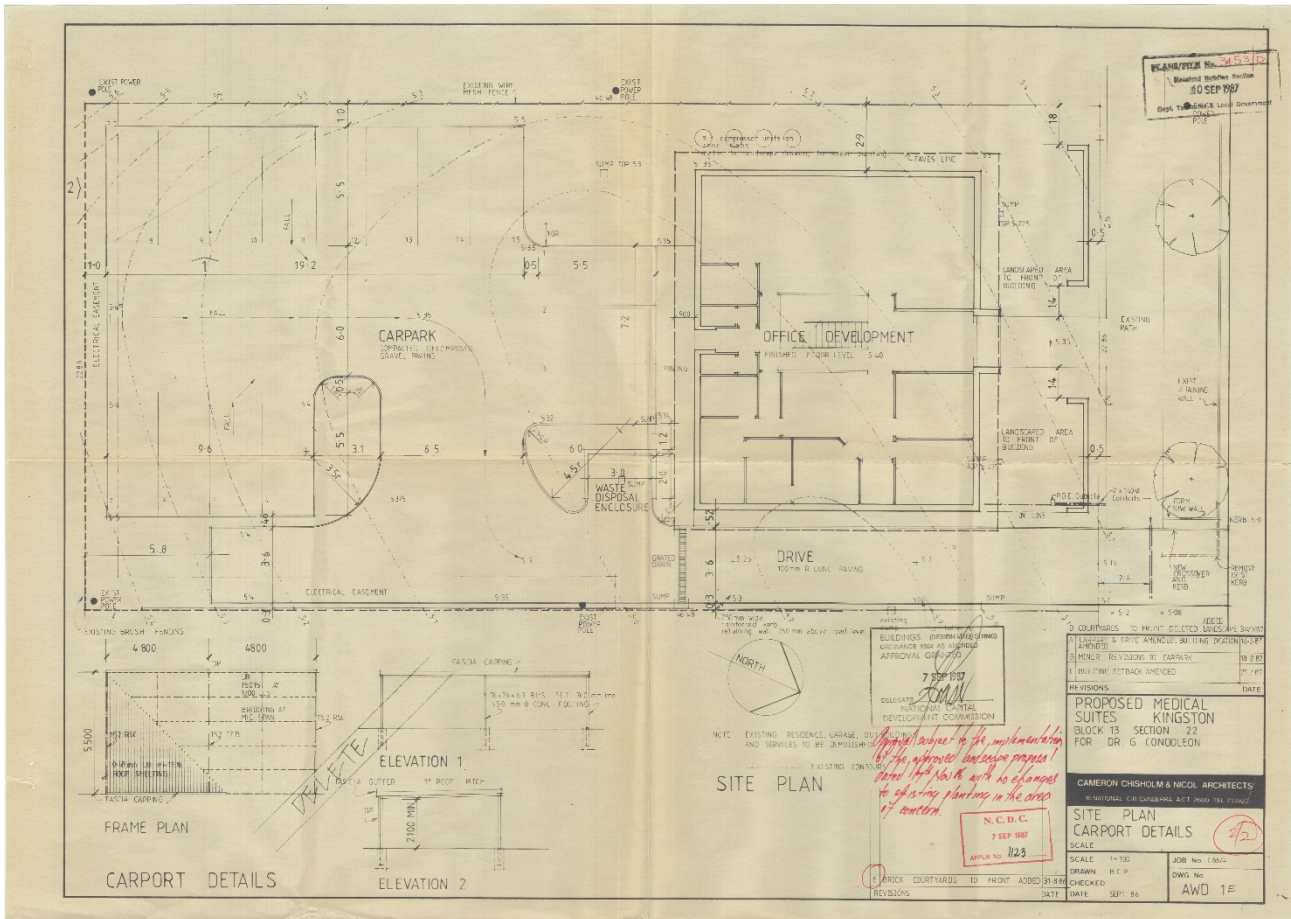


Figure 5 Cameron Chisholm & Nicol Architects site plan of Kingston Chambers, 1986.

BACKGROUND INFORMATION – KINGSTON CHAMBERS

SITE PLAN



Image 1 Kingston Chambers site boundary

BACKGROUND INFORMATION – KINGSTON CHAMBERS

IMAGES



Figure 6 Kingston Chambers front facade (ACT Heritage 2020)



Figure 7 Kingston Chambers front and north side facade oblique angle (ACT Heritage 2020)

BACKGROUND INFORMATION – KINGSTON CHAMBERS



Figure 8 Kingston Chambers front and south side facade oblique angle (ACT Heritage 2020)