

SURVEY DATE: 28/4/22

OBSERVED HANDRAIL RL = 559.954
 OBSERVED FLOOR RL = 558.727
 GROUND FL = 551.990

SURVEY DATE: 28/4/22

OBSERVED BALCONY FFL = 560.590

RESULT: BALCONY IS 636mm ABOVE
 NEST EQUIP. HANDRAIL

DRAWN BY

LONERGAN SURVEYING

REGISTERED AND ENGINEERING SURVEYORS
 (LAND DEVELOPMENT | CONSTRUCTION | INFRASTRUCTURE)

4/70 Dacre St
 Mitchell ACT 2911

Jude Lonergan
 Mobile: 0420 582 010
 Email: jude@lonergansurveying.com

www.lonergansurveying.com

PROJECT

EDGEWORTH PARADE PLAYGROUND

SCALE:

1: 350 @ A3

DATE:

28/4/22

DESCRIPTION:

**EDGEWORTH PARADE PLAYGROUND
 NEST EQUIP. WAE vs BALCONY**

DRAWING NUMBER:

1

DRAWING NAME:

WAE-NEST-BALC

LEGEND.

615-741 ~~(144w)~~ NEW STREETLIGHT COLUMN

615-741 ~~(EXT)~~ EXISTING STREETLIGHT COLUMN

SL EXISTING STREETLIGHT ELECTRICAL CABLE

SL NEW STREETLIGHT ELECTRICAL CABLE 6sqmm CU XLPE/PVC 4 CORE IN 50Ø ORANGE CONDUIT

615-741 ~~(REM)~~ STREETLIGHT CABLE TO BE REMOVED

621-111 ASSET NUMBER

X CABLE JOINT

PROJECT NOTES:-
ALL CONDUITS 50mm ORANGE HD INSTALLED MINIMUM 600mm DEEP.

Check	Drawing Criteria to TCCS Reference Document 8
✓	Drawing(s) have been submitted in the following formats: DWG and PDF
✓	The CAD drawing(s) and PDF are the same
✓	CAD drawing units are in metres
✓	Drawing(s) are spatially drawn in the Stromlo coordinates (SGC)
✓	Table for street light columns with Stromlo coordinates is included on the drawing(s)
✓	Street light locations include asset numbers
✓	Block insertion points are correct and in Stromlo Coordinates
✓	Layers isolation is correct
✓	Point assets are as actual blocks
	Other Design Criteria
✓	Cable offsets are indicated on the drawing(s)
	Road crossing dimensions are indicated on the drawing(s)
✓	Connection point for new street light circuits to ActewAGL's network are indicated on the drawing(s)
✓	Column types heights and make with type of base are indicated on the drawing(s)
✓	Illuminaires type & make are indicated on the drawing(s)

New Streetlight Schedule				
Asset Number	Easting	Northing	Column Height and Type	Luminaire Type
911-1057	202457.784	600257.347	NEW 6.5m COLUMN WITH 0.15m OUTREACH AND LADDER RACKS	NEW WE-EF VFL530 108-1880 24W/P65/4K/JP66 ON RE1-530 111-0040 BRACKET
911-1058	202474.200	600264.740	NEW 6.5m COLUMN WITH 0.15m OUTREACH AND LADDER RACKS	NEW WE-EF VFL530 108-1880 24W/P65/4K/JP66 ON RE1-530 111-0040 BRACKET
911-1059	202497.110	600267.461	NEW 6.5m COLUMN WITH 0.15m OUTREACH AND LADDER RACKS	NEW WE-EF VFL530 108-1880 24W/P65/4K/JP66 ON RE1-530 111-0040 BRACKET
911-1060	202519.362	600269.890	NEW 6.5m COLUMN WITH 0.15m OUTREACH AND LADDER RACKS	NEW WE-EF VFL530 108-1880 24W/P65/4K/JP66 ON RE1-530 111-0040 BRACKET
911-1061	202537.215	600271.255	NEW 6.5m COLUMN WITH 0.15m OUTREACH AND LADDER RACKS	NEW WE-EF VFL530 108-1880 24W/P65/4K/JP66 ON RE1-530 111-0040 BRACKET
911-1062	202534.742	600259.683	NEW 6.5m COLUMN WITH 0.15m OUTREACH AND LADDER RACKS	NEW WE-EF VFL530 108-1880 24W/P65/4K/JP66 ON RE1-530 111-0040 BRACKET
911-1063	202544.188	600254.598	NEW 6.5m COLUMN WITH 0.15m OUTREACH AND LADDER RACKS	NEW WE-EF VFL530 108-1880 24W/P65/4K/JP66 ON RE1-530 111-0040 BRACKET
911-1064	202542.734	600240.293	NEW 6.5m COLUMN WITH 0.15m OUTREACH AND LADDER RACKS	NEW WE-EF VFL530 108-1880 24W/P65/4K/JP66 ON RE1-530 111-0040 BRACKET
911-1065	202532.692	600231.029	NEW 6.5m COLUMN WITH 0.15m OUTREACH AND LADDER RACKS	NEW WE-EF VFL530 108-1880 24W/P65/4K/JP66 ON RE1-530 111-0040 BRACKET
911-1066	202508.579	600239.968	NEW 6.5m COLUMN WITH 0.15m OUTREACH AND LADDER RACKS	NEW WE-EF VFL530 108-1880 24W/P65/4K/JP66 ON RE1-530 111-0040 BRACKET
911-1067	202513.902	600226.514	NEW 6.5m COLUMN WITH 0.15m OUTREACH AND LADDER RACKS	NEW WE-EF VFL530 108-1880 24W/P65/4K/JP66 ON RE1-530 111-0040 BRACKET
911-1068	202496.025	600226.219	NEW 6.5m COLUMN WITH 0.15m OUTREACH AND LADDER RACKS	NEW WE-EF VFL530 108-1880 24W/P65/4K/JP66 ON RE1-530 111-0040 BRACKET
911-1069	202489.939	600232.741	NEW 6.5m COLUMN WITH 0.15m OUTREACH AND LADDER RACKS	NEW WE-EF VFL530 108-1880 24W/P65/4K/JP66 ON RE1-530 111-0040 BRACKET
911-1070	202473.522	600225.174	NEW 6.5m COLUMN WITH 0.15m OUTREACH AND LADDER RACKS	NEW WE-EF VFL530 108-1880 24W/P65/4K/JP66 ON RE1-530 111-0040 BRACKET
911-1071	202476.718	600235.281	NEW 6.5m COLUMN WITH 0.15m OUTREACH AND LADDER RACKS	NEW WE-EF VFL530 108-1880 24W/P65/4K/JP66 ON RE1-530 111-0040 BRACKET
911-1072	202480.011	600242.038	NEW 6.5m COLUMN WITH 0.15m OUTREACH AND LADDER RACKS	NEW WE-EF VFL530 108-1880 24W/P65/4K/JP66 ON RE1-530 111-0040 BRACKET
911-1073	202478.899	600248.842	NEW 6.5m COLUMN WITH 0.15m OUTREACH AND LADDER RACKS	NEW WE-EF VFL530 108-1880 24W/P65/4K/JP66 ON RE1-530 111-0040 BRACKET
911-1074	202488.808	600259.547	NEW 6.5m COLUMN WITH 0.15m OUTREACH AND LADDER RACKS	NEW WE-EF VFL530 108-1880 24W/P65/4K/JP66 ON RE1-530 111-0040 BRACKET

Modified Streetlight Schedule				
Asset Number	Easting	Northing	Column Height and Type	Luminaire Type
911-536	202509.751	600211.437	COLUMN RELOCATED. USE EXISTING COLUMN	LUMINAIRE RELOCATED. USE EXISTING LUMINAIRE

STREETLIGHT WAE

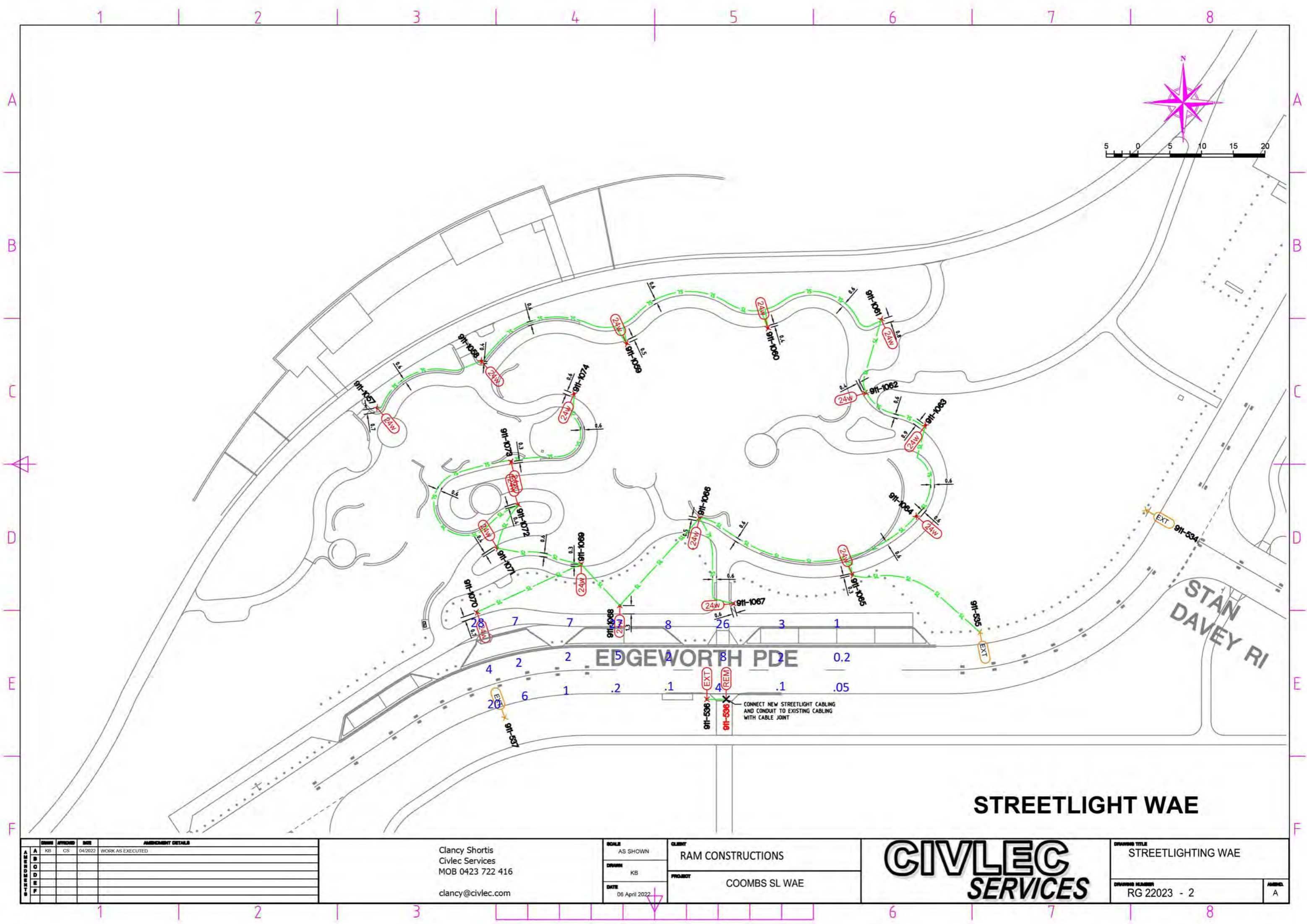
REV	DATE	BY	APP'D	DESCRIPTION
A				
B				
C				
D				
E				
F				

Clancy Shortis
Civlec Services
MOB 0423 722 416
clancy@civlec.com

SCALE AS SHOWN	CLIENT RAM CONSTRUCTIONS
CUSTOMER KB	PROJECT COOMBS SL WAE
DATE 06 April 2022	



DRAWING TITLE STREETLIGHTING WAE	APP'D. A
DRAWING NUMBER RG 22023 - 1	



REV	DATE	BY	DESCRIPTION
A	04/2022	CS	WORK AS EXECUTED
B			
C			
D			
E			
F			

Clancy Shortis
 Civlec Services
 MOB 0423 722 416
 clancy@civlec.com

SCALE
 AS SHOWN
 DRAWN
 KB
 DATE
 06 April 2022

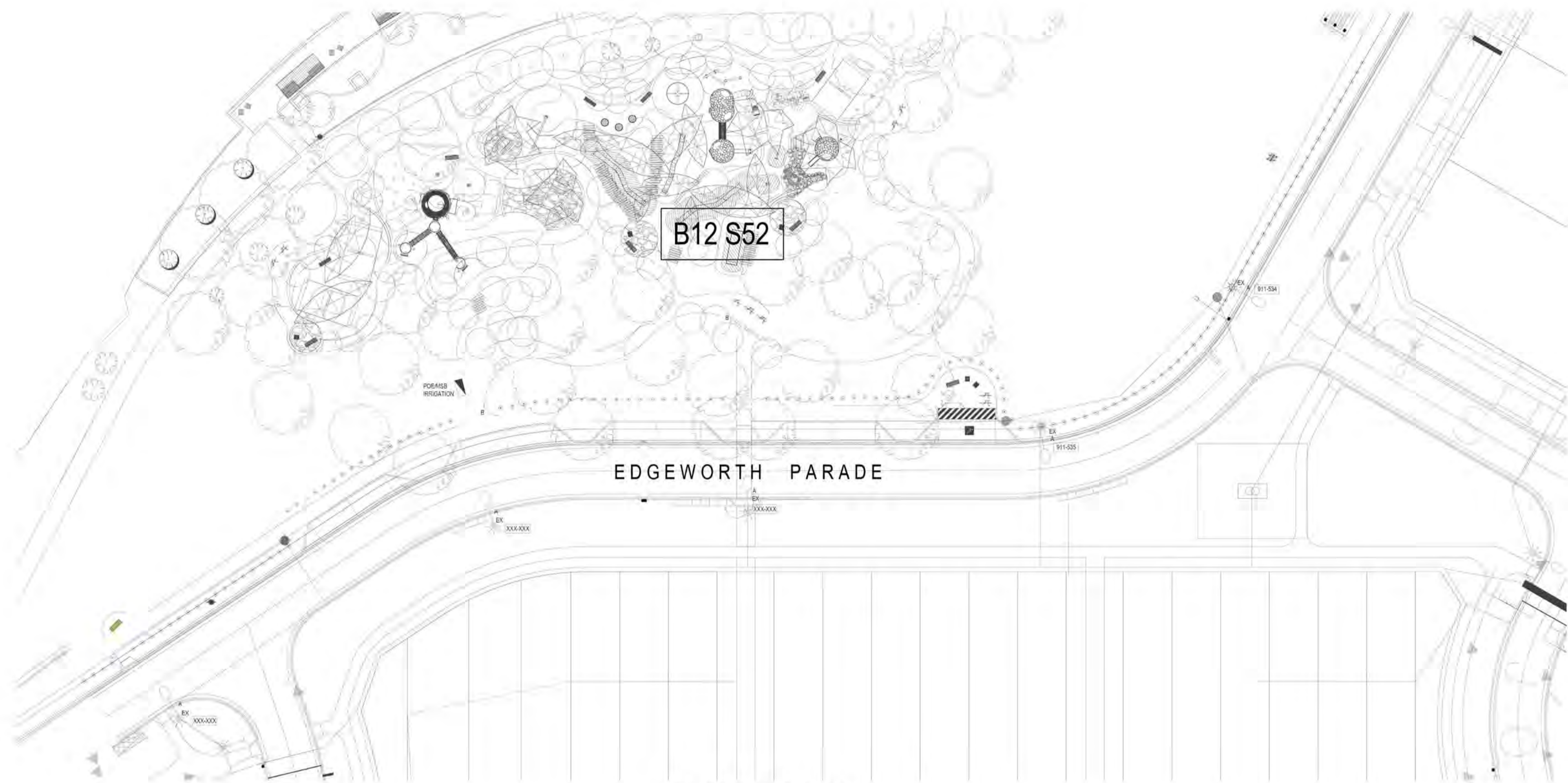
CLIENT
 RAM CONSTRUCTIONS
 PROJECT
 COOMBS SL WAE



DRAWING TITLE
 STREETLIGHTING WAE
 DRAWING NUMBER
 RG 22023 - 2
 AMEND.
 A

COOMBS EDGEWORTH PARADE PLAYGROUND

ELECTRICAL SERVICES



SITE PLAN



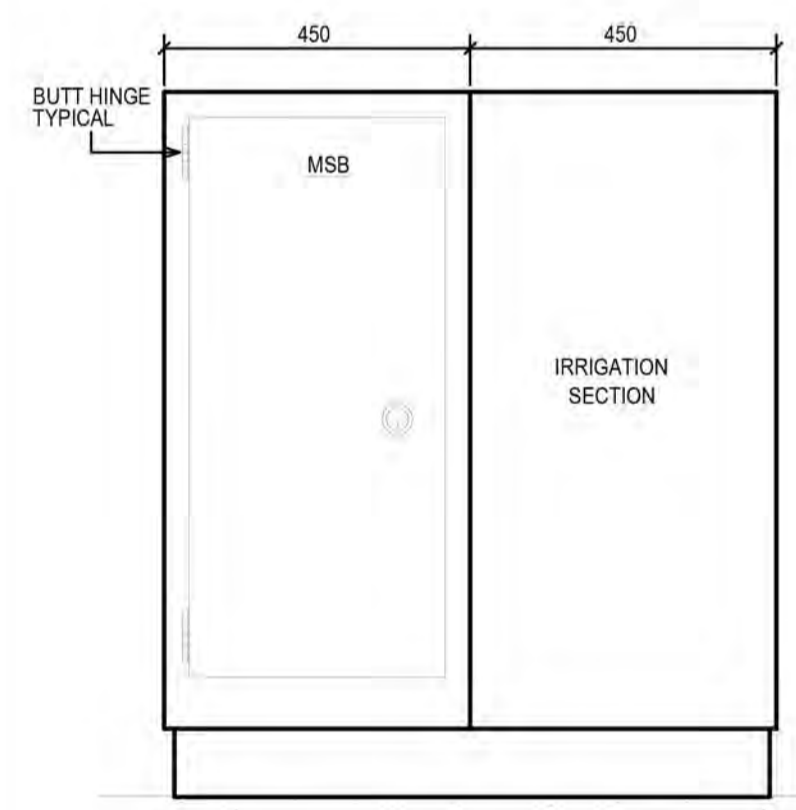
LUMINAIRE TYPE 'A' & 'B'

LEGEND

- EX A EXISTING POLE AND LUMINAIRE
- B 6.5M POLE WITH 0.15 OUTREACH ARM MODIFICATION AND LADDER RACKS SILVER WITH CHARCOAL TRIM IN ACCORDANCE WITH TCCS DRAWINGS DS12-03-20 AND DS12-02-01 WITH WEEF 108-1880 24 WATT LED SILVER TO TCCS SPECIFICATION. PROVIDE 10mA RCD AT EACH POLE.
- SHELTER LIGHTING, TOILET LIGHTING OR IRRIGATION CONTROLLER SUPPLY COORDINATE WITH SHELTER CONTRACTOR FOR CABLE ROUTE THROUGH STRUCTURES TO LIGHTING. LIGHTING BY SHELTER CONTRACTOR. ALLOW TO CONNECT ALL LIGHTING
- BBQ 2 OFF 15A WEATHERPROOF OUTLETS WITHIN BBQ STRUCTURE. COORDINATE WITH BBQ SUPPLIER
- NEW STREETLIGHT CABLE AND CONDUITS - 16MM² CORE CABLING. MIN DEPTH 600mm. PROVIDE ADDITIONAL 1x32mm WHITE CONDUIT BETWEEN EACH NEW POLE IN PLAYGROUND AREA. EXTEND TO ADJACENT POE/MSB. FOR FUTURE CCTV.
- EVOENERGY SUPPLY CONDUIT
- E-E-E-E-E ELECTRICAL SUPPLY CONDUITS AND CABLE
- XXX-XXX TCCS ASSET TAG, REQUIRED ON ALL NEW POLES CONNECTED TO STREET CIRCUIT
- SWITCHBOARD - REFER TO DRAWING FOR DETAILS. COLOUR WOODLAND GREY.
- CABLE PIT WITH GALVANISED TRAFFICABLE LID. ACO TYPE 33 MINIMUM

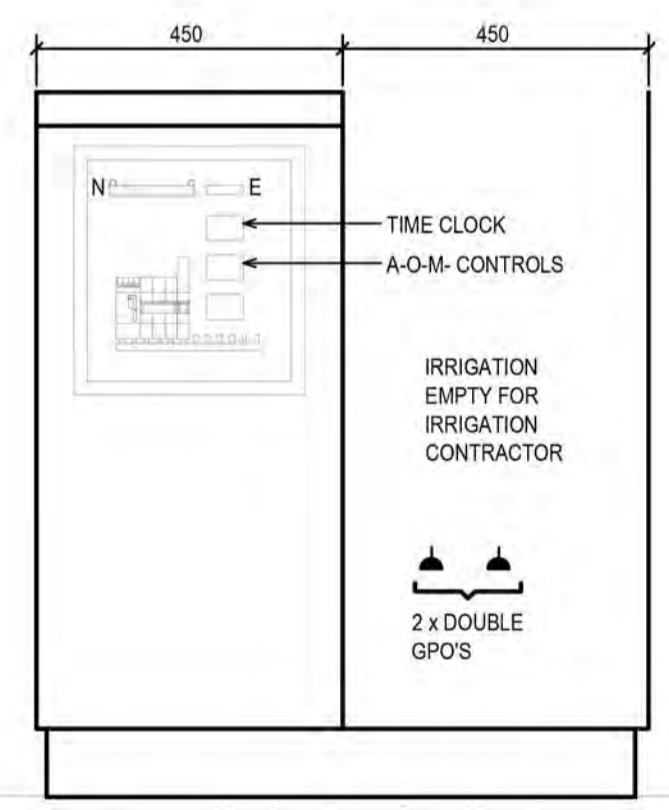
SPECIFICATION NOTES

1. ALL WORK TO BE CARRIED OUT IN ACCORDANCE WITH SECTION 14 - STREET LIGHTING OF THE STANDARD SPECIFICATION FOR URBAN INFRASTRUCTURE WORKS AND AUSTRALIAN STANDARDS, EVOENERGY NETWORKS REQUIREMENTS, AS3000 AND AS3008
2. CABLE ROUTES FOR NEW LIGHT CABLING TO BE LOCATED TO AVOID DAMAGE TO EXISTING TREE ROOTS, SUBSOIL DRAINS, EXISTING AND PROPOSED PATHWAYS AND OTHER SERVICES. REFER TO LANDSCAPE DRAWINGS FOR EXACT LOCATIONS OF ALL EQUIPMENT.
3. CONTRACTOR TO PROVIDE ALL PEDESTRIAN CONTROL MANAGEMENT DEVICES PRIOR TO ANY WORKS COMMENCING ON SITE.
4. CONTRACTOR TO CONTACT TCCS IN RELATION TO WORKING ON THE EXISTING ELECTRICAL CIRCUIT CABLES AND PAY ANY ASSOCIATED ACCESS AND DISCONNECTION FEES.
5. CONTRACTOR TO LOCATE EXISTING ELECTRICAL CIRCUIT CABLES AND DETERMINE LOCATION OF ORIGIN AND AS REQUIRED, ISOLATE AND MAKE SAFE DURING WORKS.
6. CONTRACTOR TO CONTACT TCCS FOR PROVISION OF THE STREET LIGHT COLUMN IDENTIFICATION PLATES AND INSTALL ONTO THE COLUMNS. CONTACT TCCS FOR TAGS AT BEGINNING OF PROJECT. REFER TO SMARTFORM WEBSITE.
7. CONTRACTOR TO COMPLETE ALL NECESSARY NOTICES, PAY ALL FEES AND CHARGES AND ARRANGE FOR ALL INSPECTIONS AND TESTS REQUIRED BY TCCS STREET LIGHT MAINTENANCE MANAGER, ACTPLA AND ASSET ACCEPTANCE, ROADS ACT. CONTRACTOR TO PROVIDE EVIDENCE OF THE SUBMISSION TO ACTPLA TO THE PROJECT SUPERINTENDENT.
8. CONTRACTOR TO PROVIDE PROJECT SUPERINTENDENT WITH A MARKED UP PLAN SHOWING AS EXECUTED WORKS IN ACCORDANCE WITH CLAUSE 14.7.10 OF SECTION 14 - STREET LIGHTING OF THE STANDARD SPECIFICATION FOR URBAN INFRASTRUCTURE WORKS, INCLUDING LOCATIONS OF EXISTING ELECTRICAL CIRCUITRY CABLING, NEW STREET LIGHT COLUMN POSITIONS AND NEW ELECTRICAL CABLING. THIS INFORMATION SHOULD INCLUDE DIMENSIONS SHOWING THE EXACT CABLE/CONDUIT LOCATIONS. THE INFORMATION IS TO BE PROVIDED IN A HARD COPY PLAN AND A CD WITH THE INFORMATION IN AUTOCAD FORMAT.
9. THE CONTRACTOR TO MAKE GOOD ANY DISTURBED AREAS AND LANDSCAPING/PAVING TO THE APPROVAL OF THE PROJECT SUPERINTENDENT.
10. COMPLETE ALL ELECTRICAL WIRING, INCLUDING EXTENDING/RELOCATING EXISTING STREET LIGHT CABLES IN THE NEW COLUMNS AND TERMINATE ON TERMINAL BLOCK AS REQUIRED IN ACCORDANCE WITH AS3000 - 2018 AND TAMS DS12 SERIES DRAWINGS.
11. CONTRACTOR TO ENSURE THAT ALL NEW COLUMNS ARE EARTHED IN ACCORDANCE WITH THE REQUIREMENTS OF AS3000 - 2018, TAMS DRAWING DS 12-01-20, AND ACTPLA.
12. AS REQUIRED THE CONTRACTOR IS TO EXCAVATE AND INSTALL 50MM UPVC ORANGE ELECTRICAL CONDUITS. EXCAVATIONS ARE TO BE UNDERTAKEN BY EITHER OPEN TRENCHING OR UNDER BORING AS NOTED.
13. PROVIDE SITE SWITCHBOARDS AS SHOWN ON THE DRAWING. LIAISE WITH EVOENERGY FOR ALL WORKS. EVOENERGY COSTS FOR SITE SUPPLY TO BE PROVIDED FOR PAYMENT BY THE CLIENT.



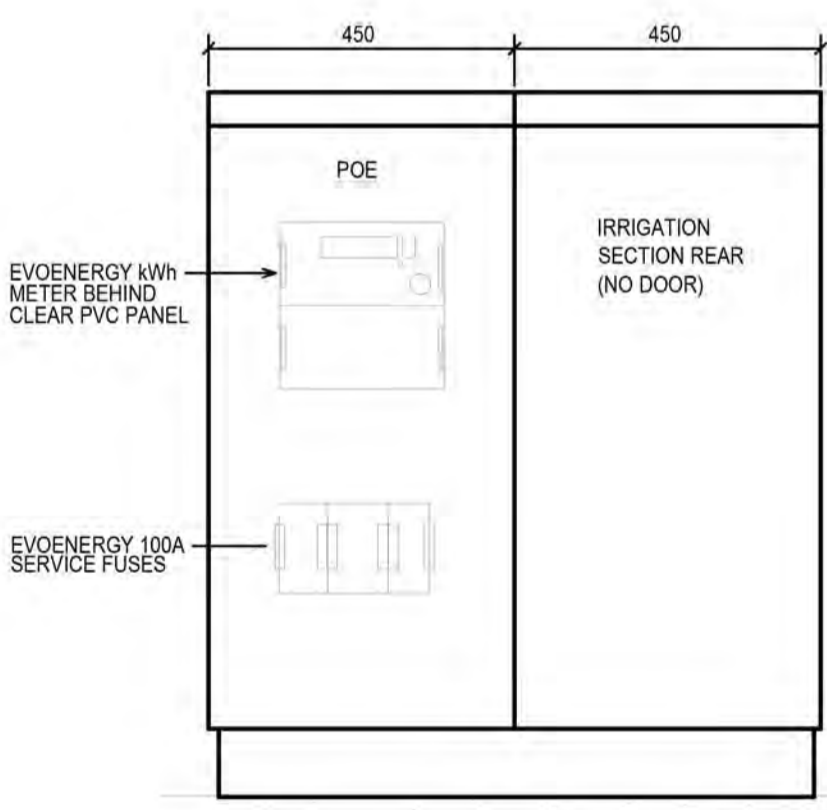
DETAIL 1: FRONT ELEVATION

NOTE:
PROVIDE CONCRETE PLINTH WITH 300mm MOWING STRIP



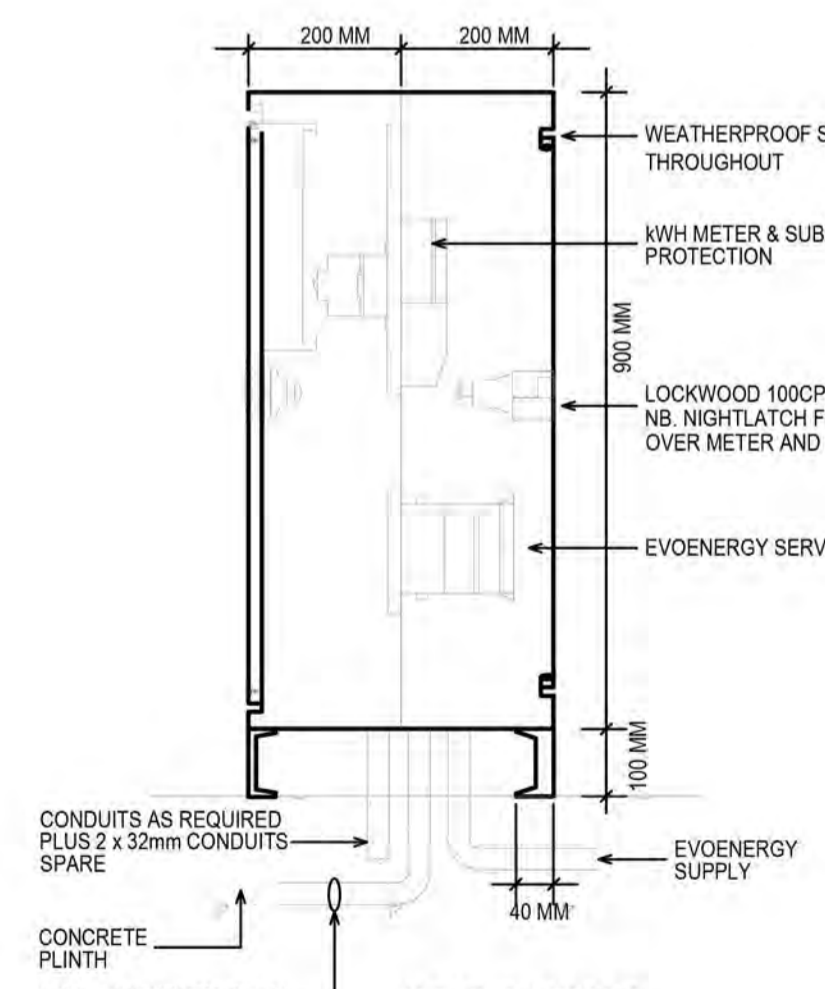
DETAIL 2: FRONT ELEVATION

(DOOR REMOVED)

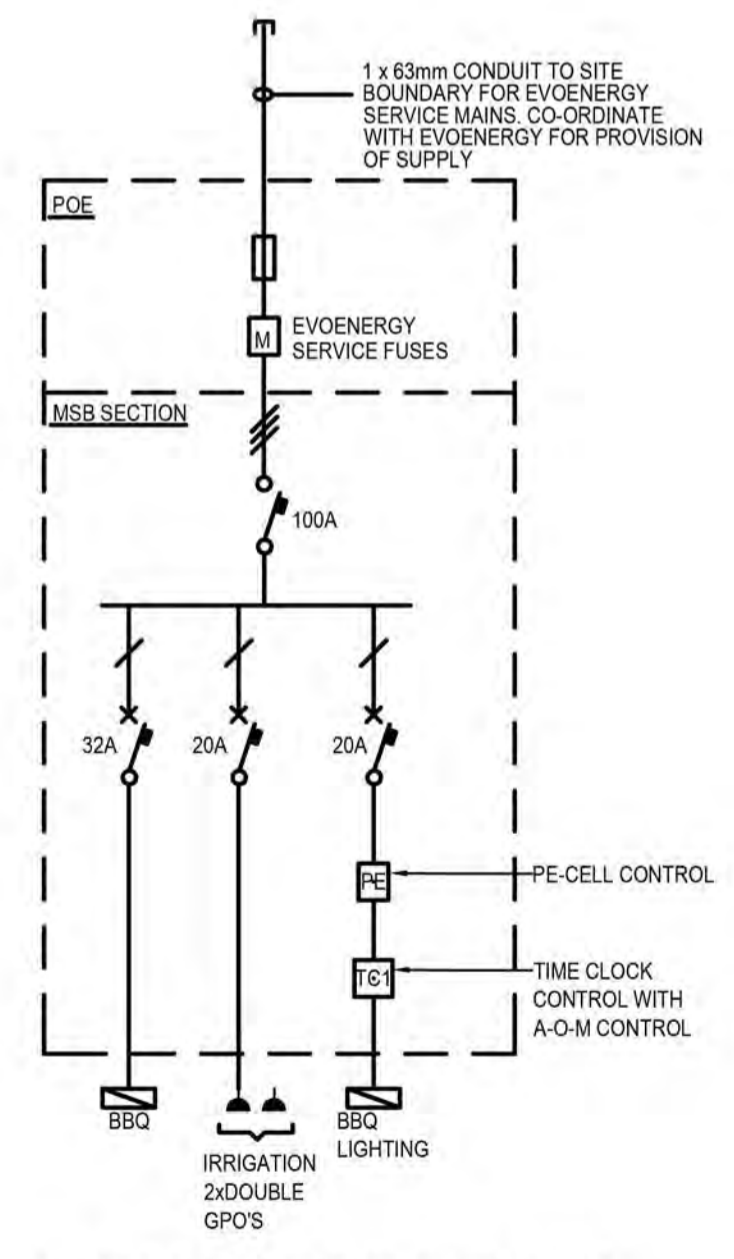


DETAIL 3: REAR ELEVATION

(DOOR REMOVED)



DETAIL 4: SECTION



DETAIL 5: POE/MSB SINGLE LINE DIAGRAM

NOTE:
-TIME CLOCK SCHNEIDER COT15723. PROVIDE A-O-M
-ALL CIRCUITS RED PROTECTED

SITE POE/MAIN SWITCHBOARD

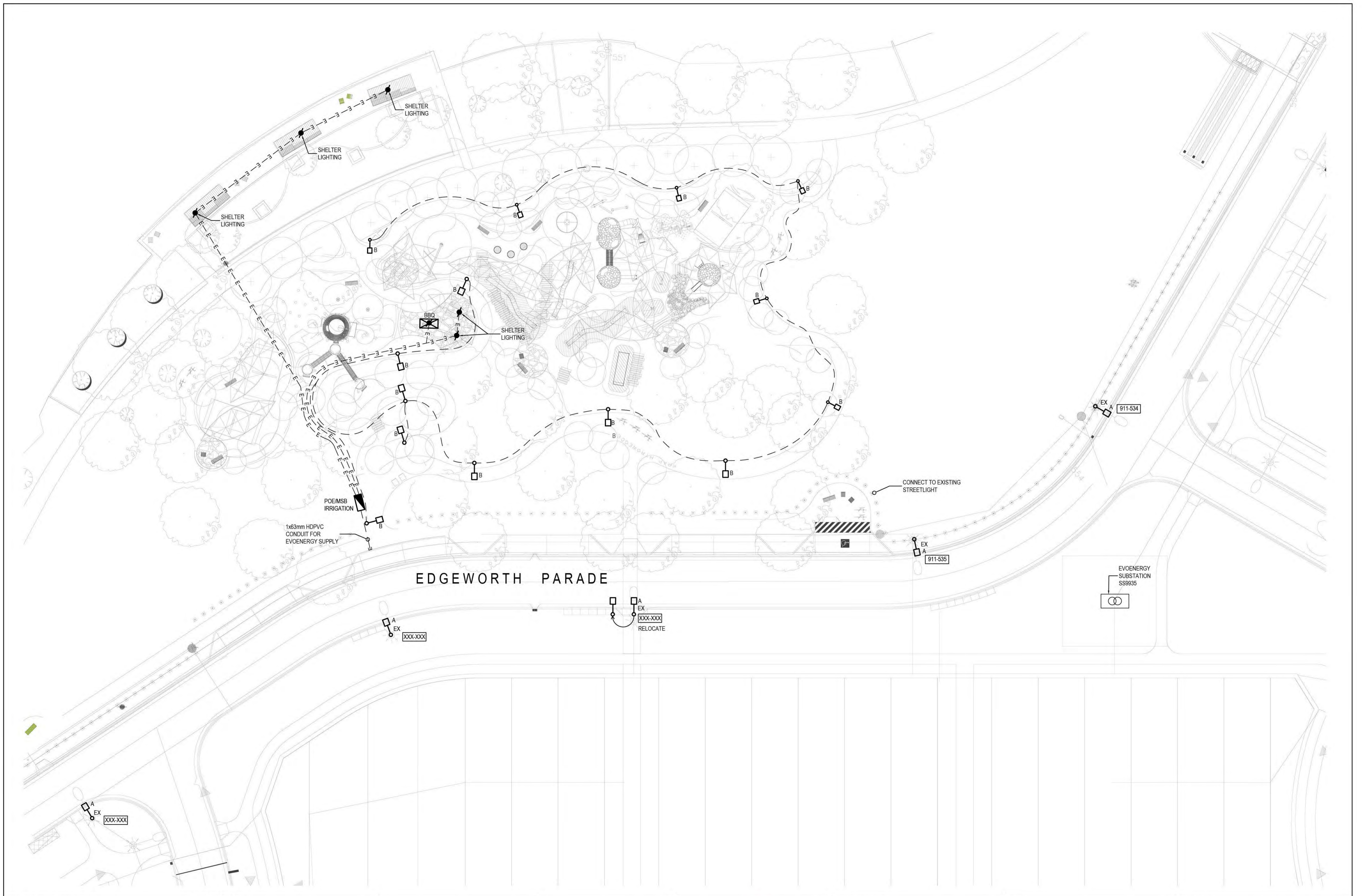
REV	DATE	DESCRIPTION	BY	CHK	APP
1	04/06/20	FSP	JBR	ACE	GA
2	13/07/20	FSP	JBR	ACE	GA

Unit 12/285 Canberra Avenue Fyshwick ACT
PO Box 45/75 Kingston ACT 2604
www.redboxdesigngroup.com.au
Ph + 61 2 6280 4448
Fax + 61 2 6280 5353

ELECTRICAL CONSULTANT:
AHERN CONSULTING ENGINEERS PTY LTD
10 SEVERNE ST
QUEANBEYAN NSW 2620
P 0406 779 235
F/P 02 6284 2215
E gordon@ahernce.com.au

PROJECT:
COOMBS EDGEWORTH
PARADE PLAYGROUND

DRAWING NAME: ELECTRICAL SERVICES - KEY PLAN, LEGEND, NOTES, AND DETAILS		
DRAWING NO: 19008-E1	REVISION: 2	SHEET SIZE: A1
SCALE: 1:5000	DRAWN: JBR	APPROVED: ACE



EDGEWORTH PARADE

REV	DATE	DESCRIPTION	BY	CHK	APP
1	04/06/20	FSP	JBR	ACE	GA
2	13/07/20	FSP	JBR	ACE	GA



 Unit 12/285 Canberra Avenue | Fyshwick ACT
 PO Box 4575 Kingston ACT 2604
 www.redboxdesigngroup.com.au
 Ph + 61 2 6280 4046
 Fax + 61 2 6280 5353

ELECTRICAL CONSULTANT:
AHERN CONSULTING ENGINEERS PTY LTD
 10 SEVERNE ST
 QUEANBEYAN NSW 2620
 P 0406 779 235
 F/P 02 6284 2215
 E gordon@ahernce.com.au

PROJECT:
 COOMBS EDGEWORTH
 PARADE PLAYGROUND

DRAWING NAME:		
ELECTRICAL SERVICES - SITE PLAN		
DRAWING NO:	REVISION:	SHEET SIZE:
19008-E2	2	A1
SCALE:	DRAWN:	APPROVED:
1:250	JBR	ACE

02/06/2021

Redbox Design Group
Unit 12, 285 Canberra Avenue
Fyshwick ACT 2609

Attention: Karin Kemp

RE: **EDGEWATER PARADE PLAYGROUND
LIGHTING COMPLIANCE CERTIFICATE**

We herein certify that the path lighting design for the Edgewater Parade Playground project as documented on Ahern Consulting Engineers drawing numbers 19008-E1 Issue 7 and E2 Issue 6, has been designed in accordance with the relevant parts of the following standards;

- AS/NZS 1158.3.1 – Lighting for Roads and Public Spaces – Pedestrian Area (Category P) Lighting – Performance and Design Requirements, (Applicable category PP4),
- AS/NZS 1158.2 – Lighting for Roads and Public Spaces – Computer Procedures for the Calculation of Light Technical Parameters for Category V and Category P Lighting,
- AS 4282 Control of the Obtrusive Effects of Outdoor Lighting,
- ACT Planning and Land Authority – Crime Prevention Through Environmental Design General Code.

Should you require further information please contact the undersigned.

Yours Faithfully



Gordon Ahern

B.E. (Elec)
Principal Electrical Engineer

AHERN CONSULTING ENGINEERS

From: "basubmission_electricity@Evoenergy.com.au"
<basubmission_electricity@Evoenergy.com.au>
Sent: 17/01/2021 8:44 PM
To: "AC, EPD Customer Services" <ACEPDCustomerServices@act.gov.au>
Subject: Evoenergy Application Decision. Application - 188524. Coombs - 4/1 (Email 1 of 2)
Attachments: Conditional Approval Electricity188524.pdf, PLAN-202037947-NOTES-01.pdf, PLAN-202037947-SURFACE FINISHES-01.pdf, PLAN-202037947-TTMP-01.pdf

CAUTION: This email originated from outside of the ACT Government. Do not click links or open attachments unless you recognise the sender and know the content is safe.

Evoenergy

Approval ID : 188524, Coombs 4 /1

Please note that your application has been assessed for compliance with Evoenergy's Electricity Network and conditionally complies with our Electricity Networks requirements.

Please find attached, your stamped plans together with a conditional statement of compliance.

Separate compliance statements may be required from other entities.

Regards

[Redacted Signature]

Evoenergy

Telephone [Redacted]

Facsimile 02 6293 5762

Email devapp@evoenergy.com.au

GPO Box 366 Canberra ACT 2601

www.evoenergy.com.au

Please consider our environment before printing this email.

PLEASE NOTE This email and any attachments may be confidential. If received in error, please delete all copies and advise the sender. The reproduction or dissemination of this email or its attachments is prohibited without the consent of the sender.

WARNING RE VIRUSES: Our computer systems sweep outgoing email to guard against viruses, but no warranty is given that this email or its attachments are virus free. Before opening or using attachments, please check for viruses. Our liability is limited to the re-supply of any affected attachments.

Any views expressed in this message are those of the individual sender, except where the sender expressly, and with authority, states them to be the views of the organisation.



Electricity Networks

STATEMENT OF

CONDITIONAL COMPLIANCE

Application No: 188524 **Suburb:** Coombs **Block/Section** 4 / 1

Appcn Type: Public works/Services/New Construction Inclusions :
Alteration/Addition, Car Park/driveway

Attached Plans

PLAN-202037947-GROUPED PLANS-01.pdf
PLAN-202037947-NOTES-01.pdf
PLAN-202037947-SURFACE FINISHES-01.pdf
PLAN-202037947-TTMP-01.pdf
PLAN-202037947-TTMP-02.pdf

This application is approved subject to compliance with the following conditions:

Conditions

Development is to comply with minimum separation requirements to underground assets. Ref Evoenergy Drawing 3832-018

Proponent is required to submit an "Application for Electricity Network Connection or Alteration form" to network.connectionapplication@evoenergy.com.au (available on Evoenergy website) prior to commencement of any development activity to negotiate the connection of new and/or relocation of existing electricity assets.

There are ACT Government Streetlight assets located over or in the vicinity of your proposed application that have not been assessed for compliance or safety. Please contact TCCS on 6207 6222 or tccs.streetlighting@act.gov.au for further information/advice/approval.

Proponents respond to meet the depth clearance of the underground electrical cables while modifying the kerb along Edgeworth Parade. Refer Evoenergy drawing 393-007 and 390-002. Please apply for network connection and alternation if needs.

Please Note

- WARNING Evoenergy underground assets may be in or adjacent to this block. It is your responsibility to ascertain the location of such assets.
- Development and Building Applications will need to include any proposed Evoenergy works
- If Evoenergy approval conditions are not met, a breach of the law may result.
- Separate applications are required for water & sewerage, and communication network services.
- Construction of unapproved works may result in action being taken to require the property owner to remove non-compliant structures and/or the property owner to fund rectification works on Evoenergy 's electricity network.
- Any attached reticulation or servicing plan is preliminary only. Contact Evoenergy for final plans prior to the commencement of any construction activity.
- A failure of this application to show accurately located electricity assets may result in damage and costs for which the proponent will be liable. Damage to network assets must be reported to Evoenergy.

Comments:

Signed



Date

For further information please phone Evoenergy Electricity Networks: 6203 0770

Evoenergy Gas Networks: 6203 0640

- SETOUT OF ALL NEW WORKS SHALL BE CONFIRMED ON SITE WITH THE SUPERINTENDENT PRIOR TO THE COMMENCEMENT OF WORKS.
- ALL CONSTRUCTION WORK SHALL BE CARRIED OUT IN ACCORDANCE WITH THE ACT STANDARD SPECIFICATION FOR URBAN INFRASTRUCTURE WORKS, ICON WATER WATER SUPPLY AND SEWERAGE STANDARDS AND APPLICABLE AUSTRALIAN STANDARDS.
- ALL CONSTRUCTION WORK SHALL BE CO-ORDINATED WITH ANY OTHER ADJACENT CONTRACTS AND WORKS.
- THE LOCATION OF SOME EXISTING SERVICES ARE SHOWN IN THEIR APPROXIMATE LOCATION ONLY. PRIOR TO ANY DEMOLITION, EXCAVATION, OR CONSTRUCTION ON SITE, THE CONTRACTOR SHALL CONTACT THE RELEVANT AUTHORITIES AND VERIFY THE LOCATION OF ALL UNDERGROUND SERVICES ON THE SITE AND OBTAIN NECESSARY CLEARANCES.
- PRIOR TO THE COMMENCEMENT OF WORKS, CLEARANCES SHALL BE OBTAINED FROM THE RELEVANT SERVICE AUTHORITY AND SUBMITTED TO THE SUPERINTENDENT.
- THE CONTRACTOR IS TO LOCATE AND ADVISE LEVELS OF ALL EXISTING SERVICE CONNECTION POINTS PRIOR TO COMMENCING WORK. CONFIRM DESIGN LEVELS WHERE GIVEN.
- SURFACES WHICH LIE OUTSIDE THE GENERAL LIMITS OF LANDSCAPING AND RESTORATION WHICH ARE DISTURBED DURING THE CONSTRUCTION OF THE WORKS SHALL BE RESTORED BY THE CONTRACTOR, AT THE CONTRACTOR'S EXPENSE, TO AT LEAST THEIR PRE-CONSTRUCTION CONDITION. THESE SURFACES INCLUDE, BUT ARE NOT NECESSARILY LIMITED TO, PAVEMENTS, PAVING, GRASSING, LANDSCAPING ETC.
- FOR BACKFILLING OF ALL HYDRAULIC SERVICES, TELSTRA, GAS AND CONDUITS REFER TO MITS 03H-TRENCHLESS CONDUIT INSTALLATION. BACKFILL UNDER ROADS IN LAYERS NOT EXCEEDING 150mm AND BEHIND KERBS IN LAYERS NOT EXCEEDING 400mm. REFER TO ICON WATER STANDARD DRAWING NO'S SD2101-C FOR BACKFILLING FOR WATER MAINS AND SEWER PIPES. COMPACTED TO 90% MMDD BEHIND KERBS.
- ALL STORMWATER PIPELINES UP TO AND INCLUDING Ø675 LOCATED UNDER ROADWAYS SHALL HAVE RUBBER RING JOINTS.
- FOR TRENCHING, BEDDING AND BACKFILLING REQUIREMENTS FOR CONDUITS REFER TO RELEVANT DETAILS PROVIDED BY SERVICE AUTHORITIES.
- SAWCUT EXISTING ASPHALT, CONCRETE AND PAVING AT ALL JOINS WITH NEW WORK.
- ALL KERBS SHALL BE CONSTRUCTED ON DGS20 OF MINIMUM COMPACTED THICKNESS OF 100mm UNLESS OTHERWISE NOTED.

EXISTING INFRASTRUCTURE NOTES

- EXISTING INFRASTRUCTURE WORKS, ROAD PAVEMENTS, CONCRETE KERBS, SUMPS ETC. ARE TO BE PROTECTED FROM DAMAGE DURING THE CONSTRUCTION OF THE WORKS. ANY AREAS DAMAGED SHALL BE RESTORED BY THE CONTRACTOR, AT THE CONTRACTOR'S EXPENSE, TO AT LEAST THEIR PRE-CONSTRUCTION CONDITION. THESE SURFACES INCLUDE, BUT ARE NOT NECESSARILY LIMITED TO, PAVEMENTS, PAVING, KERBING, ETC.

CONCRETE NOTES

- ALL WORKMANSHIP AND MATERIALS SHALL BE IN ACCORDANCE WITH AS3600.
- CEMENT TYPE 'GP' COMPLYING WITH AS3972.
- ADMIXTURES : NONE TO BE USED WITHOUT THE APPROVAL OF THE SUPERINTENDENT.
- NO 'BRECCIA' TYPE AGGREGATE TO BE USED.
- COMPACTION : VIBRATION ONLY.
- SIZES OF ELEMENTS DO NOT INCLUDE THICKNESS OF APPLIED FINISHES.
- JOINTS LOCATIONS AS SHOWN OR APPROVAL BY THE SUPERINTENDENT.
- COVER TO REINFORCEMENT FOR CORROSION PROTECTION SHALL BE AS PER EXPOSURE CLASSIFICATION B1 TO AS3600.
- CURING OF CONCRETE : COMPLY WITH AS3799.
- REINFORCEMENT : CONFORM TO AS/NZS4671 CURRENT ADDITION WITH AMENDMENTS. REINFORCEMENT SYMBOLS : N DENOTES 500Y GRADE DEFORMED BAR S DENOTES 250S GRADE DEFORMED BAR R DENOTES 250R GRADE ROUND BAR NUMBER FOLLOWING THESE SYMBOLS IS THE BAR DIAMETER IN mm.
- REINFORCEMENT IS REPRESENTED DIAGRAMMATICALLY: IT IS NOT NECESSARILY SHOWN IN THE TRUE PROJECTION.
- SPLICES IN REINFORCEMENT : MAKE ONLY IN THE POSITION SHOWN OBTAIN WRITTEN APPROVAL OF THE SUPERINTENDENT FOR ANY OTHER SPLICE.
- WELDING OF REINFORCEMENT : PERMITTED ONLY AFTER APPROVAL BY THE SUPERINTENDENT.
- SITE BENDING OF N BARS : COLD BENDING WITH POWER OR MECHANICAL BENDING TOOLS ONLY.
- CONCRETE FINISHES: REFER SPECIFICATION FOR DETAILS.
- CONCRETE TOLERANCES: REFER SPECIFICATION.
- JOINT SEALANT SHALL BE APPLIED FOLLOWING THE 28 DAY CONCRETE CURING PERIOD TO CREATE A FLUSH SURFACE. SEALANT COLOUR SHALL BE : GREY.

PAVEMENT NOTES

- FOR THE PAVEMENT DESIGN, SUBGRADE CBR VALUES HAVE BEEN DERIVED FROM LABORATORY SOAKED CBR TESTS ON REPRESENTATIVE SOIL SAMPLES.
- SUBGRADES ARE INITIALLY TO BE PREPARED TO BOTTOM OF SUB-BASE LEVEL AND CBR TESTS TAKEN AT THIS LEVEL. FOLLOWING RECEIPT OF CBR RESULTS THE SUPERINTENDENT WILL IDENTIFY WHICH SUBGRADE AREAS REQUIRE THE SELECT FILL LAYER SHOWN IN THE PAVEMENT DESIGNS.
- SUBGRADES PREPARED TO BASE OF SELECT FILL LAYER AS SHOWN ON THE PAVEMENT DETAILS SHALL BE INSPECTED BY THE CONTRACTOR'S GEOTECHNICAL ENGINEER TO DETERMINE THE AREAS THAT REQUIRE THE DRAINAGE BLANKET SHOWN IN THE PAVEMENT DESIGNS.
- FOR ALL PAVEMENT TYPES COMPACT SUBGRADE, SELECT FILL, SUBBASE AND BASE IN ACCORDANCE WITH THE SPECIFICATION.
- SUBGRADE PREPARATION :
 - REMOVE TOPSOIL, LARGE ROOTS AND UPPER LEACHED SOILS FROM ALL AREAS TO BE PAVED.
 - ANY HOLES CREATED BY REMOVAL OF ROOTS SHALL BE BACKFILLED.
 - PROOF ROLL ALL SUBGRADES IN ACCORDANCE WITH THE SPECIFICATION.

EROSION & SEDIMENT CONTROL NOTES

- IT IS THE RESPONSIBILITY OF THE CONTRACTOR TO DESIGN, INSTALL AND MAINTAIN EROSION AND SEDIMENT CONTROL MEASURES IN ACCORDANCE WITH ALL EPA ACTS AND ACT GOVERNMENT REQUIREMENTS. REFER TO EROSION AND SEDIMENT CONTROL CONCEPT NOTES AND CONCEPT PLAN.
- ALL EROSION AND SEDIMENT MEASURES SHALL BE REMOVED AT THE COMPLETION OF THE PROJECT.

SURVEY DATUM

- HEIGHT DATUM - AHD, COORDINATE DATUM - STROMLO.

SITE COMPOUND NOTES

- THE CONTRACTOR SHALL CONSTRUCT THE FACILITY TO A SIZE THAT WILL PERFORM IN A MANNER WHICH SATISFIES THE REQUIREMENTS OF THE APPROVED ENVIRONMENTAL MANAGEMENT PLAN.
- STABILISED CONSTRUCTION ENTRANCE/EXIT MATERIAL - CRUSHED ROCK 50mm TO 75mm NOMINAL SIZE PLACED ON HIGH STRENGTH GEOTEXTILE FABRIC.
- THE ENTRANCE SHALL BE MAINTAINED IN A CONDITION WHICH WILL PREVENT TRACKING OR FLOWING OF SEDIMENT ONTO STREETS. THIS MAY REQUIRE PERIODIC TOP DRESSING OF THE ENTRANCE WITH ADDITIONAL STONE AS CONDITIONS DEMAND AND REPAIR AND/OR CLEARANCE OF ANY MEASURES USED TO TRAP SEDIMENT. ALL SEDIMENT SPILLED, DROPPED, WASHED OR TRACKED ONTO ROADS MUST BE REMOVED IMMEDIATELY BY THE CONTRACTOR.

evoenergy
 OBJECT POINT - MAIN ROAD ACCESS POINT
 TRAFFIC AND PEDESTRIAN MANAGEMENT
CONDITIONALLY COMPLIES
 This document has been assessed and is conditionally compliant with Evoenergy's infrastructure and access to it requirements subject to the conditions as listed on the Statement of Conditional Compliance.
 The information contained in this plan has been provided with Evoenergy's electricity network protection and access requirements subject to the conditions as listed on the Statement of Conditional Compliance.
 Please note: Construction of proposed overhead power lines requires the property owner to remove non-compliant structures and/or the property owner to fund rectification works to ensure a safe and reliable network.
 Signed: [Signature] 18 Jan 2021
 Contact: 02 9595 7700

TRAFFIC CONTROL DEVICES

- ALL TRAFFIC CONTROL DEVICES SHALL BE IN ACCORDANCE WITH AS1742, EXCEPT WHERE MODIFIED BY "STANDARD TRAFFIC CONTROL DEVICE DRAWINGS" - ACT DEPARTMENT OF URBAN SERVICES.
- MANUFACTURE/ERECT/INSTALL ALL TRAFFIC CONTROL DEVICES IN ACCORDANCE WITH THE SPECIFICATION AND DRAWINGS.
- LONG LIFE MATERIAL (LLM) SUCH AS THERMOPLASTICS, COLD APPLIED PLASTIC CEMENT BASED PRODUCTS CAPABLE OF HAVING QUARTZ APPLIED, SHALL BE USED FOR PAVEMENT MARKINGS AND LINES IN ACCORDANCE WITH "STANDARD TRAFFIC CONTROL DEVICE DRAWINGS" - ACT DEPARTMENT OF URBAN SERVICES.

REFERENCE DRAWINGS

- FOR STANDARD REFERENCE DRAWINGS REFER TO,
- ACT GOVERNMENT - MUNICIPAL DESIGN STANDARD DRAWINGS.
 - ICON WATER, WATER SUPPLY AND SEWERAGE DESIGN STANDARDS.

LEGEND

EXISTING

- AREA OF WORK
- eW FH WATER / METER PIT / GATE VALVE DOUBLE AIR VALVE / FIRE HYDRANT
- eS S SEWER / SEWER MANHOLE
- TS TRUNK SEWER MAIN
- eSW S STORMWATER PIPE / SW MANHOLE STORMWATER SUMP
- eE ELECTRICAL LUG (SERVICE LINE)
- ELECTRICAL POLE/STREETLIGHT/ STREETLIGHT OUTREACH
- eNBN EXISTING NBN
- DESIGN CONTOUR - MAJOR
- DESIGN CONTOUR - MINOR
- EXISTING POND

PROPOSED

- PROPOSED ROCI KERB
- PROPOSED CARPARK / KERB RAMP
- PROPOSED 2.0m WIDE CONCRETE PATH
- PROPOSED 2.5m WIDE CONCRETE PATH
- PROPOSED TREE
- 1.8m HIGH TEMPORARY CHAINMESH CONSTRUCTION FENCE
- SF SILT FENCE - REFER DETAIL

9	26/10/2020	DA SUBMISSION	HR	HR	GZ
8	20/10/2020	DA SUBMISSION	HR	HR	GZ
7	15/09/2020	TCCS RESUBMISSION	HR	HR	GZ
6	28/08/2020	REDBOX COMMENTS	HR	HR	GZ
5	22/08/2020	DOCUMENT READINESS	HR	HR	GZ
4	15/07/2020	FINAL SKETCH PLAN	GH	HR	GZ
3	11/06/2020	PRELIMINARY SKETCH PLAN	GH	JS	GZ
2	28/02/2019	FOR APPROVAL	JS	GZ	GZ
1	18/02/2019	FOR COMMENT	JS	GZ	GZ
Rev.	Date	Description	Des.	Verif.	Appd.



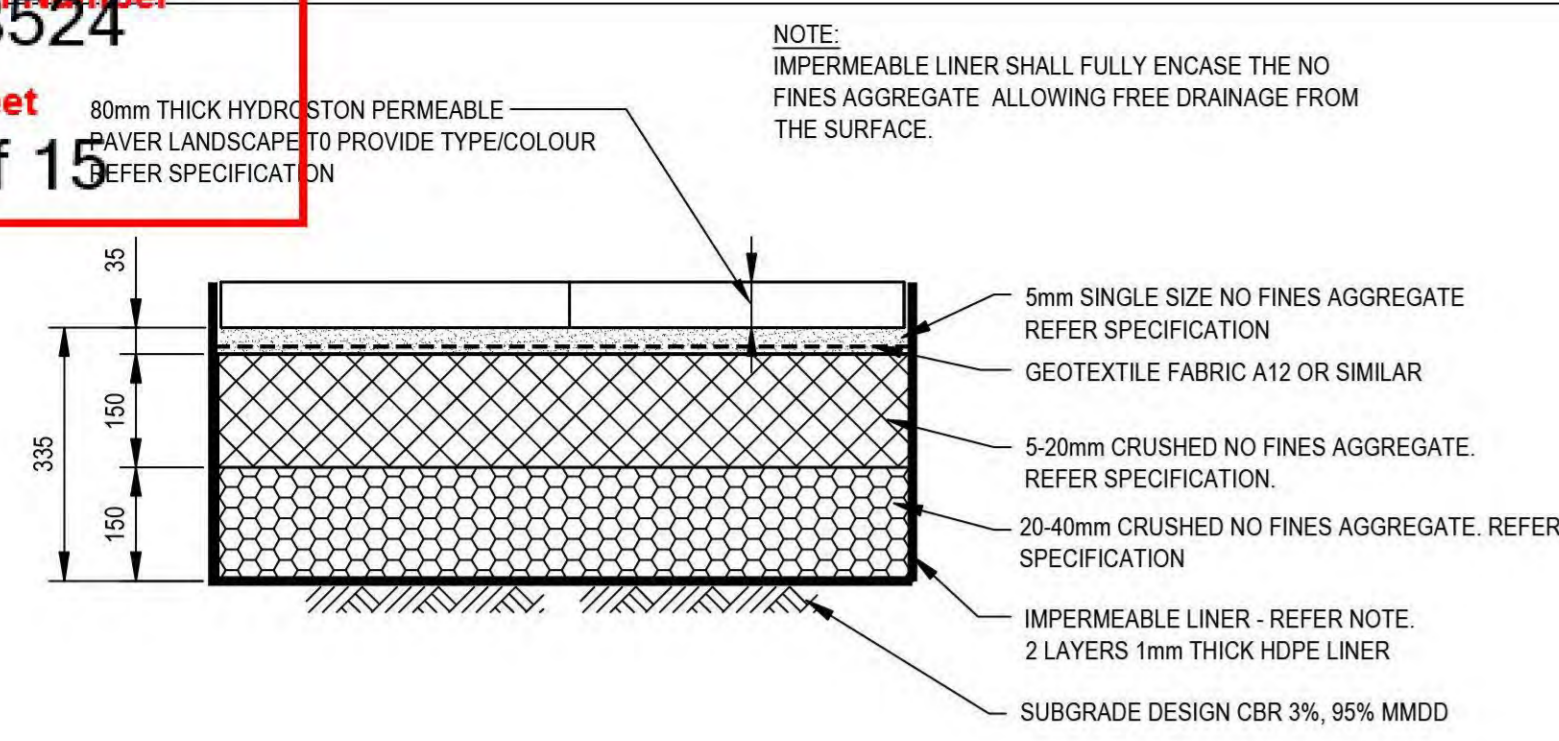
© Cardno Limited All Rights Reserved. This document is produced by Cardno Limited solely for the benefit of and use by the client in accordance with the terms of the retainer. Cardno Limited does not and shall not assume any responsibility or liability whatsoever to any third party arising out of any use or reliance by third party on the content of this document.

Cardno
 Cardno (NSW/ACT) Pty Ltd | ABN 95 001 145 035
 Level 2, 14 Wormald Street
 Symonston ACT 2609
 Tel: 02 6112 4500 Fax: 02 6112 4599
 Web: www.cardno.com.au

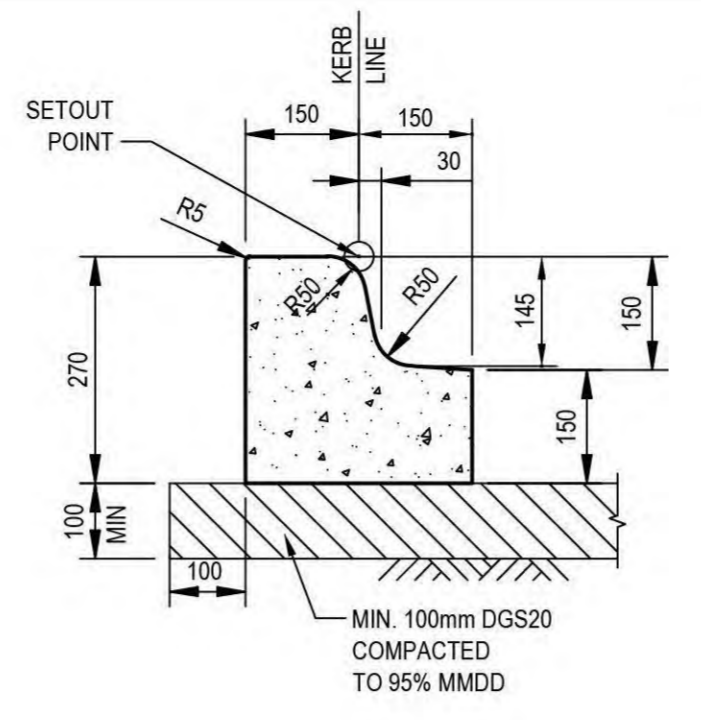
Drawn	Date	Client
MV	14/02/2019	REDBOX DESIGN GROUP
Checked	Date	Project
JS	15/02/2019	COOMBS EDGEWORTH PDE. PLAYGROUND
Designed	Date	Status
JS	15/02/2019	FOR APPROVAL
Verified	Date	NOT TO BE USED FOR CONSTRUCTION PURPOSES
GZ	15/02/2019	
Approved	Date	Title
JPS		GENERAL NOTES AND LEGEND

Datum	Date	Scale	Size
AHD	Aug-20	N/A	A1
Drawing Number	Revision		
50519045-C110-GN	9		

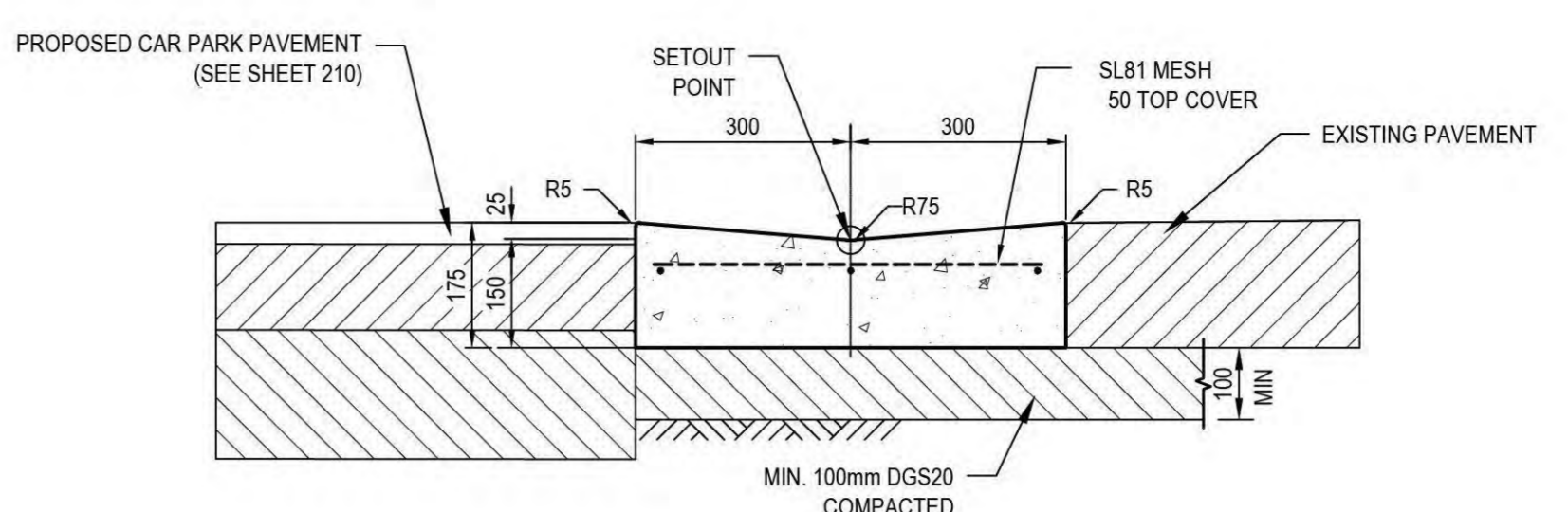
DATE PLOTTED: 26 October 2020 7:19 AM BY: MIA LORENA ANCONEVEO
 XREFS: X-BASE DD COOMBS - STAGE 4; X-CIVIL-PATH-HATCH; X-BASE DD COOMBS - STAGE 3; X-REF-LANDSCAPE; X-BASE CARPARK; X-Aerial; X-BASE CARPARK FOR DA
 CAD File: \\cardno.corp\gobal\AU\NSW\DW\Registry\Structure\Projects\50519045_COOMBS EDGEWORTH PARADE PLAYGROUND\Drawings\Build\DA\50519045-C210-SFP.dwg



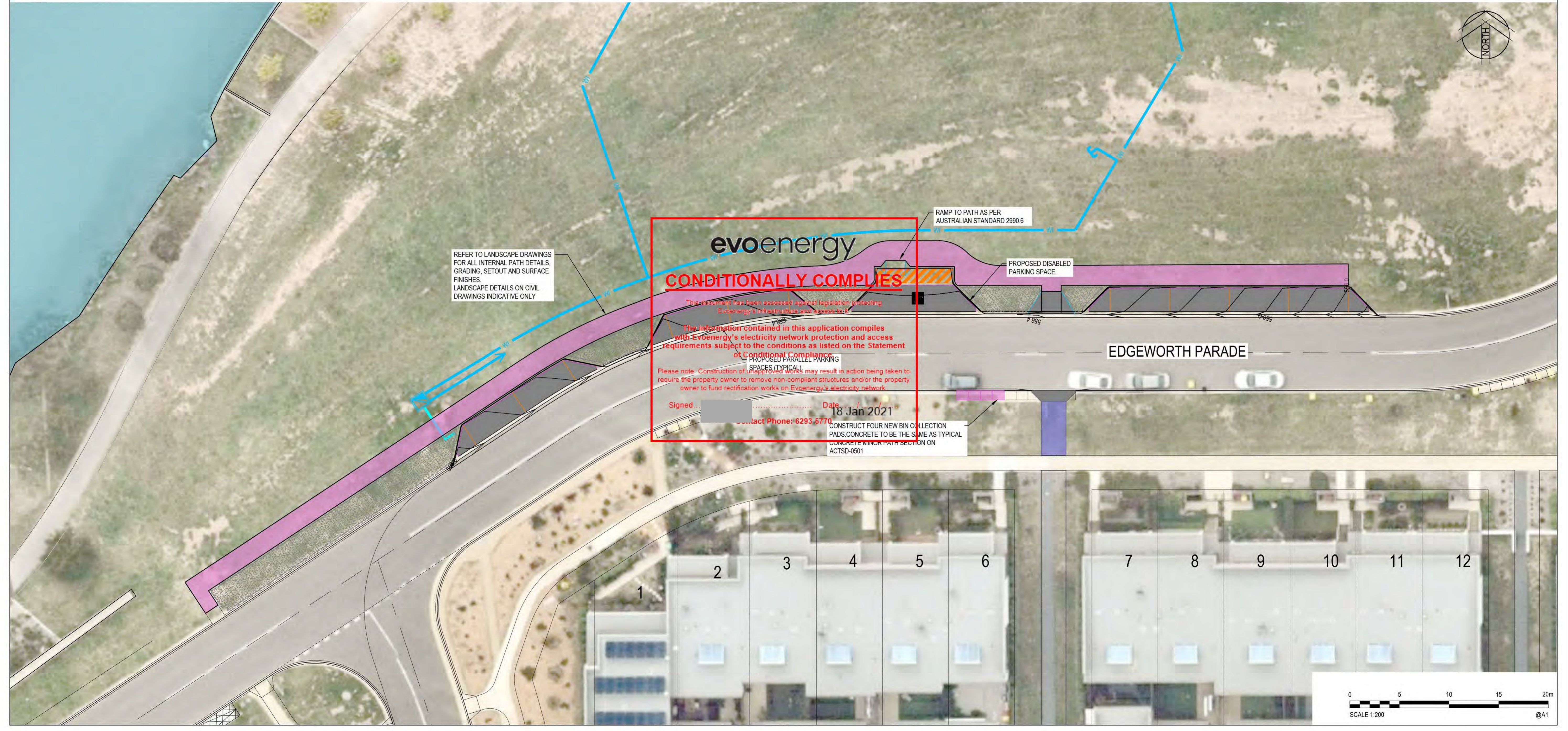
PERMEABLE PAVEMENT DETAIL (CARPARK)
 SCALE: N.T.S.



K4A KERB
 SCALE: N.T.S.



REINFORCED OPEN CONCRETE INVERT (ROCI)
 SCALE: N.T.S.



Rev.	Date	Description	Des.	Verif.	Appd.
8	26/10/2020	DA SUBMISSION	HR	HR	GZ
7	20/10/2020	DA SUBMISSION	HR	HR	GZ
6	15/09/2020	TCCS RESUBMISSION	HR	HR	GZ
5	28/08/2020	REDBOX COMMENTS	HR	HR	GZ
4	22/08/2020	DOCUMENT READINESS	HR	HR	GZ
3	15/07/2020	FINAL SKETCH PLAN	GH	HR	GZ
2	11/06/2020	PRELIMINARY SKETCH PLAN	GH	JS	GZ
1	1/03/2019	FOR APPROVAL	JS	GZ	GZ

ACT Suburban Land Agency **redbox design group**

© Cardno Limited All Rights Reserved.
 This document is produced by Cardno Limited solely for the benefit of and use by the client in accordance with the terms of the retainer. Cardno Limited does not and shall not assume any responsibility or liability whatsoever to any third party arising out of any use or reliance by third party on the content of this document.

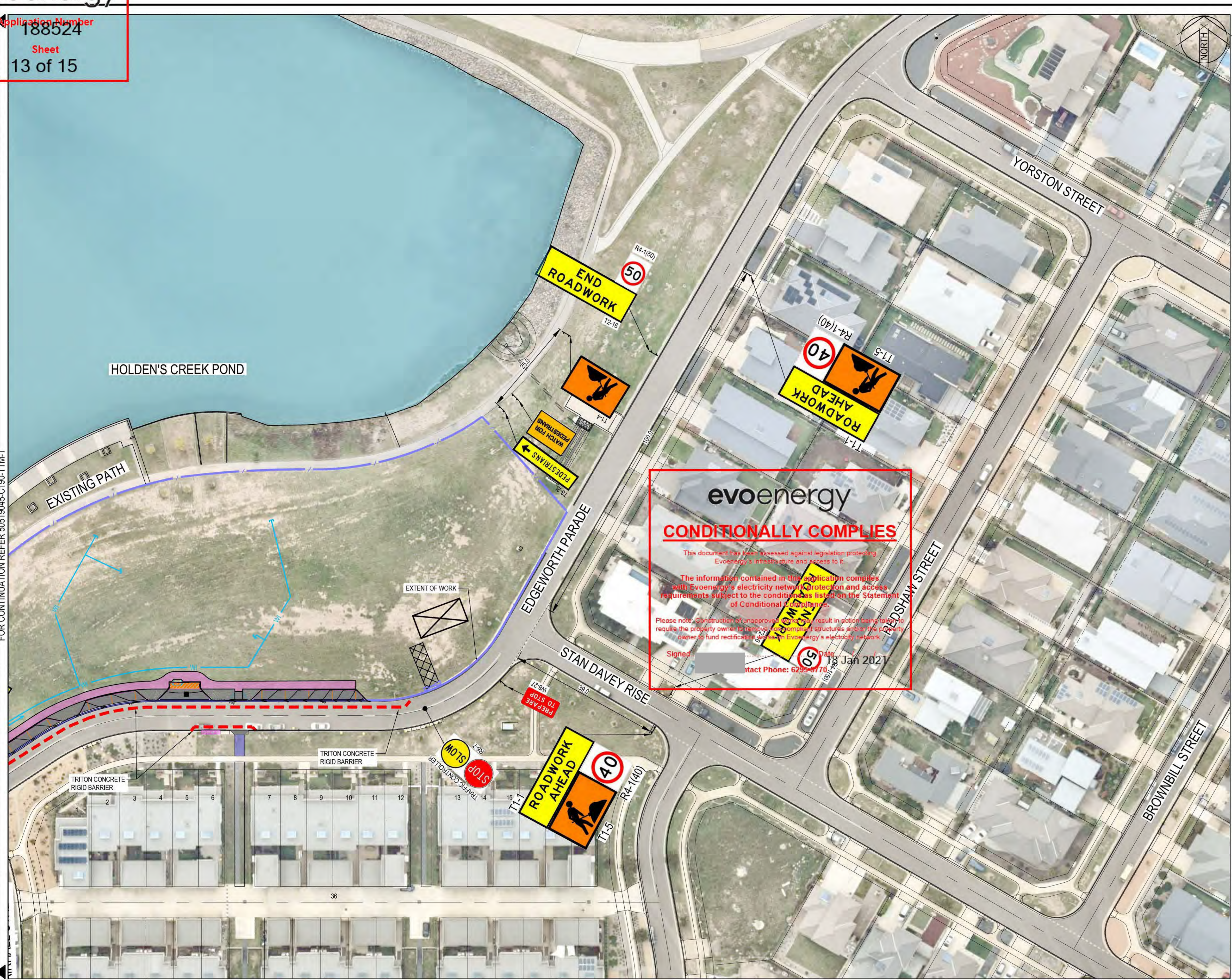
Cardno
 Cardno (NSW/ACT) Pty Ltd | ABN 95 001 145 035
 Level 2, 14 Wormald Street
 Symonston ACT 2609
 Tel: 02 6112 4500 Fax: 02 6112 4599
 Web: www.cardno.com.au

Drawn	MV	Date	14/02/2019
Checked	JS	Date	15/02/2019
Designed	JS	Date	15/02/2019
Verified	GZ	Date	15/02/2019
Approved	JPS		

Client	REDBOX DESIGN GROUP
Project	COOMBS EDGEWORTH PDE. PLAYGROUND
Title	SURFACE FINISHES PLAN

Status	FOR APPROVAL				
NOT TO BE USED FOR CONSTRUCTION PURPOSES					
Datum	AHD	Date	Aug-20	Scale	1:200
Size				A1	
Drawing Number	50519045-C210-SFP			Revision	8

DATE PLOTTED: 26 October 2020 7:11 AM BY: MIA LORENA ANCONUEVO
FOR CONTINUATION REFER TO 5019045-C191-TTM-1
XREFs: X-BASE DD COOMBS - STAGE 4; X-Path; X-Civil-Path Hatch; X-Base DD COOMBS - STAGE 3; X-Aerial; X-REF-LANDSCAPE; X-BASE CARPARK; X-BASE CARPARK FOR DA
CAD File: \\cardno.corp\ba\au\NSW\Director\Structure\Projects\5019045-COUMBS EDGEWORTH PARADE PLAYGROUND\Drawings\Build\DA\5019045-C191-TTM-1.dwg



evoenergy
CONDITIONALLY COMPLIES

This document has been assessed against legislation protecting Evoenergy's infrastructure and access to it.

The information contained in this application complies with Evoenergy's electricity network protection and access requirements subject to the conditions as listed on the Statement of Conditional Compliance.

Please note: Construction of an approved works may result in action being taken to require the property owner to remove non-compliant structures and/or the property owner to fund rectification works on Evoenergy's electricity network.

Signed: _____ Date: 18 Jan 2021
Contact Phone: 6299 8770

- NOTES:**
- THE CONTRACTOR IS RESPONSIBLE FOR THE SITE OF WORKS AND THE TRAFFIC MANAGEMENT WITHIN THE SITE AND SHALL KEEP ALL REQUIRED RECORDS AND UNDERTAKE ALL NECESSARY MAINTENANCE.
 - ALL TEMPORARY TRAFFIC MANAGEMENT (TTM) DEVICES SHALL BE IN ACCORDANCE WITH AS 1743 AND QA G10 TRAFFIC MANAGEMENT (ACT MODIFIED).
 - ALL EMPLOYEES ARE TO WEAR APPROPRIATE SAFETY EQUIPMENT AS DETAILED IN THE RELEVANT AUSTRALIAN STANDARD AND QA G10 TRAFFIC MANAGEMENT (ACT MODIFIED).
 - ALL SIGNS CONFLICTING WITH THIS TTM PLAN SHALL BE COVERED OR REMOVED DURING THE HOURS OF OPERATION.
 - ALL SIGNS ERECTED IN RELATION TO THIS TTM THAT ARE NOT REQUIRED OUTSIDE THE HOURS OF OPERATION SHALL BE COVERED.
 - ALL EMPLOYEES INVOLVED IN TTM TRAFFIC CONTROL, SETUP, MINOR MODIFICATIONS AND INSPECTIONS SHALL HAVE THE RELEVANT QUALIFICATIONS IN ACCORDANCE WITH CLAUSE 1.5.3 OF QA G10 TRAFFIC MANAGEMENT (ACT MODIFIED).
 - ALL TRAFFIC CONTROL SIGNS AND DEVICES SHALL BE ERECTED AS PER THIS TTM AND IN CLEAR LINE OF SIGHT TO ALL ROAD USERS AND PEDESTRIANS. THEY SHALL NOT BE OBTURED BY ANY VEGETATION, WORK PLANT OR PARKED VEHICLES. THEY SHALL NOT BE PLACED IN A MANNER THAT THEY WILL BECOME A HAZARD TO VEHICULAR TRAFFIC OR PEDESTRIANS.
 - ALL TRAFFIC LANES SHALL BE 3.0m MINIMUM.
 - ALL BOLLARDS SHALL BE PLACED AT 2.0m MINIMUM SPACING THE CONTRACTOR SHALL LIAISE WITH ADJACENT PROJECT CONTRACTOR AND NOT PLACE ANY CONFLICTING TTM. THE CONTRACTOR SHALL NOTIFY THE SUPERINTENDENT OF ANY CONFLICTS.
 - CERTIFIED TRAFFIC CONTROL PERSONNEL SHALL BE USED AT ALL TIMES DURING CONSTRUCTION.
 - NO BOLLARDS OR CONSTRUCTION VEHICLES ARE PERMITTED WITHIN 20m OF THE INTERSECTION OF CORONATION DRIVE / FORSTER CRESCENT INTERSECTION.
 - ALL BOLLARDS TO BE MOVED BACK BEHIND THE KERB OUTSIDE OF WORKS HOURS.
 - THE TTM ARRANGEMENT SHOWN IS CONSIDERED TO BE ADJUSTABLE AS THE SITE WORKS PROGRESS ALONG FORSTER CRESCENT.
 - THE CONTRACTOR SHALL ENSURE SAFE PEDESTRIAN PASSAGE THROUGH THE SITE VIA APPROVED PERSONNEL.

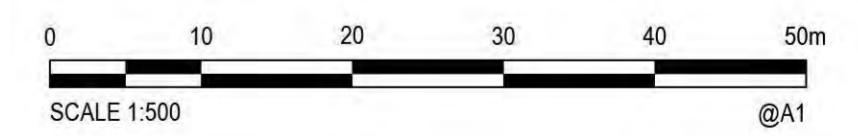
HOURS OF OPERATION:

MONDAY TO FRIDAY 7:00am to 6:00pm
SATURDAY 7:00am to 6:00pm

SIGNS TO BE ERECTED				
SIGN NUMBER	DESCRIPTION	L	R	D N
R6-7	TRAFFIC CONTROLLER	-	-	2
T1-1	ROADWORK AHEAD	-	-	3
R4-1(50)	SPEED SIGN 50 km/h	-	-	3
R4-1(40)	SPEED SIGN 40 km/hr	-	-	3
T2-16	END ROADWORK	-	-	3
T1-4	WORK ZONE	-	-	2
T8-2L	PEDESTRIAN	1	-	1
T8-2R	PEDESTRIAN	-	1	1
		NUMBER & HAND		

SIGN SCHEDULE

- LEGEND**
- 1.8m HIGH TEMPORARY SITE FENCE
 - TRITON CONCRETE RIGID BARRIER



Rev.	Date	Description	Des.	Verif.	Appd.
8	26/10/2020	DA SUBMISSION	HR	HR	GZ
7	20/10/2020	DA SUBMISSION	HR	HR	GZ
6	15/09/2020	TCCS RESUBMISSION	HR	HR	GZ
5	28/08/2020	REDBOX COMMENTS	HR	HR	GZ
4	22/08/2020	DOCUMENT READINESS	HR	HR	GZ
3	15/07/2020	FINAL SKETCH PLAN	GH	HR	GZ
2	11/06/2020	PRELIMINARY SKETCH PLAN	GH	JS	GZ
1	1/03/2019	FOR APPROVAL	JS	GZ	GZ



© Cardno Limited All Rights Reserved.
This document is produced by Cardno Limited solely for the benefit of and use by the client in accordance with the terms of the retainer. Cardno Limited does not and shall not assume any responsibility or liability whatsoever to any third party arising out of any use or reliance by third party on the content of this document.

Cardno
Cardno (NSW/ACT) Pty Ltd | ABN 95 001 145 035
Level 2, 14 Wormald Street
Sydney NSW ACT 2009
Tel: 02 6112 4500 Fax: 02 6112 4599
Web: www.cardno.com.au

Drawn	Date	Client
MV	14/02/2019	REDBOX DESIGN GROUP
Checked	Date	Project
JS	15/02/2019	COOMBS EDGEWORTH PDE. PLAYGROUND
Designed	Date	Status
JS	15/02/2019	FOR APPROVAL
Verified	Date	NOT TO BE USED FOR CONSTRUCTION PURPOSES
GZ	15/02/2019	Datum AHD Date Aug-20 Scale NTS Size A1
Approved	Date	Drawing Number
JPS	15/02/2019	501519045-C191-TTM-1
		Revision
		8

Title: TEMPORARY TRAFFIC MANAGEMENT PLAN
SHEET 2 OF 2

From: "Thompson, Rodney" <Rodney.Thompson@act.gov.au>
Sent: 10/11/2022 3:35 AM
To: "Tennent, Simon" <Simon.Tennent@act.gov.au>
Subject: FW: Coombs Playspace at Holden's Creek Pond - Revised Design Specification
Attachments: Coombs Play Space at Holdens Creek Pond - Redbox Revised Design Specification January 2020.pdf

UNOFFICIAL

From: Tennent, Simon <Simon.Tennent@act.gov.au>
Sent: Tuesday, 4 February 2020 11:22 AM
To: Karin Kemp <karin.kemp@redboxdesigngroup.com.au>
Cc: Thornhill, David <David.Thornhill@act.gov.au>; Thompson, Rodney <Rodney.Thompson@act.gov.au>; Hauzer, Angela <Angela.Hauzer@act.gov.au>
Subject: Coombs Playspace at Holden's Creek Pond - Revised Design Specification

UNOFFICIAL

Good Morning Karin

As promised, I attach a letter outlining how the Suburban Land Agency would like to proceed with the Coombs Playspace at Holden's Creek Pond.

I look forward to your reply and happy to meet up at your offices as required.

Kind regards

Simon Tennent

Development Director - Molonglo

T: 02 6205 4961

Suburban Land Agency | ACT Government

TransACT House, 470 Northbourne Avenue, Dickson

ACT 2602 | GPO Box 158 Canberra ACT 2601

www.suburbanland.act.gov.au



facebook.com/suburbanland



twitter.com/suburbanland

This email, and any attachments, may be confidential and also privileged. If you are not the intended recipient please notify the sender and delete all copies of this transmission along with any attachments immediately. You should not copy or use it for any purpose, nor disclose its contents to any other person.

<https://suburbanland.act.gov.au/whitlam/stories>



ACT
Government

Suburban Land
Agency

Whitlam

WATCH THE SERIES >>





ACT
Government

Suburban Land
Agency

Karin Kemp
Director
Redbox Design Group
Unit 12/285 Canberra Avenue
Fyshwick ACT 2604

Dear Karin

Coombs Playspace at Holdens Creek Pond

Thank you very much to you and [REDACTED] for your assistance and patience during the second phase of community consultation on your draft design for the Coombs Playspace at Holdens Creek Pond.

As you will be aware, the release of the design in 2019 prompted a significant amount of community feedback and some media and ministerial attention on the size, scale and proposed inclusions.

Accordingly, the Suburban Land Agency (SLA) undertook a second round of consultation on the draft design and 350 pieces of individual feedback were received during the consultation period, with a high representation from near neighbours. I attach a copy of the final report for information.

The SLA has carefully reviewed this feedback and undertaken further due diligence on sporting and play facilities planned in Coombs and adjacent suburbs and in the future Molonglo Town Centre. The Agency has also considered the various publicly available planning documents that existed at the time of the release of land in Coombs and what influence they may have had on the purchasing decisions of nearby residents.

Based on this review, a revision to the design is required in accordance with the attached specification. As no further community consultation will be undertaken, we request that the project restart at the preliminary sketch plan phase and progress through to final sketch plan, documentation and tender, as per the original contract and scope of works. I am mindful that this will require a variation to the current contract so I would appreciate if you could let me know of the new cost and indicative timings for the project.

I look forward to working with you and the team at Redbox on this revised design and in delivering this much anticipated Playspace for the residents of Coombs.

Yours sincerely



Simon Tennent
Development Director - Molonglo

4 February 2020

Revised Design Specification

Elements to be retained

- Discovery Play Zone - 0-5 age group
- Exploration Play Zone - 2-8 year age group
- Thrill Play Zone - 5-15 year age group
- BBQ and shaded picnic area

Elements to be removed

- Multi-Sport Court
- Toilet Facilities
- Sculptural Mist Play Zone

Design changes to specific elements

- Discovery Play Zone
 - Design to consider appropriate safety fencing, shade and additional swings
- Exploration Play Zone
 - Design to consider shade and additional swings
 - Height and location of the element to consider sight lines from neighbouring properties
- Thrill Play Zone
 - Height of the Birds Nest element to be reduced
 - Location of the Birds Nest to consider sight lines from neighbouring properties

Parking and site requirements

- Taller play elements to be clustered and benched-in at the steeper, western end of the site and in accordance with the required road, pond and existing infrastructure buffers
- The flatter, eastern end of the site to provide a kick around area and seating and access paths for passive recreation
- Seating and shading to be provided at the pond's edge
- Site landscaping and new plantings to extend through to Yorston Street
- Number of parking bays to be reduced and re-oriented parallel with Edgeworth Parade where appropriate

COOMBS NEST

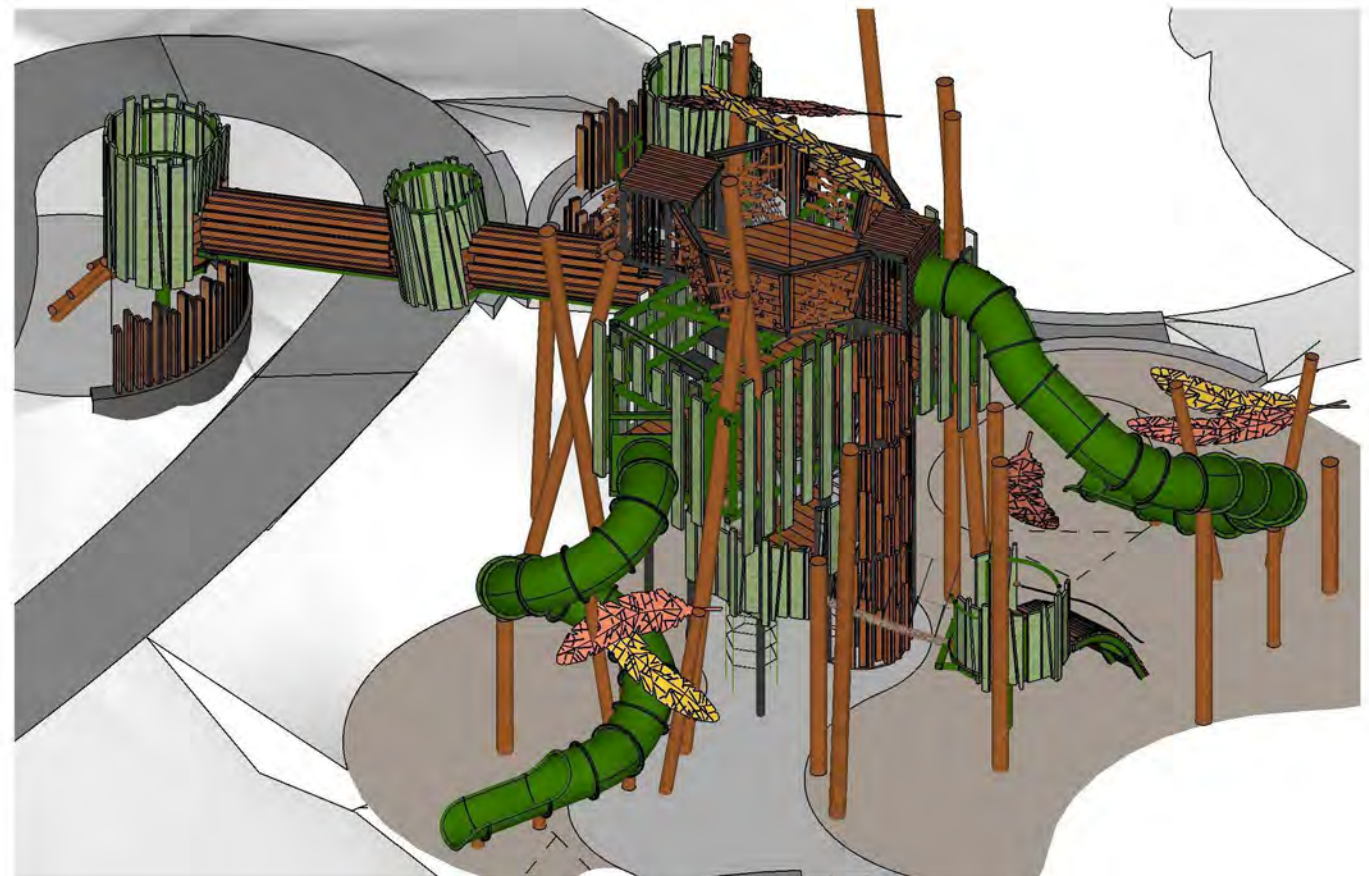
Product Information

Category:	Elevated Play
Name:	Coombs Nest
Code:	L032300

Dimensions (mm)

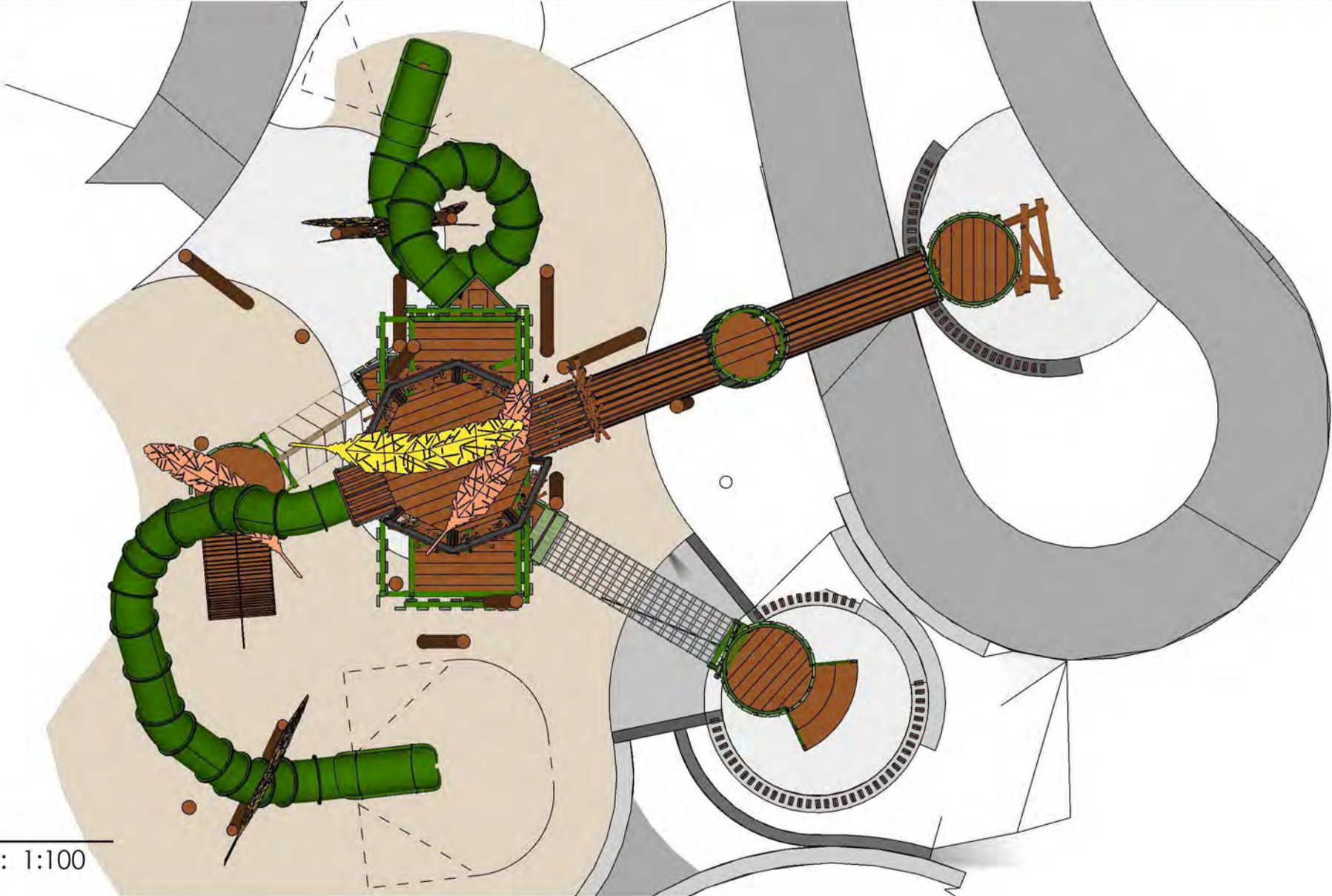
Highest platform:	6,350
Overall Height:	9,000

* Most Lypa products are hand-crafted so actual dimensions may vary.
Please advise of particular requirements or constraints to be accommodated.



1 Perspective

COOMBS NEST



2 Plan
Scale: 1:100

COOMBS NEST



3 Elevation
Scale: 1:100

COOMBS NEST



4 Elevation
Scale: 1:100

COOMBS NEST



5 Perspective

COOMBS NEST



6 Perspective

COOMBS NEST



7 Perspective

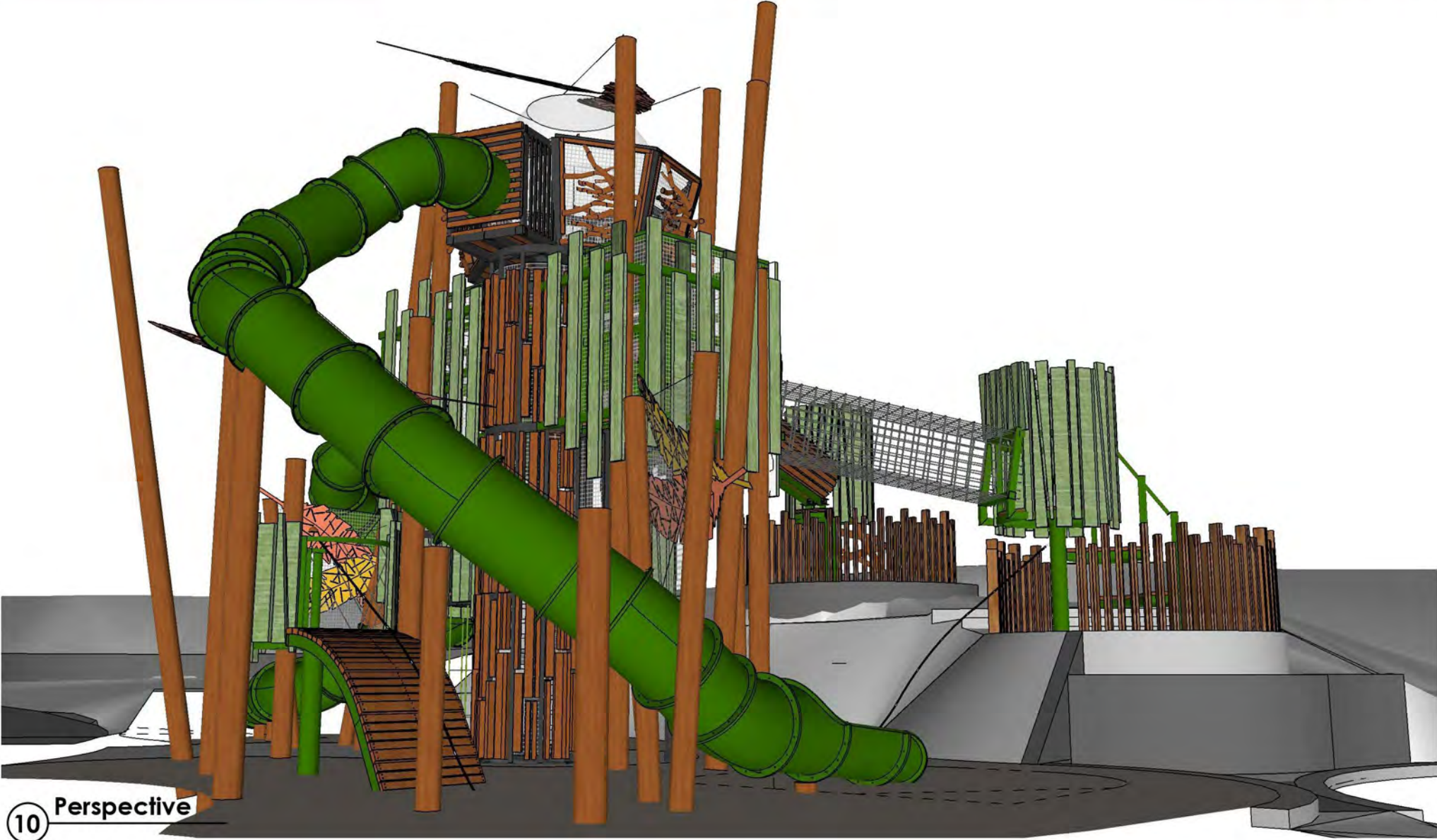
COOMBS NEST



COOMBS NEST



COOMBS NEST



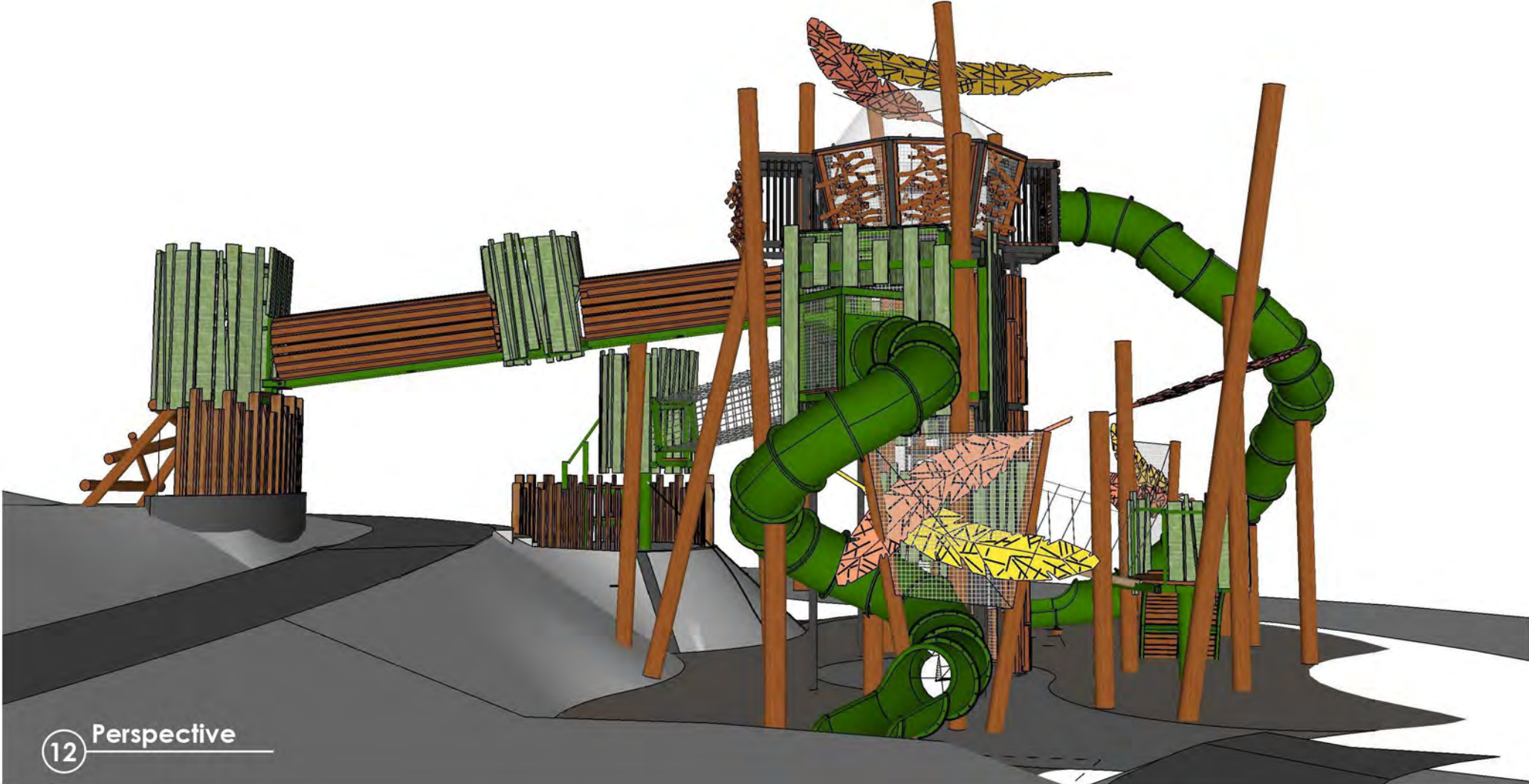
10 Perspective

COOMBS NEST

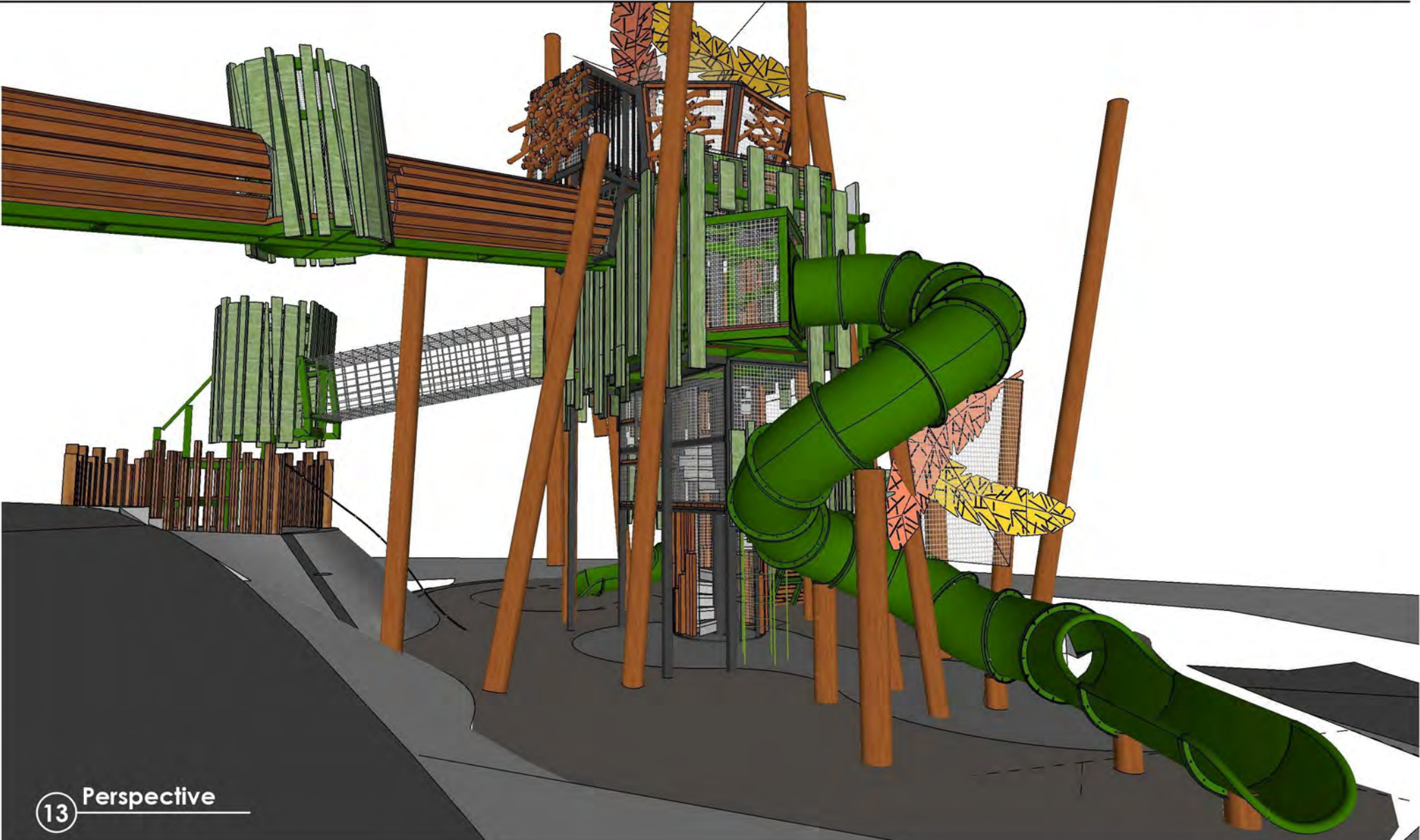
11 Perspective



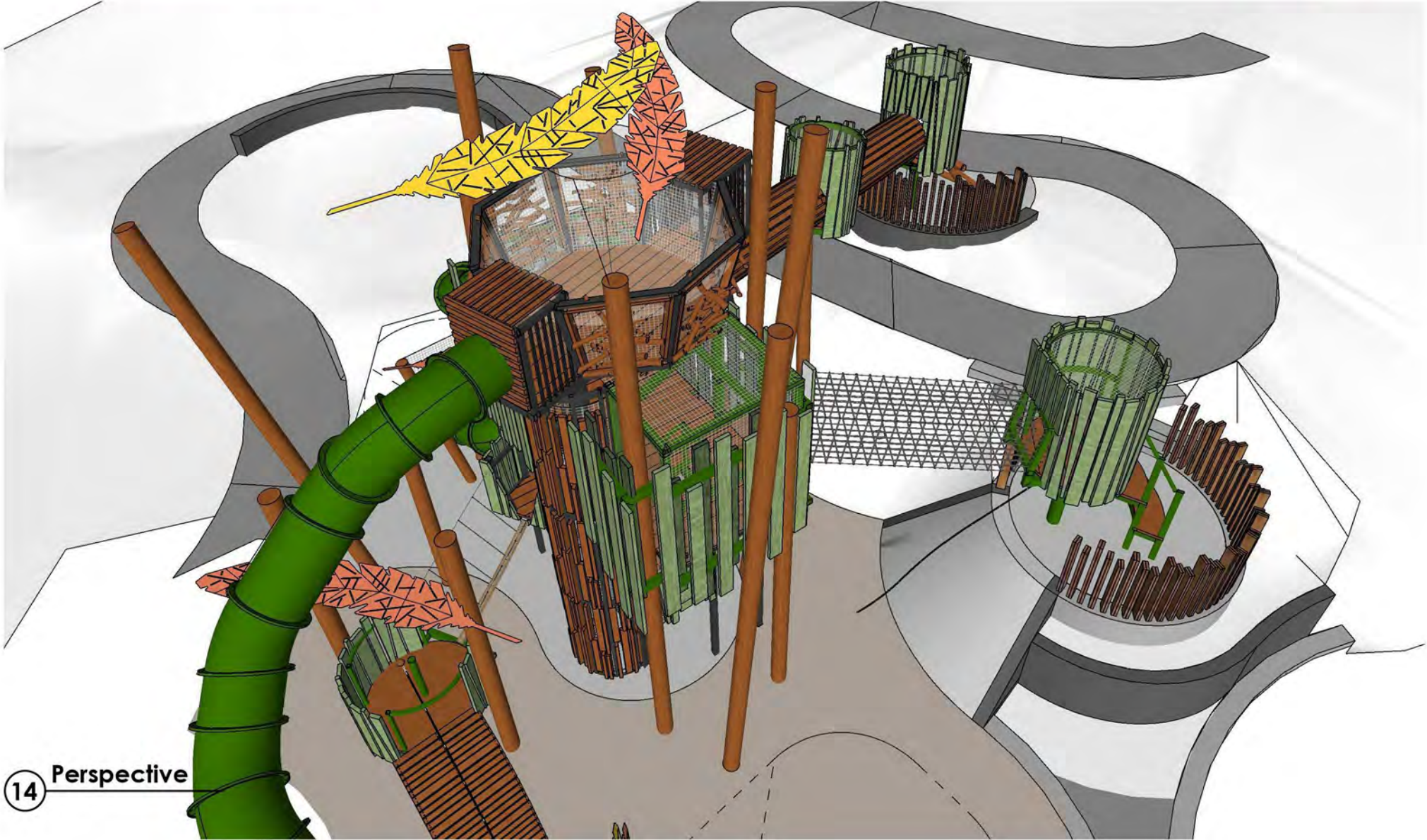
COOMBS NEST



COOMBS NEST



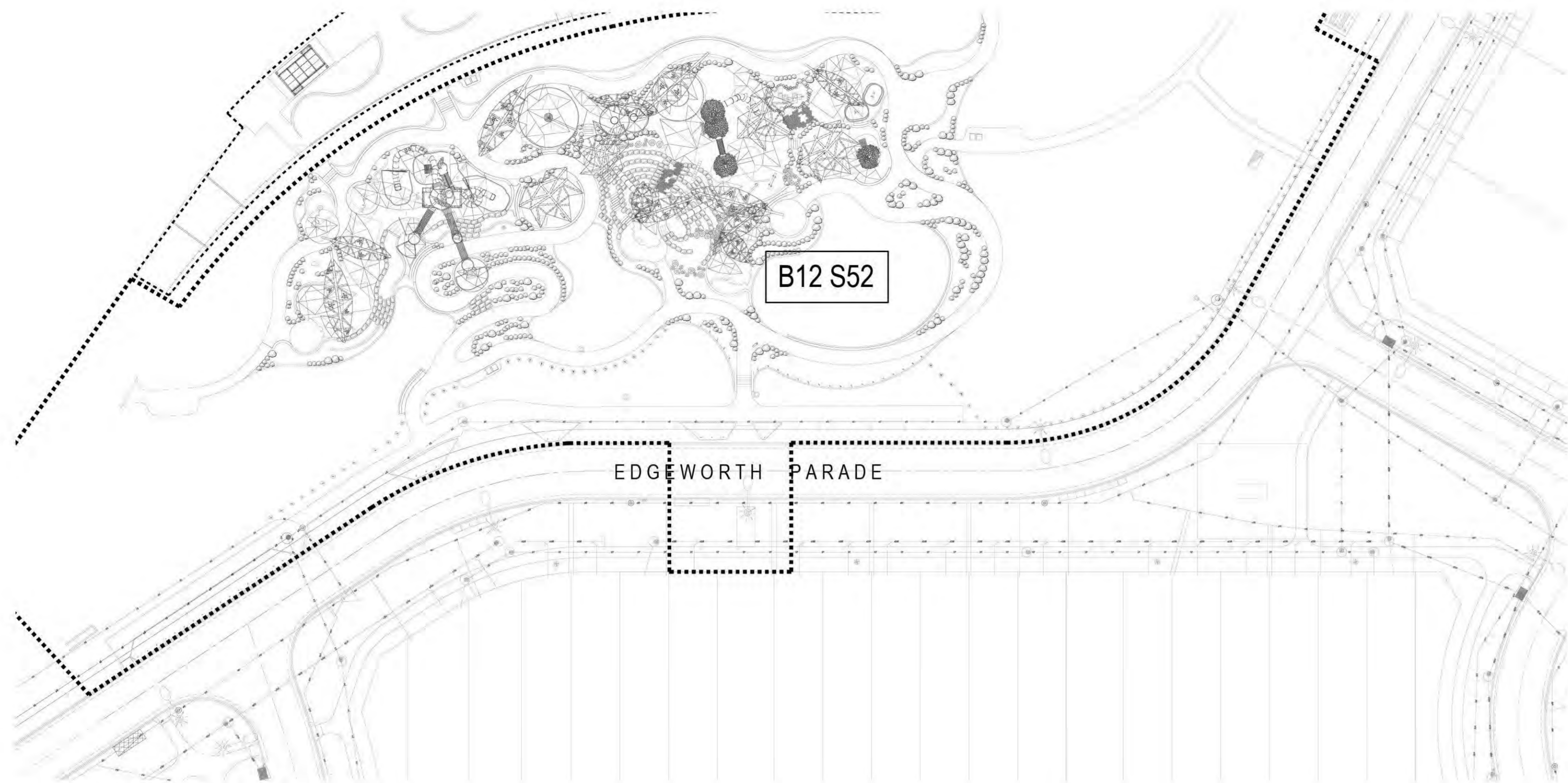
COOMBS NEST



14 Perspective

COOMBS EDGEWORTH PARADE PLAYGROUND

ELECTRICAL SERVICES



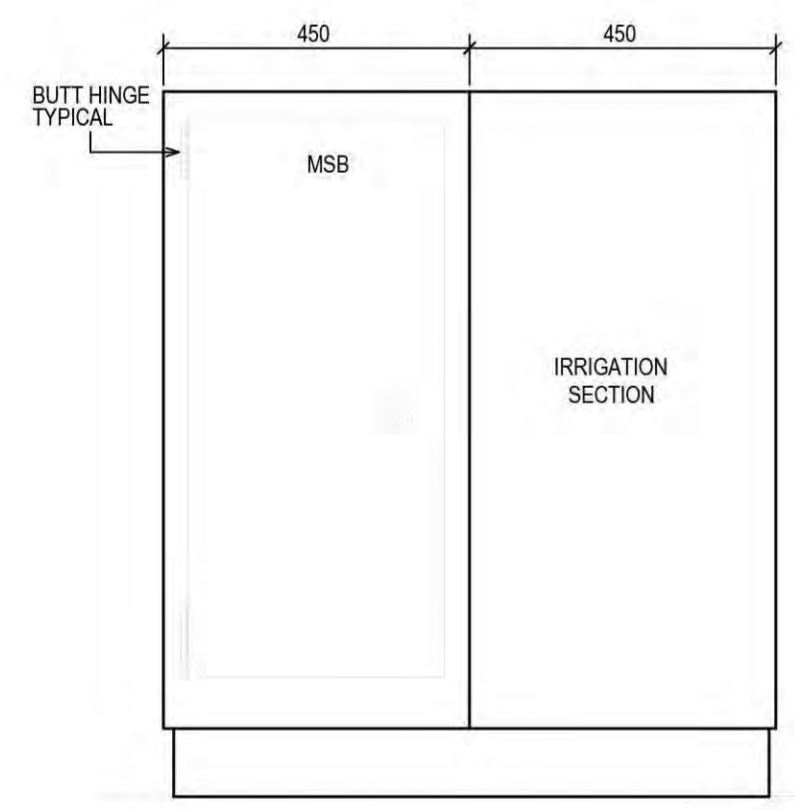
SITE PLAN

LEGEND

- EX A EXISTING POLE AND LUMINAIRE
- B 6.5M POLE WITH 0.15 OUTREACH ARM MODIFICATION AND LADDER RACKS IN ACCORDANCE WITH TCCS DRAWINGS DS12-03-20 AND DS12-02-01 WITH WE-EF VFL530 108-1880 24WP654KJP66 ON RE1-530 111-0040 BRACKET. COLOUR DULUX ANODIC BRONZE SATIN FINISH CODE: 096119930 FOR POLES AND LUMINAIRES. TO TCCS SPECIFICATION INCLUDING PE CELL. PROVIDE 10mA RCD AT EACH POLE.
- SHELTER LIGHTING, TOILET LIGHTING OR IRRIGATION CONTROLLER SUPPLY. COORDINATE WITH SHELTER CONTRACTOR FOR CABLE ROUTE THROUGH STRUCTURES TO LIGHTING. PROVIDE 3 OFF WE-EF WE-ETC340-GB IN GROUND UPLIGHTS AT 3 OFF SHELTERS WITHIN PARK TO TCCS SPECIFICATION. PROVIDE SYLVANIA SYLPROOF SS FITTING TO TCCS FITTINGS AT TWO OFF LAKESIDE SHELTERS TO TCCS SPECIFICATIONS.
- BBQ 2 OFF 15A WEATHERPROOF OUTLETS WITHIN BBQ STRUCTURE. COORDINATE WITH BBQ SUPPLIER
- NEW STREETLIGHT CABLE AND CONDUITS - 16MM 2 CORE CABLING. MIN DEPTH 600mm. PROVIDE ADDITIONAL 1x32mm WHITE CONDUIT BETWEEN EACH NEW POLE IN PLAYGROUND AREA. EXTEND TO ADJACENT POE/MSB. FOR FUTURE CCTV. RUN UNDER PATH WHERE POSSIBLE.
- EVOENERGY SUPPLY CONDUIT
- ELECTRICAL SUPPLY CONDUITS AND CABLE. RUN UNDER PATH WHERE POSSIBLE.
- XXX-XXX TCCS ASSET TAG, REQUIRED ON ALL NEW POLES CONNECTED TO STREET CIRCUIT
- SWITCHBOARD - REFER TO DRAWING FOR DETAILS. SWITCHBOARD COLOUR DULUX ANODIC BRONZE SATIN FINISH CODE: 196119930 TO MATCH POLES AND LUMINAIRES.
- CABLE PIT WITH GALVANISED TRAFFICABLE LID. ACO TYPE 33 MINIMUM

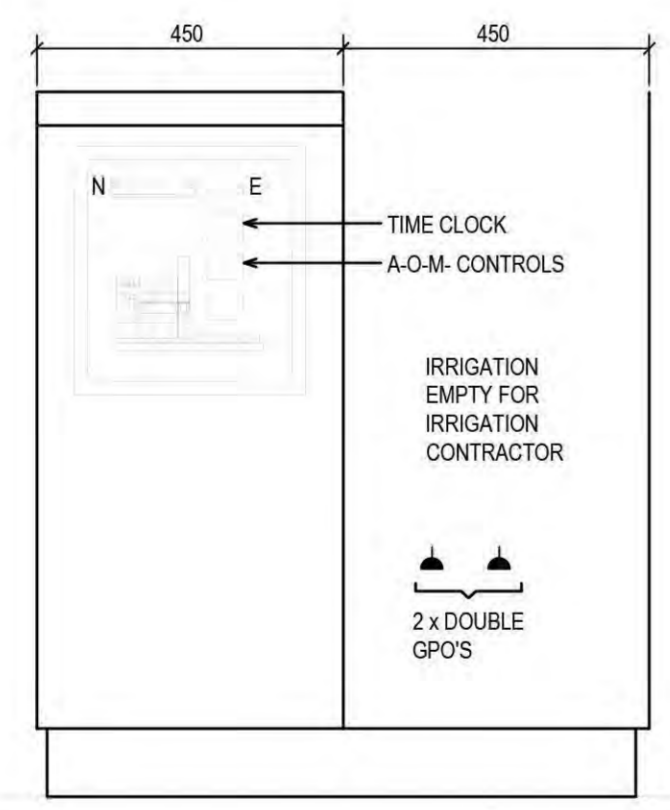
SPECIFICATION NOTES

1. ALL WORK TO BE CARRIED OUT IN ACCORDANCE WITH SECTION 14 - STREET LIGHTING OF THE STANDARD SPECIFICATION FOR URBAN INFRASTRUCTURE WORKS AND AUSTRALIAN STANDARDS, EVOENERGY NETWORKS REQUIREMENTS, AS3000 AND AS3008
2. CABLE ROUTES FOR NEW LIGHT CABLING TO BE LOCATED TO AVOID DAMAGE TO EXISTING TREE ROOTS, SUBSOIL DRAINS, EXISTING AND PROPOSED PATHWAYS AND OTHER SERVICES. REFER TO LANDSCAPE DRAWINGS FOR EXACT LOCATIONS OF ALL EQUIPMENT.
3. CONTRACTOR TO PROVIDE ALL PEDESTRIAN CONTROL MANAGEMENT DEVICES PRIOR TO ANY WORKS COMMENCING ON SITE.
4. CONTRACTOR TO CONTACT TCCS IN RELATION TO WORKING ON THE EXISTING ELECTRICAL CIRCUIT CABLES AND PAY ANY ASSOCIATED ACCESS AND DISCONNECTION FEES.
5. CONTRACTOR TO LOCATE EXISTING ELECTRICAL CIRCUIT CABLES AND DETERMINE LOCATION OF ORIGIN AND AS REQUIRED, ISOLATE AND MAKE SAFE DURING WORKS.
6. CONTRACTOR TO CONTACT TCCS FOR PROVISION OF THE STREET LIGHT COLUMN IDENTIFICATION PLATES AND INSTALL ONTO THE COLUMNS. CONTACT TCCS FOR TAGS AT BEGINNING OF PROJECT. REFER TO SMARTFORM WEBSITE.
7. CONTRACTOR TO COMPLETE ALL NECESSARY NOTICES, PAY ALL FEES AND CHARGES AND ARRANGE FOR ALL INSPECTIONS AND TESTS REQUIRED BY TCCS STREET LIGHT MAINTENANCE MANAGER, ACTPLA AND ASSET ACCEPTANCE, ROADS ACT. CONTRACTOR TO PROVIDE EVIDENCE OF THE SUBMISSION TO ACTPLA TO THE PROJECT SUPERINTENDENT.
8. CONTRACTOR TO PROVIDE PROJECT SUPERINTENDENT WITH A MARKED UP PLAN SHOWING AS EXECUTED WORKS IN ACCORDANCE WITH CLAUSE 14.7.10 OF SECTION 14 - STREET LIGHTING OF THE STANDARD SPECIFICATION FOR URBAN INFRASTRUCTURE WORKS, INCLUDING LOCATIONS OF EXISTING ELECTRICAL CIRCUITRY CABLING, NEW STREET LIGHT COLUMN POSITIONS AND NEW ELECTRICAL CABLING. THIS INFORMATION SHOULD INCLUDE DIMENSIONS SHOWING THE EXACT CABLE/CONDUIT LOCATIONS. THE INFORMATION IS TO BE PROVIDED IN A HARD COPY PLAN AND A CD WITH THE INFORMATION IN AUTOCAD FORMAT.
9. THE CONTRACTOR TO MAKE GOOD ANY DISTURBED AREAS AND LANDSCAPING/PAVING TO THE APPROVAL OF THE PROJECT SUPERINTENDENT.
10. COMPLETE ALL ELECTRICAL WIRING, INCLUDING EXTENDING/RELOCATING EXISTING STREET LIGHT CABLES IN THE NEW COLUMNS AND TERMINATE ON TERMINAL BLOCK AS REQUIRED IN ACCORDANCE WITH AS3000 - 2018 AND TAMS DS12 SERIES DRAWINGS.
11. CONTRACTOR TO ENSURE THAT ALL NEW COLUMNS ARE EARTHED IN ACCORDANCE WITH THE REQUIREMENTS OF AS3000 - 2018, TAMS DRAWING DS 12-01-20, AND ACTPLA.
12. AS REQUIRED THE CONTRACTOR IS TO EXCAVATE AND INSTALL 50MM UPVC ORANGE ELECTRICAL CONDUITS. EXCAVATIONS ARE TO BE UNDERTAKEN BY EITHER OPEN TRENCHING OR UNDER BORING AS NOTED.
13. PROVIDE SITE SWITCHBOARDS AS SHOWN ON THE DRAWING. LIAISE WITH EVOENERGY FOR ALL WORKS. EVOENERGY COSTS FOR SITE SUPPLY TO BE PROVIDED FOR PAYMENT BY THE CLIENT.

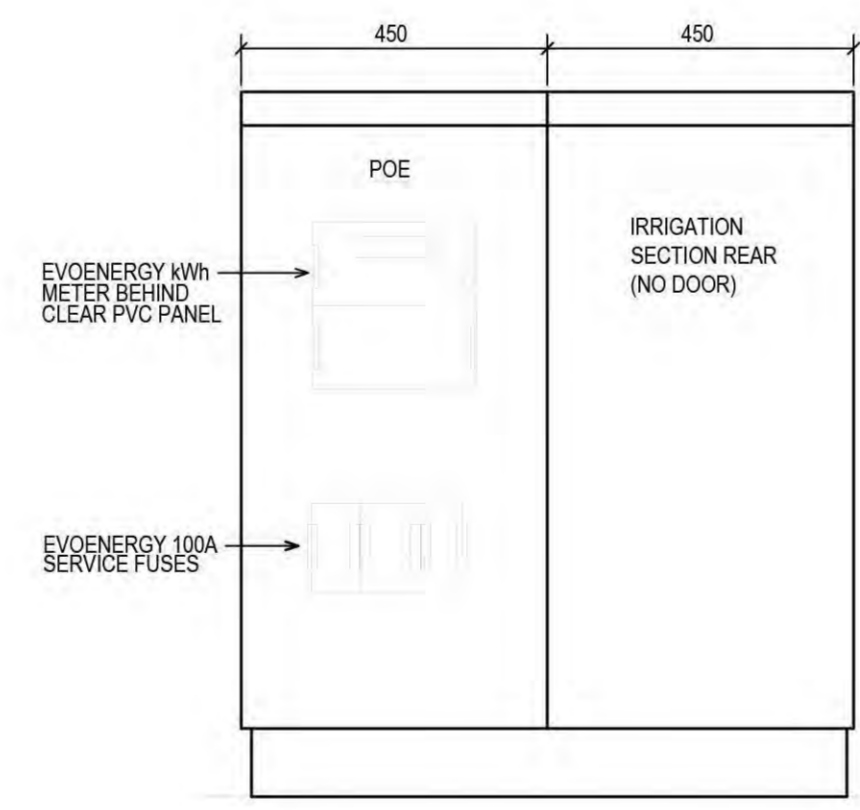


DETAIL 1: FRONT ELEVATION

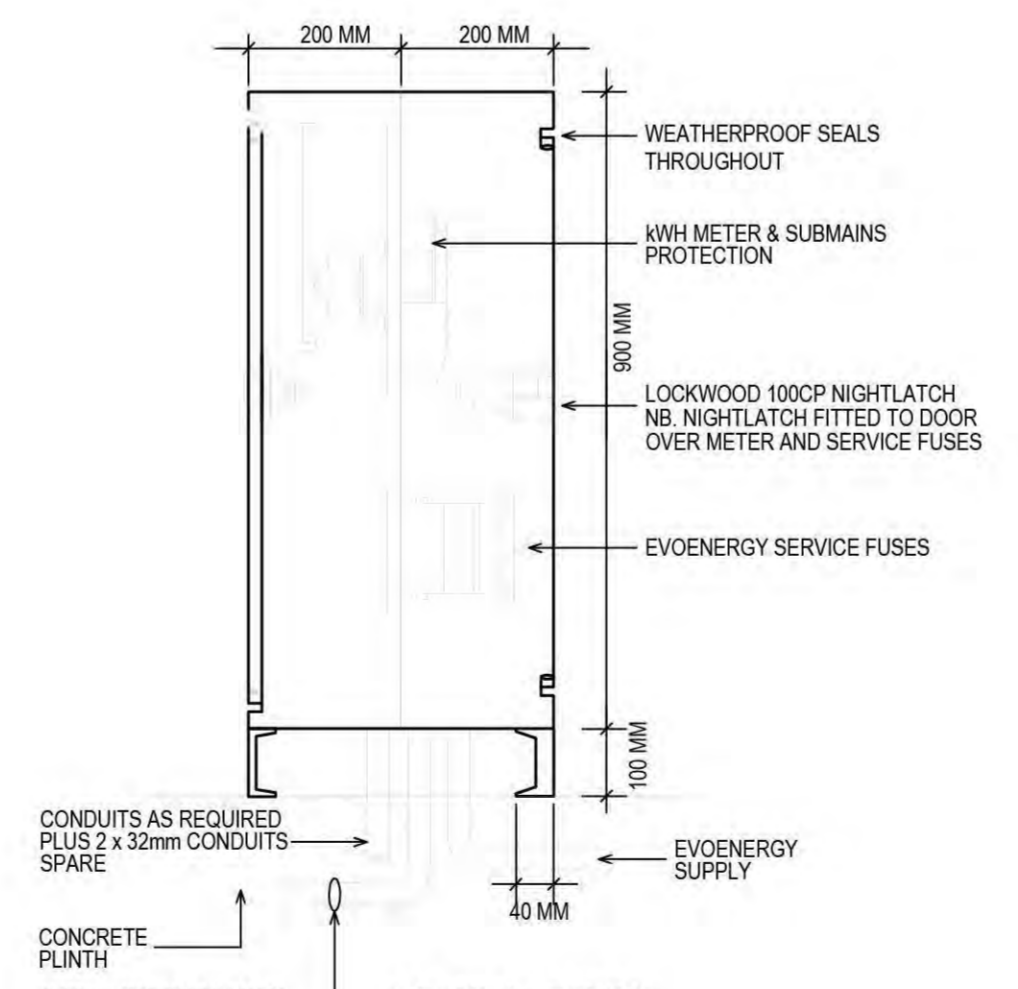
- NOTE:
1. PROVIDE CONCRETE PLINTH WITH 300mm MOWING STRIP.
 2. REFER LANDSCAPE GENERAL ARRANGEMENT PLANS.



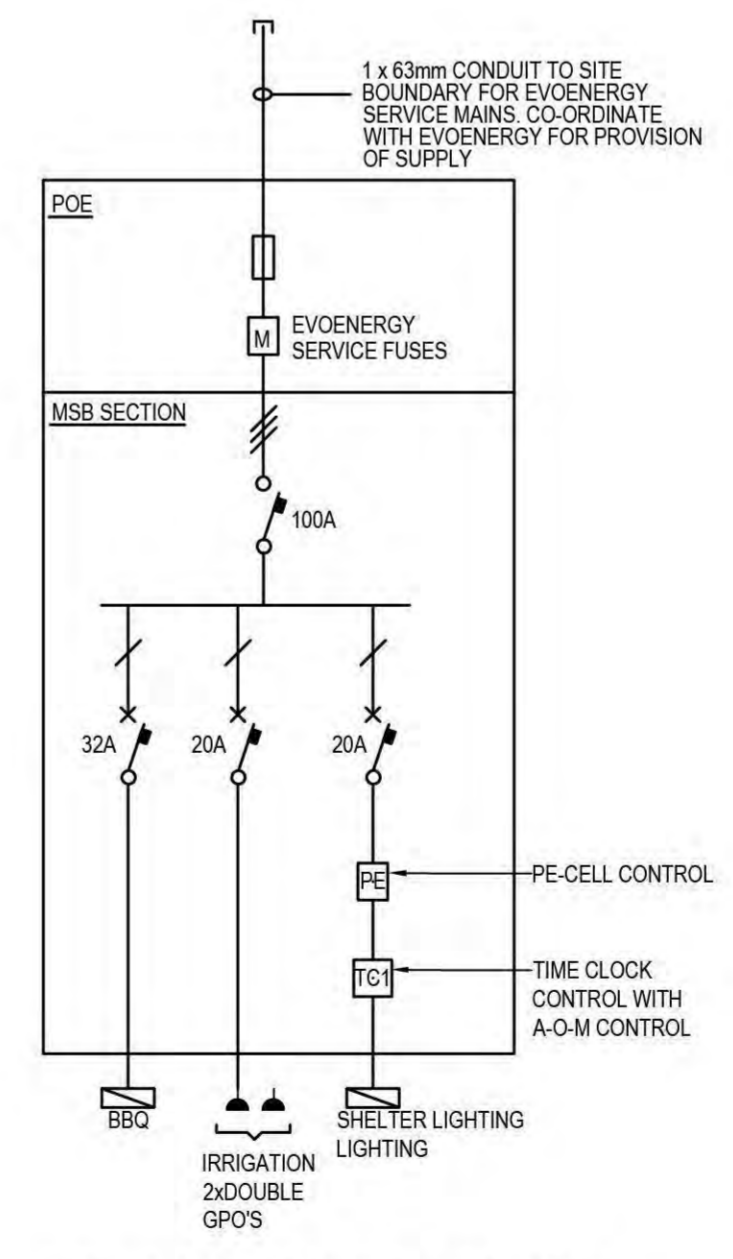
DETAIL 2: FRONT ELEVATION (DOOR REMOVED)



DETAIL 3: REAR ELEVATION (DOOR REMOVED)



DETAIL 4: SECTION



DETAIL 5: POE/MSB SINGLE LINE DIAGRAM

- NOTE:
1. TIME CLOCK SCHNEIDER CCT15723. PROVIDE A-O-M
 2. ALL CIRCUITS RED PROTECTED

SITE POE/MAIN SWITCHBOARD

REV	DATE	DESCRIPTION	BY	CHK	APP
1	04/09/20	FSP	JBR	ACE	GA
2	13/07/20	FSP	JBR	ACE	GA
3	15/09/20	TCCS DESIGN REVIEW	JBR	ACE	GA
4	04/12/20	DR SUBMISSION	JBR	ACE	GA
5	10/02/21	FOR TENDER	JBR	ACE	GA
6	19/02/21	REVISED FOR TENDER	JBR	ACE	GA
7	05/05/21	REVISED FOR TENDER	JBR	ACE	GA
8	13/08/21	FOR CONSTRUCTION	JBR	ACE	GA

CLIENT:

redbox design group

02 6280 4949 (tel)
Unit 12/285 Canberra Avenue Fyshwick ACT
PO Box 4574 Kingston ACT 2604
redboxdesigngroup.com.au

ELECTRICAL CONSULTANT:

AHERN CONSULTING ENGINEERS PTY LTD

10 SEVERNE ST
QUEANBEYAN NSW 2620
P 0406 779 235
F/P 02 6284 2215
E gordon@ahernce.com.au

PROJECT:

COOMBS EDGEWORTH PARADE PLAYGROUND

DRAWING NAME:

ELECTRICAL SERVICES - KEY PLAN, LEGEND, NOTES, AND DETAILS

DRAWING NO:	19008-E1	REVISION:	8	SHEET SIZE:	A1
SCALE:	1:5000	DRAWN:	JBR	APPROVED:	ACE

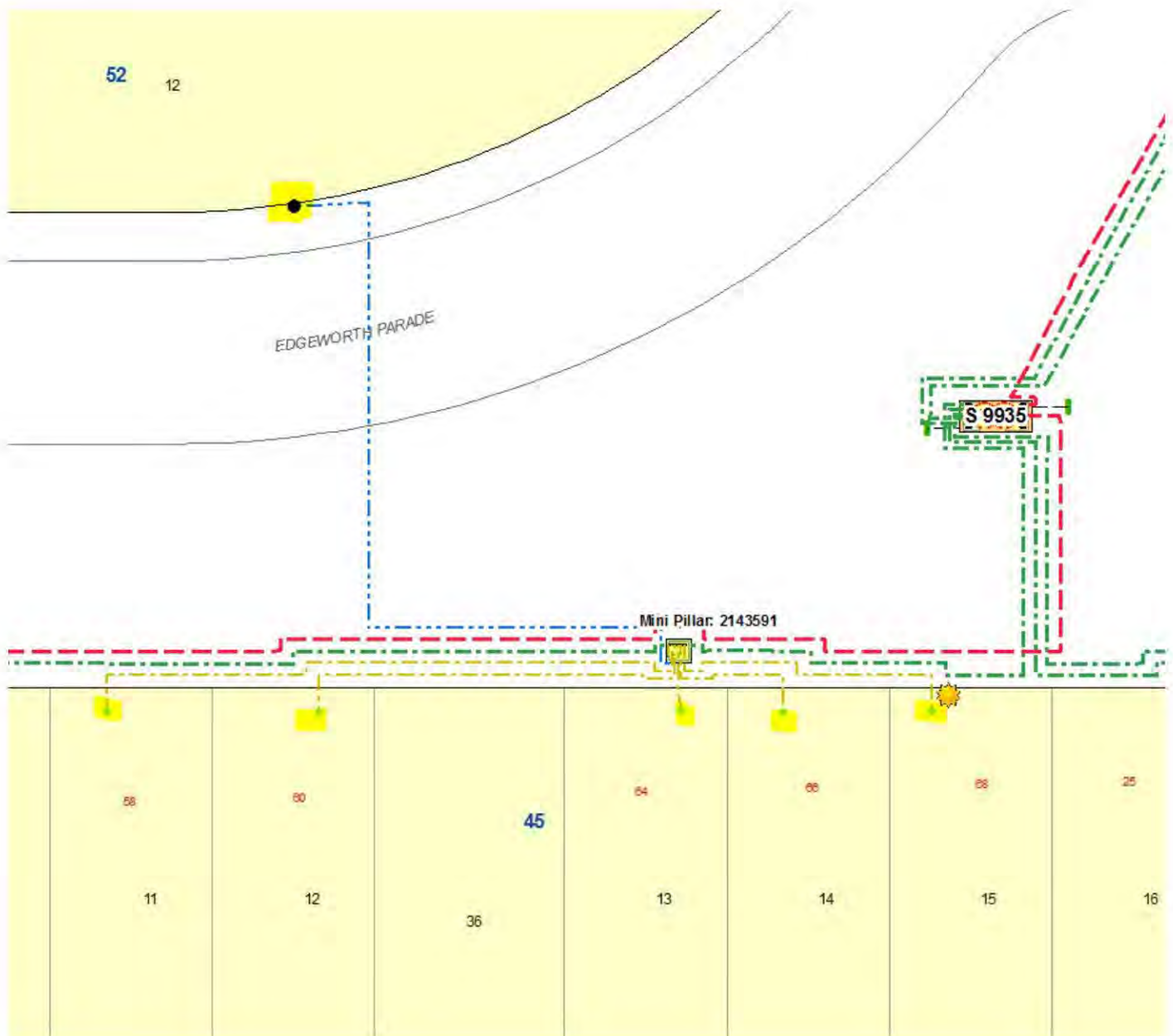
From: "Network Connection Application" <Network.ConnectionApplication@evoenergy.com.au>
Sent: 05/05/2021 10:14 AM
To: [REDACTED]
Subject: RE: Coombs pillar 2143591

Hi [REDACTED]

Please refer below network map. Happy to discuss

Regards

[REDACTED]



From: [REDACTED]
Sent: Tuesday, 4 May 2021 5:49 PM
To: Network Connection Application <Network.ConnectionApplication@evoenergy.com.au>
Subject: RE: Coombs pillar 2143591

CAUTION: This email originated from outside of the organisation. Do not click links or open attachments unless you recognise the sender and are expecting the content or attachment from the sender

Do not worry about this unless it is easy – I think I found what I need

[Redacted]

Ahern Consulting Engineers

[Redacted]

From [Redacted]
Sent: Tuesday, 4 May 2021 5:41 PM
To: 'Network Connection Application' <Network.ConnectionApplication@evoenergy.com.au>
Subject: Coombs pillar 2143591

Big favour – can you tell me what is connected to Coombs pillar 2143591- maybe a screenshot of cabling in particular to lighting near the lake

Thanks heaps – someone from TCCS is very officious about the extra 2 amps we are adding that I do not normally worry about

[Redacted]

Ahern Consulting Engineers

[Redacted]

PLEASE NOTE This email and any attachments may be confidential. If received in error, please delete all copies and advise the sender. The reproduction or dissemination of this email or its attachments is prohibited without the consent of the sender.

WARNING RE VIRUSES: Our computer systems sweep outgoing email to guard against viruses, but no warranty is given that this email or its attachments are virus free. Before opening or using attachments, please check for viruses. Our liability is limited to the re-supply of any affected attachments.

Any views expressed in this message are those of the individual sender, except where the sender expressly, and with authority, states them to be the views of the organisation.






!

ETC340-GB LED

Inground luminaires

4/9

Choices

Light Distributions	Nominal Lumen	Nominal Watt	Colour Temperatures	Colours
 symmetric, wide beam [B]	2796	24	2700 K	 Stainless Steel
 symmetric, medium beam [M]	2951	36		
 symmetric, very narrow beam [EE]	4440		3000 K	
 symmetric, very narrow beam, 'sharp cut-off' [EES]	4680		4000 K	
	5400			

Please confirm the following below

Wattage: 24W or 36W (please confirm)

Colour Output: 3000K or 4000K (please confirm)

Light Distribution: **Medium**
(please confirm from above options)

Shelter Lighting: ETC340-GB
Quantity: 3

Name: 

Signature: 

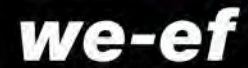
Date Signed: 17/11/12

I confirm that I have checked this sign off confirmation and that it is accurate as per goods ordered on my purchase order. I also accept full responsibility and ownership of these goods and agree to process them as per Integral Lightings terms and conditions

*** Please confirm wattage, colour output and Beam Distribution before Sign Off ***

VFL530-SE LED

108-1880+A8061




Description

IP66, Class I or Class II. IK08. Marine-grade die-cast aluminium alloy. 5CE superior corrosion protection including PCS hardware. Silicone CCG® Controlled Compression Gasket. RFC® cover. CAD optimised OLC® optics for superior illumination and glare control. The luminaire is factory-sealed and does not need to be opened during the installation. Brackets to be ordered separately.

Beam Type asymmetric, side-throw beam [P65]

Lamp Type LED-12/24W / 700 mA - 4000 K

CRI 80

Gear Type EC NEMA 7P DALI

Nominal Luminous Flux (lm)

LED Lumens 245.9 lm

LEDs 12

Total Lumens 2951 lm

T_J 85 °C

Rated Luminous Flux (lm)

LED Lumens 220.6 lm

Total Lumens 2647.8 lm

T_a 25 °C

Rated Input Power 28 W

Name: _____

Signature: _____

Date Signed: 17/11/21

I confirm that I have checked this sign off confirmation and that it is accurate as per goods ordered on my purchase order. I also accept full responsibility and ownership of these goods and agree to process them as per Integral Lightings terms and conditions

Type B: 108-1880 + A8061
Quantity: 18

Type B Colour: Anodic Bronze
(Please confirm custom colour code of Type B)

***** Please confirm custom colour code for Type B fittings before Sign Off *****

Ø42mm OD x 150 long
spigot to suit WEEF
VFL530 SE

95°

Column painted
Closest Acrathane match
to Dulux Anodic Bronze
Satin 096119930

6540

6660

1100

Ø 60

250

Ladder Rest

6655

5555

50

Access
Door

1500

600

Ground Level

375

Cable
Entry

1500

Ø 219.1 OD

Note: Access Door
located on right hand
side when column is
viewed from roadway

SIDE VIEW

FRONT VIEW

10/11/21

NOTE : MANUFACTURING WILL NOT COMMENCE UNTIL SIGNED DRAWINGS ARE RETURNED.

DRAWING APPROVED BY CUSTOMER SIGNED

DATE / /

Notes

1. All dimensions shown are in mm.
2. Column design to comply with AS 1170 & as1798.
3. All welding to comply with AS 1554.
4. Galvanizing to conform to AS/NZS 4680.
5. Paint finish to AS 3887 category long term.

Title: VPACTF6.5M
Color: CLOSEST DULUX ACRATHANE MATCH
TO ANODIC BRONZE SATIN 096119930

- 1
- 2
- 3
- 4

Client:
Job No. Quantity:
Quote No. Date:
Modified: Checked:
Approved By: T.W () S.I ()
CAD File No. VPACTF6.5M.asm

Project: COOMBS PARK

VICPOLE
STREETSCAPE SOLUTIONS
31 - 35 Barry St
Bayswater Vic 3158

© Copyright CONFIDENTIAL: This drawing is the property of Vicpole. No disclosure or copy of it may be made without written permission