

U-value

1.8

(2.8)

Shading

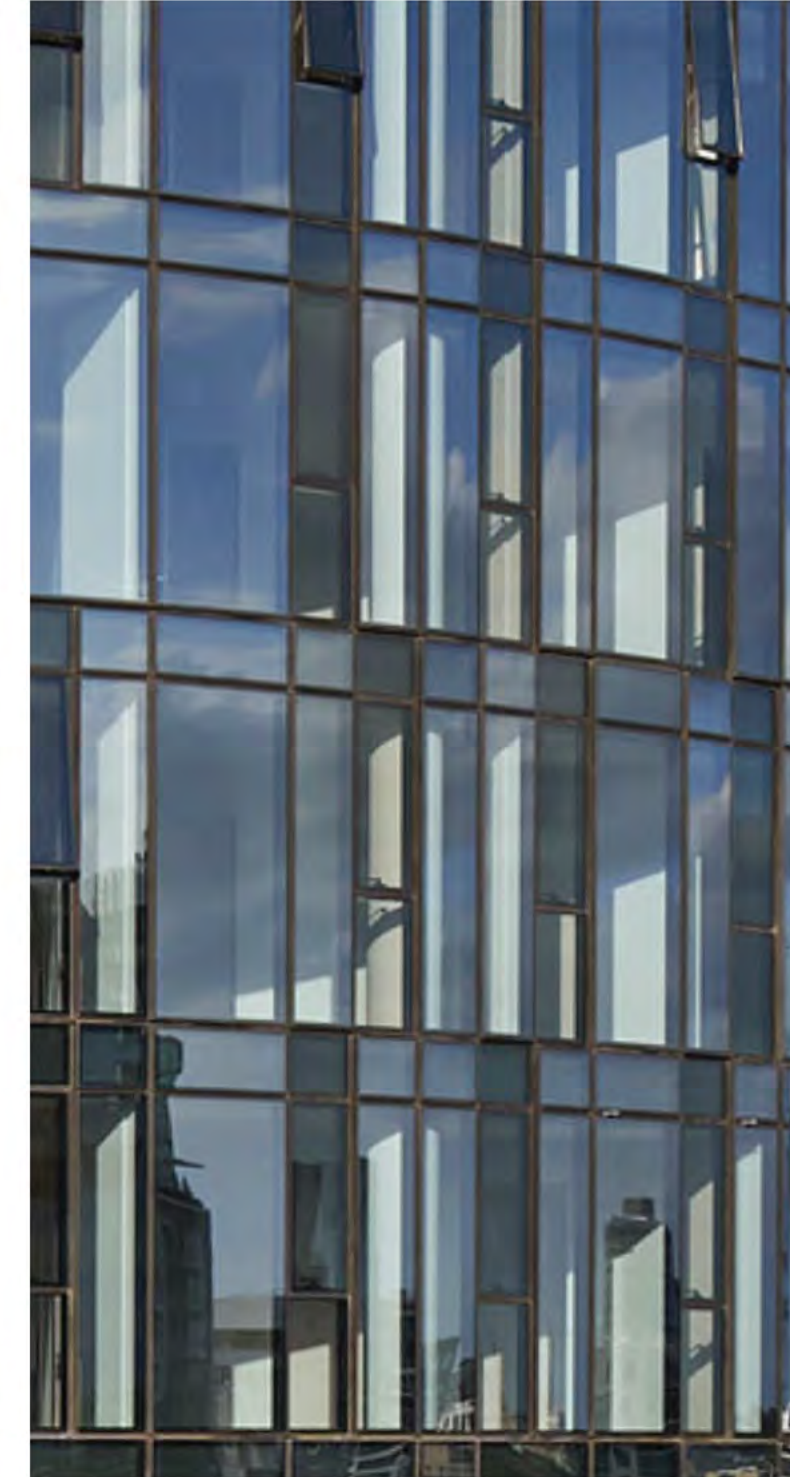
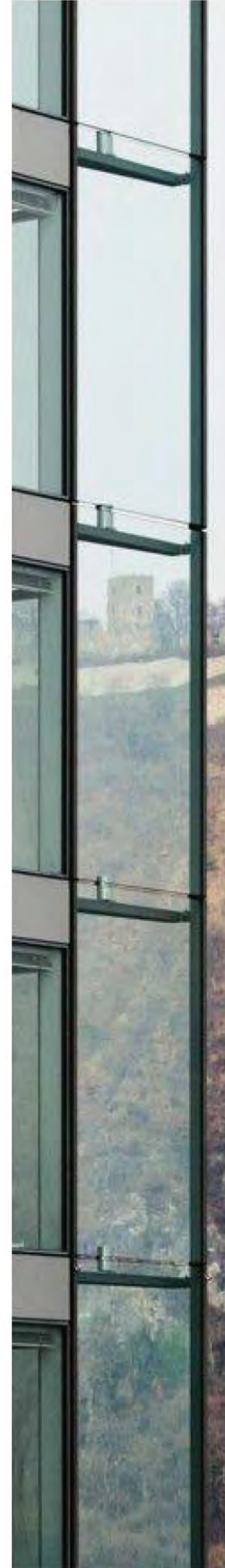
40%

(0)



Built Form

Materiality



DRP ADVICE 10.1

The Panel notes that the materiality of the proposal was not discussed in detail at the design review session however, the Panel considered the current extensive glazed façade presented to be incongruous with the setting of a proposed development within the National Triangle. Given the early design phase of the proposal, the Panel encourages the proponent team to develop a strong vision for the proposal which is 'of place' and consider implementing a materiality and architectural expression appropriate to the residential use as well as the civic nature and setting of the development.



National Library of Australia



High Court Australia

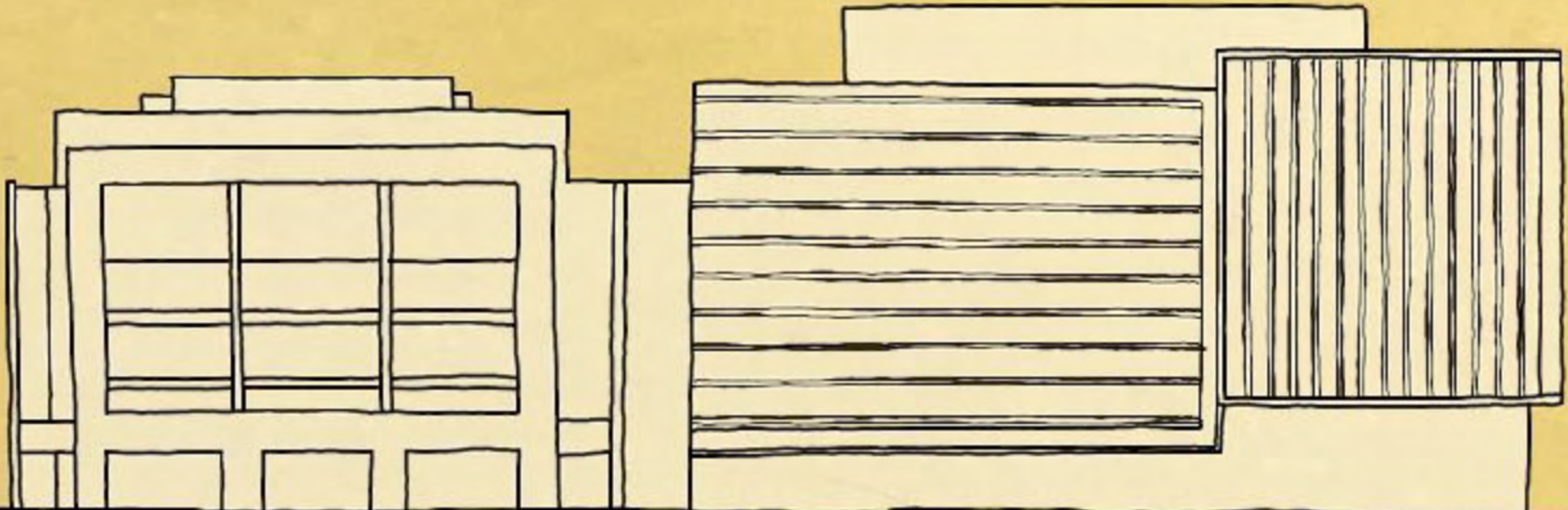


National Gallery of Australia

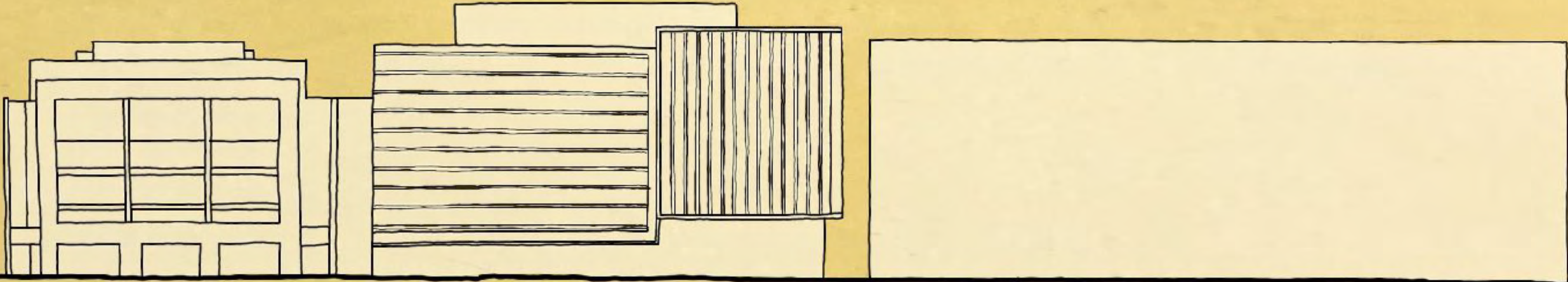


National Carrillon

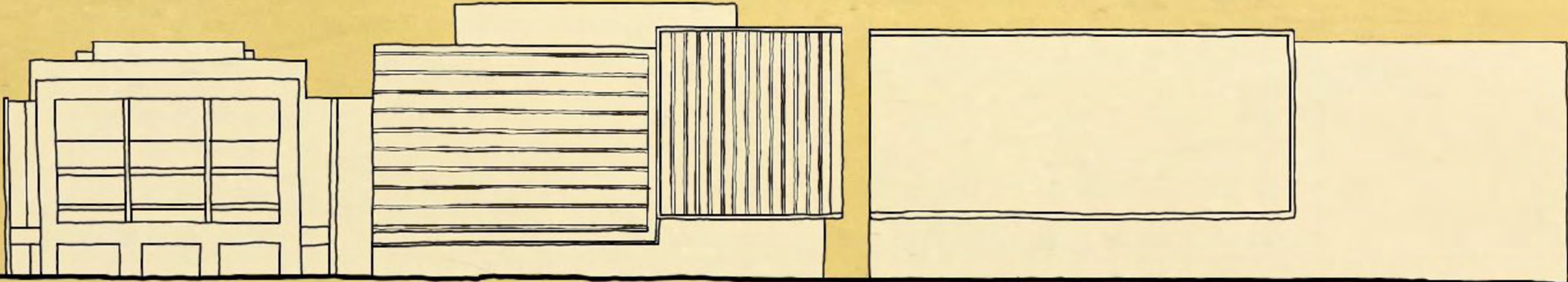
London Circuit street elevation



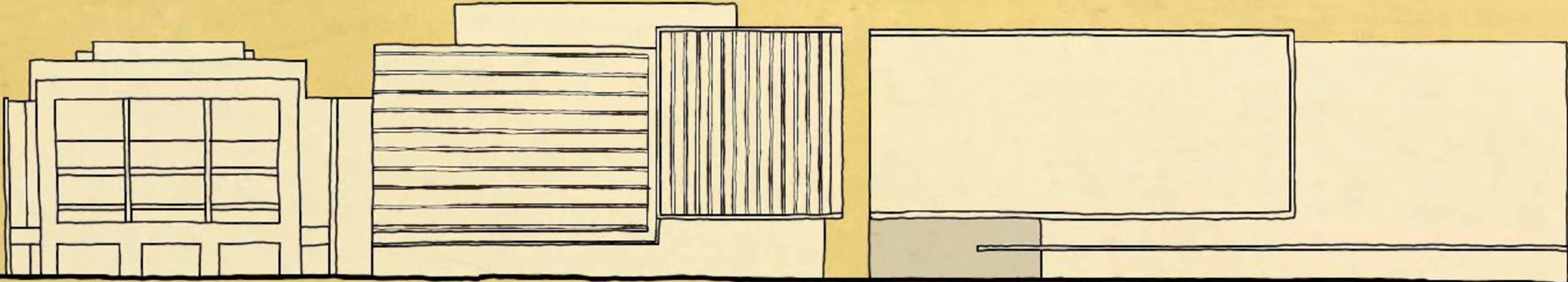
London Circuit street elevation



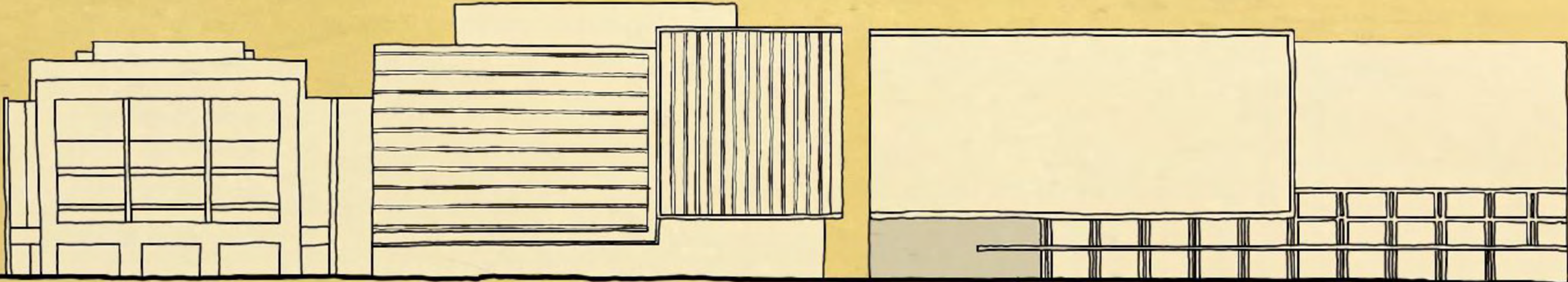
London Circuit street elevation



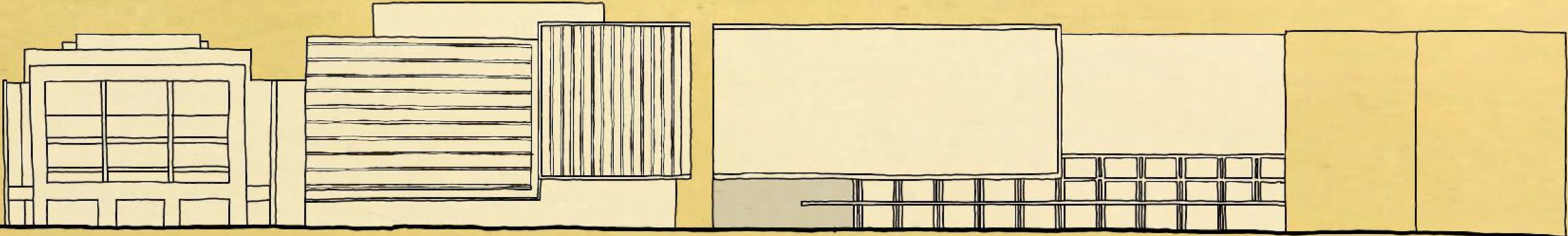
London Circuit street elevation



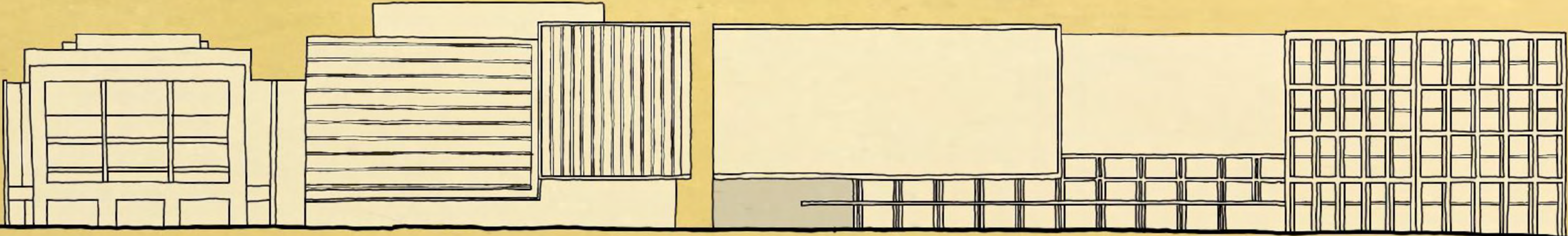
London Circuit street elevation



London Circuit street elevation



London Circuit street elevation



London Circuit street elevation



Parkes Way



Allara Street

