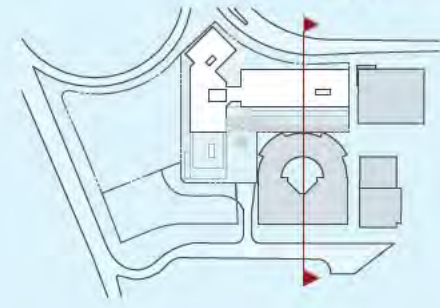


Supplementary Information

Sections

Section AA

KEY PLAN



LONDON CIRCUIT

3 360

PROPOSED BUILDING

16 240

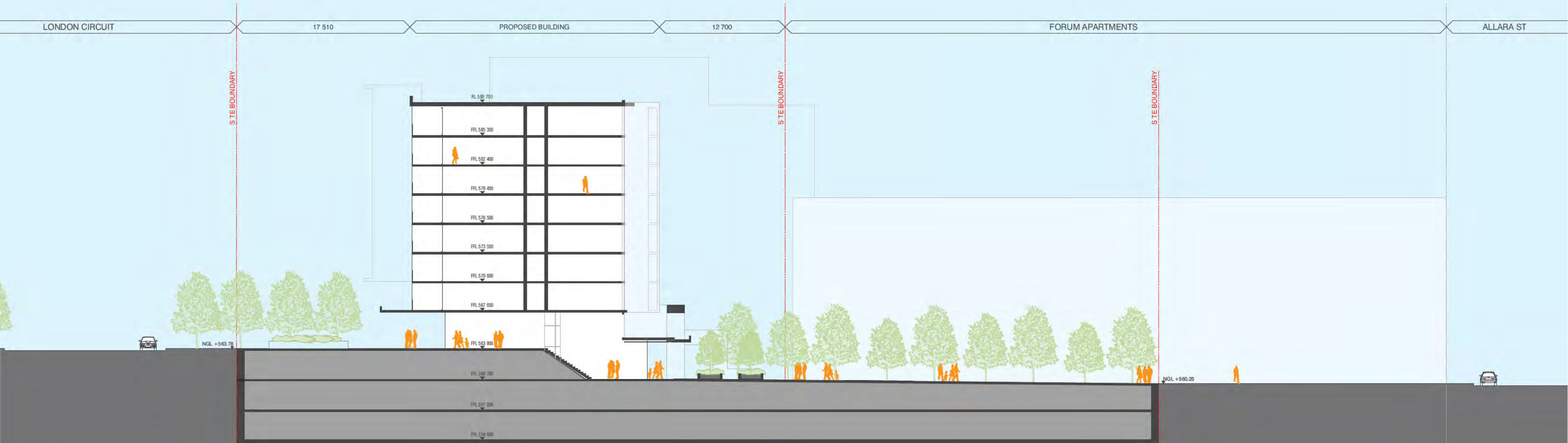
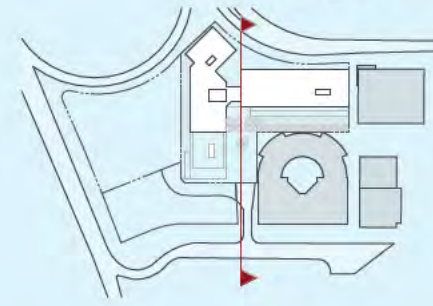
FORUM APARTMENTS

ALLARA ST



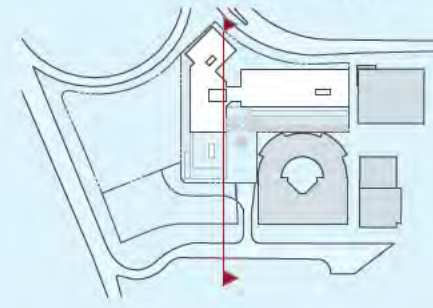
Section BB

KEY PLAN



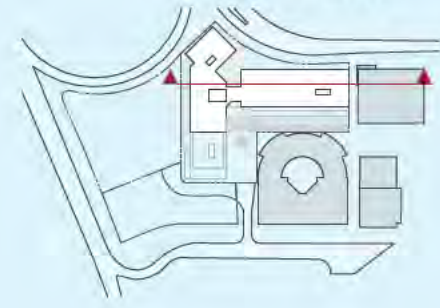
Section CC

KEY PLAN



LONDON CIRCUIT 4790 PROPOSED BUILDING 3 000 ACCESS TO BLOCK 19 BLOCK 18 ALLARA ST



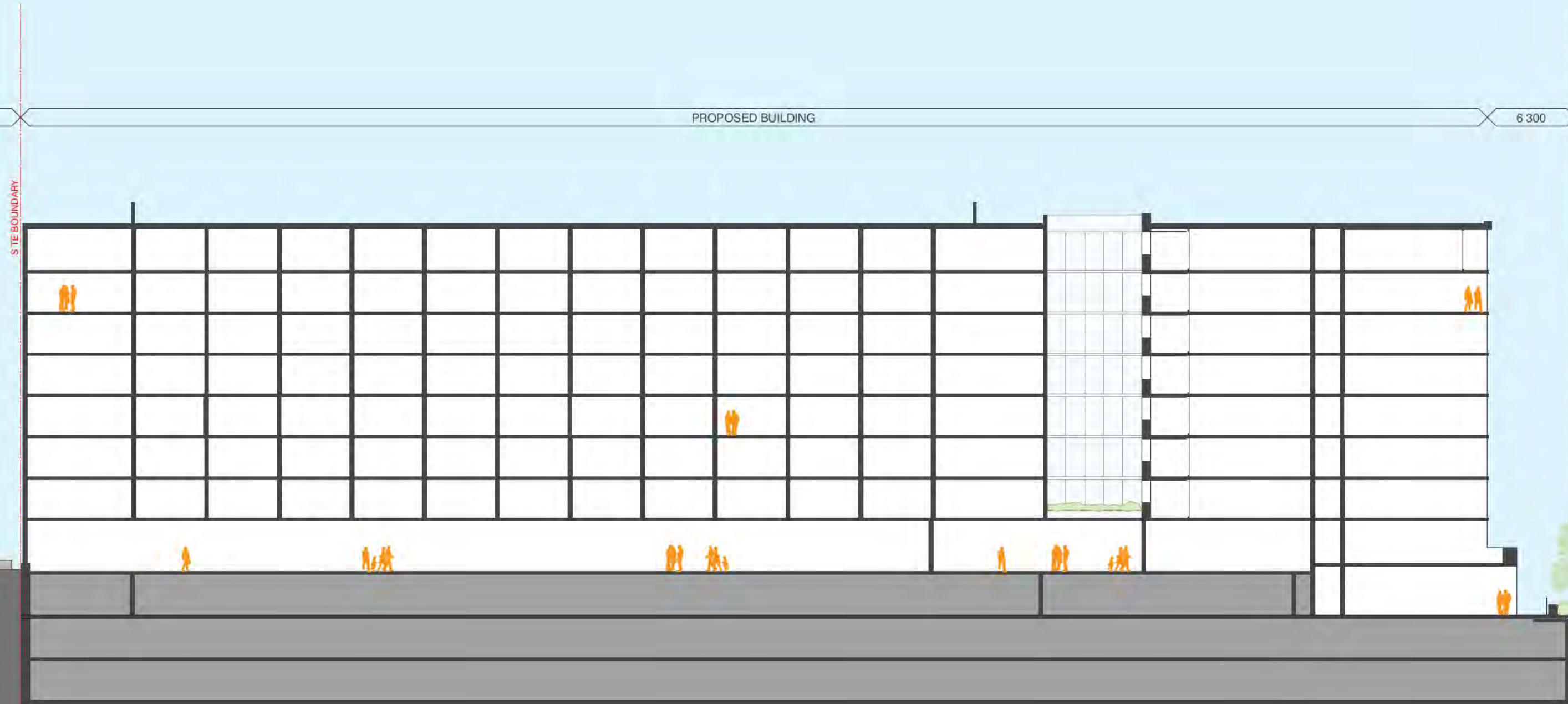


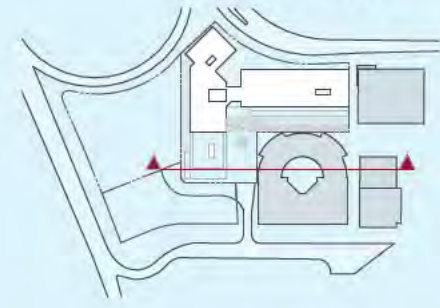
DFAT

PROPOSED BUILDING

6 300

BLOCK 19





64 ALLARA ST

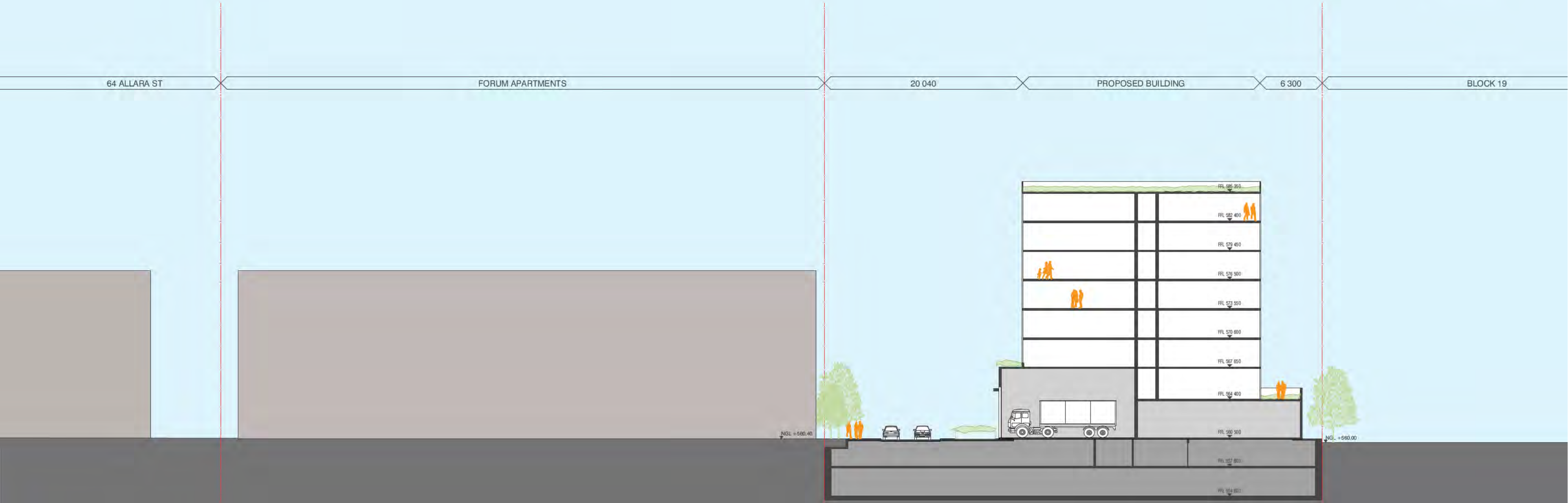
FORUM APARTMENTS

20 040

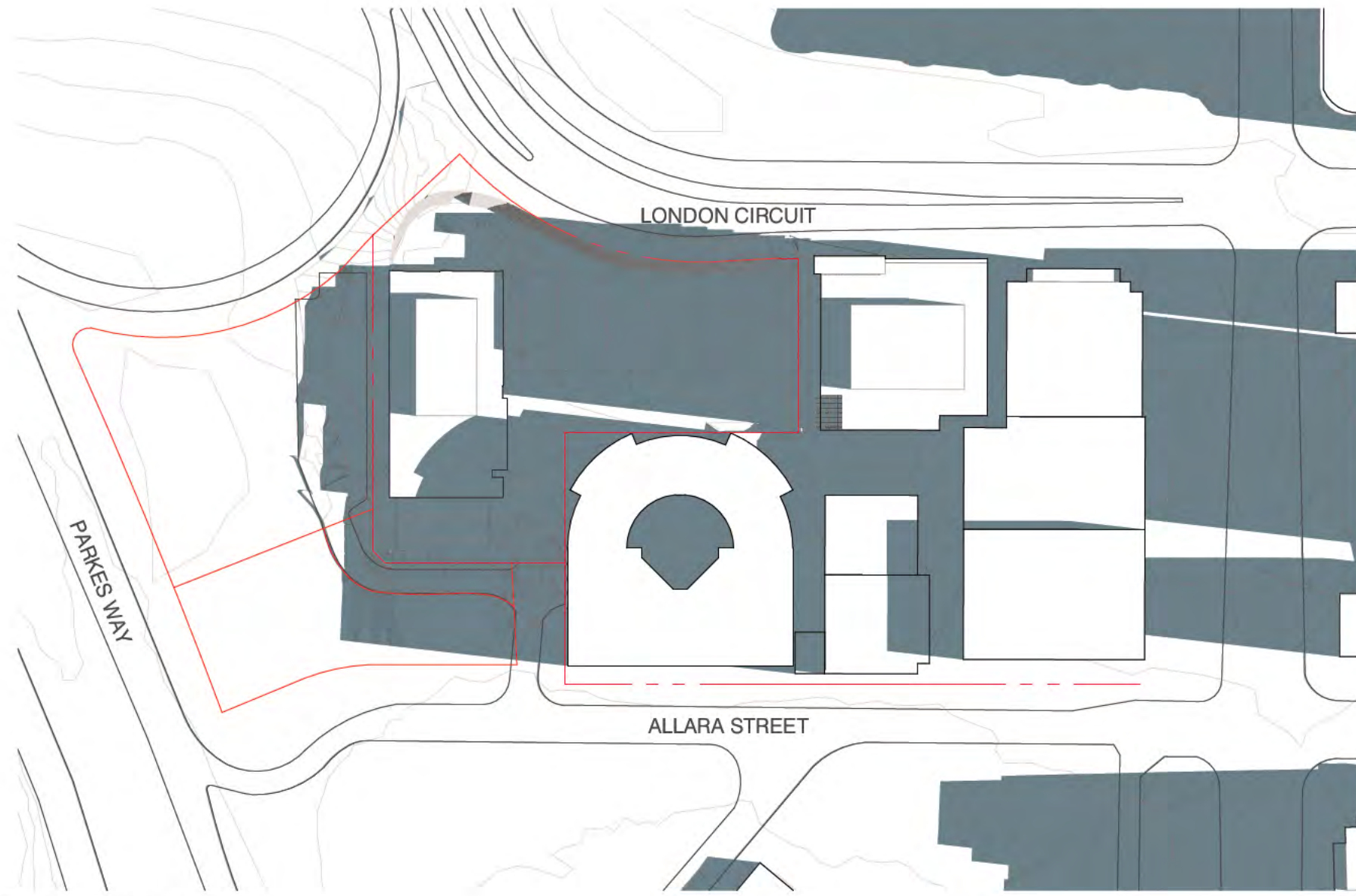
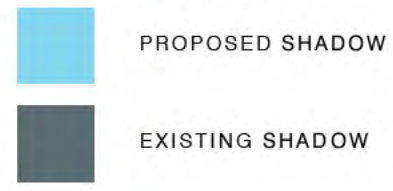
PROPOSED BUILDING

6 300

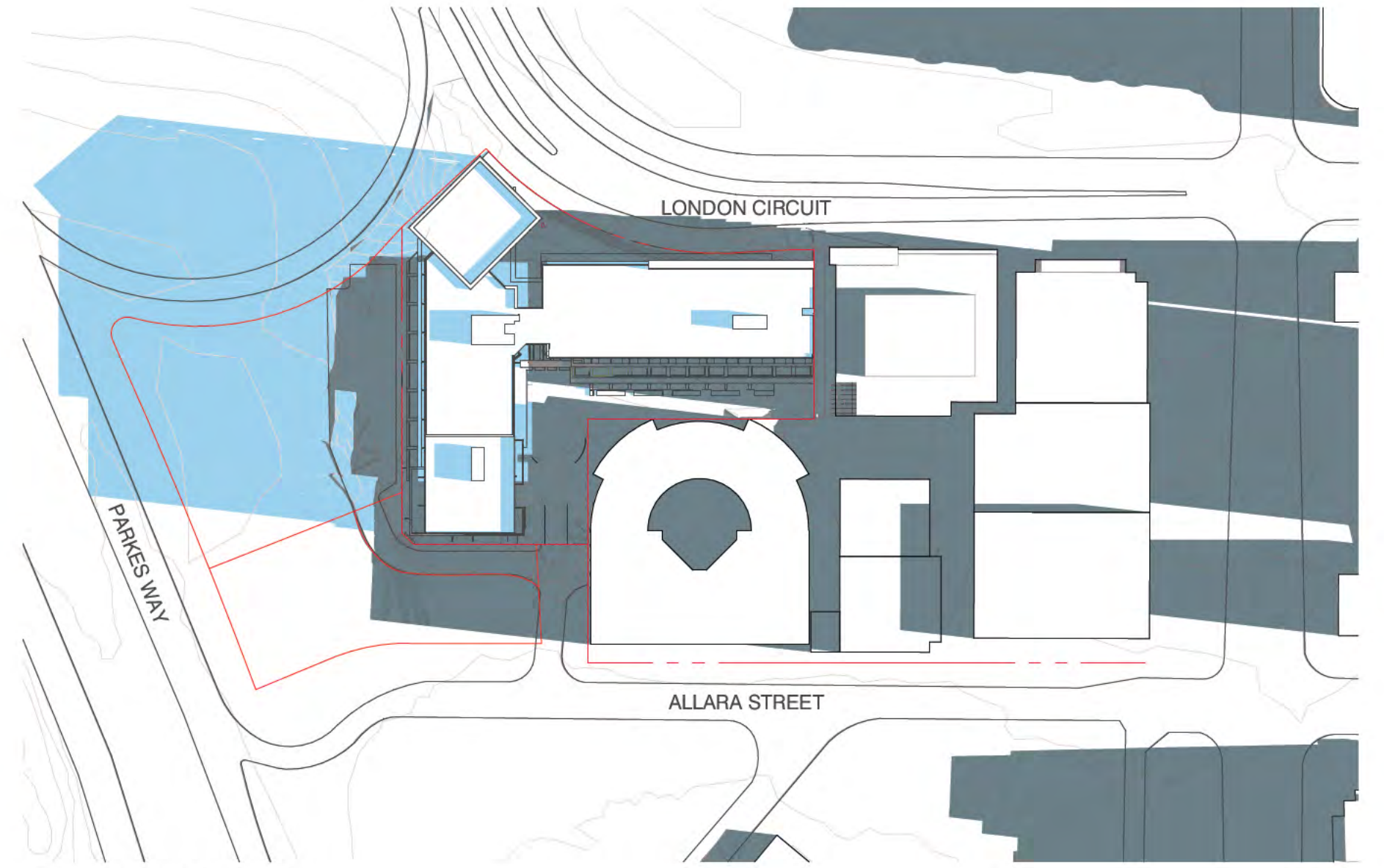
BLOCK 19



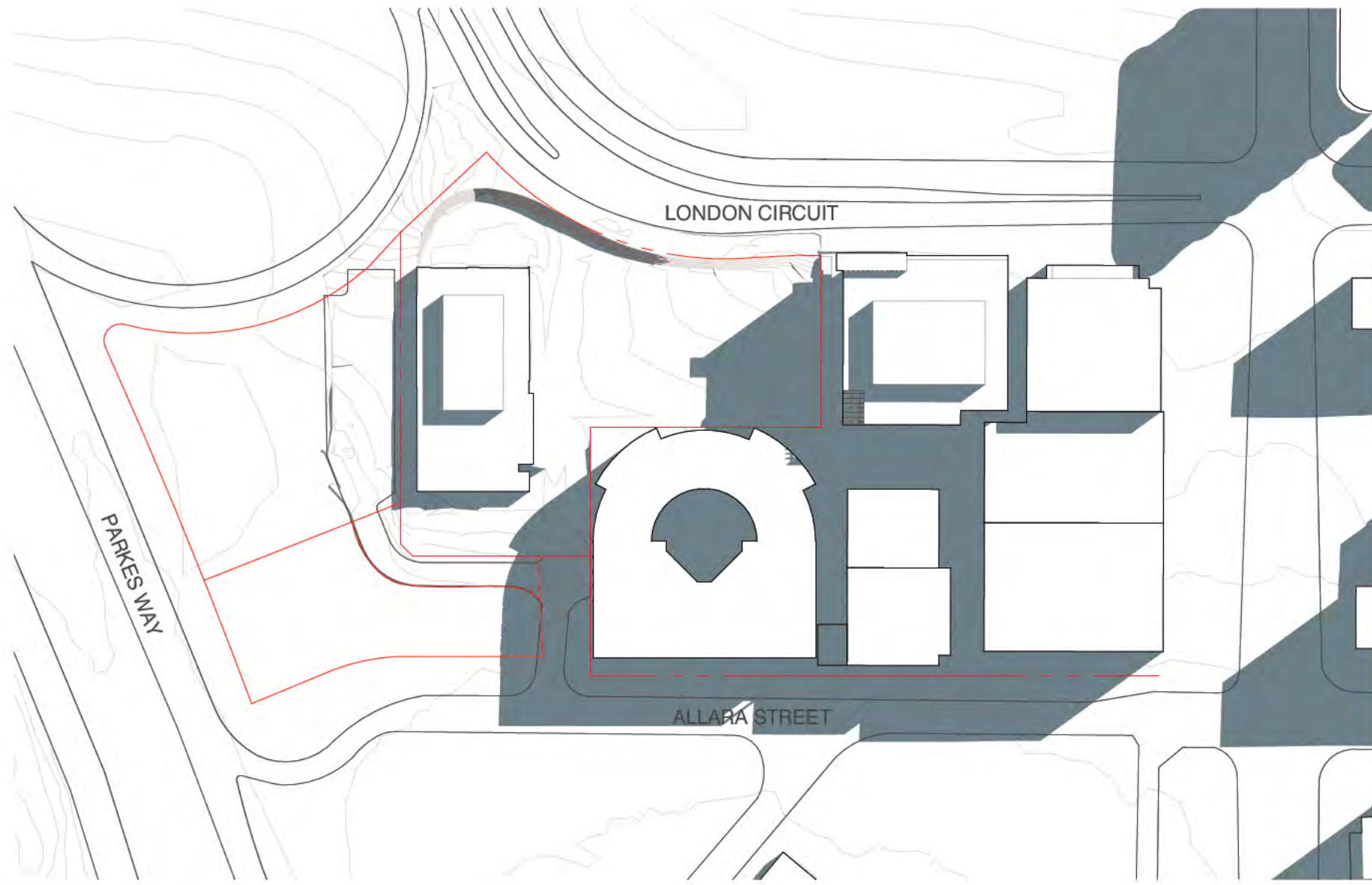
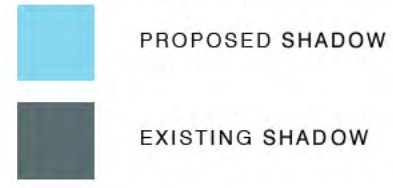
Shadow Diagrams



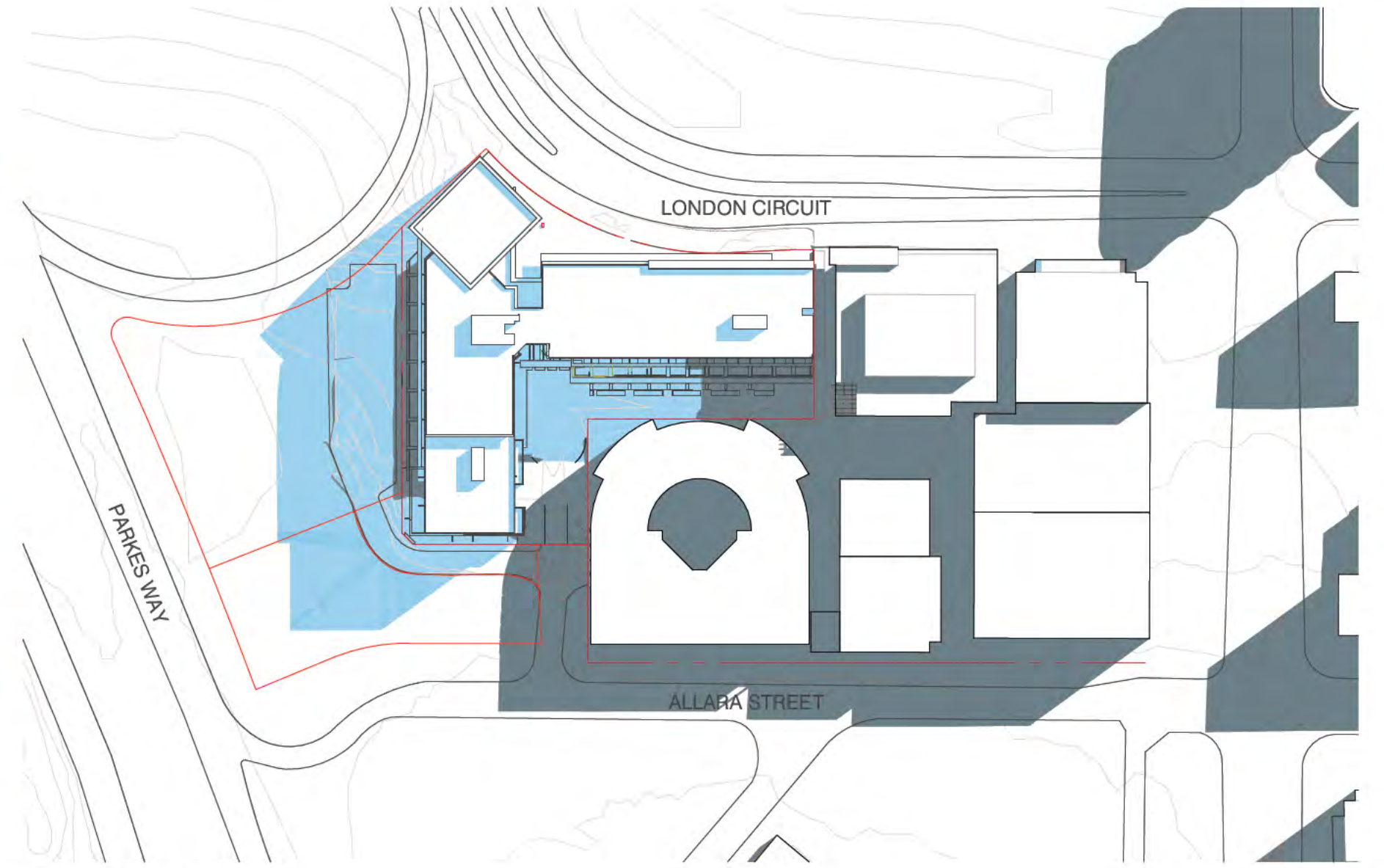
01 EXISTING SHADOWS
SCALE 1:1500@A3



02 PROPOSED SHADOWS
SCALE 1:1500@A3@A1

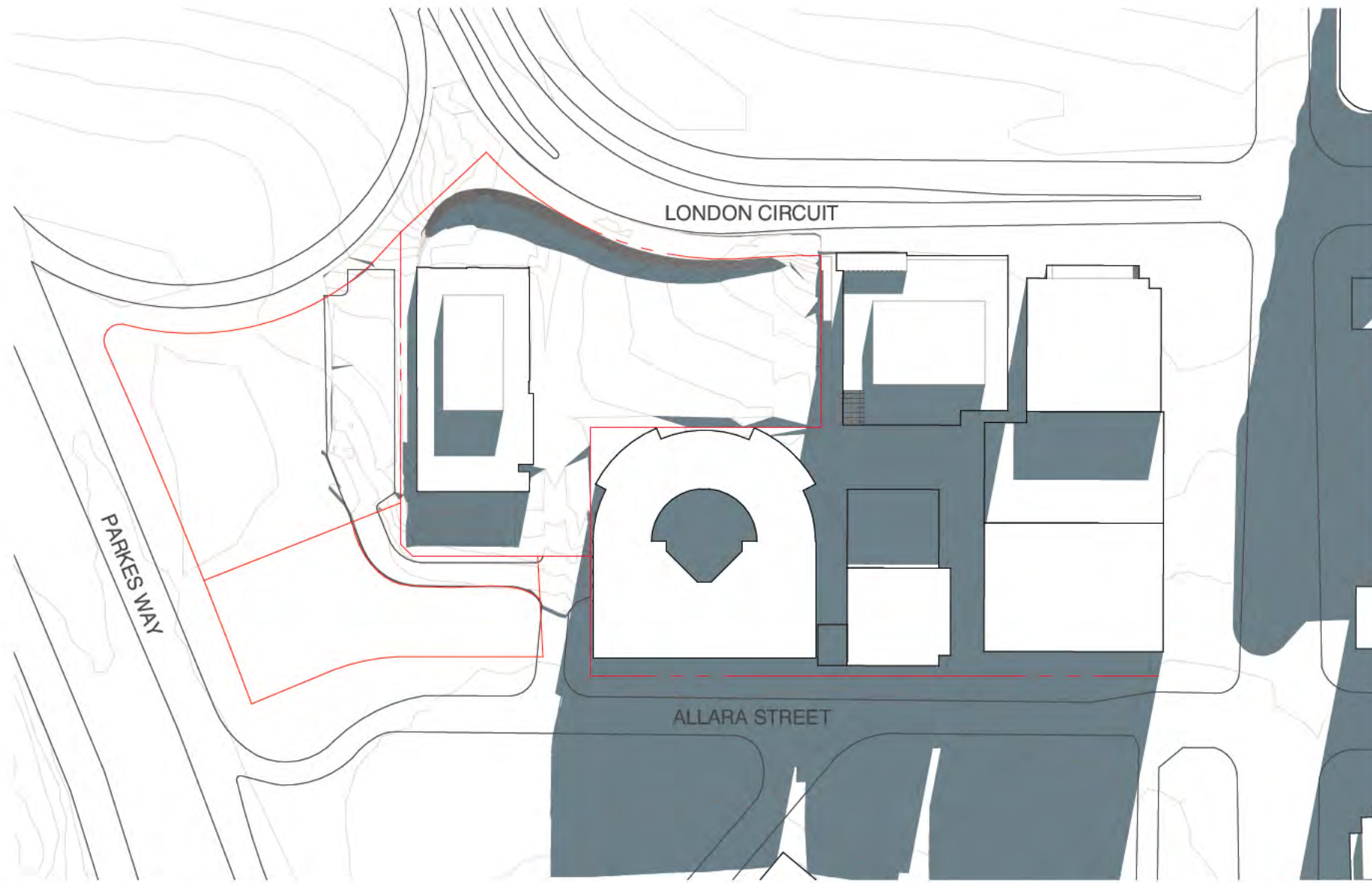
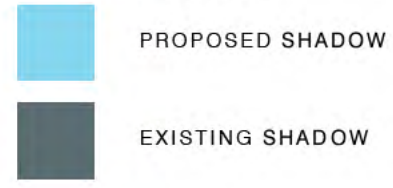


01 EXISTING SHADOWS
SCALE 1:1500@A3

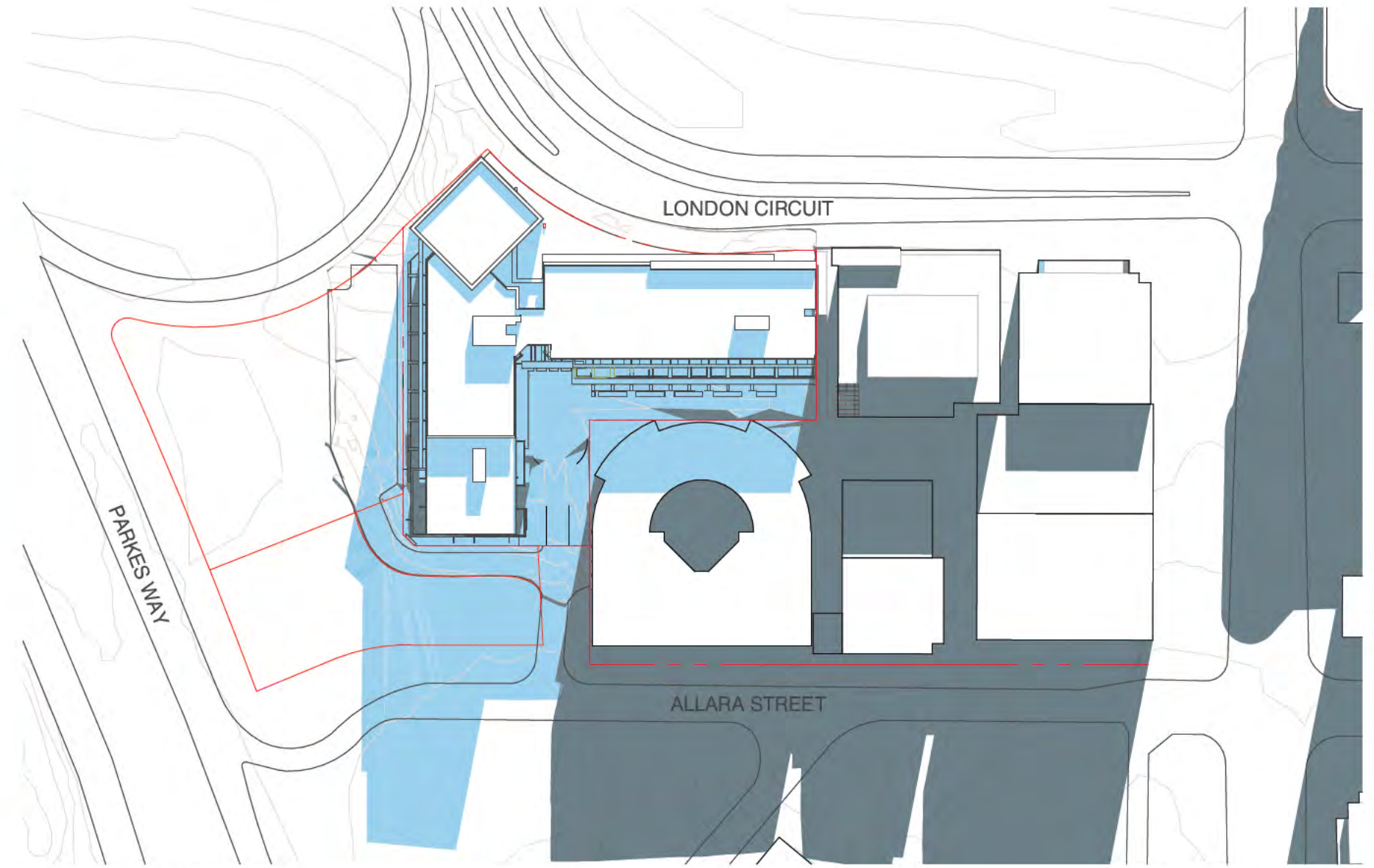


02 PROPOSED SHADOWS
SCALE 1:1500@A3@A1





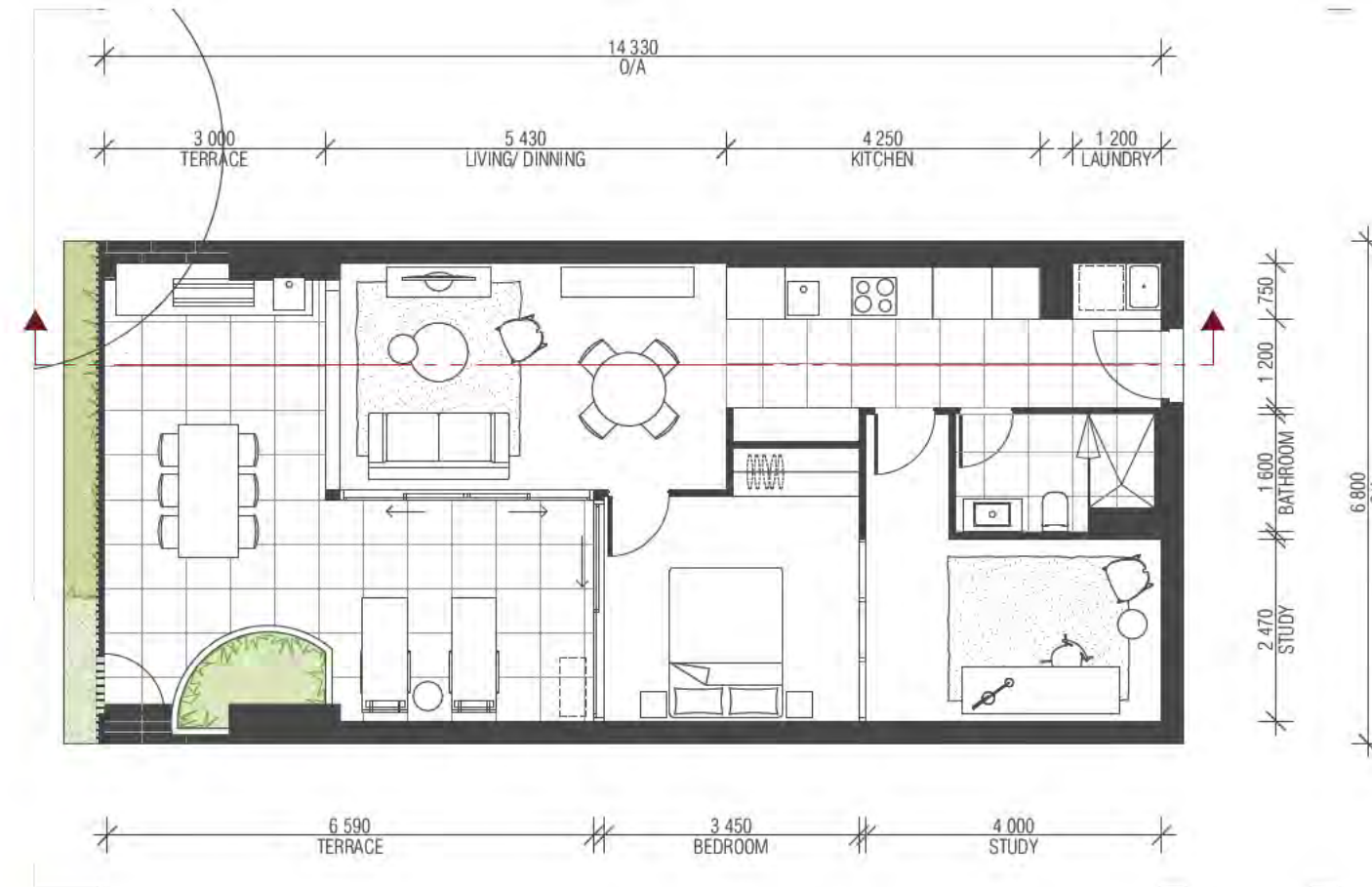
01 EXISTING SHADOWS
SCALE 1:1500@A3



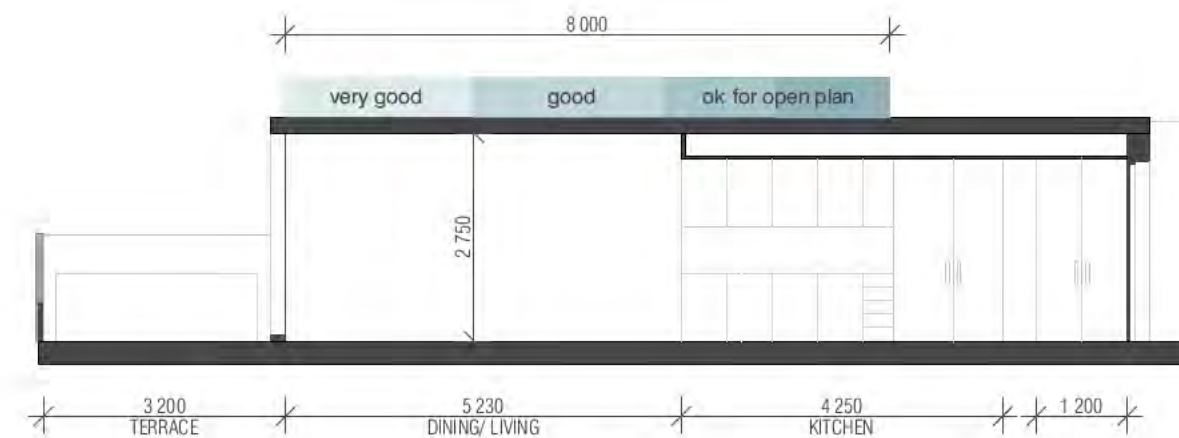
02 PROPOSED SHADOWS
SCALE 1:1500@A3@A1

Typical Apartments

Typical 1BR Apartment Lower Ground Floor

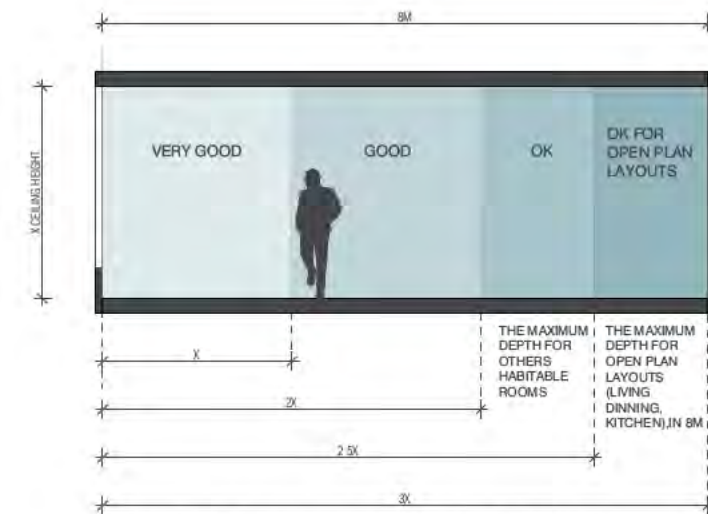
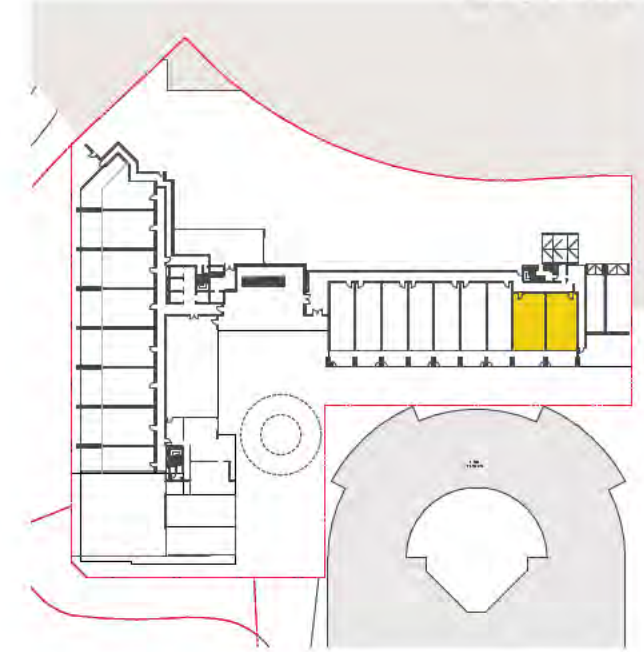


APARTMENT PLAN



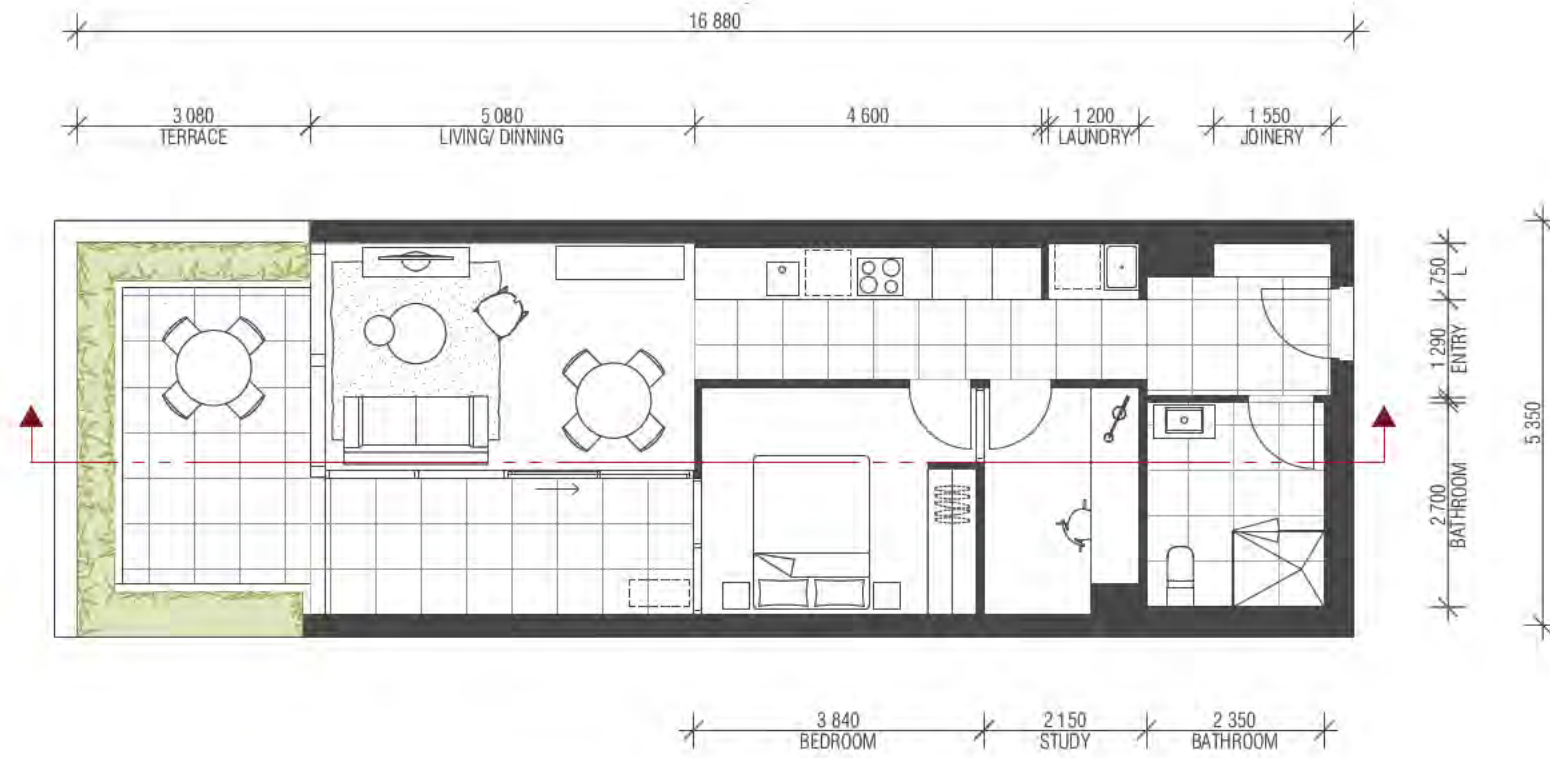
SECTION PLAN

KEY PLAN

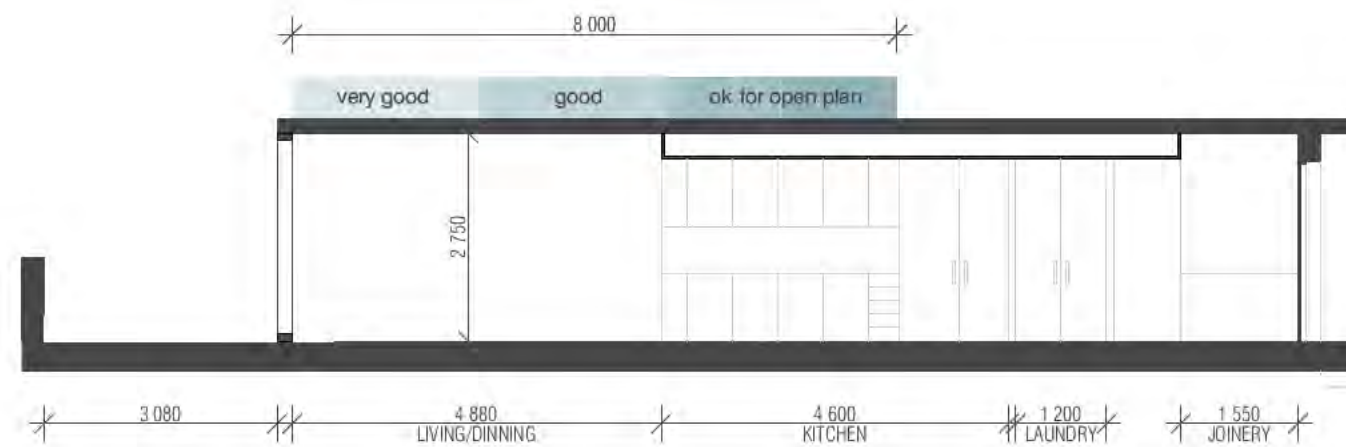


NOTE: THE DEPTH OF A SINGLE ASPECT APARTMENT RELATIVE TO THE CEILING HEIGHT DIRECTLY INFLUENCES THE QUALITY OF NATURAL VENTILATION AND DAYLIGHT ACCESS. THE MAXIMUM DEPTH OF OPEN PLAN LAYOUTS THAT COMBINE LIVING, DINING AND KITCHEN SPACES IN 8M.

Typical 1BR Apartment Ground Floor

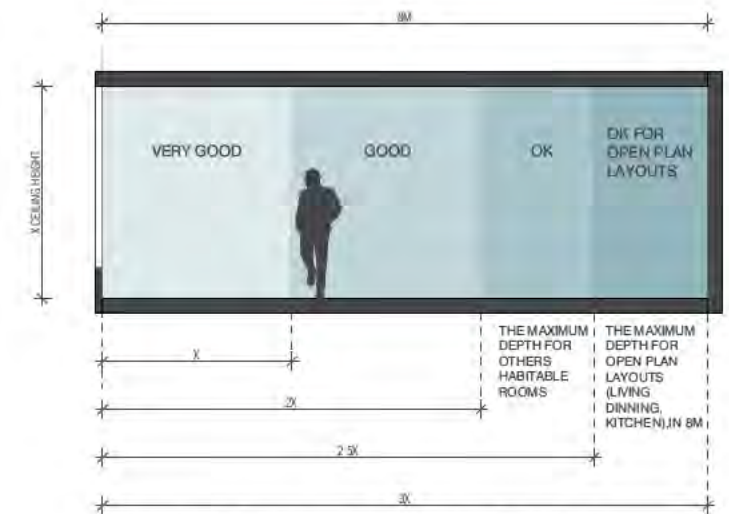
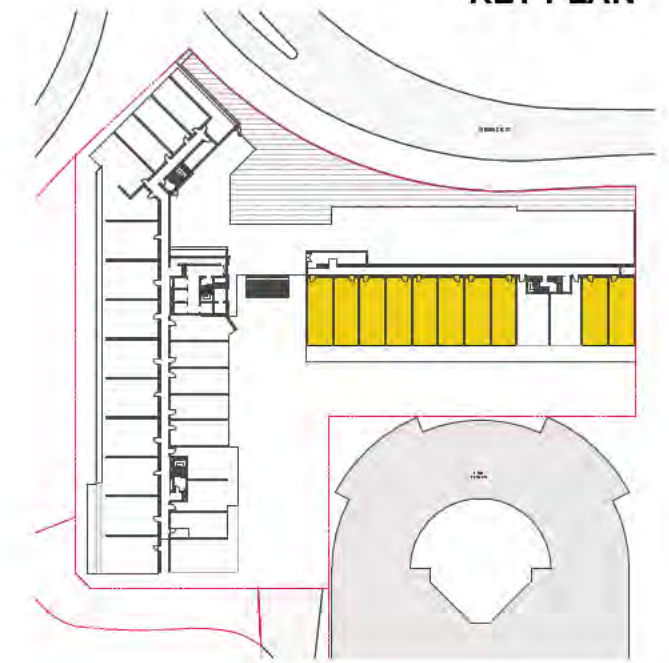


APARTMENT PLAN



SECTION PLAN

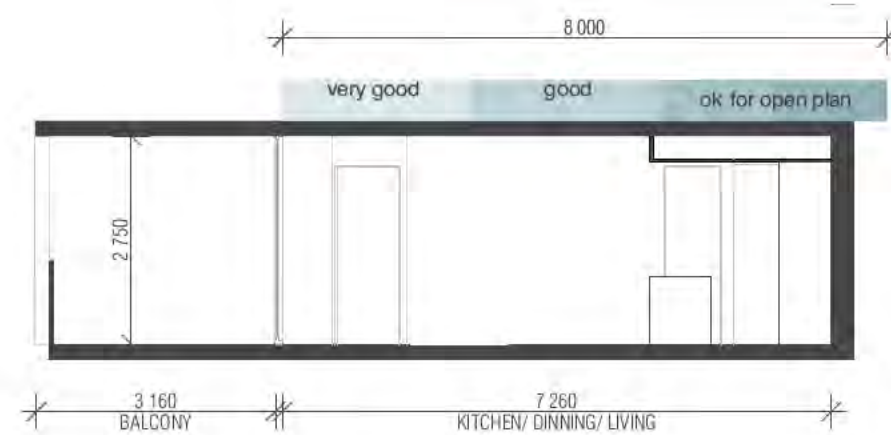
KEY PLAN



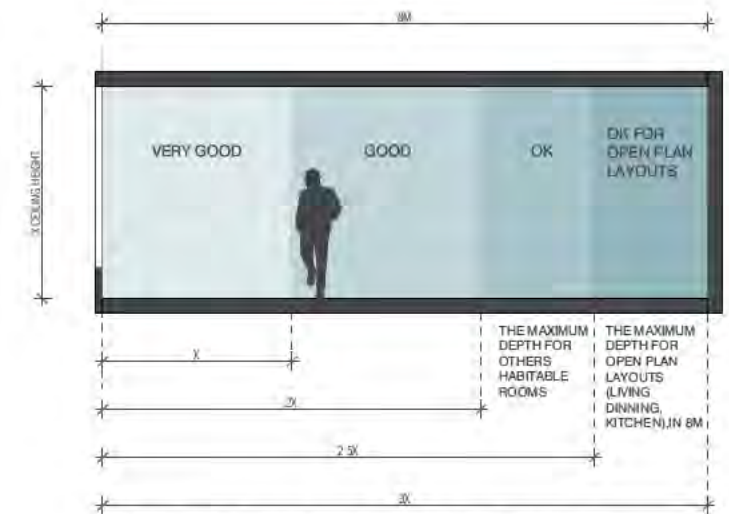
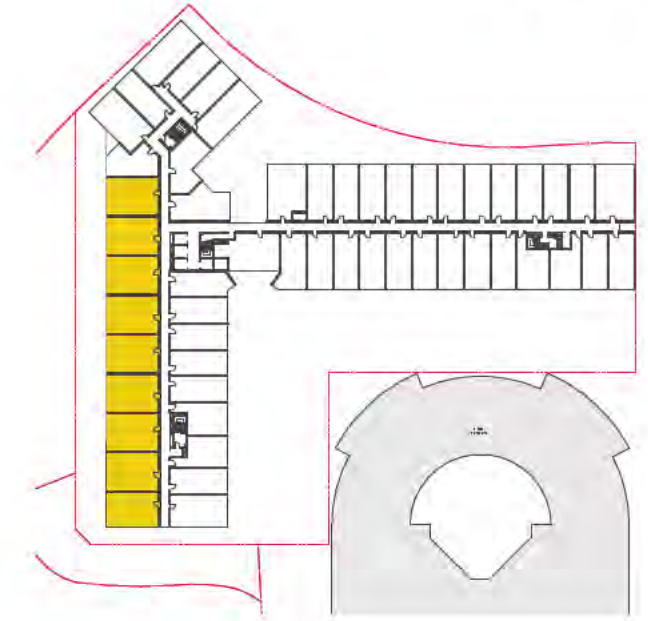
NOTE: THE DEPTH OF A SINGLE ASPECT APARTMENT RELATIVE TO THE CEILING HEIGHT DIRECTLY INFLUENCES THE QUALITY OF NATURAL VENTILATION AND DAYLIGHT ACCESS. THE MAXIMUM DEPTH OF OPEN PLAN LAYOUTS THAT COMBINE LIVING, DINNING AND KITCHEN SPACES IN 8M.



APARTMENT PLAN



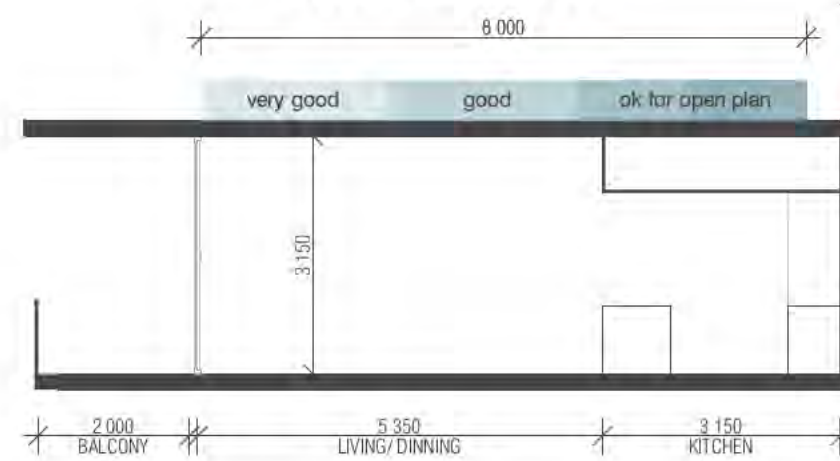
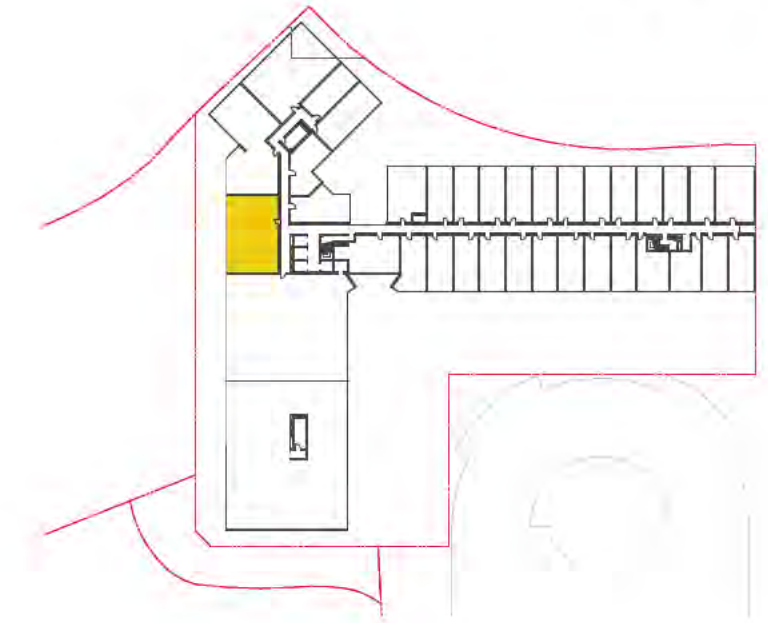
SECTION PLAN



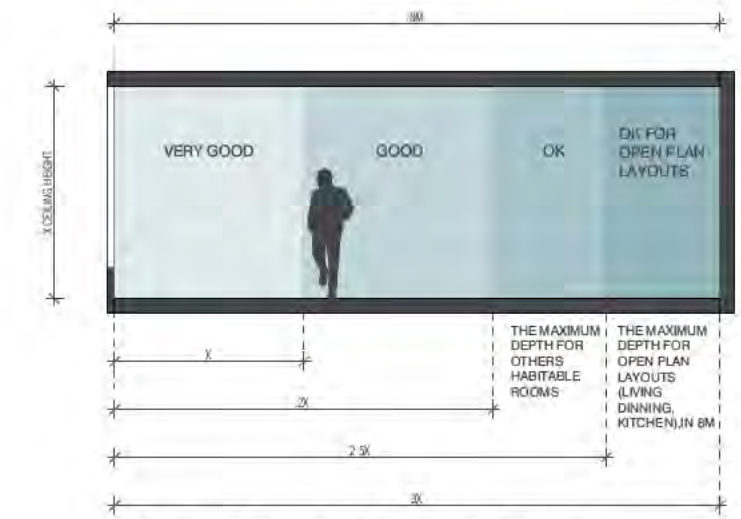
NOTE: THE DEPTH OF A SINGLE ASPECT APARTMENT RELATIVE TO THE CEILING HEIGHT DIRECTLY INFLUENCES THE QUALITY OF NATURAL VENTILATION AND DAYLIGHT ACCESS. THE MAXIMUM DEPTH OF OPEN PLAN LAYOUTS THAT COMBINE LIVING, DINNING AND KITCHEN SPACES IN 8M.



APARTMENT PLAN

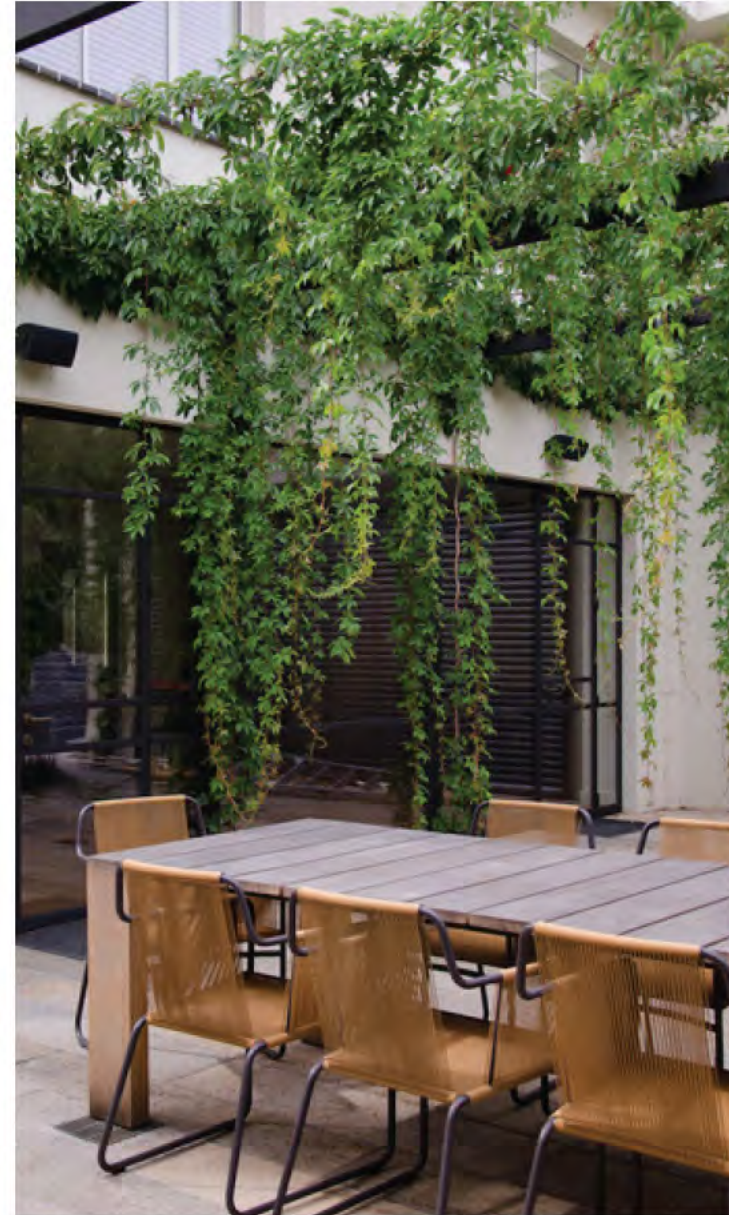


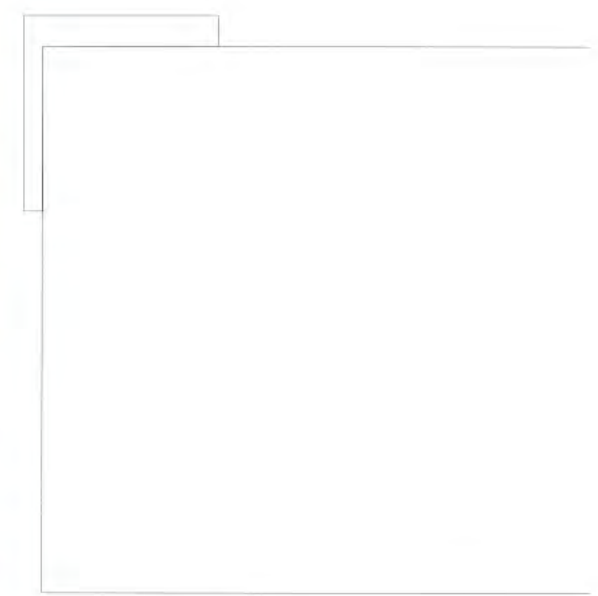
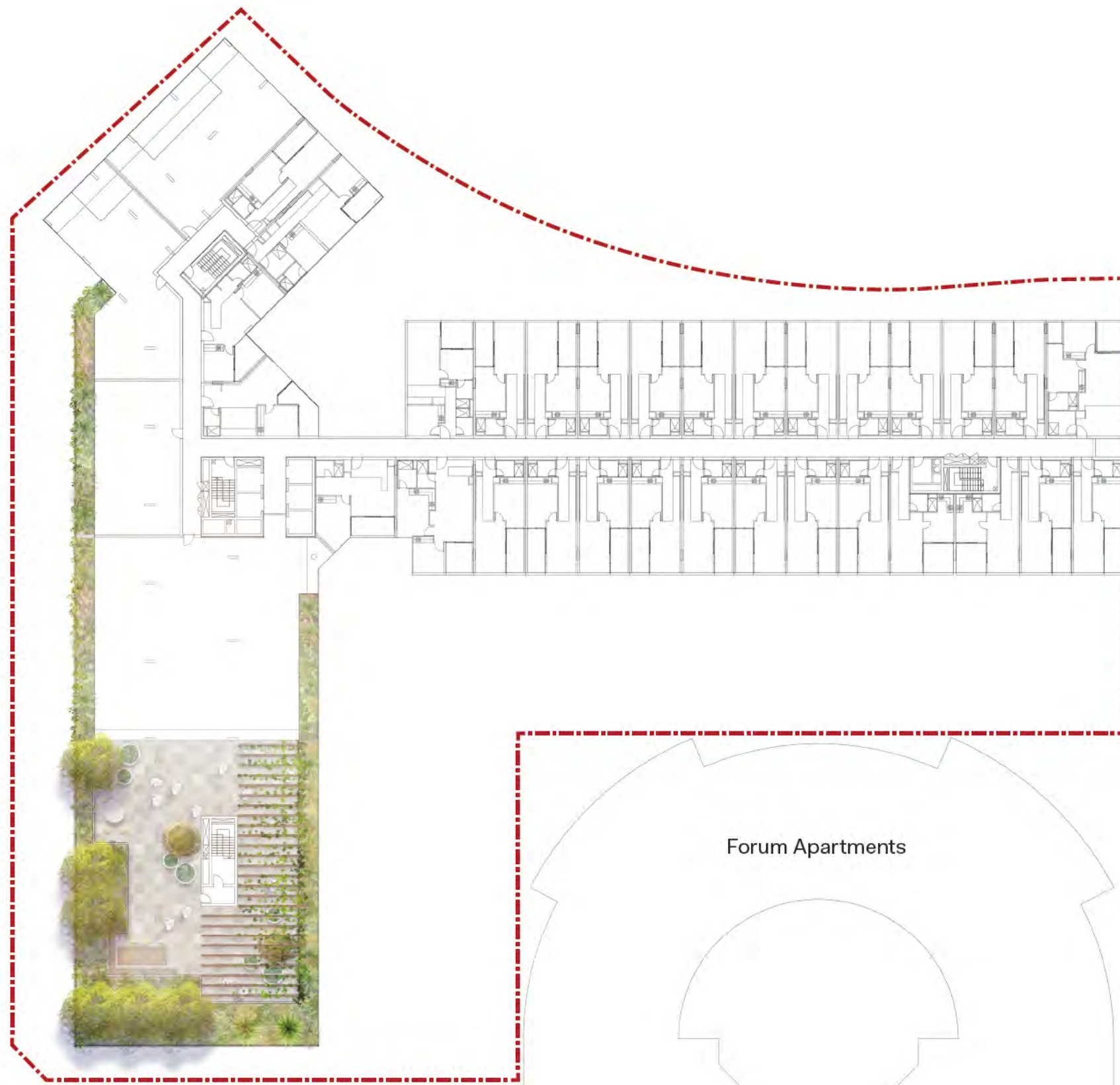
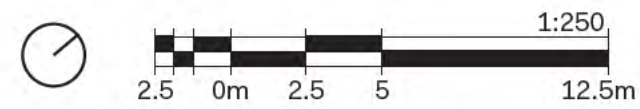
SECTION PLAN

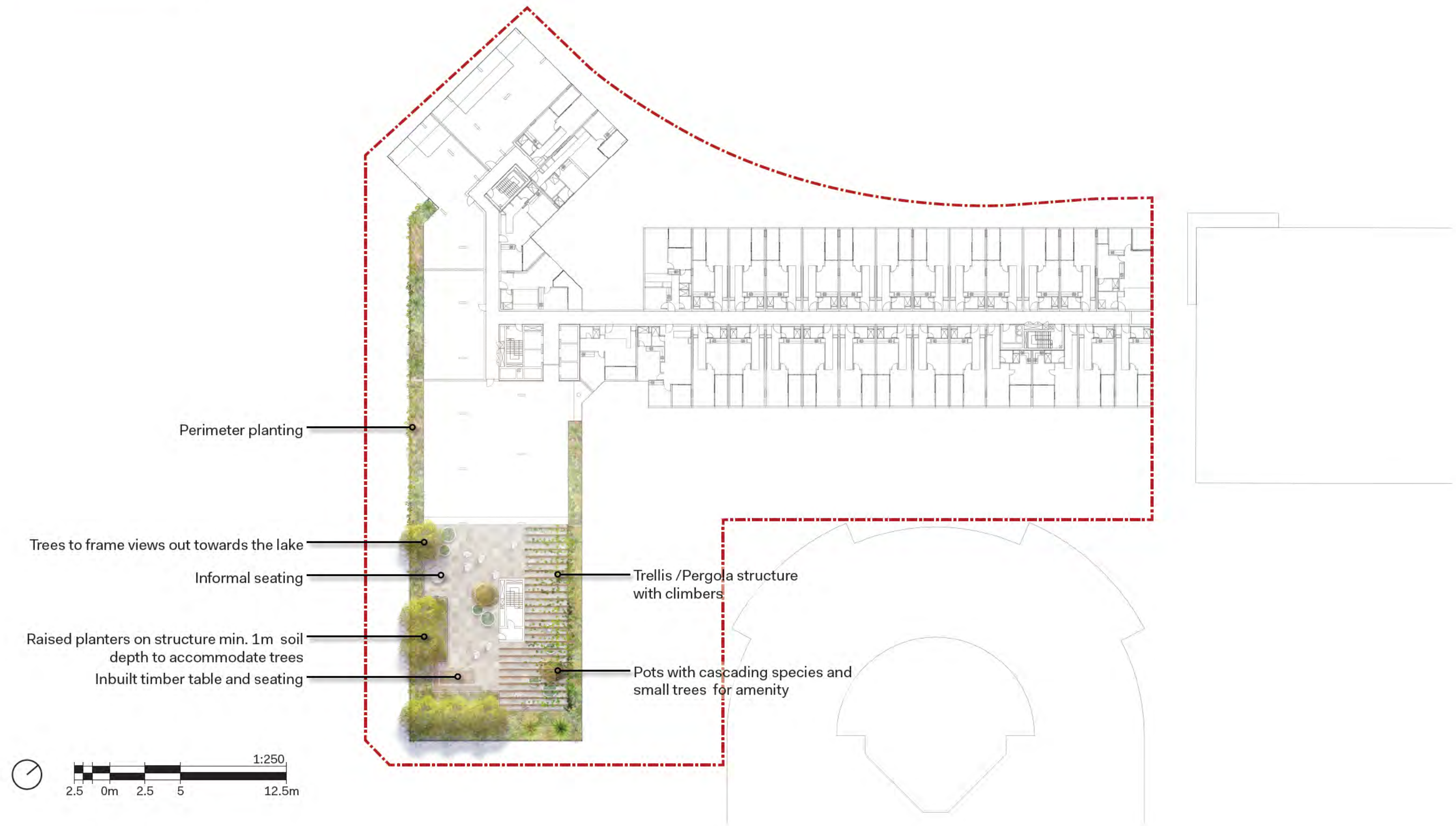


NOTE: THE DEPTH OF A SINGLE ASPECT APARTMENT RELATIVE TO THE CEILING HEIGHT DIRECTLY INFLUENCES THE QUALITY OF NATURAL VENTILATION AND DAYLIGHT ACCESS. THE MAXIMUM DEPTH OF OPEN PLAN LAYOUTS THAT COMBINE LIVING, DINNING AND KITCHEN SPACES IN 8M.

Landscape







Streetscapes







Project Name	70 Allara
Site	70 Allara St (Block 16 Section 10 City)
Session	Second session Wednesday, 13 July 2021

Please find the following images taken from 3D Canberra



Above: Aerial view looking west
Below: Aerial view looking north





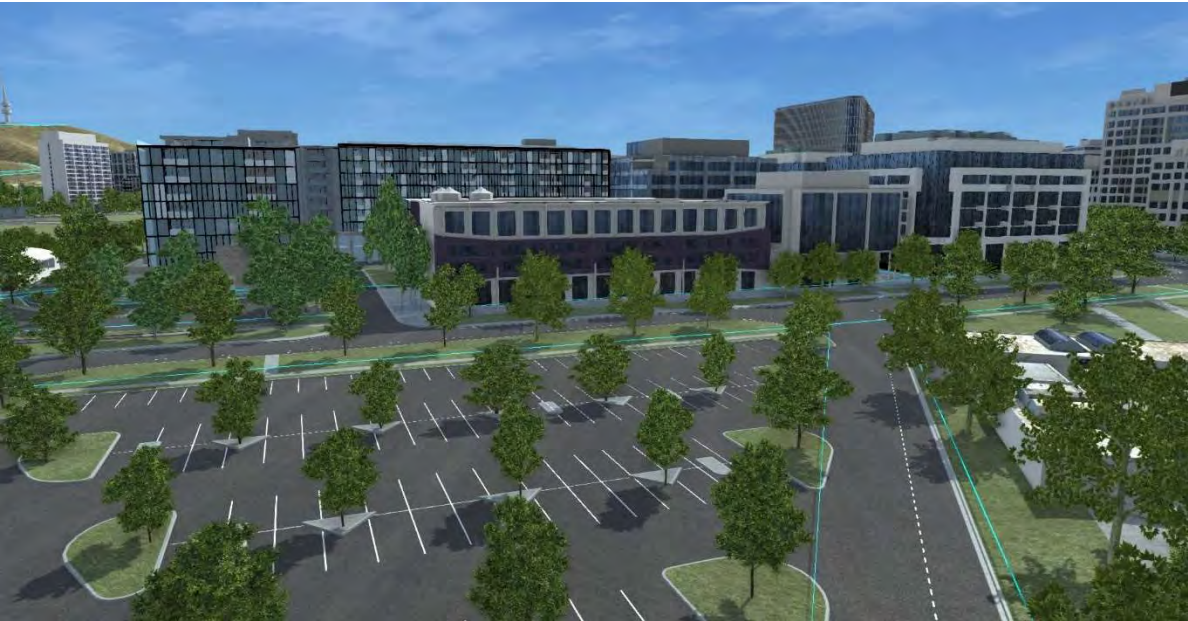
Above: Aerial view looking east
Below: View from London Circuit, looking south east towards commercial entry





Above: Street view looking north east from Parks Way

Below: Elevated view looking north from Civic Pool site

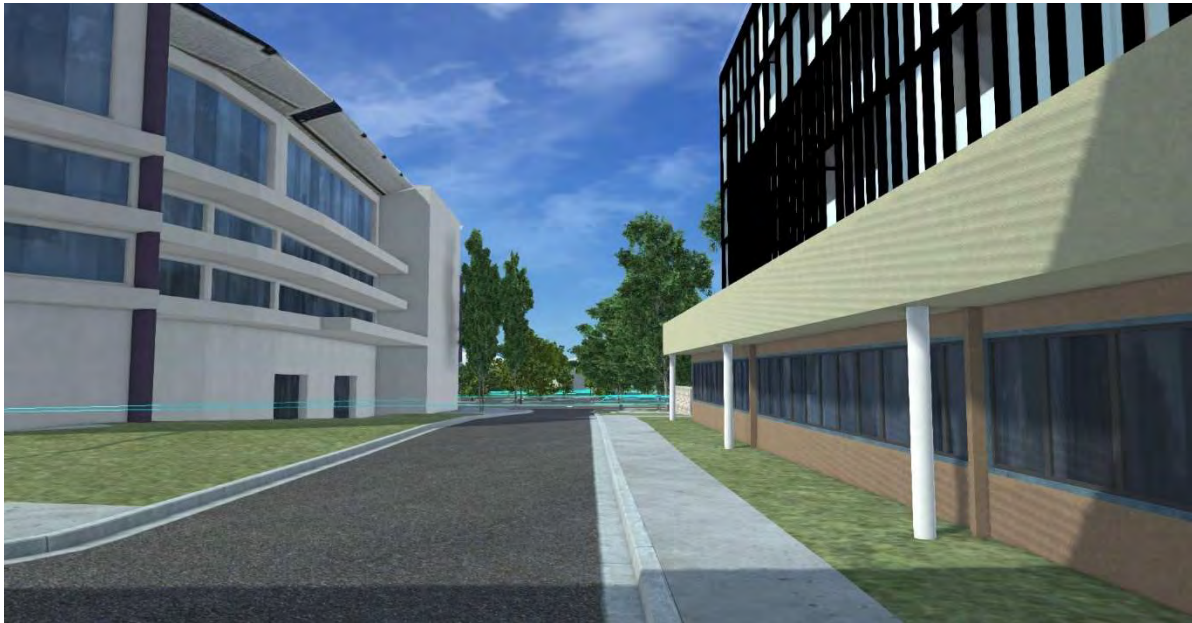




Above: Street view from London Circuit looking south

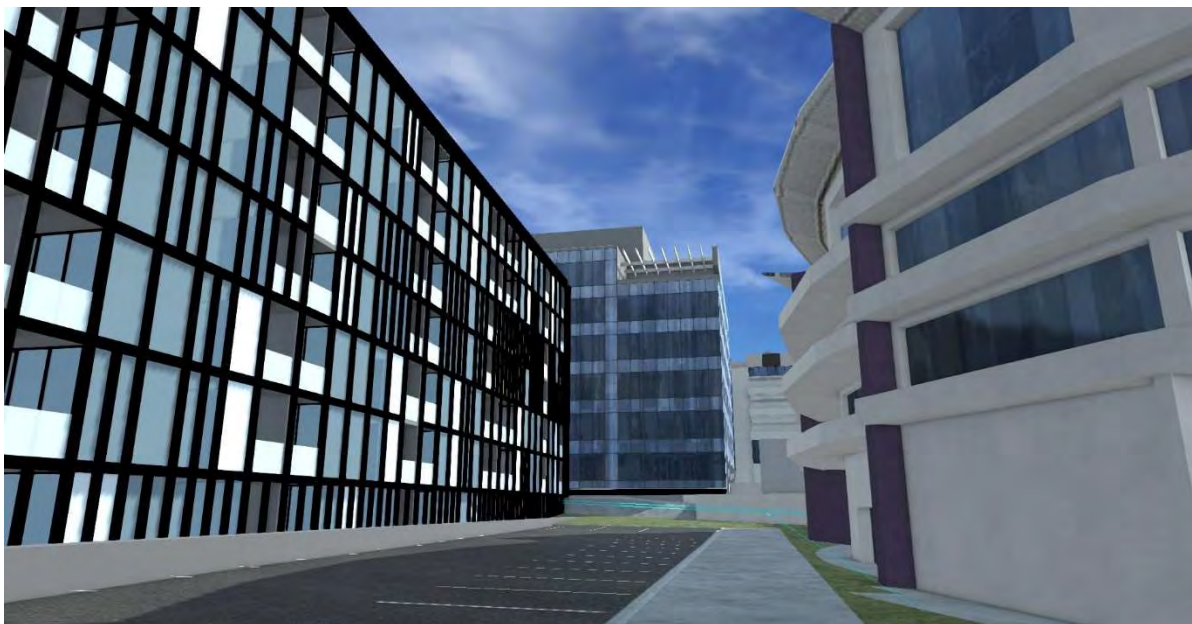
Below: Street view from Allara Street at site entry

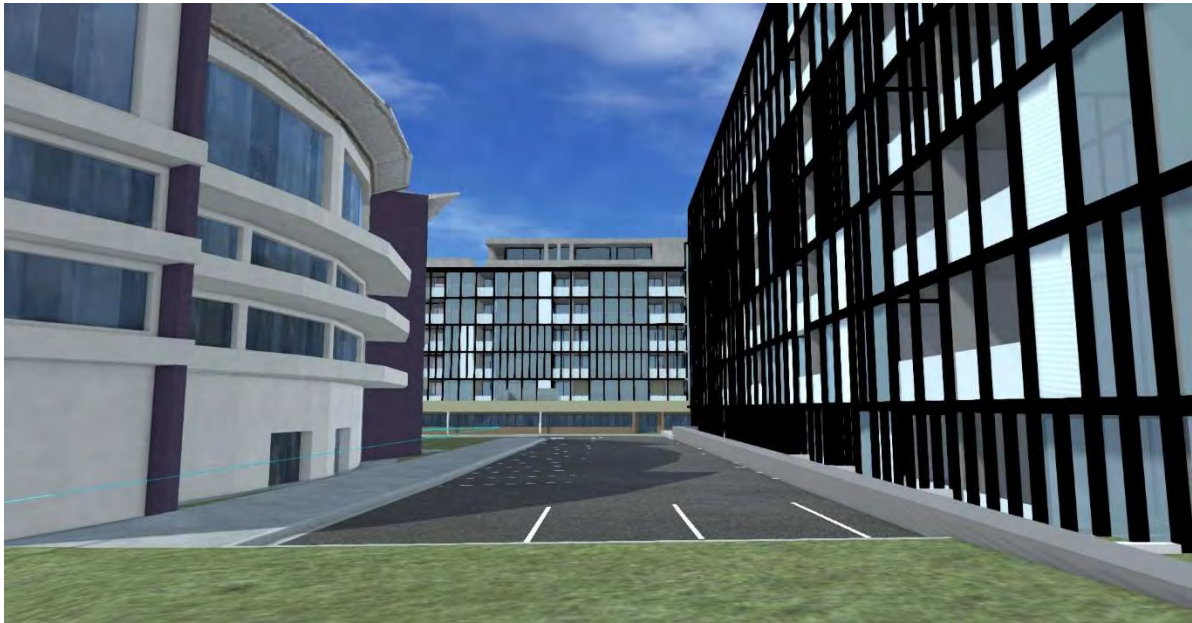




Above: Street view looking south west towards Allara Street

Below: Street view looking north east between the Forum apartments and the proposed development





Above: Street view looking south west between the Forum apartments and the proposed development

Welcome to this second session of the National Capital Design Review Panel to present the development proposal for **70 Allara** at Block 16 Section 10 City.

Acknowledgement of Country:

I wish to acknowledge the traditional custodians of the lands that we are each meeting on today, for those here in Canberra we acknowledge the Ngunnawal people and for those based elsewhere in Australia I also wish to acknowledge the traditional custodians of those lands.

I wish to pay my respects to Elders past, present and emerging; to acknowledge and respect their continuing culture and the contribution they make to the life of this city and this region. I would also like to acknowledge and welcome other Aboriginal and Torres Strait Islander people who may be attending today's event.

I encourage all present to remain cognisant of these historical, current and future connections between aboriginal Nations and their country as we discuss, design and interact with these lands through our professional endeavours.

My name is Catherine Townsend, I am the ACT Government Architect and will Chair this session.

The session will be Co-Chaired by [REDACTED]
[REDACTED] **the National Capital Authority.**

The panel for this presentation and any subsequent presentations for this proposal are:

[REDACTED]

We welcome:

The **applicant** for this proposal is – **GEOCON** represented by [REDACTED]

Their **Lead Consultant** presenting today is **Fender Katsalidis** represented by [REDACTED]

I also welcome proponent consultants from

- **Purdon Planning,** [REDACTED]
- **Oculus,** [REDACTED]

I also introduce key officers from

- **The National Capital Authority**
- **Environment, Planning and Sustainable Development Directorate (EPSDD)**
- **City Renewal Authority (CRA)**
- **Transport Canberra and City Services (TCCS)**

In preparation for this session the panel has **studied the documents provided** and have been **fully briefed on the planning context**.

The format for this session is in 4 main parts:

1. **Presentation by the design team** (20 minutes)
2. **Q and A session** (10 mins)
3. **Panel discussion and review** (20 minutes)
4. **Summary of key issues** (5 minutes)

The intention is that this is a discussion between peers and I encourage you to take the panel on the journey of the analysis, design options and concepts that has informed the proposal.

Housekeeping for Virtual Meetings:

1. For anyone attending the meeting as an observer, please mute your camera and microphone during today's session.

2. For all others please mute your microphone whilst you are not speaking.
 3. If you have a question but do not get the opportunity to ask, please note it down and I will round up any outstanding questions at the end.
 4. Please switch phones to silent and turn off any notification sounds on your computer, such as emails and reminders.
-

After today's session:

We will provide you with a written advice within 10 working days.

I will also ask that if you have any queries following the session or wish to discuss the advice you receive, please contact the Design Review Panel Secretariat directly and not the panel members or Chairs.

Queries to designreview@act.gov.au