

MOLONGLO / COOMBS & WRIGHT TREE ASSESSMENT

Tree N°:	1115
----------	------



Regulated Tree:	Y
Classification of Tree Quality:	
• Arboricultural Assessment	P
• Contribution to Urban Amenity	P
Recommendation:	Remove
Location	

Survey Details:

Organisation:	dsb Landscape Architects	Grid Co-ordinates:	E 202867.131	N 600201.993
Date of Survey:	4th November 2009	Assessor ID:	JL & ST	

Tree Details:

Species:	Eucalyptus viminalis			Common Name:	Ribbon gum		
Height:	10	Canopy spread:	7	Trunk Circum:	1700	N° of Trunks	1
Health/Condition:	Relative density of foliage						M
	Amount of dead wood in canopy						M
	Prevalence of insect attack or disease						M
	Prevalence of epicormic growth						M
	Prevalence of mistletoe						H
Overall health/condition of the tree						P	
Age:	A	Age/Health/Condition:	A/P	Form:	U	Hazard Potential:	M
Habitat Value:	N			Tolerance to Disturbance:	M		

Contribution to Future Urban Amenity:

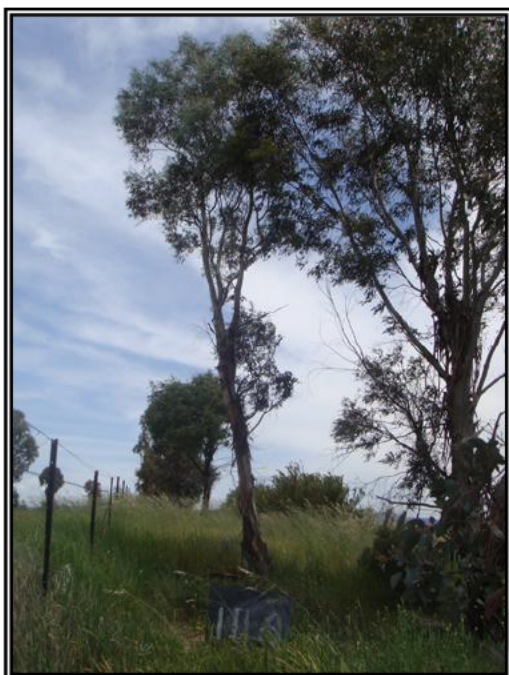
Scenic:	L	Rareness or Commonness:	M	Habitat quality:	M	Cultural, Social, Scientific:	L
Contribution to Immediate Landscaping:	L		Comment:	Unsuitable species for roadway area.			
Economic justification for retention or removal:							
Ameliorative work to reduce Risk:	N			Is work cost effective?:			
Landscape Groups:		Comment:					

Tree Protection and Management:

Tree Protection Zone & Conditions:	M	b, c & d always apply
Arboricultural Notes:		

MOLONGLO / COOMBS & WRIGHT TREE ASSESSMENT

Tree N^o: 1116



Regulated Tree:	N
Classification of Tree Quality:	
• Arboricultural Assessment	P
• Contribution to Urban Amenity	P
Recommendation:	Remove
Location	

Survey Details:

Organisation:	dsb Landscape Architects	Grid Co-ordinates:	E 202867.895	N 600198.275
Date of Survey:	4th November 2009	Assessor ID:	JL & ST	

Tree Details:

Species:	Eucalyptus rubida			Common Name:	Candle bark		
Height:	9	Canopy spread:	4	Trunk Circum:	800	N ^o of Trunks	1
Health/Condition:	Relative density of foliage						M
	Amount of dead wood in canopy						M
	Prevalence of insect attack or disease						H
	Prevalence of epicormic growth						M
	Prevalence of mistletoe						H
Overall health/condition of the tree						F	
Age:	A	Age/Health/Condition:	A/F	Form:	U	Hazard Potential:	M
Habitat Value:	N			Tolerance to Disturbance:	M		

Contribution to Future Urban Amenity:

Scenic:	L	Rareness or Commonness:	M	Habitat quality:	M	Cultural, Social, Scientific:	L
Contribution to Immediate Landscaping:	L		Comment:	Very poor form.			
Economic justification for retention or removal:							
Ameliorative work to reduce Risk:	Y			Is work cost effective?:	N		
Landscape Groups:	Comment:						

Tree Protection and Management:

Tree Protection Zone & Conditions:	M	b, c & d always apply
Arboricultural Notes:	Leaning.	

MOLONGLO / COOMBS & WRIGHT TREE ASSESSMENT

Tree N^o: 1117



Regulated Tree:	N
Classification of Tree Quality:	
• Arboricultural Assessment	P
• Contribution to Urban Amenity	P
Recommendation:	Remove
Location	

Survey Details:

Organisation:	dsb Landscape Architects	Grid Co-ordinates:	E 202861.746	N 600189.044
Date of Survey:	4th November 2009	Assessor ID:	JL & ST	

Tree Details:

Species:	Eucalyptus viminalis			Common Name:	Ribbon gum		
Height:	5	Canopy spread:	2	Trunk Circum:	600	N ^o of Trunks	1
Health/Condition:	Relative density of foliage						M
	Amount of dead wood in canopy						M
	Prevalence of insect attack or disease						L
	Prevalence of epicormic growth						H
	Prevalence of mistletoe						H
Overall health/condition of the tree						P	
Age:	A	Age/Health/Condition:	A/P	Form:	S	Hazard Potential:	M
Habitat Value:	N			Tolerance to Disturbance:	M		

Contribution to Future Urban Amenity:

Scenic:	L	Rareness or Commonness:	M	Habitat quality:	M	Cultural, Social, Scientific:	L
Contribution to Immediate Landscaping:		L	Comment: Very poor form.				
Economic justification for retention or removal:							
Ameliorative work to reduce Risk:			T	Is work cost effective?:			N
Landscape Groups:		Comment:					

Tree Protection and Management:

Tree Protection Zone & Conditions:	M	b, c & d always apply					
Arboricultural Notes:							

MOLONGLO / COOMBS & WRIGHT TREE ASSESSMENT

Tree N°:	1118
----------	------



Regulated Tree:	Y
Classification of Tree Quality:	
• Arboricultural Assessment	P
• Contribution to Urban Amenity	P
Recommendation:	Remove
Location	

Survey Details:

Organisation:	dsb Landscape Architects	Grid Co-ordinates:	E 202509.850	N 599824.056
Date of Survey:	30 th October 2009	Assessor ID:	JL & ST	

Tree Details:

Species:	Eucalyptus elata			Common Name:	River peppermint		
Height:	5	Canopy spread:	4	Trunk Circum:	2400	N° of Trunks	7
Health/Condition:	Relative density of foliage						M
	Amount of dead wood in canopy						M
	Prevalence of insect attack or disease						H
	Prevalence of epicormic growth						H
	Prevalence of mistletoe						H
Overall health/condition of the tree						F	
Age:	A	Age/Health/Condition:	A/F	Form:	U	Hazard Potential:	L
Habitat Value:	L			Tolerance to Disturbance:	M		

Contribution to Future Urban Amenity:

Scenic:	L	Rareness or Commonness:	M	Habitat quality:	M	Cultural, Social, Scientific:	L
Contribution to Immediate Landscaping:	L		Comment:	All coppice growth around a dead main trunk.			
Economic justification for retention or removal:							
Ameliorative work to reduce Risk:	Y			Is work cost effective?:	N		
Landscape Groups:	Comment:						

Tree Protection and Management:

Tree Protection Zone & Conditions:	M	b, c & d always apply
Arboricultural Notes:		

MOLONGLO / COOMBS & WRIGHT TREE ASSESSMENT

Tree N°: 1119



Regulated Tree:	Y
Classification of Tree Quality:	
• Arboricultural Assessment	P
• Contribution to Urban Amenity	P
Recommendation:	Remove
Location	

Survey Details:

Organisation:	dsb Landscape Architects	Grid Co-ordinates:	E 202502.377	N 599830.703
Date of Survey:	30 th October 2009	Assessor ID:	JL & ST	

Tree Details:

Species:	Eucalyptus elata			Common Name:	River peppermint		
Height:	6	Canopy spread:	4	Trunk Circum:	2500	N° of Trunks	7
Health/Condition:	Relative density of foliage						H
	Amount of dead wood in canopy						H
	Prevalence of insect attack or disease						H
	Prevalence of epicormic growth						H
	Prevalence of mistletoe						H
Overall health/condition of the tree						F	
Age:	A	Age/Health/Condition:	A/F	Form:	U	Hazard Potential:	L
Habitat Value:	N			Tolerance to Disturbance:	M		

Contribution to Future Urban Amenity:

Scenic:	L	Rareness or Commonness:	M	Habitat quality:	M	Cultural, Social, Scientific:	L	
Contribution to Immediate Landscaping:		L	Comment: All coppice growth.					
Economic justification for retention or removal:								
Ameliorative work to reduce Risk:			Y	Is work cost effective?:				N
Landscape Groups:		Comment:						

Tree Protection and Management:

Tree Protection Zone & Conditions:	M	b, c & d always apply
Arboricultural Notes:		

MOLONGLO / COOMBS & WRIGHT TREE ASSESSMENT

Tree N^o: 1120



Regulated Tree:	N
Classification of Tree Quality:	
• Arboricultural Assessment	P
• Contribution to Urban Amenity	P
Recommendation:	Remove
Location	

Survey Details:

Organisation:	dsb Landscape Architects	Grid Co-ordinates:	E 202493.320	N 599835.622
Date of Survey:	30 th October 2009	Assessor ID:	JL & ST	

Tree Details:

Species:	Eucalyptus elata			Common Name:	River peppermint		
Height:	6	Canopy spread:	3	Trunk Circum:	500	N ^o of Trunks	1
Health/Condition:	Relative density of foliage						L
	Amount of dead wood in canopy						L
	Prevalence of insect attack or disease						M
	Prevalence of epicormic growth						H
	Prevalence of mistletoe						H
Overall health/condition of the tree						P	
Age:	A	Age/Health/Condition:	A/P	Form:	U	Hazard Potential:	M
Habitat Value:	N			Tolerance to Disturbance:	M		

Contribution to Future Urban Amenity:

Scenic:	L	Rareness or Commonness:	M	Habitat quality:	M	Cultural, Social, Scientific:	L
Contribution to Immediate Landscaping:		Comment: Almost dead.					
Economic justification for retention or removal:							
Ameliorative work to reduce Risk:			Y	Is work cost effective?:			N
Landscape Groups:		Comment:					

Tree Protection and Management:

Tree Protection Zone & Conditions:	M	b, c & d always apply
Arboricultural Notes:		

MOLONGLO / COOMBS & WRIGHT TREE ASSESSMENT

Tree N°: 1121



Regulated Tree:	Y
Classification of Tree Quality:	
• Arboricultural Assessment	P
• Contribution to Urban Amenity	P
Recommendation:	Remove
Location	

Survey Details:

Organisation:	dsb Landscape Architects	Grid Co-ordinates:	E 202488.710	N 599838.191
Date of Survey:	30 th October 2009	Assessor ID:	JL & ST	

Tree Details:

Species:	Eucalyptus elata			Common Name:	River peppermint		
Height:	8	Canopy spread:	4	Trunk Circum:	2200	N° of Trunks	8
Health/Condition:	Relative density of foliage						H
	Amount of dead wood in canopy						H
	Prevalence of insect attack or disease						H
	Prevalence of epicormic growth						H
	Prevalence of mistletoe						H
Overall health/condition of the tree						F	
Age:	A	Age/Health/Condition:	A/F	Form:	U	Hazard Potential:	M
Habitat Value:	N			Tolerance to Disturbance:	M		

Contribution to Future Urban Amenity:

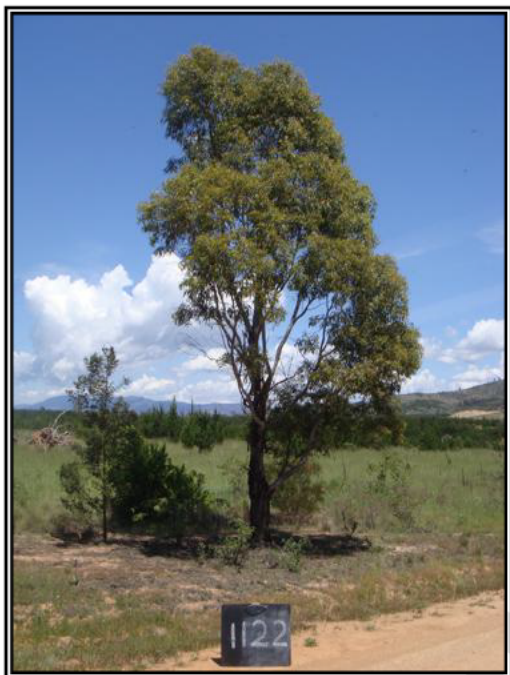
Scenic:	L	Rareness or Commonness:	M	Habitat quality:	M	Cultural, Social, Scientific:	L
Contribution to Immediate Landscaping:		L	Comment:				
Economic justification for retention or removal:							
Ameliorative work to reduce Risk:			Y	Is work cost effective?:			N
Landscape Groups:		Comment:					

Tree Protection and Management:

Tree Protection Zone & Conditions:	M	b, c & d always apply					
Arboricultural Notes:	Too much coppice growth.						

MOLONGLO / COOMBS & WRIGHT TREE ASSESSMENT

Tree N^o: 1122



Regulated Tree:	N
Classification of Tree Quality:	
• Arboricultural Assessment	M
• Contribution to Urban Amenity	M
Recommendation:	Retain
Location	

Survey Details:

Organisation:	dsb Landscape Architects	Grid Co-ordinates:	E 202471.975	N 599845.930
Date of Survey:	30 th October 2009	Assessor ID:	JL & ST	

Tree Details:

Species:	Eucalyptus elata			Common Name:	River peppermint		
Height:	9	Canopy spread:	5	Trunk Circum:	1300	N ^o of Trunks	1
Health/Condition:	Relative density of foliage						M
	Amount of dead wood in canopy						M
	Prevalence of insect attack or disease						H
	Prevalence of epicormic growth						H
	Prevalence of mistletoe						H
Overall health/condition of the tree						G	
Age:	A	Age/Health/Condition:	A/G	Form:	T	Hazard Potential:	L
Habitat Value:	N			Tolerance to Disturbance:	M		

Contribution to Future Urban Amenity:

Scenic:	M	Rareness or Commonness:	M	Habitat quality:	M	Cultural, Social, Scientific:	L
Contribution to Immediate Landscaping:		H	Comment:				
Economic justification for retention or removal:							
Ameliorative work to reduce Risk:			Y	Is work cost effective?:			Y
Landscape Groups:		Comment:					

Tree Protection and Management:

Tree Protection Zone & Conditions:	M	b, c & d always apply
Arboricultural Notes:	Remove four lower branches.	

MOLONGLO / COOMBS & WRIGHT TREE ASSESSMENT

Tree N°: 1123



Regulated Tree:	N
Classification of Tree Quality:	
• Arboricultural Assessment	H
• Contribution to Urban Amenity	M
Recommendation:	Retain
Location	

Survey Details:

Organisation:	dsb Landscape Architects	Grid Co-ordinates:	E 202446.337	N 599854.991
Date of Survey:	30 th October 2009	Assessor ID:	JL & ST	

Tree Details:

Species:	Eucalyptus rubida			Common Name:	Candle bark		
Height:	9.5	Canopy spread:	6	Trunk Circum:	1100	N° of Trunks	1
Health/Condition:	Relative density of foliage						H
	Amount of dead wood in canopy						H
	Prevalence of insect attack or disease						H
	Prevalence of epicormic growth						H
	Prevalence of mistletoe						H
	Overall health/condition of the tree						G
Age:	A	Age/Health/Condition:	A/G	Form:	T	Hazard Potential:	L
Habitat Value:	M			Tolerance to Disturbance:	M		

Contribution to Future Urban Amenity:

Scenic:	M	Rareness or Commonness:	M	Habitat quality:	M	Cultural, Social, Scientific:	L
Contribution to Immediate Landscaping:	H		Comment:				
Economic justification for retention or removal:							
Ameliorative work to reduce Risk:	Y			Is work cost effective?:	Y		
Landscape Groups:		Comment:					

Tree Protection and Management:

Tree Protection Zone & Conditions:	M	b, c & d always apply
Arboricultural Notes:	Remove second trunk at 1.5 metres.	

MOLONGLO / COOMBS & WRIGHT TREE ASSESSMENT

Tree N^o: 1124



Regulated Tree:	N
Classification of Tree Quality:	
• Arboricultural Assessment	H
• Contribution to Urban Amenity	M
Recommendation:	Retain
Location	

Survey Details:

Organisation:	dsb Landscape Architects	Grid Co-ordinates:	E 202439.555	N 599857.783
Date of Survey:	30 th October 2009	Assessor ID:	JL & ST	

Tree Details:

Species:	Eucalyptus mannifera			Common Name:	White brittle gum		
Height:	8.5	Canopy spread:	5	Trunk Circum:	800	N ^o of Trunks	1
Health/Condition:	Relative density of foliage						H
	Amount of dead wood in canopy						H
	Prevalence of insect attack or disease						H
	Prevalence of epicormic growth						H
	Prevalence of mistletoe						H
	Overall health/condition of the tree						G
Age:	A	Age/Health/Condition:	A/G	Form:	T	Hazard Potential:	L
Habitat Value:	N			Tolerance to Disturbance:	M		

Contribution to Future Urban Amenity:

Scenic:	M	Rareness or Commonness:	M	Habitat quality:	M	Cultural, Social, Scientific:	L
Contribution to Immediate Landscaping:		H	Comment: Well-formed young tree.				
Economic justification for retention or removal:							
Ameliorative work to reduce Risk:			N	Is work cost effective?:			
Landscape Groups:		Comment:					

Tree Protection and Management:

Tree Protection Zone & Conditions:	M	b, c & d always apply
Arboricultural Notes:		

MOLONGLO / COOMBS & WRIGHT TREE ASSESSMENT

Tree N^o: 1125



Regulated Tree:	N
Classification of Tree Quality:	
• Arboricultural Assessment	P
• Contribution to Urban Amenity	P
Recommendation:	Remove
Location	

Survey Details:

Organisation:	dsb Landscape Architects	Grid Co-ordinates:	E 202404.783	N 599862.798
Date of Survey:	30 th October 2009	Assessor ID:	JL & ST	

Tree Details:

Species:	Eucalyptus rubida			Common Name:	Candle bark		
Height:	9.5	Canopy spread:	6	Trunk Circum:	1100	N ^o of Trunks	2
Health/Condition:	Relative density of foliage						M
	Amount of dead wood in canopy						H
	Prevalence of insect attack or disease						H
	Prevalence of epicormic growth						H
	Prevalence of mistletoe						H
Overall health/condition of the tree						F	
Age:	A	Age/Health/Condition:	A/F	Form:	U	Hazard Potential:	M
Habitat Value:	N			Tolerance to Disturbance:	M		

Contribution to Future Urban Amenity:

Scenic:	L	Rareness or Commonness:	M	Habitat quality:	M	Cultural, Social, Scientific:	L
Contribution to Immediate Landscaping:	L	Comment:					
Economic justification for retention or removal:							
Ameliorative work to reduce Risk:	Y			Is work cost effective?:	N		
Landscape Groups:		Comment:					

Tree Protection and Management:

Tree Protection Zone & Conditions:	M	b, c & d always apply
Arboricultural Notes:	Removing one trunk will damage tree.	

MOLONGLO / COOMBS & WRIGHT TREE ASSESSMENT

Tree N^o: 1126



Regulated Tree:	N
Classification of Tree Quality:	
• Arboricultural Assessment	H
• Contribution to Urban Amenity	M
Recommendation:	Retain
Location	

Survey Details:

Organisation:	dsb Landscape Architects	Grid Co-ordinates:	E 202397.855	N 599863.771
Date of Survey:	30 th October 2009	Assessor ID:	JL & ST	

Tree Details:

Species:	Eucalyptus mannifera			Common Name:	White brittle gum		
Height:	5.5	Canopy spread:	5	Trunk Circum:	900	N ^o of Trunks	2
Health/Condition:	Relative density of foliage						M
	Amount of dead wood in canopy						H
	Prevalence of insect attack or disease						H
	Prevalence of epicormic growth						H
	Prevalence of mistletoe						H
Overall health/condition of the tree						G	
Age:	A	Age/Health/Condition:	A/G	Form:	T	Hazard Potential:	L
Habitat Value:	N			Tolerance to Disturbance:	M		

Contribution to Future Urban Amenity:

Scenic:	M	Rareness or Commonness:	M	Habitat quality:	M	Cultural, Social, Scientific:	L
Contribution to Immediate Landscaping:	H		Comment:				
Economic justification for retention or removal:							
Ameliorative work to reduce Risk:	Y		Is work cost effective?:	Y			
Landscape Groups:			Comment:				

Tree Protection and Management:

Tree Protection Zone & Conditions:	M	b, c & d always apply
Arboricultural Notes:	Remove second trunk.	

MOLONGLO / COOMBS & WRIGHT TREE ASSESSMENT

Tree N^o: 1127



Regulated Tree:	N
Classification of Tree Quality:	
• Arboricultural Assessment	M
• Contribution to Urban Amenity	M
Recommendation:	Retain
Location	

Survey Details:

Organisation:	dsb Landscape Architects	Grid Co-ordinates:	E 202384.917	N 599865.273
Date of Survey:	30 th October 2009	Assessor ID:	JL & ST	

Tree Details:

Species:	Eucalyptus mannifera			Common Name:	White brittle gum		
Height:	5	Canopy spread:	2	Trunk Circum:	600	N ^o of Trunks	1
Health/Condition:	Relative density of foliage						M
	Amount of dead wood in canopy						H
	Prevalence of insect attack or disease						H
	Prevalence of epicormic growth						H
	Prevalence of mistletoe						H
Overall health/condition of the tree						F	
Age:	A	Age/Health/Condition:	A/F	Form:	T	Hazard Potential:	L
Habitat Value:	N			Tolerance to Disturbance:	M		

Contribution to Future Urban Amenity:

Scenic:	M	Rareness or Commonness:	M	Habitat quality:	M	Cultural, Social, Scientific:	L
Contribution to Immediate Landscaping:	M		Comment:				
Economic justification for retention or removal:							
Ameliorative work to reduce Risk:	N		Is work cost effective?:				
Landscape Groups:			Comment:				

Tree Protection and Management:

Tree Protection Zone & Conditions:	M	b, c & d always apply
Arboricultural Notes:	Remove small branches at base.	

MOLONGLO / COOMBS & WRIGHT TREE ASSESSMENT

Tree N°: 1128



Regulated Tree:	N
Classification of Tree Quality:	
• Arboricultural Assessment	P
• Contribution to Urban Amenity	P
Recommendation:	Remove
Location	

Survey Details:

Organisation:	dsb Landscape Architects	Grid Co-ordinates:	E 202378.942	N 599865.658
Date of Survey:	30 th October 2009	Assessor ID:	JL & ST	

Tree Details:

Species:	Eucalyptus rubida			Common Name:	Candle bark		
Height:	11	Canopy spread:	6	Trunk Circum:	1100	N° of Trunks	1
Health/Condition:	Relative density of foliage						M
	Amount of dead wood in canopy						H
	Prevalence of insect attack or disease						H
	Prevalence of epicormic growth						H
	Prevalence of mistletoe						H
Overall health/condition of the tree						F	
Age:	A	Age/Health/Condition:	A/F	Form:	U	Hazard Potential:	S
Habitat Value:	N			Tolerance to Disturbance:	M		

Contribution to Future Urban Amenity:

Scenic:	L	Rareness or Commonness:	M	Habitat quality:	M	Cultural, Social, Scientific:	L
Contribution to Immediate Landscaping:		L	Comment:				
Economic justification for retention or removal:							
Ameliorative work to reduce Risk:			Y	Is work cost effective?:			N
Landscape Groups:		Comment:					

Tree Protection and Management:

Tree Protection Zone & Conditions:	M	b, c & d always apply
Arboricultural Notes:	Double leader at 3 metres, poor union.	

MOLONGLO / COOMBS & WRIGHT TREE ASSESSMENT

Tree N^o: 1129



Regulated Tree:	N
Classification of Tree Quality:	
• Arboricultural Assessment	H
• Contribution to Urban Amenity	M
Recommendation:	Retain
Location	

Survey Details:

Organisation:	dsb Landscape Architects	Grid Co-ordinates:	E 202375.828	N 599862.165
Date of Survey:	30 th October 2009	Assessor ID:	JL & ST	

Tree Details:

Species:	Eucalyptus mannifera			Common Name:	White brittle gum		
Height:	8	Canopy spread:	2	Trunk Circum:	600	N ^o of Trunks	1
Health/Condition:	Relative density of foliage						M
	Amount of dead wood in canopy						H
	Prevalence of insect attack or disease						H
	Prevalence of epicormic growth						H
	Prevalence of mistletoe						H
Overall health/condition of the tree						G	
Age:	A	Age/Health/Condition:	A/G	Form:	T	Hazard Potential:	L
Habitat Value:	N			Tolerance to Disturbance:	M		

Contribution to Future Urban Amenity:

Scenic:	M	Rareness or Commonness:	M	Habitat quality:	M	Cultural, Social, Scientific:	L
Contribution to Immediate Landscaping:		H	Comment: Well-formed young tree.				
Economic justification for retention or removal:							
Ameliorative work to reduce Risk:			N	Is work cost effective?:			
Landscape Groups:		Comment:					

Tree Protection and Management:

Tree Protection Zone & Conditions:	M	b, c & d always apply
Arboricultural Notes:		

MOLONGLO / COOMBS & WRIGHT TREE ASSESSMENT

Tree N°: 1131



Regulated Tree:	N
Classification of Tree Quality:	
• Arboricultural Assessment	P
• Contribution to Urban Amenity	P
Recommendation:	Remove
Location	

Survey Details:

Organisation:	dsb Landscape Architects	Grid Co-ordinates:	E 202366.827	N 599866.763
Date of Survey:	30 th October 2009	Assessor ID:	JL & ST	

Tree Details:

Species:	Eucalyptus rubida			Common Name:	Candle bark		
Height:	9	Canopy spread:	3	Trunk Circum:	1400	N° of Trunks	2
Health/Condition:	Relative density of foliage						H
	Amount of dead wood in canopy						H
	Prevalence of insect attack or disease						H
	Prevalence of epicormic growth						H
	Prevalence of mistletoe						H
Overall health/condition of the tree						F	
Age:	A	Age/Health/Condition:	A/F	Form:	P	Hazard Potential:	L
Habitat Value:	N			Tolerance to Disturbance:	M		

Contribution to Future Urban Amenity:

Scenic:	L	Rareness or Commonness:	M	Habitat quality:	M	Cultural, Social, Scientific:	L
Contribution to Immediate Landscaping:		L	Comment:				
Economic justification for retention or removal:							
Ameliorative work to reduce Risk:			Y	Is work cost effective?:			N
Landscape Groups:		Comment:					

Tree Protection and Management:

Tree Protection Zone & Conditions:	M	b, c & d always apply
Arboricultural Notes:	Two equal sized trunks, removing one trunk will damage tree.	

MOLONGLO / COOMBS & WRIGHT TREE ASSESSMENT

Tree N^o: 1132



Regulated Tree:	N
Classification of Tree Quality:	
• Arboricultural Assessment	H
• Contribution to Urban Amenity	M
Recommendation:	Retain
Location	

Survey Details:

Organisation:	dsb Landscape Architects	Grid Co-ordinates:	E 202360.181	N 599868.004
Date of Survey:	30 th October 2009	Assessor ID:	JL & ST	

Tree Details:

Species:	Eucalyptus mannifera			Common Name:	White brittle gum		
Height:	8	Canopy spread:	4	Trunk Circum:	900	N ^o of Trunks	1
Health/Condition:	Relative density of foliage						H
	Amount of dead wood in canopy						H
	Prevalence of insect attack or disease						H
	Prevalence of epicormic growth						H
	Prevalence of mistletoe						H
Overall health/condition of the tree						G	
Age:	A	Age/Health/Condition:	A/G	Form:	T	Hazard Potential:	L
Habitat Value:	N			Tolerance to Disturbance:	M		

Contribution to Future Urban Amenity:

Scenic:	M	Rareness or Commonness:	M	Habitat quality:	M	Cultural, Social, Scientific:	L
Contribution to Immediate Landscaping:	H		Comment:	Well-formed young tree.			
Economic justification for retention or removal:							
Ameliorative work to reduce Risk:	N			Is work cost effective?:			
Landscape Groups:		Comment:					

Tree Protection and Management:

Tree Protection Zone & Conditions:	M	b, c & d always apply
Arboricultural Notes:		

MOLONGLO / COOMBS & WRIGHT TREE ASSESSMENT

Tree N^o: 1133



Regulated Tree:	N
Classification of Tree Quality:	
• Arboricultural Assessment	H
• Contribution to Urban Amenity	M
Recommendation:	Retain
Location	

Survey Details:

Organisation:	dsb Landscape Architects	Grid Co-ordinates:	E 202354.316	N 599868.785
Date of Survey:	30 th October 2009	Assessor ID:	JL & ST	

Tree Details:

Species:	Eucalyptus rubida			Common Name:	Candle bark		
Height:	11	Canopy spread:	6	Trunk Circum:	1300	N ^o of Trunks	1
Health/Condition:	Relative density of foliage						H
	Amount of dead wood in canopy						H
	Prevalence of insect attack or disease						H
	Prevalence of epicormic growth						H
	Prevalence of mistletoe						H
	Overall health/condition of the tree						G
Age:	A	Age/Health/Condition:	A/G	Form:	T	Hazard Potential:	L
Habitat Value:	N			Tolerance to Disturbance:	M		

Contribution to Future Urban Amenity:

Scenic:	M	Rareness or Commonness:	M	Habitat quality:	M	Cultural, Social, Scientific:	L
Contribution to Immediate Landscaping:	H		Comment:	Well-formed tree.			
Economic justification for retention or removal:							
Ameliorative work to reduce Risk:	N		Is work cost effective?:				
Landscape Groups:		Comment:					

Tree Protection and Management:

Tree Protection Zone & Conditions:	M	b, c & d always apply
Arboricultural Notes:		

MOLONGLO / COOMBS & WRIGHT TREE ASSESSMENT

Tree N°: 1134



Regulated Tree:	N
Classification of Tree Quality:	
• Arboricultural Assessment	P
• Contribution to Urban Amenity	P
Recommendation:	Remove
Location	

Survey Details:

Organisation:	dsb Landscape Architects	Grid Co-ordinates:	E 202348.369	N 599869.376
Date of Survey:	30 th October 2009	Assessor ID:	JL & ST	

Tree Details:

Species:	Eucalyptus mannifera			Common Name:	White brittle gum		
Height:	5	Canopy spread:	3	Trunk Circum:	900	N° of Trunks	5
Health/Condition:	Relative density of foliage						H
	Amount of dead wood in canopy						H
	Prevalence of insect attack or disease						H
	Prevalence of epicormic growth						H
	Prevalence of mistletoe						H
Overall health/condition of the tree						F	
Age:	J	Age/Health/Condition:	J/F	Form:	P	Hazard Potential:	L
Habitat Value:	N			Tolerance to Disturbance:	M		

Contribution to Future Urban Amenity:

Scenic:	L	Rareness or Commonness:	M	Habitat quality:	M	Cultural, Social, Scientific:	L
Contribution to Immediate Landscaping:	L	Comment:					
Economic justification for retention or removal:							
Ameliorative work to reduce Risk:	Y			Is work cost effective?:	N		
Landscape Groups:		Comment:					

Tree Protection and Management:

Tree Protection Zone & Conditions:	M	b, c & d always apply
Arboricultural Notes:	Coppice growth.	

MOLONGLO / COOMBS & WRIGHT TREE ASSESSMENT

Tree N°: 1135



Regulated Tree:	N
Classification of Tree Quality:	
• Arboricultural Assessment	H
• Contribution to Urban Amenity	M
Recommendation:	Retain
Location	

Survey Details:

Organisation:	dsb Landscape Architects	Grid Co-ordinates:	E 202330.812	N 599871.190
Date of Survey:	30 th October 2009	Assessor ID:	JL & ST	

Tree Details:

Species:	Eucalyptus rubida			Common Name:	Candle bark		
Height:	7	Canopy spread:	4	Trunk Circum:	1100	N° of Trunks	3
Health/Condition:	Relative density of foliage						H
	Amount of dead wood in canopy						H
	Prevalence of insect attack or disease						H
	Prevalence of epicormic growth						H
	Prevalence of mistletoe						H
	Overall health/condition of the tree						G
Age:	A	Age/Health/Condition:	A/G	Form:	T	Hazard Potential:	L
Habitat Value:	N			Tolerance to Disturbance:	M		

Contribution to Future Urban Amenity:

Scenic:	M	Rareness or Commonness:	M	Habitat quality:	N	Cultural, Social, Scientific:	L
Contribution to Immediate Landscaping:	H		Comment:				
Economic justification for retention or removal:							
Ameliorative work to reduce Risk:	N		Is work cost effective?:				
Landscape Groups:			Comment:				

Tree Protection and Management:

Tree Protection Zone & Conditions:	M	b, c & d always apply
Arboricultural Notes:	Remove 2 small trunks, minor lean.	