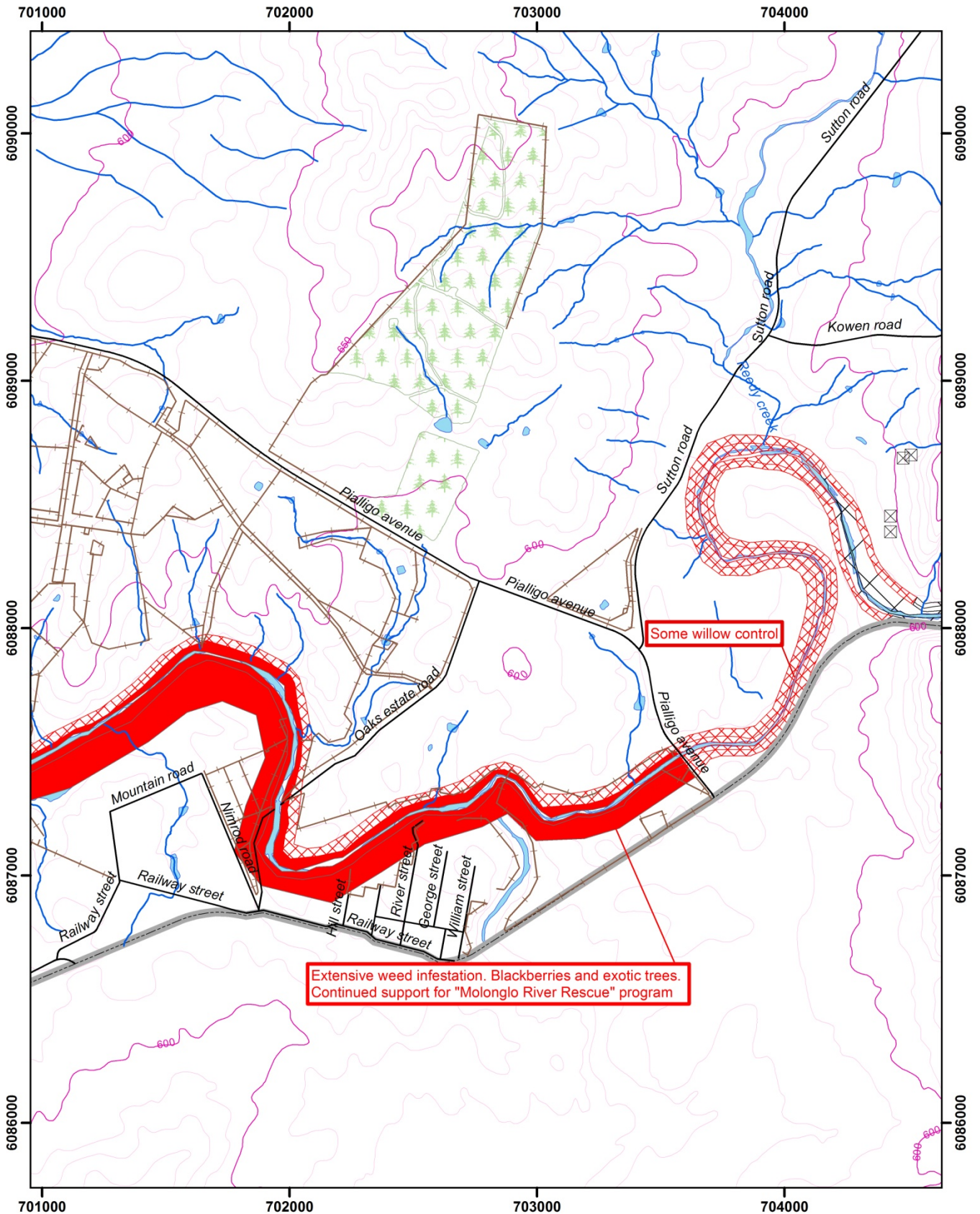
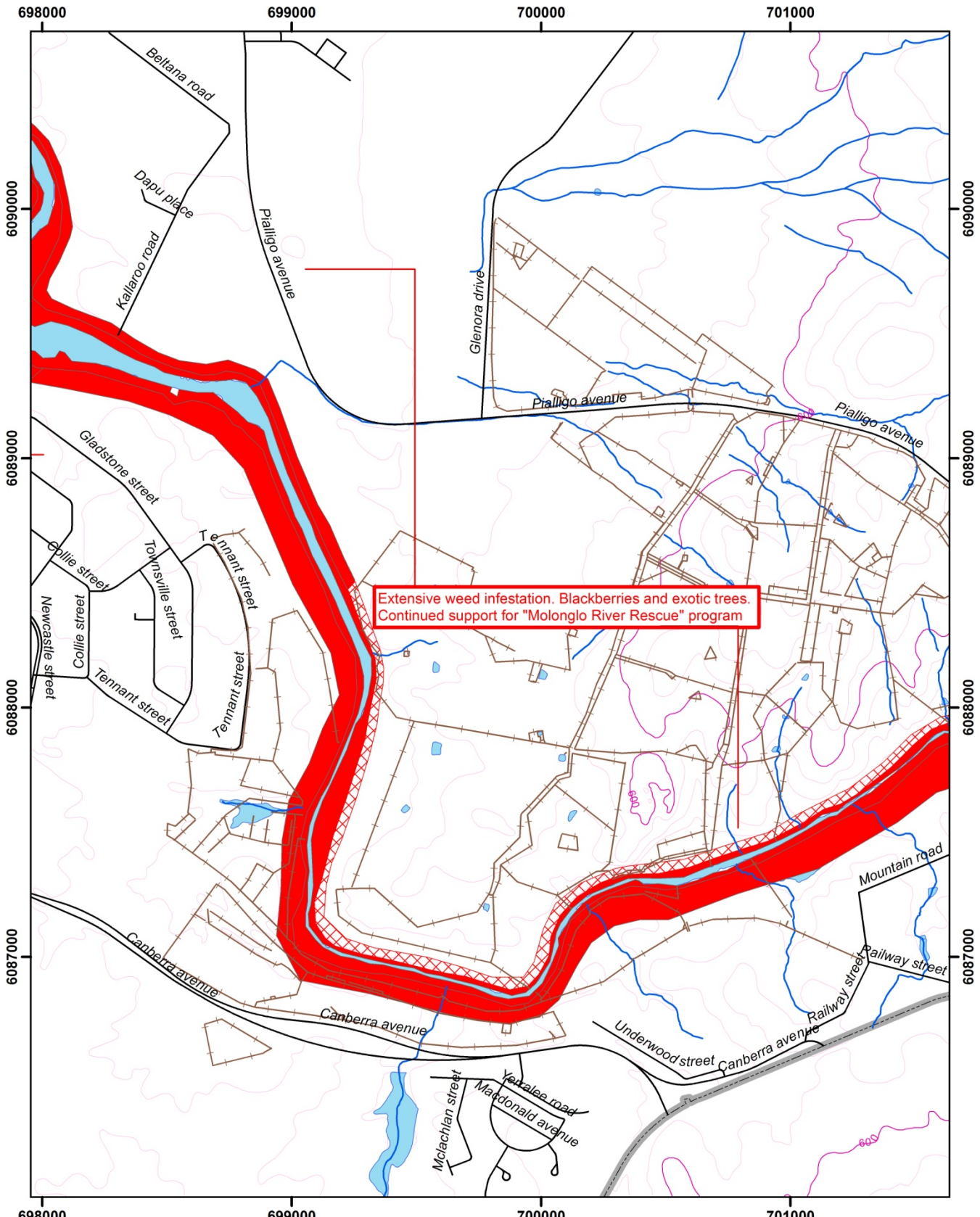


<p>Appendix 7  <b>Molonglo River</b>  <b>Vegetation Management</b>  <b>Priority Sites</b>          Map Number 7.2c          1:20,000          0 125 250 500 Meters</p>		<p><b>Contours</b></p> <ul style="list-style-type: none"> <li>10m intervals</li> <li>50m intervals</li> </ul>		<p><b>Vegetation Management</b></p> <ul style="list-style-type: none"> <li>No action required</li> <li>High Priority</li> <li>Very High Priority</li> </ul>			<p>Contact Details Date: 10th August 2009          ACT Government          Conservation, Planning and Research          Gungahlin Homestead,          Barton Highway,          PO Box 158 Canberra ACT 2601          Telephone: 13 22 81          Disclaimer: ACT Government does          not warrant that the data is free from errors.          Data Copyright: © Australian Capital Territory,          Canberra 2009.</p>
<p>Gates          Fences          Roads          River          ACT Border          Pine Forest</p>		<p><b>Legend</b></p> <ul style="list-style-type: none"> <li>Gates</li> <li>Fences</li> <li>Roads</li> <li>River</li> <li>ACT Border</li> <li>Pine Forest</li> </ul>					



<p>Appendix 7  <b>Molonglo River</b>  <b>Vegetation Management</b>  <b>Priority Sites</b>          Map Number 7.3c          1:20,000          0 125 250 500          Meters</p>		<p>  N   Gates   Fences   Roads   River   ACT Border   Pine Forest         </p>		<p><b>Contours</b></p> <p>  10m intervals   50m intervals         </p>		<p><b>Vegetation Management</b></p> <p>  No action required   High Priority   Very High Priority         </p>			<p>Contact Details Date: 10th August, 2009          ACT Government          Conservation, Planning and Research          Gungahlin Homestead,          Barton Highway,          PO Box 156 Canberra ACT 2601          Telephone: 13 22 81          Disclaimer: ACT Government does          not warrant that the data is free from errors.          Data Copyright: © Australian Capital Territory,          Canberra 2009.</p>
---	--	---	--	--	--	---	--	--	---



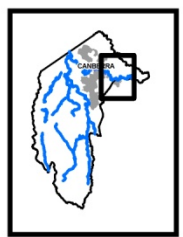
Extensive weed infestation. Blackberries and exotic trees.  
Continued support for "Molonglo River Rescue" program

Appendix 7  
**Molonglo River**  
**Vegetation Management**  
**Priority Sites**  
 Map Number 7.4c  
 1:20,000  
 0 125 250 500  
 Meters

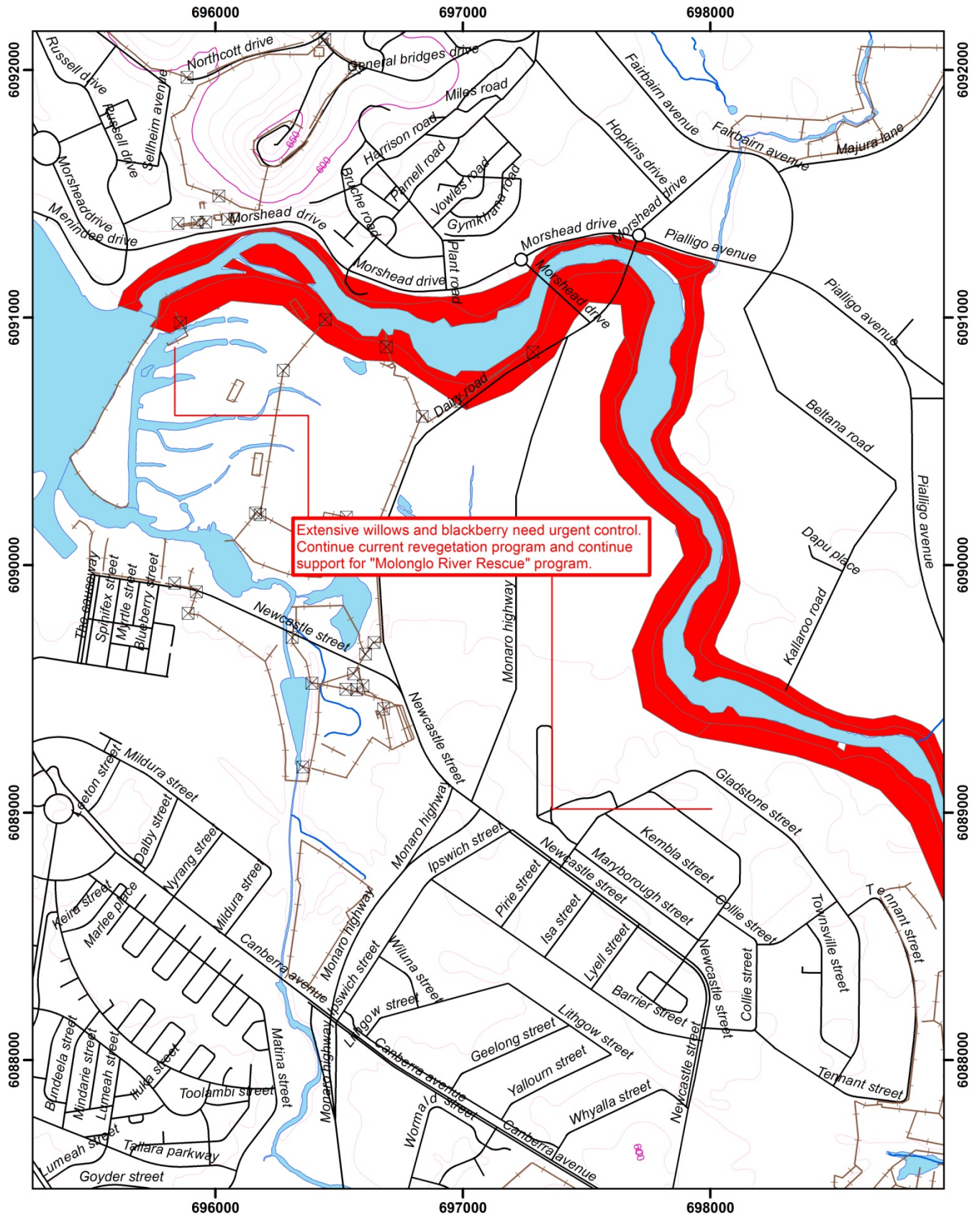
- Gates
- Fences
- Roads
- River
- ACT Border
- Pine Forest

- Contours**
- 10m intervals
  - 50m intervals

- Vegetation Management**
- No action required
  - High Priority
  - Very High Priority

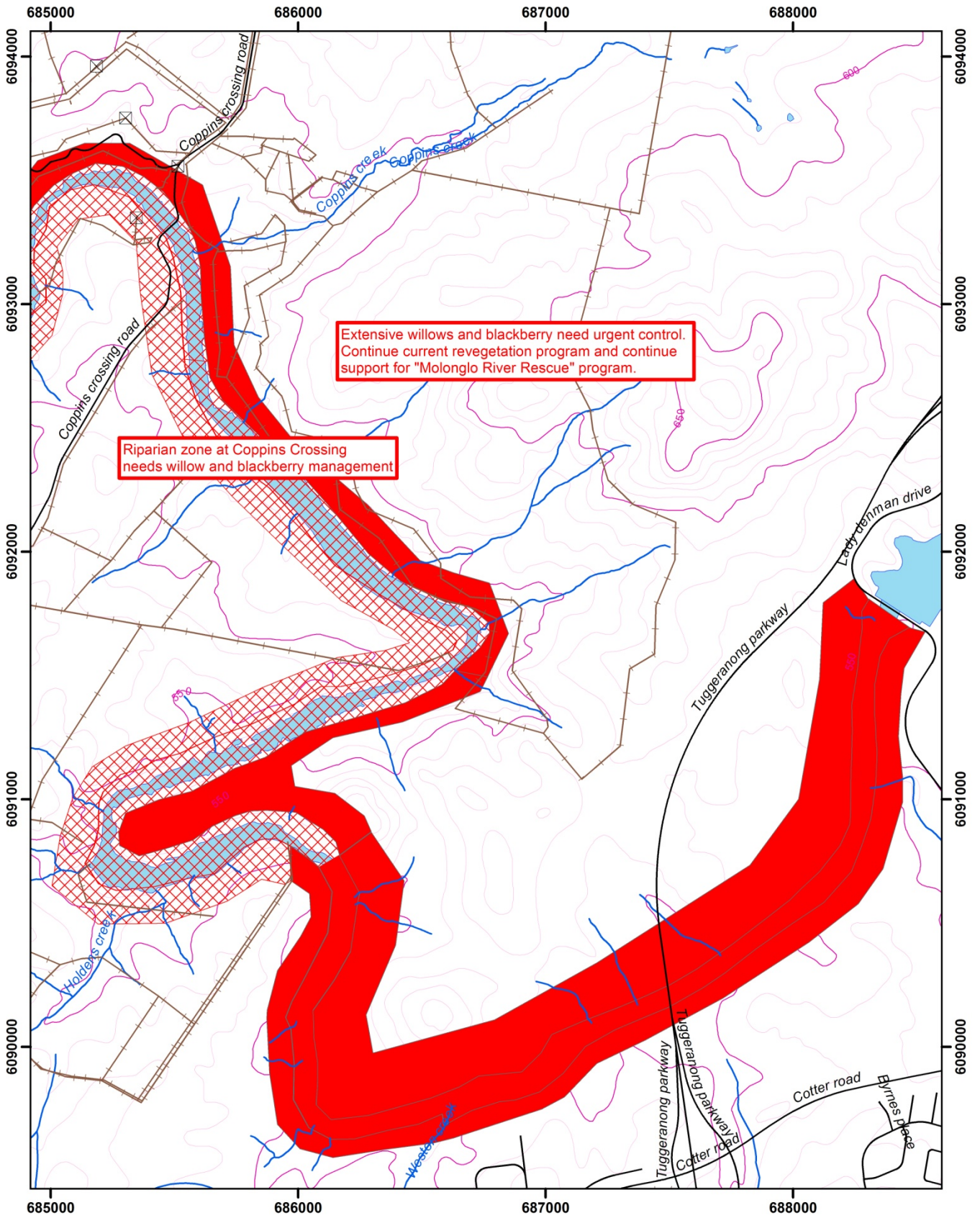


Contact Details Date: 10th August, 2009  
 ACT Government  
 Conservation, Planning and Research  
 Gungahlin Homestead,  
 Barton Highway,  
 PO Box 154 Canberra ACT 2601  
 Telephone: 13 22 81  
 Disclaimer: ACT Government does  
 not warrant that the data is free from errors.  
 Data Copyright: © Australian Capital Territory,  
 Canberra 2009.

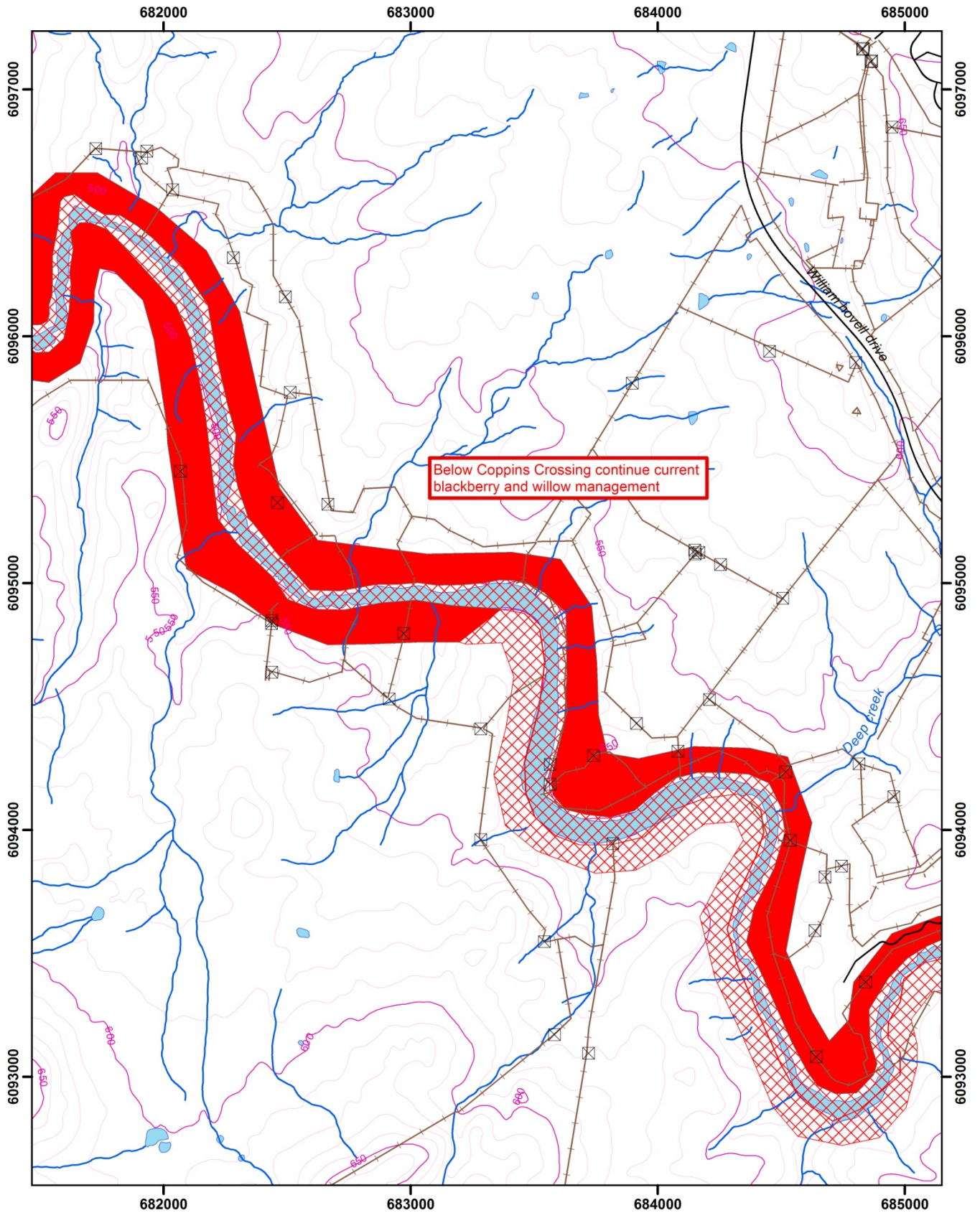


Extensive willows and blackberry need urgent control. Continue current revegetation program and continue support for "Molonglo River Rescue" program.

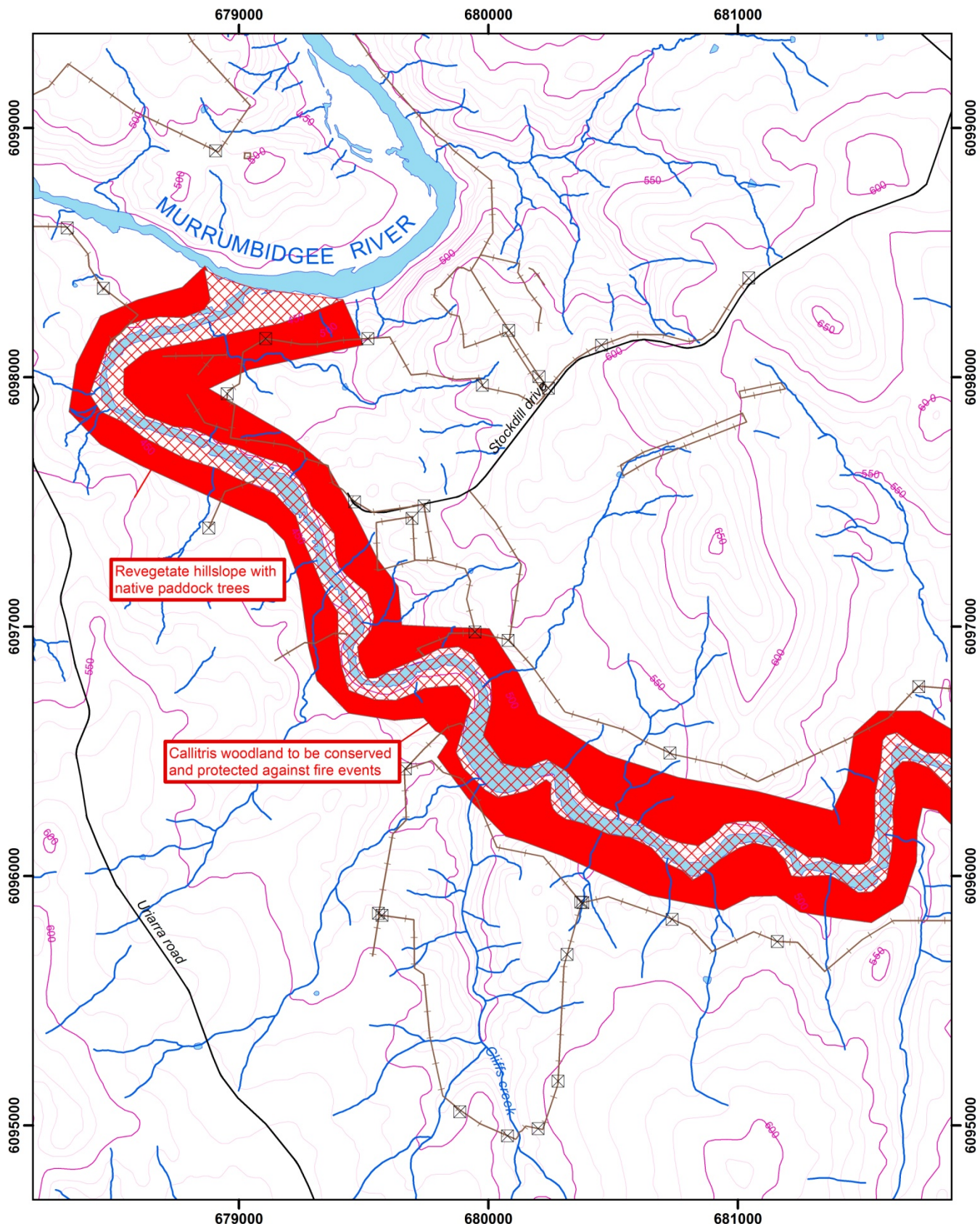
<p>Appendix 7 <b>Molonglo River</b> <b>Vegetation Management</b> <b>Priority Sites</b> Map Number 7.5c 1:20,000 0 125 250 500 Meters</p>		<p>  Gates   Fences   Roads   River   ACT Border   Pine Forest         </p>	<p><b>Contours</b></p> <p>  10m intervals   50m intervals         </p>	<p><b>Vegetation Management</b></p> <p>  No action required   High Priority   Very High Priority         </p>		<p> <small>Contact Details Date: 10th August 2009</small>  <small>ACT Government</small>  <small>Conservation, Planning and Research</small>  <small>Gungahlin Homestead,</small>  <small>Barton Highway,</small>  <small>PO Box 158 Canberra ACT 2601</small>  <small>Telephone: 13 22 81</small>  <small>Disclaimer: ACT Government does</small>  <small>not warrant that the data is free from errors.</small>  <small>Data Copyright © Australian Capital Territory,</small>  <small>Canberra 2009.</small> </p>
--	--	---	--	---	--	--



<p>Appendix 7 <b>Molonglo River</b> <b>Vegetation Management</b> <b>Priority Sites</b> Map Number 7.6c 1:20,000 0 125 250 500 Meters</p>		<p>  Gates   Fences   Roads   River   ACT Border   Pine Forest         </p>	<p><b>Contours</b></p> <p>  10m intervals   50m intervals         </p>	<p><b>Vegetation Management</b></p> <p>  No action required   High Priority   Very High Priority         </p>		<p> <small>Contact Details Date: 10th August, 2009            ACT Government            Conservation, Planning and Research            Gungahlin Homestead,            Barton Highway,            PO Box 158 Canberra ACT 2601            Telephone: 13 22 81            Disclaimer: ACT Government does            not warrant that the data is free from errors.            Data Copyright: © Australian Capital Territory,            Canberra 2009.</small> </p>
--	--	---	--	---	--	--



<p>Appendix 7 <b>Molonglo River</b> <b>Vegetation Management</b> <b>Priority Sites</b> Map Number 7.7c 1:20,000 0 125 250 500 Meters</p>		<p>  Gates   Fences   Roads   River   ACT Border   Pine Forest         </p>	<p><b>Contours</b></p> <p>  10m intervals   50m intervals         </p>	<p><b>Vegetation Management</b></p> <p>  No action required   High Priority   Very High Priority         </p>		<p> <small>Contact Details Date: 10th August 2009</small>  <small>ACT Government Conservation, Planning and Research</small>  <small>Gungahlin Homestead,</small>  <small>Barton Highway,</small>  <small>PO Box 158 Canberra ACT 2601</small>  <small>Telephone: 13 22 81</small>  <small>Disclaimer: ACT Government does not warrant that the data is free from errors.</small>  <small>Data Copyright: © Australian Capital Territory, Canberra 2009.</small> </p>
--	--	---	--	---	--	---



<p>Appendix 7  <b>Molonglo River</b>  <b>Vegetation Management</b>  <b>Priority Sites</b>          Map Number 7.8c          1:20,000          0 125 250 500          Meters</p>		<p>  N   Gates   Fences   Roads   River   ACT Border   Pine Forest         </p>	<p><b>Contours</b></p> <ul style="list-style-type: none"> <li>10m intervals</li> <li>50m intervals</li> </ul>	<p><b>Vegetation Management</b></p> <ul style="list-style-type: none"> <li>No action required</li> <li>High Priority</li> <li>Very High Priority</li> </ul>		<p> <small>Contact Details</small>    Date: 10th August, 2009            ACT Government            Conservation, Planning and Research            Gungahlin Homestead,            Barton Highway            PO Box 108 Canberra ACT 2601            Telephone: 13 22 81            Disclaimer: ACT Government does            not warrant that the data is free from errors.            Data Copyright: © Australian Capital Territory,            Canberra 2009         </p>
---	--	---	---	---	--	---