

MOLONGLO / COOMBS & WRIGHT TREE ASSESSMENT

Tree N^o: 1096



Regulated Tree:	N
Classification of Tree Quality:	
• Arboricultural Assessment	M
• Contribution to Urban Amenity	M
Recommendation:	Retain
Location	

Survey Details:

Organisation:	dsb Landscape Architects	Grid Co-ordinates:	E 202983.568	N 600374.189
Date of Survey:	4 th November 2009	Assessor ID:	JL & ST	

Tree Details:

Species:	Eucalyptus rubida			Common Name:	Candle bark		
Height:	9.5	Canopy spread:	4	Trunk Circum:	900	N ^o of Trunks	1
Health/Condition:	Relative density of foliage						M
	Amount of dead wood in canopy						H
	Prevalence of insect attack or disease						M
	Prevalence of epicormic growth						H
	Prevalence of mistletoe						H
Overall health/condition of the tree						G	
Age:	A	Age/Health/Condition:	A/G	Form:	T	Hazard Potential:	L
Habitat Value:	N			Tolerance to Disturbance:	M		

Contribution to Future Urban Amenity:

Scenic:	H	Rareness or Commonness:	M	Habitat quality:	M	Cultural, Social, Scientific:	L
Contribution to Immediate Landscaping:	M		Comment:	Good tree.			
Economic justification for retention or removal:							
Ameliorative work to reduce Risk:	N			Is work cost effective?:			
Landscape Groups:			Comment:				

Tree Protection and Management:

Tree Protection Zone & Conditions:	M	b, c & d always apply
Arboricultural Notes:	Potential weak union at 4 metres.	

MOLONGLO / COOMBS & WRIGHT TREE ASSESSMENT

Tree N°:	1097
----------	------



Regulated Tree:	N
Classification of Tree Quality:	
• Arboricultural Assessment	P
• Contribution to Urban Amenity	P
Recommendation:	Remove
Location	

Survey Details:

Organisation:	dsb Landscape Architects	Grid Co-ordinates:	E 202980.418	N 600369.621
Date of Survey:	4 th November 2009	Assessor ID:	JL & ST	

Tree Details:

Species:	Eucalyptus bicostata			Common Name:	Blue gum		
Height:	9	Canopy spread:	4	Trunk Circum:	900	N° of Trunks	1
Health/Condition:	Relative density of foliage						L
	Amount of dead wood in canopy						L
	Prevalence of insect attack or disease						L
	Prevalence of epicormic growth						L
	Prevalence of mistletoe						H
Overall health/condition of the tree						P	
Age:	A	Age/Health/Condition:	A/P	Form:	S	Hazard Potential:	M
Habitat Value:	N			Tolerance to Disturbance:	M		

Contribution to Future Urban Amenity:

Scenic:	L	Rareness or Commonness:	M	Habitat quality:	M	Cultural, Social, Scientific:	L
Contribution to Immediate Landscaping:		L	Comment: Unsuitable species.				
Economic justification for retention or removal:							
Ameliorative work to reduce Risk:			N	Is work cost effective?:			
Landscape Groups:		Comment:					

Tree Protection and Management:

Tree Protection Zone & Conditions:	M	b, c & d always apply					
Arboricultural Notes:	Very poor form.						

MOLONGLO / COOMBS & WRIGHT TREE ASSESSMENT

Tree N°: 1098



Regulated Tree:	N
Classification of Tree Quality:	
• Arboricultural Assessment	P
• Contribution to Urban Amenity	P
Recommendation:	Remove
Location	

Survey Details:

Organisation:	dsb Landscape Architects	Grid Co-ordinates:	E 202977.579	N 600364.653
Date of Survey:	4 th November 2009	Assessor ID:	JL & ST	

Tree Details:

Species:	Eucalyptus rubida			Common Name:	Candle bark		
Height:	9	Canopy spread:	4	Trunk Circum:	1000	N° of Trunks	2
Health/Condition:	Relative density of foliage						M
	Amount of dead wood in canopy						H
	Prevalence of insect attack or disease						M
	Prevalence of epicormic growth						L
	Prevalence of mistletoe						H
Overall health/condition of the tree						P	
Age:	A	Age/Health/Condition:	A/P	Form:	U	Hazard Potential:	M
Habitat Value:	N			Tolerance to Disturbance:	M		

Contribution to Future Urban Amenity:

Scenic:	L	Rareness or Commonness:	M	Habitat quality:	M	Cultural, Social, Scientific:	L
Contribution to Immediate Landscaping:		L	Comment:				
Economic justification for retention or removal:							
Ameliorative work to reduce Risk:			Y	Is work cost effective?:			N
Landscape Groups:		Comment:					

Tree Protection and Management:

Tree Protection Zone & Conditions:	M	b, c & d always apply
Arboricultural Notes:	Removing trunks will damage tree.	

MOLONGLO / COOMBS & WRIGHT TREE ASSESSMENT

Tree N°: 1099



Regulated Tree:	Y
Classification of Tree Quality:	
• Arboricultural Assessment	P
• Contribution to Urban Amenity	P
Recommendation:	Remove
Location	

Survey Details:

Organisation:	dsb Landscape Architects	Grid Co-ordinates:	E 202969.273 N 600352.125
Date of Survey:	4 th November 2009	Assessor ID:	JL & ST

Tree Details:

Species:	Eucalyptus rubida			Common Name:	Candle bark		
Height:	9	Canopy spread:	4	Trunk Circum:	1600	N° of Trunks	4
Health/Condition:	Relative density of foliage						M
	Amount of dead wood in canopy						M
	Prevalence of insect attack or disease						M
	Prevalence of epicormic growth						M
	Prevalence of mistletoe						H
Overall health/condition of the tree						P	
Age:	A	Age/Health/Condition:	A/P	Form:	U	Hazard Potential:	M
Habitat Value:	N			Tolerance to Disturbance:	M		

Contribution to Future Urban Amenity:

Scenic:	L	Rareness or Commonness:	M	Habitat quality:	M	Cultural, Social, Scientific:	L
Contribution to Immediate Landscaping:		L	Comment:				
Economic justification for retention or removal:							
Ameliorative work to reduce Risk:			Y	Is work cost effective?:			N
Landscape Groups:		Comment:					

Tree Protection and Management:

Tree Protection Zone & Conditions:	M	b, c & d always apply
Arboricultural Notes:	Removing trunks will damage tree.	

MOLONGLO / COOMBS & WRIGHT TREE ASSESSMENT

Tree N^o: 1100



Regulated Tree:	N
Classification of Tree Quality:	
• Arboricultural Assessment	P
• Contribution to Urban Amenity	P
Recommendation:	Remove
Location	

Survey Details:

Organisation:	dsb Landscape Architects	Grid Co-ordinates:	E 202962.859	N 600342.535
Date of Survey:	4 th November 2009	Assessor ID:	JL & ST	

Tree Details:

Species:	Eucalyptus rubida			Common Name:	Candle bark		
Height:	6.5	Canopy spread:	5	Trunk Circum:	1200	N ^o of Trunks	4
Health/Condition:	Relative density of foliage						L
	Amount of dead wood in canopy						M
	Prevalence of insect attack or disease						L
	Prevalence of epicormic growth						H
	Prevalence of mistletoe						H
Overall health/condition of the tree						P	
Age:	A	Age/Health/Condition:	A/P	Form:	U	Hazard Potential:	M
Habitat Value:	N			Tolerance to Disturbance:	M		

Contribution to Future Urban Amenity:

Scenic:	L	Rareness or Commonness:	M	Habitat quality:	M	Cultural, Social, Scientific:	L
Contribution to Immediate Landscaping:	L		Comment:	Poor form.			
Economic justification for retention or removal:							
Ameliorative work to reduce Risk:	Y			Is work cost effective?:	N		
Landscape Groups:	Comment:						

Tree Protection and Management:

Tree Protection Zone & Conditions:	M	b, c & d always apply
Arboricultural Notes:	Removing trunks will damage tree.	

MOLONGLO / COOMBS & WRIGHT TREE ASSESSMENT

Tree N°: 1101



Regulated Tree:	N
Classification of Tree Quality:	
• Arboricultural Assessment	P
• Contribution to Urban Amenity	P
Recommendation:	Remove
Location	

Survey Details:

Organisation:	dsb Landscape Architects	Grid Co-ordinates:	E 202958.925	N 600341.912
Date of Survey:	4 th November 2009	Assessor ID:	JL & ST	

Tree Details:

Species:	Eucalyptus viminalis			Common Name:	Ribbon gum		
Height:	6.5	Canopy spread:	5	Trunk Circum:	1100	N° of Trunks	1
Health/Condition:	Relative density of foliage						L
	Amount of dead wood in canopy						L
	Prevalence of insect attack or disease						M
	Prevalence of epicormic growth						H
	Prevalence of mistletoe						H
Overall health/condition of the tree						P	
Age:	A	Age/Health/Condition:	A/P	Form:	U	Hazard Potential:	M
Habitat Value:	N			Tolerance to Disturbance:	M		

Contribution to Future Urban Amenity:

Scenic:	L	Rareness or Commonness:	M	Habitat quality:	M	Cultural, Social, Scientific:	L	
Contribution to Immediate Landscaping:		L	Comment: Very poor form.					
Economic justification for retention or removal:								
Ameliorative work to reduce Risk:			Y	Is work cost effective?:				N
Landscape Groups:		Comment:						

Tree Protection and Management:

Tree Protection Zone & Conditions:	M	b, c & d always apply					
Arboricultural Notes:							

MOLONGLO / COOMBS & WRIGHT TREE ASSESSMENT

Tree N^o: 1102



Regulated Tree:	N
Classification of Tree Quality:	
• Arboricultural Assessment	P
• Contribution to Urban Amenity	P
Recommendation:	Remove
Location	

Survey Details:

Organisation:	dsb Landscape Architects	Grid Co-ordinates:	E 202957.013	N 600334.195
Date of Survey:	4 th November 2009	Assessor ID:	JL & ST	

Tree Details:

Species:	Eucalyptus rubida			Common Name:	Candle bark		
Height:	9.5	Canopy spread:	4	Trunk Circum:	900	N ^o of Trunks	1
Health/Condition:	Relative density of foliage						M
	Amount of dead wood in canopy						M
	Prevalence of insect attack or disease						H
	Prevalence of epicormic growth						H
	Prevalence of mistletoe						H
Overall health/condition of the tree						P	
Age:	A	Age/Health/Condition:	A/P	Form:	U	Hazard Potential:	M
Habitat Value:	N			Tolerance to Disturbance:	M		

Contribution to Future Urban Amenity:

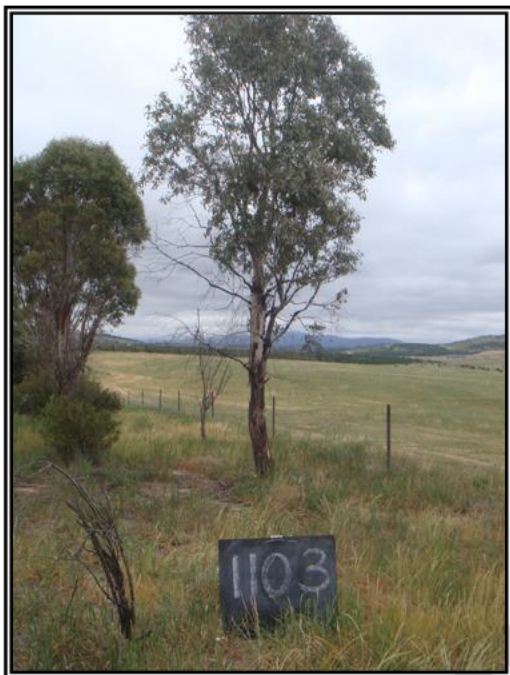
Scenic:	L	Rareness or Commonness:	M	Habitat quality:	M	Cultural, Social, Scientific:	L
Contribution to Immediate Landscaping:		L	Comment:				
Economic justification for retention or removal:							
Ameliorative work to reduce Risk:			Y	Is work cost effective?:			N
Landscape Groups:		Comment:					

Tree Protection and Management:

Tree Protection Zone & Conditions:	M	b, c & d always apply
Arboricultural Notes:	Poor union at 2 metres.	

MOLONGLO / COOMBS & WRIGHT TREE ASSESSMENT

Tree N^o: 1103



Regulated Tree:	N
Classification of Tree Quality:	
• Arboricultural Assessment	M
• Contribution to Urban Amenity	M
Recommendation:	Retain
Location	

Survey Details:

Organisation:	dsb Landscape Architects	Grid Co-ordinates:	E 202937.478 N 600313.901
Date of Survey:	4 th November 2009	Assessor ID:	JL & ST

Tree Details:

Species:	Eucalyptus rubida			Common Name:	Candle bark		
Height:	7	Canopy spread:	5	Trunk Circum:	900	N ^o of Trunks	1
Health/Condition:	Relative density of foliage						M
	Amount of dead wood in canopy						M
	Prevalence of insect attack or disease						H
	Prevalence of epicormic growth						H
	Prevalence of mistletoe						H
Overall health/condition of the tree						F	
Age:	A	Age/Health/Condition:	A/F	Form:	T	Hazard Potential:	L
Habitat Value:	N			Tolerance to Disturbance:	M		

Contribution to Future Urban Amenity:

Scenic:	M	Rareness or Commonness:	M	Habitat quality:	M	Cultural, Social, Scientific:	L
Contribution to Immediate Landscaping:	M		Comment:	A reasonably good young tree.			
Economic justification for retention or removal:							
Ameliorative work to reduce Risk:	N		Is work cost effective?:				
Landscape Groups:		Comment:					

Tree Protection and Management:

Tree Protection Zone & Conditions:	M	b, c & d always apply
Arboricultural Notes:	Light prune required.	

MOLONGLO / COOMBS & WRIGHT TREE ASSESSMENT

Tree N°: 1104



Regulated Tree:	N
Classification of Tree Quality:	
• Arboricultural Assessment	P
• Contribution to Urban Amenity	P
Recommendation:	Remove
Location	

Survey Details:

Organisation:	dsb Landscape Architects	Grid Co-ordinates:	E 202942.336 N 600311.705
Date of Survey:	4 th November 2009	Assessor ID:	JL & ST

Tree Details:

Species:	Eucalyptus viminalis			Common Name:	Ribbon gum		
Height:	7.5	Canopy spread:	4	Trunk Circum:	1300	N° of Trunks	2
Health/Condition:	Relative density of foliage						M
	Amount of dead wood in canopy						M
	Prevalence of insect attack or disease						H
	Prevalence of epicormic growth						H
	Prevalence of mistletoe						H
Overall health/condition of the tree						P	
Age:	A	Age/Health/Condition:	A/P	Form:	U	Hazard Potential:	M
Habitat Value:	N			Tolerance to Disturbance:	M		

Contribution to Future Urban Amenity:

Scenic:	L	Rareness or Commonness:	M	Habitat quality:	M	Cultural, Social, Scientific:	L
Contribution to Immediate Landscaping:		L	Comment:				
Economic justification for retention or removal:							
Ameliorative work to reduce Risk:			Y	Is work cost effective?:			N
Landscape Groups:		Comment:					

Tree Protection and Management:

Tree Protection Zone & Conditions:	M	b, c & d always apply
Arboricultural Notes:	Removing trunks will damage tree.	

MOLONGLO / COOMBS & WRIGHT TREE ASSESSMENT

Tree N°: 1105



Regulated Tree:	N
Classification of Tree Quality:	
• Arboricultural Assessment	P
• Contribution to Urban Amenity	P
Recommendation:	Remove
Location	

Survey Details:

Organisation:	dsb Landscape Architects	Grid Co-ordinates:	E 202939.164	N 600306.916
Date of Survey:	4th November 2009	Assessor ID:	JL & ST	

Tree Details:

Species:	Eucalyptus bicostata			Common Name:	Blue gum		
Height:	6.5	Canopy spread:	4	Trunk Circum:	900	N° of Trunks	1
Health/Condition:	Relative density of foliage						L
	Amount of dead wood in canopy						M
	Prevalence of insect attack or disease						M
	Prevalence of epicormic growth						M
	Prevalence of mistletoe						H
Overall health/condition of the tree						P	
Age:	A	Age/Health/Condition:	A/P	Form:	S	Hazard Potential:	L
Habitat Value:	N			Tolerance to Disturbance:	M		

Contribution to Future Urban Amenity:

Scenic:	L	Rareness or Commonness:	M	Habitat quality:	M	Cultural, Social, Scientific:	L
Contribution to Immediate Landscaping:		L	Comment: Unsuitable species.				
Economic justification for retention or removal:							
Ameliorative work to reduce Risk:			N	Is work cost effective?:			
Landscape Groups:		Comment:					

Tree Protection and Management:

Tree Protection Zone & Conditions:	M	b, c & d always apply					
Arboricultural Notes:	Dying.						

MOLONGLO / COOMBS & WRIGHT TREE ASSESSMENT

Tree N°:	1106
----------	------



Regulated Tree:	N
Classification of Tree Quality:	
• Arboricultural Assessment	P
• Contribution to Urban Amenity	P
Recommendation:	Remove
Location	

Survey Details:

Organisation:	dsb Landscape Architects	Grid Co-ordinates:	E 202935.301	N 600306.257
Date of Survey:	4th November 2009	Assessor ID:	JL & ST	

Tree Details:

Species:	Eucalyptus viminalis			Common Name:	Ribbon gum		
Height:	6.5	Canopy spread:	5	Trunk Circum:	1100	N° of Trunks	1
Health/Condition:	Relative density of foliage						L
	Amount of dead wood in canopy						M
	Prevalence of insect attack or disease						M
	Prevalence of epicormic growth						M
	Prevalence of mistletoe						H
Overall health/condition of the tree						P	
Age:	A	Age/Health/Condition:	A/P	Form:	U	Hazard Potential:	M
Habitat Value:	N			Tolerance to Disturbance:	M		

Contribution to Future Urban Amenity:

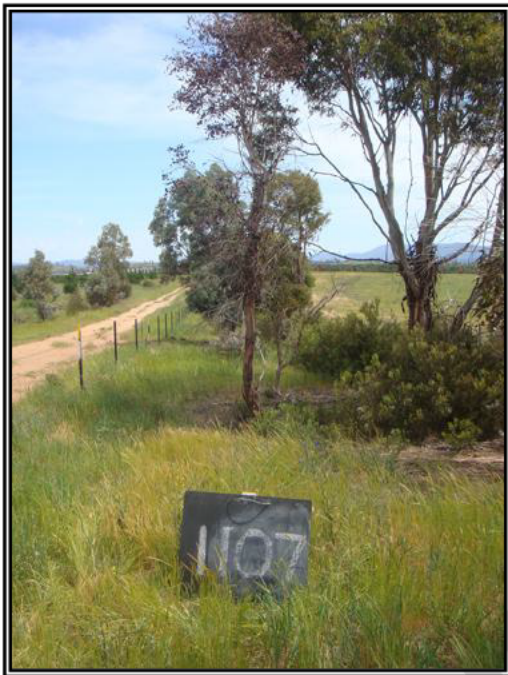
Scenic:	L	Rareness or Commonness:	M	Habitat quality:	M	Cultural, Social, Scientific:	L
Contribution to Immediate Landscaping:	L	Comment:					
Economic justification for retention or removal:							
Ameliorative work to reduce Risk:	Y			Is work cost effective?:	N		
Landscape Groups:		Comment:					

Tree Protection and Management:

Tree Protection Zone & Conditions:	M	b, c & d always apply
Arboricultural Notes:	50% of tree dead.	

MOLONGLO / COOMBS & WRIGHT TREE ASSESSMENT

Tree N°:	1107
----------	------



Regulated Tree:	N
Classification of Tree Quality:	
• Arboricultural Assessment	
• Contribution to Urban Amenity	
Recommendation:	Remove
Location	

Survey Details:

Organisation:	dsb Landscape Architects	Grid Co-ordinates:	E 202933.423	N 600298.194
Date of Survey:	4th November 2009	Assessor ID:	JL & ST	

Tree Details:

Species:					Common Name:							
Height:				Canopy spread:			Trunk Circum:			N° of Trunks		
Health/Condition:	Relative density of foliage											
	Amount of dead wood in canopy											
	Prevalence of insect attack or disease											
	Prevalence of epicormic growth											
	Prevalence of mistletoe											
Overall health/condition of the tree												
Age:				Age/Health/Condition:			Form:			Hazard Potential:		
Habitat Value:					Tolerance to Disturbance:							

Contribution to Future Urban Amenity:

Scenic:				Rareness or Commonness:			Habitat quality:			Cultural, Social, Scientific:		
Contribution to Immediate Landscaping:				Comment:								
Economic justification for retention or removal:												
Ameliorative work to reduce Risk:						Is work cost effective?:						
Landscape Groups:			Comment:									

Tree Protection and Management:

Tree Protection Zone & Conditions:	b, c & d always apply										
Arboricultural Notes:	Dead.										

MOLONGLO / COOMBS & WRIGHT TREE ASSESSMENT

Tree N°: 1108



Regulated Tree:	N
Classification of Tree Quality:	
• Arboricultural Assessment	P
• Contribution to Urban Amenity	P
Recommendation:	Remove
Location	

Survey Details:

Organisation:	dsb Landscape Architects	Grid Co-ordinates:	E 202929.489	N 600297.280
Date of Survey:	4th November 2009	Assessor ID:	JL & ST	

Tree Details:

Species:	Eucalyptus viminalis			Common Name:	Ribbon gum		
Height:	8	Canopy spread:	6	Trunk Circum:	1300	N° of Trunks	1
Health/Condition:	Relative density of foliage						M
	Amount of dead wood in canopy						M
	Prevalence of insect attack or disease						L
	Prevalence of epicormic growth						M
	Prevalence of mistletoe						H
Overall health/condition of the tree						P	
Age:	A	Age/Health/Condition:	A/P	Form:	S	Hazard Potential:	M
Habitat Value:	N			Tolerance to Disturbance:	M		

Contribution to Future Urban Amenity:

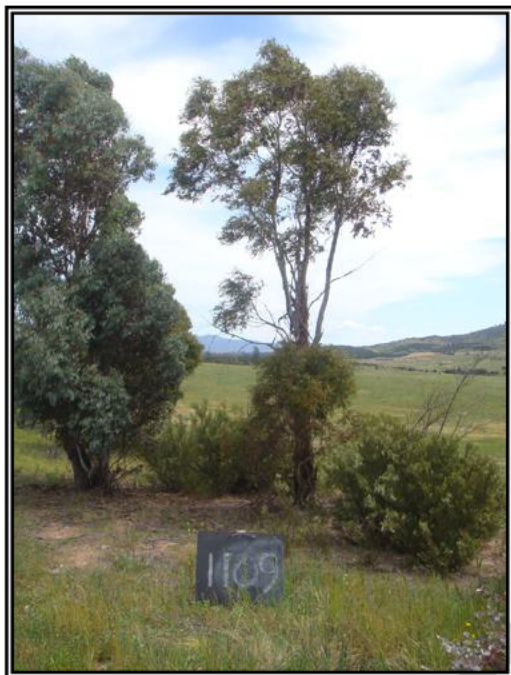
Scenic:	L	Rareness or Commonness:	M	Habitat quality:	M	Cultural, Social, Scientific:	L
Contribution to Immediate Landscaping:	L		Comment:	Poor form.			
Economic justification for retention or removal:							
Ameliorative work to reduce Risk:	Y			Is work cost effective?:	N		
Landscape Groups:	Comment:						

Tree Protection and Management:

Tree Protection Zone & Conditions:	M	b, c & d always apply
Arboricultural Notes:		

MOLONGLO / COOMBS & WRIGHT TREE ASSESSMENT

Tree N°: 1109



Regulated Tree:	N
Classification of Tree Quality:	
• Arboricultural Assessment	P
• Contribution to Urban Amenity	P
Recommendation:	Remove
Location	

Survey Details:

Organisation:	dsb Landscape Architects	Grid Co-ordinates:	E 202920.388	N 600283.065
Date of Survey:	4th November 2009	Assessor ID:	JL & ST	

Tree Details:

Species:	Eucalyptus viminalis			Common Name:	Ribbon gum		
Height:	7	Canopy spread:	4	Trunk Circum:	900	N° of Trunks	2
Health/Condition:	Relative density of foliage						L
	Amount of dead wood in canopy						M
	Prevalence of insect attack or disease						M
	Prevalence of epicormic growth						M
	Prevalence of mistletoe						H
Overall health/condition of the tree						P	
Age:	A	Age/Health/Condition:	A/P	Form:	U	Hazard Potential:	M
Habitat Value:	N			Tolerance to Disturbance:	M		

Contribution to Future Urban Amenity:

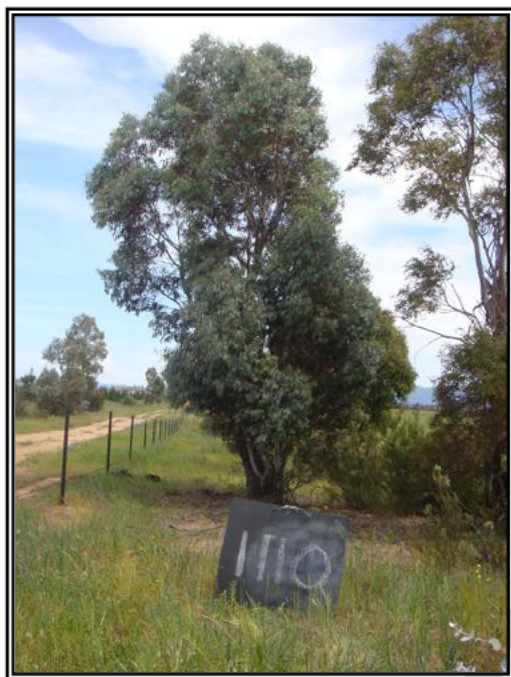
Scenic:	L	Rareness or Commonness:	M	Habitat quality:	M	Cultural, Social, Scientific:	L
Contribution to Immediate Landscaping:	L		Comment:	Poor form.			
Economic justification for retention or removal:							
Ameliorative work to reduce Risk:	N			Is work cost effective?:			
Landscape Groups:		Comment:					

Tree Protection and Management:

Tree Protection Zone & Conditions:	M	b, c & d always apply
Arboricultural Notes:	Burnt at base.	

MOLONGLO / COOMBS & WRIGHT TREE ASSESSMENT

Tree N°: 1110



Regulated Tree:	Y
Classification of Tree Quality:	
• Arboricultural Assessment	P
• Contribution to Urban Amenity	P
Recommendation:	Remove
Location	

Survey Details:

Organisation:	dsb Landscape Architects	Grid Co-ordinates:	E 202921.400	N 600279.326
Date of Survey:	4th November 2009	Assessor ID:	JL & ST	

Tree Details:

Species:	Eucalyptus rubida			Common Name:	Candle bark		
Height:	6.5	Canopy spread:	5	Trunk Circum:	1800	N° of Trunks	7
Health/Condition:	Relative density of foliage						H
	Amount of dead wood in canopy						H
	Prevalence of insect attack or disease						H
	Prevalence of epicormic growth						M
	Prevalence of mistletoe						H
Overall health/condition of the tree						F	
Age:	A	Age/Health/Condition:	A/F	Form:	U	Hazard Potential:	M
Habitat Value:	N			Tolerance to Disturbance:	M		

Contribution to Future Urban Amenity:

Scenic:	L	Rareness or Commonness:	M	Habitat quality:	M	Cultural, Social, Scientific:	L
Contribution to Immediate Landscaping:		L	Comment:				
Economic justification for retention or removal:							
Ameliorative work to reduce Risk:			Y	Is work cost effective?:			N
Landscape Groups:		Comment:					

Tree Protection and Management:

Tree Protection Zone & Conditions:	M	b, c & d always apply
Arboricultural Notes:	Removing trunks will damage tree.	

MOLONGLO / COOMBS & WRIGHT TREE ASSESSMENT

Tree N°: 1111



Regulated Tree:	N
Classification of Tree Quality:	
• Arboricultural Assessment	P
• Contribution to Urban Amenity	P
Recommendation:	Remove
Location	

Survey Details:

Organisation:	dsb Landscape Architects	Grid Co-ordinates:	E 202913.962	N 600272.763
Date of Survey:	4th November 2009	Assessor ID:	JL & ST	

Tree Details:

Species:	Eucalyptus viminalis			Common Name:	Ribbon gum		
Height:	6	Canopy spread:	4	Trunk Circum:	1100	N° of Trunks	2
Health/Condition:	Relative density of foliage						M
	Amount of dead wood in canopy						M
	Prevalence of insect attack or disease						M
	Prevalence of epicormic growth						H
	Prevalence of mistletoe						H
Overall health/condition of the tree						F	
Age:	A	Age/Health/Condition:	A/F	Form:	S	Hazard Potential:	L
Habitat Value:	N			Tolerance to Disturbance:	M		

Contribution to Future Urban Amenity:

Scenic:	L	Rareness or Commonness:	M	Habitat quality:	M	Cultural, Social, Scientific:	L
Contribution to Immediate Landscaping:	L		Comment:	Small stunted tree.			
Economic justification for retention or removal:							
Ameliorative work to reduce Risk:	N			Is work cost effective?:			
Landscape Groups:			Comment:				

Tree Protection and Management:

Tree Protection Zone & Conditions:	M	b, c & d always apply
Arboricultural Notes:		

MOLONGLO / COOMBS & WRIGHT TREE ASSESSMENT

Tree N°: 1112



Regulated Tree:	N
Classification of Tree Quality:	
• Arboricultural Assessment	P
• Contribution to Urban Amenity	P
Recommendation:	Remove
Location	

Survey Details:

Organisation:	dsb Landscape Architects	Grid Co-ordinates:	E 202904.918	N 600259.779
Date of Survey:	4th November 2009	Assessor ID:	JL & ST	

Tree Details:

Species:	Eucalyptus viminalis			Common Name:	Ribbon gum		
Height:	5.5	Canopy spread:	3	Trunk Circum:	800	N° of Trunks	2
Health/Condition:	Relative density of foliage						M
	Amount of dead wood in canopy						M
	Prevalence of insect attack or disease						M
	Prevalence of epicormic growth						H
	Prevalence of mistletoe						H
Overall health/condition of the tree						P	
Age:	A	Age/Health/Condition:	A/P	Form:	S	Hazard Potential:	L
Habitat Value:	N			Tolerance to Disturbance:	M		

Contribution to Future Urban Amenity:

Scenic:	L	Rareness or Commonness:	M	Habitat quality:	M	Cultural, Social, Scientific:	L
Contribution to Immediate Landscaping:	L		Comment:	Small stunted tree.			
Economic justification for retention or removal:							
Ameliorative work to reduce Risk:	N			Is work cost effective?:			
Landscape Groups:		Comment:					

Tree Protection and Management:

Tree Protection Zone & Conditions:	M	b, c & d always apply
Arboricultural Notes:		

MOLONGLO / COOMBS & WRIGHT TREE ASSESSMENT

Tree N°: 1113



Regulated Tree:	N
Classification of Tree Quality:	
• Arboricultural Assessment	P
• Contribution to Urban Amenity	P
Recommendation:	Remove
Location	

Survey Details:

Organisation:	dsb Landscape Architects	Grid Co-ordinates:	E 202885.708	N 600230.870
Date of Survey:	4th November 2009	Assessor ID:	JL & ST	

Tree Details:

Species:	Eucalyptus viminalis			Common Name:	Ribbon gum		
Height:	6	Canopy spread:	4	Trunk Circum:	600	N° of Trunks	1
Health/Condition:	Relative density of foliage						L
	Amount of dead wood in canopy						M
	Prevalence of insect attack or disease						M
	Prevalence of epicormic growth						M
	Prevalence of mistletoe						H
Overall health/condition of the tree						P	
Age:	A	Age/Health/Condition:	A/P	Form:	U	Hazard Potential:	L
Habitat Value:	N			Tolerance to Disturbance:	M		

Contribution to Future Urban Amenity:

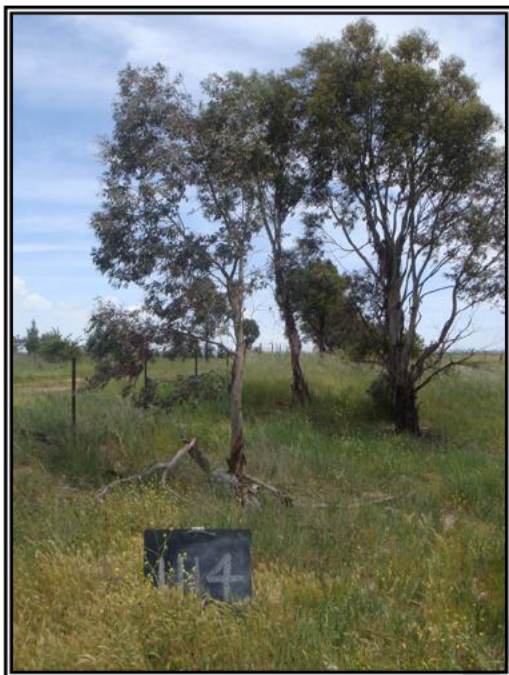
Scenic:	L	Rareness or Commonness:	M	Habitat quality:	M	Cultural, Social, Scientific:	L
Contribution to Immediate Landscaping:	L		Comment:	Dying.			
Economic justification for retention or removal:							
Ameliorative work to reduce Risk:	N			Is work cost effective?:			
Landscape Groups:			Comment:				

Tree Protection and Management:

Tree Protection Zone & Conditions:	M	b, c & d always apply
Arboricultural Notes:		

MOLONGLO / COOMBS & WRIGHT TREE ASSESSMENT

Tree N^o: 1114



Regulated Tree:	N
Classification of Tree Quality:	
• Arboricultural Assessment	P
• Contribution to Urban Amenity	P
Recommendation:	Remove
Location	

Survey Details:

Organisation:	dsb Landscape Architects	Grid Co-ordinates:	E 202874.013	N 600207.223
Date of Survey:	4th November 2009	Assessor ID:	JL & ST	

Tree Details:

Species:	Eucalyptus viminalis			Common Name:	Ribbon gum		
Height:	5	Canopy spread:	2	Trunk Circum:	500	N ^o of Trunks	1
Health/Condition:	Relative density of foliage						M
	Amount of dead wood in canopy						M
	Prevalence of insect attack or disease						M
	Prevalence of epicormic growth						H
	Prevalence of mistletoe						H
Overall health/condition of the tree						P	
Age:	A	Age/Health/Condition:	A/P	Form:	U	Hazard Potential:	L
Habitat Value:	N			Tolerance to Disturbance:	M		

Contribution to Future Urban Amenity:

Scenic:	L	Rareness or Commonness:	M	Habitat quality:	M	Cultural, Social, Scientific:	L
Contribution to Immediate Landscaping:		L	Comment: Partly fallen over.				
Economic justification for retention or removal:							
Ameliorative work to reduce Risk:			N	Is work cost effective?:			
Landscape Groups:		Comment:					

Tree Protection and Management:

Tree Protection Zone & Conditions:	M	b, c & d always apply
Arboricultural Notes:		