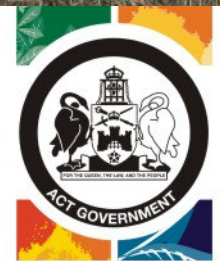


The Valley Ponds, Gungahlin

Edwina Robinson - Urban Waterways Coordinator
6207 5520/ 0466 153 641
edwina.robinson@act.gov.au
www.environment.act.gov.au/water/constructed_wetlands

August 2010



DEPARTMENT OF
THE ENVIRONMENT,
CLIMATE CHANGE,
ENERGY AND WATER

Funding

2010-2012 ACT Government Funding for design and construction of wetland \$6.5million

Project Management

Managed by Urban Waterways Program,
DECCEW

Project Support

Supported by Steering
Committee

Steering committee visiting
site 2009





Planning Context: Stormwater from the Gungahlin Well-Being Precinct is discharged via pipes to The Valley Ponds.



Natural Context: tributary of Ginninderra Creek. Above.

Right: Quartz ridge with native grassland

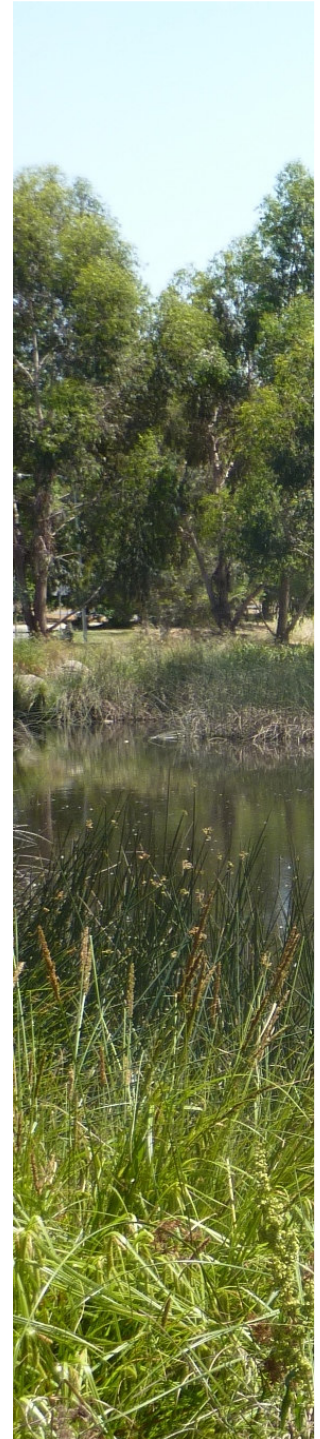


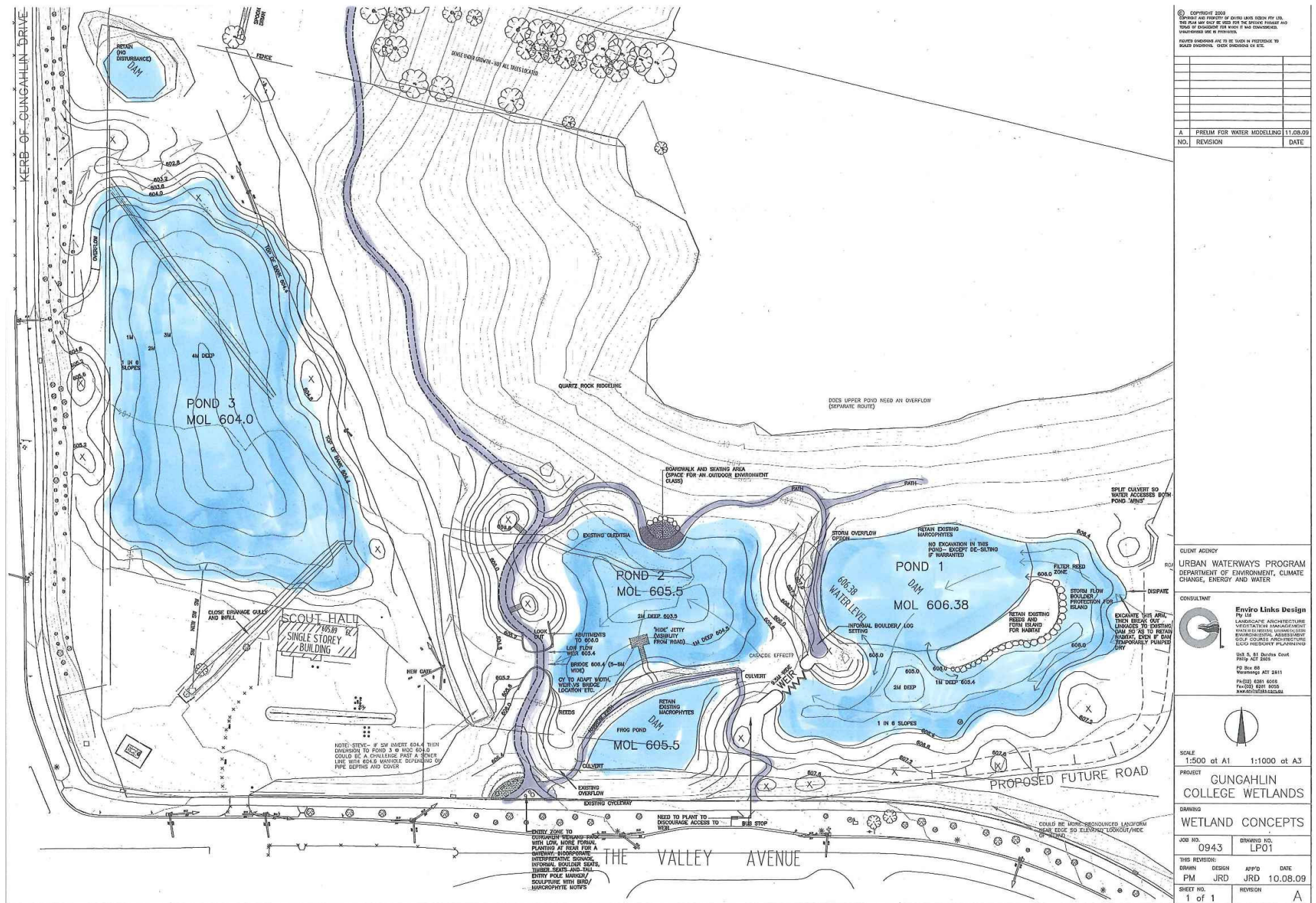
Existing pond with native grassland ridge
in background.



Studies

1. **Archaeology** – Stuart Huys & consultation with Registered Aboriginal Organisations
2. **Vegetation** - David Hogg Pty Ltd & Research & Planning, TAMS
3. **Ground water** – Ray Evans, SKM





Wetland values

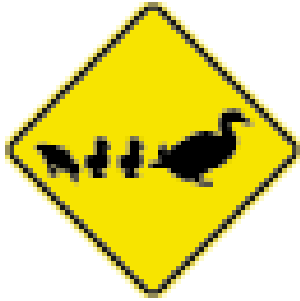


What role do wetlands play?



1. Improvements in downstream water quality
(eg Gungahlin Pond)





2. Improved urban biodiversity



3. Educational opportunities

- Proximity to Burgmann School & Gungahlin College
- *Understanding Canberra's wetlands: a school curriculum program. 2010.*
- Waterwatch & Frogwatch Programs





4. Volunteering & recreational opportunities





Community planting March 2010. Banksia St, O'Connor.



5. **Water harvesting** – opportunity to investigate the potential of harvesting stormwater for irrigation & supplying to Gungahlin College, Town Park, enclosed oval. Replacement for drinking-quality water



Outdoor learning environment



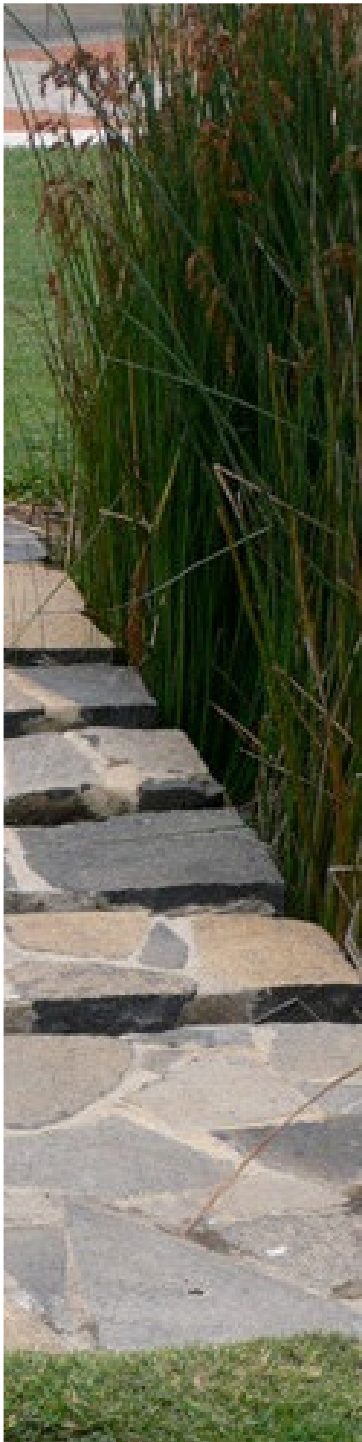
The
Sanctuary,
Tidbinbilla
Nature
Reserve





Sydney Olympic
Park, Homebush
Bay





Community input sought on the proposal

Public Workshop – 3 August 2010, Chapel,
Burgmann School

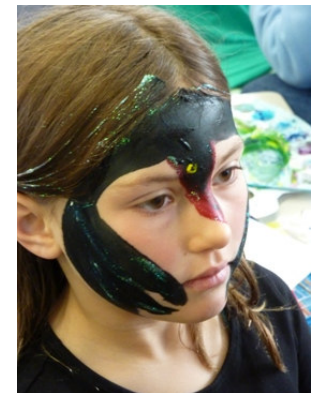
Wondrous World of Wetlands Weekend –
11am-2pm Sunday 29 August 2010

Tour de Wetlands Bike Ride – 9am Sunday
17 October 2010

**Gungahlin Public Library – Wetlands
Display** 17-23 October 2010

Story Time - 10.30am Thursday 21 October
2010

Face painting – Black
Swan



Common questions

- Will mosquitoes be a problem?
- Will the wetlands be safe?
- Who maintains the site?

