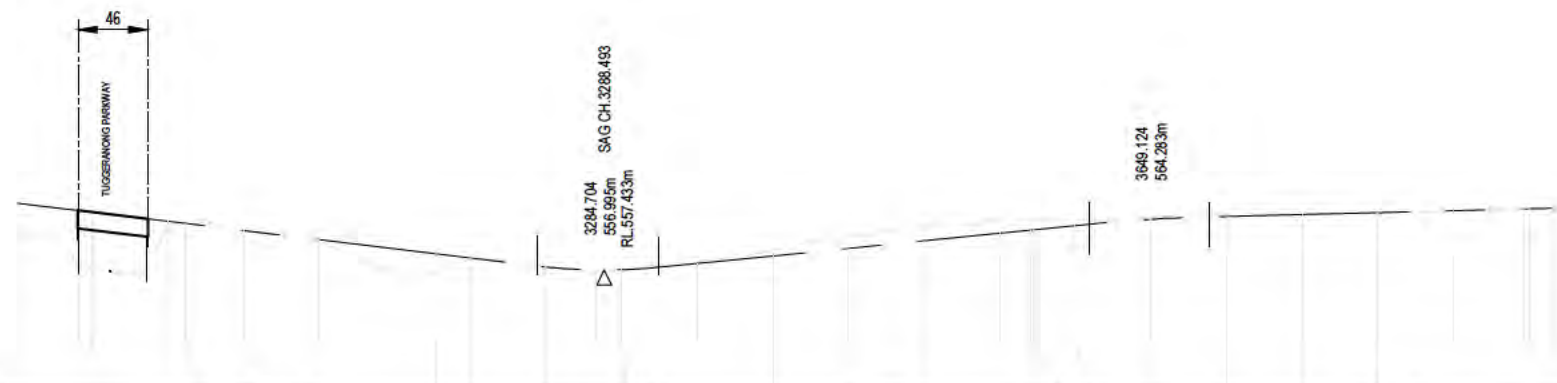


150mm ON ORIGINAL



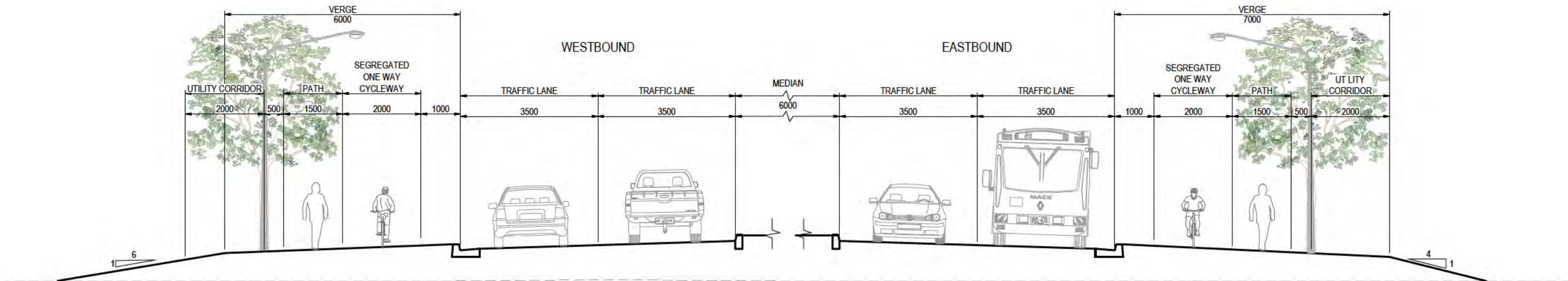
DATUM R.L.541.000

STATION	2900	2941	2950	3000	3012	3050	3100	3150	3177	3200	3250	3283	3300	3350	3400	3450	3500	3550	3570	3573	3600	3650	3700	3750	3800	3850	3897	3900	3917
EXISTING LEVELS	562.000	557.958	557.651	563.039	564.000	562.535	561.118	557.000	557.182	558.729	557.890	557.248	557.489	558.477	560.000	562.000	563.212	564.000	564.000	564.000	564.000	564.372	564.761	564.892	565.000	565.249	565.597	565.613	565.825
DESIGN LEVELS	566.299	565.302	565.090	563.881	563.591	562.671	561.462	560.253	560.599	560.043	557.842	557.440	557.469	558.301	559.301	560.301	561.301	562.301	562.703	562.752	563.301	564.144	564.537	564.787	565.037	565.287	565.522	565.537	565.621
HORIZONTAL ALIGNMENT	R=400.000		R=65.000				R=400.000						R=1310.000																
VERTICAL ALIGNMENT	G=-2.419% L=493.629						L=80.000 K=18.106		G=2.000% L=284.420						L=80.000 K=53.319		G=0.500% L=227.709												

LONGITUDINAL SECTION ALONG CONTROL MC610

NOT FOR CONSTRUCTION

DRAWING FILE LOCATION / NAME V:\Vault\Projects\3002\3002754\110_CADD\CADD\DWG\01_CONCEPT_FEASIBILITY\3002754-0623.dwg			PLOT DATE 02 Oct 2020		TIME 16:33:08								
EXTERNAL REFERENCE FILES			REV	DATE	AMENDMENT / REVISION DESCRIPTION	WVR No.	APPROVAL	TITLE	NAME	SCALES AT A1 SIZE DRAWING HORIZ. 1:2500 25 0 25 50 75 100 125 m VERT. 1:1000 10 0 10 20 30 40 50 m	DES. GNER  <b>SMEC</b> Member of the Stantec Juvang Group SMEC AUSTRALIA PTY LTD © ABN 47 065 475 149 SUITE 2, LEVEL 1, 243 NORTH-BOURNE AVENUE LYNEHAM ACT 2602 AUSTRALIA SMEC PROJECT No 3002754	CLIENT	
			01	17.06.2020	DRAFT MCA WORKSHOP - FOR INFORMATION ONLY	WVR 002	D.T.	DRAFTER	C. DAWSON				
							DRAFTING CHECK	K. CURLEY					
							DESIGNER	M. WATSON					
							DESIGN CHECK	TBC					
							PROJECT MANAGER	D. TONGE					
							PROJECT DIRECTOR	D. KEEP					
			PROJECT TITLE MOLONGLO EAST WEST ARTERIAL CONCEPT FEASIBILITY STUDY OPTION 6 ALIGNMENT - WESTBOUND LONGITUDINAL SECTION CONTROL LINE MC610 SHEET 3			SCALE AS SHOWN		PHASE FEASIBILITY STUDY		PROJECT / DRAWING No. 3002754-0623		REVISION 01	



**NOT FOR CONSTRUCTION**

**3002754 - EAST WEST ARTERIAL FEASIBILITY STUDY  
SECTION A - MOLONGLO TOWN CENTRE**

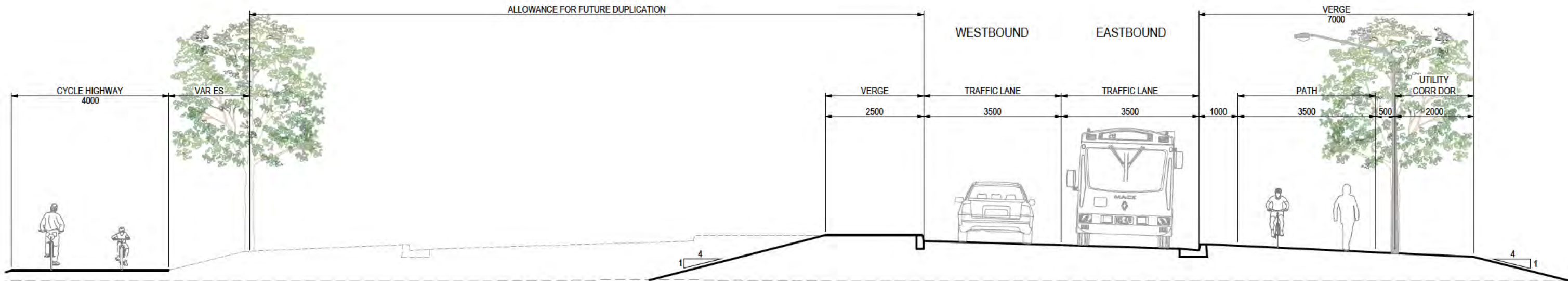
**INFORMATION DOCUMENT**

**3002754-20200513-RD-003\_ID**



Member of the Surlana Jurong Group

© ABN 47 065 475 149  
SUITE 2, LEVEL 1, 243 NORTHBOURNE AVENUE  
LYNEHAM ACT 2802 AUSTRALIA



**NOT FOR CONSTRUCTION**

**3002754 - EAST WEST ARTERIAL FEASIBILITY STUDY  
SECTION B - EAST OF TOWN CENTRE  
TO MOLONGLO EAST CONNECTOR**

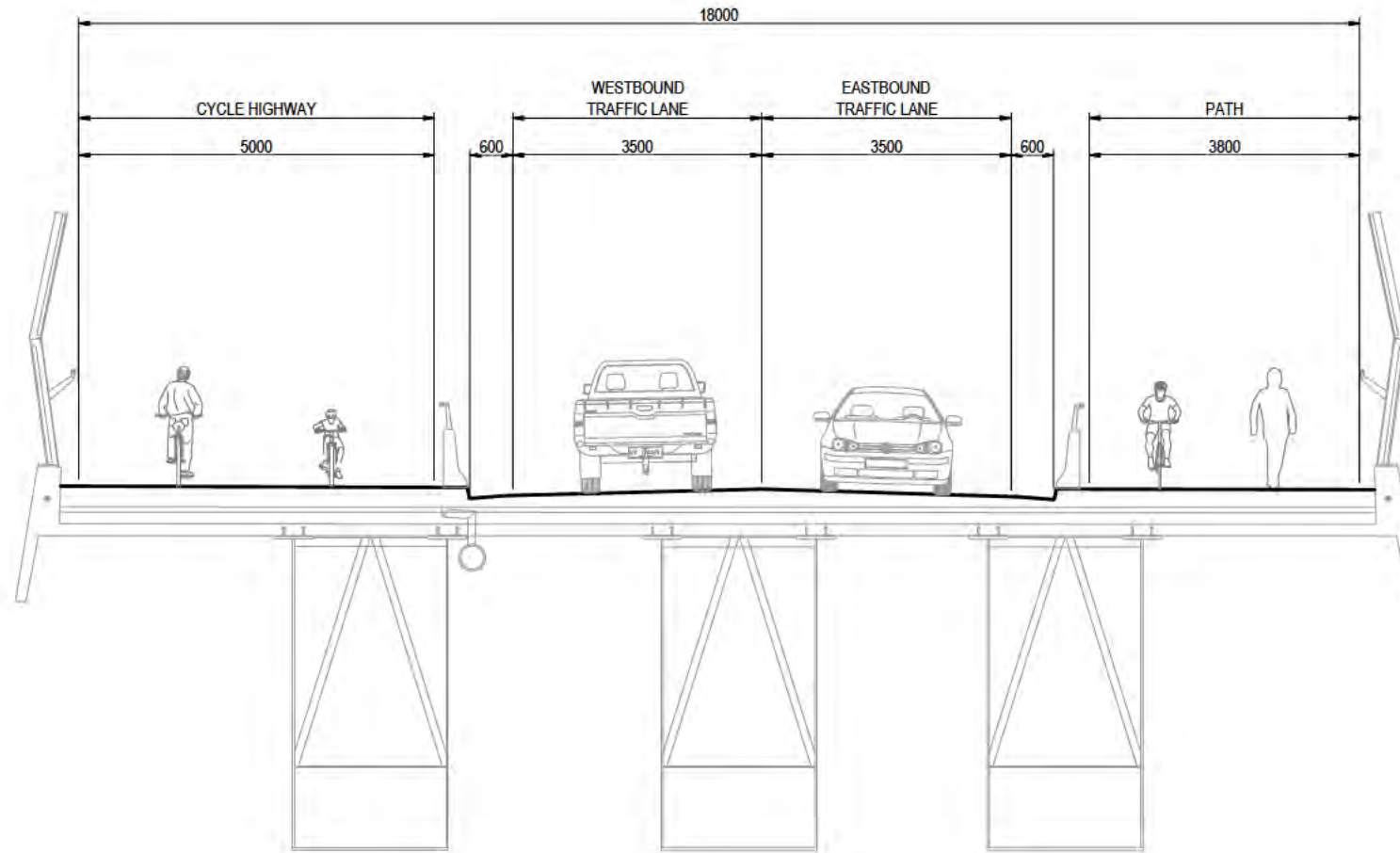
**INFORMATION DOCUMENT**

**3002754-20200513-RD-004\_ID**



Member of the Surlana Jurong Group

© ABN 47 005 475 149  
SUITE 2, LEVEL 1, 243 NORTHBOURNE AVENUE  
LYNEHAM ACT 2802 AUSTRALIA



**NOT FOR CONSTRUCTION**

**3002754 - EAST WEST ARTERIAL FEASIBILITY STUDY  
SECTION C - MOLONGLO RIVER BRIDGE**

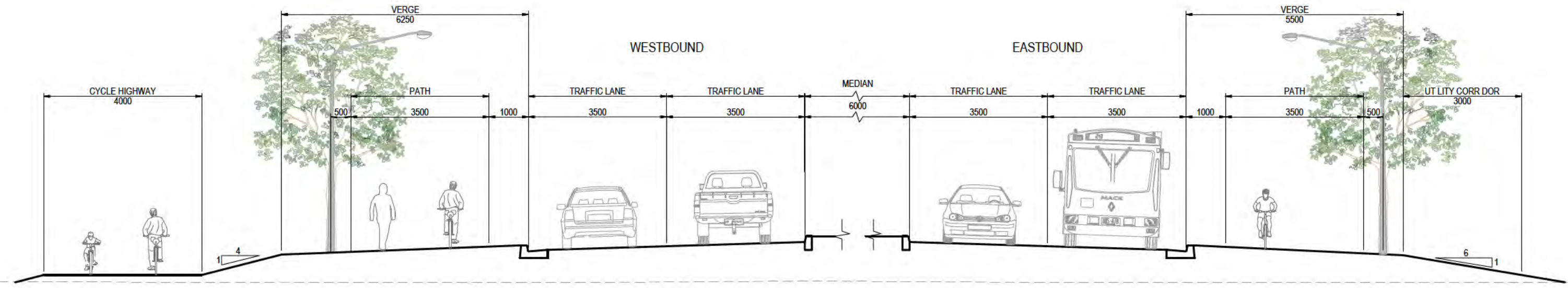
**INFORMATION DOCUMENT**

**3002754-20200513-RD-005\_ID**



Member of the Surlana Jurong Group

© ABN 47 085 475 149  
SUITE 2, LEVEL 1, 243 NORTH-BOURNE AVENUE  
LYNEHAM ACT 2802 AUSTRALIA



**NOT FOR CONSTRUCTION**

**3002754 - EAST WEST ARTERIAL FEASIBILITY STUDY  
SECTION D - MOLONGLO EAST CONNECTOR  
TO TUGGERANONG PARKWAY**

**INFORMATION DOCUMENT  
3002754-20200513-RD-006\_ID**

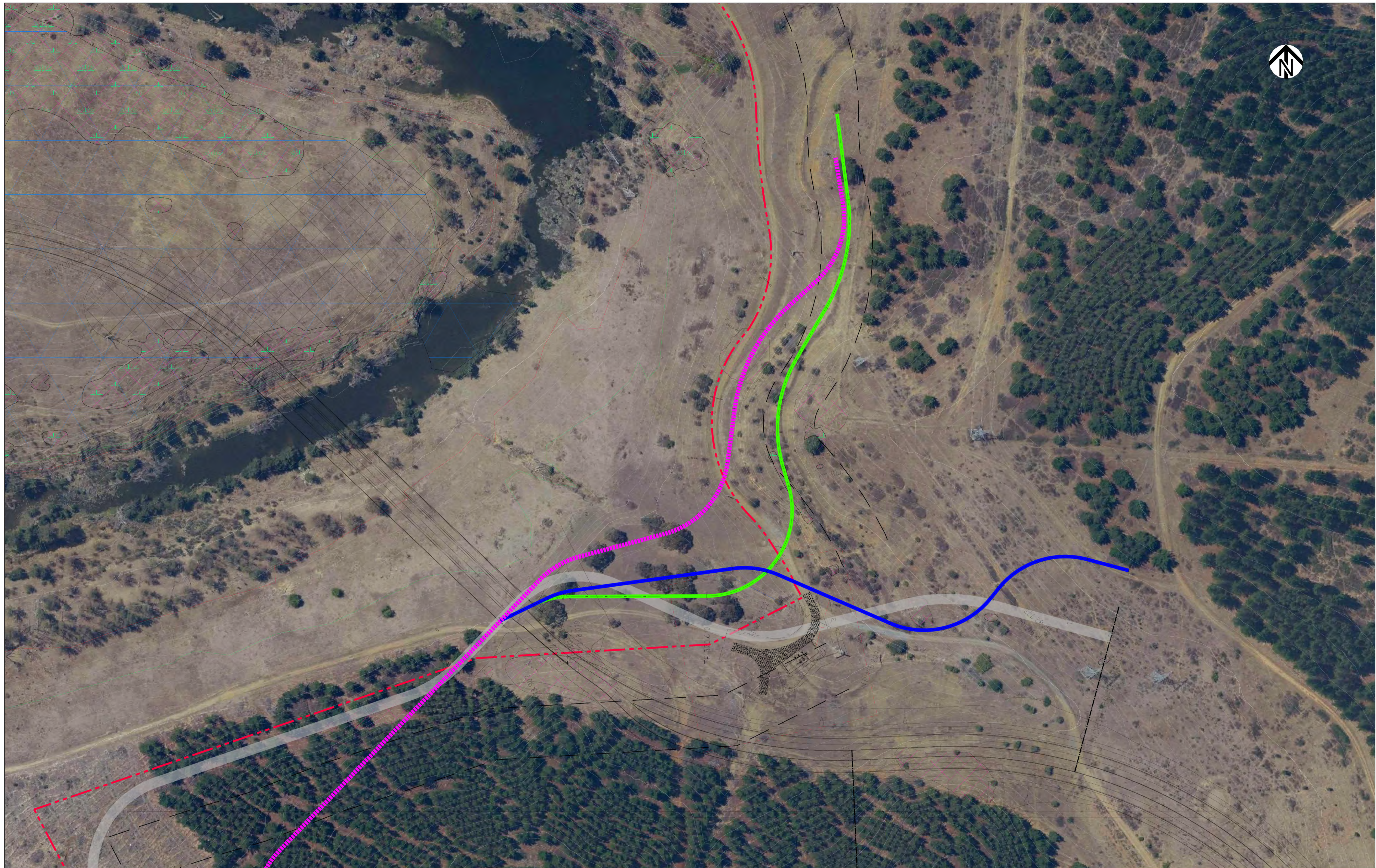


Member of the Surbana Jurong Group

© ABN 47 005 475 149  
SUITE 2, LEVEL 1, 243 NORTHBOURNE AVENUE  
LYNEHAM ACT 2802 AUSTRALIA

## Appendix B Design Option Sketches – Riverside Edge Road





**NOT FOR CONSTRUCTION**



**EAST WEST ARTERIAL  
BOUNDARY ROAD - PLANS SHEET 1**

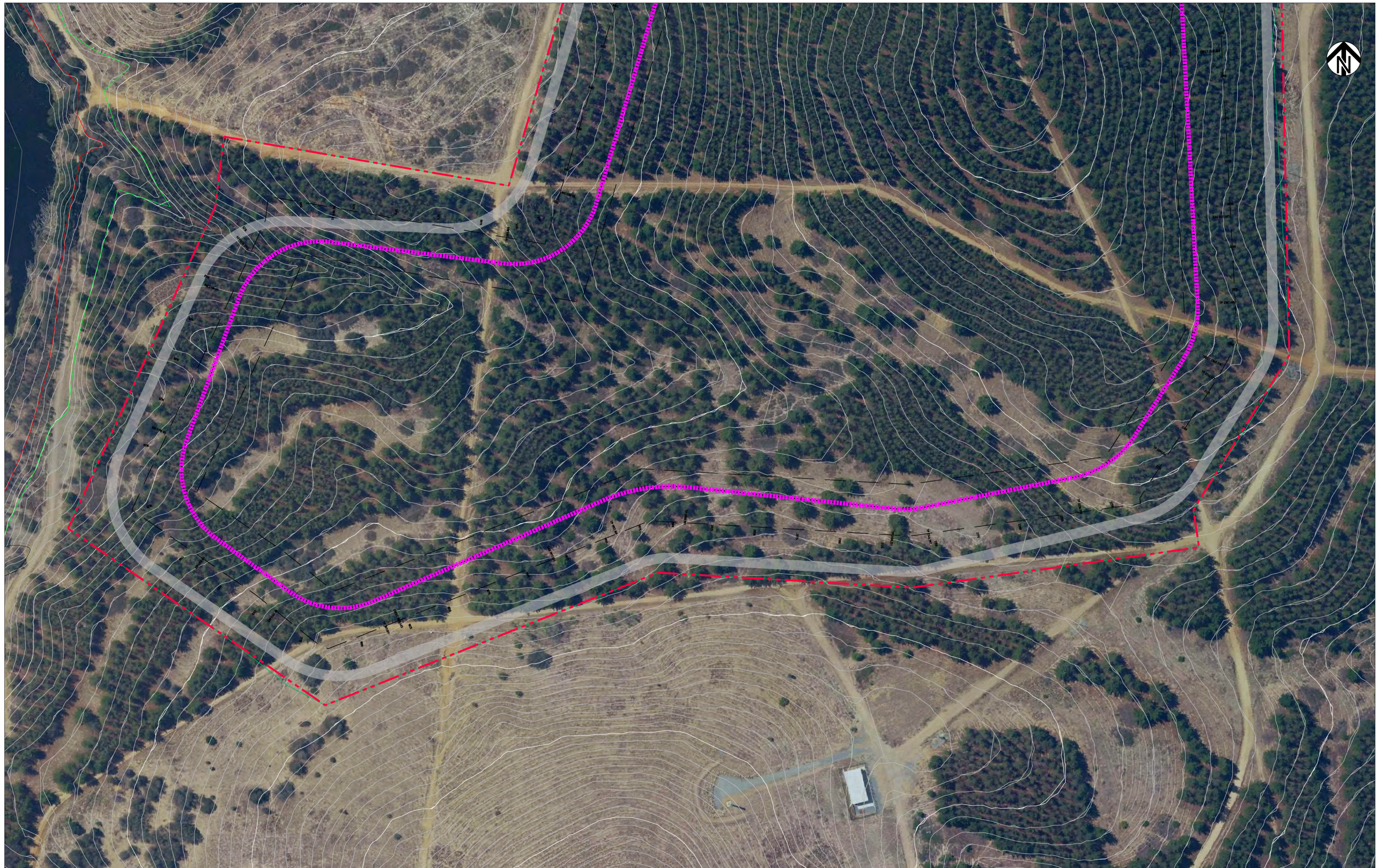
**INFORMATION DOCUMENT**

**3002754\_OCTOBER 2020\_MMW**

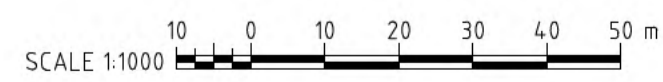


© ABN 47 065 475 149  
SUITE 2, LEVEL 1, 243 NORTHBOURNE AVENUE  
LYNEHAM ACT 2602 AUSTRALIA





**NOT FOR CONSTRUCTION**



**EAST WEST ARTERIAL  
BOUNDARY ROAD - PLANS SHEET 3**

**INFORMATION DOCUMENT**

**3002754\_OCTOBER 2020\_MMW**

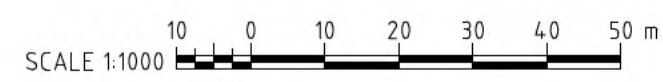


Member of the Surbana Jurong Group

© ABN 47 065 475 149  
SUITE 2, LEVEL 1, 243 NORTHBOURNE AVENUE  
LYNEHAM ACT 2602 AUSTRALIA



**NOT FOR CONSTRUCTION**



**EAST WEST ARTERIAL  
BOUNDARY ROAD - PLANS SHEET 4**

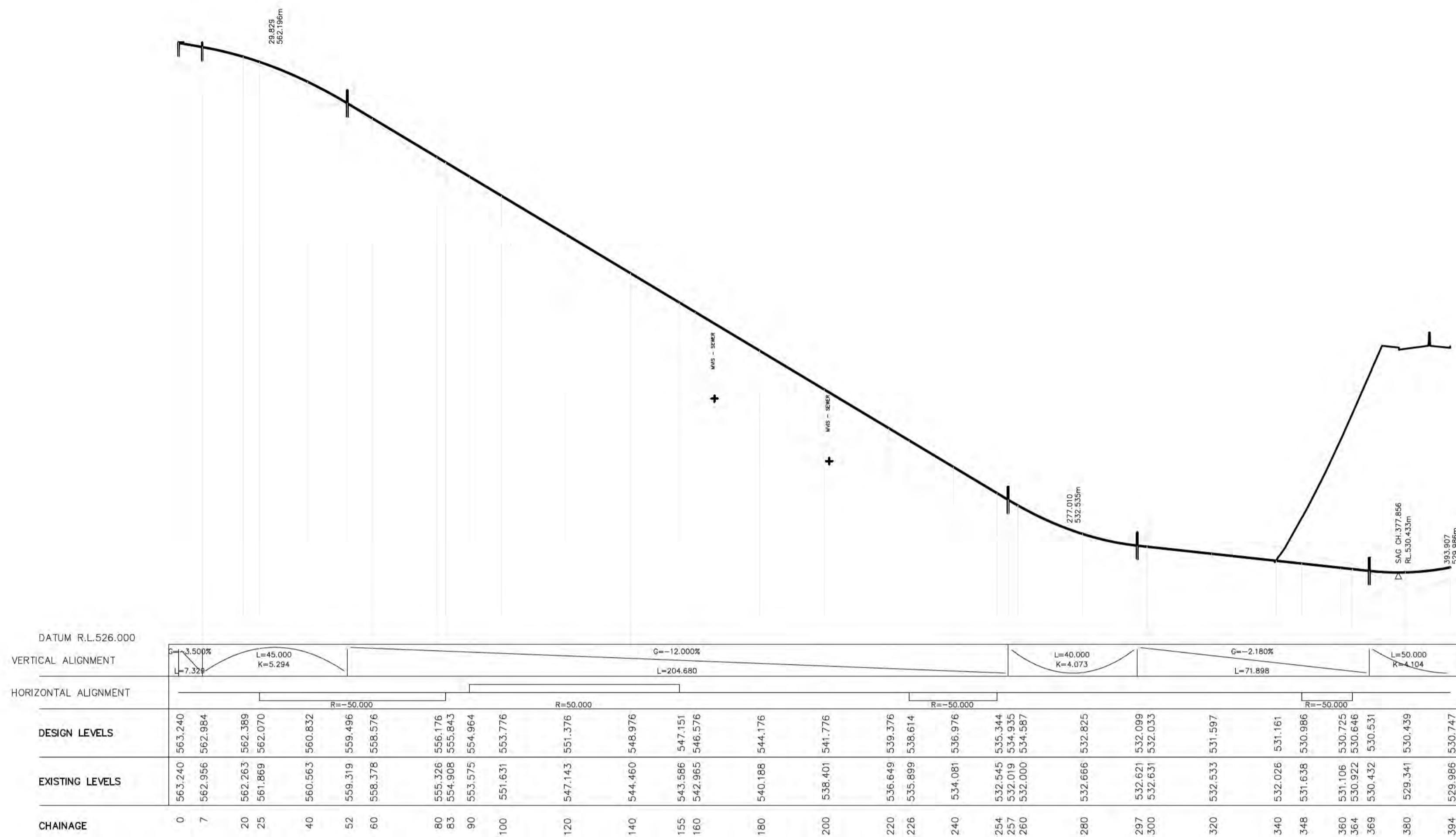
**INFORMATION DOCUMENT**

**3002754\_OCTOBER 2020\_MMW**



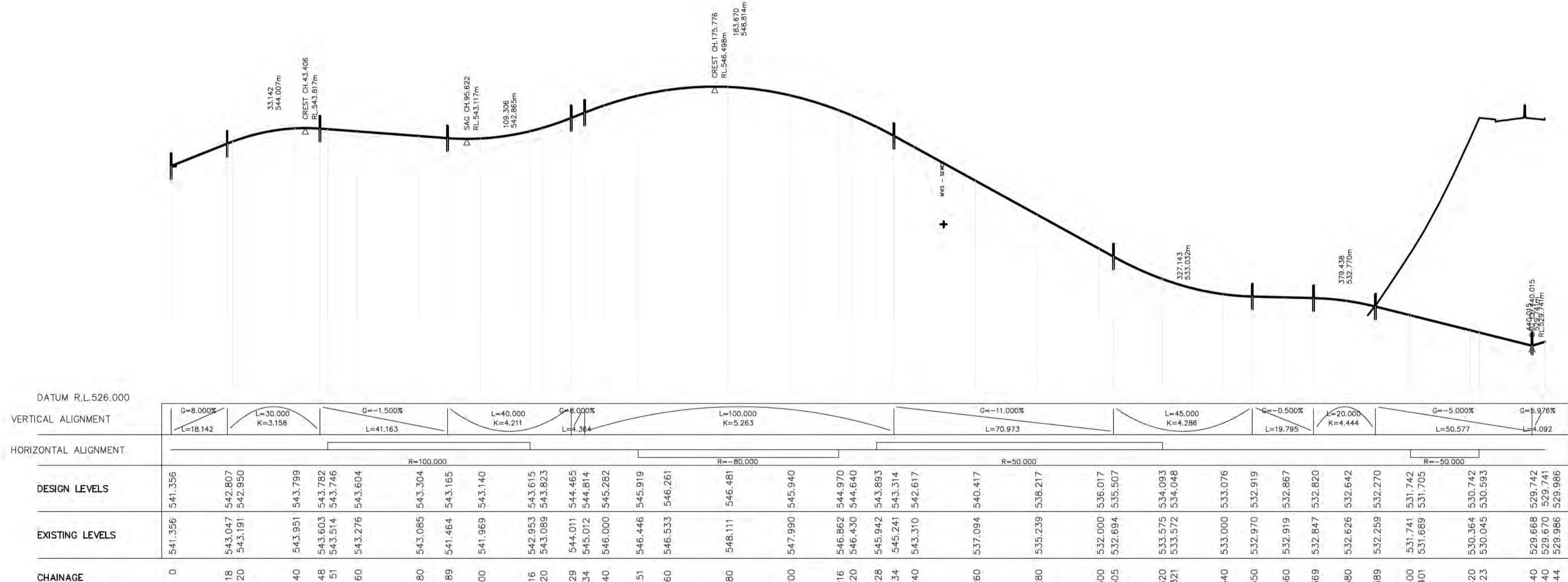
Member of the Surbana Jurong Group

© ABN 47 065 475 149  
SUITE 2, LEVEL 1, 243 NORTHBOURNE AVENUE  
LYNEHAM ACT 2602 AUSTRALIA



LONGITUDINAL SECTION ALONG CONTROL MCB BLUE

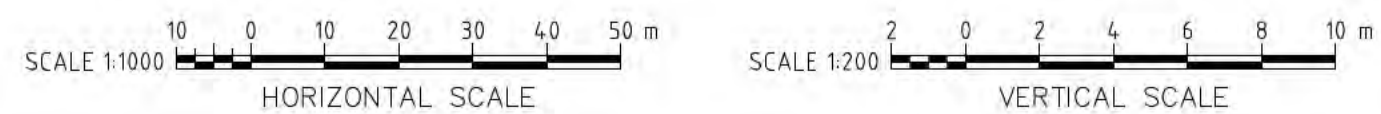
HORIZONTAL 1:1000  
VERTICAL 1:200



LONGITUDINAL SECTION ALONG CONTROL MCB GREEN

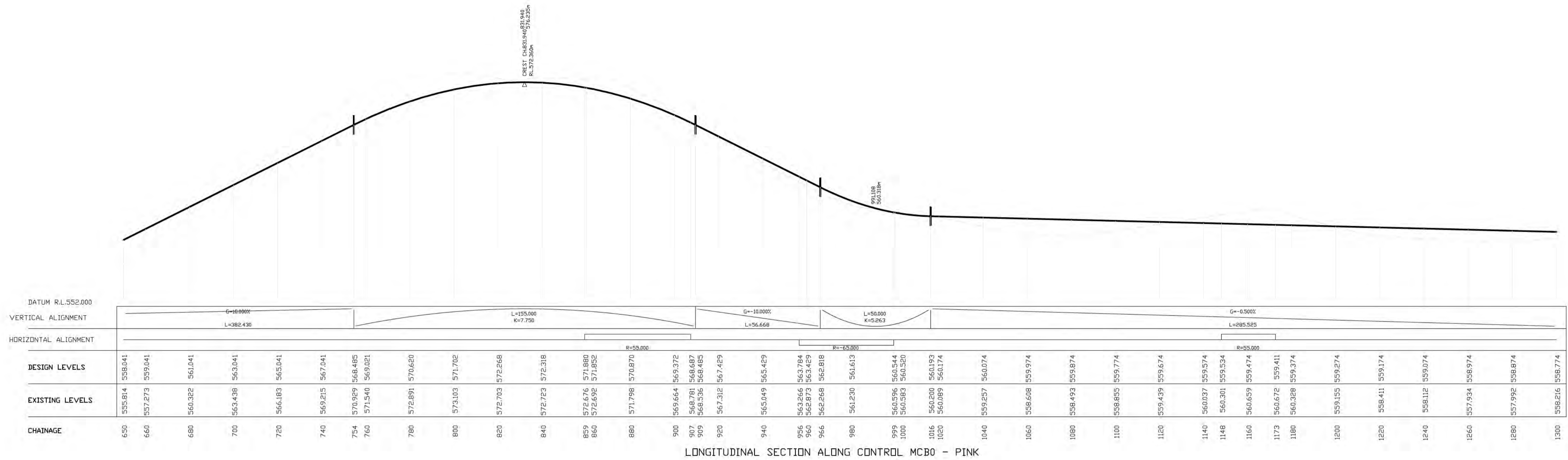
HORIZONTAL 1:1000  
VERTICAL 1:200

**NOT FOR CONSTRUCTION**

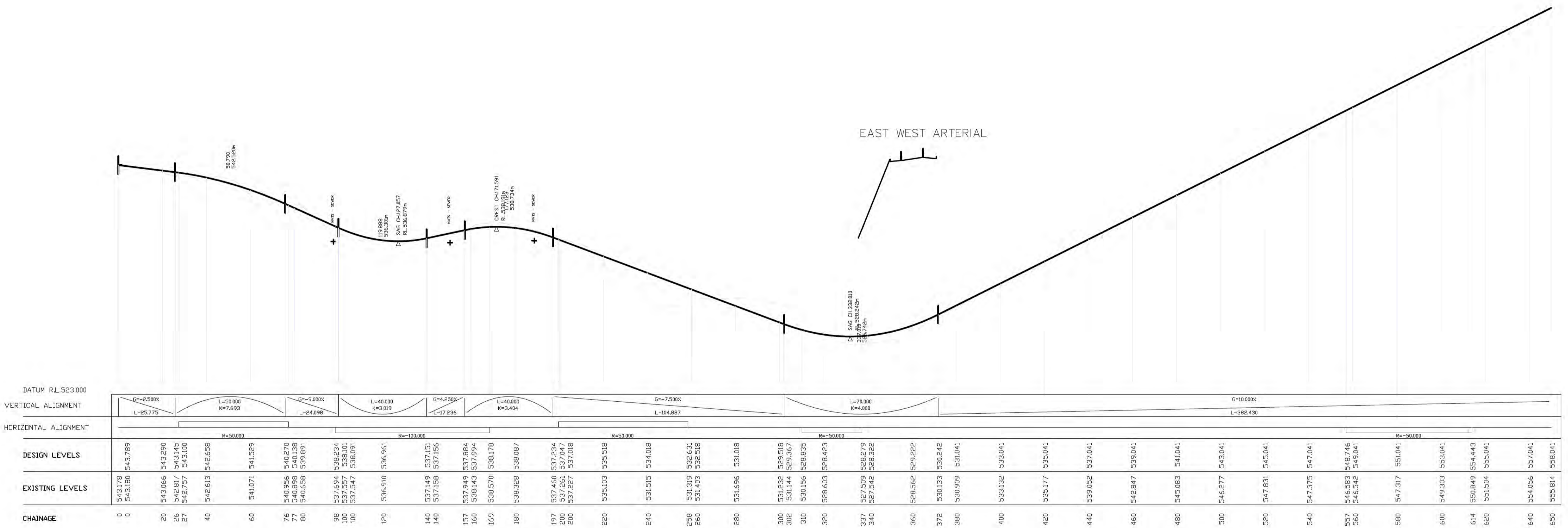


**EAST WEST ARTERIAL  
BOUNDARY ROAD - PROFILE GRADING OPTIONS**

**INFORMATION DOCUMENT  
3002754\_OCTOBER 2020\_MMW**

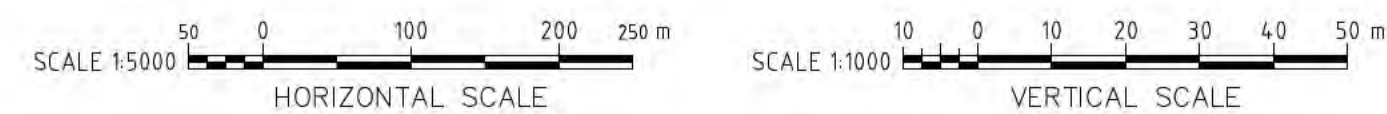


LONGITUDINAL SECTION ALONG CONTROL MCB0 - PINK



LONGITUDINAL SECTION ALONG CONTROL MCB0 - PINK

**NOT FOR CONSTRUCTION**



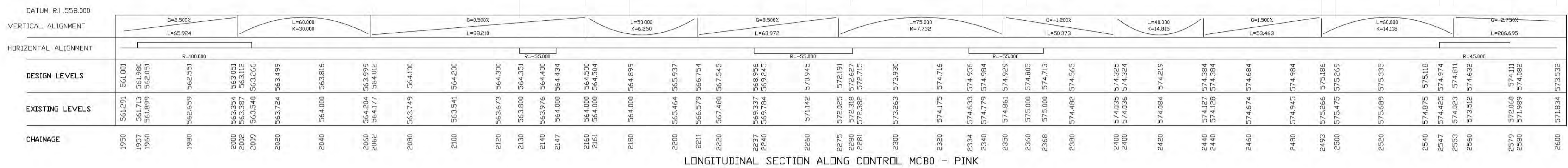
**EAST WEST ARTERIAL  
BOUNDARY ROAD - PROFILE PINK OPTION SH 1**

**INFORMATION DOCUMENT**

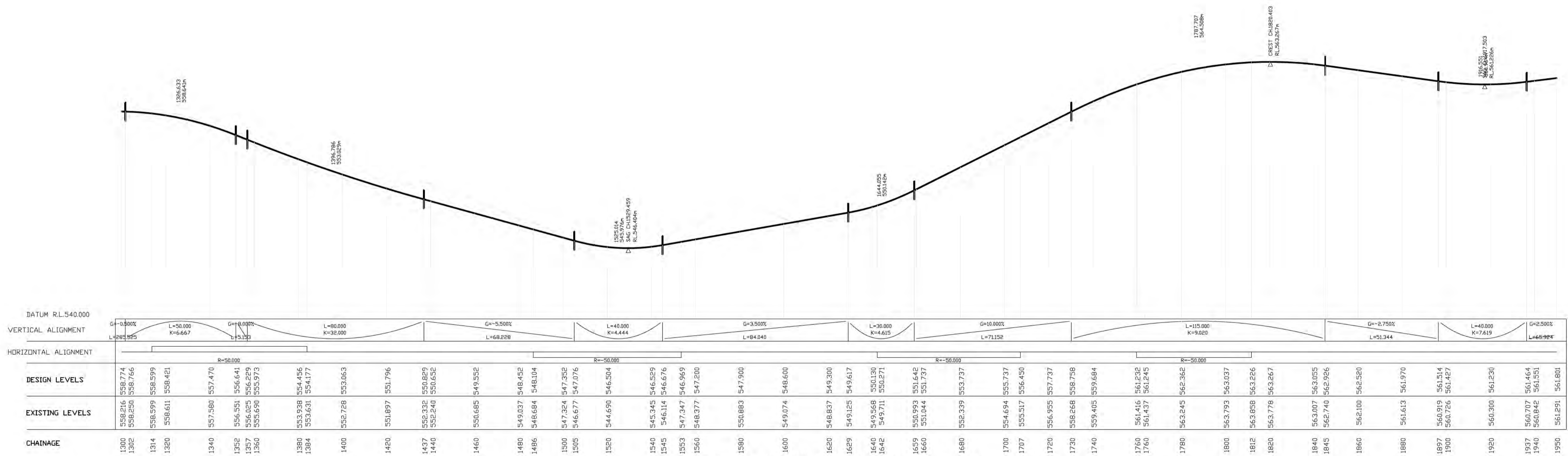
**3002754\_OCTOBER 2020\_MMW**



© ABN 47 065 475 149  
SUITE 2, LEVEL 1, 243 NORTHBOURNE AVENUE  
LYNEHAM ACT 2602 AUSTRALIA

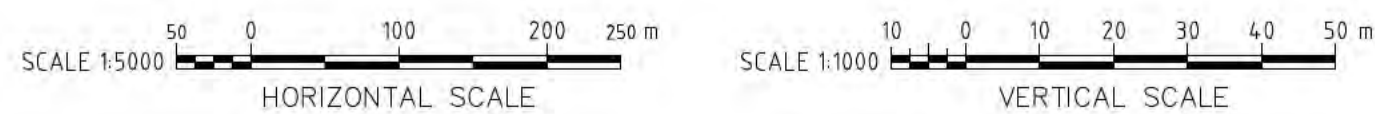


LONGITUDINAL SECTION ALONG CONTROL MCB0 - PINK



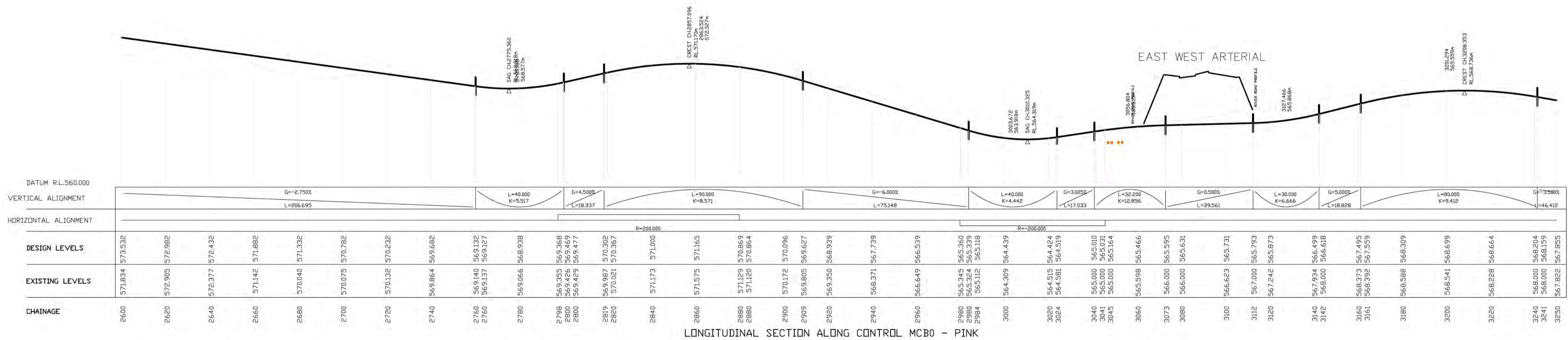
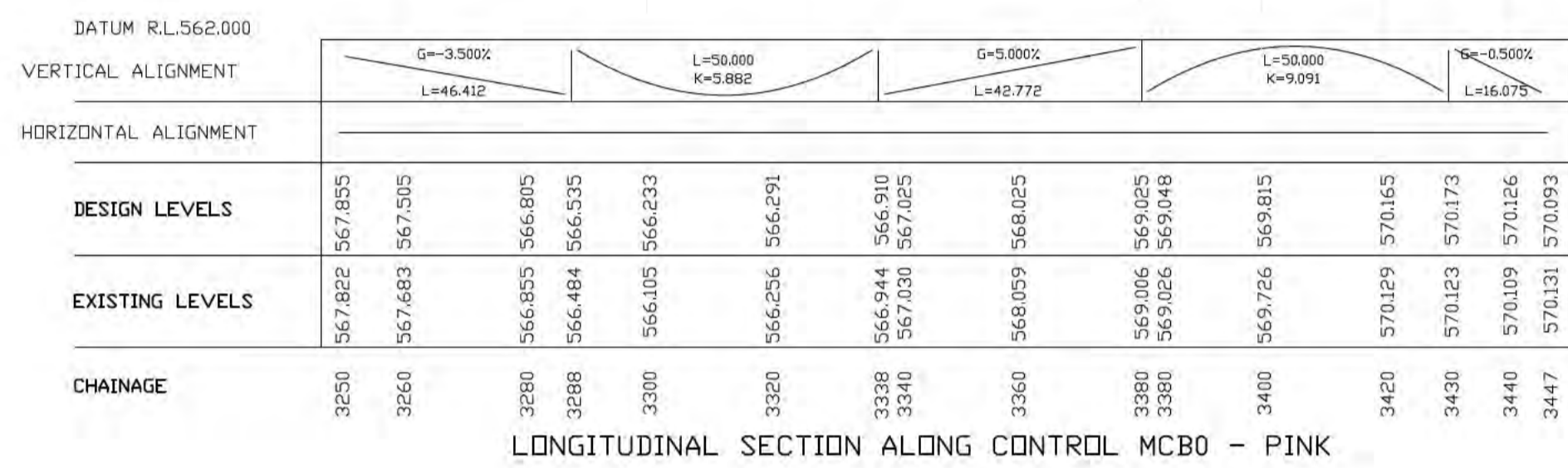
LONGITUDINAL SECTION ALONG CONTROL MCB0 - PINK

**NOT FOR CONSTRUCTION**

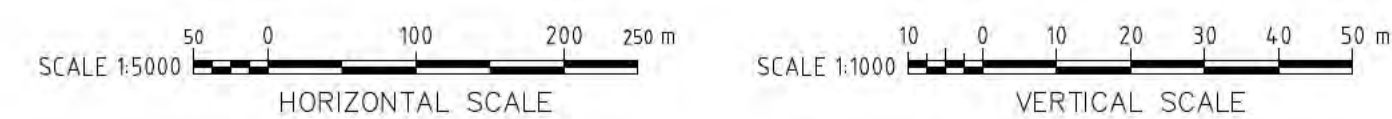


**EAST WEST ARTERIAL  
BOUNDARY ROAD - PROFILE PINK OPTION SH 2**

**INFORMATION DOCUMENT  
3002754\_OCTOBER 2020\_MMW**



**NOT FOR CONSTRUCTION**



**EAST WEST ARTERIAL  
BOUNDARY ROAD - PROFILE PINK OPTION SH 3**

**INFORMATION DOCUMENT  
3002754\_OCTOBER 2020\_MMW**