



ACT Heritage Council

## Entry to the ACT Heritage Register

*Heritage Act 2004*

### **20023. Reid Housing Precinct**

Sections 15-18, Sections 34 – 38, Section 39 Blocks 3 & 5, Section 40 Block 1 and adjacent road reservations bounded by Anzac Park, Limestone Avenue, Allambee Street, Currong Street, Coranderrk Street and Booroondara Street.

#### **REID**

This document has been prepared by the ACT Heritage Council.

This entry which was previously part of the old heritage places or the old heritage objects registers (as defined in the *Heritage Act 2004*), as the case may be, is taken to be registered under the *Heritage Act 2004*.

Conservation Requirements (including Specific Requirements), as defined under the *Heritage Act 2004*, that are contained within this document are taken to be Heritage Guidelines applying to this place or object, as the case may be.

Information restricted under *the old heritage places register or old heritage objects register* is restricted under the *Heritage Act 2004*.

**Contact:** ACT Heritage Council c/o Secretary PO Box 144 Lyneham ACT 2602  
**Enquiries:** phone 02 6207 7378 fax 02 6207 5715 e-mail [heritage@act.gov.au](mailto:heritage@act.gov.au)



environment ACT

Canberra Connect: 13 22 81  
Website : [www.cmd.act.gov.au](http://www.cmd.act.gov.au)

## 23. REID GARDEN CITY HERITAGE PRECINCT

### CONTENTS:

LOCATION:.....	3
FEATURES INTRINSIC TO THE HERITAGE SIGNIFICANCE OF THE PLACE.....	3
STATEMENT OF SIGNIFICANCE.....	4
FIGURE 1: CANBERRA’S EARLY GARDEN CITY PLANNED PRECINCTS.....	7
SPECIFIC REQUIREMENTS FOR THE CONSERVATION OF THE PRECINCT.....	8
1.0 CONSERVATION OF THE ‘GARDEN CITY’ SUBDIVISION AND URBAN INFRASTRUCTURE.....	9
Objective 1.1 - Road and Subdivision Patterns:.....	9
Objective 1.2 – Reserves, Parks and Street Trees:.....	9
Objective 1.3 – Original Street Furniture and Utility Services:.....	10
Objective 1.4 – New Street Furniture and Utility Services:.....	10
2.0 CONSERVING LANDSCAPE AND STREETSCAPE VALUES.....	11
Objective 2.1 - Siting, Setbacks and Garden Settings for all dwellings:.....	11
Objective 2.2 – Trees on Private Land:.....	13
Objective 2.3 – Verges:.....	13
Objective 2.4 - Verge Crossings and Driveways:.....	14
Objective 2.5 – Hedges and Front Gardens:.....	15
Objective 2.6 – Fences:.....	16
3.0 CONSERVING THE UNITY OF BUILT FORM WITHIN THE STREETSCAPE.....	17
Objective 3.1 - Unity of Built Form for all Dwellings:.....	17
Objective 3.2 - Garages and Carports for all residential blocks:.....	18
Objective 3.3 - New Architecture:.....	20
4.0 ADDITIONAL REQUIREMENTS FOR IDENTIFIED DWELLINGS – SEE FIGURE 2.....	20
Objective 4.1 – Form and Scale of Identified Dwellings:.....	20
Objective 4.2 – Architectural Character of Identified Dwellings:.....	21
Objective 4.3 – Community Buildings.....	22
5.0 DEMOLITION.....	22
Objective 5.1 – Preserving the Historical Integrity of the Precinct:.....	22
FIGURE 2: IDENTIFIED DWELLINGS, COMMUNITY BUILDINGS, RESERVES AND PARKS.....	24

## **LOCATION:**

District of Canberra Central , Division of Reid, Section 15 Blocks 1-15; Section 16 Blocks 1-10; Section 17 Blocks 1-10; Section 18 Blocks 1-14; Section 23 Blocks 1-22; Section 24 Blocks 1-22; Section 25 Blocks 1, 3-11; Section 26 Blocks 2 and 3; Section 27 Block 1; Section 28 Blocks 1-10; Section 29 Blocks 1-20; Section 30 Blocks 1-17; Section 31 Blocks 1-17; Section 34 Block 1; Section 35 Blocks 1-16, 19-24; Section 36 Blocks 1-22; Section 37 Blocks 1-20; Section 38 Blocks 1-20; Section 39 Blocks 3 and 5; Section 40 Block 1 and adjacent road reservation bounded by Anzac Park, Limestone Avenue, Allambee Street, Currong Street, Coranderrk Street and Booroondara Street as identified in Figure 23 and indicated on the Territory Plan Map by the Heritage Register Overlay at H23.

## **FEATURES INTRINSIC TO THE HERITAGE SIGNIFICANCE OF THE PLACE**

The features intrinsic to the heritage significance of the place and requiring conservation comprise:

- (1) An early C20th 'Garden City' planned subdivision including:**
  - (i)** road pattern - curvilinear symmetrical arrangement of streets and parks;
  - (ii)** hierarchical road pattern with wide arterial roads (Ainslie and Limestone Avenues and Anzac Parade) in an axial pattern around the perimeter of the subdivision, secondary curving streets within the subdivision and narrow width roads around internal reserves;
  - (iii)** central landscaped reserves with community facilities;
  - (iv)** symmetrical subdivision of blocks generated from the road pattern, including examples of tapered triangular blocks;
  - (v)** land use allocated to distinct uses to create an ordered and efficiently planned environment ie, residential, community, recreational and educational uses. Public buildings (Uniting Church) given special prominence in street planning and suburban layout;
  - (vi)** generous landscaped verges containing substantial street trees and footpaths;
  - (vii)** patterns of modest dwellings in a generous garden setting whereby the gardens enhance the streetscape and form a buffer of landscaped open space between adjacent dwellings;
  - (viii)** predominantly single storey detached dwellings with occasional semi-detached dwellings. Two storey semi-detached dwellings only introduced for reasons of economy;
  - (ix)** generally uniform front setbacks with occasional variations where one or two houses will have an increased setback to break the unity and create visual interest in the streetscape;
  - (x)** highly-ordered composition of dwellings, driveways and public space including dwellings sited centrally on blocks, parallel to the street and with entrance doorways facing the street. At street corners, dwellings are aligned to face the intersection point;
  - (xi)** dwellings with unifying architectural style, scale and materials;
  - (xii)** garages sited towards the rear of the block to deliberately down play the presence of a utilitarian structure in the streetscape and to give emphasis to the garden setting of each dwelling;
  - (xiii)** driveways along side boundaries generally sharing or 'pairing' the verge crossing with the neighbouring block;
  - (xiv)** public utility services removed from the streetscape and located underground or at the rear of blocks;
  - (xv)** unified landscape treatments and street furniture including verges, driveway materials, street trees, hedges, fences, street signs and lighting.

- (2) A distinct pattern of housing development and landscape demonstrating early Federal Capital planning philosophy for the provision of low-density public housing:**
  - (i) blocks and original cottage forms of equivalent size to accommodate a single socio-economic group of government employees - originally planned to provide rental accommodation for middle income public administrators.
- (3) The Federal Capital architectural style/character of the original public housing.**
  - (i) Federal Capital Commission (FCC) designs reflecting a mix of international styles and subtle variations of roof forms and materials including examples of rendered masonry construction with prominent gables;
  - (ii) Department of the Interior designs utilising pitched roof forms and red face brick exteriors;
  - (iii) Use of repetitive elements across designs including chimneys on gables and recessed and projecting porches.
- (4) Historic remnants of the original street furniture including street signs, fire hydrants and footpath lighting and other elements including kerbs and gutters.**
- (5) Mature public and private treescape of historic, aesthetic, natural and amenity values.**
- (6) Individual places of specific aesthetic, architectural, historical and social value as listed in Schedule 1.**

## **STATEMENT OF SIGNIFICANCE**

The Garden City heritage precincts of Alt Crescent, Barton, Blandfordia 5, Braddon, Corroboree Park, Forrest, Kingston/Griffith, Reid and Wakefield Gardens collectively and individually demonstrate the early principles of Garden City planning.

'Garden City' planning, in combination with American 'City Beautiful' principles, underpinned the initial planning of Canberra by the Federal Capital Advisory Committee (FCAC), Federal Capital Commission (FCC) and the Department of Interior (DOI) between 1920 and the Second World War.

The philosophy behind Garden City planning was to create healthy working and living environments for urban residents. It developed internationally through the 1900s and many of the principles were integral to Walter Burley Griffin's winning design for the new Federal Capital of Australia.

Garden City planning has evolved to become the basis of professional town planning practice, and Canberra as a whole reflects this progressive evolution. The key significance of the heritage precincts is their demonstration of Garden City characteristics that reflect aspects of the original Garden City philosophy.

Since the Second World War, Garden City planning has followed a continuous process of rationalisation to suit changing lifestyles. Key features such as the presence of central landscaped reserves overlooked by housing, the generous verge widths, generous block sizes and front setbacks and government supplied and maintained hedges have been lost or diminished.

The heritage precincts also demonstrate historical and social aspects of the detailed planning and construction of early Canberra by the FCAC, FCC and DOI. The delineation of suburbs/precincts into segregated socio-economic classes was a departure from the Garden City ideology of combining social classes together. As the date for the opening of the provisional parliament house was set for 1928, there was an urgent need to accommodate both government staff and workmen engaged in building city infrastructure and administrative facilities. A lack of private-sector interest and capability forced the government to construct the major portion of new housing within Canberra throughout the 1920-40 period.

The influences of early planning philosophy, including social segregation, and the urgent need for large public housing estates are reflected in the highly-ordered layout and aesthetic unity of the precincts. Blocks and dwellings within each precinct are of comparable size to accommodate government employees of a similar class and the dwellings are repetitions of a limited number of designs. In many instances the layout of buildings, fences and public landscaping for entire sections was planned and constructed as a single project. Large rear gardens reflect the planners' intention to provide opportunities for residents to grow fruit and vegetables in the face of critical shortages of locally available fresh produce.

The precincts demonstrate a mix of international architectural styles including 'Arts & Crafts', 'Federation', 'Interwar Californian Bungalow' and 'Interwar Georgian Revival', whilst reflecting the trend of the interwar period towards the subtle or minimal decoration as a precursor to Modernism and in contrast to the ornamentation of the previous Victorian and Federation periods.

The architectural character of the precincts is also valued for its high degree of aesthetic unity and demonstration of technical innovation in the design of low-density public housing subdivisions for the period. This includes the use of alternate exterior elevations on the same floor plan, the mirror reversing of floor plans, and the recurring use of architectural elements such as recessed porches or chimneys centrally located on a gable facade.

The limited number of remaining examples of privately-built housing from the original construction period are valued for their ability to reflect the comparable architectural and social values of the private sector or specific individuals during the period 1920-1940.

The landscape treatment of the precincts is also valued for its aesthetic unity. This emanates from the spatial treatment of landscape including setbacks providing for a generous garden setting and separation between dwellings, with garages at the rear of the block, and the unity in the existing grassed verges, hedges, and street trees.

The resultant composition of architectural and landscape elements form a cohesive streetscape that the community values.<sup>1</sup>

The retention and diversity of mature exotic and endemic trees on public and private land within the precincts enhances the concept of Canberra being a Garden City.

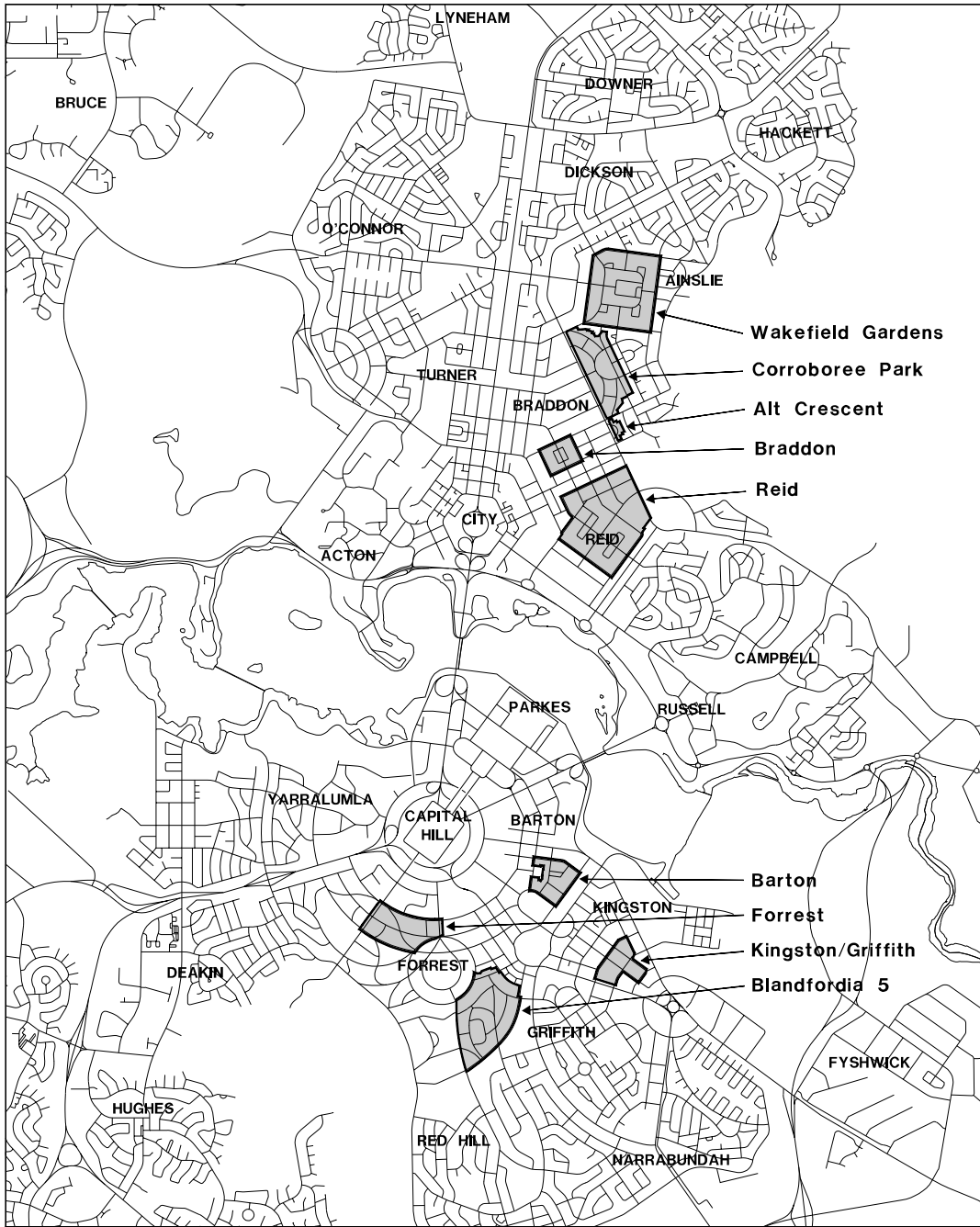
Additional values specific to the Reid Garden City heritage precinct are:

- The majority of the precinct was constructed in 1926 – 27 to meet the urgent need to provide housing for public servants prior to the opening of the provisional Parliament House in 1927.
- The suburb of Reid was named after the Australian politician Sir George Reid (1845-1918). Reid was the 4th Prime Minister of Australia.

- The Reid Pre-School, built in 1944 and opened in 1945, as a mothercraft centre provided a focal point for women living in the area and was developed through community interest and effort.
- The tennis courts and pavilion in Dirrawan Gardens formed a focal point for social life in the founding community of the newly established suburb of Reid.
- The Reid Uniting Church, built in 1927, was the first church built specifically for the new city of Canberra.
- The precinct contains privately built examples of the domestic architecture of Kenneth H Oliphant and other local architects. Oliphant was one of Canberra's first independent practising architects and his work has contributed notably to the urban architectural character of Canberra.
- The public domain landscape was directed by Thomas Charles Weston who was Canberra's first Superintendent of Parks and Gardens. The species used are typical of Weston's choice of planting for Canberra.

<sup>1</sup>Industry Representatives, precinct residents and the general community were invited to attend one of a series of consultation workshops held during October 2000 to discuss proposed revisions to the conservation objectives and development controls for the Precincts. During these workshops all participants agreed that the Precincts had special values that should be conserved.

**Figure 1: Canberra's Early Garden City Planned Precincts**



## SPECIFIC REQUIREMENTS FOR THE CONSERVATION OF THE PRECINCT

In accordance with s54(1) of the *Land (Planning and Environment) Act 1991*, a series of specific requirements have been identified to implement conservation objectives to ensure the retention of the heritage significance of the place.

### Intent:

To retain and conserve the intrinsic features of the precinct:

- for their ability to demonstrate historical values including ‘Garden City’ planning principles and architectural and landscape design from the initial period of urban development within Canberra;
  - for the aesthetic unity of the streetscapes arising from the harmonious integration of low-density built forms within a mature landscape setting, and high proportion of landscape space and trees; and
  - for the social values associated with the retention of communal landscaped reserves and community facilities,
- whilst managing change to meet the contemporary requirements of residential usage.

The following interpretations shall apply in respect of the inclusion of ‘shall’ and ‘should’ within these Specific Requirements:

‘shall’ the requirement is mandatory and must be complied with in any development or action post-dating gazettal of this Register.

‘should’ the requirement represents the Heritage Council’s interpretation of how a development may fulfil the relevant objective in a manner that is consistent with the conservation of the heritage values identified in the statement of significance and intrinsic features. The Authority shall have discretion to accept an alternate solution subject to the applicant demonstrating to the satisfaction of the Authority that:

- the alternative solution fulfils the relevant conservation objective without risk of adverse impact upon the heritage values, and
- the alternative solution provides a high quality outcome which is comparable to the outcome that would be achieved by directly complying with the relevant requirement, or
- the alternative is necessary to address public health and safety concerns.



**1.0 CONSERVATION OF THE 'GARDEN CITY' SUBDIVISION AND URBAN INFRASTRUCTURE**

**Objective 1.1 - Road and Subdivision Patterns:**

To conserve the existing original road hierarchy and layout, pedestrian circulation patterns and subdivision layout.

**Mandatory Requirements**

**1.1a** Blocks shall retain the visual characteristics of the original development when viewed from the street or adjacent public domain ie. a single detached dwelling or duplex.

**Requirements subject to the discretion of the Authority**

**1.1b** Roads should retain their current alignments and widths and should remain bitumen or asphalt sealed. Kerbs should remain of 'upright' design. Kerbs and gutters should retain their current alignments and should be concrete.

**1.1c** New traffic calming and other road and traffic control devices should be designed to minimise disruption to the original street pattern, and the installation of raised humps or islands should be avoided.

**1.1d** Original footpath alignments and widths should be retained. Surfacing treatments should be consistent throughout the precinct.

**1.1e** Original traffic islands should be retained and maintained in their current locations. Preferred surface treatments are gravel, pebble or grass and the practice of planting low shrubs and flowering plants in traffic islands should be continued.

**Objective 1.2 – Reserves, Parks and Street Trees:**

To conserve landscaped reserves and parks, and to conserve and reinforce the historical pattern of street trees consistent with early Garden City principles and contemporary social values.

**Mandatory Requirements**

**1.2a**

The Dirrawan and Geerilong Gardens internal reserves (Sections 26, 27, 34 and 40) shall remain urban open space and may include the provision of recreation and community facilities. New recreation and community facilities shall only be permitted where they are consistent with a Conservation Management Plan that has been endorsed by the ACT Heritage Council.

**1.2b**

The Reid Park Sports Ground at Section 39 shall remain urban open space and may include the provision of recreation and community facilities and municipal depots. New recreation and community facilities shall only be permitted where consistent with a Conservation Management Plan for Reid Park that has been endorsed by the ACT Heritage Council.

**1.2c**

Trees shall be protected during development. Vehicles, equipment and materials shall not be parked or stored within the drip line of trees or on the reserve or parks.

**Requirements subject to the discretion of the Authority**

- 1.2d** Where trees occur in an historical formal arrangement, the original alignments, spacings and species (including patterns of species variation) should be retained, with trees being replaced where missing or in a declining or hazardous condition.
- 1.2e** Where trees occur without a definable arrangement or pattern, the general character of the planting should be conserved where it enhances the landscape character of the precinct.
- 1.2f** 'Environmental Weeds' or pre-1940 trees where the species has not proven suited to the location may be replaced with an alternate species. Replacement species should, at maturity, be of similar size, shape and habit to the original.
- 1.2g** Non-original trees that do not complement the pre-1940 species or patterns should be removed.

**Objective 1.3 – Original Street Furniture and Utility Services:**

To ensure that remaining examples of street furniture (including bus shelters and seats, street signs, footpath lighting and fire hydrants) and brick gutters dating from the period 1920 - 1940 are retained and conserved *in situ*.

**Requirements subject to the discretion of the Authority**

- 1.3a** Remaining examples of street furniture from the period 1920-1940 should be retained and conserved *in situ*. Modifications to retain ongoing functional use, eg: the inclusion of reflective street nameplates on original precast signposts, may be permitted.

**Objective 1.4 – New Street Furniture and Utility Services:**

To ensure that the design of new street furniture and utility services is complementary with remaining examples of street furniture from the period 1920-1940, and that it is of a uniform appearance that is sympathetic to the streetscape character of the precinct.

**Requirements subject to the discretion of the Authority**

- 1.4a** The design, scale and location of new or replacement street signs and footpath lighting should complement the design, scale and location of original street furniture and the streetscape character.
- 1.4b** The design and location of new fire hydrants, road lighting or any other new street furniture should complement the streetscape character.
- 1.4c** Traffic signage should be kept to an essential minimum.
- 1.4d** New street furniture or utility services should not require the removal or detrimental pruning of trees within verges, parkland and reserves.
- 1.4e** New utility services should be incorporated along existing overhead routes or be routed underground in a manner that does not impact on built or major landscape elements.
- 1.4f** Existing installations of overhead utility services within verges or forward of average building lines should progressively be removed.

## 2.0 CONSERVING LANDSCAPE AND STREETScape VALUES

### **Objective 2.1 - Siting, Setbacks and Garden Settings for all dwellings:**

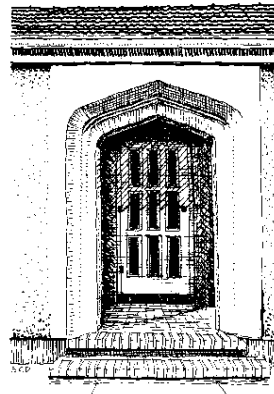
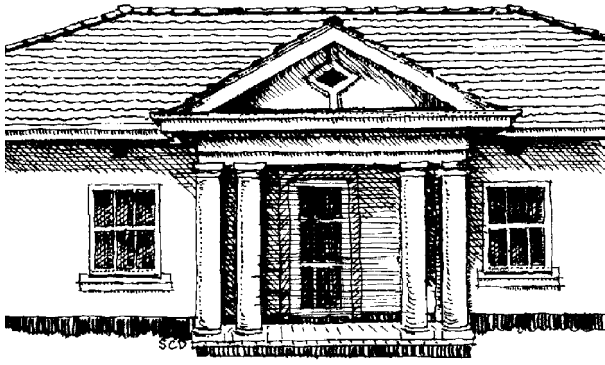
To conserve and reinstate the historical arrangement of dwellings across the precinct and the provision of a generous garden setting for each dwelling.

### **Mandatory Requirements**

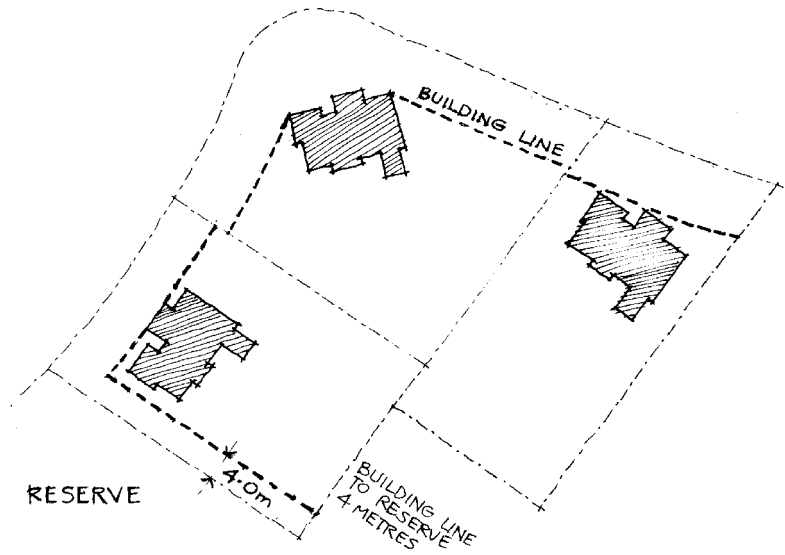
- 2.1a** Development shall not preclude any current or future provision of vehicle accommodation behind the building line.
- 2.1b** Additions to dwellings or the construction of new dwellings, buildings or structures shall not be permitted closer to a front boundary than the original building line, irrespective of existing encroachments.
- 2.1c** Side setbacks for dwellings shall be not less than 1.8 metres and at least 4.8 metres in combined total. For semi-detached dwellings having a shared party wall on a side boundary (eg. a duplex), the side setback to the other side boundary shall be a minimum of 3 metres.
- 2.1d** Site coverage of built development (including the area of any dwelling, garage, carport, outbuilding or other roofed area but excluding driveways and unroofed paved areas) on a residential block shall not exceed 27.5% of the area of the block.
- 2.1e** Not less than 40% of the area of a residential block shall be retained as planting area. Planting area means an area of land within a block that is not covered by buildings, vehicle parking and manoeuvring areas of any other form of impermeable surface and that is available for landscape planting.

### **Requirements subject to the discretion of the Authority**

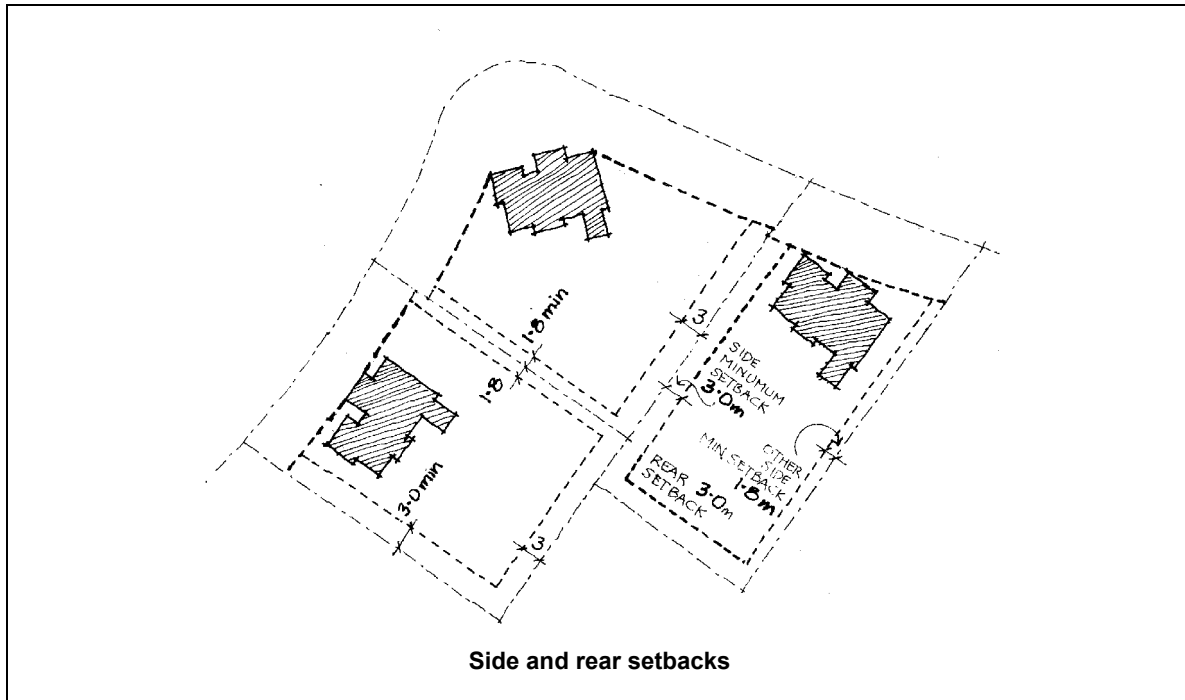
- 2.1f** The original alignment of each dwelling should be retained (eg: main elevation parallel or perpendicular to the street, or angled across the block to face an intersection).
- 2.1g** The original attributes of the point of entry to the original dwelling should be retained (eg: entry facing the street, entry integrated within a central covered porch).
- 2.1h** Where a dwelling clearly demonstrates a breach of the predominant original building line in the street, additions to or new construction that encroaches to the predominant original building line may be permitted, except where the variation to the building line is determined to have been a feature of the original planned layout of the precinct subdivision.
- 2.1i** For blocks adjacent to a public reserve or public pedestrian way, the building line along that boundary should be not less than 4 metres from the boundary.



Examples of original entry attributes



Examples of building lines



**Objective 2.2 – Trees on Private Land:**

To perpetuate the long term retention of trees on private land to complement tree management on public land within the precinct. (Requirements for the conservation of trees on public land can be found at 1.2).

**Mandatory Requirements**

**2.2a** Trees or shrubs over 6 metres tall shall not be removed from leased land without the consent of the Authority and only where in accordance with approval criteria included in relevant tree protection legislation operating in the Territory.

**Requirements subject to the discretion of the Authority**

**2.2b** Where the removal of a tree is approved a replacement tree, of stock and species common or sympathetic to the precinct, should be introduced at an approved location within the block, unless existing planting is considered to be adequate in terms of its quantity and location.

**Objective 2.3 – Verges:**

To retain the broad grassed verges that are complemented by the patterns of street trees, and form a landscaped foreground to the precinct subdivision.

**Mandatory Requirements**

**2.3a** Verges shall be retained at their current widths and remain grassed.

**2.3b** The introduction of new paving shall not be permitted unless, in the opinion of the Authority, the paving is essential for pedestrian or vehicular safety, public transport, or to restore or maintain an original pathway or driveway.

**2.3c** The introduction of trees or shrubs or any form of planting that detract from the open character of the verge shall not be permitted, excluding approved street trees.

**2.3d** Verges shall not be used for the long term parking of vehicles, trailers or other equipment or for the storage of building and landscaping materials or garden refuse.

**Objective 2.4 - Verge Crossings and Driveways:**

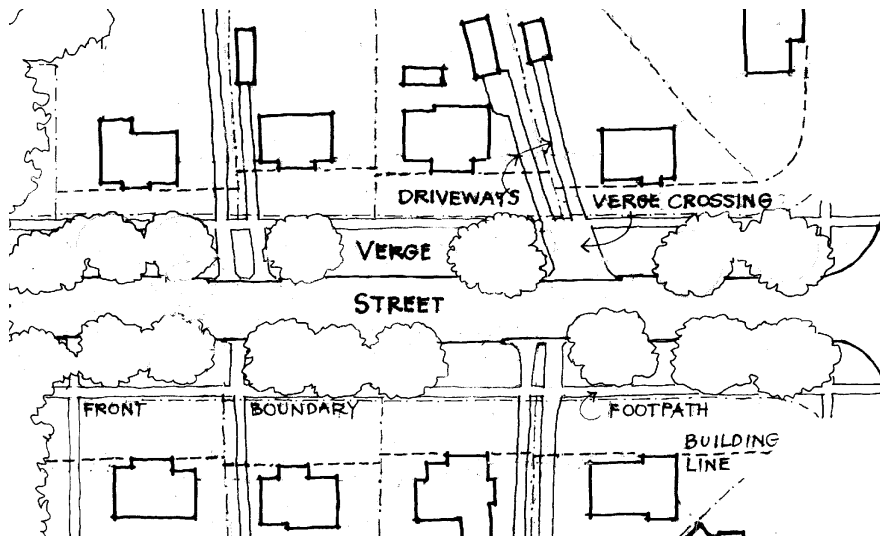
To retain the original pattern and appearance of verge crossings, and minimise the visual prominence of driveways within the streetscape.

**Mandatory Requirements**

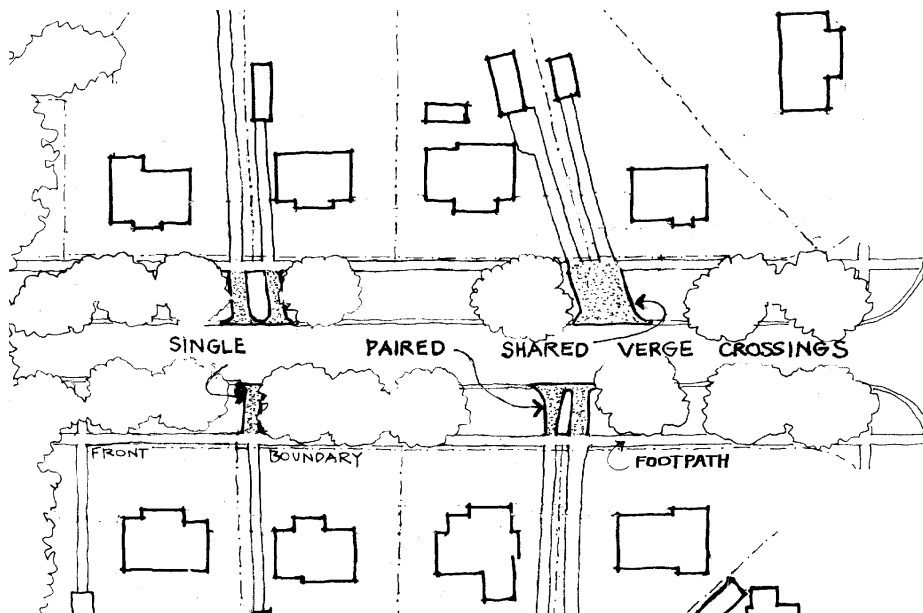
- 2.4a** Shared or paired verge crossings shall be conserved in their original locations and width.
- 2.4b** Not more than one verge crossing shall be permitted where blocks have a single frontage.
- 2.4c** Driveways shall conform to the verge crossing location with an alignment close to the nearest side boundary.
- 2.4d** Strong textures including stamped concrete, and bright colours including bare or exposed aggregate concrete shall not be permitted on driveways or verge crossings.

**Requirements subject to the discretion of the Authority**

- 2.4e** Single verge crossings may be relocated where :
- The existing verge crossing is to be reinstated to its original location, or
  - in the opinion of the Authority, the street on which the verge crossing is located does not have a prevailing pattern that will be adversely affected by the relocation, and
  - the relocated verge crossing will not have an adverse impact on street trees, and
  - the relocated verge crossing will retain the original width, kerb detailing and proximity to a side boundary of the original, and
  - the original verge crossing location will be planted with grass and the kerb reinstated.
- 2.4f** For blocks with two street frontages or with a street frontage along Limestone Avenue, a second verge crossing may be permitted where:
- the new verge crossing will not have an adverse impact on street trees, and
  - the new verge crossing will retain the original width, kerb detailing and proximity to a side boundary of the original, and
  - any driveway connecting the two verge crossings is screened by planting.
- 2.4g** Driveways should integrate with front garden planting to reduce the visibility of the driveway from the street.
- 2.4h** Driveways should be a single-vehicle width (<3.6m) between the front boundary and building line and have a uniform surface of subdued charcoal or earthen tones. Gravel, brick, clay or concrete pavers or bitumen are preferred surface finishes.
- 2.4i** Verge crossings should have a bitumen surface. Where existing verge crossings are surfaced in a material other than bitumen opportunities for replacement should be sought. Where required, the replacement of existing bitumen verge crossings with new bitumen is encouraged.



Verges, verge crossings and driveways



Single, shared and paired verge crossings

**Objective 2.5 – Hedges and Front Gardens:**

To conserve the original hedge patterns separating public from private domain and 'framing' the view of each dwelling and its front garden.

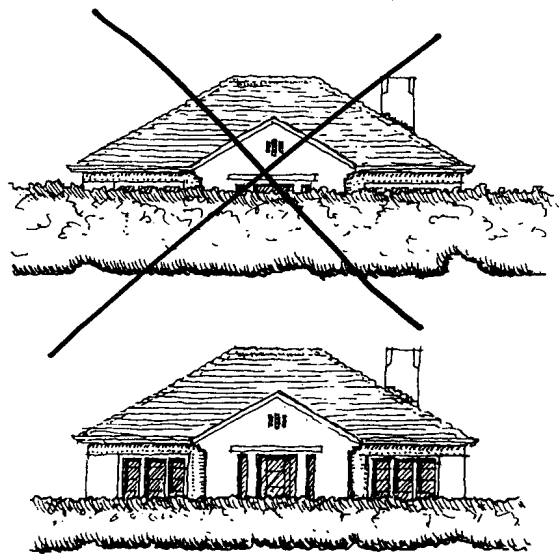
**Mandatory Requirements**

**2.5a** Hedges shall be retained at existing locations.

**Requirements subject to the discretion of the Authority**

**2.5b** The planting of hedges along front boundaries and along side boundaries forward of the building line, and the maintenance of hedges to heights of not more than 1200mm is encouraged.

- 2.5c** Replacement or new hedge species should be evergreen and of appropriate scale and shape to form a border of typically not more than 1200mm in height.
- 2.5d** Existing hedges of species that are 'Environmental Weeds' should be replaced.
- 2.5e** A composition of soft landscaping should be retained between the building line and the front boundary. Soft landscaping may include trees, shrubs, grass and garden beds. Hard surfacing, other than for pathways and driveways, should be avoided.
- 2.5f** Retaining walls or earth mounding visible to the street should only occur where they will not have an adverse impact on the streetscape character.



Hedges should not hide the contribution of the dwelling to the streetscape

**Objective 2.6 – Fences:**

To re-establish unified fence patterns including heights, locations and materials.

**Mandatory Requirements**

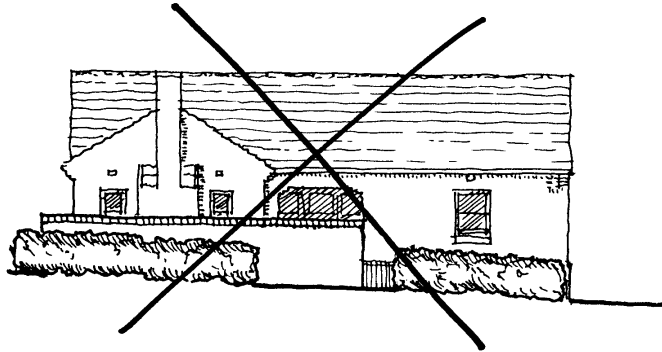
- 2.6a** Fences, courtyard walls and vehicular gates shall not be permitted closer to the street than the building line.
- 2.6b** Colour bonded steel and other sheet metal fencing and masonry walls shall not be approved for fences and gates between buildings and side boundaries or at any location visible to the street or adjacent public domain.

**Requirements subject to the discretion of the Authority**

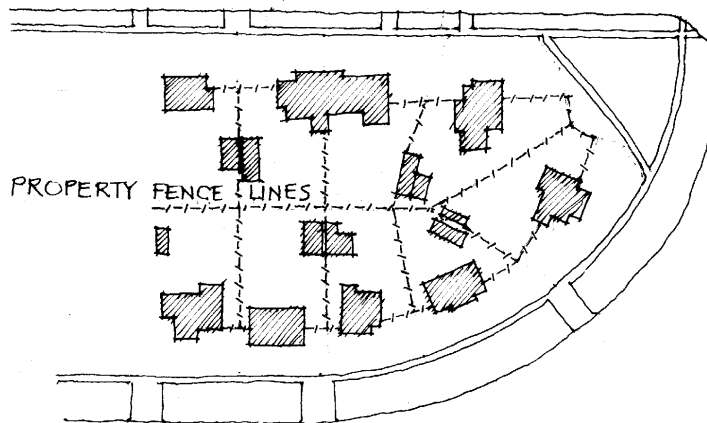
- 2.6c** Pedestrian gates or driveway pillars forward of the building line should only be permitted where they are integrated with hedge planting and are less than 1200mm in height above natural ground level.
- 2.6d** Fences and gates between buildings and side boundaries should be:
- set at least 0.6m behind the building line; and
  - less than or equal to 1.8m in height above natural ground level; and
  - timber paling, timber lattice, brush, open mesh or metal railing.



- 2.6e** Side and rear boundary fences and gates should:
- not extend forward of the building line;
  - be less than or equal to 1.8metres above ground level; and
  - be timber paling, timber lattice, brush or open mesh metal railing.



**Courtyard walls obscure the contribution of the dwelling to the streetscape**



**Examples of original fence lines**

### **3.0 CONSERVING THE UNITY OF BUILT FORM WITHIN THE STREETScape**

#### **Objective 3.1 - Unity of Built Form for all Dwellings:**

To conserve the unity of built form within the streetscape by ensuring that additions to existing dwellings and new dwellings that are visible from the street or adjacent public domain, reflect and complement the scale, form, and materials of the identified original dwellings in the street.

#### **Mandatory Requirements**

- 3.1a** Two-storey development shall not be approved except where the original dwelling was of two storey design. Where existing two-storey additions were not a part of the original dwelling, further two-storey additions shall not be approved.
- 3.1b** The level (RL) of the ridgeline or highest roof point of any development shall not exceed the level of the ridgeline or highest roof point of the original dwelling.
- 3.1c** Additions shall have a finished floor level not in excess of 1.8 metres above natural ground level.

**3.1d** The roof form, roof pitch, wall and roof materials, eaves overhang and height-to-width ratio of windows within any new construction visible from the street or adjacent public domain shall complement the architectural character of the original dwellings in the street. Applied finishes to the roof of the dwellings shall complement the roof colours of original dwellings in the street.

**3.1e** The form of any roof projection or opening, where permitted, shall complement the original roof form and architectural character of the dwelling.

**Requirements subject to the discretion of the Authority**

**3.1f** Dwellings may include attics provided they will not be apparent from the street or adjacent public domain.

**3.1g** Alterations and additions should be sited to retain the visual characteristics of the original development when viewed from the street or adjacent public domain ie. single detached dwelling or duplex.

**Objective 3.2 - Garages and Carports for all residential blocks:**

To retain the historical pattern of garages sited towards the rear of the block, where they are not visually prominent in the streetscape and the form of the original dwelling is not impacted by the inclusion of a garage under the dwelling roof form.

**Mandatory Requirements**

**3.2a** Entries to basement parking shall only be permitted where the structural stability of the dwelling is assured, the entry and ramp are not prominent in the streetscape, and the top of a decline does not come forward of the dwelling.

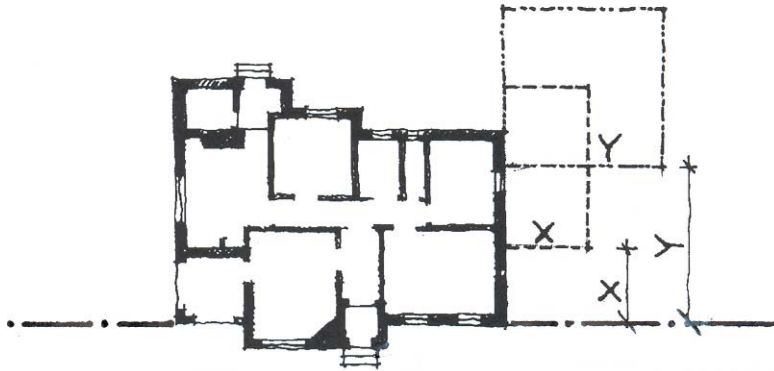
**3.2b** No more than the equivalent of a double garage or a double width carport shall be visible to the street. Garage doors visible to the street shall be of a single car width.

**Requirements subject to the discretion of the Authority**

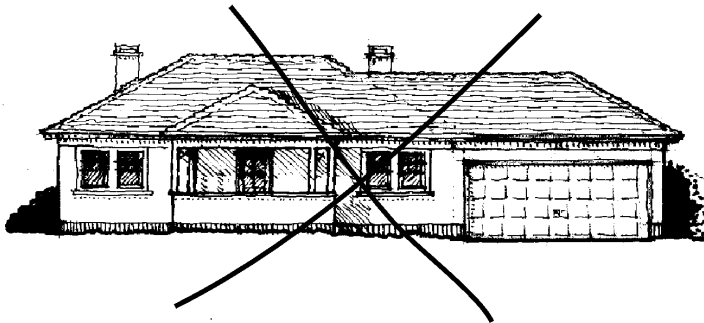
**3.2c** New garages or carports should be sited on or adjacent to the site of the original garage, otherwise new garages or carports should:

- utilise the original driveway, and
- retain a setback from a side boundary not less than the original garage and be no closer than 1.5 metres to a garage, carport or outbuilding on an adjacent block, and
- where located within 2 metres of a side boundary, have a wall height along the side closest to the boundary that is less than 3 metres above natural ground, and
- be set back from the nearest front face of the dwelling toward the rear of the block a minimum distance equal to the external width of the proposed garage or carport (refer XY diagram), and
- have a ridge height lower than the existing dwelling and a roof form that appears separate from the main form of the dwelling; and
- utilise scale, form, details and materials that complement the original dwelling.

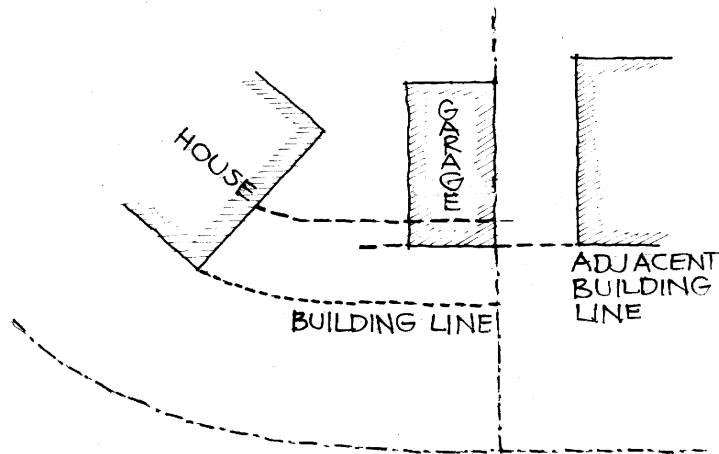
- 3.2d** Where a block has two street frontages, the setback of the new garage or carport from the front face of the dwelling may be reduced provided:
- the roof form of the garage or carport remains separate from that of the main dwelling,
  - the garage or carport is not to extend forward of the front face of the dwelling, and
  - the garage or carport is not to conflict visually with the alignment of the buildings on adjoining properties.



**New garages and carports should be set back a minimum distance equal to their width from the nearest front face of the dwelling**



**Incorporating a garage under the roof line alters the form and scale of the dwelling**



Where a block has two street frontages the setback from the front face of the dwelling may be reduced. The garage or carport should not extend forward of the front face of the dwelling and should respect the building line of the adjacent dwelling.

### Objective 3.3 - New Architecture:

To enable contemporary architectural expression where additions are not visible from the street or adjacent public domain.

### Requirements subject to the discretion of the Authority

- 3.3a** Additions that vary in architectural style to that of the original dwelling may be permitted on individual merit only where:
- the additions are detached or have minimal attachment to the original dwelling; and
  - the design, scale and materials of the additions are subordinate to the form of the original dwelling, and
  - the additions are not visible when viewed from the street or adjacent public domain; and
  - the design is of high quality and complements the architectural character of the precinct.

## 4.0 ADDITIONAL REQUIREMENTS FOR IDENTIFIED DWELLINGS – See Figure 2

### Objective 4.1 – Form and Scale of Identified Dwellings:

To maintain the form of the identified dwelling as the dominant built form on the block when viewed from the street or adjacent public domain.

### Mandatory Requirements

- 4.1a** External alterations and additions shall only be permitted to the front of a dwelling where:
- the alterations or additions will reinstate the original façade and details thereof, and/or,
  - the alteration is to a previous unsympathetic addition and will enhance the streetscape character.
- 4.1b** Subject to 4.1e below, additions to a side of a dwelling shall be set at least 1.8 metres toward the rear of the block from the nearest front face of the original dwelling.

**4.1c** The enclosure of original unenclosed front porches or verandahs shall not be permitted.

**4.1d** The original roof shall not be replaced with an alternate form.

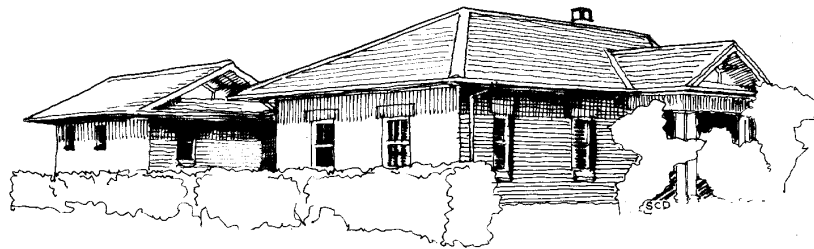
**Requirements subject to the discretion of the Authority**

**4.1e** For blocks with two street frontages or a front boundary adjoining a public reserve or pedestrian way, additions to one side elevation may occur with a reduced setback provided the apparent form of the original dwelling is retained.

**4.1f** Additions to dwellings should be designed to minimise disturbance to the form of the identified dwelling. Wall articulation and roof form should complement the identified dwelling. The addition of singular roof forms larger than the original roof should be avoided.

**4.1g** The restoration of any enclosed porches and verandahs to their original open design should be encouraged.

**4.1h** The restoration of non-original roofs to their original form should be encouraged.



**Additions should minimise the disturbance to the roof form of the dwelling.**

**Objective 4.2 – Architectural Character of Identified Dwellings:**

To retain the architectural character of identified dwellings.

**Mandatory Requirements**

**4.2a** The painting or rendering of face brick dwellings shall not be permitted. The removal of render from dwellings that were originally rendered shall not be permitted other than where render is being repaired.

**4.2b** Applied finishes to the tiled roof of an identified dwelling shall retain the original roof colour. Applied finishes to the metal roof of an identified dwelling shall complement the roof colours of original dwellings in the street.

**4.2c** Roof elements such as skylights, solar hot water heaters, air-conditioners and telecommunications masts or dishes shall be sited to minimise visibility from the street or adjacent public domain.

**Requirements subject to the discretion of the Authority**

**4.2d** Alterations and additions that will be visible from the street or adjacent public domain should match the original details, materials and finishes for key elements including roofing and ridge capping; gutters and downpipes; fascias and eaves; wall finishes and decorative treatments; windows including fenestration patterns; entrance doors; and verandah joinery. Details, materials and finishes at locations not visible to the adjacent public domain should complement the original.

4.2e	Identified weatherboard-clad dwellings and mixed fibre-cement and weatherboard-clad dwellings should retain their original exterior claddings. Replacement claddings should match the profile, material and finish of the original dwelling.
4.2f	Applied finishes to external walls should be coloured off-white or be of subtle, earthy tones that complement the streetscape.
4.2g	Chimneys visible from the street or adjacent public domain should be retained. New chimneys visible from the street or public domain should match the original proportions, finishes and capping detail.
<p><b>Objective 4.3 – Community Buildings</b> To ensure community facilities are consistent with the streetscape character of the precinct.</p>	
<p><b>Mandatory Requirements</b></p> <p>4.3a Alterations and additions to community buildings identified on Figure 2 shall be sympathetic to the streetscape character of the precinct and the form and scale of the existing buildings.</p> <p><b>Requirements subject to the discretion of the Authority</b></p> <p>4.3b The landscape setting of the identified community buildings, including spatial relationships between the built form and the landscape, and formal patterns of hard landscaping that contribute to the streetscape and landscape character of the precinct should be conserved.</p> <p>Reid Uniting Church: refer to Heritage Places Register entry No 35.</p>	
<p><b>5.0 DEMOLITION</b></p>	
<p><b>Objective 5.1 – Preserving the Historical Integrity of the Precinct:</b> To retain original dwellings.</p>	
<p><b>Mandatory Requirements</b></p> <p>5.1a The total demolition of identified dwellings shall not be permitted except in exceptional circumstances, including:</p> <ul style="list-style-type: none"> <li>• the dwelling is so structurally unsound as to be beyond reasonable economic repair. The application must include a professional structural assessment in support of demolition; or</li> <li>• the existing condition poses a significant health or safety risk that is beyond reasonable economic repair. The application must include a professional structural or health assessment in support of demolition; or</li> <li>• where, in the opinion of the Authority, the integrity of the built form and street elevations of an original dwelling has been extensively and irreversibly diminished by unsympathetic alterations and additions.</li> </ul> <p>AND any replacement construction conforms to all provisions applicable to non-original dwellings.</p> <p>5.1b Except where a dwelling presents an immediate threat to public safety, the total demolition of an identified dwelling shall not be permitted unless an application for a replacement dwelling within a garden setting is approved.</p>	

**5.1c** Where in the opinion of the Authority, neglect of an identified dwelling has contributed to the dwelling becoming structurally unsound so as to necessitate total demolition, redevelopment of the site shall not exceed the gross floor area of the identified dwelling.

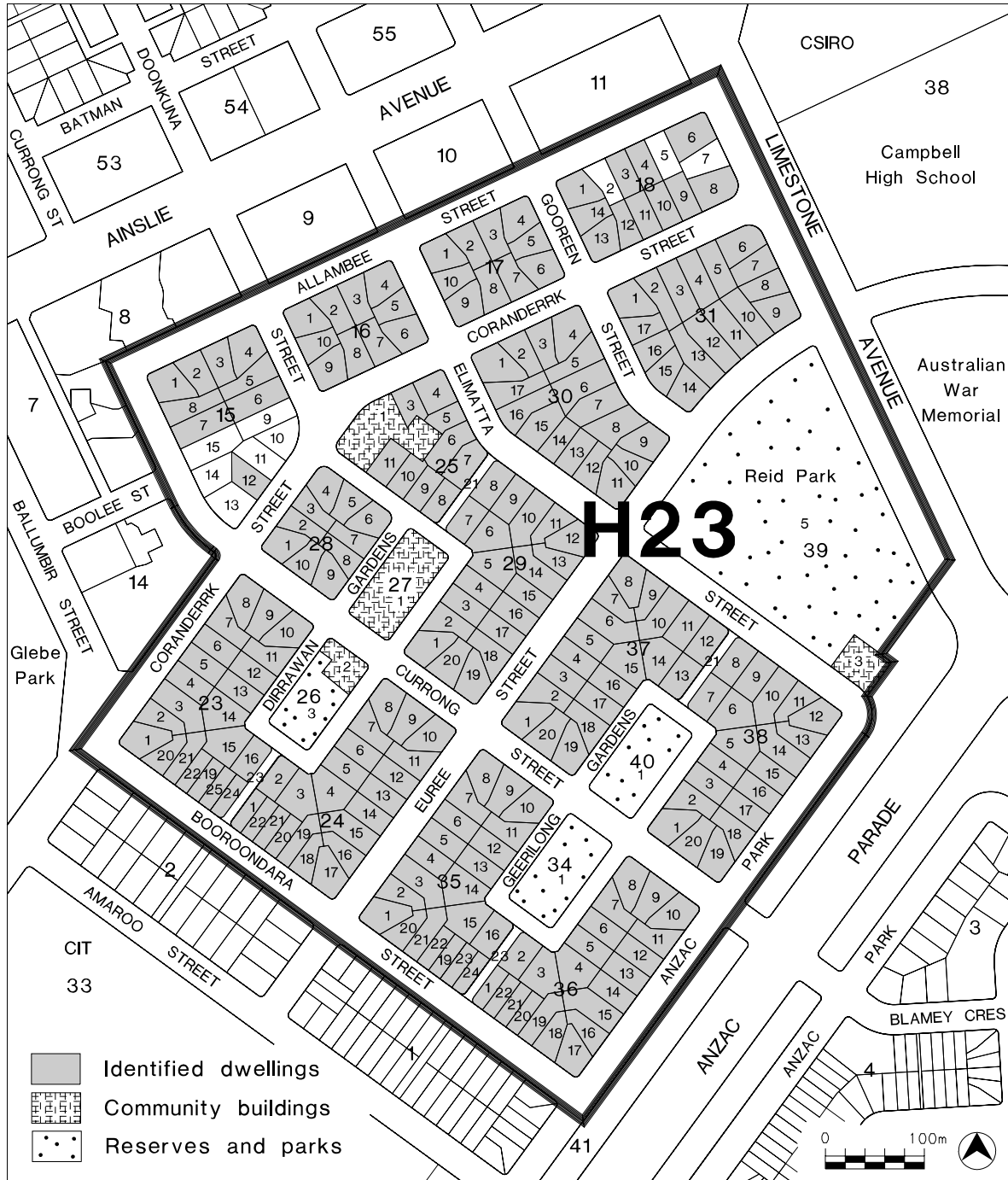
Additions to a replacement dwelling shall not be permitted within 3 years of completion of the replacement dwelling.

**5.1d** The partial demolition of original external building fabric of identified dwellings shall only be permitted in the context of permitted alteration or additions.

**Requirements subject to the discretion of the Authority**

**5.1e** Alteration to, or demolition of, internal building fabric of identified dwellings may be permitted provided the external building fabric of the dwelling is not adversely affected.

**FIGURE 2: IDENTIFIED DWELLINGS, COMMUNITY BUILDINGS, RESERVES AND PARKS**



**SCHEDULE 1: INDIVIDUAL PLACES OF SPECIFIC VALUES**

Reid Uniting Church	Section 25 Block 1
Reid Preschool	Section 26 Block 2