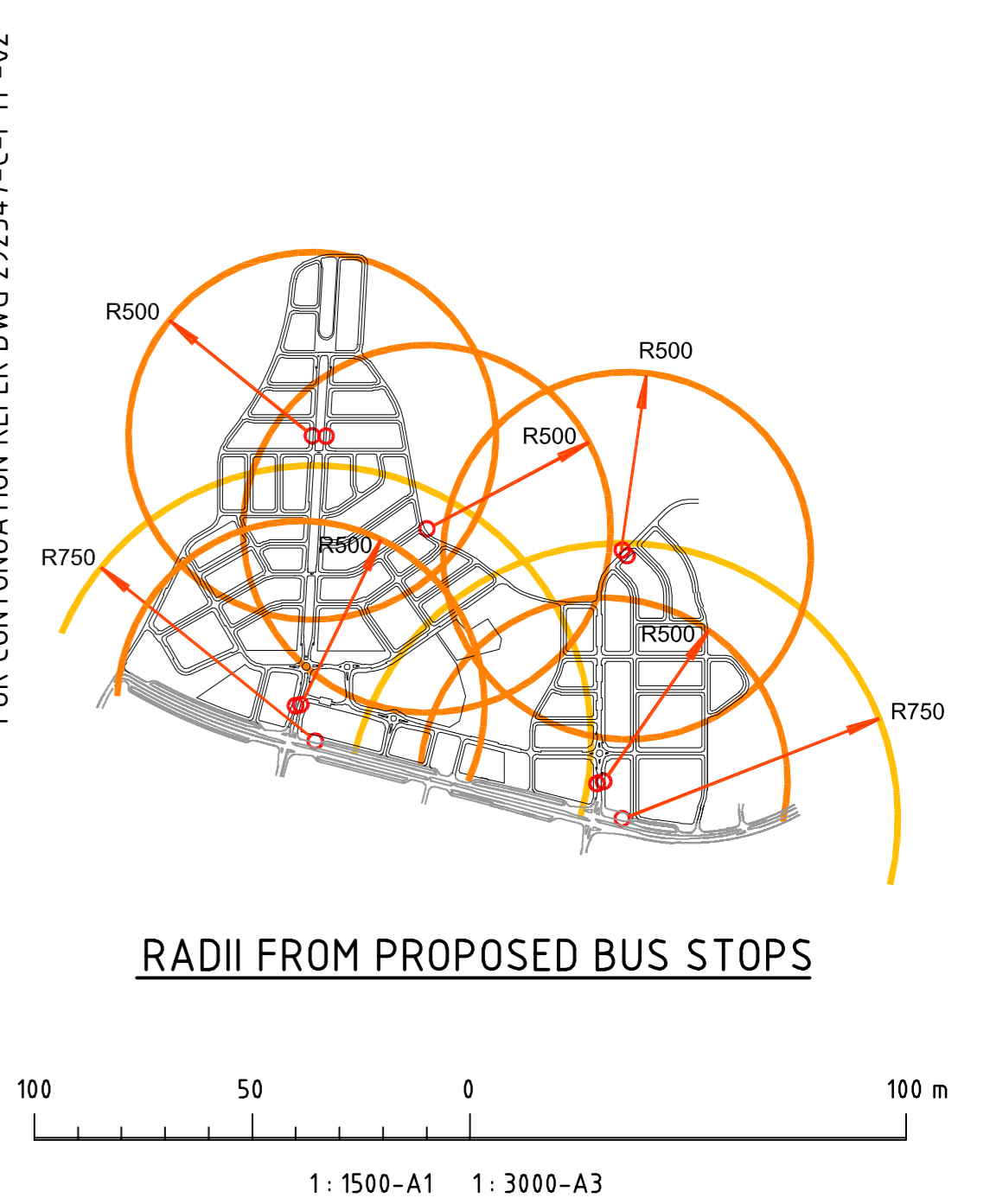


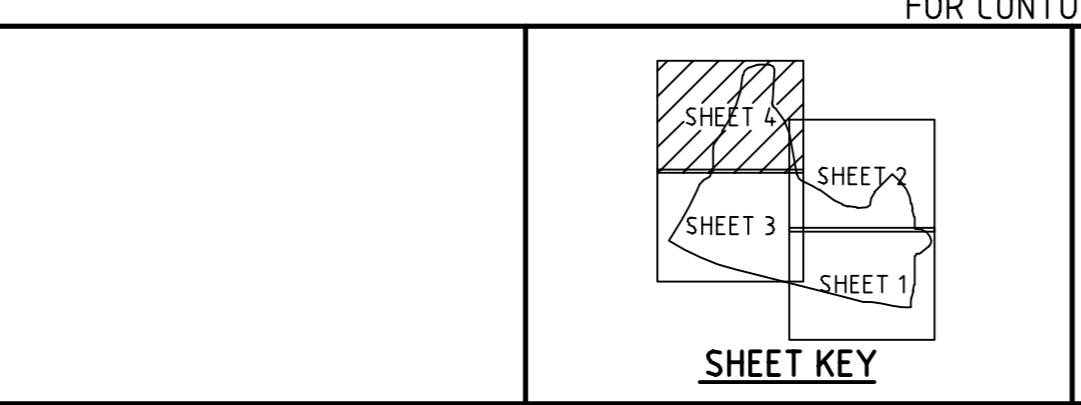
LEGEND

- a PRELIMINARY BLOCK NUMBER
- AA PRELIMINARY SECTION NUMBER
- [Red Box] BLOCK NOT WITHIN 400m WALKING DISTANCE FROM BUS ROUTES (TOTAL = ZERO)
- [Blue Dashed Line] PROPOSED 1.5m WIDE CONCRETE PATH
- [Light Blue Dashed Line] PROPOSED 2.0m WIDE CONCRETE PATH
- [Green Dashed Line] PROPOSED 2.5m WIDE CONCRETE PATH
- [Purple Dashed Line] FUTURE 6.0m WIDE CONCRETE PATH (BY OTHERS) (FINAL LOCATION SUBJECT TO RIVER CORRIDOR CONCEPT PLAN)
- [Black Dashed Line] FUTURE 1.5m WIDE PATH (BY OTHERS)
- [Black Dotted Line] FUTURE 2.5m WIDE PATH (BY OTHERS)
- [Black Dotted Line] FUTURE 3.0m WIDE PATH (BY OTHERS)
- [Grey Line] EXISTING PATH
- [Green Line] ONROAD CYCLEPATH
- [Red Dashed Line] BUS ROUTE
- [Yellow Dashed Line] FUTURE BUS ROUTE (HIGH FREQUENCY)
- [Orange Line] AREA WITHIN 500m OF BUS STOP
- [Yellow Line] AREA WITHIN 750m OF BUS STOP (HIGH FREQUENCY)
- [B in Circle] PROPOSED BUS STOP

- ### NOTES:
1. LOCATION OF BUS STOPS TO BE CONFIRMED WITH TAMS AND ACTION.
 2. ALL BLOCKS WITHIN 400M WALKING DISTANCE OF PROPOSED BUS STOPS.
 3. ALL BLOCKS WITHIN 500M RADIUS OF PROPOSED LOCAL BUS STOPS.
 4. LIGHTING TO BE PROVIDED FOR LANEWAYS AND OPEN SPACE PATHS AT DETAIL DESIGN STAGE IN ACCORDANCE WITH AS1158.1.3.
 5. ALL GUIDE SIGNS TO BE PROVIDED AS PART OF DETAIL DESIGN IN ACCORDANCE WITH TRAFFIC CONTROL DEVICE DRAWINGS



Rev	Date	Description	Drawn	Appr
3	12/09/2011	FOR DA APPROVAL	TE	RTC
2	13/04/2011	REVISED WITH AUTHORITY COMMENTS	TE	RTC
1	14/03/2011	FOR EDP APPROVAL	TE	RTC



Land Development Agency
CANNBERRA FIRST

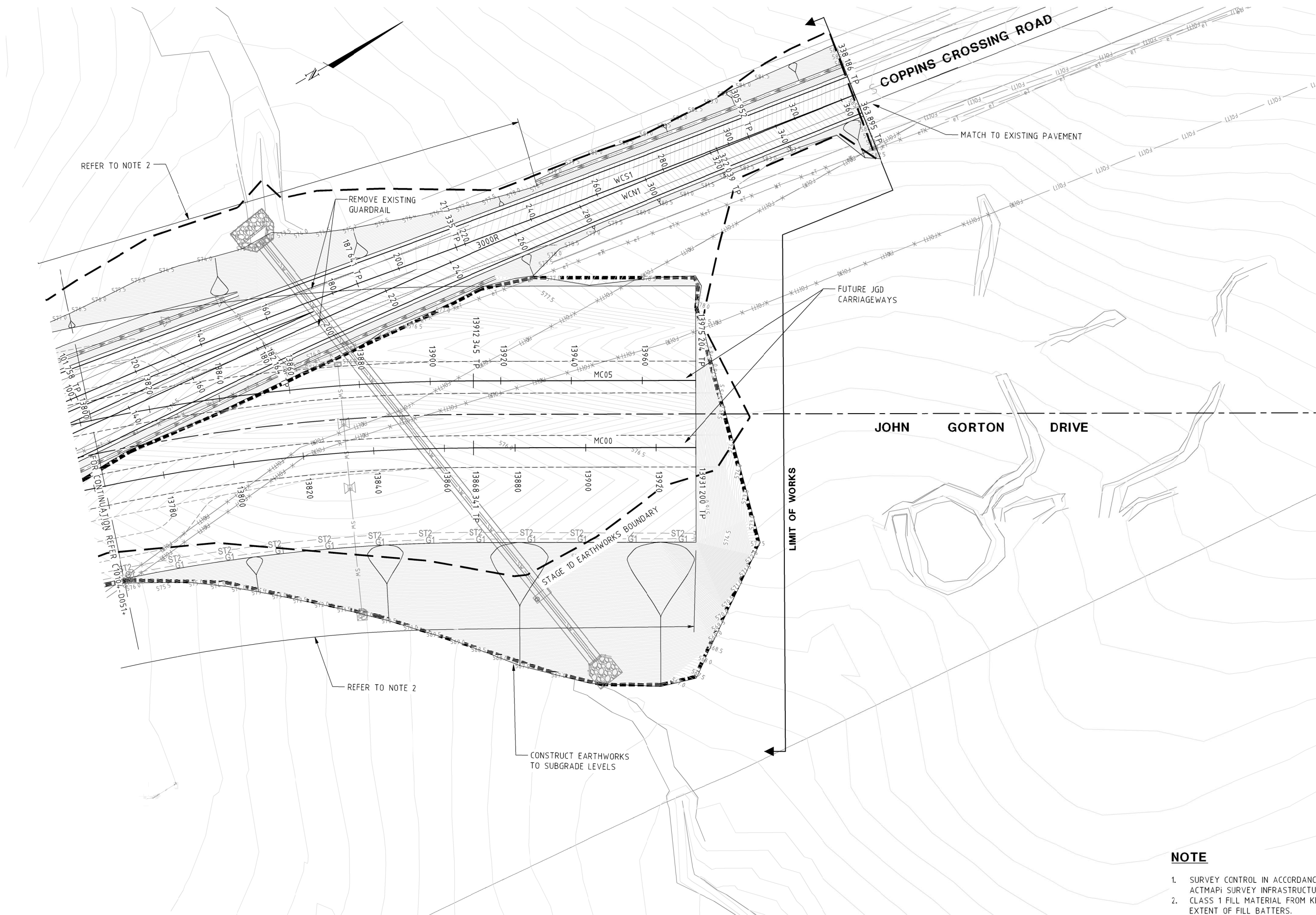
© Cardno Ltd 2011.
All Rights Reserved.
This document is produced by Cardno Ltd solely for the benefit of and use by the client in accordance with the terms of the retainer.
Cardno Ltd does not and shall not assume any responsibility or liability whatsoever to any third party relying out of any use or reliance by third party on the content of this document.

Cardno Young
ABN 24 998 579 484
Level 2, 14 Wormald Street Symonston, ACT, 2699
Ph (02) 6112 4540 Fax (02) 6112 4599
PO Box 7217, CPBC, ACT, 2610
Web www.cardno.com.au

Drawn	TE	Date	MAR 2011
Checked	RC	Date	MAR 2011
Designed	GZ	Date	MAR 2011
Verified	RC	Date	MAR 2011
Approved	GL	Date	MAR 2011

Client **LAND DEVELOPMENT AGENCY**
COOMBS RESIDENTIAL ESTATE
ESTATE DEVELOPMENT PLAN
 PUBLIC TRANSPORT NETWORK & OFF ROAD MOVEMENT SYTEMS
 SHEET 4 OF 4

Status EDP SUBMISSION			
Date	Datum	Scale	Size
12/01/2011	AHD	1:1500	A1
Drawing Number	Page No	Revision	
292347-C-PTP-04	77	3	



- NOTE**
1. SURVEY CONTROL IN ACCORDANCE WITH ACTMAPi SURVEY INFRASTRUCTURE.
 2. CLASS 1 FILL MATERIAL FROM KERB TO THE EXTENT OF FILL BATTERS.

FILE: H:\C10100\C10104\drawing\stage 1d\DA\C10104-D040-GENERAL ARRANGEMENT.dwg 18th-Jul-2012 9:40AM USER: Leonard Griffiths
 Xref's: XX-GHD JGD CERBS X-SURVEY X-A1-C10104 X-DESIGN-C10104 X-CONTROL-C10104 X-EXCONTOURS X-DEONT-C10104 X-CONTROL-GHD-C10104 X-EXSERV-GHD-C10104 X-EXSERV-GHD2-C10104

AMENDMENTS	DESIGN	DRAWN	CHECK	APPROVED	DATE
A	TDP	NN	JG	[Signature]	11/04/12
B					
C					
D					
E					
F					

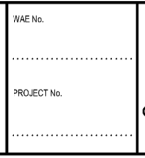
AMENDMENT DETAILS	

AS PLOT SCALE (METRES) A1 PLOT

1:1000 10 5 0 10 20 1:500

PROJECT No. _____

DATE _____



CLIENT

ACT Government Economic Development
ACT Government Environment and Sustainable Development
ACT Government Treasury

PROJECT

MOLONGLO INFRASTRUCTURE
STAGE 1D / STAGE 2A OVERLAP
BLOCKS 18 AND 23

BROWN
 Smart Consulting
 © 2012 www.brownconsulting.com.au

DRAWING TITLE

GENERAL ARRANGEMENT
SHEET 2

DRAWING NUMBER

C10104-D042

AMEND. _____