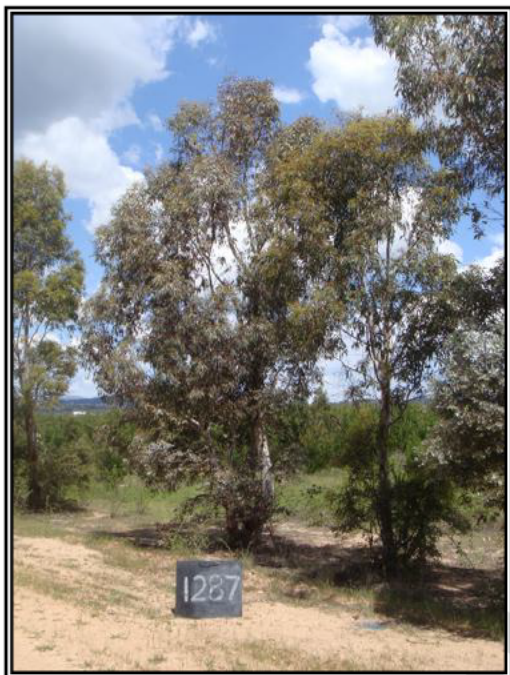


MOLONGLO / COOMBS & WRIGHT TREE ASSESSMENT

Tree N^o: 1287



Regulated Tree:	Y
Classification of Tree Quality:	
• Arboricultural Assessment	P
• Contribution to Urban Amenity	P
Recommendation:	Remove
Location	

Survey Details:

Organisation:	dsb Landscape Architects	Grid Co-ordinates:	E 202638.739	N 599749.389
Date of Survey:	30 th October 2009	Assessor ID:	JL & ST	

Tree Details:

Species:	Eucalyptus rubida			Common Name:	Candle bark		
Height:	9.8	Canopy spread:	8	Trunk Circum:	1600	N ^o of Trunks	4
Health/Condition:	Relative density of foliage						H
	Amount of dead wood in canopy						H
	Prevalence of insect attack or disease						H
	Prevalence of epicormic growth						H
	Prevalence of mistletoe						H
Overall health/condition of the tree						F	
Age:	A	Age/Health/Condition:	A/F	Form:	U	Hazard Potential:	M
Habitat Value:	N			Tolerance to Disturbance:	M		

Contribution to Future Urban Amenity:

Scenic:	L	Rareness or Commonness:	M	Habitat quality:	M	Cultural, Social, Scientific:	L
Contribution to Immediate Landscaping:	L		Comment:	Poor form.			
Economic justification for retention or removal:							
Ameliorative work to reduce Risk:	Y			Is work cost effective?:	N		
Landscape Groups:	Comment:						

Tree Protection and Management:

Tree Protection Zone & Conditions:	M	b, c & d always apply
Arboricultural Notes:	Removal of second trunk will damage tree.	

MOLONGLO / COOMBS & WRIGHT TREE ASSESSMENT

Tree N°:	1288
----------	------



Regulated Tree:	N
Classification of Tree Quality:	
• Arboricultural Assessment	P
• Contribution to Urban Amenity	P
Recommendation:	Remove
Location	

Survey Details:

Organisation:	dsb Landscape Architects	Grid Co-ordinates:	E 202646.971	N 599744.956
Date of Survey:	30 th October 2009	Assessor ID:	JL & ST	

Tree Details:

Species:	Eucalyptus viminalis			Common Name:	Ribbon gum		
Height:	10.3	Canopy spread:	6	Trunk Circum:	900	N° of Trunks	1
Health/Condition:	Relative density of foliage						M
	Amount of dead wood in canopy						M
	Prevalence of insect attack or disease						L
	Prevalence of epicormic growth						H
	Prevalence of mistletoe						H
Overall health/condition of the tree						F	
Age:	A	Age/Health/Condition:	A/F	Form:	T	Hazard Potential:	M
Habitat Value:	N			Tolerance to Disturbance:	M		

Contribution to Future Urban Amenity:

Scenic:	L	Rareness or Commonness:	M	Habitat quality:	M	Cultural, Social, Scientific:	L
Contribution to Immediate Landscaping:		L	Comment:				
Economic justification for retention or removal:							
Ameliorative work to reduce Risk:			Y	Is work cost effective?:			N
Landscape Groups:		Comment:					

Tree Protection and Management:

Tree Protection Zone & Conditions:	M	b, c & d always apply					
Arboricultural Notes:	Diseased lower trunk.						

MOLONGLO / COOMBS & WRIGHT TREE ASSESSMENT

Tree N^o: 1289



Regulated Tree:	N
Classification of Tree Quality:	
• Arboricultural Assessment	P
• Contribution to Urban Amenity	P
Recommendation:	Remove
Location	

Survey Details:

Organisation:	dsb Landscape Architects	Grid Co-ordinates:	E 202658.499	N 599738.264
Date of Survey:	4 th November 2009	Assessor ID:	JL & ST	

Tree Details:

Species:	Eucalyptus viminalis			Common Name:	Ribbon gum		
Height:	6.8	Canopy spread:	5	Trunk Circum:	1100	N ^o of Trunks	4
Health/Condition:	Relative density of foliage						M
	Amount of dead wood in canopy						H
	Prevalence of insect attack or disease						M
	Prevalence of epicormic growth						H
	Prevalence of mistletoe						H
Overall health/condition of the tree						F	
Age:	A	Age/Health/Condition:	A/F	Form:	U	Hazard Potential:	M
Habitat Value:	N			Tolerance to Disturbance:	M		

Contribution to Future Urban Amenity:

Scenic:	L	Rareness or Commonness:	M	Habitat quality:	M	Cultural, Social, Scientific:	L
Contribution to Immediate Landscaping:		L	Comment:				
Economic justification for retention or removal:							
Ameliorative work to reduce Risk:			Y	Is work cost effective?:			N
Landscape Groups:		Comment:					

Tree Protection and Management:

Tree Protection Zone & Conditions:	M	b, c & d always apply
Arboricultural Notes:	Coppice from ground level.	

MOLONGLO / COOMBS & WRIGHT TREE ASSESSMENT

Tree N°: 1290



Regulated Tree:	Y
Classification of Tree Quality:	
• Arboricultural Assessment	P
• Contribution to Urban Amenity	P
Recommendation:	Remove
Location	

Survey Details:

Organisation:	dsb Landscape Architects	Grid Co-ordinates:	E 202665.560	N 599733.868
Date of Survey:	30 th October 2009	Assessor ID:	JL & ST	

Tree Details:

Species:	Eucalyptus rubida			Common Name:	Candle bark		
Height:	9.1	Canopy spread:	6	Trunk Circum:	1700	N° of Trunks	3
Health/Condition:	Relative density of foliage						M
	Amount of dead wood in canopy						H
	Prevalence of insect attack or disease						H
	Prevalence of epicormic growth						H
	Prevalence of mistletoe						H
Overall health/condition of the tree						F	
Age:	A	Age/Health/Condition:	A/F	Form:	U	Hazard Potential:	M
Habitat Value:	N			Tolerance to Disturbance:	M		

Contribution to Future Urban Amenity:

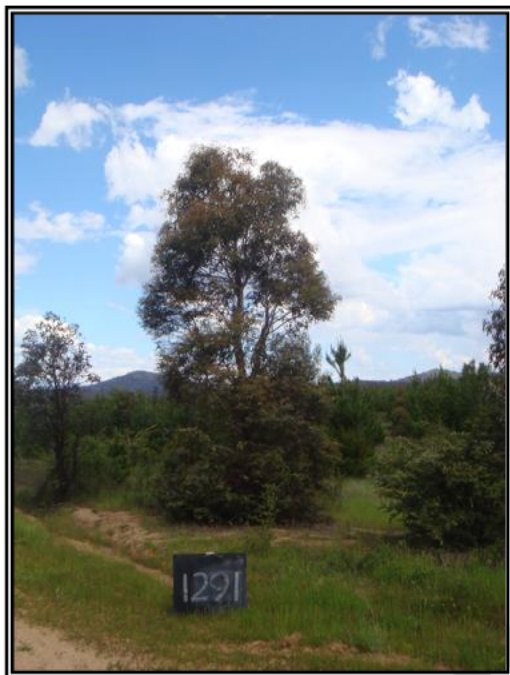
Scenic:	L	Rareness or Commonness:	M	Habitat quality:	M	Cultural, Social, Scientific:	L	
Contribution to Immediate Landscaping:		L	Comment: Trunks from ground level, poor form.					
Economic justification for retention or removal:								
Ameliorative work to reduce Risk:			Y	Is work cost effective?:				N
Landscape Groups:		Comment:						

Tree Protection and Management:

Tree Protection Zone & Conditions:	M	b, c & d always apply
Arboricultural Notes:		

MOLONGLO / COOMBS & WRIGHT TREE ASSESSMENT

Tree N^o: 1291



Regulated Tree:	N
Classification of Tree Quality:	
• Arboricultural Assessment	M
• Contribution to Urban Amenity	M
Recommendation:	Retain
Location	

Survey Details:

Organisation:	dsb Landscape Architects	Grid Co-ordinates:	E 202680.124	N 599724.474
Date of Survey:	30 th October 2009	Assessor ID:	JL & ST	

Tree Details:

Species:	Eucalyptus viminalis			Common Name:	Ribbon gum		
Height:	7.4	Canopy spread:	6	Trunk Circum:	900	N ^o of Trunks	1
Health/Condition:	Relative density of foliage						M
	Amount of dead wood in canopy						H
	Prevalence of insect attack or disease						H
	Prevalence of epicormic growth						H
	Prevalence of mistletoe						H
Overall health/condition of the tree						F	
Age:	A	Age/Health/Condition:	A/F	Form:	T	Hazard Potential:	L
Habitat Value:	N			Tolerance to Disturbance:	M		

Contribution to Future Urban Amenity:

Scenic:	H	Rareness or Commonness:	M	Habitat quality:	M	Cultural, Social, Scientific:	L
Contribution to Immediate Landscaping:	M		Comment:				
Economic justification for retention or removal:							
Ameliorative work to reduce Risk:	Y		Is work cost effective?:	Y			
Landscape Groups:			Comment:				

Tree Protection and Management:

Tree Protection Zone & Conditions:	M	b, c & d always apply
Arboricultural Notes:	Remove lower branches.	

MOLONGLO / COOMBS & WRIGHT TREE ASSESSMENT

Tree N°: 1292



Regulated Tree:	N
Classification of Tree Quality:	
• Arboricultural Assessment	P
• Contribution to Urban Amenity	P
Recommendation:	Remove
Location	

Survey Details:

Organisation:	dsb Landscape Architects	Grid Co-ordinates:	E 202689.668	N 599721.676
Date of Survey:	30 th October 2009	Assessor ID:	JL & ST	

Tree Details:

Species:	Eucalyptus bicostata			Common Name:	Blue gum		
Height:	3.7	Canopy spread:	1.5	Trunk Circum:	500	N° of Trunks	1
Health/Condition:	Relative density of foliage						L
	Amount of dead wood in canopy						M
	Prevalence of insect attack or disease						L
	Prevalence of epicormic growth						M
	Prevalence of mistletoe						H
Overall health/condition of the tree						P	
Age:	A	Age/Health/Condition:	A/P	Form:	U	Hazard Potential:	L
Habitat Value:	N			Tolerance to Disturbance:	M		

Contribution to Future Urban Amenity:

Scenic:	L	Rareness or Commonness:	M	Habitat quality:	M	Cultural, Social, Scientific:	L
Contribution to Immediate Landscaping:		L	Comment: Unsuitable species for urban area.				
Economic justification for retention or removal:							
Ameliorative work to reduce Risk:			N	Is work cost effective?:			
Landscape Groups:		Comment:					

Tree Protection and Management:

Tree Protection Zone & Conditions:	M	b, c & d always apply					
Arboricultural Notes:	Diseased.						

MOLONGLO / COOMBS & WRIGHT TREE ASSESSMENT

Tree N°: 1293



Regulated Tree:	N
Classification of Tree Quality:	
• Arboricultural Assessment	P
• Contribution to Urban Amenity	P
Recommendation:	Remove
Location	

Survey Details:

Organisation:	dsb Landscape Architects	Grid Co-ordinates:	E 202694.663	N 599719.391
Date of Survey:	30 th October 2009	Assessor ID:	JL & ST	

Tree Details:

Species:	Eucalyptus rubida			Common Name:	Candle bark		
Height:	7.6	Canopy spread:	5	Trunk Circum:	1100	N° of Trunks	3
Health/Condition:	Relative density of foliage						M
	Amount of dead wood in canopy						H
	Prevalence of insect attack or disease						H
	Prevalence of epicormic growth						H
	Prevalence of mistletoe						H
Overall health/condition of the tree						F	
Age:	A	Age/Health/Condition:	A/F	Form:	U	Hazard Potential:	M
Habitat Value:	N			Tolerance to Disturbance:	M		

Contribution to Future Urban Amenity:

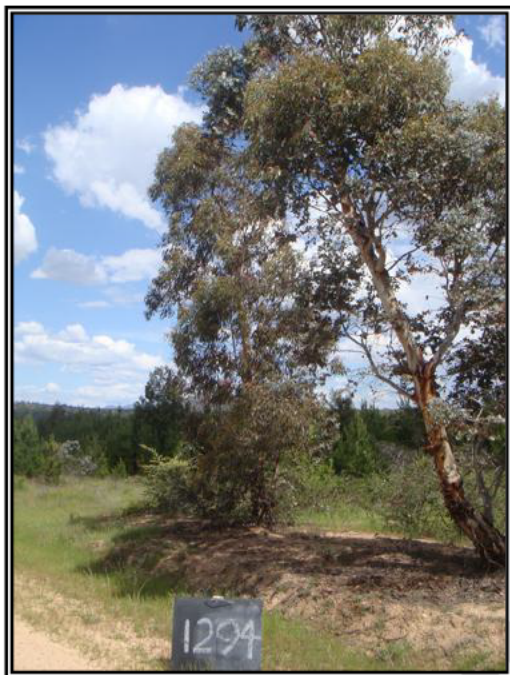
Scenic:	L	Rareness or Commonness:	M	Habitat quality:	M	Cultural, Social, Scientific:	L	
Contribution to Immediate Landscaping:		L	Comment: Leaning and poor form.					
Economic justification for retention or removal:								
Ameliorative work to reduce Risk:			Y	Is work cost effective?:				N
Landscape Groups:		Comment:						

Tree Protection and Management:

Tree Protection Zone & Conditions:	M	b, c & d always apply					
Arboricultural Notes:							

MOLONGLO / COOMBS & WRIGHT TREE ASSESSMENT

Tree N^o: 1294



Regulated Tree:	N
Classification of Tree Quality:	
• Arboricultural Assessment	M
• Contribution to Urban Amenity	M
Recommendation:	Retain
Location	

Survey Details:

Organisation:	dsb Landscape Architects	Grid Co-ordinates:	E 202698.974	N 599716.121
Date of Survey:	30 th October 2009	Assessor ID:	JL & ST	

Tree Details:

Species:	Eucalyptus rubida			Common Name:	Candle bark		
Height:	8.1	Canopy spread:	5	Trunk Circum:	900	N ^o of Trunks	2
Health/Condition:	Relative density of foliage						M
	Amount of dead wood in canopy						H
	Prevalence of insect attack or disease						H
	Prevalence of epicormic growth						H
	Prevalence of mistletoe						H
Overall health/condition of the tree						G	
Age:	A	Age/Health/Condition:	A/G	Form:	T	Hazard Potential:	L
Habitat Value:	N			Tolerance to Disturbance:	M		

Contribution to Future Urban Amenity:

Scenic:	H	Rareness or Commonness:	M	Habitat quality:	M	Cultural, Social, Scientific:	L
Contribution to Immediate Landscaping:	M		Comment:				
Economic justification for retention or removal:							
Ameliorative work to reduce Risk:	Y		Is work cost effective?:	Y			
Landscape Groups:			Comment:				

Tree Protection and Management:

Tree Protection Zone & Conditions:	M	b, c & d always apply
Arboricultural Notes:	Remove small second trunk.	

MOLONGLO / COOMBS & WRIGHT TREE ASSESSMENT

Tree N°: 1295



Regulated Tree:	N
Classification of Tree Quality:	
• Arboricultural Assessment	P
• Contribution to Urban Amenity	P
Recommendation:	Remove
Location	

Survey Details:

Organisation:	dsb Landscape Architects	Grid Co-ordinates:	E 202766.530	N 599677.909
Date of Survey:	4 th November 2009	Assessor ID:	JL & ST	

Tree Details:

Species:	Eucalyptus mannifera			Common Name:	White brittle gum		
Height:	5.5	Canopy spread:	4	Trunk Circum:	900	N° of Trunks	3
Health/Condition:	Relative density of foliage						M
	Amount of dead wood in canopy						H
	Prevalence of insect attack or disease						H
	Prevalence of epicormic growth						M
	Prevalence of mistletoe						H
Overall health/condition of the tree						P	
Age:	A	Age/Health/Condition:	A/P	Form:	U	Hazard Potential:	M
Habitat Value:	N			Tolerance to Disturbance:	M		

Contribution to Future Urban Amenity:

Scenic:	L	Rareness or Commonness:	M	Habitat quality:	M	Cultural, Social, Scientific:	L
Contribution to Immediate Landscaping:		L	Comment:				
Economic justification for retention or removal:							
Ameliorative work to reduce Risk:			Y	Is work cost effective?:			N
Landscape Groups:		Comment:					

Tree Protection and Management:

Tree Protection Zone & Conditions:	M	b, c & d always apply
Arboricultural Notes:	Removing trunks will damage tree.	

MOLONGLO / COOMBS & WRIGHT TREE ASSESSMENT

Tree N°: 1296



Regulated Tree:	N
Classification of Tree Quality:	
• Arboricultural Assessment	M
• Contribution to Urban Amenity	M
Recommendation:	Retain
Location	

Survey Details:

Organisation:	dsb Landscape Architects	Grid Co-ordinates:	E 202756.783	N 599684.453
Date of Survey:	4 th November 2009	Assessor ID:	JL & ST	

Tree Details:

Species:	Eucalyptus viminalis			Common Name:	Ribbon gum		
Height:	10.5	Canopy spread:	5	Trunk Circum:	900	N° of Trunks	1
Health/Condition:	Relative density of foliage						H
	Amount of dead wood in canopy						H
	Prevalence of insect attack or disease						H
	Prevalence of epicormic growth						H
	Prevalence of mistletoe						H
	Overall health/condition of the tree						G
Age:	A	Age/Health/Condition:	A/G	Form:	T	Hazard Potential:	L
Habitat Value:	N			Tolerance to Disturbance:	M		

Contribution to Future Urban Amenity:

Scenic:	H	Rareness or Commonness:	M	Habitat quality:	M	Cultural, Social, Scientific:	L
Contribution to Immediate Landscaping:	M		Comment:	Healthy young tree.			
Economic justification for retention or removal:							
Ameliorative work to reduce Risk:	Y		Is work cost effective?:	Y			
Landscape Groups:		Comment:					

Tree Protection and Management:

Tree Protection Zone & Conditions:	M	b, c & d always apply
Arboricultural Notes:	Remove small lower branches.	

MOLONGLO / COOMBS & WRIGHT TREE ASSESSMENT

Tree N°: 1297



Regulated Tree:	N
Classification of Tree Quality:	
• Arboricultural Assessment	M
• Contribution to Urban Amenity	M
Recommendation:	Retain
Location	

Survey Details:

Organisation:	dsb Landscape Architects	Grid Co-ordinates:	E 202752.042	N 599687.842
Date of Survey:	4 th November 2009	Assessor ID:	JL & ST	

Tree Details:

Species:	Eucalyptus rubida			Common Name:	Candle bark		
Height:	10.2	Canopy spread:	5	Trunk Circum:	1100	N° of Trunks	2
Health/Condition:	Relative density of foliage						M
	Amount of dead wood in canopy						H
	Prevalence of insect attack or disease						H
	Prevalence of epicormic growth						M
	Prevalence of mistletoe						H
Overall health/condition of the tree						G	
Age:	A	Age/Health/Condition:	A/G	Form:	T	Hazard Potential:	L
Habitat Value:	N			Tolerance to Disturbance:	M		

Contribution to Future Urban Amenity:

Scenic:	H	Rareness or Commonness:	M	Habitat quality:	M	Cultural, Social, Scientific:	L
Contribution to Immediate Landscaping:	M		Comment:	A reasonably good tree.			
Economic justification for retention or removal:							
Ameliorative work to reduce Risk:	Y		Is work cost effective?:	Y			
Landscape Groups:	Comment:						

Tree Protection and Management:

Tree Protection Zone & Conditions:	M	b, c & d always apply
Arboricultural Notes:	Remove small trunk.	

MOLONGLO / COOMBS & WRIGHT TREE ASSESSMENT

Tree N^o: 1298



Regulated Tree:	N
Classification of Tree Quality:	
• Arboricultural Assessment	P
• Contribution to Urban Amenity	P
Recommendation:	Remove
Location	

Survey Details:

Organisation:	dsb Landscape Architects	Grid Co-ordinates:	E 202809.384	N599654.121
Date of Survey:	4 th November 2009	Assessor ID:	JL & ST	

Tree Details:

Species:	Eucalyptus elata			Common Name:	River peppermint		
Height:	5.6	Canopy spread:	4	Trunk Circum:	1100	N ^o of Trunks	4
Health/Condition:	Relative density of foliage						M
	Amount of dead wood in canopy						H
	Prevalence of insect attack or disease						M
	Prevalence of epicormic growth						M
	Prevalence of mistletoe						H
Overall health/condition of the tree						P	
Age:	A/	Age/Health/Condition:	A/P	Form:	U	Hazard Potential:	M
Habitat Value:	N			Tolerance to Disturbance:	M		

Contribution to Future Urban Amenity:

Scenic:	L	Rareness or Commonness:	M	Habitat quality:	M	Cultural, Social, Scientific:	L
Contribution to Immediate Landscaping:	L		Comment:	All coppice growth.			
Economic justification for retention or removal:							
Ameliorative work to reduce Risk:	N		Is work cost effective?:				
Landscape Groups:			Comment:				

Tree Protection and Management:

Tree Protection Zone & Conditions:	b, c & d always apply						
Arboricultural Notes:							

MOLONGLO / COOMBS & WRIGHT TREE ASSESSMENT

Tree N°: 1299



Regulated Tree:	N
Classification of Tree Quality:	
• Arboricultural Assessment	P
• Contribution to Urban Amenity	P
Recommendation:	Remove
Location	

Survey Details:

Organisation:	dsb Landscape Architects	Grid Co-ordinates:	E 202816.366	N 599648.913
Date of Survey:	4 th November 2009	Assessor ID:	JL & ST	

Tree Details:

Species:	Eucalyptus elata			Common Name:	River peppermint		
Height:	4.4	Canopy spread:	3	Trunk Circum:	500	N° of Trunks	2
Health/Condition:	Relative density of foliage						M
	Amount of dead wood in canopy						H
	Prevalence of insect attack or disease						H
	Prevalence of epicormic growth						M
	Prevalence of mistletoe						H
Overall health/condition of the tree						P	
Age:	A	Age/Health/Condition:	A/P	Form:	U	Hazard Potential:	M
Habitat Value:	N			Tolerance to Disturbance:	M		

Contribution to Future Urban Amenity:

Scenic:	L	Rareness or Commonness:	M	Habitat quality:	M	Cultural, Social, Scientific:	L
Contribution to Immediate Landscaping:	L		Comment:	All coppice growth.			
Economic justification for retention or removal:							
Ameliorative work to reduce Risk:	N		Is work cost effective?:				
Landscape Groups:			Comment:				

Tree Protection and Management:

Tree Protection Zone & Conditions:	b, c & d always apply						
Arboricultural Notes:							

MOLONGLO / COOMBS & WRIGHT TREE ASSESSMENT

Tree N°:	1300
----------	------



Regulated Tree:	N
Classification of Tree Quality:	
• Arboricultural Assessment	P
• Contribution to Urban Amenity	P
Recommendation:	Remove
Location	

Survey Details:

Organisation:	dsb Landscape Architects	Grid Co-ordinates:	E 202823.165	N 599641.642
Date of Survey:	4 th November 2009	Assessor ID:	JL & ST	

Tree Details:

Species:	Eucalyptus viminalis			Common Name:	Ribbon gum		
Height:	7.4	Canopy spread:	4	Trunk Circum:	1100	N° of Trunks	4
Health/Condition:	Relative density of foliage						M
	Amount of dead wood in canopy						M
	Prevalence of insect attack or disease						H
	Prevalence of epicormic growth						H
	Prevalence of mistletoe						H
Overall health/condition of the tree						P	
Age:	A	Age/Health/Condition:	A/P	Form:	U	Hazard Potential:	M
Habitat Value:	N			Tolerance to Disturbance:	M		

Contribution to Future Urban Amenity:

Scenic:	L	Rareness or Commonness:	M	Habitat quality:	M	Cultural, Social, Scientific:	L
Contribution to Immediate Landscaping:		L	Comment: Four trunks off dead main trunk.				
Economic justification for retention or removal:							
Ameliorative work to reduce Risk:			N	Is work cost effective?:			
Landscape Groups:		Comment:					

Tree Protection and Management:

Tree Protection Zone & Conditions:	b, c & d always apply						
Arboricultural Notes:							

MOLONGLO / COOMBS & WRIGHT TREE ASSESSMENT

Tree N^o: 1301



Regulated Tree:	N
Classification of Tree Quality:	
• Arboricultural Assessment	P
• Contribution to Urban Amenity	P
Recommendation:	Remove
Location	

Survey Details:

Organisation:	dsb Landscape Architects	Grid Co-ordinates:	E 202834.306	N 599637.942
Date of Survey:	4 th November 2009	Assessor ID:	JL & ST	

Tree Details:

Species:	Eucalyptus rubida			Common Name:	Candle bark		
Height:	9.9	Canopy spread:	5	Trunk Circum:	1100	N ^o of Trunks	2
Health/Condition:	Relative density of foliage						M
	Amount of dead wood in canopy						M
	Prevalence of insect attack or disease						H
	Prevalence of epicormic growth						L
	Prevalence of mistletoe						H
Overall health/condition of the tree						P	
Age:	A	Age/Health/Condition:	A/P	Form:	U	Hazard Potential:	M
Habitat Value:	N			Tolerance to Disturbance:	M		

Contribution to Future Urban Amenity:

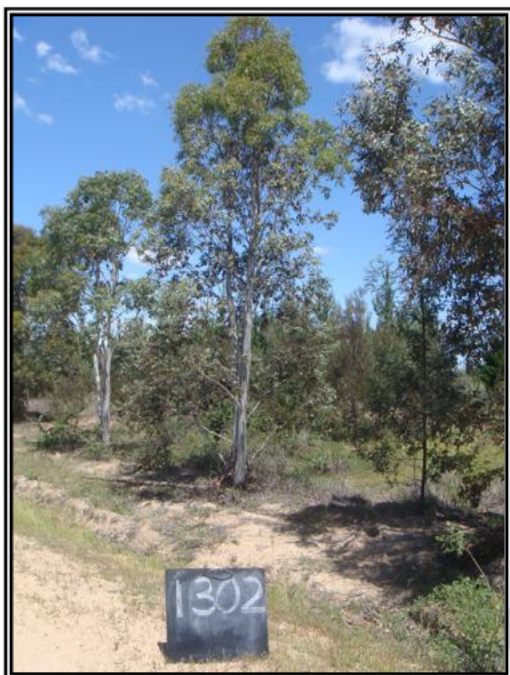
Scenic:	L	Rareness or Commonness:	M	Habitat quality:	M	Cultural, Social, Scientific:	L
Contribution to Immediate Landscaping:		L	Comment:				
Economic justification for retention or removal:							
Ameliorative work to reduce Risk:			Y	Is work cost effective?:			N
Landscape Groups:		Comment:					

Tree Protection and Management:

Tree Protection Zone & Conditions:	M	b, c & d always apply
Arboricultural Notes:	Removal of second trunk will damage tree.	

MOLONGLO / COOMBS & WRIGHT TREE ASSESSMENT

Tree N°: 1302



Regulated Tree:	N
Classification of Tree Quality:	
• Arboricultural Assessment	P
• Contribution to Urban Amenity	P
Recommendation:	Remove
Location	

Survey Details:

Organisation:	dsb Landscape Architects	Grid Co-ordinates:	E 202839.070	N 599635.034
Date of Survey:	4 th November 2009	Assessor ID:	JL & ST	

Tree Details:

Species:	Eucalyptus rubida			Common Name:	Candle bark		
Height:	6.9	Canopy spread:	4	Trunk Circum:	1200	N° of Trunks	3
Health/Condition:	Relative density of foliage						M
	Amount of dead wood in canopy						H
	Prevalence of insect attack or disease						M
	Prevalence of epicormic growth						M
	Prevalence of mistletoe						H
Overall health/condition of the tree						P	
Age:	A	Age/Health/Condition:	A/P	Form:	U	Hazard Potential:	M
Habitat Value:	N			Tolerance to Disturbance:	M		

Contribution to Future Urban Amenity:

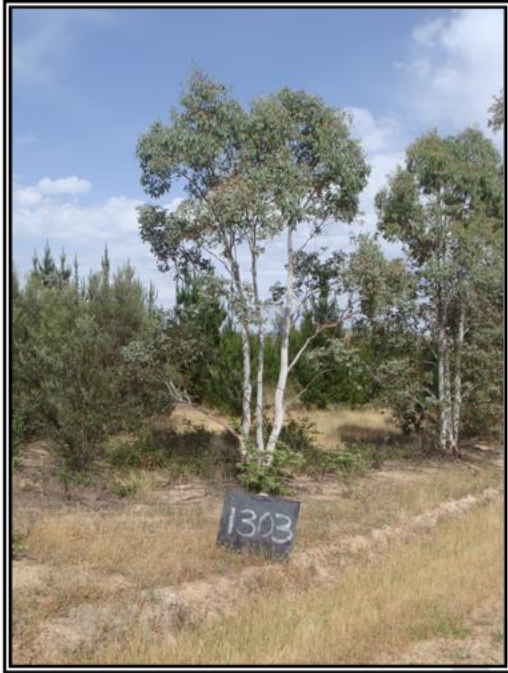
Scenic:	L	Rareness or Commonness:	M	Habitat quality:	M	Cultural, Social, Scientific:	L	
Contribution to Immediate Landscaping:		L	Comment: Three trunks from ground level.					
Economic justification for retention or removal:								
Ameliorative work to reduce Risk:			Y	Is work cost effective?:				N
Landscape Groups:		Comment:						

Tree Protection and Management:

Tree Protection Zone & Conditions:	M	b, c & d always apply
Arboricultural Notes:	Removing trunks will damage tree.	

MOLONGLO / COOMBS & WRIGHT TREE ASSESSMENT

Tree N°:	1303
----------	------



Regulated Tree:	N
Classification of Tree Quality:	
• Arboricultural Assessment	P
• Contribution to Urban Amenity	P
Recommendation:	Remove
Location	

Survey Details:

Organisation:	dsb Landscape Architects	Grid Co-ordinates:	E 202843.304	N599631.261
Date of Survey:	4 th November 2009	Assessor ID:	JL & ST	

Tree Details:

Species:	Eucalyptus rubida			Common Name:	Candle bark		
Height:	6	Canopy spread:	5	Trunk Circum:	1100	N° of Trunks	3
Health/Condition:	Relative density of foliage						M
	Amount of dead wood in canopy						M
	Prevalence of insect attack or disease						M
	Prevalence of epicormic growth						M
	Prevalence of mistletoe						H
Overall health/condition of the tree						P	
Age:	A	Age/Health/Condition:	A/P	Form:	U	Hazard Potential:	M
Habitat Value:	N			Tolerance to Disturbance:	M		

Contribution to Future Urban Amenity:

Scenic:	L	Rareness or Commonness:	M	Habitat quality:	M	Cultural, Social, Scientific:	L	
Contribution to Immediate Landscaping:		L	Comment: Three trunks from ground level.					
Economic justification for retention or removal:								
Ameliorative work to reduce Risk:			Y	Is work cost effective?:				N
Landscape Groups:		Comment:						

Tree Protection and Management:

Tree Protection Zone & Conditions:	M	b, c & d always apply
Arboricultural Notes:	Removing trunks will damage tree.	

MOLONGLO / COOMBS & WRIGHT TREE ASSESSMENT

Tree N°: 1304



Regulated Tree:	N
Classification of Tree Quality:	
• Arboricultural Assessment	P
• Contribution to Urban Amenity	P
Recommendation:	Remove
Location	

Survey Details:

Organisation:	dsb Landscape Architects	Grid Co-ordinates:	E 202854.414	N 599638.619
Date of Survey:	4 th November 2009	Assessor ID:	JL & ST	

Tree Details:

Species:	Eucalyptus viminalis			Common Name:	Ribbon gum		
Height:	6.6	Canopy spread:	4	Trunk Circum:	1100	N° of Trunks	4
Health/Condition:	Relative density of foliage						M
	Amount of dead wood in canopy						M
	Prevalence of insect attack or disease						H
	Prevalence of epicormic growth						M
	Prevalence of mistletoe						H
Overall health/condition of the tree						P	
Age:	A	Age/Health/Condition:	A/P	Form:	U	Hazard Potential:	M
Habitat Value:	N			Tolerance to Disturbance:	M		

Contribution to Future Urban Amenity:

Scenic:	L	Rareness or Commonness:	M	Habitat quality:	M	Cultural, Social, Scientific:	L	
Contribution to Immediate Landscaping:		L	Comment: Coppice growth.					
Economic justification for retention or removal:								
Ameliorative work to reduce Risk:			Y	Is work cost effective?:				N
Landscape Groups:		Comment:						

Tree Protection and Management:

Tree Protection Zone & Conditions:	M	b, c & d always apply
Arboricultural Notes:	Removing trunks will damage tree.	

MOLONGLO / COOMBS & WRIGHT TREE ASSESSMENT

Tree N°:	1305
----------	------



Regulated Tree:	N
Classification of Tree Quality:	
• Arboricultural Assessment	M
• Contribution to Urban Amenity	M
Recommendation:	Retain
Location	

Survey Details:

Organisation:	dsb Landscape Architects	Grid Co-ordinates:	E 202851.355	N 599623.210
Date of Survey:	4 th November 2009	Assessor ID:	JL & ST	

Tree Details:

Species:	Eucalyptus elata			Common Name:	River peppermint		
Height:	6.9	Canopy spread:	4	Trunk Circum:	1100	N° of Trunks	2
Health/Condition:	Relative density of foliage						H
	Amount of dead wood in canopy						H
	Prevalence of insect attack or disease						H
	Prevalence of epicormic growth						H
	Prevalence of mistletoe						H
	Overall health/condition of the tree						G
Age:	A	Age/Health/Condition:	A/G	Form:	T	Hazard Potential:	L
Habitat Value:	N			Tolerance to Disturbance:	M		

Contribution to Future Urban Amenity:

Scenic:	H	Rareness or Commonness:	M	Habitat quality:	M	Cultural, Social, Scientific:	L
Contribution to Immediate Landscaping:	M		Comment:	Slightly stunted.			
Economic justification for retention or removal:							
Ameliorative work to reduce Risk:	Y			Is work cost effective?:	Y		
Landscape Groups:		Comment:					

Tree Protection and Management:

Tree Protection Zone & Conditions:	M	b, c & d always apply
Arboricultural Notes:	Remove small trunk and small lower branches.	