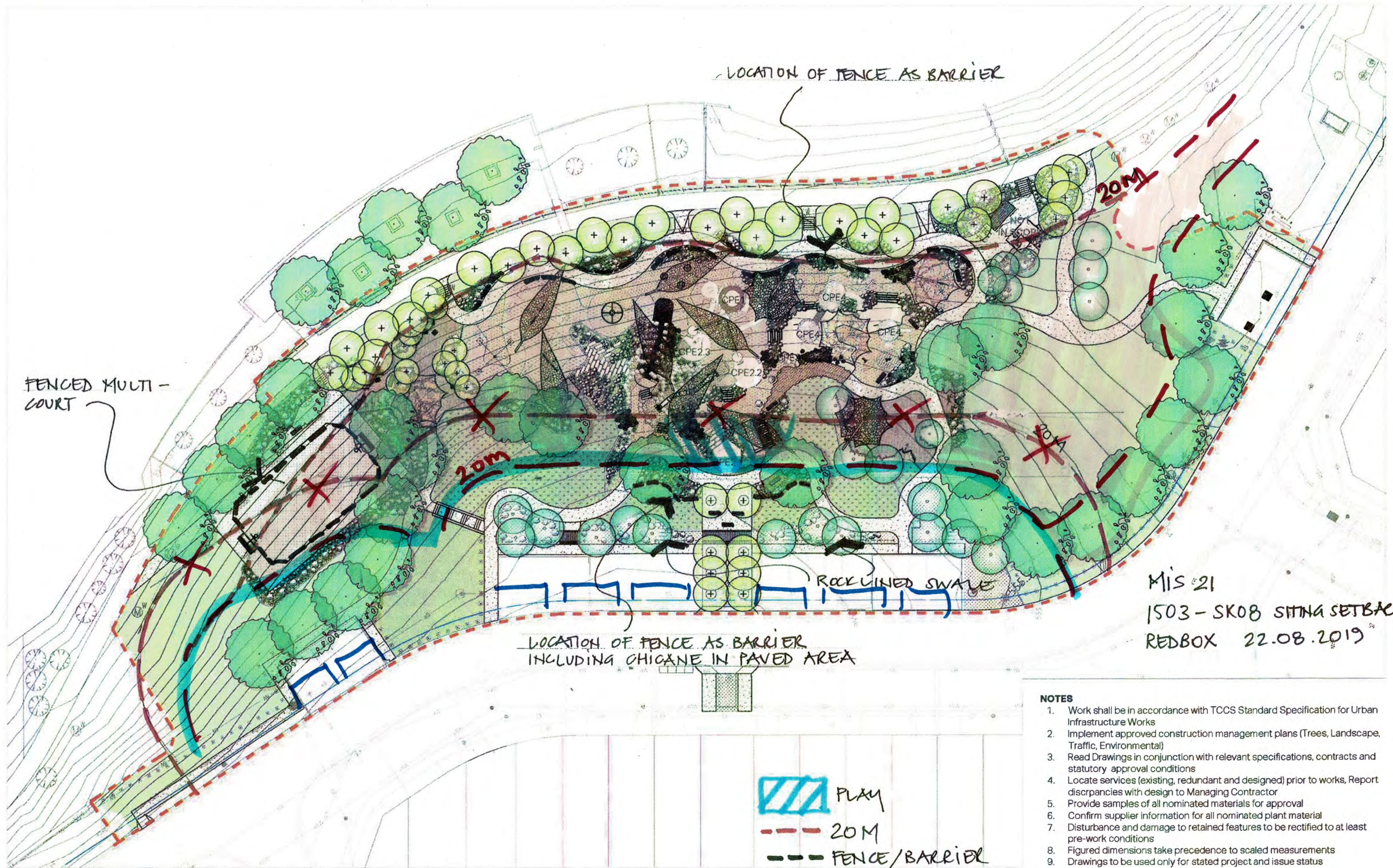




MIS 21
 1503 - SK08 SITING SETBACKS
 REDBOX 22.08.2019

NOTES

1. Work shall be in accordance with TCCS Standard Specification for Urban Infrastructure Works
2. Implement approved construction management plans (Trees, Landscape, Traffic, Environmental)
3. Read Drawings in conjunction with relevant specifications, contracts and statutory approval conditions
4. Locate services (existing, redundant and designed) prior to works, Report discrepancies with design to Managing Contractor
5. Provide samples of all nominated materials for approval
6. Confirm supplier information for all nominated plant material
7. Disturbance and damage to retained features to be rectified to at least pre-work conditions
8. Figured dimensions take precedence to scaled measurements
9. Drawings to be used only for stated project and issue status




LOCATION OF FENCE AS BARRIER

FENCED MULTI-COURT

LOCATION OF FENCE AS BARRIER INCLUDING CHICANE IN PAVED AREA

MIS 21
1503 - SK08 SITING SETBACKS
REDBOX 22.08.2019

- NOTES**
1. Work shall be in accordance with TCCS Standard Specification for Urban Infrastructure Works
 2. Implement approved construction management plans (Trees, Landscape, Traffic, Environmental)
 3. Read Drawings in conjunction with relevant specifications, contracts and statutory approval conditions
 4. Locate services (existing, redundant and designed) prior to works, Report discrepancies with design to Managing Contractor
 5. Provide samples of all nominated materials for approval
 6. Confirm supplier information for all nominated plant material
 7. Disturbance and damage to retained features to be rectified to at least pre-work conditions
 8. Figured dimensions take precedence to scaled measurements
 9. Drawings to be used only for stated project and issue status

 PLAY
 20 M
 FENCE/BARRIER



LETTER OF DESIGN REVIEW

Developer/Client: Suburban Land Agency
 Address: Transact House 470 Northbourne Ave Dickson ACT 2602
 Contact: Simon Tennent
 Project Title: **Letter of Design Review - Coombs Edge Worth Parade Playground**
 Applicant: Redbox Design Group
 Address: Unit 6, 35 Kennedy Street, Kingston ACT
 Contact: Karin Kemp
 TCCS Project Lead: Nanthy Kumarasamy

Dear Karin,

Date: **28/10/2021**

On behalf of the Transport Canberra and City Services (TCCS) Directorate, this Letter of Design Review is issued in accordance with **Notice of Decision 202037947** to confirm acceptance of the Drawings and Documents listed in the Attachment A.

TCCS has carried out selective audits of certain elements of the design only from the documentation submitted. This letter of design review is therefore issued based on the Consultant's certification that each design element prepared by the Consultant complies with the design criteria and the standards. This letter addresses the following design components

Stormwater	X	Road Geometry	X	Waste Management		
Footpaths	X	TCD's	X			
Driveways		Landscape	X	Is SMEC inspection required?	Yes	X
LMPP	X	Street Lighting	X		No	

This Letter is issued with the following conditions:

1. **The following Streetlighting comments to be addressed prior to construction of the electrical works.**
 - I. The proposed connection for new lights is from existing streetlight (SL 911-535) that is supplied from green pillar. Design does not include evidence that additional load can be safely connected to existing circuit.
 - II. New circuit will be supplied 24/7, design doesn't not include luminaires specification that would ensure correct operation of pathway lights under 24/7 supply. PE cell or smart node will ensure proper operation.
 - III. The design does not include full specification of used lights, including CCT, dimming and NEMA socket. Updated specification will ensure all TCCS requirements are met.
 - IV. It is recommended that lighting design, that clearly states lighting category is included in the documentation.
2. **The proposed warning sign on western side entry to be erected on the separate pole. Note:- speed limit signs cannot be erect as composite signs.**
3. **The kerb ramp should be constructed as per shown on the TCD drawing.**
4. **The site/soil classification must be confirmed prior to construct any structural element on the ground. A final geotechnical engineer's report and the structural engineer's certification must be provided at the operational acceptance stage.**
5. The issue of this Letter does not waive or diminish the continuing responsibilities of the Consultant with respect to the suitability and integrity of the design; nor does it absolve the Consultant of continuing obligations under the Standards.
6. Landscape Management and Protection Plan (LMPP) must be submitted and approved prior to the Letter of design Review is issued.
7. Should any road closure be proposed, this will be subject to a separate design approval from Roads ACT of a Temporary Traffic Management Plan.
8. Any proposed amendments, that impact on the integrity of the design, shall be resubmitted for assessment by Place Coordination prior to the implementation of such changes.
9. On the satisfactory completion of all design and construction activities, a Certificate of Operational Acceptance will be issued for the project on receipt of all relevant documents as specified in *TCCS Reference 07 - Requirements for Operational Acceptance Submission*.

Kind Regards,

Schedule 2.2(a)(ii)

Lingam Jatheendran | Senior Director

Development and Design Review | Transport Canberra and City Services | ACT Government

Note that the definition of the terms 'Consultant', 'Works' and 'Standards' shall be the same as that given in TCCS Reference Document 6.

ATTACHMENT A

DRAWINGS AND DOCUMENTS INCLUDED IN THE LETTER OF DESIGN REVIEW

DRAWING	DESCRIPTION	REVISION
LANDSCAPE		
1503 000 COV	COVER SHEET	N/A
1504 001 COV	COVER SHEET	N/A
1503 201 SP	SITE PLAN	E
1503 202 DEM	DEMOLITION	D
1503 203 L+N	LEGEND AND NOTES 1	E
1503 204 L+N	LEGEND AND NOTES 2	D
1503 301 GA	GENERAL ARRANGEMENTS 1	E
1503 302 GA	GENERAL ARRANGEMENTS 2	D
1504 303 GA	GENERAL ARRANGEMENTS 3	D
1504 304 GA	GENERAL ARRANGEMENTS 4	D
1505 305 GA	GENERAL ARRANGEMENTS 5	D
1505 306 GA	GENERAL ARRANGEMENTS 6	D
1506 307 GA	GENERAL ARRANGEMENTS 7	D
1503 401 GR	GRADING 1	D
1503 402 GR	GRADING 2	D
1503 403 GR	GRADING 3	D
1504 404 GR	GRADING 4	D
1504 405 GR	GRADING 5	D
1504 406 GR	GRADING 6	D
1505 407 GR	GRADING 7	D
1503 501 JO	JOINTING 1	D
1503 502 JO	JOINTING 2	D
1503 601 PP	PLANTING PLAN 1	D
1503 602 PP	PLANTING PLAN 2	D
1503 603 PP	PLANTING PLAN 3	D
1503 604 PP	PLANTING PLAN 4	D
1503 605 PP	PLANTING PLAN 5	D
1503 606 PP	PLANTING PLAN 6	D
1503 607 PP	PLANTING PLAN 7	D
1503 701 DP	DETAIL PLAN 1	D
1503 702 PEIZ	PLAYGROUND EQUIPMENTN IMPACT ZONES	A
1501 801 DE	DETAILS 1	D
1502 802 DE	DETAILS 2	D



50519045 C210 SFP	SURFACE FINISHES PLAN	C
50519045 C230 TSP	TYPICAL SECTIONS PLAN	A
50519045 C200-TCD-1	TRAFFIC CONTROL DEVICES	C
ELECTRICAL SERVICES		
19008-E1	KEY PLAN LEGEND NOTES AND DETAILS	6
19008-E2	SITE PLAN	6
FLEETWOOD URBAN		
11083	COOMBS SHELTERS	A
10362	COOMBS PLAY BOMMY KNOCKERS	B
PS118430-BW4	COOMBS PRELIMINARY ENGINEERING DWGS	A
LYPA		
L032300_PS_A3_2000821	COOMBS NEST	N/A
IRRIGATION		
2067-I-01-01	IRRIGATION	G

EDGEWORTH PARADE PLAYGROUND COOMBS - B12 S52

FOR TENDER

DRAWING REGISTER

LANDSCAPE WORKS

DWG#	TITLE	DATE	REVISION
1503 - 000	COVER PAGE	31.03.21	N/A
1503 - 001	COVER PAGE (CONTINUED)	31.03.21	N/A
1503 - 201	SITE PLAN	31.03.21	F
1503 - 202	DEMOLITION PLAN	24.02.21	D
1503 - 203	LEGENDS + NOTES 1	31.03.21	F
1503 - 204	LEGENDS + NOTES 2	24.02.21	D
1503 - 301	GENERAL ARRANGEMENTS PLAN 1	31.03.21	F
1503 - 302	GENERAL ARRANGEMENTS PLAN 2	31.03.21	E
1503 - 303	GENERAL ARRANGEMENTS PLAN 3	24.02.21	D
1503 - 304	GENERAL ARRANGEMENTS PLAN 4	31.03.21	E
1503 - 305	GENERAL ARRANGEMENTS PLAN 5	31.03.21	E
1503 - 306	GENERAL ARRANGEMENTS PLAN 6	24.02.21	D
1503 - 307	GENERAL ARRANGEMENTS PLAN 7	24.02.21	D
1503 - 401	GRADING PLAN 1	24.02.21	D
1503 - 402	GRADING PLAN 2	31.03.21	E
1503 - 403	GRADING PLAN 3	24.02.21	D
1503 - 404	GRADING PLAN 4	24.02.21	D
1503 - 405	GRADING PLAN 5	31.03.21	E
1503 - 406	GRADING PLAN 6	24.02.21	D
1503 - 407	GRADING PLAN 7	24.02.21	D
1503 - 501	JOINTING PLAN 1	31.03.21	E
1503 - 502	JOINTING PLAN 2	24.02.21	D
1503 - 601	PLANTING PLAN 1	24.02.21	D
1503 - 602	PLANTING PLAN 2	31.03.21	E
1503 - 603	PLANTING PLAN 3	24.02.21	D
1503 - 604	PLANTING PLAN 4	24.02.21	D
1503 - 605	PLANTING PLAN 5	31.03.21	E
1503 - 606	PLANTING PLAN 6	24.02.21	D
1503 - 607	PLANTING PLAN 7	24.02.21	D
1503 - 701	DETAIL PLAN 1	24.02.21	D
1503 - 702	PLAYGROUND EQUIPMENT IMPACT ZONES	24.02.21	A
1503 - 801	DETAILS 1	24.02.21	D
1503 - 802	DETAILS 2	24.02.21	D
1503 - 803	DETAILS 3	24.02.21	D
1503 - 804	DETAILS 4	24.02.21	B
1503 - 805	DETAILS 5	24.02.21	B
1503 - 806	DETAILS 6	24.02.21	B
1503 - 807	DETAILS 7	24.02.21	B
1503 - 808	DETAILS 8	24.02.21	A
1503 - 809	DETAILS 9	24.02.21	A
1503 - 810	DETAILS 10	24.02.21	A
1503 - 811	DETAILS 11	24.02.21	A
1503 - 812	DETAILS 12	24.02.21	A
1503 - 813	DETAILS 13	24.02.21	A
1503 - 814	DETAILS 14	24.02.21	A
1503 - 815	DETAILS 15	24.02.21	A
1503 - 816	DETAILS 16	24.02.21	A

LANDSCAPE WORKS

DWG#	TITLE	DATE	REVISION
1503 - 817	DETAILS 17	24.02.21	A
1503 - 851	PERSPECTIVE 1	24.02.21	E
1503 - 852	PERSPECTIVE 2	24.02.21	E
1503 - 901	MATERIALS 1 - PROPRIETARY PLAY EQUIPMENT	24.02.21	E
1503 - 902	MATERIALS 2 - PROPRIETARY PLAY EQUIPMENT	24.02.21	E
1503 - 903	MATERIALS 3 - PROPRIETARY PLAY EQUIPMENT	24.02.21	B
1503 - 904	MATERIALS 4 - PROPRIETARY FURNITURE	24.02.21	E
1503 - 905	MATERIALS 5 - SURFACES + MATERIALS	24.02.21	E
1503 - 906	MATERIALS 6 - SURFACES + MATERIALS	24.02.21	E
1503 - 907	MATERIALS 7 - SURFACES + MATERIALS	24.02.21	E
1503 - 908	MATERIALS 8 - SURFACES + MATERIALS	24.02.21	E
1503 - 909	MATERIALS 9 - SURFACES + MATERIALS	24.02.21	E
1503 - 910	MATERIALS 10 - SURFACES + MATERIALS	24.02.21	E
1503 - 911	MATERIALS 11 - PLAY SCULPTURE	24.02.21	A

FOR CONTINUATION OF DRAWING SCHEDULE REFER DRAWING 1503 001

LANDSCAPE ARCHITECT

redbox design group

02 6280 4949 (toll)
 inbox@redboxdesigngroup.com.au
 35 Kennedy Street Kingston ACT
 PO Box 4574 Kingston ACT 2604
 redboxdesigngroup.com.au

CLIENT



ACT
Government

Suburban Land
Agency

EDGEWORTH PARADE PLAYGROUND COOMBS - B12 S52

FOR TENDER

DRAWING REGISTER (CONTINUED)

CIVIL WORKS

DWG#	TITLE	DATE	REVISION
50519045 - C100 - CS	COVER SHEET, LOCALITY PLAN AND DRAWING LIST	04.12.20	A
50519045 - C110 - GN	GENERAL NOTES AND LEGEND	04.12.20	A
50519045 - C120-SP	SITE PLAN	04.12.20	A
50519045 - C130-GA	GENERAL ARRANGEMENT PLAN ROAD MODIFICATIONS	04.12.20	A
50519045-C140-DM	DEMOLITION PLAN	04.12.20	A
50519045-C160-AL	ALIGNMENT PLAN	04.12.20	A
50519045-C165-LS	LONGITUDINAL SECTION PATH SA 01 SHEET 1 OF 7	04.12.20	A
50519045-C166-LS	LONGITUDINAL SECTION PATH SA 02 SHEET 2 OF 7	04.12.20	A
50519045-C167-LS	LONGITUDINAL SECTION PATH SA 03 SHEET 3 OF 7	04.12.20	A
50519045-C168-LS	LONGITUDINAL SECTION PATH SA 04 SHEET 4 OF 7	04.12.20	A
50519045-C169-LS	LONGITUDINAL SECTION PATH SA 05 SHEET 5 OF 7	04.12.20	A
50519045-C170-LS	LONGITUDINAL SECTION PATH SA 06 SHEET 6 OF 7	04.12.20	A
50519045-C171-LS	LONGITUDINAL SECTION PATH SA 07 SHEET 7 OF 7	04.12.20	A
50519045-C180-ES-1	EROSION AND SEDIMENT CONTROL PLAN SHEET 1 OF 2	04.12.20	A
50519045-C181-ES-2	EROSION AND SEDIMENT CONTROL NOTES AND DETAILS SHEET 2 OF 2	04.12.20	A
50519045-C190-TTM-1	TEMPORARY TRAFFIC MANAGEMENT PLAN SHEET 1 OF 2	04.12.20	A
50519045-C191-TTM-1	TEMPORARY TRAFFIC MANAGEMENT PLAN SHEET 2 OF 2	04.12.20	A
50519045-C200-TCD-1	TRAFFIC CONTROL DEVICES	04.12.20	A
50519045-C210-SFP	SURFACE FINISHES PLAN	04.12.20	A
50519045-C230-TSP	TYPICAL SECTIONS PLAN	04.12.20	A

ELECTRICAL SERVICES

DWG#	TITLE	DATE	REVISION
19008 - E1	KEY PLAN, LEGEND, NOTES & DETAILS	19.02.21	6
19008 - E2	SITE PLAN	19.02.21	6

FLEETWOOD URBAN

DWG#	TITLE	DATE	REVISION
11083	COOMBS SHELTERS	28.08.20	A
10362	COOMBS PLAY	28.08.20	B
PS118430-BW4	COOMBS PRELIM ENGINEERING	28.08.20	A
1503 - 912	PLAY STRUCTURE APPLIED GRAPHIC 1	24.02.21	A
1503 - 913	PLAY STRUCTURE APPLIED GRAPHIC 2	24.02.21	A

LYP A

DWG#	TITLE	DATE	REVISION
L032300_PS_A3_200821	COOMBS NEST	28.08.20	N/A

IRRIGATION

DWG#	TITLE	DATE	REVISION
2067-I-01-01	IRRIGATION LAYOUT	29.03.21	G

LANDSCAPE ARCHITECT

redbox design group

02 6280 4949 (toll)
 inbox@redboxdesigngroup.com.au
 35 Kennedy Street Kingston ACT
 PO Box 4574 Kingston ACT 2604
 redboxdesigngroup.com.au



CLIENT

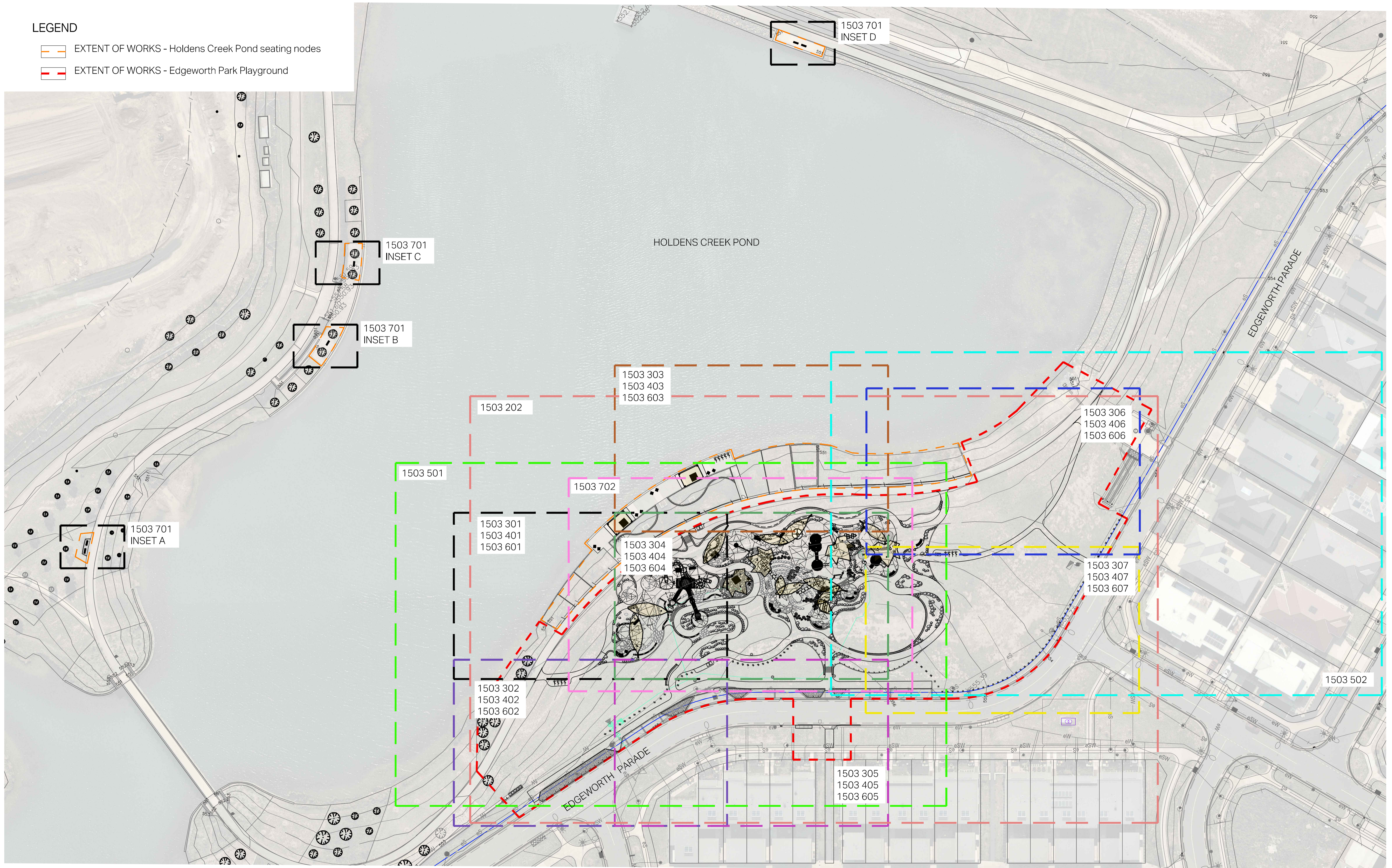


ACT
Government

Suburban Land
Agency

LEGEND

-  EXTENT OF WORKS - Holdens Creek Pond seating nodes
-  EXTENT OF WORKS - Edgeworth Park Playground







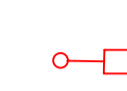
HOLDENS CREEK POND

EXISTING CONCRETE FOOTPATH TO BE REMOVED

EXISTING PAVEMENT TO BE REMOVED AND REINSTALLED AS PER GENERAL ARRANGEMENTS PLANS. PAVING REMOVED TO ACCOMMODATE SHELTER FOOTINGS

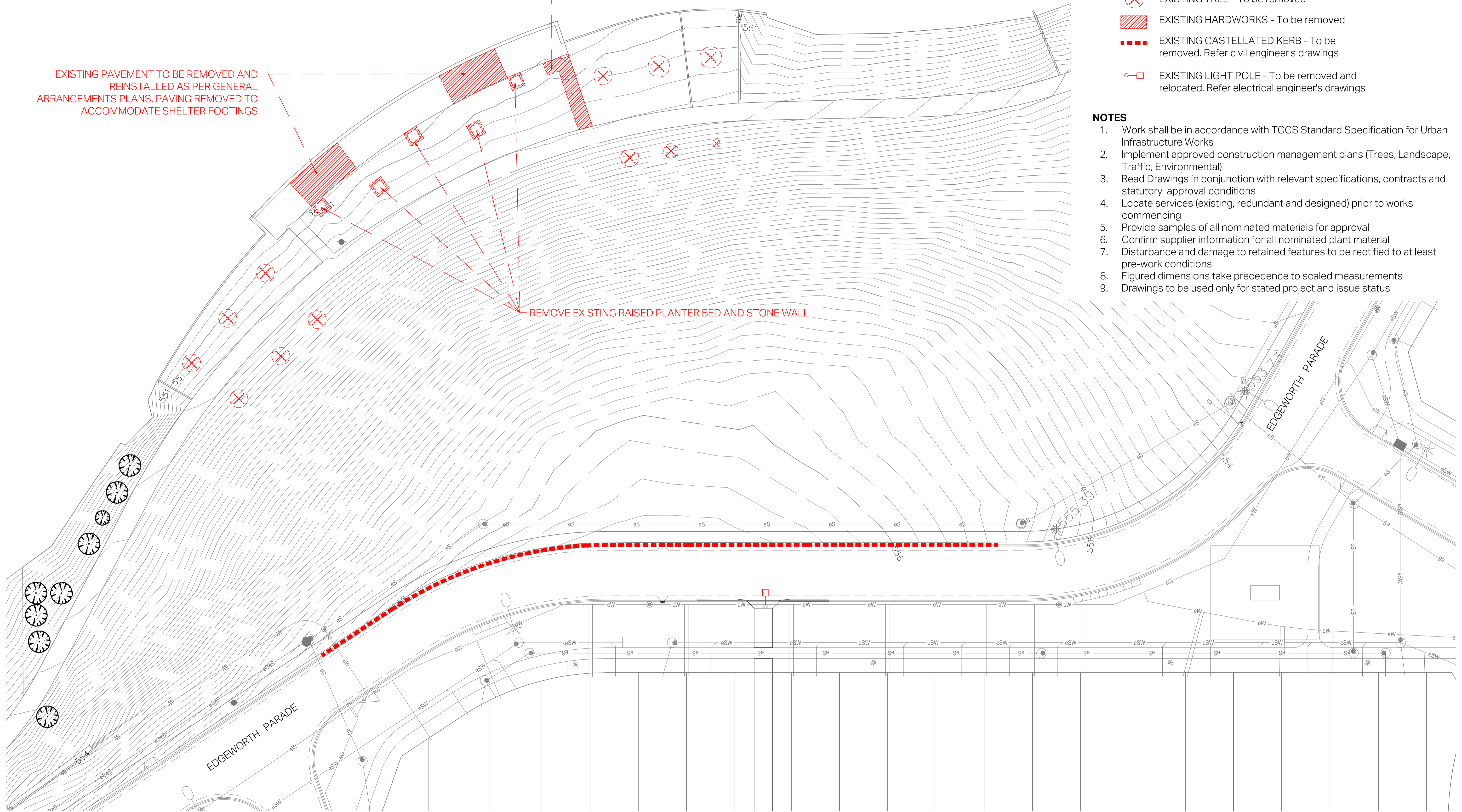
REMOVE EXISTING RAISED PLANTER BED AND STONE WALL

LEGEND

-  EXISTING TREE - To be retained
-  EXISTING TREE - To be removed
-  EXISTING HARDWORKS - To be removed
-  EXISTING CASTELLATED KERB - To be removed. Refer civil engineer's drawings
-  EXISTING LIGHT POLE - To be removed and relocated. Refer electrical engineer's drawings

NOTES

1. Work shall be in accordance with TCCS Standard Specification for Urban Infrastructure Works
2. Implement approved construction management plans (Trees, Landscape, Traffic, Environmental)
3. Read Drawings in conjunction with relevant specifications, contracts and statutory approval conditions
4. Locate services (existing, redundant and designed) prior to works commencing
5. Provide samples of all nominated materials for approval
6. Confirm supplier information for all nominated plant material
7. Disturbance and damage to retained features to be rectified to at least pre-work conditions
8. Figured dimensions take precedence to scaled measurements
9. Drawings to be used only for stated project and issue status



GENERAL ARRANGEMENTS PLAN - 300

LEGEND

	EXISTING TREE - To be retained	
	MULCHED GARDEN BED - Refer planting schedule	(1-3) 803
	GRASS TYPE 1 - Irrigated grassing	
	GRASS TYPE 2 - Dryland grassing	
	ROOT BARRIER - 600mm depth	
PAVING		
	PAVING TYPE 1 - Concrete	(1) 801
	PAVING TYPE 2 - Concrete	(1) 801
	PAVING TYPE 3 - Stone paving	(2) 801
	PAVING TYPE 4 - Decomposed granite gravel	(3) 801
	SOFTFALL TYPE 1 - Rubber	(7-8) 801
	SOFTFALL TYPE 2 - Organic	(9) 801
	SOFTFALL TYPE 3 - Sand	(10) 801
	RUBBER FOOTHOLDS	(11) 801
STAIRS / STEPPERS		
	STAIRS TYPE 1 - Insitu concrete	(1-3) 804
	STAIRS TYPE 2 - Insitu concrete	(1-6) 805 (1-4) 806
	STAIRS TYPE 3 - Precast concrete steps	(1) 807
	STAIRS TYPE 4 - Timber scramble steppers	(1-2) 808
	STAIRS TYPE 5 - Stone scramble steppers	(5) 806
	TIMBER LOG STEPPER	(5) 803
EDGING, TERRACING + WALLS		
	EDGE TYPE 1 - 150mm wide concrete edge	(1) 802 (7) 802
	EDGE TYPE 2 - Sandstone terracing	(2) 802
	EDGE TYPE 3 - Informal stone	(3) 802
	EDGE TYPE 4 - Timber steps / terracing	(2) 807
	EDGE TYPE 5 - Light pole mowing collar	(4) 802
	WALL TYPE 1 - Concrete retaining	(5) 802
	WALL TYPE 2 - Informal boulder	(6) 802
FURNITURE		
	PROPRIETARY FURNITURE - Picnic Setting	(1-2) 813 (1) 904
	PROPRIETARY FURNITURE - Bench	(3) 813 (1) 814 (2) 904
	PROPRIETARY FURNITURE - Curved bench	(2-3) 813 (1) 814 (3) 904
	PROPRIETARY FURNITURE - Deck chair	(1-2) 813 (4) 904
	PROPRIETARY FURNITURE - Bin enclosure	(1-2) 814 (5) 904

	PROPRIETARY FURNITURE - Bench	(3) 815 (6) 904
	PROPRIETARY FURNITURE - Barbeque	(3) 809 (1) 905
	PROPRIETARY FURNITURE - Bike Rack	(1-2) 816 (7) 904
	PROPRIETARY FURNITURE - Drinking fountain	(2,4) 815 (7) 904
	PROPRIETARY FURNITURE - Bollard	(3-4) 816 (9) 904
	PROPRIETARY FURNITURE - Bollard	(5-6) 816 (10) 904
SIGNAGE + FENCING / SCREENS		
	ENTRY SIGNAGE - Embedded into concrete path	(1-2) 809
	FENCE TYPE 1 - 1200mm high pool fencing	
	PLAY ELEMENT BARRIER - 900mm high timber feature screen	(1-4) 811 (1-4) 812
	GATE TYPE 1 - 975mm wide pool fence gate	
SHADE STRUCTURES		
	PROPRIETARY SHADE STRUCTURE TYPE 1 - Platanus leaf shelter	
	PROPRIETARY SHADE STRUCTURE TYPE 2 - Eucalyptus leaf shelter	
	a. 12.0 x 4.0m	
	b. 9.0 x 3.0m	
	c. 6.0 x 3.0m	
	PROPRIETARY SHADE STRUCTURE TYPE 3 - Street + Garden modular shelter	(1) 817
PLAY EQUIPMENT		
	CUSTOM PLAY EQUIPMENT TYPE 1 - Bird nest	
	CUSTOM PLAY EQUIPMENT TYPE 2 - Bommy Knocker Structure	
	CUSTOM PLAY EQUIPMENT TYPE 3 - Water Play Channel with proprietary play equipment type 15 - weir (PE15)	(1-4) 810 (8) 902 (1) 903
	PROPRIETARY PLAY EQUIPMENT TYPE 1 - Balance beam. Refer materials schedule	(1-3) 901
	a. Balance beam 1	
	b. Balance beam 2	
	c. Balance beam 3	
	PROPRIETARY PLAY EQUIPMENT TYPE 2- Carousel	(4) 901
	PROPRIETARY PLAY EQUIPMENT 3 - Sand table	(5) 901
	PROPRIETARY PLAY EQUIPMENT 4 - Stepped log	(6) 901
	PROPRIETARY PLAY EQUIPMENT 5 - Talking tube	(7) 901
	PROPRIETARY PLAY EQUIPMENT 6 - Rain wheel	(8) 901
	PROPRIETARY PLAY EQUIPMENT TYPE 7 - Swing	(1) 902

	PROPRIETARY PLAY EQUIPMENT TYPE 8 - Embankment tunnel slide. Refer materials schedule	(2) 902
	PROPRIETARY PLAY EQUIPMENT TYPE 9 - Embankment tunnel slide. Refer materials schedule	(3) 903
	PROPRIETARY PLAY EQUIPMENT TYPE 10 - Embankment slide. Refer materials schedule	(4) 902
	PROPRIETARY PLAY EQUIPMENT TYPE 11 - Springer. Refer materials schedule	(5) 902
	PROPRIETARY PLAY EQUIPMENT TYPE 12 - Springer. Refer materials schedule	(6) 902
	PROPRIETARY PLAY EQUIPMENT TYPE 13 - Trampoline. Refer materials schedule	(7) 902
	PROPRIETARY PLAY EQUIPMENT TYPE 14 - Water pump. Refer materials schedule	(1-2) 810 (8) 902 (1) 903
	PROPRIETARY PLAY EQUIPMENT TYPE 15 - Climbing rope. Refer materials schedule	(2,4) 812 (2) 903
	PROPRIETARY PLAY EQUIPMENT TYPE 16 - Eucalyptus leaf shelter with swings	
	PROPRIETARY PLAY EQUIPMENT TYPE 17 - Eucalyptus leaf shelter with swings	
PLAY SCULPTURES		
	PLAY SCULPTURE TYPE 1a - Cosmophone 1	(1,3,4) 911
	PLAY SCULPTURE TYPE 1b - Cosmophone 2	(2-4) 911
	PLAY SCULPTURE TYPE 1c - Cosmic Egg	(3,5) 911

JOINTING PLAN - 500

LEGEND

	DEJ - DOWELLED EXPANSION JOINT (Flexible) - Expansive foam with sleeved dowels as specified	(4) 801
	EJ - EXPANSION JOINT - Expansive foam	(5) 801
	SCJ - SAWN CONTROL JOINT - Sawn joint as detailed	(6) 801
	TRIMMER BARS	

GRADING PLAN - 400

LEGEND

	EXISTING CONTOUR - 100mm contour interval	
	PROPOSED CONTOUR - 100mm contour interval	
	DESIGN SPOT LEVEL	
	Landscape surface level	
	Civil level (Refer civil)	
	Top of wall	
	Bottom of wall	
	Top of stair	
	Bottom of stair	
	Match into existing level	
	Existing level	
	GRADE ARROW - Indicative indication of fall direction and slope grade. Spotheights take precedence, grade indicated to be confirmed against spotheight information	
	SUBSOIL DRAIN - 100mm dia socked subsoil drain	
	STORMWATER DRAIN - 100mm dia PVC pipe	
	SOAKAGE PIT	(6) 803
	STORMWATER PIT	
	TAP - Auto-close spring loaded faucet	(2) 809
	STOP VALVE PIT - Nom 300 x 300 x 450mm	

PLAY EQUIPMENT IMPACT ZONES - 702

LEGEND

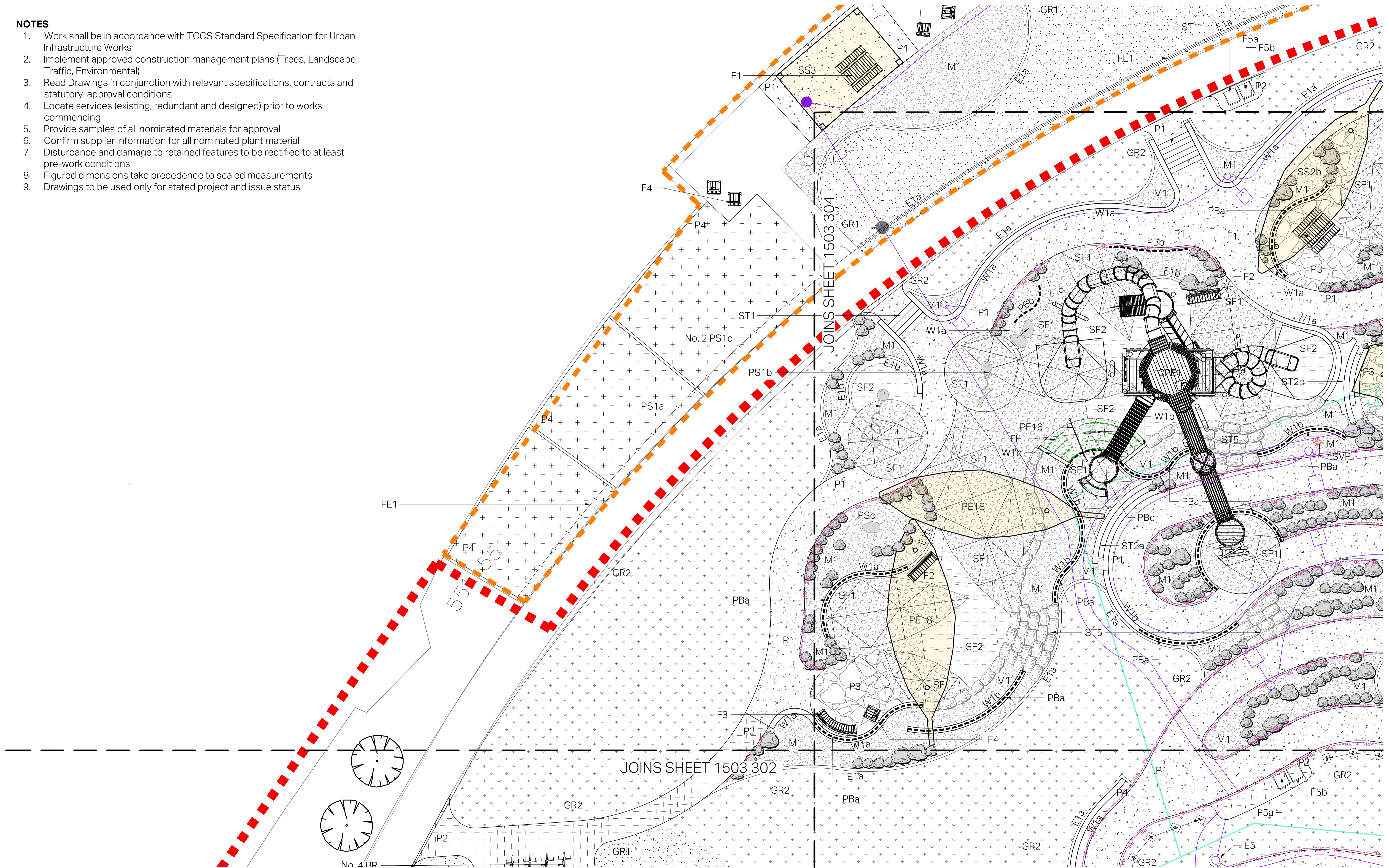
	1.2M IMPACT ZONE - Impact attenuation to suit 1.2m FHO
	1.5M IMPACT ZONE - Impact attenuation to suit 1.5m FHO
	1.7M IMPACT ZONE - Impact attenuation to suit 1.7m FHO
	2.5M IMPACT ZONE - Impact attenuation to suit 2.5m FHO (rubber softfall)
	2.5M IMPACT ZONE - Impact attenuation to suit 2.5m FHO (organic softfall)

PLANT SCHEDULE

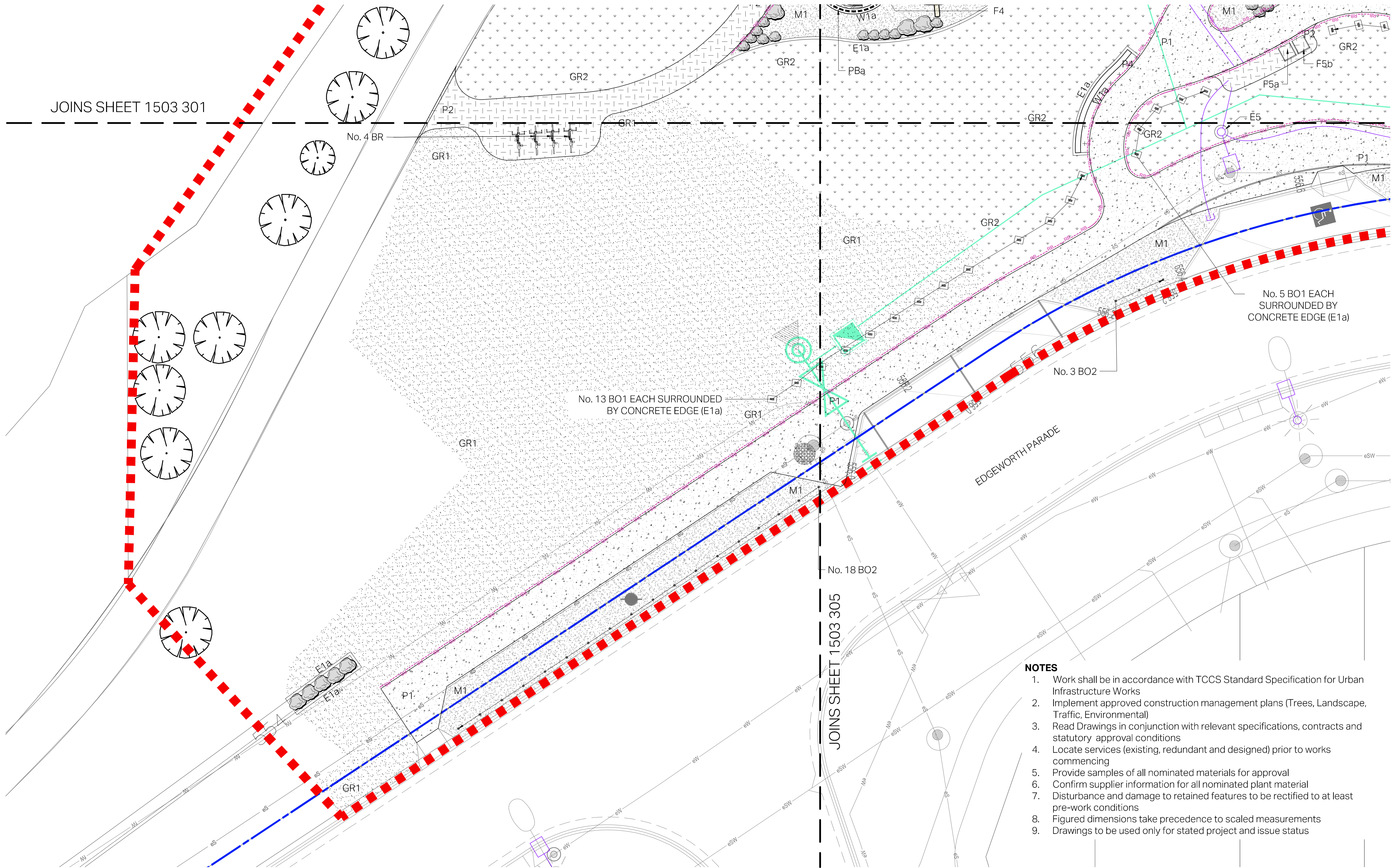
CONIFEROUS TREES						SHRUBS						VINE/ESPALIER					
CODE	BOTANICAL NAME	SUPPLY SIZE	QTY	REMARKS	SYMBOL	CODE	BOTANICAL NAME	SUPPLY SIZE	QTY	REMARKS	SYMBOL	CODE	BOTANICAL NAME	SUPPLY SIZE	QTY	REMARKS	
CED BL3	Cedrus atlantica 'Blue Cascade'	1.5m to 2.0m high	3			ACA COG	Acacia cognata 'Lime Magik'	200mm	3			CLE ASR	Clematis aristata	200mm	11		
TAX DIS	Taxodium distichum	1.5m to 2.0m high	11			ACA CO2	Acacia cognata 'Limelight'	140mm	10			FIC PUM	Ficus pumila	140mm	9		
DECIDUOUS TREES						SHRUBS						GROUND COVERS					
CODE	BOTANICAL NAME	SUPPLY SIZE	QTY	REMARKS	SYMBOL	CODE	BOTANICAL NAME	SUPPLY SIZE	QTY	REMARKS	SYMBOL	CODE	BOTANICAL NAME	SUPPLY SIZE	SPACING	QTY	REMARKS
ACE COL	Acer platanoides 'Columnare'	1.5m to 2.0m high	5			ACA CUL	Acacia cultriformis prostrate form	140mm	23			ALO SEU	Aloe x 'ANDsea' TM	140mm pot	300mm	134	
ACE SNA	Acer x freemanii 'Sienna' TM	1.5m to 2.0m high	13			ACA HOW	Acacia howittii 'Green Wave'	140mm	19			CAR ARM	Carpobrotus glaucescens 'CAR10' TM	140mm pot	400mm	649	
CAT BIG	Catalpa bignonioides	1.5m to 2.0m high	2			ACA PR2	Acacia pravissima 'Lime nugget'	200mm	5			CAR HHH	Carpobrotus rossii 'White Hot'	140mm pot	400mm	36	
FRA AU5	Fraxinus excelsior 'Aurea'	1.5m to 2.0m high	1			BAM GRA	Bambusa textilis gracilis	200mm	47			CHR AP2	Chrysocephalum apiculatum 'Desert Orange'	140mm pot	200mm	218	
LAG K14	Lagerstroemia fauriei 'Kiowa'	1.5m to 2.0m high	15			BAN BLE	Banksia blechnifolia	140mm	59			CHR API	Chrysocephalum apiculatum 'Silver Sunburst'	140mm pot	200mm	179	
LAG WHI	Lagerstroemia x 'Natchez'	1.5m to 2.0m high	11			BAN MAR	Banksia marginata	330mm pot	25			DIA REV	Dianella revoluta 'Big Rev'	140mm pot	300mm	51	
LAG RED	Lagerstroemia x 'Tuscarora'	1.5m to 2.0m high	21			BAN SER	Banksia serrata 'Pygmy Possum'	140mm	127			DYP BIC	Dietes bicolor 'African Gold' TM	140mm pot	400mm	70	
LIQ STY	Liquidambar styraciflua	750Ltr	3			BAN SPI	Banksia spinulosa 'Birthday Candles'	140mm	231			GRE TWD	Grevillea rhyolitica x juniperina 'TWD01' TM	200mm pot	600mm	20	
NYS SYL	Nyssa sylvatica	1.5m to 2.0m high	13			BES REA	Beschorneria yuccoides 'Reality'	200mm	68			HAR V12	Hardenbergia violacea 'Bliss'	140mm pot	300mm	24	
PLA AUG	Platanus orientalis 'Autumn Glory'	1.5m to 2.0m high	17			CAL C12	Callistemon citrinus 'Firebrand'	140mm	10			HAR V10	Hardenbergia violacea 'Miri-Ha-Ha'	140mm pot	300mm	97	
PYR BRA	Pyrus calleryana 'Bradford'	1.5m to 2.0m high	15			CAL CIT	Callistemon citrinus 'White Anzac'	200mm	116			LAV HWU	Lavandula angustifolia 'Dwarf Blue'	140mm pot	300mm	11	
PYR FA2	Pyrus calleryana 'Fauriei'	1.5m to 2.0m high	5			CAL SIE	Callistemon sieberi 'Sugar Candy'	140mm	15			MYO PAR	Myoporum parvifolium 'Fine leaf form'	140mm pot	350mm	99	
QUE PAL	Quercus palustris	2.0m high	3			CAS GLA	Casuarina glauca 'CAS01' TM	200mm	147			MYO PA2	Myoporum parvifolium 'Pink'	140mm pot	400mm	8	
ULM GLA	Ulmus glabra 'Lutescens'	2.0m high	4			CAS GL2	Casuarina glauca 'Shagpile'	140mm	137			MYO RED	Myoporum parvifolium 'Red Leaf Form'	140mm pot	500mm	9	
ULM FMU	Ulmus parvifolia 'Yarralumla clone'	1.5m to 2.0m high	5			COR ALB	Correa alba	140mm	139			POA LAB	Poa labillardieri 'Eskdale'	Virotube	300mm	331	
ZEL MUS	Zelkova serrata 'Musashino'	1.5m to 2.0m high	4			COR PUL	Correa pulchella 'Little Cate'	140mm	65			ROS COR	Rosmarinus officinalis 'Corsican Prostrate'	200mm pot	500mm	117	
NATIVE TREES						SHRUBS						GROUND COVERS					
CODE	BOTANICAL NAME	SUPPLY SIZE	QTY	REMARKS	SYMBOL	CODE	BOTANICAL NAME	SUPPLY SIZE	QTY	REMARKS	SYMBOL	CODE	BOTANICAL NAME	SUPPLY SIZE	SPACING	QTY	REMARKS
ALL VER	Allocasuarina verticillata	200mm Springring	12			CRO EXA	Crowea exalata 'Parrys Hybrid'	140mm	43			THY CO2	Thymus vulgaris	75mm	250mm	165	
BAN INT	Banksia integrifolia	200mm Springring	21			CRO SAL	Crowea saligna	140mm	69			TRA NUT	Trachelospermum asiaticum 'FT01'	140mm pot	600mm	47	
BAN SE2	Banksia serrata	200mm Springring	5			ERE GLA	Eremophila glabra 'Kalbarri Carpet'	140mm	94			TRA JAS	Trachelospermum jasminoides	140mm pot	250mm	877	
CAL VIM	Callistemon viminalis 'Captain Cook'	200mm Springring	6			GRE AQU	Grevillea aquifolium	140mm	4								
EUC CAE	Eucalyptus caesia	1.5 high	24			GRE IAS	Grevillea iaspicula Wee Jasper	200mm	79								
EUC GRE	Eucalyptus gregsoniana	200mm Springring	14			GRE VIC	Grevillea victoriae 'Murray Valley Queen'	140mm	23								
EUC UBC	Eucalyptus leucoxydon 'Euky Dwarf' TM	200mm Springring	3			HAK SAL	Hakea salicifolia	200mm	5								
EUC MAN	Eucalyptus mannifera	200mm Springring	21			LEP COP	Leptospermum polygalifolium 'Copper Glow'	200mm	42								
EUC MA2	Eucalyptus mannifera 'Little Spotty' TM	200mm Springring	2			LEP YAR	Leptospermum polygalifolium 'Yarra River'	200mm	10								
EUC PAU	Eucalyptus pauciflora 'Little Snowman'	200mm Springring	10			LOM HYS	Lomandra hystrix	VIROTUBE	1,401								
MEL AZE	Melia azedarach 'Elite'	1.5m to 2.0m high	4			LOM LON	Lomandra longifolia 'LM300'	VIROTUBE	183								
						MEL PAR	Melaleuca parvistaminea	200mm	3								
						MEL COT	Melaleuca thymifolia 'Cotton Candy'	200mm	68								
						RHA NFH	Rhagodia spinescens 'SAB01' TM	140mm	85								
						WES CIA	Westringia fruticosa 'FlatNFruity'	200mm	157								
						WES MDI	Westringia fruticosa 'Mundi'	200mm	8								

NOTES

1. Work shall be in accordance with TCCS Standard Specification for Urban Infrastructure Works
2. Implement approved construction management plans (Trees, Landscape, Traffic, Environmental)
3. Read Drawings in conjunction with relevant specifications, contracts and statutory approval conditions
4. Locate services (existing, redundant and designed) prior to works commencing
5. Provide samples of all nominated materials for approval
6. Confirm supplier information for all nominated plant material
7. Disturbance and damage to retained features to be rectified to at least pre-work conditions
8. Figured dimensions take precedence to scaled measurements
9. Drawings to be used only for stated project and issue status



JOINS SHEET 1503 301



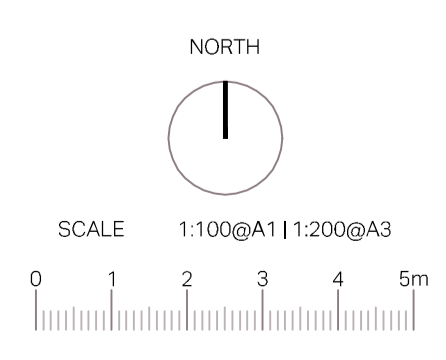
- NOTES**
1. Work shall be in accordance with TCCS Standard Specification for Urban Infrastructure Works
 2. Implement approved construction management plans (Trees, Landscape, Traffic, Environmental)
 3. Read Drawings in conjunction with relevant specifications, contracts and statutory approval conditions
 4. Locate services (existing, redundant and designed) prior to works commencing
 5. Provide samples of all nominated materials for approval
 6. Confirm supplier information for all nominated plant material
 7. Disturbance and damage to retained features to be rectified to at least pre-work conditions
 8. Figured dimensions take precedence to scaled measurements
 9. Drawings to be used only for stated project and issue status

LANDSCAPE ARCHITECT
redbox design group
 02 6280 4949 (toll)
 inbox@redboxdesigngroup.com.au
 Unit 12/285 Canberra Avenue Fyshwick ACT
 PO Box 4574 Kingston ACT 2604
 redboxdesigngroup.com.au

CONSULTANTS
 ENGINEER: Cardno
 LIGHTING: Ahern Consulting Engineers

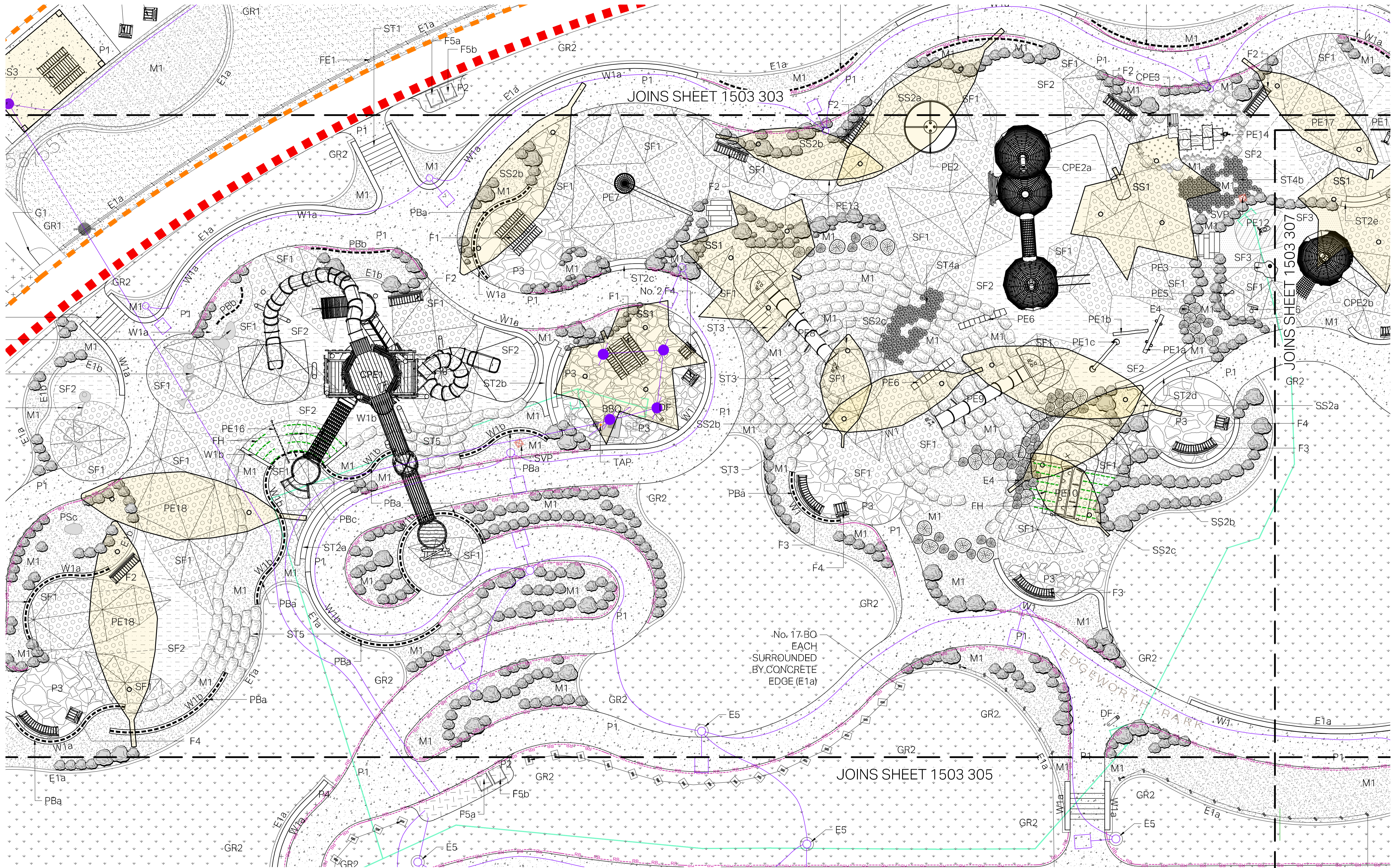


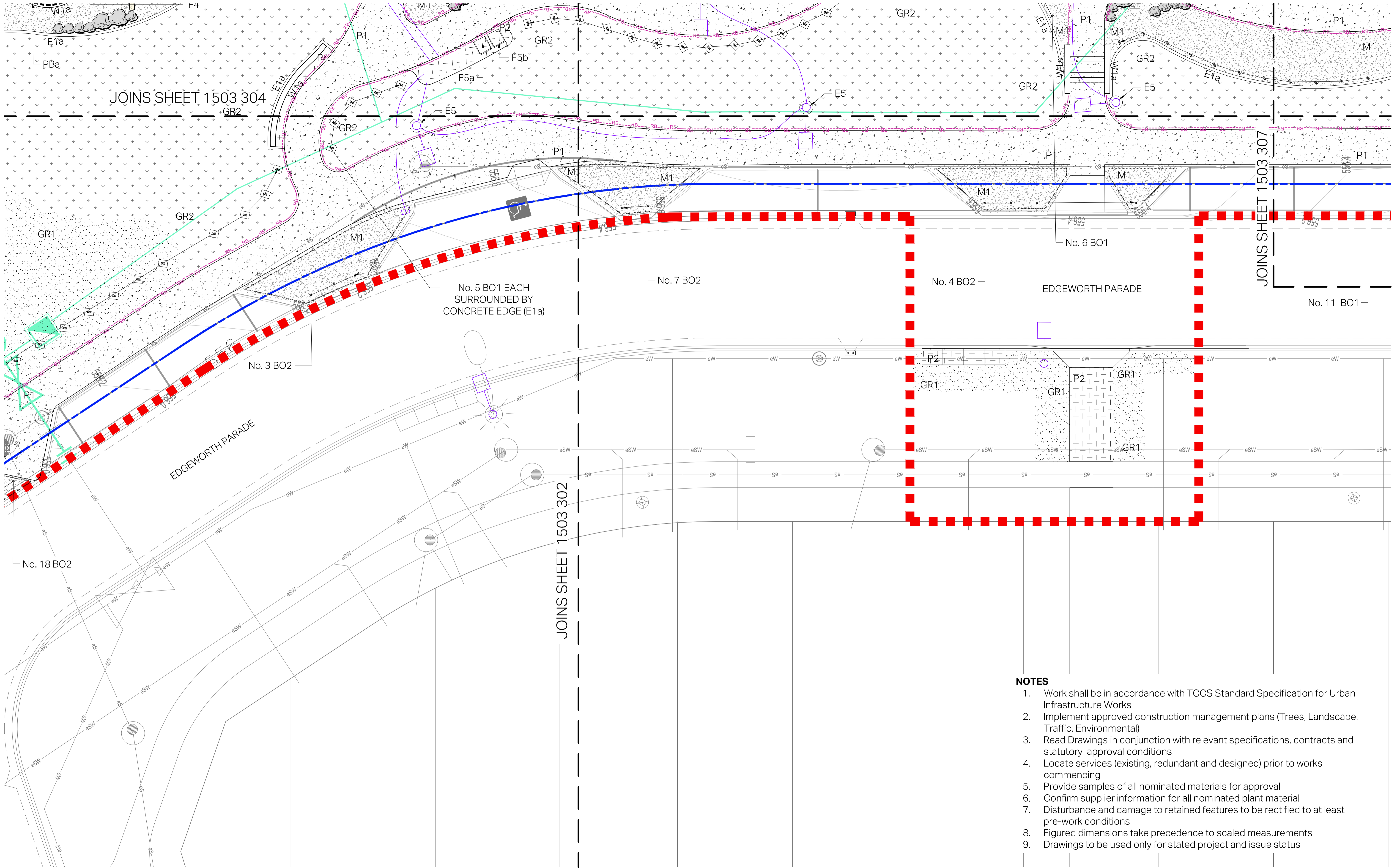
REV	ISSUE	DATE	DRN	CHK
E	FOR TENDER - PRAM CROSSING LOCATION UPDATE	31.03.21	OW	JK
D	FOR TENDER	24.02.21	OW	JK
C	DESIGN REVIEW - 2ND SUBMISSION	16.12.20	OW	JK
B	DESIGN REVIEW	21.09.20	OW	JK
A	75% DR SUBMISSION	01.09.20	OW	JK



PROJECT
EDGEWORTH PARADE PLAYGROUND
 COOMBS - BLOCK 12, SECTION 52

PROJECT No. **1503** SHEET **302** ISSUE **E**
 GENERAL ARRANGEMENTS
 Plan 2





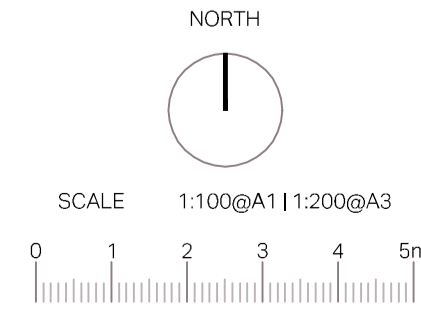
- NOTES**
1. Work shall be in accordance with TCCS Standard Specification for Urban Infrastructure Works
 2. Implement approved construction management plans (Trees, Landscape, Traffic, Environmental)
 3. Read Drawings in conjunction with relevant specifications, contracts and statutory approval conditions
 4. Locate services (existing, redundant and designed) prior to works commencing
 5. Provide samples of all nominated materials for approval
 6. Confirm supplier information for all nominated plant material
 7. Disturbance and damage to retained features to be rectified to at least pre-work conditions
 8. Figured dimensions take precedence to scaled measurements
 9. Drawings to be used only for stated project and issue status

LANDSCAPE ARCHITECT
redbox design group
 02 6280 4949 (toll)
 inbox@redboxdesigngroup.com.au
 Unit 12/285 Canberra Avenue Fyshwick ACT
 PO Box 4574 Kingston ACT 2604
 redboxdesigngroup.com.au

CONSULTANTS
 ENGINEER:
 LIGHTING:
 Cardno
 Ahern Consulting Engineers

CLIENT
 ACT Government
 Suburban Land Agency

REV	ISSUE	DATE	DRN	CHK
E	FOR TENDER - PRAM CROSSING LOCATION UPDATE	31.03.21	OW	JK
D	FOR TENDER	24.02.21	OW	JK
C	DESIGN REVIEW - 2ND SUBMISSION	16.12.20	OW	JK
B	DESIGN REVIEW	21.09.20	OW	JK
A	75% DR SUBMISSION	01.09.20	OW	JK



PROJECT
EDGEWORTH PARADE PLAYGROUND
 COOMBS - BLOCK 12, SECTION 52

PROJECT No. **1503** SHEET **305** ISSUE **E**
 GENERAL ARRANGEMENTS
 Plan 5