



LICENCE ID 1211

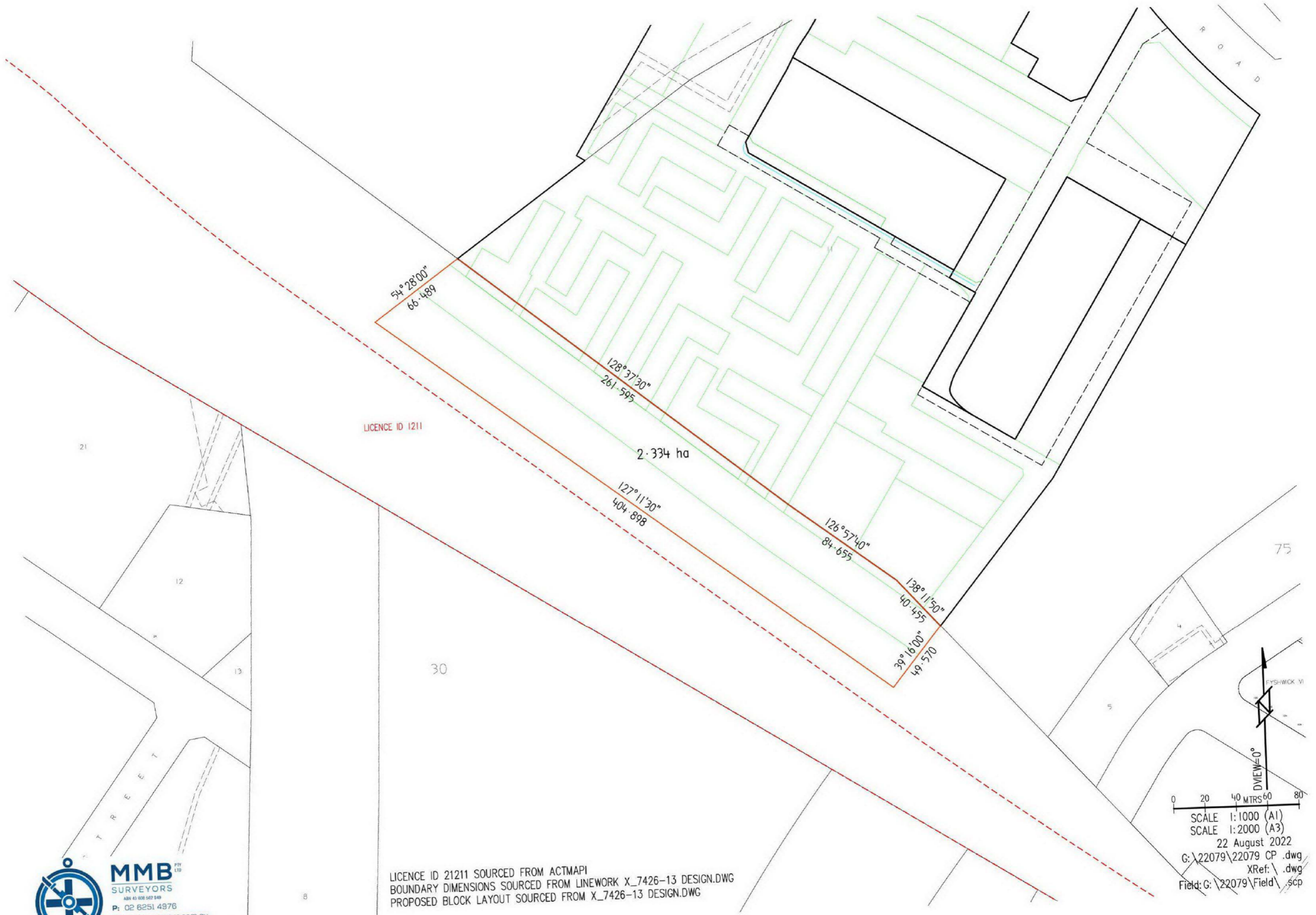
2.334 ha

MMB SURVEYORS
 PTY LTD
 ABN 43 908 502 649
 P: 02 6251 4976
 W: mmbssurveyors.com.au
 E: survey@mmbssurveyors.com.au

8

AERIAL IMAGERY FEBRUARY 2022 SOURCED FROM ACTMAPI
 BOUNDARY DIMENSIONS SOURCED FROM X_7426-13 DESIGN.DWG

SCALE 1:1000 (A1)
 SCALE 1:2000 (A3)
 22 August 2022
 G:\22079\22079 CP .dwg
 XRef: .dwg
 Field: G:\22079\Field\ .scp



54° 28' 00"
66.489

128° 37' 30"
261.595

2.334 ha

127° 11' 30"
404.898

126° 57' 40"
84.655

138° 11' 50"
40.455

39° 16' 00"
49.570

LICENCE ID 1211

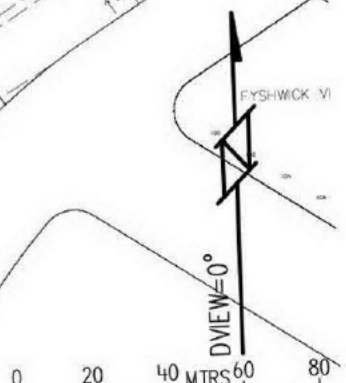
30

75

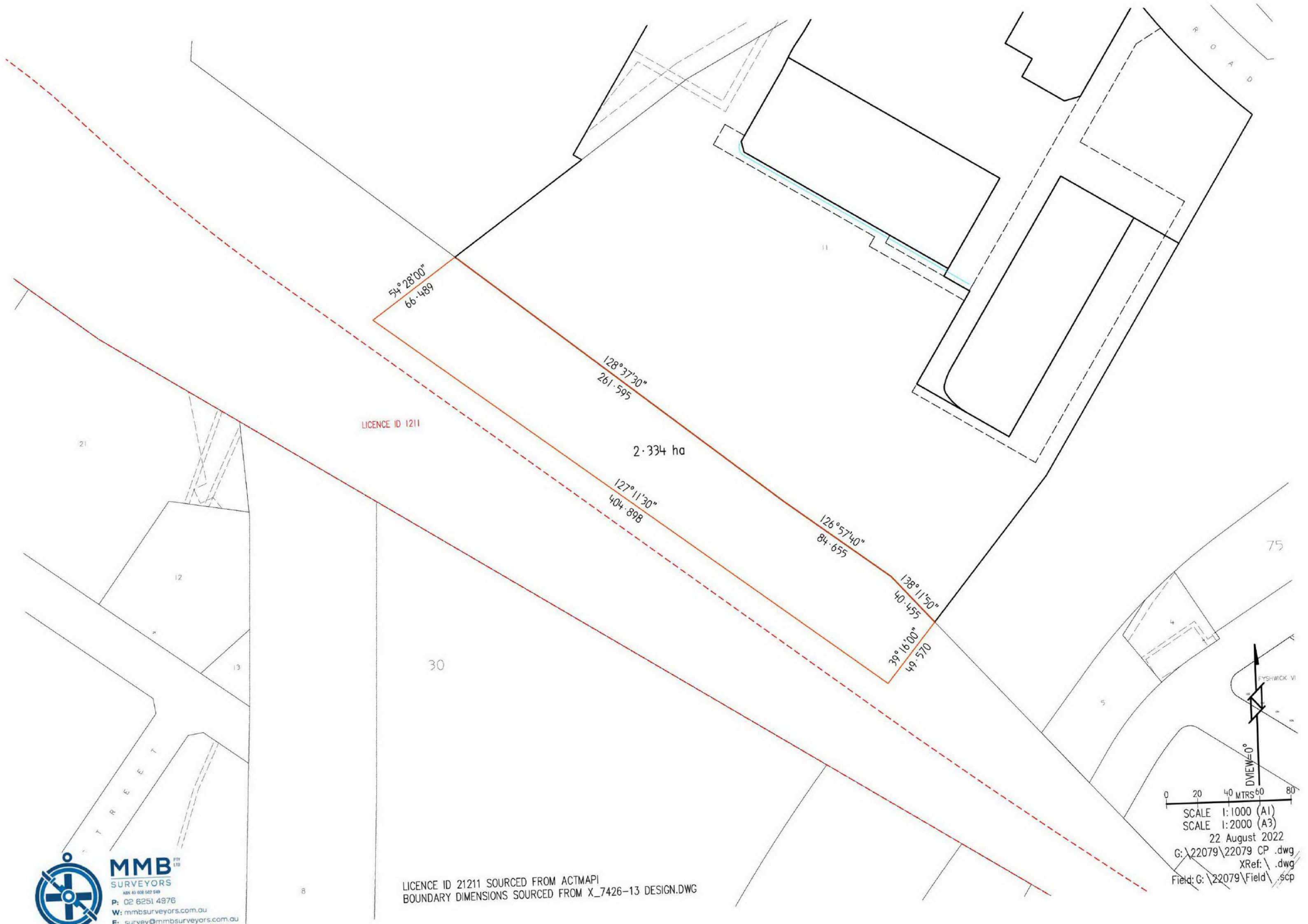


MMB PTY LTD
SURVEYORS
ASB 43 008 502 549
P: 02 6251 4976
W: mmburveyors.com.au
E: survey@mmburveyors.com.au

LICENCE ID 21211 SOURCED FROM ACTMAPI
BOUNDARY DIMENSIONS SOURCED FROM LINEWORK X_7426-13 DESIGN.DWG
PROPOSED BLOCK LAYOUT SOURCED FROM X_7426-13 DESIGN.DWG



SCALE 1:1000 (A1)
SCALE 1:2000 (A3)
22 August 2022
G:\22079\22079 CP .dwg
XRef: \ .dwg
Field: G:\22079\Field\ .scp



LICENCE ID 21211 SOURCED FROM ACTMAPI
 BOUNDARY DIMENSIONS SOURCED FROM X_7426-13 DESIGN.DWG

MMB PTY LTD
 SURVEYORS
 ABN 43 008 542 519
 P: 02 6251 4976
 W: mmbsurveyors.com.au
 E: survey@mmbsurveyors.com.au

SCALE 1:1000 (A1)
 SCALE 1:2000 (A3)
 22 August 2022
 G:\22079\22079 CP .dwg
 XRef: .dwg
 Field: G:\22079\Field\ .scp



MMB
 SURVEYORS
ABN 43 026 162 949
 P: 02 6251 4976
 W: mmbsurveyors.com.au
 E: survey@mmbsurveyors.com.au

DETAIL SURVEY SOURCED FROM ACT SURVEYS 2022020701- DAIRY ROAD FYSHWICK.DWG
 BOUNDARY DIMENSIONS SOURCED FROM X_7426-13 DESIGN.DWG

FYSHWICK VI
 DVIEW=0°
 0 20 40 MTRS 60 80
 SCALE 1:1000 (A1)
 SCALE 1:2000 (A3)
 22 August 2022
 G:\22079\22079 CP .dwg
 XRef: \ .dwg
 Field: G:\22079\Field\ .scp

From: "Sparke, Chris" <Chris.Sparke@act.gov.au>
Sent: 05/10/2022 2:35 AM
To: "Hicks, Katherine" <Katherine.Hicks@act.gov.au>
Subject: FW: LRAC Circulation - Direct Sales Enquiry - Part Block 11 Section 47 Fyshwick - Lolita (ACT)
No 1 & 2 Pty Ltd
Importance: High

OFFICIAL

Hi can you get back to Jyoti please?

**Chris Sparke | Assistant Director | Strategic Projects | Development and Implementation
Environment, Planning and Sustainable Development Directorate | ACT Government
Phone: 02 6205 2404**

Lvl 2, 480 Northbourne Avenue, Dickson ACT 2601
GPO Box 158 Canberra ACT 2601

***I'm currently working remotely and can be contacted by email, phone, MS Teams or Webex**

From: EPD Impact <EPDImpact@act.gov.au>
Sent: Wednesday, 5 October 2022 1:13 PM
To: Sparke, Chris <Chris.Sparke@act.gov.au>
Cc: ESD, LRAC <ESDLRAC@act.gov.au>; Riches, Dominic <Dominic.Riches@act.gov.au>
Subject: RE: LRAC Circulation - Direct Sales Enquiry - Part Block 11 Section 47 Fyshwick - Lolita (ACT) No 1 & 2 Pty Ltd
Importance: High

OFFICIAL

Hi Chris,

The Impact Team is preparing a response to an EDP DA for Blocks 11 & 12 Section 38 and part Block 11 Section 47 Fyshwick.

Could you please advise if the direct sale for part of block 11 section 47 has been finalised? The ACTmapi does not show this as a new block and there is no lease.

Appreciate your response at your earliest possible please.

Regards,
Jyoti

From: ESD, LRAC <ESDLRAC@act.gov.au>
Sent: Tuesday, 8 February 2022 5:13 PM
To: TCCS_DC DevelopmentCoordination <TCCS.DCDevelopmentCoordination@act.gov.au>; EPD Strategic Planning Referrals <EPDStrategicPlanningReferrals@act.gov.au>; Terrplan <Terrplan@act.gov.au>; Diraviam, Thilagam <Thilagam.Diraviam@act.gov.au>; EPAPanningLiaison <EPAPanningLiaison@act.gov.au>; Harmer, Sharon <Sharon.Harmer@act.gov.au>; Heritage <Heritage@act.gov.au>; EPD Impact <EPDImpact@act.gov.au>; EmergencyManagement <EmergencyManagement@act.gov.au>; ACTF&R Risk & Planning <ACTF-RRisk-Planning@act.gov.au>; TCCS_LC LandUse <TCCS.LandUse@act.gov.au>; Gell, Chris <Chris.Gell@act.gov.au>; Walters, Daniel <Daniel.WALTERS@act.gov.au>; Kingham, Amy <Amy.Kingham@act.gov.au>; Richardson, Dave <Dave.Richardson@act.gov.au>; Mundy, Graham <Graham.Mundy@act.gov.au>; Weller, Craig <Craig.Weller@act.gov.au>; Deedman <Deedman@act.gov.au>; Cantamessa, Cindy <Cindy.Cantamessa@act.gov.au>; Jeffrey, David <David.Jeffrey@act.gov.au>; Coffey, Patrick

<Patrick.Coffey@act.gov.au>; EDU, School Planning <EDUSchoolPlanning@act.gov.au>;
'WorksApproval@nca.gov.au' <WorksApproval@nca.gov.au>; Oshyer, Aaron <Aaron.Oshyer@act.gov.au>;
ConservatorFloraFauna <ConservatorFloraFauna@act.gov.au>; EPSDD_Sustainability Policy
<EPSDD.SustainabilityPolicy@act.gov.au>; Klein, Liz <Liz.Klein@act.gov.au>; Attridge, Vanessa
<VanessaS.Attridge@act.gov.au>; MPC Cabinet <MPCCabinet@act.gov.au>; ACT Health StrategicInfrastructure
<ACTHealthStrategicInfrastructure@act.gov.au>; IHSS <IHSS@act.gov.au>; CMTEDD, ACTPG Estate Management
<CMTEDDACTPGEstateManagement@act.gov.au>; Cousins, Meagan <Meagan.Cousins@act.gov.au>; Wyatt, Tim
<Tim.Wyatt@act.gov.au>; Brown, Robin <Robin.Brown@act.gov.au>; Paynter, Patrick
<Patrick.Paynter@act.gov.au>; Gianakis, Steven <Steven.Gianakis@act.gov.au>; Gerrard, Darren
<Darren.Gerrard@act.gov.au>; Jamaly, Rumana <Rumana.Jamaly@act.gov.au>; Hicks, Katherine
<Katherine.Hicks@act.gov.au>; Sparke, Chris <Chris.Sparke@act.gov.au>; Finlay, Jennifer
<Jennifer.Finlay@act.gov.au>; ESD, LRAC <ESDLRAC@act.gov.au>; McNamara, Damien
<Damien.McNamara@act.gov.au>; Guzman, Natalia <Natalia.Guzman@act.gov.au>; Landon, Daniel (Health)
<Daniel.Landon@act.gov.au>; Shaw, Tania <Tania.Shaw@act.gov.au>; Anderson, Gordon
<Gordon.Anderson@act.gov.au>; Yamin, Rashed <Rashed.Yamin@act.gov.au>

Cc: [REDACTED]
[REDACTED] 'Hydraulic Asset Acceptance'
<HydraulicAssetAcceptance@iconwater.com.au> <'Hydraulic Asset Acceptance'
<HydraulicAssetAcceptance@iconwater.com.au>; 'networkplanning@evoenergy.com.au'
<networkplanning@evoenergy.com.au> [REDACTED]>;
'F1901142@team.telstra.com' <F1901142@team.telstra.com>

Subject: LRAC Circulation - Direct Sales Enquiry - Part Block 11 Section 47 Fyshwick - Lolita (ACT) No 1 & 2 Pty Ltd

OFFICIAL

Dear LRAC,

LRAC Circulation - Direct Sales - Part Block 11 Section 47 Fyshwick - Lolita (ACT) No 1 & 2 Pty Ltd

Development and Implementation have received a Direct Sale application from the lessees of Blocks 11 & 12 Section 38 Fyshwick (Dairy Road Redevelopment) to acquire a portion of Block 11 Section 47 Fyshwick.

The applicant is proposing to acquire part of Block 11 Section 47 by direct sale to allow for the relocation of services, the provision of car parking, landscaping and recreation uses (e.g. dog park, bmx/mountain bike track, adventure playground) to serve the future residents of Dairy Road – see attached indicative site plan. It will also allow the provision of active travel links and a minor access road (to be handed back to the Territory). The proposed acquisition of the land will allow the long term management of the landscaping/recreation facilities and provide an appropriate interface between Dairy Road and the railway licensed land to the south.

Block 11 Section 47 Fyshwick

Territory Plan – TS22 – Services; Overlay zone - Major Avenue and Approach Routes.

Land Custodian - TCCS – City Presentation.

Block contains the Rail line, which is under licence. D&I have confirmed the area of land requested does not impact on the licence.

The additional land requested is located immediately to the south of Block 11 Section 38 Fyshwick (outlined in yellow) and is approximately 2.4 hectares in size (Blue measured area).

Please see snip below from ACTMAPi of the Territory plan layer over an aerial photograph.



Please provide your comments or special conditions to the Land Requests Advisory Committee (LRAC) inbox ESDLRAC@act.gov.au by COB Monday 23rd of February 2022.

Regards

Andrew Neilsen | Project Officer | Land Strategy
Planning and Urban Policy | Environment, Planning and Sustainable Development Directorate | ACT Government
480 Northbourne Avenue Dickson | GPO Box 158 Canberra ACT 2601 | www.planning.act.gov.au
Phone 02 6205 3615 | andrew.neilsen@act.gov.au
(working remotely)

From: "EPD Impact" <EPDImpact@act.gov.au>
Sent: 05/10/2022 3:11 AM
To: "Hicks, Katherine" <Katherine.Hicks@act.gov.au>
Cc: "Riches, Dominic" <Dominic.Riches@act.gov.au>
Subject: RE: LRAC Circulation - Direct Sales Enquiry - Part Block 11 Section 47 Fyshwick - Lolita (ACT) No 1 & 2 Pty Ltd

OFFICIAL

Hi Kathrine,

Thank you for confirming.

Appreciate your prompt reply.

Regards,
Jyoti

From: Hicks, Katherine <Katherine.Hicks@act.gov.au>
Sent: Wednesday, 5 October 2022 1:43 PM
To: EPD Impact <EPDImpact@act.gov.au>
Cc: Mundy, Graham <Graham.Mundy@act.gov.au>; Marsh, Lynette <Lynette.Marsh@act.gov.au>
Subject: RE: LRAC Circulation - Direct Sales Enquiry - Part Block 11 Section 47 Fyshwick - Lolita (ACT) No 1 & 2 Pty Ltd

OFFICIAL

Hi Jyoti

The direct sale of part Block 11 Section 47 Fyshwick (- Lolita (ACT) No 1 & 2 Pty Ltd) has not finalized yet. A Ministerial Brief is presently with EPSDD executives for consideration, ahead of sending to Minister Gentleman.

Regards

Katherine Hicks
Assistant Director | Development and Implementation | Strategic Projects
Phone: 02 6205 4868 email: Katherine.Hicks@act.gov.au
Environment, Planning and Sustainable Development Directorate | ACT Government
Level 2, 480 Northbourne Avenue, Dickson ACT 2602
GPO Box 158 Canberra ACT 2601 | www.planning.act.gov.au

From: EPD Impact <EPDImpact@act.gov.au>
Sent: Wednesday, 5 October 2022 1:13 PM
To: Sparke, Chris <Chris.Sparke@act.gov.au>
Cc: ESD, LRAC <ESDLRAC@act.gov.au>; Riches, Dominic <Dominic.Riches@act.gov.au>
Subject: RE: LRAC Circulation - Direct Sales Enquiry - Part Block 11 Section 47 Fyshwick - Lolita (ACT) No 1 & 2 Pty Ltd
Importance: High

OFFICIAL

Hi Chris,

The Impact Team is preparing a response to an EDP DA for Blocks 11 & 12 Section 38 and part Block 11 Section 47 Fyshwick.

Could you please advise if the direct sale for part of block 11 section 47 has been finalised? The ACTmapi does not show this as a new block and there is no lease.

Appreciate your response at your earliest possible please.

Regards,
Jyoti

From: ESD, LRAC <ESDLRAC@act.gov.au>

Sent: Tuesday, 8 February 2022 5:13 PM

To: TCCS_DC DevelopmentCoordination <TCCS.DCDevelopmentCoordination@act.gov.au>; EPD Strategic Planning Referrals <EPDStrategicPlanningReferrals@act.gov.au>; Terrplan <Terrplan@act.gov.au>; Diraviam, Thilagam <Thilagam.Diraviam@act.gov.au>; EPAPanningLiaison <EPAPanningLiaison@act.gov.au>; Harmer, Sharon <Sharon.Harmer@act.gov.au>; Heritage <Heritage@act.gov.au>; EPD Impact <EPDImpact@act.gov.au>; EmergencyManagement <EmergencyManagement@act.gov.au>; ACTF&R Risk & Planning <ACTF-RRisk-Planning@act.gov.au>; TCCS_LC LandUse <TCCS.LandUse@act.gov.au>; Gell, Chris <Chris.Gell@act.gov.au>; Walters, Daniel <Daniel.WALTERS@act.gov.au>; Kingham, Amy <Amy.Kingham@act.gov.au>; Richardson, Dave <Dave.Richardson@act.gov.au>; Mundy, Graham <Graham.Mundy@act.gov.au>; Weller, Craig <Craig.Weller@act.gov.au>; Deedman <Deedman@act.gov.au>; Cantamessa, Cindy <Cindy.Cantamessa@act.gov.au>; Jeffrey, David <David.Jeffrey@act.gov.au>; Coffey, Patrick <Patrick.Coffey@act.gov.au>; EDU, School Planning <EDUSchoolPlanning@act.gov.au>; 'WorksApproval@nca.gov.au' <WorksApproval@nca.gov.au>; Oshyer, Aaron <Aaron.Oshyer@act.gov.au>; ConservatorFloraFauna <ConservatorFloraFauna@act.gov.au>; EPSDD_Sustainability Policy <EPSDD.SustainabilityPolicy@act.gov.au>; Klein, Liz <Liz.Klein@act.gov.au>; Attridge, Vanessa <VanessaS.Attridge@act.gov.au>; MPC Cabinet <MPCcabinet@act.gov.au>; ACT Health StrategicInfrastructure <ACTHealthStrategicInfrastructure@act.gov.au>; IHSS <IHSS@act.gov.au>; CMTEDD, ACTPG Estate Management <CMTEDDACTPGestateManagement@act.gov.au>; Cousins, Meagan <Meagan.Cousins@act.gov.au>; Wyatt, Tim <Tim.Wyatt@act.gov.au>; Brown, Robin <Robin.Brown@act.gov.au>; Paynter, Patrick <Patrick.Paynter@act.gov.au>; Gianakis, Steven <Steven.Gianakis@act.gov.au>; Gerrard, Darren <Darren.Gerrard@act.gov.au>; Jamaly, Rumana <Rumana.Jamaly@act.gov.au>; Hicks, Katherine <Katherine.Hicks@act.gov.au>; Sparke, Chris <Chris.Sparke@act.gov.au>; Finlay, Jennifer <Jennifer.Finlay@act.gov.au>; ESD, LRAC <ESDLRAC@act.gov.au>; McNamara, Damien <Damien.McNamara@act.gov.au>; Guzman, Natalia <Natalia.Guzman@act.gov.au>; Landon, Daniel (Health) <Daniel.Landon@act.gov.au>; Shaw, Tania <Tania.Shaw@act.gov.au>; Anderson, Gordon <Gordon.Anderson@act.gov.au>; Yamin, Rashed <Rashed.Yamin@act.gov.au>

Cc: <[REDACTED]>; 'Hydraulic Asset Acceptance' <HydraulicAssetAcceptance@iconwater.com.au> <'Hydraulic Asset Acceptance' <HydraulicAssetAcceptance@iconwater.com.au>; 'networkplanning@evoenergy.com.au' <networkplanning@evoenergy.com.au>; <[REDACTED]>; 'F1901142@team.telstra.com' <F1901142@team.telstra.com>

Subject: LRAC Circulation - Direct Sales Enquiry - Part Block 11 Section 47 Fyshwick - Lolita (ACT) No 1 & 2 Pty Ltd

OFFICIAL

Dear LRAC,

LRAC Circulation - Direct Sales - Part Block 11 Section 47 Fyshwick - Lolita (ACT) No 1 & 2 Pty Ltd

Development and Implementation have received a Direct Sale application from the lessees of Blocks 11 & 12 Section 38 Fyshwick (Dairy Road Redevelopment) to acquire a portion of Block 11 Section 47 Fyshwick.