

 Tuggeranong District

**CATEGORY**


-  Heritage
-  Threatened Fauna
-  Threatened Flora
-  Riparian
-  Reserve
-  Potential Priority Connectivity Areas
-  Potential Habitat Area
-  Conservation Area

**Disclaimer:**  
 The habitat and connectivity layers are indicative only. It is informed by existing datasets, which have known limitations. While all care is taken to ensure accuracy, the ACT Government does not warrant that the map is free from errors.

EPSDD August 2022

# EHW Conservation, Protected Areas & Connectivity: Tuggeranong District

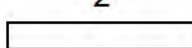




**ACT**  
Government


Environment, Planning and Sustainable Development

2



Kilometers

N



SPOT 6 Satellite Image - March 2022



# EHW Potential Habitat & Connectivity: Weston Creek District



### CATEGORY

-  Potential Habitat Area
-  Potential Priority Connectivity Areas
-  Conservation Area

0.75

Kilometers



SPOT 6 Satellite Image - March 2022

**Disclaimer:**  
The habitat and connectivity layers are indicative only. It is informed by existing datasets, which have known limitations. While all care is taken to ensure accuracy, the ACT Government does not warrant that the map is free from errors.




**ACT**  
Government  
Environment, Planning and Sustainable Development

EPSDD August 2022







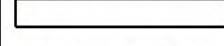
### EHW Protected Biodiversity: Weston Creek District




 Weston Creek District

**CATEGORY**

-  Reserve
-  Riparian
-  Threatened Fauna
-  Threatened Flora

0.75  
 Kilometers

SPOT 6 Satellite Image - March 2022

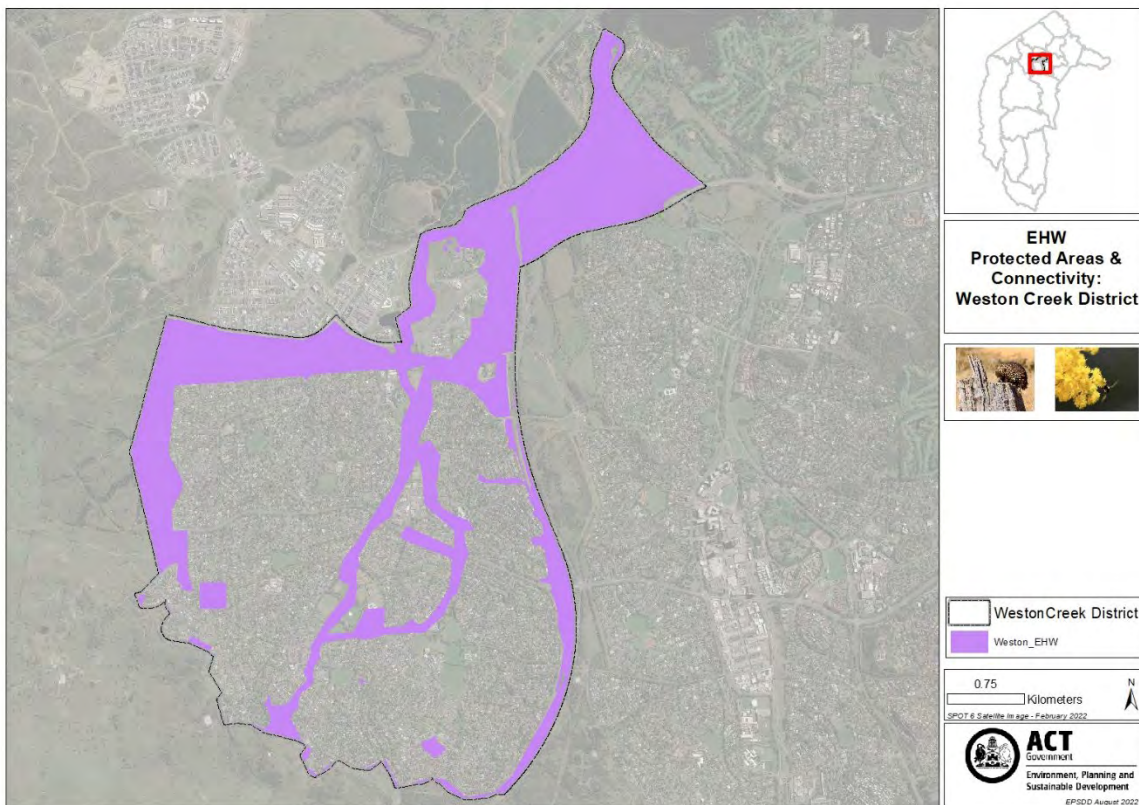


**Disclaimer:**  
The habitat and connectivity layers are indicative only. It is informed by existing datasets, which have known limitations. While all care is taken to ensure accuracy, the ACT Government does not warrant that the map is free from errors.

## Environment, Heritage and Water Conservation and Connectivity Layer – Weston Creek District

This dataset amalgamates the following spatial datasets:

- Threatened and protected species and ecological communities within the Weston Creek district
- Nature reserves within the Weston Creek district
- Registered and recorded heritage places within the Weston Creek district
- Riparian management corridors within the Weston Creek district
- Potential priority habitat connectivity for the Weston Creek district
- Potential habitat conservation areas in the Weston Creek district



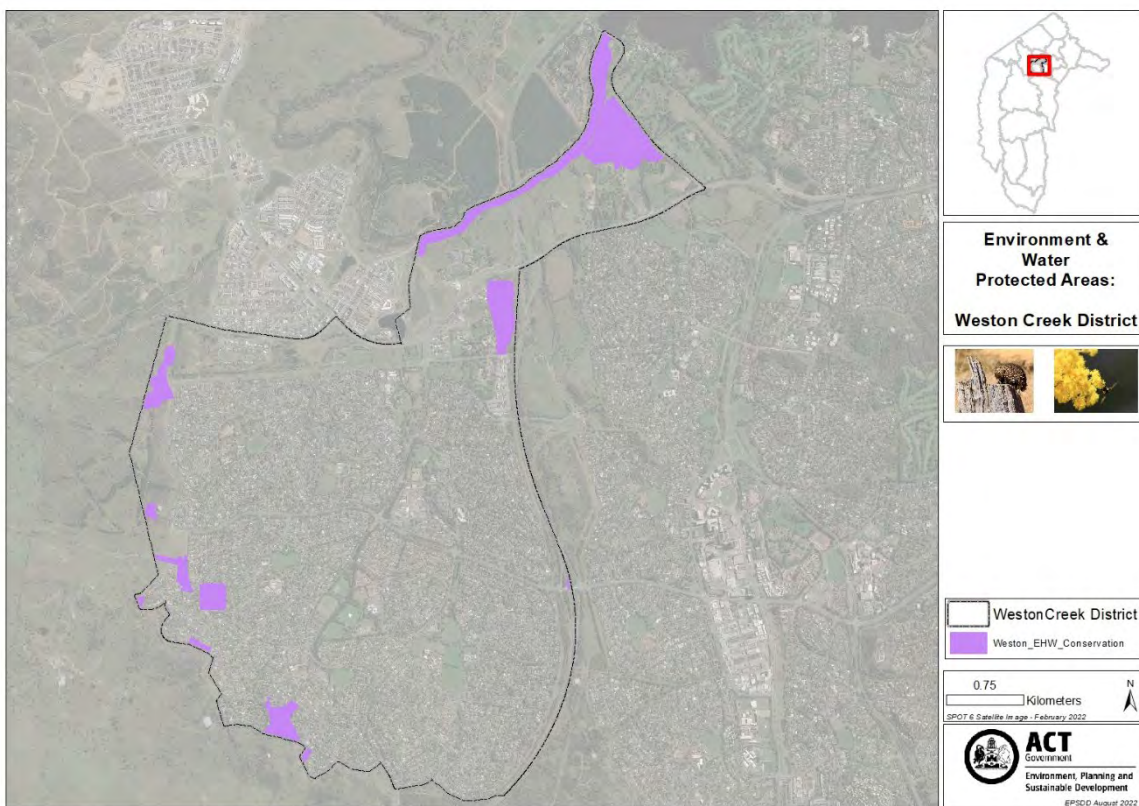
The shapefile “WestonCreek\_EHW\_Protected\_Connect.shp” contents can be filtered by “CATEGORY”:

- Nature Reserves
- Protected Flora
- Protected Fauna
- Heritage
- Riparian Corridor
- Conservation Area
- Potential Priority Habitat
- Potential Priority Connectivity Area

## Threatened & protected ecology

The “Nature Reserve”, “Threatened Flora” and “Threatened Fauna” categories indicate all species, habitat, ecological communities and nature reserves protected under the Nature Conservation Act and/or the EPBC Act, within the Weston Creek district. Development within these zones have statutory restrictions, and consultation with the EPSDD Conservator of Flora and Fauna is required.

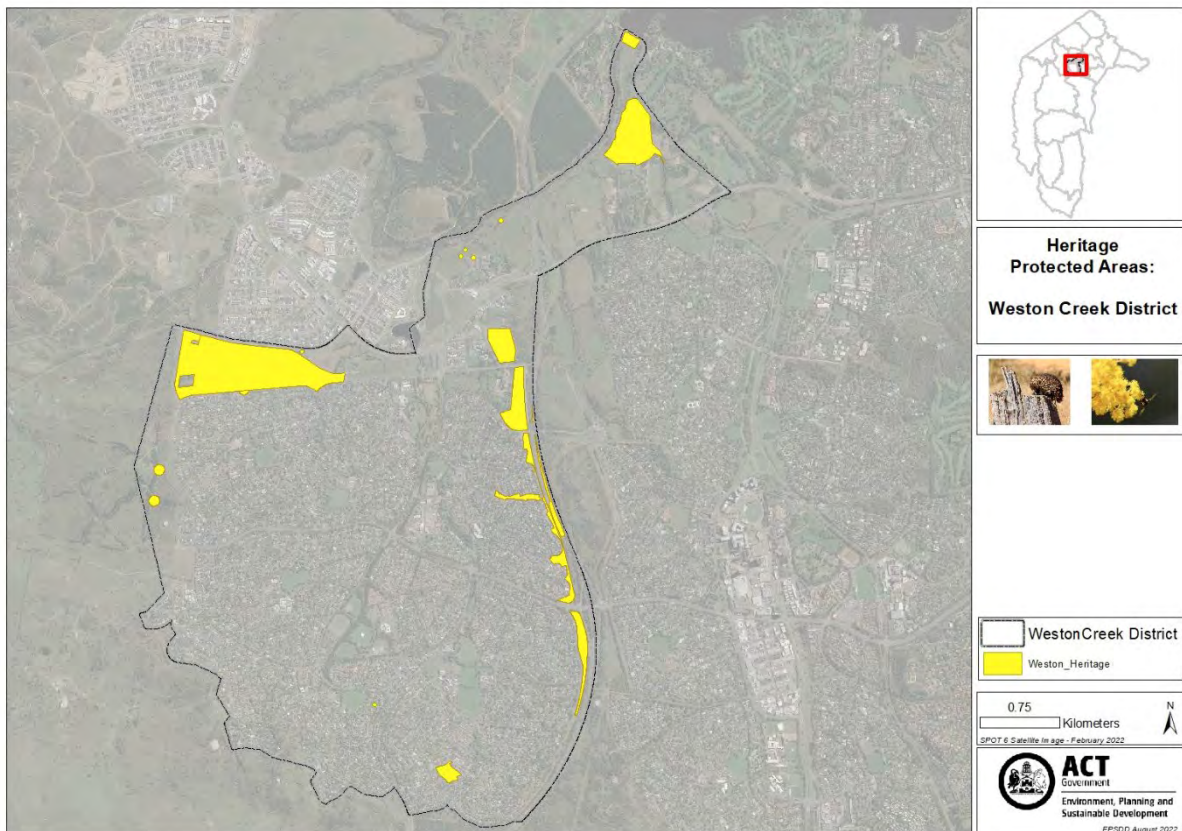
This layer combines verified threatened and protected fauna and flora species habitat and point data obtained from the ACT Wildlife Atlas and Canberra Nature Map, and the ACT Vegetation Map 2018. It does not contain unverified or modelled habitat. An obscuring algorithm was used on threatened wildlife point data, and a spatial buffer of 100m drawn around it to confuse potential sensitive data points and indicate the reach of habitat.



## Heritage Protected Areas

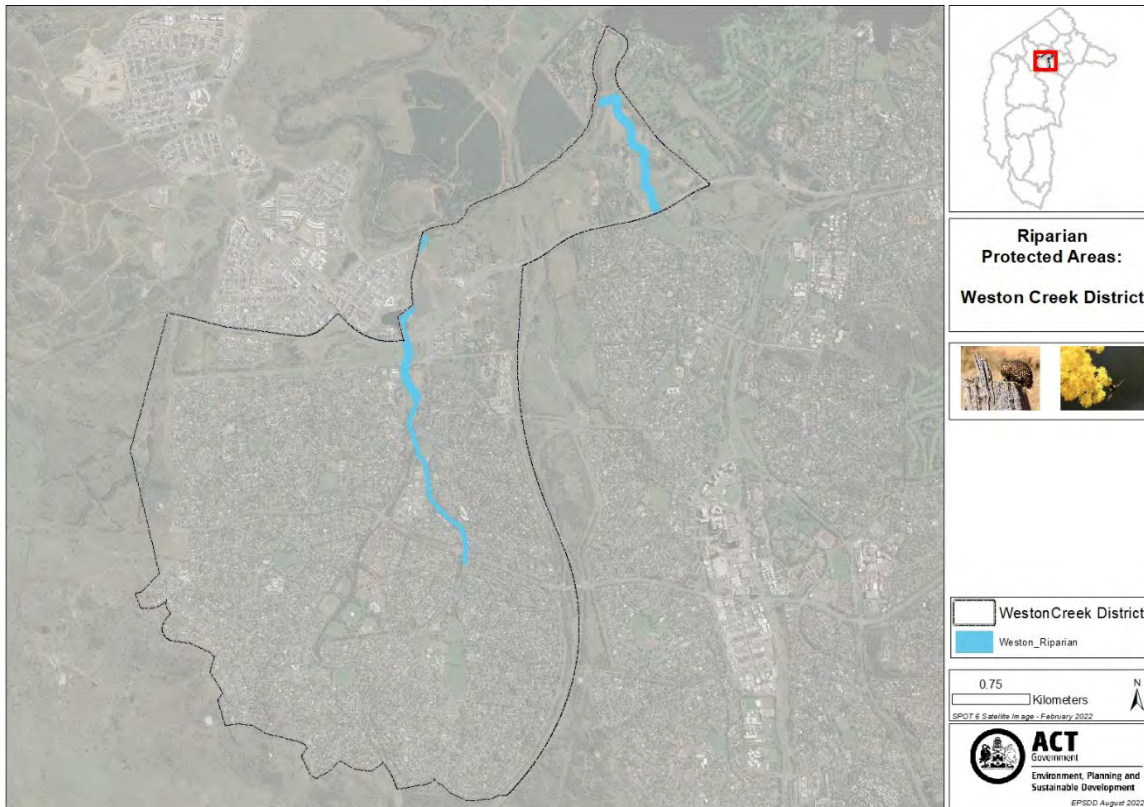
The “Heritage” category identifies registered and recorded heritage places within the Weston Creek district, however, it does not differentiate heritage sites by their relative significance and conservation value. In many instances, the presence of heritage sites does not preclude future development, yet it does require careful planning of new development, as well as heritage assessment and management actions. However, there are also places registered on the ACT Heritage Register of high heritage significance, and Aboriginal places of high cultural significance, conservation of which is required under the Heritage Act.

For example, the University of Canberra campus is identified as containing heritage places, which consist of the registered ‘Student Group 2’ and 10 recorded Aboriginal places. Of these, 2 sites are of high significance, being the heritage buildings and an Aboriginal [REDACTED], and their conservation is required under the Heritage Act. Other sites are also of heritage value and opportunities to conserve sites in open space should be considered as part of future development. Where this is not reasonable practicable, and demonstrated to the satisfaction of the ACT Heritage Council, impact mitigation actions would be required prior to future development.



## Riparian Management Corridor

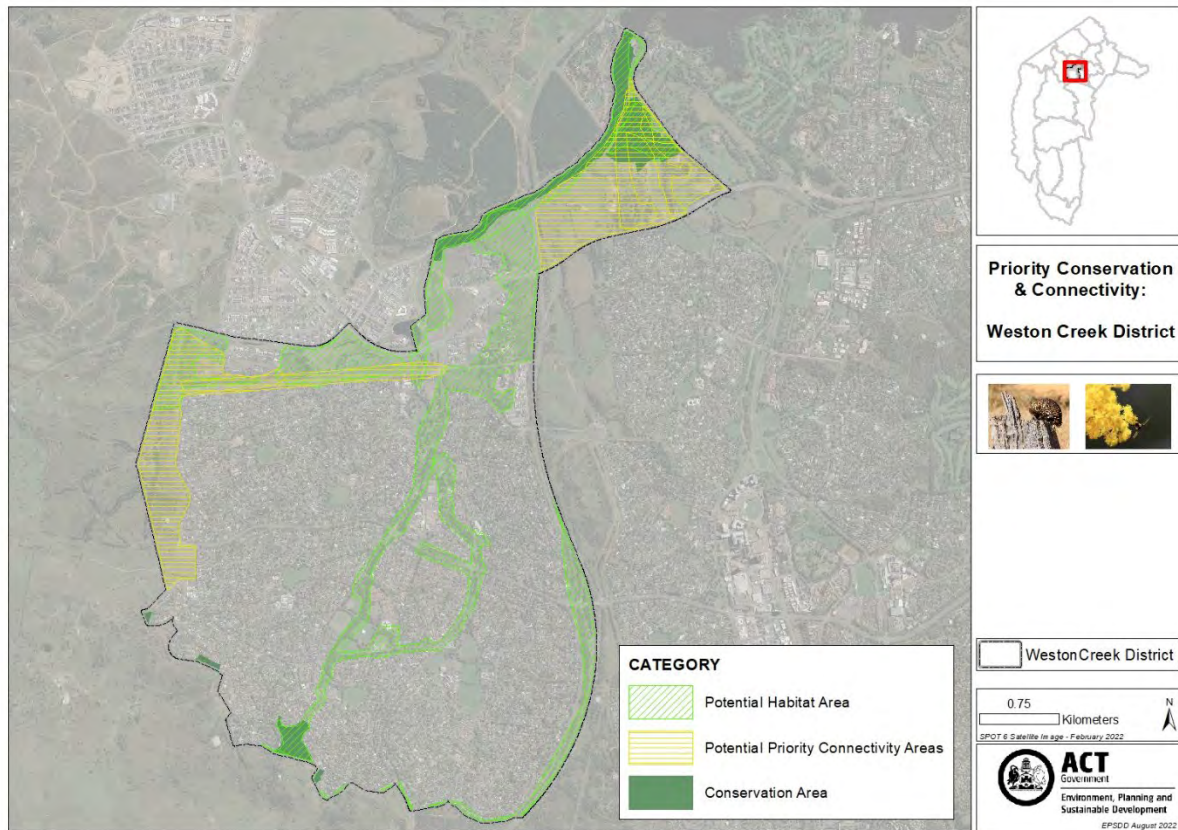
The “Riparian” category identifies riparian corridors in the Weston Creek district. The areas of the map identified for Riparian Corridors are based off the wider of either the 1% AEP flood extent (Annual Exceedance Probability of flood) or the values determined based on the NSWG/Strahler method using stream order. Ovals, Paths and Service Zones can be considered compatible developments within riparian zones as long as consultation is undertaken as part of the planning process.



## Potential Habitat Conservation and Connectivity Areas

The following categories in the shapefile identify potential habitat conservation areas and priority conservation and restoration sites in the Weston Creek:

- Conservation Area
- Potential Habitat Area
- Potential Priority Connectivity Area



This contains generalised outputs from a series of taxa-specific habitat models. These models combine expert-derived estimates of structural habitat requirements, minimum patch sizes, barriers to movement, and the movement capacity of seven wildlife groups with remote-sensing data of those habitat properties (e.g. LiDar vegetation) to map potential habitat and patch connectivity. Potential Habitat Areas provide a generalised spatial layer of potential suitable habitat. It is derived from the combination of habitat modelling for wildlife that are associated with grassland habitat (grassland reptiles), woodland habitat (small- and medium-sized mammals), and/or riparian and aquatic habitat (e.g. frogs, platypus, turtles, and fish). This is potential habitat in the broadest sense as coarse habitat properties (such as the presence of trees) could be modelled with existing data, but equivalent data for fine-scale habitat properties that are important (such as the presence of coarse-woody-debris) do not exist and therefore could not be considered in the current models.

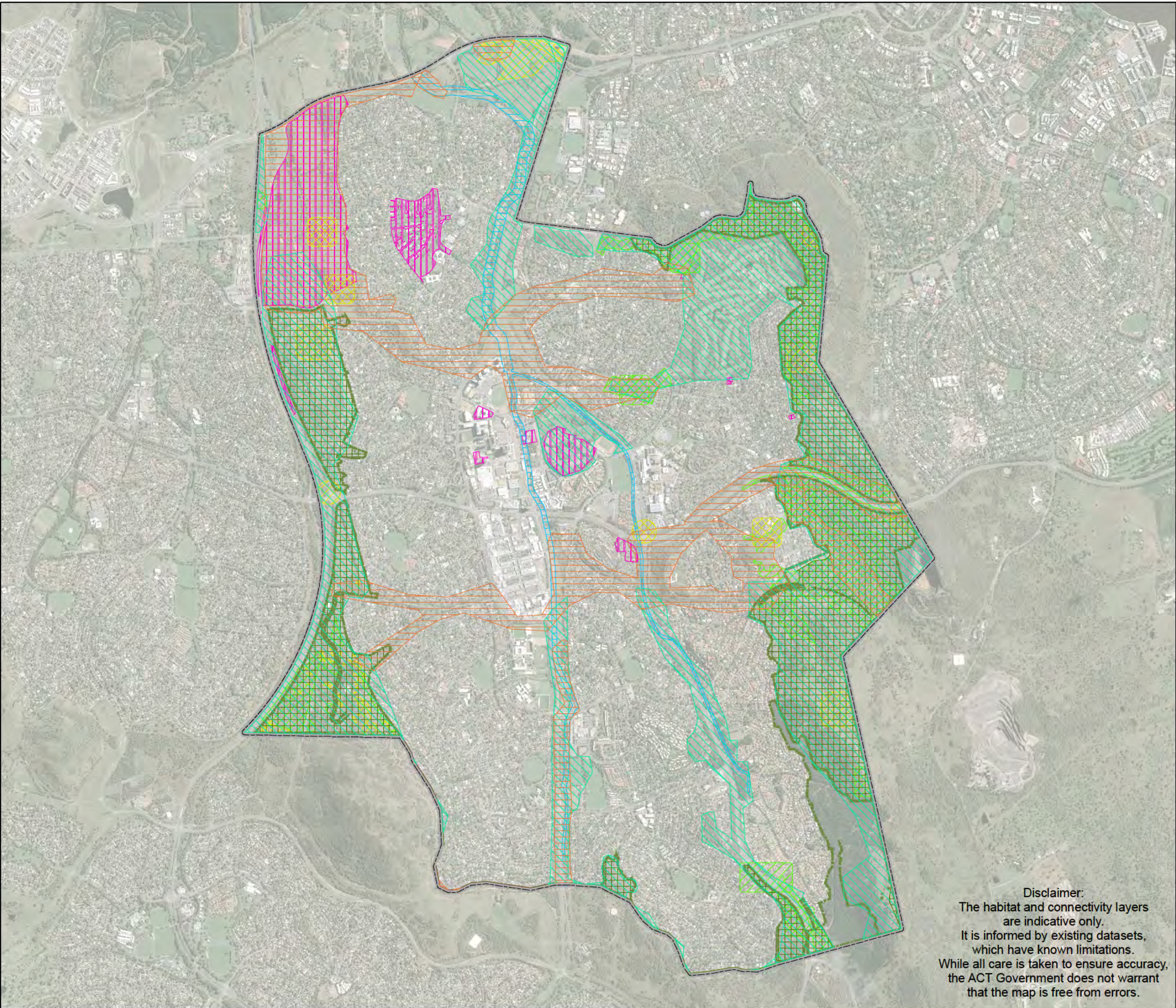
Priority Connectivity Areas are derived from interpreting the taxa-specific habitat maps and identifying where there may be opportunities to connect habitat patches that are currently disconnected. Identified potential habitat areas will be disconnected if there are barriers that impede movement (such as large roads) or when the distance between required habitat patches is too large (such as large areas with insufficient tree cover for woodland species). Priority Connectivity Areas represent identified opportunities for consideration to restore ecological connectivity

throughout the urban environment. They consider the existing conservation reserve network along with the mapped habitat to suggest corridors that could be established, existing areas to enhance, roads that could have wildlife over- or under-passes installed, and other restoration opportunities that would significantly improve connectivity.

Conservation Areas depict current reserves and offsets sites on public land. This layer is provided for context, for example to help visualise connections to reserves outside the urban boundaries. Conservation Areas are protected landscapes, however are not all inclusive. Potential Habitat Areas often extend beyond conservation areas, and provide further context to priority connections.

For consideration - below are a list of potential “initiatives” that could be highlighted in the Weston Creek District. These are not a complete or detailed list of what could be highlighted. Simply included to help guide your own development of these.

- Protect, enhance and restore ecological values to the areas around the mouth of Yarralumla Creek, Yarralumla Woolshed, and the Equestrian Park.
- Protect, enhance, and restore priority areas of woodland and grassland between Cotter Road / John Gorton Drive and Warrabamba Avenue / Dixon Drive to re-establish connectivity between Weston Creek, Molonglo River, and Narrabundah Hill.
- Protect and restore Holder Wetlands.



## EHW Conservation, Protected & Connectivity: Woden District



- Woden District
- CATEGORY**
- Conservation Area
- Potential Habitat Area
- Potential Priority Connectivity Areas
- Reserve
- Riparian
- Threatened Fauna
- Threatened Flora
- Heritage

0.8  
Kilometers

SPOT 6 Satellite Image - March 2022

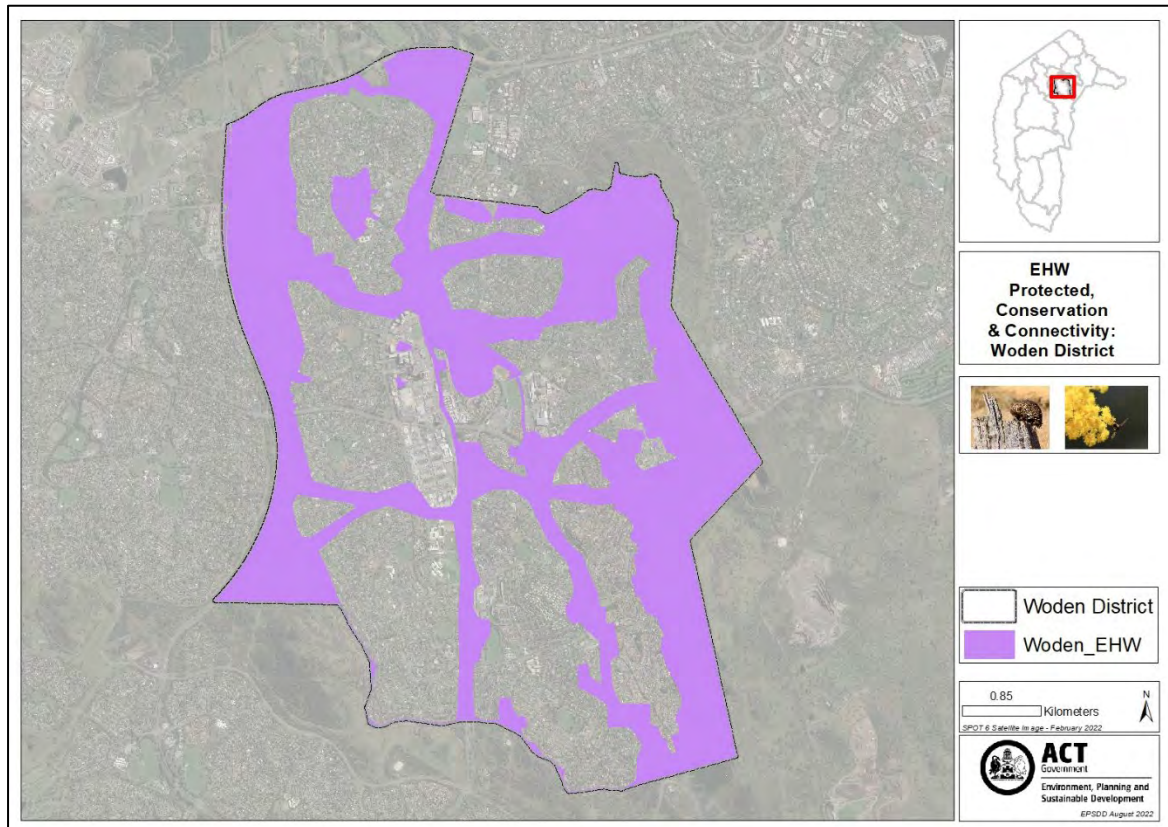


**Disclaimer:**  
The habitat and connectivity layers  
are indicative only.  
It is informed by existing datasets,  
which have known limitations.  
While all care is taken to ensure accuracy,  
the ACT Government does not warrant  
that the map is free from errors.

## Environment, Heritage and Water Conservation and Connectivity Layer – Woden District

This dataset amalgamates the following spatial datasets:

- Threatened and protected species and ecological communities within the Woden district
- Nature reserves within the Woden district
- Registered and recorded heritage places within the Woden district
- Riparian management corridors within the Woden district
- Potential priority habitat connectivity for the Woden district
- Potential habitat conservation areas in the Woden district



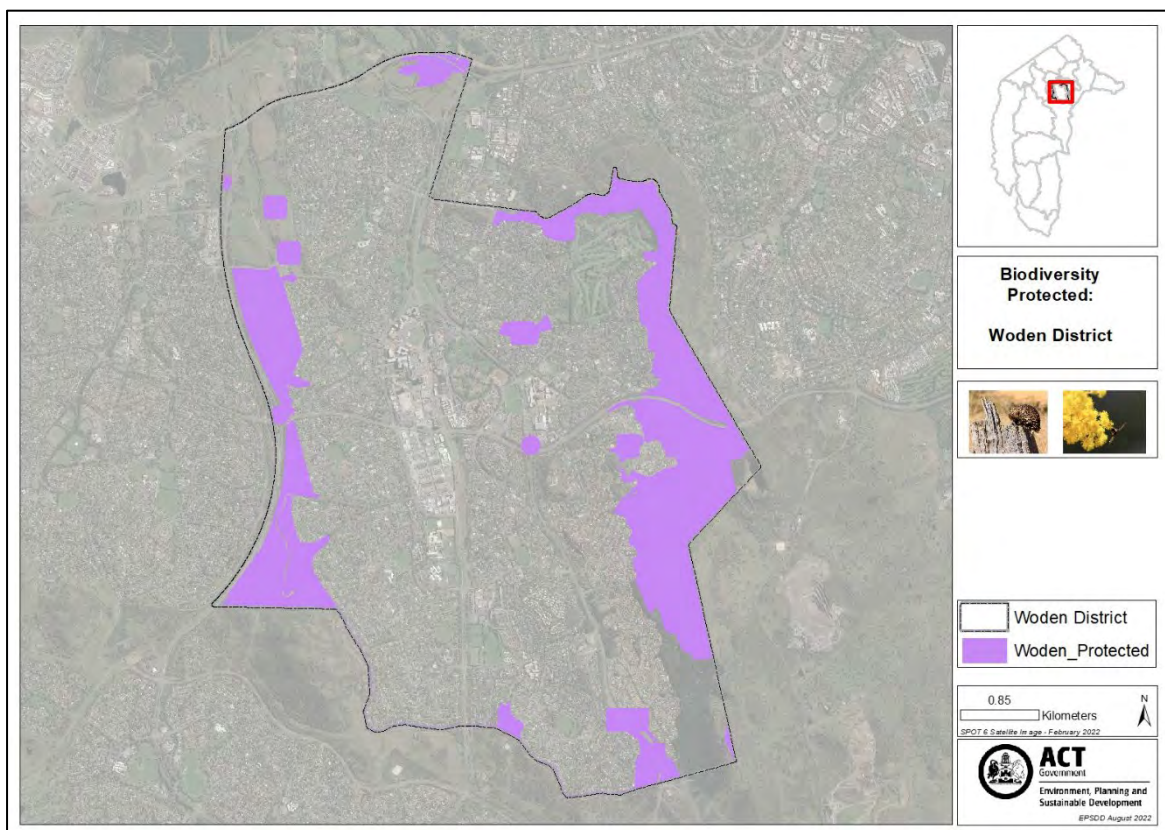
The shapefile “Woden\_EHW\_Protected\_Connect.shp” contents can be filtered by “CATEGORY”:

- Nature Reserves
- Protected Flora
- Protected Fauna
- Heritage
- Riparian Corridor
- Conservation Area
- Potential Habitat Area
- Potential Priority Connectivity Area

## Threatened & protected ecology

The “Nature Reserve”, “Threatened Flora” and “Threatened Fauna” categories indicate all species, habitat, ecological communities and nature reserves protected under the Nature Conservation Act and/or the EPBC Act, within the Woden district. Development within these zones have statutory restrictions, and consultation with the EPSDD Conservator of Flora and Fauna is required.

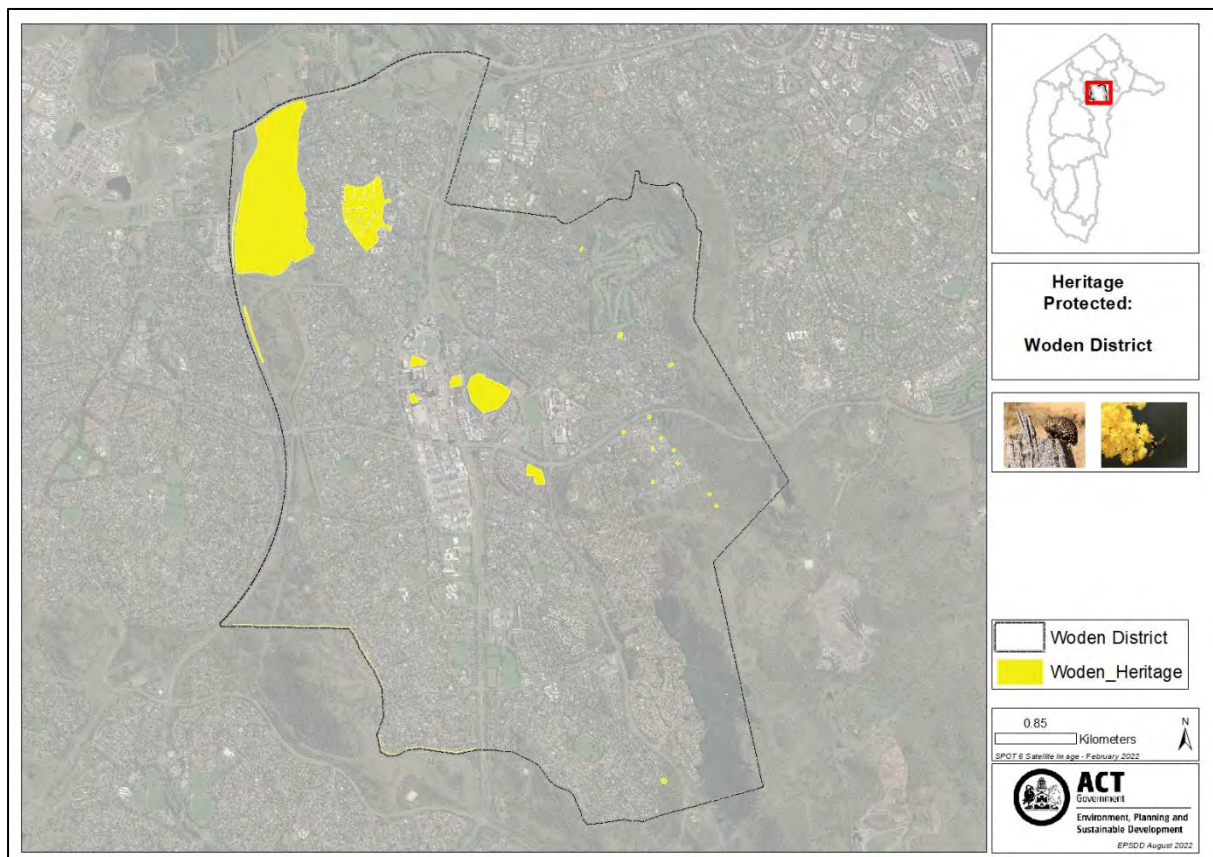
This layer combines verified threatened and protected fauna and flora species habitat and point data obtained from the ACT Wildlife Atlas and Canberra Nature Map, and the ACT Vegetation Map 2018. It does not contain unverified or modelled habitat. An obscuring algorithm was used on threatened wildlife point data, and a spatial buffer of 100m drawn around it to confuse potential sensitive data points and indicate the reach of habitat.



## Heritage Protected Areas

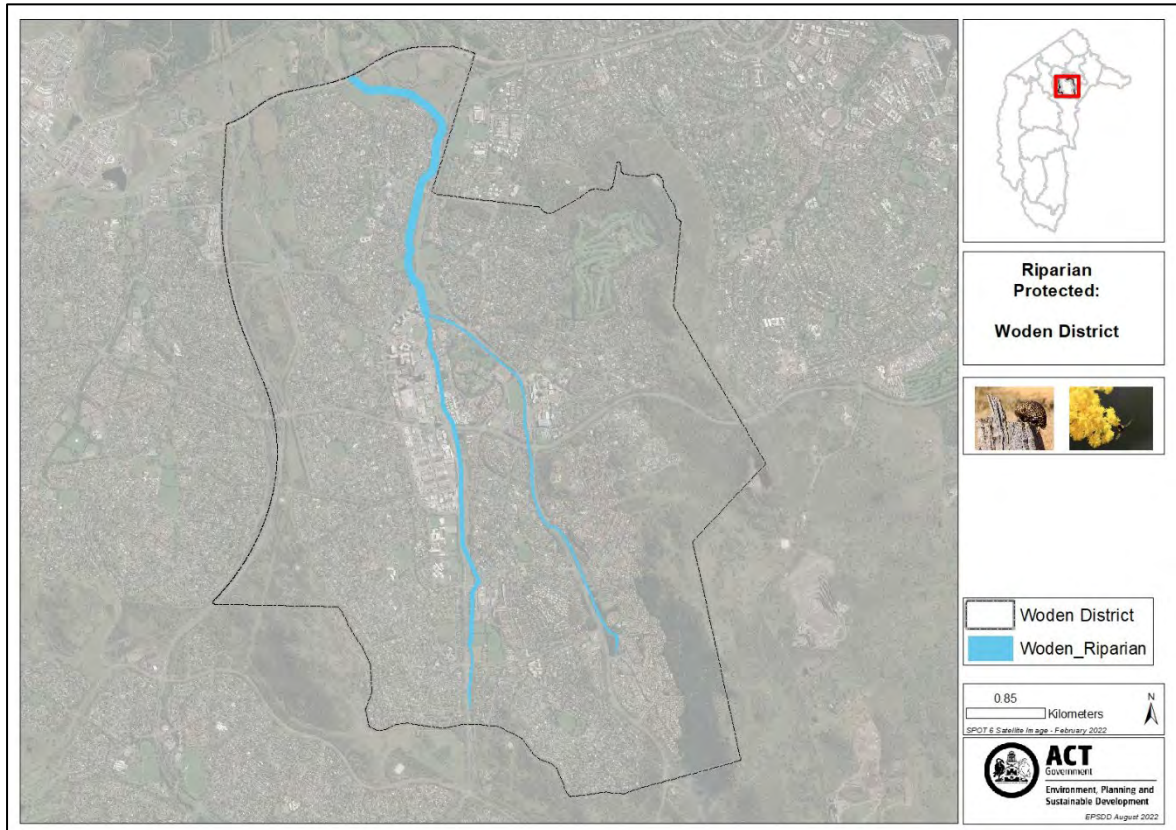
The “Heritage” category identifies registered and recorded heritage places within the Woden district, however, it does not differentiate heritage sites by their relative significance and conservation value. In many instances, the presence of heritage sites does not preclude future development, yet it does require careful planning of new development, as well as heritage assessment and management actions. However, there are also places registered on the ACT Heritage Register of high heritage significance, and Aboriginal places of high cultural significance, conservation of which is required under the Heritage Act.

For example, the University of Canberra campus is identified as containing heritage places, which consist of the registered ‘Student Group 2’ and 10 recorded Aboriginal places. Of these, 2 sites are of high significance, being the heritage buildings and an Aboriginal [REDACTED], and their conservation is required under the Heritage Act. Other sites are also of heritage value and opportunities to conserve sites in open space should be considered as part of future development. Where this is not reasonable practicable, and demonstrated to the satisfaction of the ACT Heritage Council, impact mitigation actions would be required prior to future development.



## Riparian Management Corridor

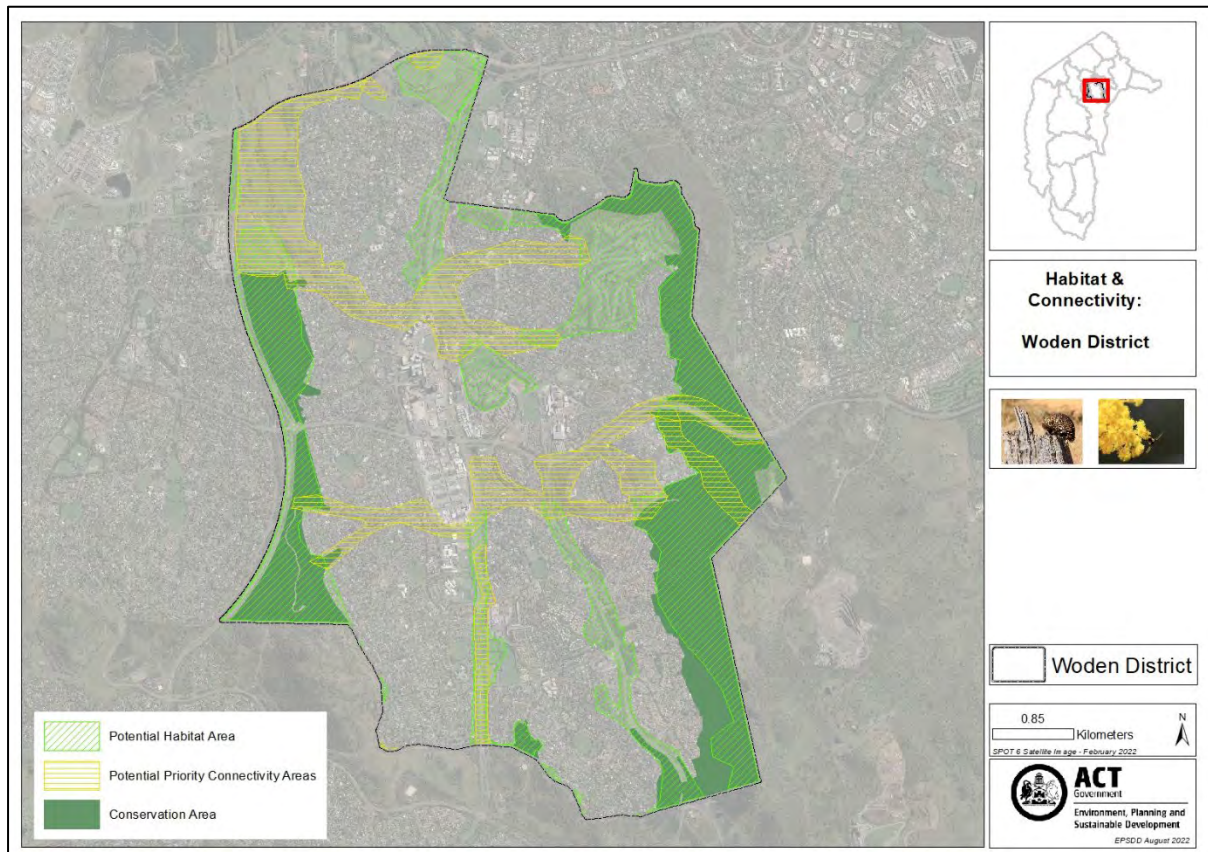
The “Riparian” category identifies riparian corridors in the Woden district. The areas of the map identified for Riparian Corridors are based off the wider of either the 1% AEP flood extent (Annual Exceedance Probability of flood) or the values determined based on the NSWG/Strahler method using stream order. Ovals, Paths and Service Zones can be considered compatible developments within riparian zones as long as consultation is undertaken as part of the planning process.



## Potential Habitat Conservation and Connectivity Areas

The following categories in the shapefile identify potential habitat conservation areas and priority conservation and restoration sites in the Woden:

- Conservation Area
- Potential Habitat Area
- Potential Priority Connectivity Area



This contains generalised outputs from a series of taxa-specific habitat models. These models combine expert-derived estimates of structural habitat requirements, minimum patch sizes, barriers to movement, and the movement capacity of seven wildlife groups with remote-sensing data of those habitat properties (e.g. LiDar vegetation) to map potential habitat and patch connectivity. Potential Habitat Areas provide a generalised spatial layer of potential suitable habitat. It is derived from the combination of habitat modelling for wildlife that are associated with grassland habitat (grassland reptiles), woodland habitat (small- and medium-sized mammals), and/or riparian and aquatic habitat (e.g. frogs, platypus, turtles, and fish). This is potential habitat in the broadest sense as coarse habitat properties (such as the presence of trees) could be modelled with existing data, but equivalent data for fine-scale habitat properties that are important (such as the presence of coarse-woody-debris) do not exist and therefore could not be considered in the current models.

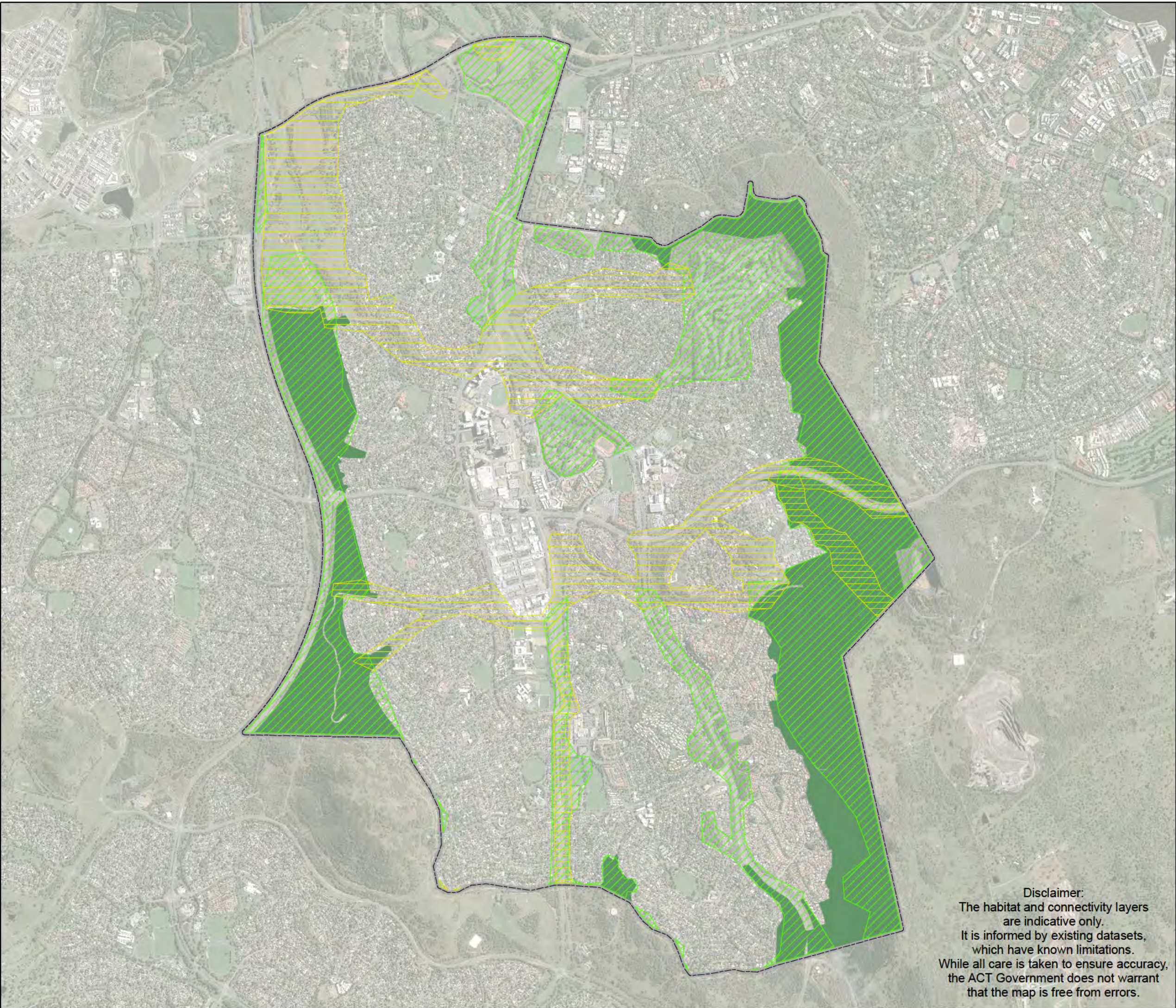
Priority Connectivity Areas are derived from interpreting the taxa-specific habitat maps and identifying where there may be opportunities to connect habitat patches that are currently disconnected. Identified potential habitat areas will be disconnected if there are barriers that impede movement (such as large roads) or when the distance between required habitat patches is too large (such as large areas with insufficient tree cover for woodland species). Priority Connectivity Areas represent identified opportunities for consideration to restore ecological connectivity

throughout the urban environment. They consider the existing conservation reserve network along with the mapped habitat to suggest corridors that could be established, existing areas to enhance, roads that could have wildlife over- or under-passes installed, and other restoration opportunities that would significantly improve connectivity.

Conservation Areas depict current reserves and offsets sites on public land. This layer is provided for context, for example to help visualise connections to reserves outside the urban boundaries. Conservation Areas are protected landscapes, however are not all inclusive. Potential Habitat Areas often extend beyond conservation areas, and provide further context to priority connections.



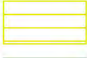

For consideration - below are a list of potential “initiatives” that could be highlighted in the Woden District. These are not a complete or detailed list of what could be highlighted. Simply included to help guide your own development of these.

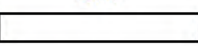

- Enhance, restore and connect priority areas of grassland and woodland, particularly in the north throughout Curtin Park and open spaces of Hughes, and through central Woden to connect reserves in the east and west of the district.
- Protect and restore areas of Yarralumla Creek as riparian corridors, particular at the head of the creek to restore connectivity with Farrer Ridge.



**EHW  
Potential Habitat  
& Connectivity:  
Woden District**



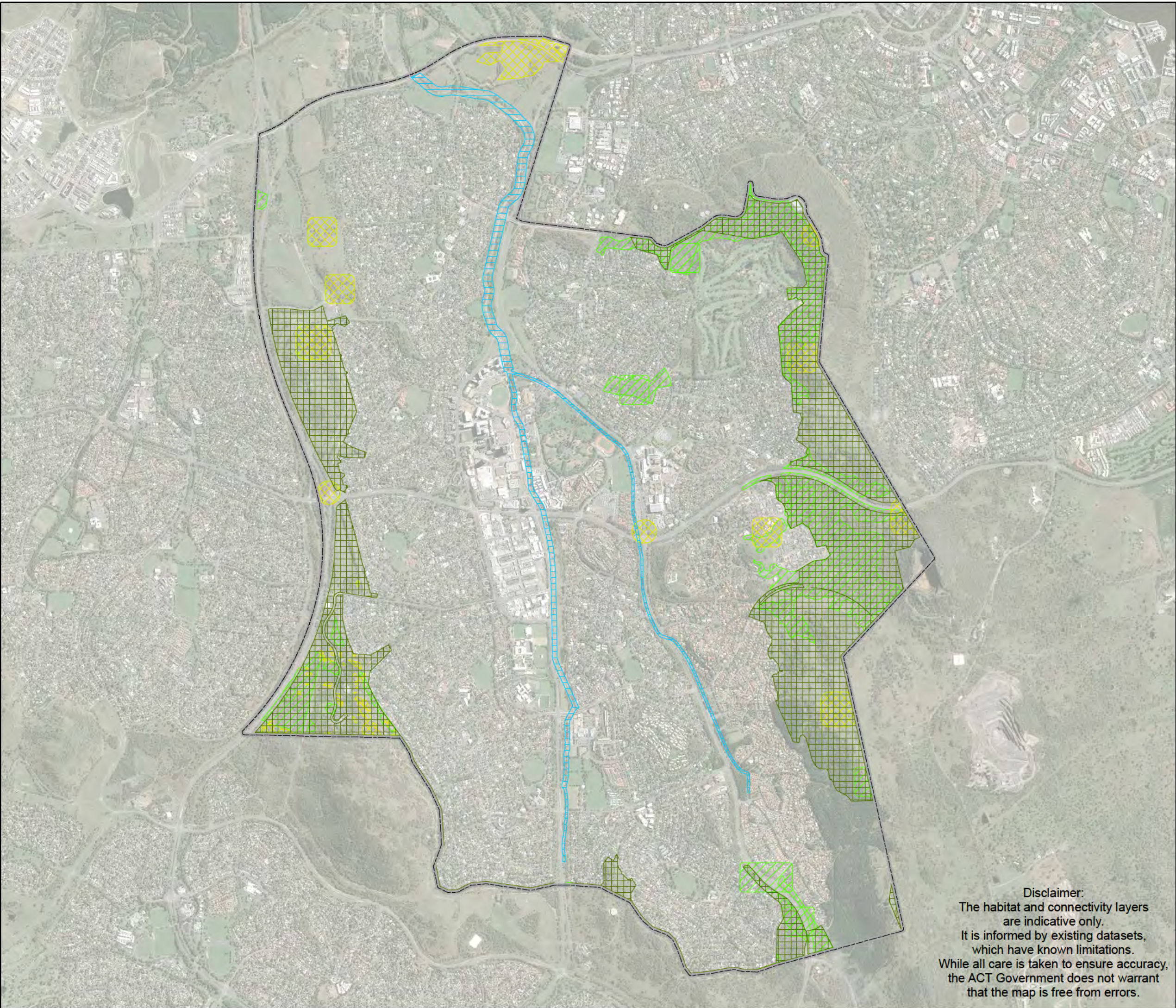
 Woden District  
**CATEGORY**  
 Potential Habitat Area  
 Potential Priority Connectivity Areas  
 Conservation Area

0.8  
 Kilometers
 

*SPOT 6 Satellite Image - March 2022*


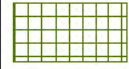
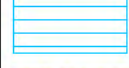


**Disclaimer:**  
 The habitat and connectivity layers are indicative only. It is informed by existing datasets, which have known limitations. While all care is taken to ensure accuracy, the ACT Government does not warrant that the map is free from errors.


**ACT**  
 Government  
 Environment, Planning and Sustainable Development  
*EPSDD August 2022*



**EHW  
Protected  
Biodiversity:  
Woden District**



 Woden District  
**CATEGORY**  
 Reserve  
 Riparian  
 Threatened Fauna  
 Threatened Flora

0.85  
 Kilometers  
 SPOT 6 Satellite Image - March 2022



Disclaimer:  
 The habitat and connectivity layers  
 are indicative only.  
 It is informed by existing datasets,  
 which have known limitations.  
 While all care is taken to ensure accuracy,  
 the ACT Government does not warrant  
 that the map is free from errors.


**ACT**  
 Government  
 Environment, Planning and  
 Sustainable Development  
 EPSDD August 2022