



no_ATT21_Photo 2



no_ATT32_Photo 1



no_ATT38_Photo 4

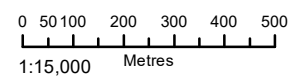


no_ATT43_Photo 1



FIG NO. 1 **FIGURE TITLE** East West Link Corridor Location

DATE
13/03/2020



PAGE SIZE
A3

COORDINATE SYSTEM
GDA 1994 MGA Zone 55

PROJECT NO. 3002754
CLIENT: ACT Government

PROJECT TITLE East West Arterial Feasibility Study, Assessment of Geotechnical Constraints

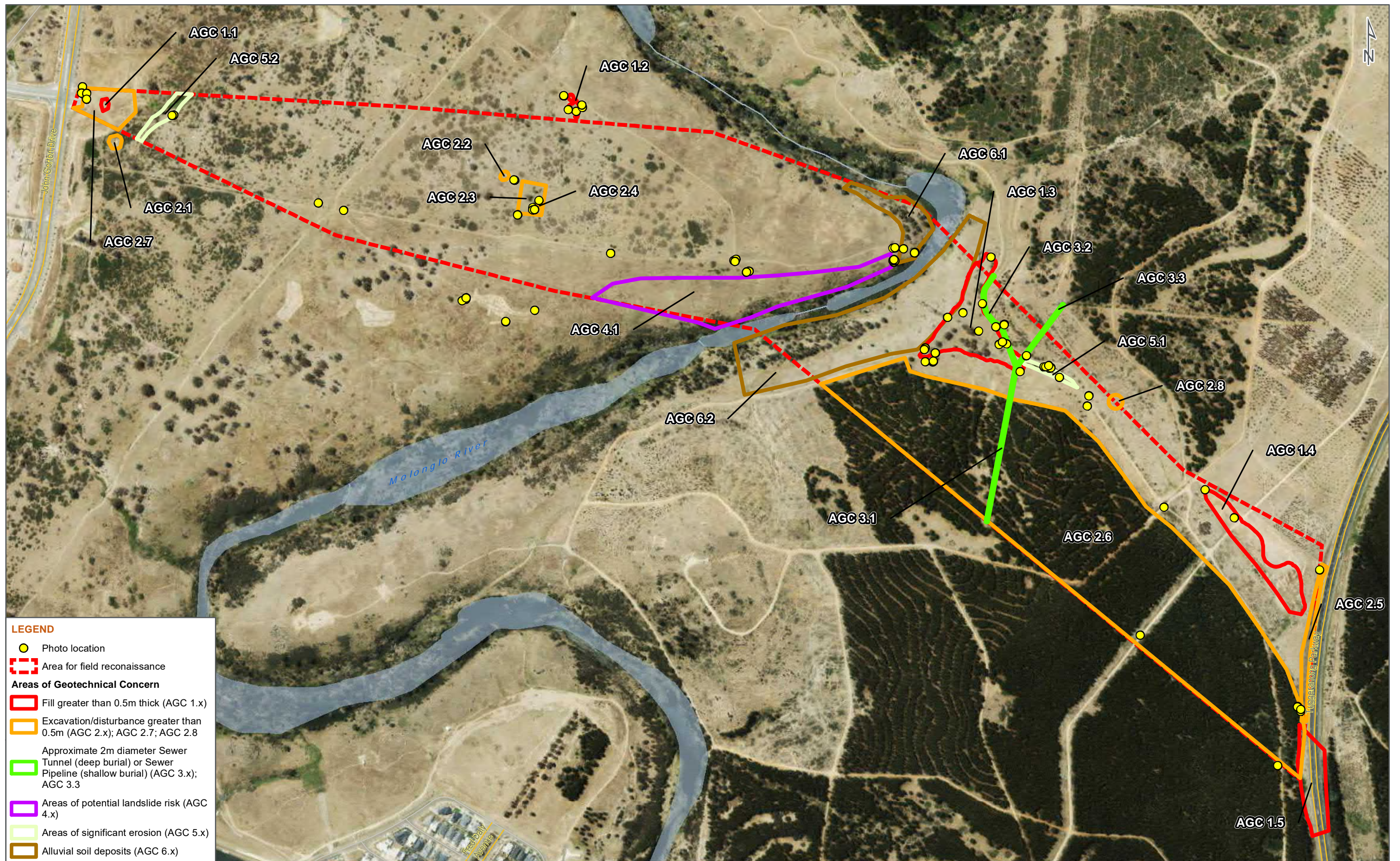
CREATED BY CS14989
REVIEWED BY SRM

SOURCES Roadnet MDS 2019, Metromap 2019

© SMEC Australia Pty Ltd 2020.
All Rights Reserved

Disclaimer: While all reasonable care has been taken to ensure the information contained on this map is up to date and accurate, this map contains data from a number of sources - no warranty is given that the information contained on this map is free from error or omission. Any reliance placed on such information shall be at the sole risk of the user. Please verify the accuracy of all information prior to using it. This map is not a design document.



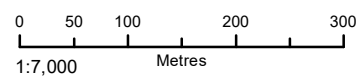


LEGEND

- Photo location
- Area for field reconnaissance
- Areas of Geotechnical Concern**
- Fill greater than 0.5m thick (AGC 1.x)
- Excavation/disturbance greater than 0.5m (AGC 2.x); AGC 2.7; AGC 2.8
- Approximate 2m diameter Sewer Tunnel (deep burial) or Pipeline (shallow burial) (AGC 3.x); AGC 3.3
- Areas of potential landslide risk (AGC 4.x)
- Areas of significant erosion (AGC 5.x)
- Alluvial soil deposits (AGC 6.x)

FIG NO. 2 **FIGURE TITLE** Areas of Geotechnical Concern (AGC)

DATE
24/03/2020



PAGE SIZE
A3

COORDINATE SYSTEM
GDA 1994 MGA Zone 55

© SMEC Australia Pty Ltd 2020.
All Rights Reserved

Disclaimer: While all reasonable care has been taken to ensure the information contained on this map is up to date and accurate, this map contains data from a number of sources - no warranty is given that the information contained on this map is free from error or omission. Any reliance placed on such information shall be at the sole risk of the user. Please verify the accuracy of all information prior to using it. This map is not a design document.

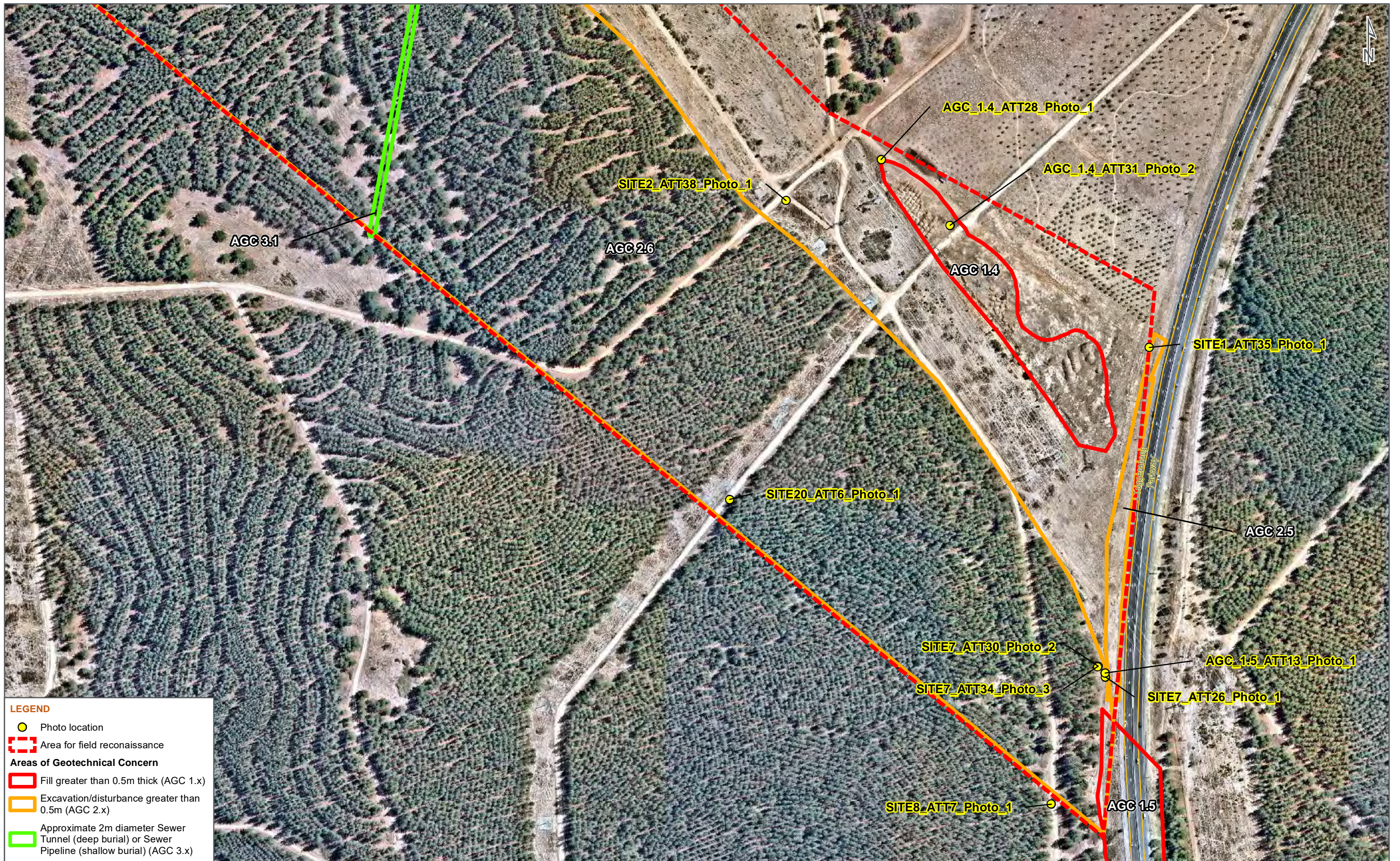


PROJECT NO. 3002754
CLIENT: ACT Government

PROJECT TITLE East West Arterial Feasibility Study, Assessment of Geotechnical Constraints

CREATED BY CS14989
REVIEWED BY SRM

SOURCES Roadnet MDS 2019, Metromap 2019



LEGEND

- Photo location
- Area for field reconnaissance
- Areas of Geotechnical Concern**
- Fill greater than 0.5m thick (AGC 1.x)
- Excavation/disturbance greater than 0.5m (AGC 2.x)
- Approximate 2m diameter Sewer Tunnel (deep burial) or Sewer Pipeline (shallow burial) (AGC 3.x)

<p>FIG NO. 3A FIGURE TITLE Site Detail - Eastern Portion of Site</p>	<p>DATE 22/03/2020</p>	<p>0 50 100 1:3,000 Metres</p>	<p>PAGE SIZE A3</p>	<p>COORDINATE SYSTEM GDA 1994 MGA Zone 55</p>	<p>© SMEC Australia Pty Ltd 2020. All Rights Reserved</p> <p><small>Disclaimer: While all reasonable care has been taken to ensure the information contained on this map is up to date and accurate, this map contains data from a number of sources - no warranty is given that the information contained on this map is free from error or omission. Any reliance placed on such information shall be at the sole risk of the user. Please verify the accuracy of all information prior to using it. This map is not a design document.</small></p>
<p>PROJECT NO. 3002754 CLIENT: ACT Government</p>	<p>PROJECT TITLE East West Arterial Feasibility Study, Assessment of Geotechnical Constraints</p>	<p>CREATED BY CS14989 REVIEWED BY SRM</p>	<p>SOURCES Roadnet MDS 2019, Nearmap 2020</p>		

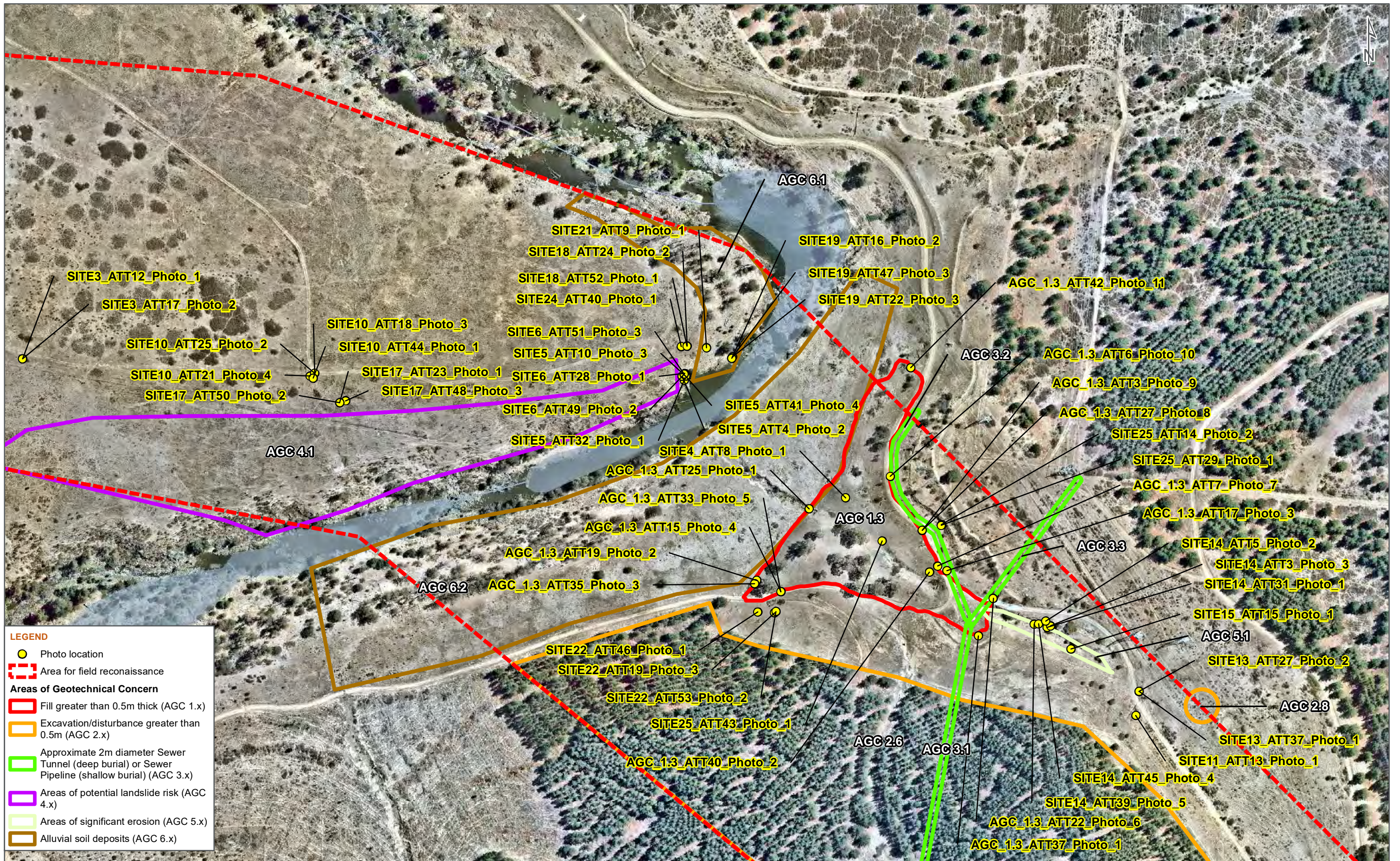
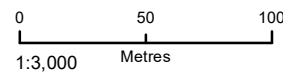


FIG NO. 3B FIGURE TITLE Site Detail - Central Portion of Site

DATE
24/03/2020



PAGE SIZE
A3

COORDINATE SYSTEM
GDA 1994 MGA Zone 55

© SMEC Australia Pty Ltd 2020.
All Rights Reserved

Disclaimer: While all reasonable care has been taken to ensure the information contained on this map is up to date and accurate, this map contains data from a number of sources - no warranty is given that the information contained on this map is free from error or omission. Any reliance placed on such information shall be at the sole risk of the user. Please verify the accuracy of all information prior to using it. This map is not a design document.



PROJECT NO. 3002754
CLIENT: ACT Government

PROJECT TITLE East West Arterial Feasibility Study, Assessment of Geotechnical Constraints

CREATED BY CS14989
REVIEWED BY SRM

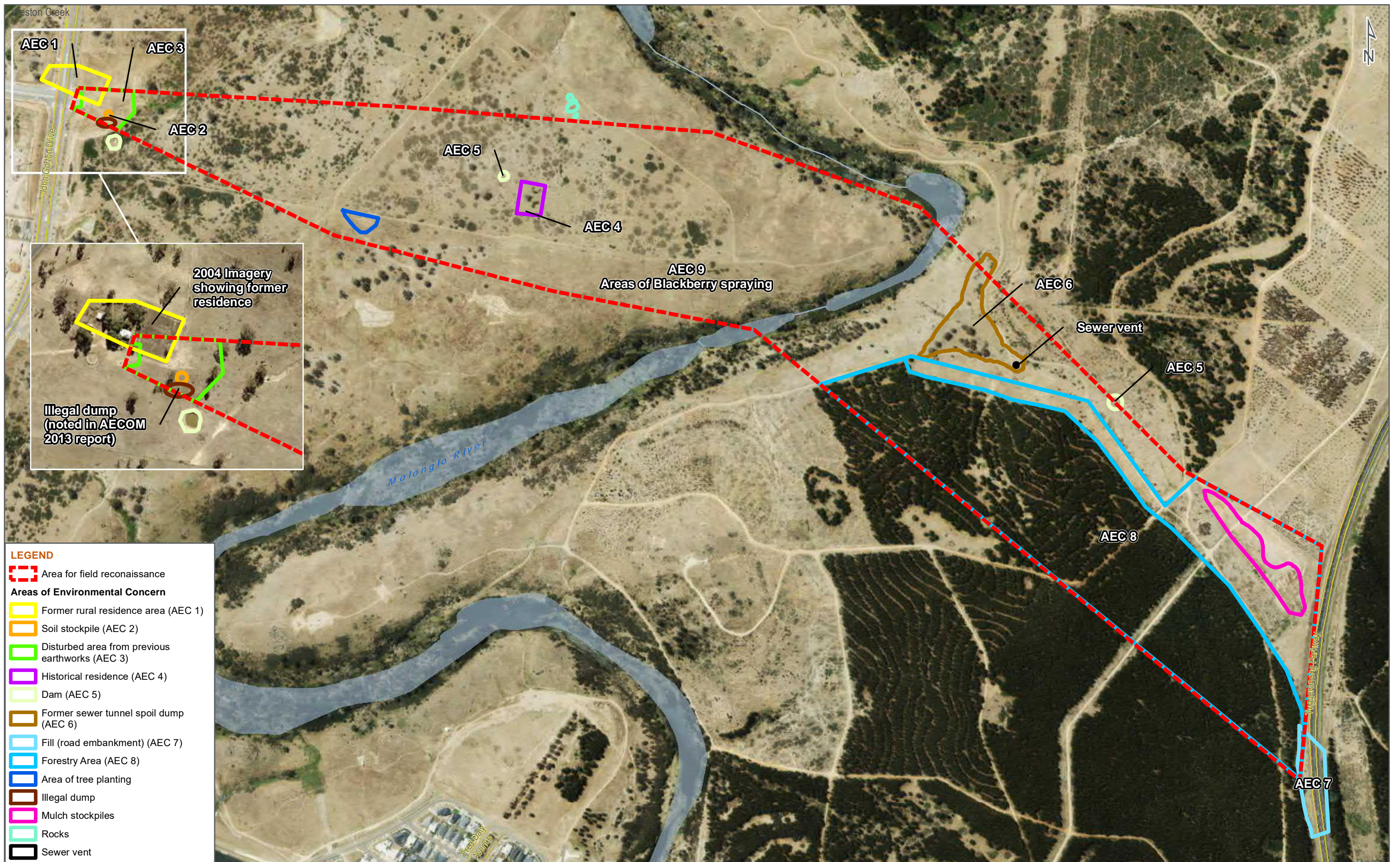
SOURCES Roadnet MDS 2019, Nearmap 2020



LEGEND

- Photo location
- Area for field reconnaissance
- Areas of Geotechnical Concern**
- Fill greater than 0.5m thick (AGC 1.x)
- Excavation/disturbance greater than 0.5m (AGC 2.x); AGC 2.7; AGC 2.8
- Areas of potential landslide risk (AGC 4.x)
- Areas of significant erosion (AGC 5.x)

<p>FIG NO. 3C FIGURE TITLE Site Detail - West Portion of Site</p>	<p>DATE 24/03/2020</p>	<p>0 50 100 1:3,000 Metres</p>	<p>PAGE SIZE A3</p>	<p>COORDINATE SYSTEM GDA 1994 MGA Zone 55</p>	<p>© SMEC Australia Pty Ltd 2020. All Rights Reserved</p> <p><small>Disclaimer: While all reasonable care has been taken to ensure the information contained on this map is up to date and accurate, this map contains data from a number of sources - no warranty is given that the information contained on this map is free from error or omission. Any reliance placed on such information shall be at the sole risk of the user. Please verify the accuracy of all information prior to using it. This map is not a design document.</small></p>
<p>PROJECT NO. 3002754 CLIENT: ACT Government</p>	<p>PROJECT TITLE East West Arterial Feasibility Study, Assessment of Geotechnical Constraints</p>	<p>CREATED BY CS14989 REVIEWED BY SRM</p>	<p>SOURCES Roadnet MDS 2019, Nearmap 2020</p>		



LEGEND

- Area for field reconnaissance
- Areas of Environmental Concern**
- Former rural residence area (AEC 1)
- Soil stockpile (AEC 2)
- Disturbed area from previous earthworks (AEC 3)
- Historical residence (AEC 4)
- Dam (AEC 5)
- Former sewer tunnel spoil dump (AEC 6)
- Fill (road embankment) (AEC 7)
- Forestry Area (AEC 8)
- Area of tree planting
- Illegal dump
- Mulch stockpiles
- Rocks
- Sewer vent

FIG NO. 4 **FIGURE TITLE** Site Features and Potential Areas of Environmental Concern

PROJECT NO. 3002754 **PROJECT TITLE** East West Arterial Feasibility Study, Assessment of Geotechnical Constraints

CLIENT: ACT Government

DATE 20/03/2020

SCALE 1:7,000

PAGE SIZE A3 **COORDINATE SYSTEM** GDA 1994 MGA Zone 55

CREATED BY CS14989 **SOURCES** Roadnet MDS 2019, Metromap 2019

REVIEWED BY SRM

© SMEC Australia Pty Ltd 2020. All Rights Reserved.

Disclaimer: While all reasonable care has been taken to ensure the information contained on this map is up to date and accurate, this map contains data from a number of sources - no warranty is given that the information contained on this map is free from error or omission. Any reliance placed on such information shall be at the sole risk of the user. Please verify the accuracy of all information prior to using it. This map is not a design document.



Appendix D Stakeholder Engagement – Preliminary Options Preparation Session