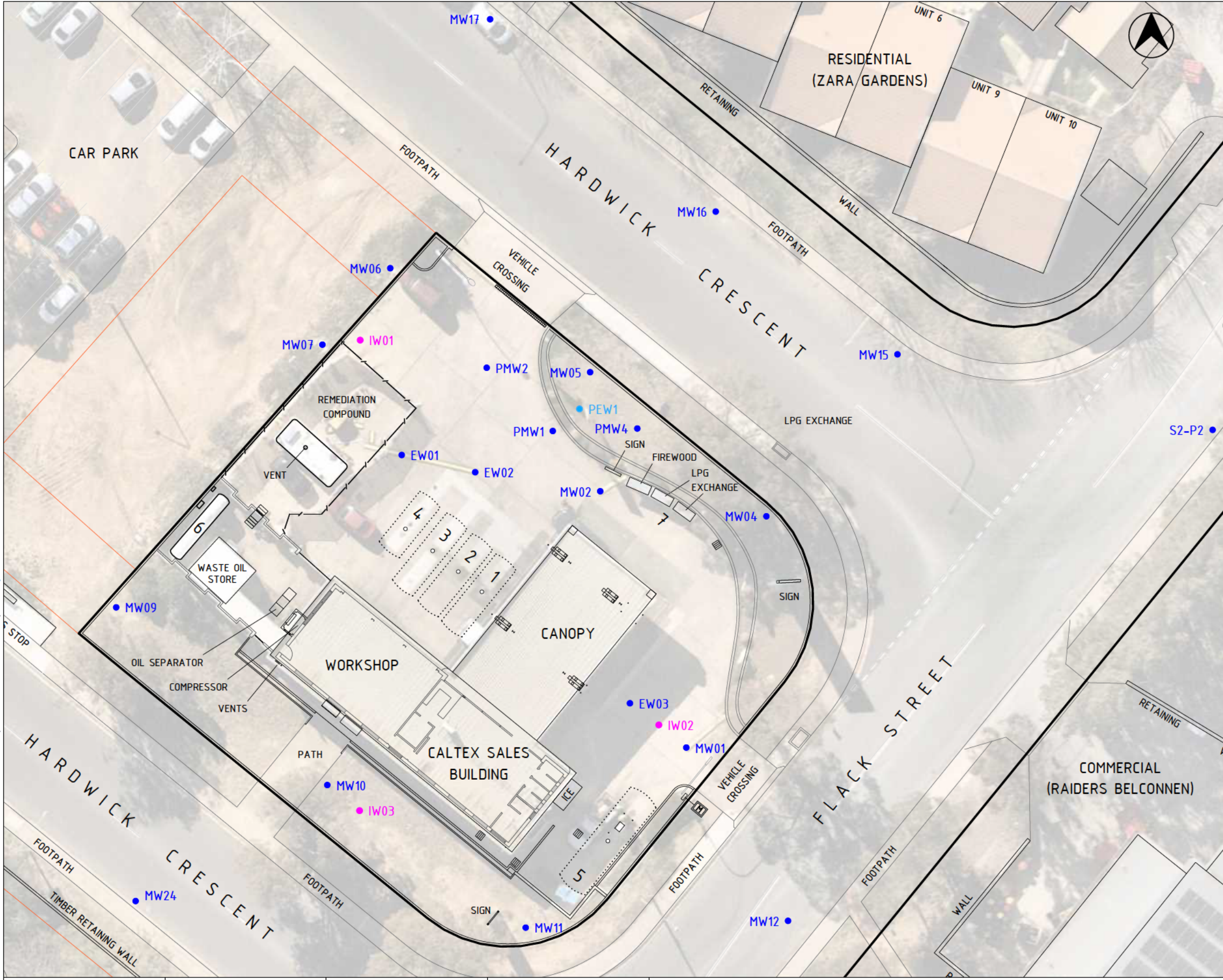


aerial image nearmap august 2020
 block & section data from http://www.actmap.act.gov.au
 Tue, 13 Oct 2020 7:54:23 AM | drawn by laurie white at www.rumad.com.au
 D:\Google Drive\InSite Remediation\Holt\FIGURES\SVR 2020 SEPT\3\CALTEX HOLT SVR F02a V3.vwx



LEGEND

- PROPERTY BOUNDARY
- BLOCK / SECTION BOUNDARY
- MW## GROUNDWATER MONITORING WELL
- EW## GROUNDWATER MONITORING WELL
- PMW## GROUNDWATER MONITORING WELL
- S2-P# GROUNDWATER MONITORING WELL
- S2-C# GROUNDWATER MONITORING WELL
- PEW## EXTRACTION WELL
- IW## INJECTION WELL

TANK SCHEDULE

TANK	TYPE	PRODUCT	CLASS	CAPACITY	USAGE
1	UST	V95	3	27,400L	IN USE
2	UST	DIESEL	C1	27,400L	IN USE
3	UST	E10	3	27,400L	IN USE
4	UST	V98	3	20,000L	NOT IN USE
5	UST	ULP	3	59,400L	IN USE
6	AST	LPG	2.1	7,500L	NOT IN USE
7	LPG EXCHANGE		2.1	9x4kg, 42x9kg	IN USE

NOTE

LPG TANK (TANK 6) DECOMMISSIONED, NITROGEN PURGED.

0 10m

1:340 AT A3 APPROXIMATE

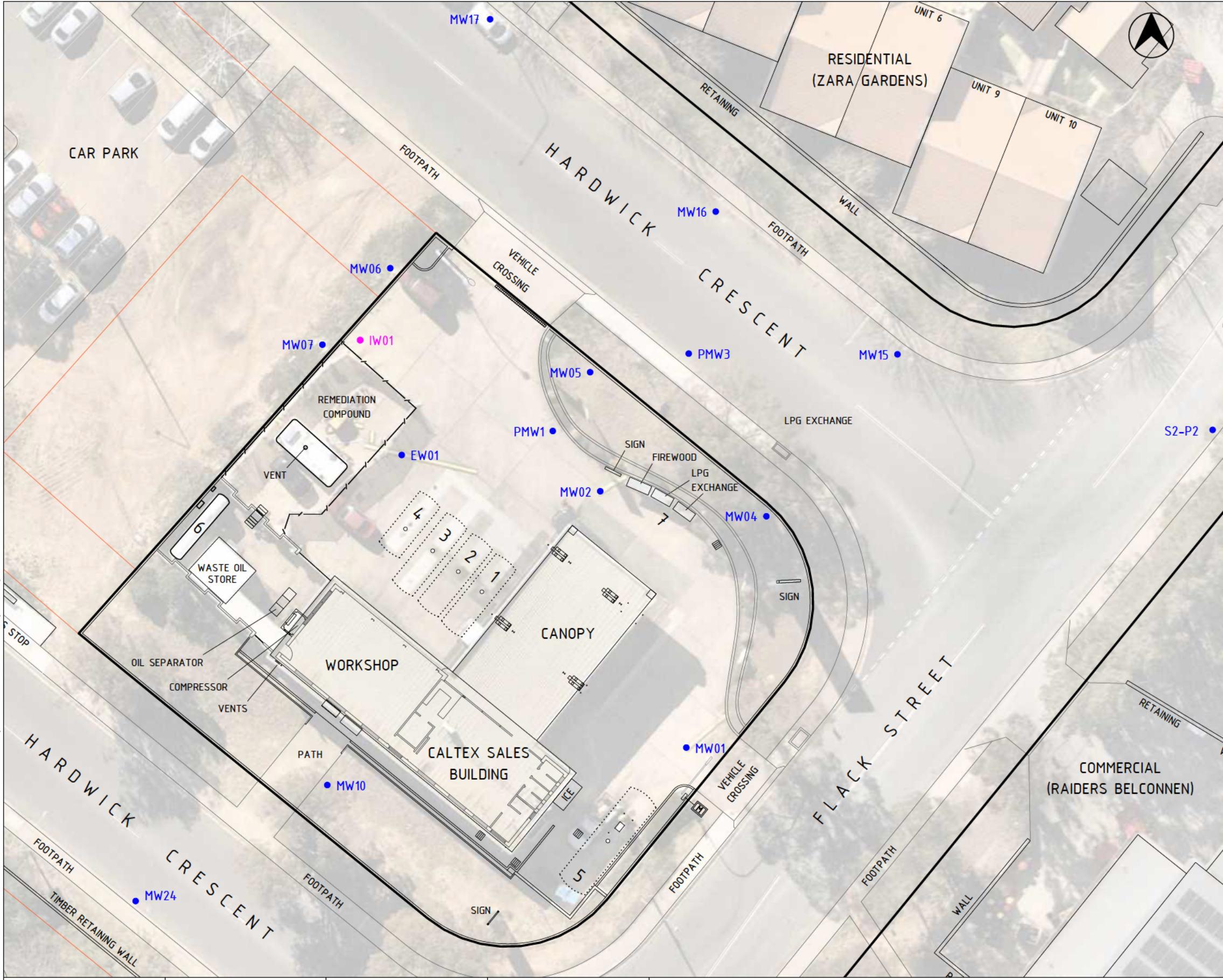
REFERENCE: CALTEX 'DANGEROUS GOODS PLAN' DRAWING NO. 22546-DG
 REV. B DATED 25/11/2011 AND VERIS SURVEY 217267.01 DATED 02/10/2020 SUPPLIED BY CLIENT.



CALTEX HOLT SERVICE STATION
 1 HARDWICK CRESCENT
 HOLT ACT

FIGURE 7a
 Monthly Gauging Locations

aerial image nearmap august 2020
 block & section data from http://www.actmap.act.gov.au
 Tue, 13 Oct 2020 7:54:23 AM | drawn by laurie white at www.rumad.com.au
 D:\Google Drive\InSite Remediation\Holt\FIGURES\FIGURES SVR 2020 SEPT\1\3\CALTEX HOLT SVR F02a V3.vwx



LEGEND

- PROPERTY BOUNDARY
- BLOCK / SECTION BOUNDARY
- MW## GROUNDWATER MONITORING WELL
- EW## GROUNDWATER MONITORING WELL
- PMW## GROUNDWATER MONITORING WELL
- S2-P# GROUNDWATER MONITORING WELL
- S2-C# GROUNDWATER MONITORING WELL
- IW## INJECTION WELL

TANK SCHEDULE

TANK	TYPE	PRODUCT	CLASS	CAPACITY	USAGE
1	UST	V95	3	27,400L	IN USE
2	UST	DIESEL	C1	27,400L	IN USE
3	UST	E10	3	27,400L	IN USE
4	UST	V98	3	20,000L	NOT IN USE
5	UST	ULP	3	59,400L	IN USE
6	AST	LPG	2.1	7,500L	NOT IN USE
7	LPG EXCHANGE		2.1	9x4kg, 42x9kg	IN USE

NOTE

LPG TANK (TANK 6) DECOMMISSIONED, NITROGEN PURGED.

0 10m

1:340 AT A3 APPROXIMATE

REFERENCE: CALTEX 'DANGEROUS GOODS PLAN' DRAWING NO. 22546-DG
 REV. B DATED 25/11/2011 AND VERIS SURVEY 217267.01 DATED 02/10/2020 SUPPLIED BY CLIENT.



technical services
geotechnical & environmental
drafting support



Figure prepared for WSP by
InSite Remediation Services Pty Ltd





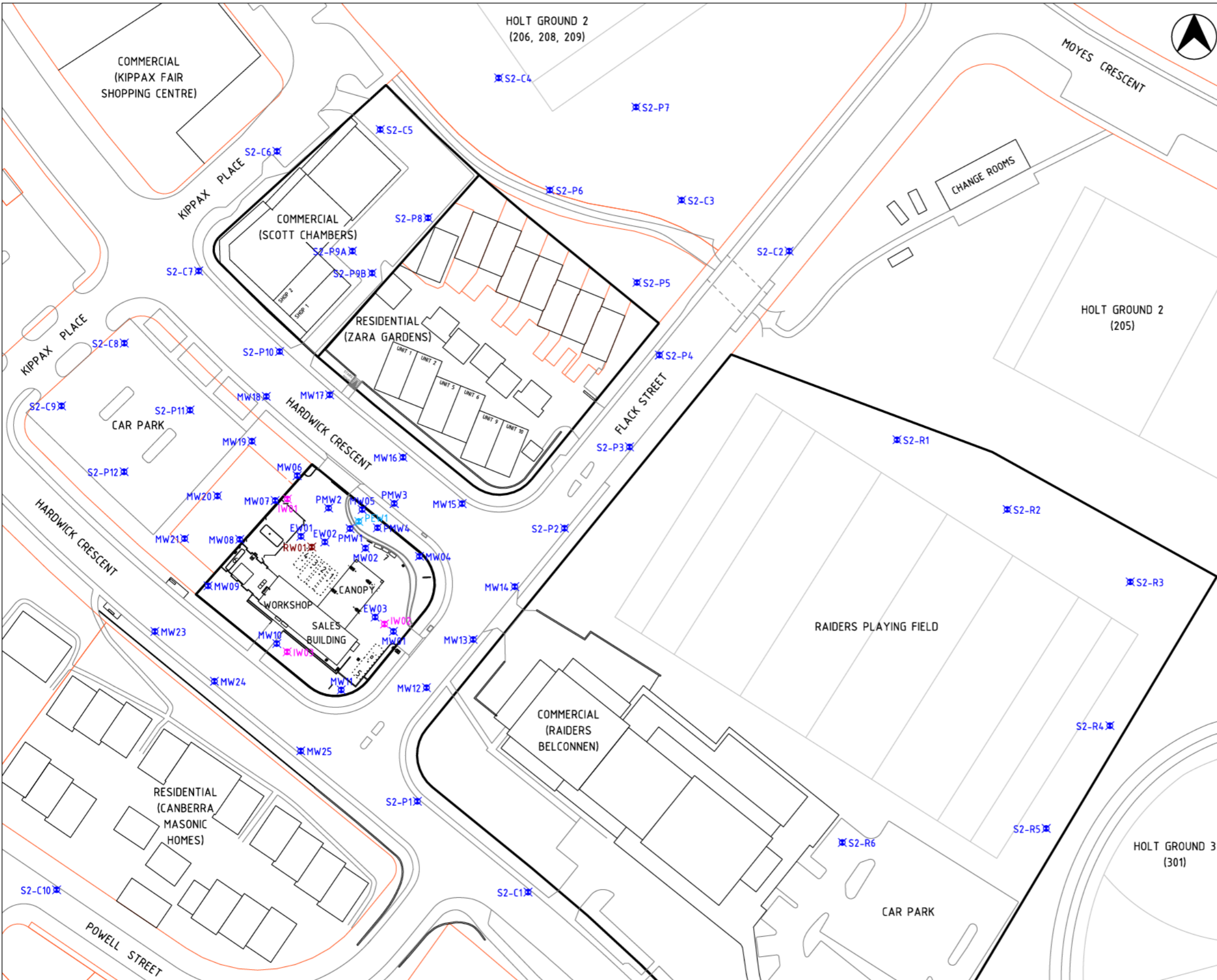
CALTEX HOLT SERVICE STATION

1 HARDWICK CRESCENT

HOLT ACT

FIGURE 7b

Quarterly Groundwater Sampling Locations



LEGEND

- PROPERTY BOUNDARY
- BLOCK / SECTION BOUNDARY
- GROUNDWATER MONITORING WELL
- EXTRACTION WELL
- INJECTION WELL
- RECOVERY WELL

0 25m
1:050 AT A3 APPROXIMATE

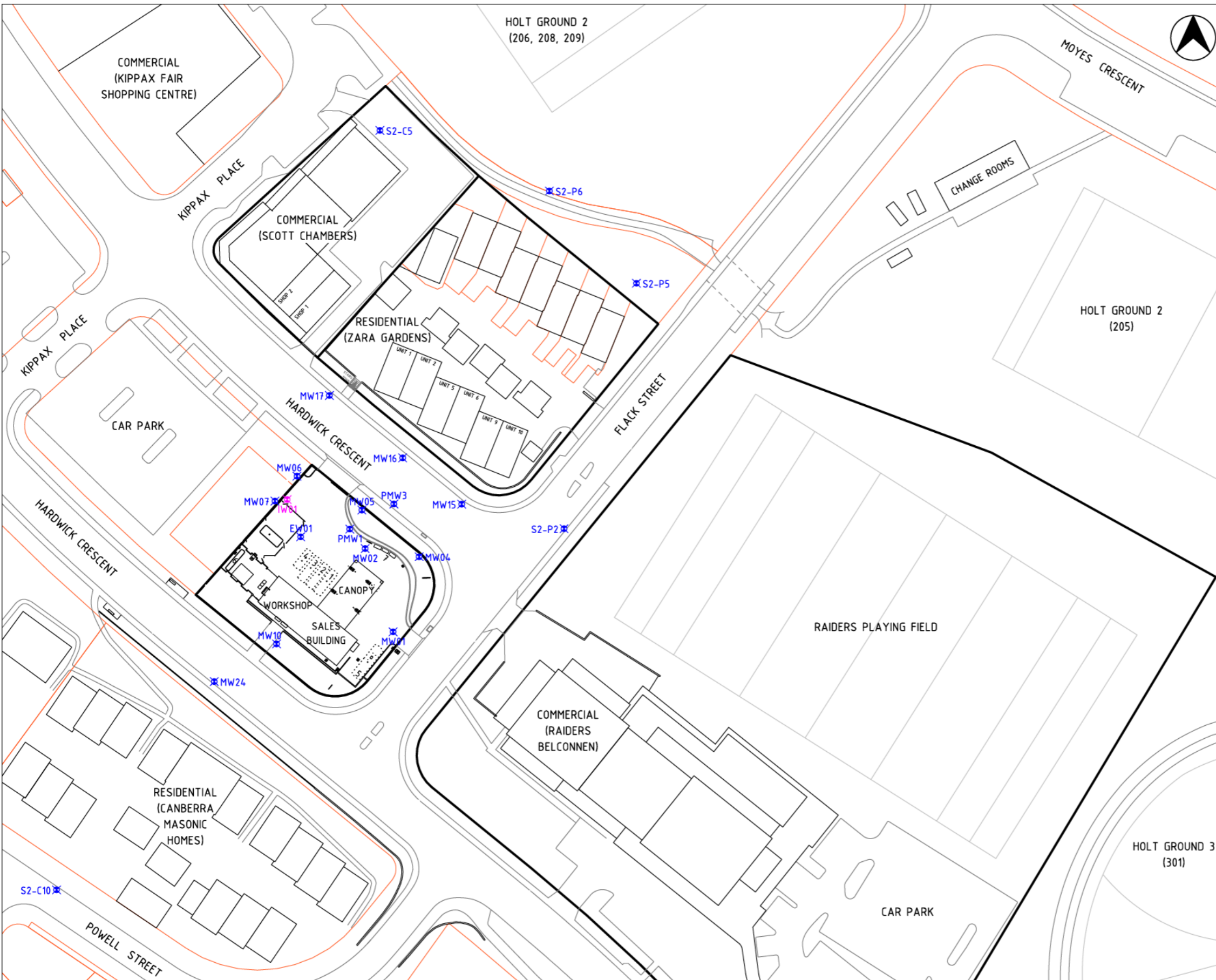
REFERENCE: CALTEX 'DANGEROUS GOODS PLAN' DRAWING NO. 22546-DG
REV. B DATED 25/11/2011 AND VERIS SURVEY 217267.001 DATED
20/11/2020 SUPPLIED BY CLIENT. COORD SYSTEM MGA 55 (2020).



CALTEX HOLT SERVICE STATION
1 HARDWICK CRESCENT
HOLT ACT

FIGURE 7c
Bi-Annual Groundwater Monitoring
Locations

D:\Google Drive\InSite Remediation\Holt\FIGURES\FIGURES STAGE 2 ESA\FIGURES\FIGURES STAGE 2 ESA_F04_V5.wkx | Thu, 19 Nov 2020 12:09:26 PM | drawn by laurie white at www.reumad.com.au
block & section data from http://www.actmap.act.gov.au



LEGEND

- PROPERTY BOUNDARY
- BLOCK / SECTION BOUNDARY
- GROUNDWATER MONITORING WELL
- INJECTION WELL

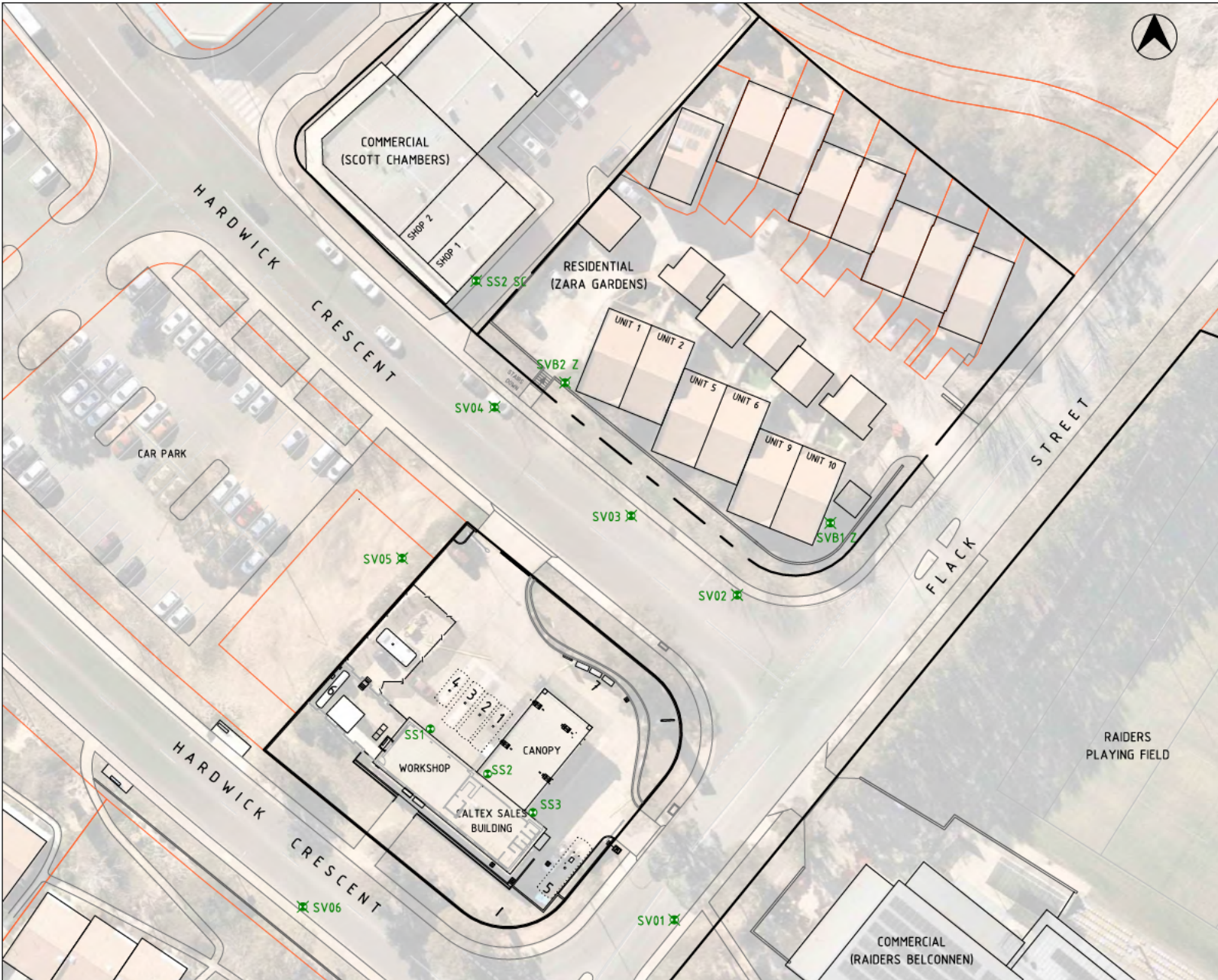
0 25m
1:050 AT A3 APPROXIMATE

REFERENCE: CALTEX 'DANGEROUS GOODS PLAN' DRAWING NO. 22546-DG
REV. B DATED 25/11/2011 AND VERIS SURVEY 217267.001 DATED
20/11/2020 SUPPLIED BY CLIENT. COORD SYSTEM MGA 55 (2020).



CALTEX HOLT SERVICE STATION
1 HARDWICK CRESCENT
HOLT ACT

FIGURE 7d
MNA Parameter Groundwater Monitoring Locations



LEGEND

- PROPERTY BOUNDARY
- BLOCK / SECTION BOUNDARY
- SV## SOIL VAPOUR BORE
- SS## SUB SLAB SOIL VAPOUR PIN

TANK SCHEDULE

TANK	TYPE	PRODUCT	CLASS	CAPACITY	USAGE
1	UST	V95	3	27,400L	IN USE
2	UST	DIESEL	C1	27,400L	IN USE
3	UST	E10	3	27,400L	IN USE
4	UST	V98	3	20,000L	NOT IN USE
5	UST	ULP	3	59,400L	IN USE
6	AST	LPG	2.1	7,500L	NOT IN USE
7	LPG EXCHANGE		2.1	9x4kg, 42x9kg	IN USE

NOTE

LPG TANK (TANK 6) DECOMMISSIONED, NITROGEN PURGED.
 WELLS CONNECTED TO RECOVERY SYSTEM: MW01, MW02, MW05, MW06, MW07, MW10, EW01 & EW02.

0 10m

1:600 AT A3 APPROXIMATE

REFERENCE: CALTEX 'DANGEROUS GOODS PLAN' DRAWING NO. 22546-DG
 REV. B DATED 25/11/2011 SUPPLIED BY CLIENT.



geotechnical & environmental
drafting support



Figure prepared for WSP by
InSite Remediation Services Pty Ltd






CALTEX HOLT SERVICE STATION
 1 HARDWICK CRESCENT
 HOLT ACT

FIGURE 7e
BI-ANNUAL SOIL VAPOUR
SAMPLING LOCATIONS



LEGEND

 Proposed Restricted Use Zone

- Block 26, Section 51
- Block 34, Section 51
- Block 35, Section 51
- Block 47, Section 51
- Block 2, Section 53
- Block 5, Section 53

TANK SCHEDULE

TANK	TYPE	PRODUCT	CLASS	CAPACITY	USAGE
1	UST	V95	3	27,400L	IN USE
2	UST	DIESEL	01	27,400L	IN USE
3	UST	E90	3	27,400L	IN USE
4	UST	V98	3	28,000L	NOT IN USE
5	UST	MLP	3	59,400L	IN USE
6	AST	LPG	21	7,500L	NOT IN USE
7	LPG EXCHANGE		21	964kg, 42x29kg	IN USE

NOTE

LPG TANK (TANK 4) DECOMMISSIONED, NITROGEN PURGED

NTS

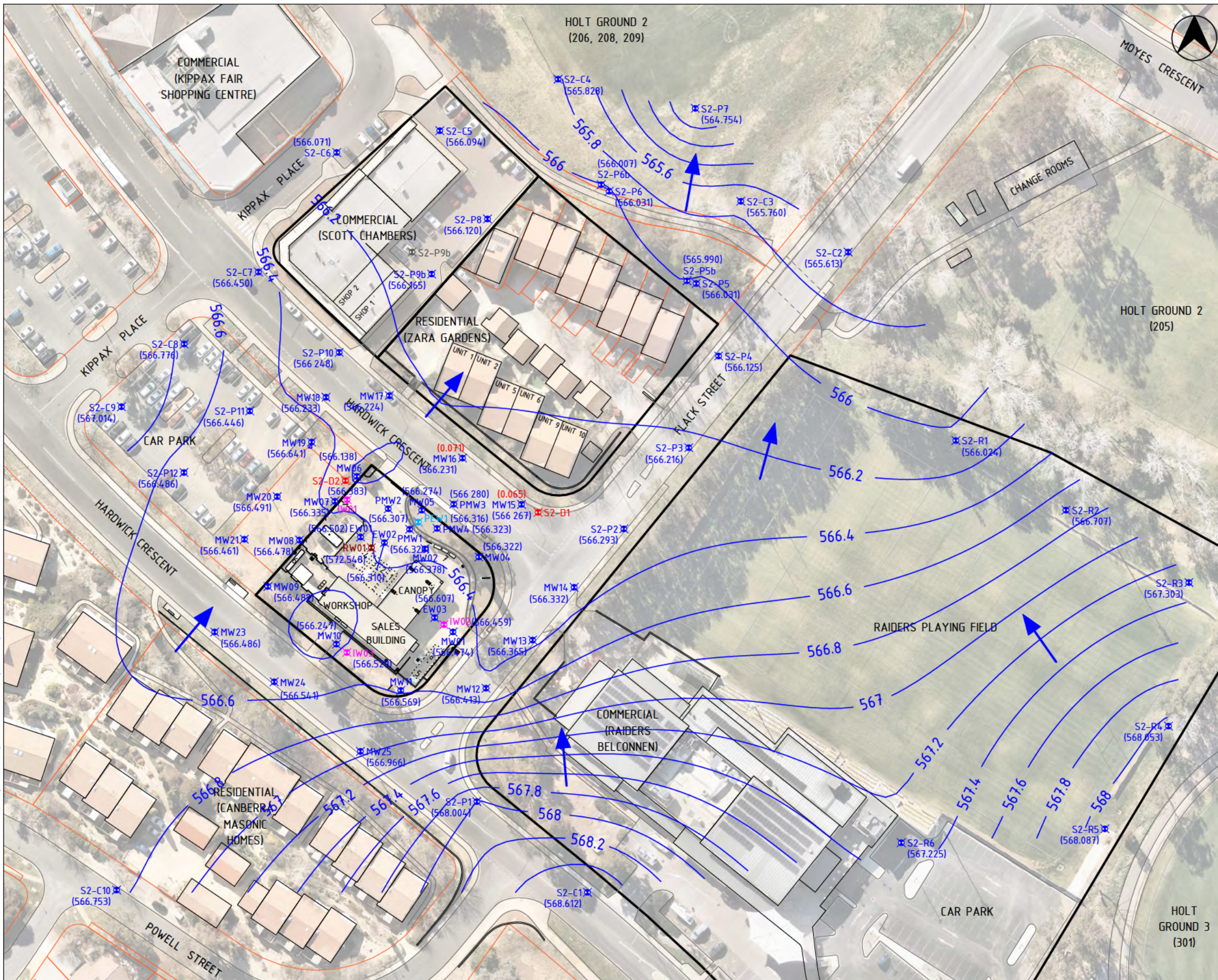
REFERENCE: CALTEX 'DANGEROUS GOODS PLAN' DRAWING NO. 22544-DG
 REV. B DATED 25/11/2011 AND VERIS SURVEY 21267-01 DATED 02/10/2020 SUPPLIED BY CLIENT.



CALTEX HOLT SERVICE STATION
 HARDWICK CRESCENT
 HOLT ACT

Figure 8
 Proposed Groundwater Restricted Use Plan

aerial image nearmap august 2020
 block & section data from http://www.actmap.act.gov.au
 drawn by laurie white at www.reumad.com.au
 Tue, 4 May 2021 12:35:42 PM
 D:\Google Drive\WSP\HOLT\FIGURES GHE 2021\FEB\1\CALTEX HOLT GHE FEB 2021 103 V1.vwx



LEGEND

- PROPERTY BOUNDARY
- BLOCK / SECTION BOUNDARY
- #### x GROUNDWATER MONITORING WELL
- PEW## x EXTRACTION WELL
- IW## x INJECTION WELL
- RW## x RECOVERY WELL
- S2-D# x CORED BOREHOLE
- #### x BACKFILLED OR DESTROYED WELL
- #— GROUNDWATER ELEVATION CONTOUR IN 0.2m INTERVALS (mAHD)
- (###.###) GROUNDWATER ELEVATION LEVEL IN MONITORING WELL (mAHD)
- INFERRED DIRECTION OF GROUNDWATER FLOW
- (##.###) APPARENT LNAPL THICKNESS (m)

NOTE

GROUNDWATER & LNAPL LEVELS GAUGED FEBRUARY 2021.
 RW01 OMITTED FROM GROUNDWATER CONTOUR CREATION.

0 25m

1:050 AT A3 APPROXIMATE

REFERENCE: CALTEX 'DANGEROUS GOODS PLAN' DRAWING NO. 22546-DG
 REV. B DATED 25/11/2011 AND VERIS SURVEY 217267.01 DATED 02/10/2020 SUPPLIED BY CLIENT.



technical services
geotechnical & environmental
drafting support



Figure prepared for WSP by
InSite Remediation Services Pty Ltd





CALTEX HOLT SERVICE STATION
 1 HARDWICK CRESCENT
 HOLT ACT

FIGURE 9
GROUNDWATER ELEVATION &
CONTOUR PLAN - FEBRUARY 2021