

# MOLONGLO / COOMBS & WRIGHT TREE ASSESSMENT

Tree N°: 1077



Regulated Tree:	N
Classification of Tree Quality:	
• Arboricultural Assessment	P
• Contribution to Urban Amenity	P
Recommendation:	Remove
Location	

## Survey Details:

Organisation:	dsb Landscape Architects	Grid Co-ordinates:	E 203050.947	N 600476.707
Date of Survey:	4 <sup>th</sup> November 2009	Assessor ID:	JL & ST	

## Tree Details:

Species:	Eucalyptus bicostata			Common Name:	Blue gum		
Height:	5.5	Canopy spread:	3	Trunk Circum:	900	N° of Trunks	3
Health/Condition:	Relative density of foliage						L
	Amount of dead wood in canopy						L
	Prevalence of insect attack or disease						L
	Prevalence of epicormic growth						L
	Prevalence of mistletoe						H
Overall health/condition of the tree						P	
Age:	A	Age/Health/Condition:	A/P	Form:	S	Hazard Potential:	L
Habitat Value:	N			Tolerance to Disturbance:	M		

## Contribution to Future Urban Amenity:

Scenic:	L	Rareness or Commonness:	M	Habitat quality:	M	Cultural, Social, Scientific:	L
Contribution to Immediate Landscaping:		L	Comment: Unsuitable species, poor coppice growth.				
Economic justification for retention or removal:							
Ameliorative work to reduce Risk:			N	Is work cost effective?:			
Landscape Groups:		Comment:					

## Tree Protection and Management:

Tree Protection Zone & Conditions:	M	b, c & d always apply					
Arboricultural Notes:	Dying.						

# MOLONGLO / COOMBS & WRIGHT TREE ASSESSMENT

Tree N°: 1078



Regulated Tree:	N
Classification of Tree Quality:	
• Arboricultural Assessment	P
• Contribution to Urban Amenity	P
Recommendation:	Remove
Location	

## Survey Details:

Organisation:	dsb Landscape Architects	Grid Co-ordinates:	E 203048.814	N 600478.328
Date of Survey:	4 <sup>th</sup> November 2009	Assessor ID:	JL & ST	

## Tree Details:

Species:	Eucalyptus rubida			Common Name:	Candle bark		
Height:	8	Canopy spread:	4	Trunk Circum:	1100	N° of Trunks	2
Health/Condition:	Relative density of foliage						M
	Amount of dead wood in canopy						H
	Prevalence of insect attack or disease						H
	Prevalence of epicormic growth						M
	Prevalence of mistletoe						H
Overall health/condition of the tree						P	
Age:	A	Age/Health/Condition:	A/P	Form:	U	Hazard Potential:	M
Habitat Value:	N			Tolerance to Disturbance:	M		

## Contribution to Future Urban Amenity:

Scenic:	L	Rareness or Commonness:	M	Habitat quality:	M	Cultural, Social, Scientific:	L	
Contribution to Immediate Landscaping:		L	Comment: Poor form.					
Economic justification for retention or removal:								
Ameliorative work to reduce Risk:			Y	Is work cost effective?:				N
Landscape Groups:		Comment:						

## Tree Protection and Management:

Tree Protection Zone & Conditions:	M	b, c & d always apply
Arboricultural Notes:	Removing trunk will damage tree.	

# MOLONGLO / COOMBS & WRIGHT TREE ASSESSMENT

Tree N<sup>o</sup>: 1079



Regulated Tree:	Y
Classification of Tree Quality:	
• Arboricultural Assessment	P
• Contribution to Urban Amenity	P
Recommendation:	Remove
Location	

## Survey Details:

Organisation:	dsb Landscape Architects	Grid Co-ordinates:	E 203048.121 N 600471.894
Date of Survey:	4 <sup>th</sup> November 2009	Assessor ID:	JL & ST

## Tree Details:

Species:	Eucalyptus rubida			Common Name:	Candle bark		
Height:	9.5	Canopy spread:	6	Trunk Circum:	1800	N <sup>o</sup> of Trunks	4
Health/Condition:	Relative density of foliage						M
	Amount of dead wood in canopy						H
	Prevalence of insect attack or disease						H
	Prevalence of epicormic growth						L
	Prevalence of mistletoe						H
Overall health/condition of the tree						P	
Age:	A	Age/Health/Condition:	A/P	Form:	U	Hazard Potential:	M
Habitat Value:	N			Tolerance to Disturbance:	M		

## Contribution to Future Urban Amenity:

Scenic:	L	Rareness or Commonness:	M	Habitat quality:	M	Cultural, Social, Scientific:	L	
Contribution to Immediate Landscaping:		L	Comment: Poor form.					
Economic justification for retention or removal:								
Ameliorative work to reduce Risk:			Y	Is work cost effective?:				N
Landscape Groups:		Comment:						

## Tree Protection and Management:

Tree Protection Zone & Conditions:	M	b, c & d always apply
Arboricultural Notes:	Removing trunks will damage tree.	

# MOLONGLO / COOMBS & WRIGHT TREE ASSESSMENT

Tree N°: 1080



Regulated Tree:	N
Classification of Tree Quality:	
• Arboricultural Assessment	M
• Contribution to Urban Amenity	M
Recommendation:	Retain
Location	

## Survey Details:

Organisation:	dsb Landscape Architects	Grid Co-ordinates:	E 203039.290	N 600463.674
Date of Survey:	4 <sup>th</sup> November 2009	Assessor ID:	JL & ST	

## Tree Details:

Species:	Eucalyptus rubida			Common Name:	Candle bark		
Height:	8	Canopy spread:	4	Trunk Circum:	1400	N° of Trunks	2
Health/Condition:	Relative density of foliage						M
	Amount of dead wood in canopy						M
	Prevalence of insect attack or disease						H
	Prevalence of epicormic growth						M
	Prevalence of mistletoe						H
Overall health/condition of the tree						G	
Age:	A	Age/Health/Condition:	A/G	Form:	T	Hazard Potential:	L
Habitat Value:	N			Tolerance to Disturbance:	M		

## Contribution to Future Urban Amenity:

Scenic:	H	Rareness or Commonness:	M	Habitat quality:	M	Cultural, Social, Scientific:	L
Contribution to Immediate Landscaping:		M	Comment:		Interesting form.		
Economic justification for retention or removal:							
Ameliorative work to reduce Risk:			N	Is work cost effective?:			
Landscape Groups:		Comment:					

## Tree Protection and Management:

Tree Protection Zone & Conditions:	M	b, c & d always apply
Arboricultural Notes:		

# MOLONGLO / COOMBS & WRIGHT TREE ASSESSMENT

Tree N°: 1081



Regulated Tree:	N
Classification of Tree Quality:	
• Arboricultural Assessment	M
• Contribution to Urban Amenity	M
Recommendation:	Retain
Location	

## Survey Details:

Organisation:	dsb Landscape Architects	Grid Co-ordinates:	E 203033.337 N 600454.452
Date of Survey:	4 <sup>th</sup> November 2009	Assessor ID:	JL & ST

## Tree Details:

Species:	Eucalyptus rubida			Common Name:	Candle bark		
Height:	8.5	Canopy spread:	4	Trunk Circum:	1300	N° of Trunks	2
Health/Condition:	Relative density of foliage						H
	Amount of dead wood in canopy						H
	Prevalence of insect attack or disease						H
	Prevalence of epicormic growth						M
	Prevalence of mistletoe						H
Overall health/condition of the tree						G	
Age:	A	Age/Health/Condition:	A/G	Form:	T	Hazard Potential:	L
Habitat Value:	N			Tolerance to Disturbance:	M		

## Contribution to Future Urban Amenity:

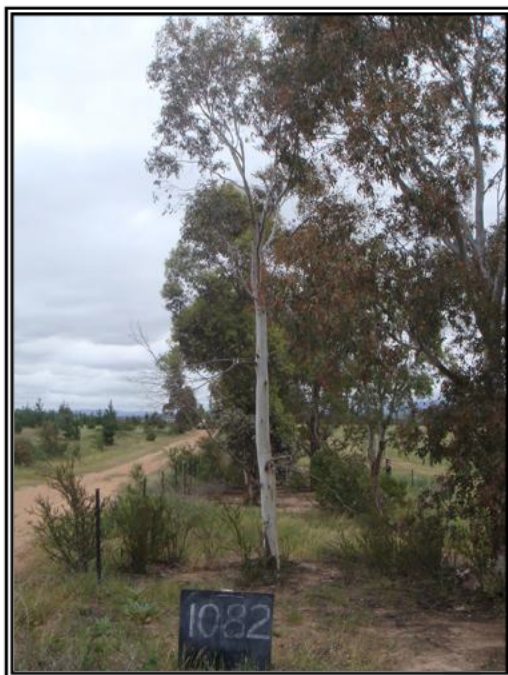
Scenic:	H	Rareness or Commonness:	M	Habitat quality:	M	Cultural, Social, Scientific:	L
Contribution to Immediate Landscaping:	M		Comment:	Good healthy tree.			
Economic justification for retention or removal:							
Ameliorative work to reduce Risk:	N		Is work cost effective?:				
Landscape Groups:			Comment:				

## Tree Protection and Management:

Tree Protection Zone & Conditions:	M	b, c & d always apply
Arboricultural Notes:	Remove trunk at base.	

# MOLONGLO / COOMBS & WRIGHT TREE ASSESSMENT

Tree N<sup>o</sup>: 1082



Regulated Tree:	N
Classification of Tree Quality:	
• Arboricultural Assessment	M
• Contribution to Urban Amenity	M
Recommendation:	Retain
Location	

## Survey Details:

Organisation:	dsb Landscape Architects	Grid Co-ordinates:	E 203034.222	N 600450.956
Date of Survey:	4 <sup>th</sup> November 2009	Assessor ID:	JL & ST	

## Tree Details:

Species:	Eucalyptus mannifera			Common Name:	White brittle gum		
Height:	8.5	Canopy spread:	4	Trunk Circum:	800	N <sup>o</sup> of Trunks	1
Health/Condition:	Relative density of foliage						M
	Amount of dead wood in canopy						M
	Prevalence of insect attack or disease						H
	Prevalence of epicormic growth						H
	Prevalence of mistletoe						H
Overall health/condition of the tree						G	
Age:	A	Age/Health/Condition:	A/G	Form:	T	Hazard Potential:	L
Habitat Value:	N			Tolerance to Disturbance:	M		

## Contribution to Future Urban Amenity:

Scenic:	H	Rareness or Commonness:	M	Habitat quality:	M	Cultural, Social, Scientific:	L
Contribution to Immediate Landscaping:	M		Comment:	Good tree.			
Economic justification for retention or removal:							
Ameliorative work to reduce Risk:	N		Is work cost effective?:				
Landscape Groups:			Comment:				

## Tree Protection and Management:

Tree Protection Zone & Conditions:	M	b, c & d always apply
Arboricultural Notes:	Remove small dead branches.	

# MOLONGLO / COOMBS & WRIGHT TREE ASSESSMENT

Tree N<sup>o</sup>: 1083



Regulated Tree:	N
Classification of Tree Quality:	
• Arboricultural Assessment	M
• Contribution to Urban Amenity	M
Recommendation:	Retain
Location	

## Survey Details:

Organisation:	dsb Landscape Architects	Grid Co-ordinates:	E 203029.109	N 600448.129
Date of Survey:	4 <sup>th</sup> November 2009	Assessor ID:	JL & ST	

## Tree Details:

Species:	Eucalyptus rubida			Common Name:	Candle bark		
Height:	7	Canopy spread:	4	Trunk Circum:	800	N <sup>o</sup> of Trunks	1
Health/Condition:	Relative density of foliage						M
	Amount of dead wood in canopy						H
	Prevalence of insect attack or disease						H
	Prevalence of epicormic growth						M
	Prevalence of mistletoe						H
Overall health/condition of the tree						G	
Age:	A	Age/Health/Condition:	A/G	Form:	T	Hazard Potential:	L
Habitat Value:	N			Tolerance to Disturbance:	M		

## Contribution to Future Urban Amenity:

Scenic:	M	Rareness or Commonness:	M	Habitat quality:	M	Cultural, Social, Scientific:	L
Contribution to Immediate Landscaping:	M		Comment:	Good tree.			
Economic justification for retention or removal:							
Ameliorative work to reduce Risk:	N			Is work cost effective?:			
Landscape Groups:		Comment:					

## Tree Protection and Management:

Tree Protection Zone & Conditions:	M	b, c & d always apply
Arboricultural Notes:		

# MOLONGLO / COOMBS & WRIGHT TREE ASSESSMENT

Tree N<sup>o</sup>: 1084



Regulated Tree:	N
Classification of Tree Quality:	
• Arboricultural Assessment	M
• Contribution to Urban Amenity	M
Recommendation:	Retain
Location	

## Survey Details:

Organisation:	dsb Landscape Architects	Grid Co-ordinates:	E 203026.632	N 600440.027
Date of Survey:	4 <sup>th</sup> November 2009	Assessor ID:	JL & ST	

## Tree Details:

Species:	Eucalyptus rubida			Common Name:	Candle bark		
Height:	8.5	Canopy spread:	4	Trunk Circum:	900	N <sup>o</sup> of Trunks	1
Health/Condition:	Relative density of foliage						H
	Amount of dead wood in canopy						H
	Prevalence of insect attack or disease						H
	Prevalence of epicormic growth						M
	Prevalence of mistletoe						H
Overall health/condition of the tree						G	
Age:	A	Age/Health/Condition:	A/G	Form:	T	Hazard Potential:	L
Habitat Value:	N			Tolerance to Disturbance:	M		

## Contribution to Future Urban Amenity:

Scenic:	H	Rareness or Commonness:	M	Habitat quality:	M	Cultural, Social, Scientific:	L
Contribution to Immediate Landscaping:	M		Comment:	Good tree.			
Economic justification for retention or removal:							
Ameliorative work to reduce Risk:	N			Is work cost effective?:			
Landscape Groups:		Comment:					

## Tree Protection and Management:

Tree Protection Zone & Conditions:	M	b, c & d always apply
Arboricultural Notes:	Remove small lower branches.	

# MOLONGLO / COOMBS & WRIGHT TREE ASSESSMENT

Tree N°: 1085



Regulated Tree:	N
Classification of Tree Quality:	
• Arboricultural Assessment	M
• Contribution to Urban Amenity	M
Recommendation:	Retain
Location	

## Survey Details:

Organisation:	dsb Landscape Architects	Grid Co-ordinates:	E 203021.044	N 600436.087
Date of Survey:	4 <sup>th</sup> November 2009	Assessor ID:	JL & ST	

## Tree Details:

Species:	Eucalyptus rubida			Common Name:	Candle bark		
Height:	11	Canopy spread:	6	Trunk Circum:	1300	N° of Trunks	1
Health/Condition:	Relative density of foliage						H
	Amount of dead wood in canopy						H
	Prevalence of insect attack or disease						H
	Prevalence of epicormic growth						H
	Prevalence of mistletoe						H
	Overall health/condition of the tree						G
Age:	A	Age/Health/Condition:	A/G	Form:	T	Hazard Potential:	L
Habitat Value:	N			Tolerance to Disturbance:	M		

## Contribution to Future Urban Amenity:

Scenic:	H	Rareness or Commonness:	M	Habitat quality:	M	Cultural, Social, Scientific:	L
Contribution to Immediate Landscaping:	M		Comment:	Reasonably good form.			
Economic justification for retention or removal:							
Ameliorative work to reduce Risk:	N		Is work cost effective?:				
Landscape Groups:		Comment:					

## Tree Protection and Management:

Tree Protection Zone & Conditions:	M	b, c & d always apply
Arboricultural Notes:	Remove lowest branches, potentially weak union at 4 metres.	

# MOLONGLO / COOMBS & WRIGHT TREE ASSESSMENT

Tree N°:	1086
----------	------



Regulated Tree:	N
Classification of Tree Quality:	
• Arboricultural Assessment	M
• Contribution to Urban Amenity	M
Recommendation:	Retain
Location	

## Survey Details:

Organisation:	dsb Landscape Architects	Grid Co-ordinates:	E 203018.685	N 600427.345
Date of Survey:	4 <sup>th</sup> November 2009	Assessor ID:	JL & ST	

## Tree Details:

Species:	Eucalyptus rubida			Common Name:	Candle bark		
Height:	11	Canopy spread:	6	Trunk Circum:	1300	N° of Trunks	1
Health/Condition:	Relative density of foliage						M
	Amount of dead wood in canopy						H
	Prevalence of insect attack or disease						M
	Prevalence of epicormic growth						H
	Prevalence of mistletoe						H
Overall health/condition of the tree						G	
Age:	A	Age/Health/Condition:	A/G	Form:	T	Hazard Potential:	L
Habitat Value:	N			Tolerance to Disturbance:	M		

## Contribution to Future Urban Amenity:

Scenic:	H	Rareness or Commonness:	M	Habitat quality:	M	Cultural, Social, Scientific:	L
Contribution to Immediate Landscaping:	M		Comment:	Good tree.			
Economic justification for retention or removal:							
Ameliorative work to reduce Risk:	N		Is work cost effective?:				
Landscape Groups:		Comment:					

## Tree Protection and Management:

Tree Protection Zone & Conditions:	M	b, c & d always apply
Arboricultural Notes:	Remove diseased low branch.	

# MOLONGLO / COOMBS & WRIGHT TREE ASSESSMENT

Tree N°: 1087



Regulated Tree:	N
Classification of Tree Quality:	
• Arboricultural Assessment	M
• Contribution to Urban Amenity	M
Recommendation:	Retain
Location	

## Survey Details:

Organisation:	dsb Landscape Architects	Grid Co-ordinates:	E 203014.990	N 600427.190
Date of Survey:	4 <sup>th</sup> November 2009	Assessor ID:	JL & ST	

## Tree Details:

Species:	Eucalyptus rubida			Common Name:	Candle bark		
Height:	10	Canopy spread:	5	Trunk Circum:	1100	N° of Trunks	1
Health/Condition:	Relative density of foliage						H
	Amount of dead wood in canopy						H
	Prevalence of insect attack or disease						H
	Prevalence of epicormic growth						M
	Prevalence of mistletoe						H
Overall health/condition of the tree						G	
Age:	A	Age/Health/Condition:	A/G	Form:	T	Hazard Potential:	L
Habitat Value:	N			Tolerance to Disturbance:	M		

## Contribution to Future Urban Amenity:

Scenic:	H	Rareness or Commonness:	M	Habitat quality:	M	Cultural, Social, Scientific:	L
Contribution to Immediate Landscaping:	M		Comment:	Good tree.			
Economic justification for retention or removal:							
Ameliorative work to reduce Risk:	N			Is work cost effective?:			
Landscape Groups:		Comment:					

## Tree Protection and Management:

Tree Protection Zone & Conditions:	M	b, c & d always apply
Arboricultural Notes:	Remove small lower branch.	

# MOLONGLO / COOMBS & WRIGHT TREE ASSESSMENT

Tree N<sup>o</sup>: 1088



Regulated Tree:	N
Classification of Tree Quality:	
• Arboricultural Assessment	M
• Contribution to Urban Amenity	M
Recommendation:	Retain
Location	

## Survey Details:

Organisation:	dsb Landscape Architects	Grid Co-ordinates:	E 203013.118	N 600418.604
Date of Survey:	4 <sup>th</sup> November 2009	Assessor ID:	JL & ST	

## Tree Details:

Species:	Eucalyptus rubida			Common Name:	Candle bark		
Height:	10.5	Canopy spread:	6	Trunk Circum:	1300	N <sup>o</sup> of Trunks	1
Health/Condition:	Relative density of foliage						H
	Amount of dead wood in canopy						H
	Prevalence of insect attack or disease						H
	Prevalence of epicormic growth						M
	Prevalence of mistletoe						H
Overall health/condition of the tree						G	
Age:	A	Age/Health/Condition:	A/G	Form:	T	Hazard Potential:	L
Habitat Value:	N			Tolerance to Disturbance:	M		

## Contribution to Future Urban Amenity:

Scenic:	H	Rareness or Commonness:	M	Habitat quality:	M	Cultural, Social, Scientific:	L
Contribution to Immediate Landscaping:	M		Comment:	Good form.			
Economic justification for retention or removal:							
Ameliorative work to reduce Risk:	N		Is work cost effective?:				
Landscape Groups:		Comment:					

## Tree Protection and Management:

Tree Protection Zone & Conditions:	M	b, c & d always apply
Arboricultural Notes:	Remove only small lower branches.	

# MOLONGLO / COOMBS & WRIGHT TREE ASSESSMENT

Tree N°: 1089



Regulated Tree:	N
Classification of Tree Quality:	
• Arboricultural Assessment	M
• Contribution to Urban Amenity	M
Recommendation:	Retain
Location	

## Survey Details:

Organisation:	dsb Landscape Architects	Grid Co-ordinates:	E 203008.946	N 600417.699
Date of Survey:	4 <sup>th</sup> November 2009	Assessor ID:	JL & ST	

## Tree Details:

Species:	Eucalyptus rubida			Common Name:	Candle bark		
Height:	9	Canopy spread:	5	Trunk Circum:	900	N° of Trunks	1
Health/Condition:	Relative density of foliage						M
	Amount of dead wood in canopy						H
	Prevalence of insect attack or disease						H
	Prevalence of epicormic growth						M
	Prevalence of mistletoe						H
Overall health/condition of the tree						G	
Age:	A	Age/Health/Condition:	A/G	Form:	T	Hazard Potential:	L
Habitat Value:	N			Tolerance to Disturbance:	M		

## Contribution to Future Urban Amenity:

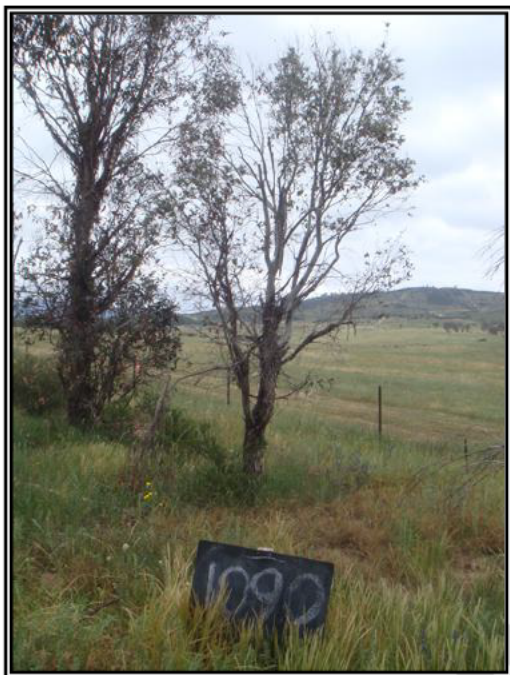
Scenic:	H	Rareness or Commonness:	M	Habitat quality:	M	Cultural, Social, Scientific:	L
Contribution to Immediate Landscaping:	M		Comment:	Good tree.			
Economic justification for retention or removal:							
Ameliorative work to reduce Risk:	N		Is work cost effective?:				
Landscape Groups:			Comment:				

## Tree Protection and Management:

Tree Protection Zone & Conditions:	M	b, c & d always apply
Arboricultural Notes:	Minor disease in trunk.	

# MOLONGLO / COOMBS & WRIGHT TREE ASSESSMENT

Tree N°: 1090



Regulated Tree:	N
Classification of Tree Quality:	
• Arboricultural Assessment	P
• Contribution to Urban Amenity	P
Recommendation:	Remove
Location	

## Survey Details:

Organisation:	dsb Landscape Architects	Grid Co-ordinates:	E 203002.539	N 600408.494
Date of Survey:	4 <sup>th</sup> November 2009	Assessor ID:	JL & ST	

## Tree Details:

Species:	Eucalyptus rubida			Common Name:	Candle bark		
Height:	8.5	Canopy spread:	2	Trunk Circum:	800	N° of Trunks	1
Health/Condition:	Relative density of foliage						L
	Amount of dead wood in canopy						L
	Prevalence of insect attack or disease						L
	Prevalence of epicormic growth						L
	Prevalence of mistletoe						H
Overall health/condition of the tree						P	
Age:	A	Age/Health/Condition:	A/P	Form:	S	Hazard Potential:	L
Habitat Value:	N			Tolerance to Disturbance:	M		

## Contribution to Future Urban Amenity:

Scenic:	L	Rareness or Commonness:	M	Habitat quality:	M	Cultural, Social, Scientific:	L
Contribution to Immediate Landscaping:		L	Comment:		Almost dead.		
Economic justification for retention or removal:							
Ameliorative work to reduce Risk:			N	Is work cost effective?:			
Landscape Groups:		Comment:					

## Tree Protection and Management:

Tree Protection Zone & Conditions:	M	b, c & d always apply
Arboricultural Notes:		

# MOLONGLO / COOMBS & WRIGHT TREE ASSESSMENT

Tree N<sup>o</sup>: 1091



Regulated Tree:	N
Classification of Tree Quality:	
• Arboricultural Assessment	P
• Contribution to Urban Amenity	P
Recommendation:	Remove
Location	

## Survey Details:

Organisation:	dsb Landscape Architects	Grid Co-ordinates:	E 202999.976	N 600404.644
Date of Survey:	4 <sup>th</sup> November 2009	Assessor ID:	JL & ST	

## Tree Details:

Species:	Eucalyptus bicostata			Common Name:	Blue gum		
Height:	8	Canopy spread:	4	Trunk Circum:	1300	N <sup>o</sup> of Trunks	2
Health/Condition:	Relative density of foliage						L
	Amount of dead wood in canopy						L
	Prevalence of insect attack or disease						L
	Prevalence of epicormic growth						M
	Prevalence of mistletoe						H
Overall health/condition of the tree						P	
Age:	A	Age/Health/Condition:	A/P	Form:	U	Hazard Potential:	M
Habitat Value:	N			Tolerance to Disturbance:	M		

## Contribution to Future Urban Amenity:

Scenic:	L	Rareness or Commonness:	M	Habitat quality:	M	Cultural, Social, Scientific:	L
Contribution to Immediate Landscaping:	L		Comment:	Unsuitable species.			
Economic justification for retention or removal:							
Ameliorative work to reduce Risk:	N			Is work cost effective?:			
Landscape Groups:		Comment:					

## Tree Protection and Management:

Tree Protection Zone & Conditions:	M	b, c & d always apply
Arboricultural Notes:	Almost dead.	

# MOLONGLO / COOMBS & WRIGHT TREE ASSESSMENT

Tree N°:	1092
----------	------



Regulated Tree:	N
Classification of Tree Quality:	
• Arboricultural Assessment	M
• Contribution to Urban Amenity	M
Recommendation:	Retain
Location	

## Survey Details:

Organisation:	dsb Landscape Architects	Grid Co-ordinates:	E 202998.416	N 600396.838
Date of Survey:	4 <sup>th</sup> November 2009	Assessor ID:	JL & ST	

## Tree Details:

Species:	Eucalyptus rubida			Common Name:	Candle bark		
Height:	7.5	Canopy spread:	4	Trunk Circum:	900	N° of Trunks	1
Health/Condition:	Relative density of foliage						M
	Amount of dead wood in canopy						H
	Prevalence of insect attack or disease						H
	Prevalence of epicormic growth						M
	Prevalence of mistletoe						H
Overall health/condition of the tree						G	
Age:	A	Age/Health/Condition:	A/G	Form:	T	Hazard Potential:	L
Habitat Value:	N			Tolerance to Disturbance:	M		

## Contribution to Future Urban Amenity:

Scenic:	H	Rareness or Commonness:	M	Habitat quality:	M	Cultural, Social, Scientific:	L
Contribution to Immediate Landscaping:	M		Comment:	Good young tree.			
Economic justification for retention or removal:							
Ameliorative work to reduce Risk:	N		Is work cost effective?:				
Landscape Groups:		Comment:					

## Tree Protection and Management:

Tree Protection Zone & Conditions:	M	b, c & d always apply
Arboricultural Notes:	Remove small lower branches.	

# MOLONGLO / COOMBS & WRIGHT TREE ASSESSMENT

Tree N°: 1093



Regulated Tree:	N
Classification of Tree Quality:	
• Arboricultural Assessment	P
• Contribution to Urban Amenity	P
Recommendation:	Remove
Location	

## Survey Details:

Organisation:	dsb Landscape Architects	Grid Co-ordinates:	E 202994.494	N600395.782
Date of Survey:	4 <sup>th</sup> November 2009	Assessor ID:	JL & ST	

## Tree Details:

Species:	Eucalyptus bicostata			Common Name:	Blue gum		
Height:	7	Canopy spread:	3	Trunk Circum:	800	N° of Trunks	1
Health/Condition:	Relative density of foliage						L
	Amount of dead wood in canopy						M
	Prevalence of insect attack or disease						L
	Prevalence of epicormic growth						M
	Prevalence of mistletoe						H
Overall health/condition of the tree						P	
Age:	A	Age/Health/Condition:	A/P	Form:	U	Hazard Potential:	M
Habitat Value:	N			Tolerance to Disturbance:	M		

## Contribution to Future Urban Amenity:

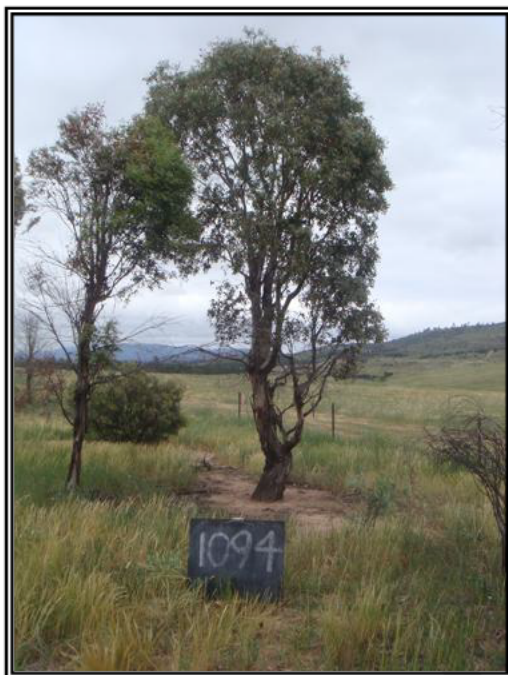
Scenic:	L	Rareness or Commonness:	M	Habitat quality:	M	Cultural, Social, Scientific:	L
Contribution to Immediate Landscaping:		L	Comment: Unsuitable species.				
Economic justification for retention or removal:							
Ameliorative work to reduce Risk:			N	Is work cost effective?:			
Landscape Groups:		Comment:					

## Tree Protection and Management:

Tree Protection Zone & Conditions:	M	b, c & d always apply
Arboricultural Notes:	Very poor form.	

# MOLONGLO / COOMBS & WRIGHT TREE ASSESSMENT

Tree N°: 1094



Regulated Tree:	N
Classification of Tree Quality:	
• Arboricultural Assessment	P
• Contribution to Urban Amenity	P
Recommendation:	Remove
Location	

## Survey Details:

Organisation:	dsb Landscape Architects	Grid Co-ordinates:	E 202990.281	N 600389.872
Date of Survey:	4 <sup>th</sup> November 2009	Assessor ID:	JL & ST	

## Tree Details:

Species:	Eucalyptus rubida			Common Name:	Candle bark		
Height:	6.5	Canopy spread:	3	Trunk Circum:	900	N° of Trunks	2
Health/Condition:	Relative density of foliage						M
	Amount of dead wood in canopy						M
	Prevalence of insect attack or disease						H
	Prevalence of epicormic growth						M
	Prevalence of mistletoe						H
Overall health/condition of the tree						P	
Age:	A	Age/Health/Condition:	A/P	Form:	U	Hazard Potential:	M
Habitat Value:	N			Tolerance to Disturbance:	M		

## Contribution to Future Urban Amenity:

Scenic:	L	Rareness or Commonness:	M	Habitat quality:	M	Cultural, Social, Scientific:	L
Contribution to Immediate Landscaping:		L	Comment: Poor form.				
Economic justification for retention or removal:							
Ameliorative work to reduce Risk:			N	Is work cost effective?:			
Landscape Groups:		Comment:					

## Tree Protection and Management:

Tree Protection Zone & Conditions:	M	b, c & d always apply
Arboricultural Notes:	Poor union at 2 metres.	

# MOLONGLO / COOMBS & WRIGHT TREE ASSESSMENT

Tree N°: 1095



Regulated Tree:	N
Classification of Tree Quality:	
• Arboricultural Assessment	P
• Contribution to Urban Amenity	P
Recommendation:	Remove
Location	

## Survey Details:

Organisation:	dsb Landscape Architects	Grid Co-ordinates:	E 202992.476	N 600388.394
Date of Survey:	4 <sup>th</sup> November 2009	Assessor ID:	JL & ST	

## Tree Details:

Species:	Eucalyptus viminalis			Common Name:	Ribbon gum		
Height:	5.5	Canopy spread:	2	Trunk Circum:	500	N° of Trunks	1
Health/Condition:	Relative density of foliage						L
	Amount of dead wood in canopy						L
	Prevalence of insect attack or disease						L
	Prevalence of epicormic growth						M
	Prevalence of mistletoe						H
Overall health/condition of the tree						P	
Age:	A	Age/Health/Condition:	A/P	Form:	U	Hazard Potential:	L
Habitat Value:	N			Tolerance to Disturbance:	M		

## Contribution to Future Urban Amenity:

Scenic:	L	Rareness or Commonness:	M	Habitat quality:	M	Cultural, Social, Scientific:	L
Contribution to Immediate Landscaping:	L		Comment:	Almost dead.			
Economic justification for retention or removal:							
Ameliorative work to reduce Risk:	N		Is work cost effective?:				
Landscape Groups:		Comment:					

## Tree Protection and Management:

Tree Protection Zone & Conditions:	M	b, c & d always apply
Arboricultural Notes:		