
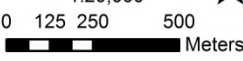





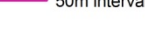


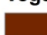



Appendix 4
Gudgenby River
Vegetation
Dominance Change
 Map Number 4.4b
 1:20,000

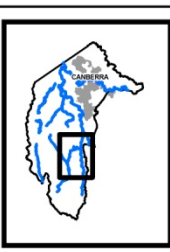




0 125 250 500
 Meters

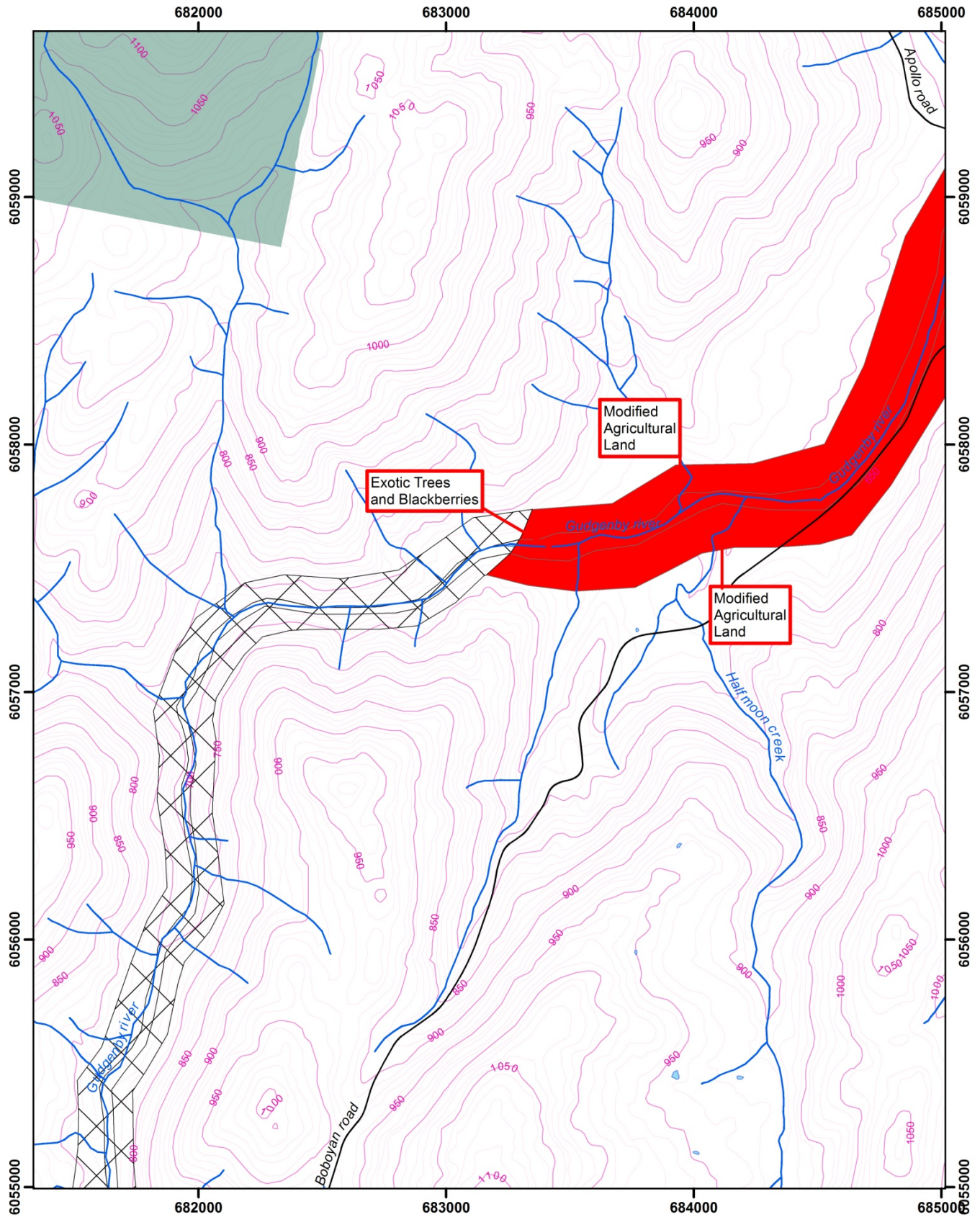
-  Gates
-  Fences
-  Roads
-  River
-  ACT Border
-  Namadgi NP

- Contours**
-  10m intervals
 -  50m intervals


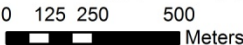
- Vegetation Dominance Change**
-  Burgan Derived Tbl Shrubland
 -  Silver Wattle Shrubland
 -  Exotics
 -  Native; No Change

Contact Details Date: 23rd July, 2009
 ACT Government
 Conservation, Planning and Research
 Gudgenby Homestead,
 Barton Highway,
 PO Box 158 Canberra ACT 2601
 Telephone 13 22 81
 Disclaimer: ACT Government does
 not warrant that the data is free from errors.
 Data Copyright: © Australian Capital Territory,
 Canberra 2009

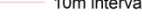
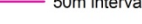


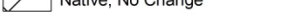
Appendix 4
Gudgenby River
Vegetation Dominance Change
 Map Number 4.5b
 1:20,000





0 125 250 500
 Meters

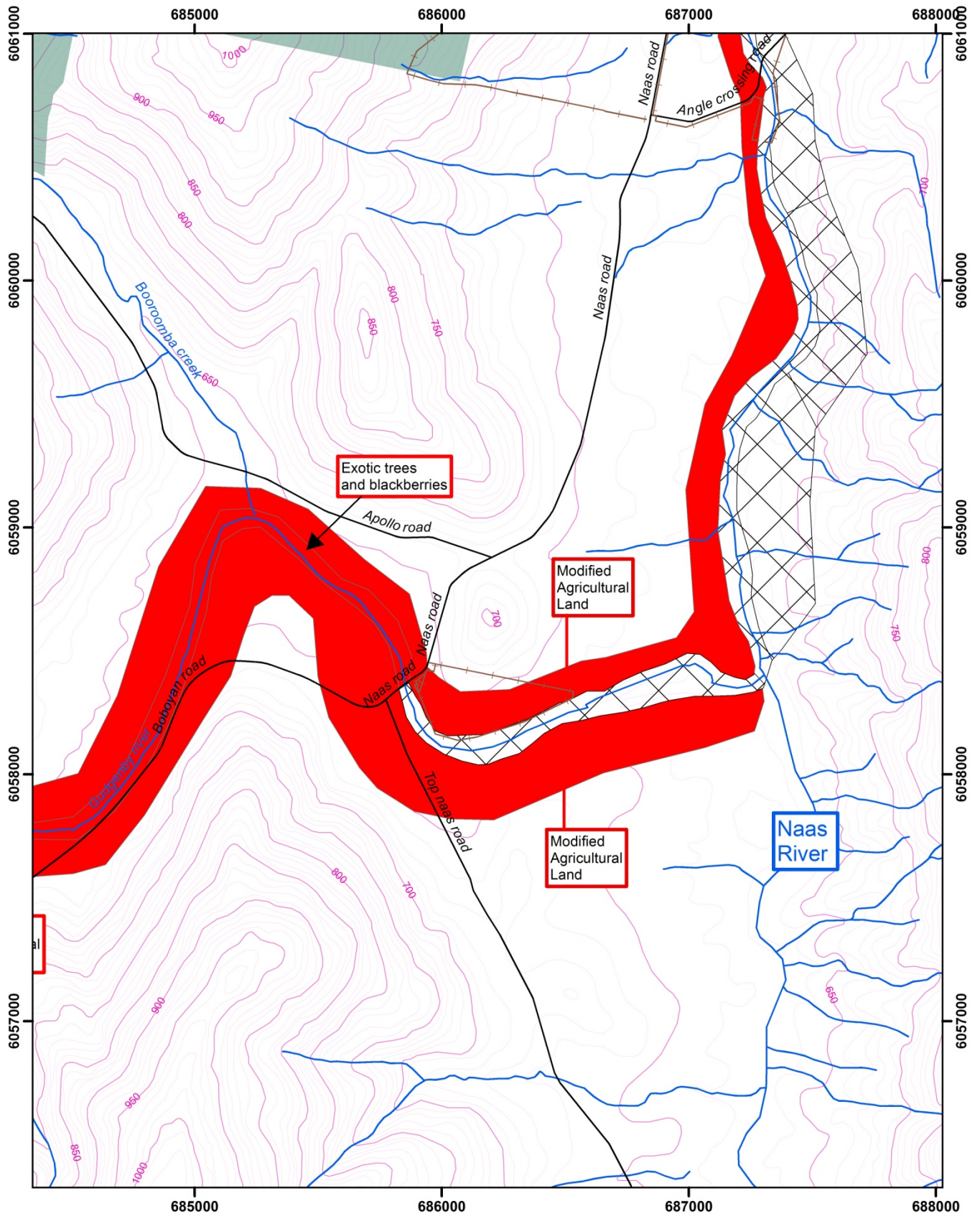
-  Gates
-  Fences
-  Roads
-  River
-  ACT Border
-  Namadgi NP

- Contours**
-  10m intervals
 -  50m intervals

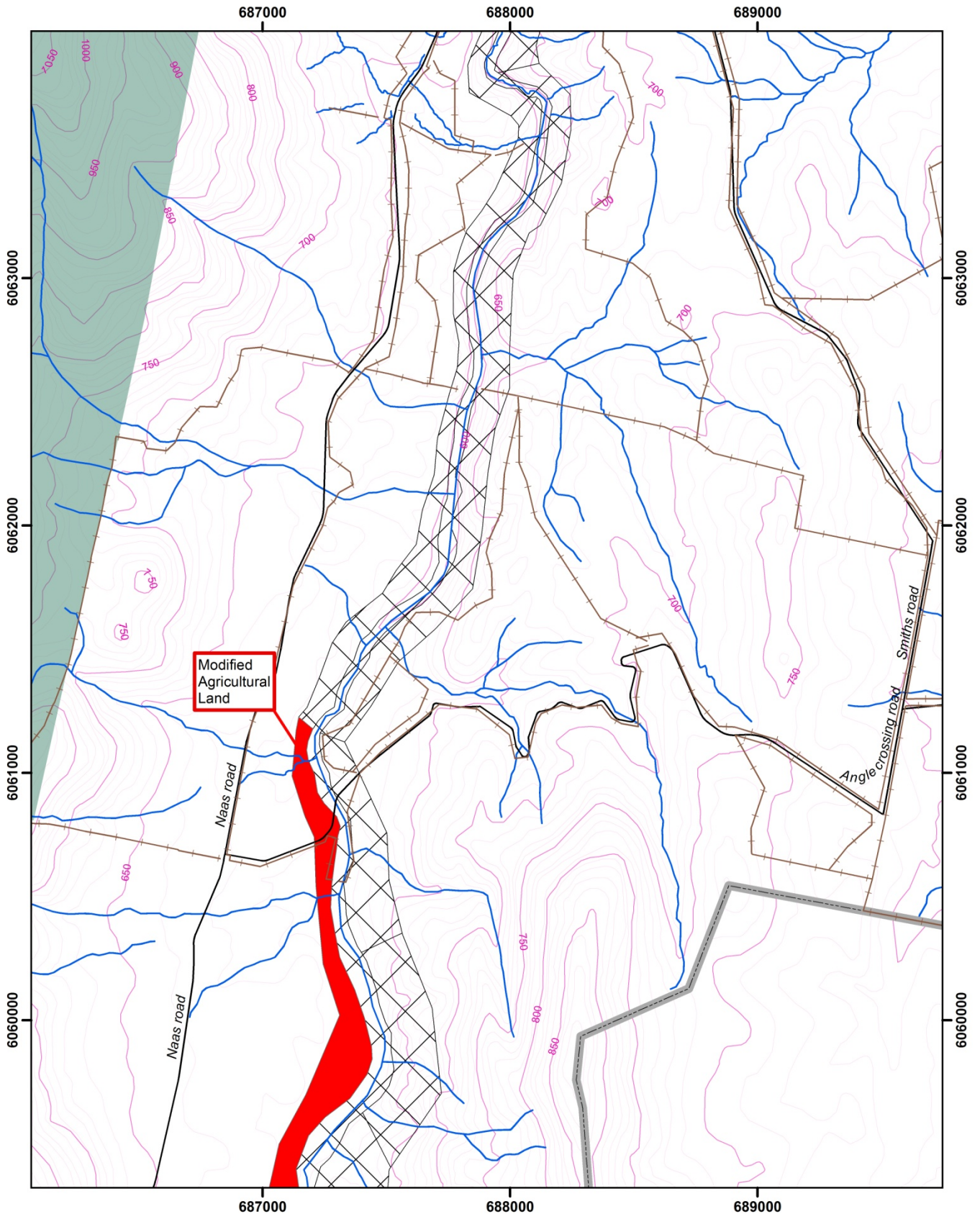
- Vegetation Dominance Change**
-  Burgan Derived Tbl Shrubland
 -  Silver Wattle Shrubland
 -  Exotics
 -  Native; No Change

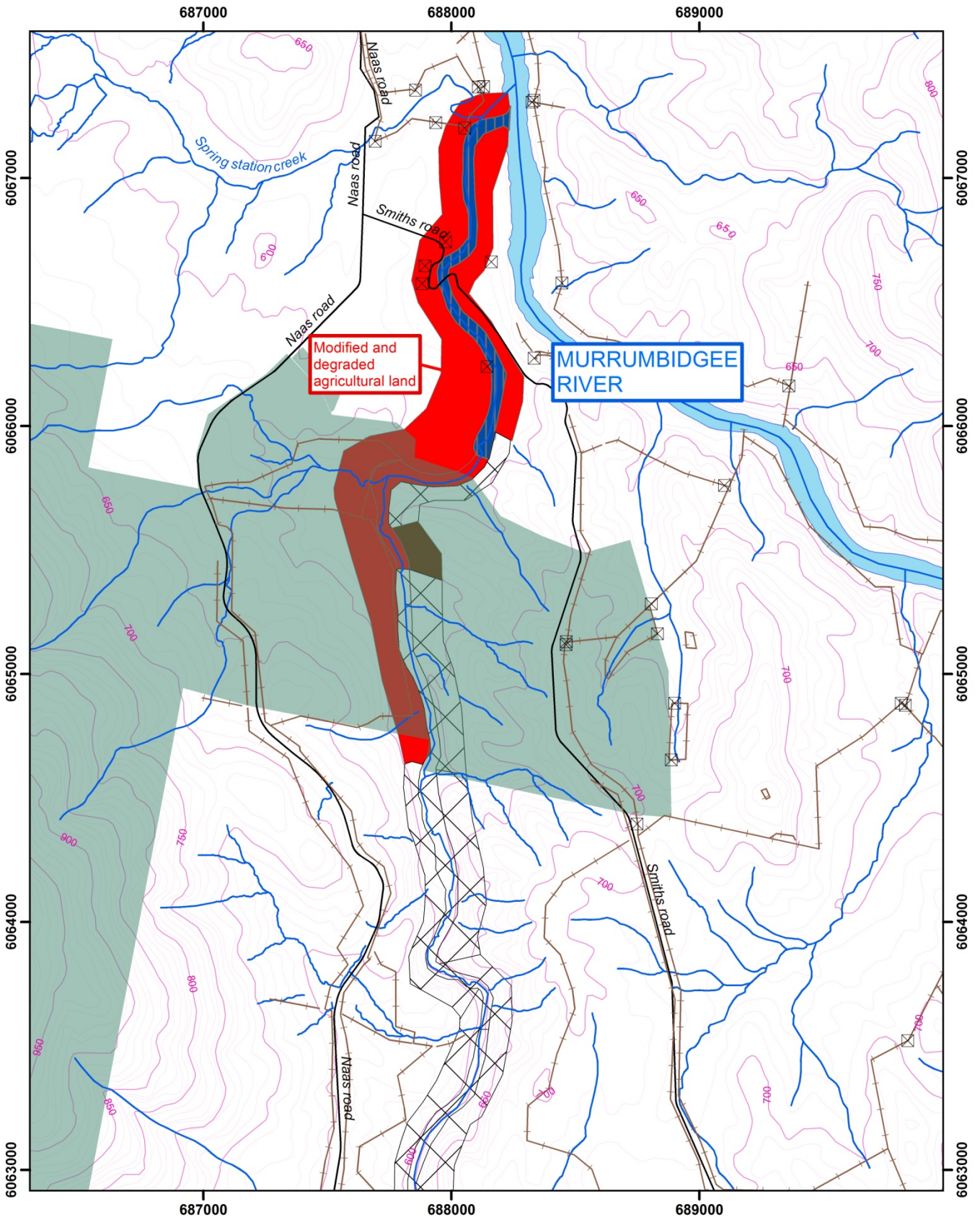
Contact Details Date: 23rd July 2009
 ACT Government
 Conservation, Planning and Research
 Gungahlin Homestead,
 Barton Highway,
 PO Box 158 Canberra ACT 2601
 Telephone 13 22 81
 Disclaimer: ACT Government does not warrant that the data is free from errors.
 Data Copyright: © Australian Capital Territory, Canberra 2009



<p>Appendix 4</p> <p>Gudgenby River</p> <p>Vegetation Dominance Change</p> <p>Map Number 4.6b</p> <p>1:20,000</p> <p>0 125 250 500 Meters</p>	<p>⊠ Gates</p> <p>— Fences</p> <p>— Roads</p> <p>— River</p> <p>--- ACT Border</p> <p>■ Namadgi NP</p>	<p>Contours</p> <p>— 10m intervals</p> <p>— 50m intervals</p>	<p>Vegetation Dominance Change</p> <p>■ Burgan Derived Tbl Shrubland</p> <p>■ Silver Wattle Shrubland</p> <p>■ Exotics</p> <p>□ Native; No Change</p>		<p>Contact Details Date: 23rd July 2009</p> <p>ACT Government Conservation, Planning and Research Gungahlin Homestead, Barton Highway, PO Box 168 Canberra ACT 2601 Telephone: 13 22 81</p> <p>Disclaimer: ACT Government does not warrant that the data is free from errors.</p> <p>Data Copyright: © Australian Capital Territory, Canberra 2009</p>



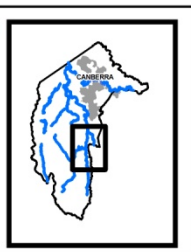

<p>Appendix 4</p> <p>Gudgenby River</p> <p>Vegetation Dominance Change</p> <p>Map Number 4.7b</p> <p>1:20,000</p> <p>0 125 250 500 Meters</p>	<p>⊠ Gates</p> <p>— Fences</p> <p>— Roads</p> <p>— River</p> <p>— ACT Border</p> <p>■ Namadgi NP</p>	<p>Contours</p> <p>— 10m intervals</p> <p>— 50m intervals</p>	<p>Vegetation Dominance Change</p> <p>■ Burgan Derived Tbl Shrubland</p> <p>■ Silver Wattle Shrubland</p> <p>■ Exotics</p> <p>□ Native; No Change</p>		<p>Contact Details Date: 23rd July 2009</p> <p>ACT Government Conservation, Planning and Research Gungahlin Homestead, Barton Highway, PO Box 158 Canberra ACT 2601 Telephone: 13 22 81</p> <p>Disclaimer: ACT Government does not warrant that the data is free from errors. Data Copyright: © Australian Capital Territory, Canberra 2009</p>



Appendix 4
Gudgenby River
Vegetation
Dominance Change
 Map Number 4.8b
 1:20,000
 0 125 250 500
 Meters

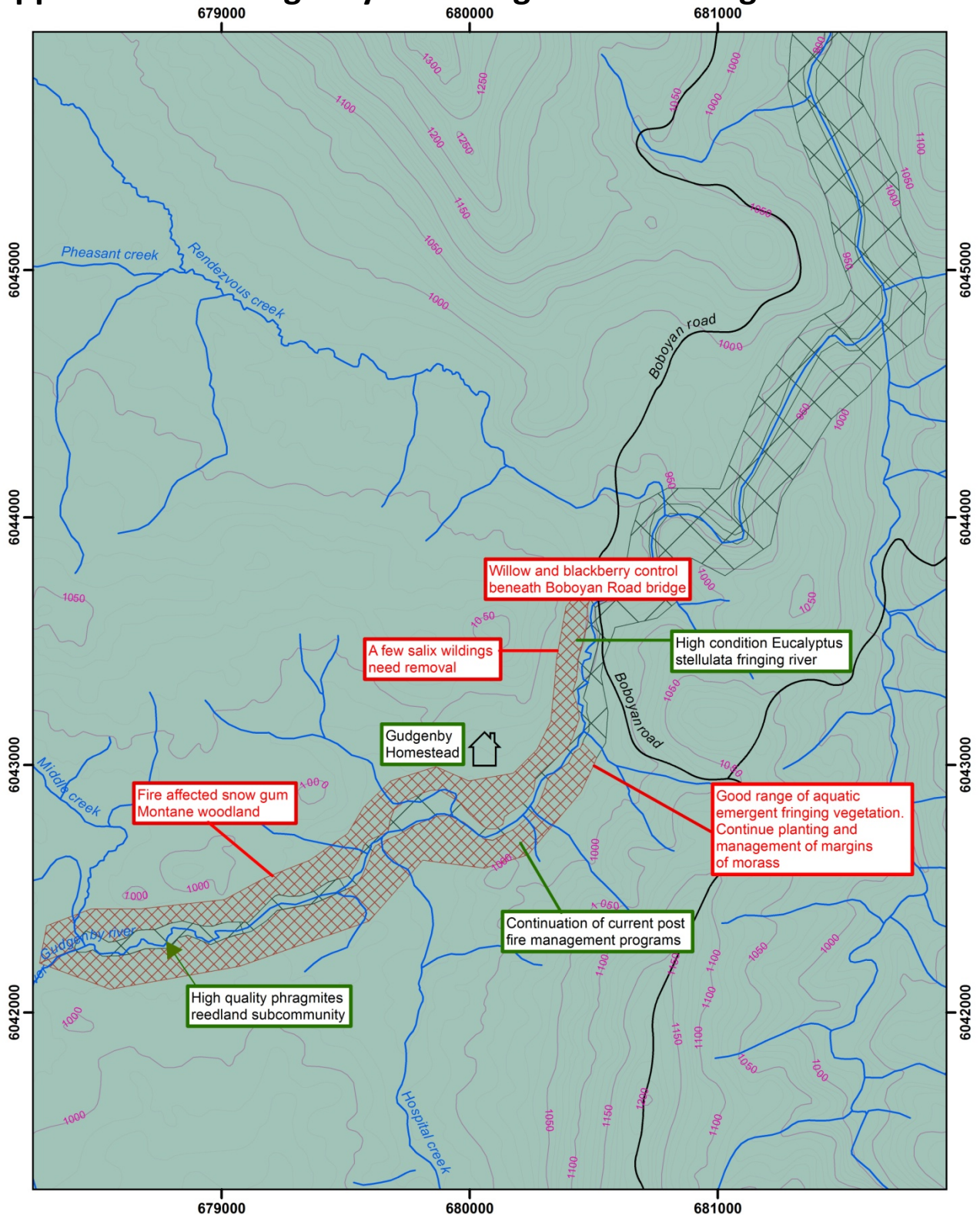
- ⊠ Gates
- Fences
- Roads
- River
- ACT Border
- Namadgi NP

- Contours**
- 10m intervals
 - 50m intervals
- Vegetation Dominance Change**
- Burgan Derived Tbl Shrubland
 - Silver Wattle Shrubland
 - Exotics
 - Native; No Change

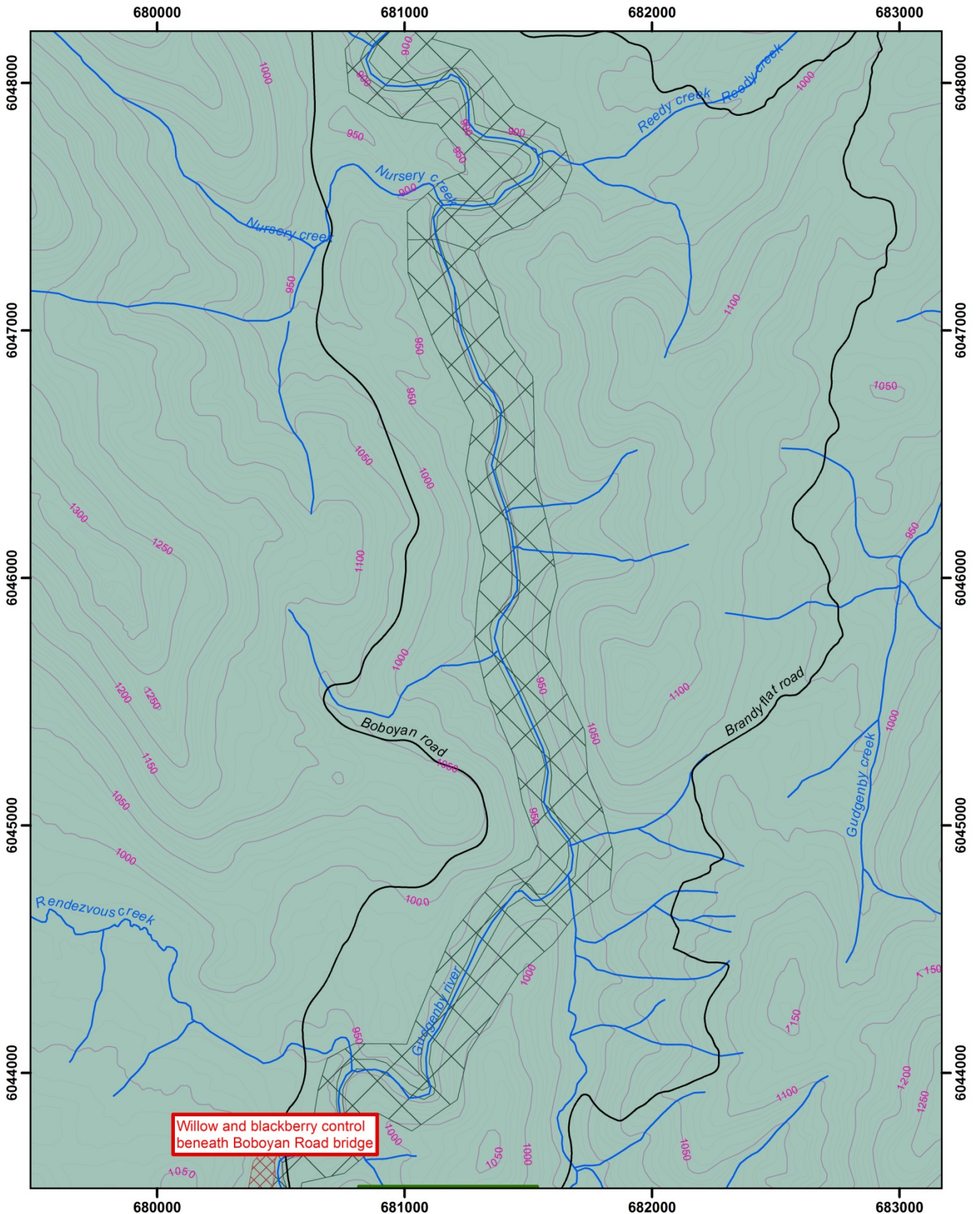



Contact Details Date: 23rd July 2009
 ACT Government
 Conservation, Planning and Research
 Gudgenby Homestead,
 Barton Highway,
 PO Box 158 Canberra ACT 2601
 Telephone 13 22 81
 Disclaimer: ACT Government does
 not warrant that the data is free from errors.
 Data Copyright: © Australian Capital Territory,
 Canberra 2009

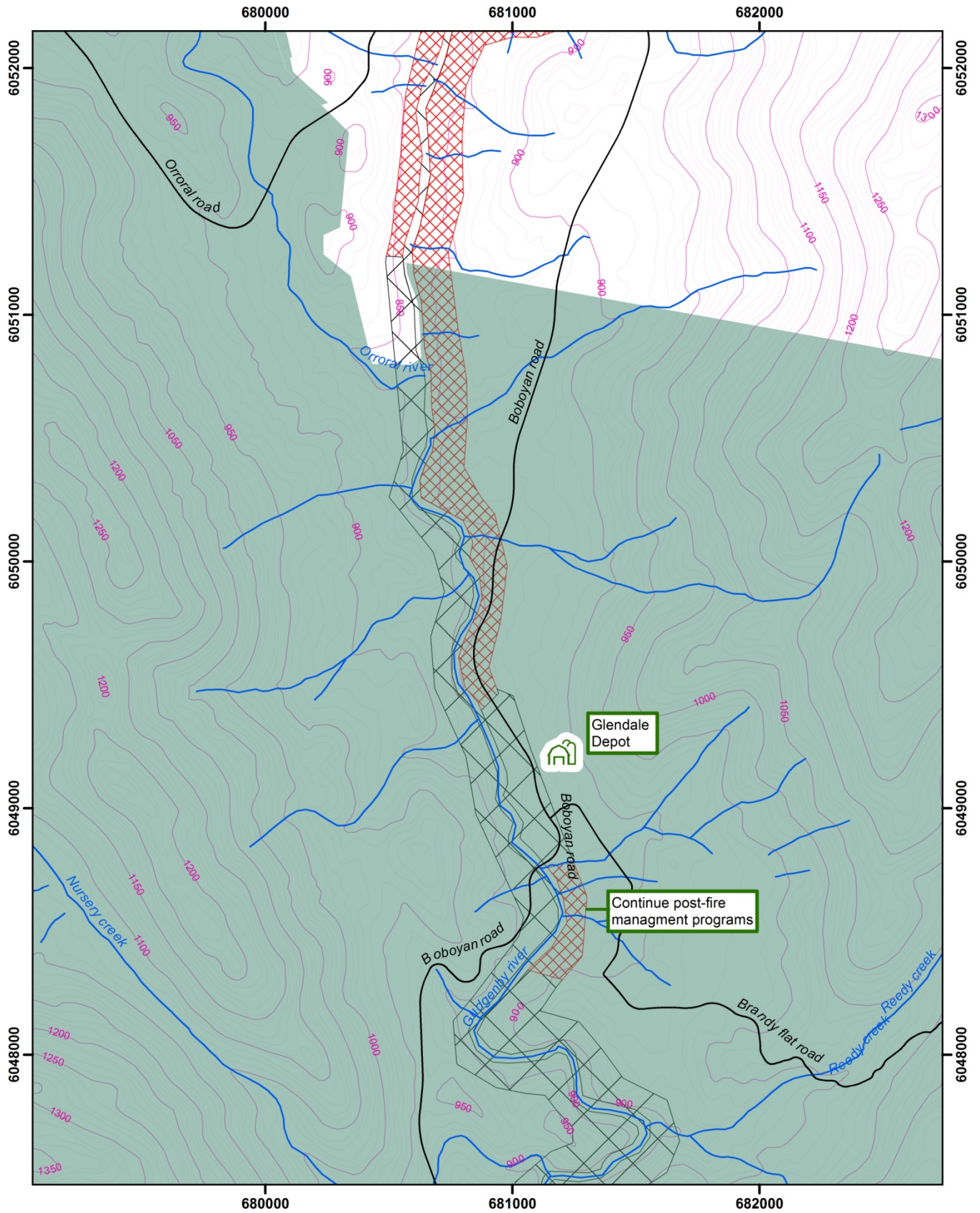
Appendix 4C – Gudgenby River Vegetation Management



<p>Appendix 4 Gudgenby River Vegetation Management Priority Sites</p> <p>Map Number 4.1c</p> <p>1:20,000</p> <p>0 125 250 500 Meters</p>	<p>⊠ Gates</p> <p>— Fences</p> <p>— Roads</p> <p>— River</p> <p>— ACT Border</p> <p>■ Namadgi NP</p>	<p>Contours</p> <p>— 10m intervals</p> <p>— 50m intervals</p>	<p>Vegetation Management</p> <p>□ No action required</p> <p>⊠ High Priority</p> <p>■ Very High Priority</p>		<p><small>Contact Details Date: 4th August, 2009</small> ACT Government Conservation, Research and Planning Gungahlin Homestead, Barton Highway, PO Box 158 Canberra ACT 2601 Telephone: 13 22 81 Disclaimer: ACT Government does not warrant that the data is free from errors. Data Copyright © Australian Capital Territory, Canberra 2009</p>



<p>Appendix 4 Gudgenby River Vegetation Management Priority Sites Map Number 4.2c 1:20,000</p> <p>0 125 250 500 Meters</p> <p>N</p>	<ul style="list-style-type: none"> Gates Fences Roads River ACT Border Namadgi NP 	<p>Contours</p> <ul style="list-style-type: none"> 10m intervals 50m intervals 	<p>Vegetation Management</p> <ul style="list-style-type: none"> No action required High Priority Very High Priority 		<p>Contact Details Date: 4th August, 2009 ACT Government Conservation, Research and Planning Gungahlin Homestead, Barton Highway, PO Box 158 Canberra ACT 2601 Telephone: 13 22 81 Disclaimer: ACT Government does not warrant that the data is free from errors. Data Copyright: © Australian Capital Territory, Canberra 2009.</p>
---	---	---	--	--	--

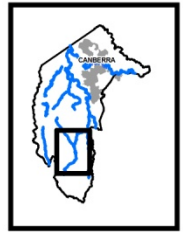



Appendix 4
Gudgenby River
Vegetation Management
Priority Sites
 Map Number 4.3c
 1:20,000
 0 125 250 500
 Meters

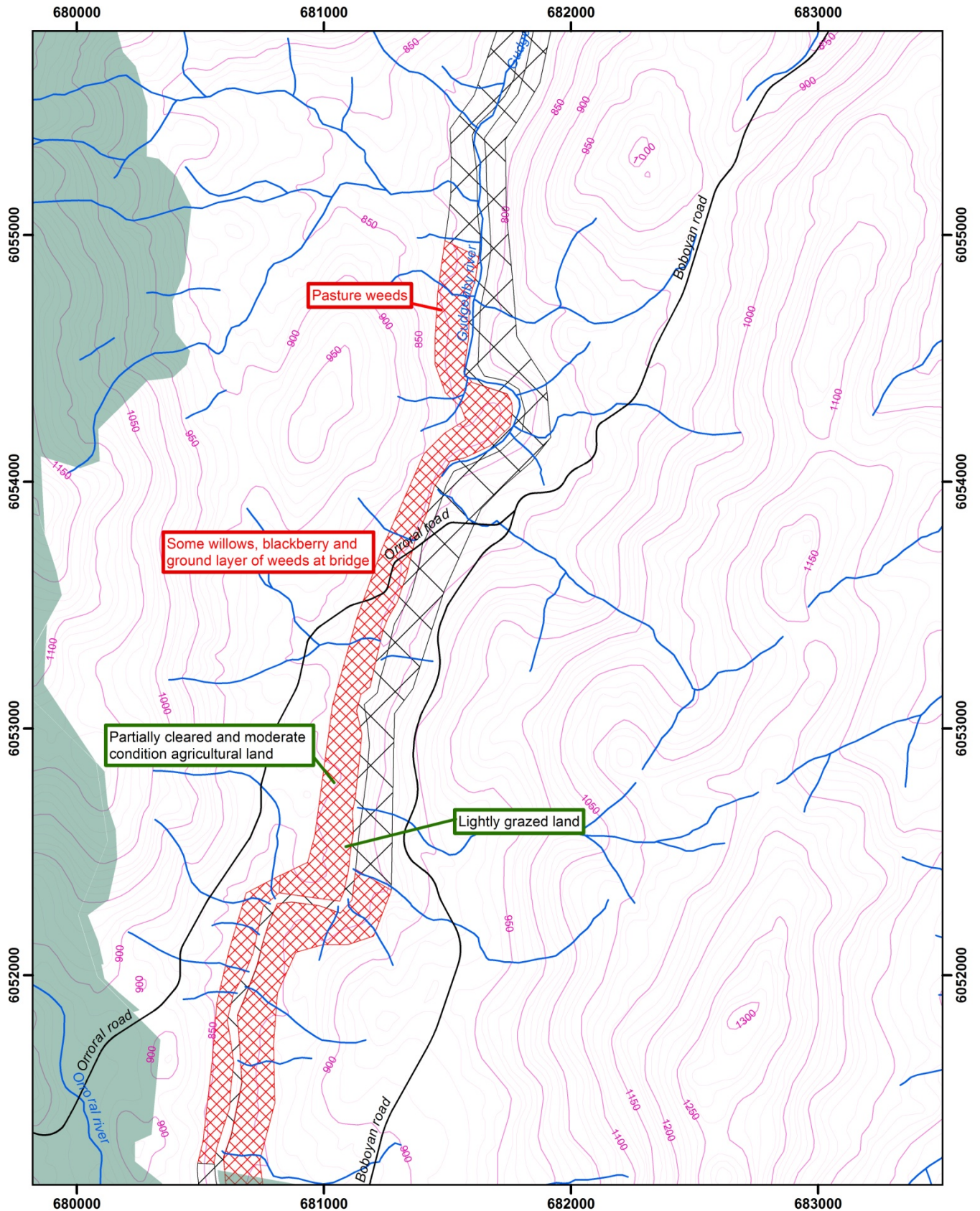
- Gates
- Fences
- Roads
- River
- ACT Border
- Namadgi NP

- Contours**
- 10m intervals
 - 50m intervals

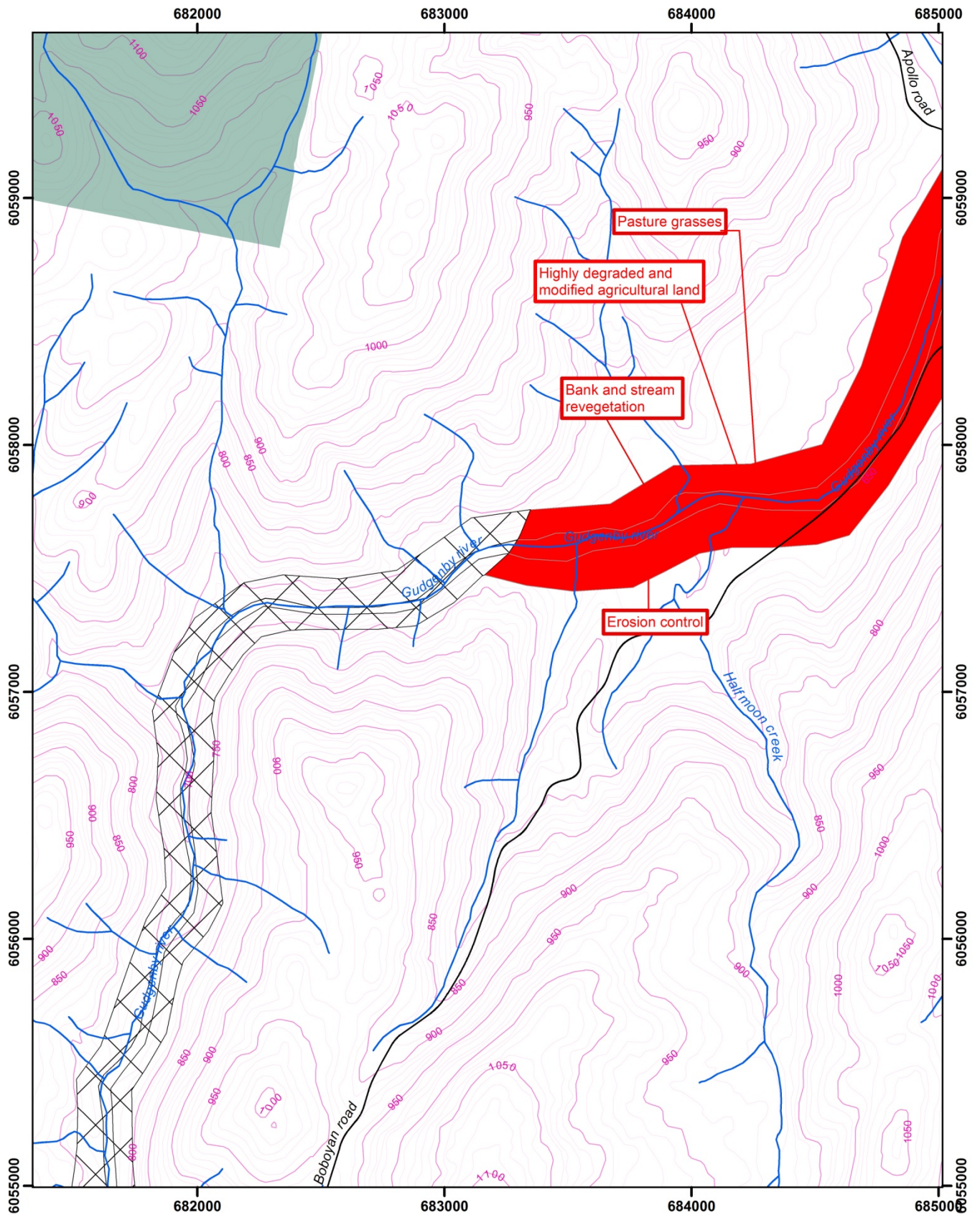
- Vegetation Management**
- No action required
 - High Priority
 - Very High Priority



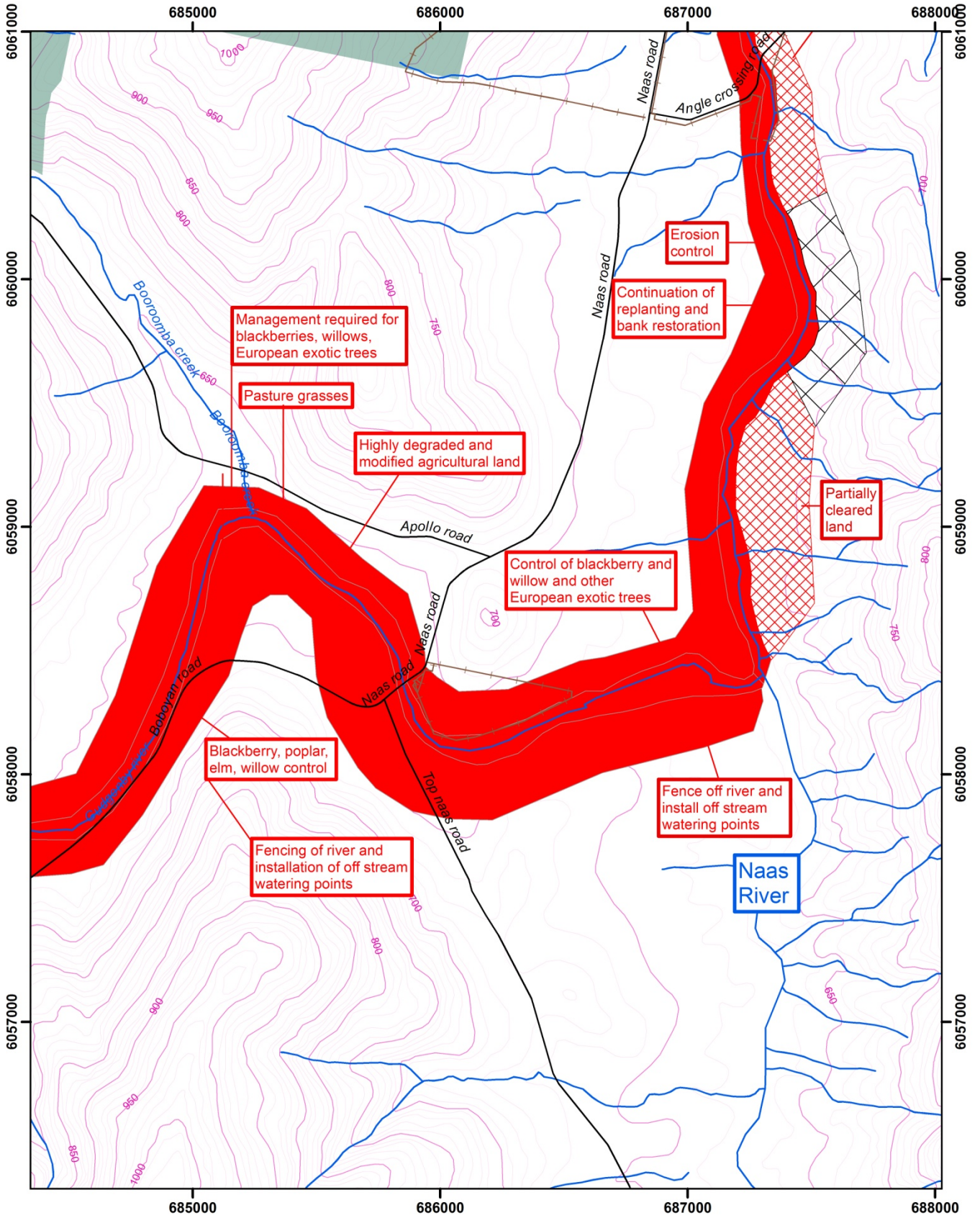

 Contact Details Date: 4th August, 2009
 ACT Government
 Conservation, Research and Planning
 Gungahlin Homestead,
 Barton Highway,
 P.O. Box 158 Canberra ACT 2601
 Telephone: 13 22 81
 Disclaimer: ACT Government does
 not warrant that the data is free from errors.
 Data Copyright: © Australian Capital Territory,
 Canberra 2009



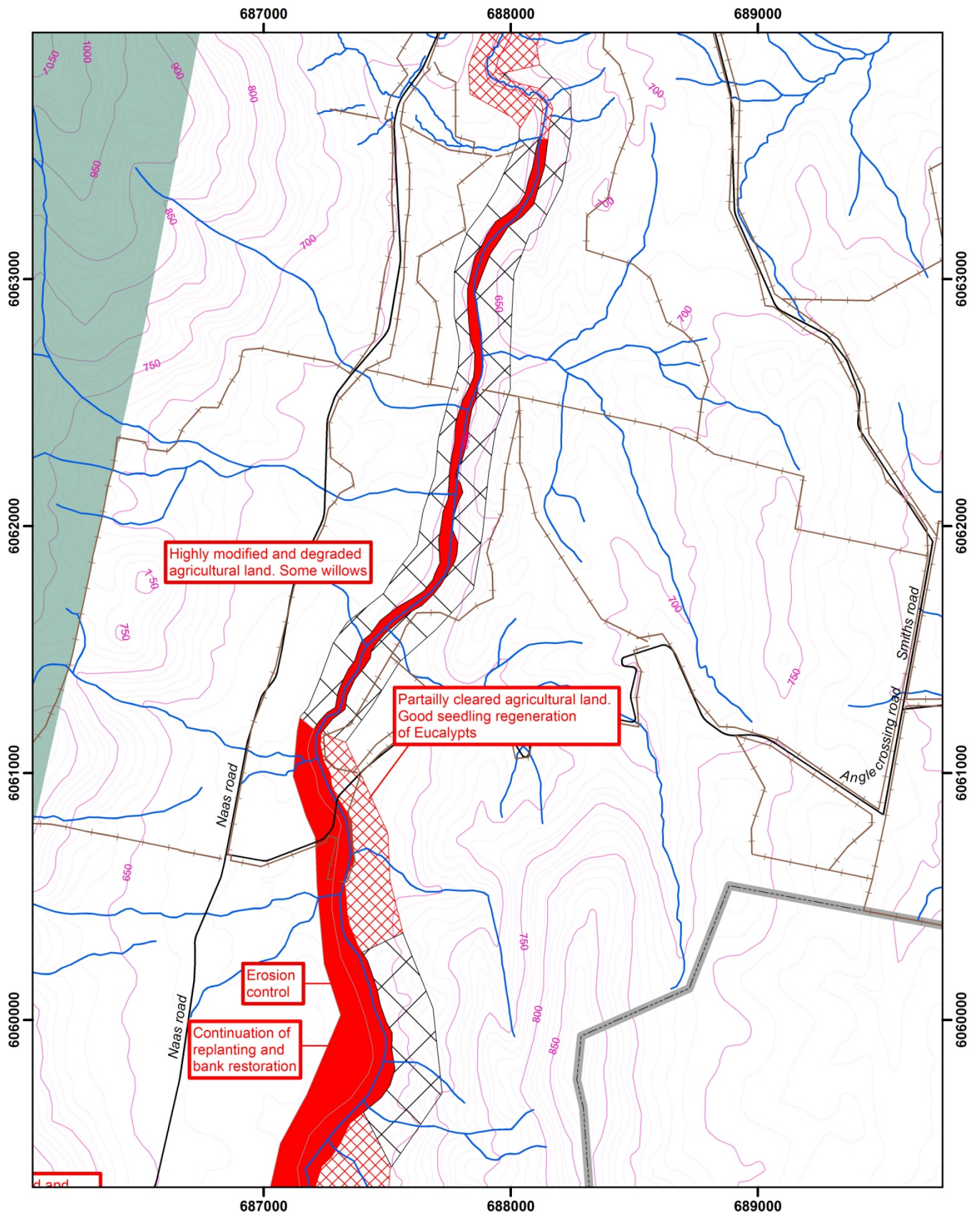
<p>Appendix 4 Gudgenby River Vegetation Management Priority Sites Map Number 4.4c 1:20,000</p> <p>0 125 250 500 Meters</p>		<p> Gates Fences Roads River ACT Border Namadgi NP </p>	<p>Contours</p> <p> 10m intervals 50m intervals </p>	<p>Vegetation Management</p> <p> No action required High Priority Very High Priority </p>		<p> <small>Contact Details Date: 4th August, 2009</small> ACT Government Conservation, Research and Planning Gungahlin Homestead, Barton Highway, P.O. Box 158 Canberra ACT 2601 Telephone: 13 22 81 Disclaimer: ACT Government does not warrant that the data is free from errors. Date Copyright: © Australian Capital Territory, Canberra 2009 </p>
--	--	--	--	---	--	---



<p>Appendix 4 Gudgenby River Vegetation Management Priority Sites Map Number 4.5c 1:20,000</p> <p>0 125 250 500 Meters</p>		<p>⊠ Gates</p> <p>— Fences</p> <p>— Roads</p> <p>— River</p> <p>--- ACT Border</p> <p>■ Namadgi NP</p>	<p>Contours</p> <p>— 10m intervals</p> <p>— 50m intervals</p>	<p>Vegetation Management</p> <p>⊠ No action required</p> <p>⊠ High Priority</p> <p>■ Very High Priority</p>		<p>Contact Details Date: 4th August 2009 ACT Government Conservation, Research and Planning Gungahlin Homestead, Barton Highway, PO Box 158 Canberra ACT 2601 Telephone: 13 22 81 Disclaimer: ACT Government does not warrant that the data is free from errors. Data Copyright: © Australian Capital Territory, Canberra 2009.</p>
--	--	--	--	--	--	---



<p>Appendix 4 Gudgenby River Vegetation Management Priority Sites</p> <p>Map Number 4.6c 1:20,000</p> <p>0 125 250 500 Meters</p>	<p>⊠ Gates</p> <p>— Fences</p> <p>— Roads</p> <p>— River</p> <p>— ACT Border</p> <p>■ Namadgi NP</p>	<p>Contours</p> <p>— 10m intervals</p> <p>— 50m intervals</p>	<p>Vegetation Management</p> <p>□ No action required</p> <p>▨ High Priority</p> <p>■ Very High Priority</p>		<p>Contact Details Date: 4th August, 2009 ACT Government Conservation, Research and Planning Gungahlin Homestead, Barton Highway, PO Box 158 Canberra ACT 2601 Telephone: 13 22 81 Disclaimer: ACT Government does not warrant that the data is free from errors. Data Copyright: © Australian Capital Territory, Canberra 2009.</p>



<p>Appendix 4 Gudgenby River Vegetation Management Priority Sites Map Number 4.7c 1:20,000</p> <p>0 125 250 500 Meters</p>		<p>⊠ Gates</p> <p>— Fences</p> <p>— Roads</p> <p>— River</p> <p>— ACT Border</p> <p>■ Namadgi NP</p>	<p>Contours</p> <p>— 10m intervals</p> <p>— 50m intervals</p>	<p>Vegetation Management</p> <p>□ No action required</p> <p>▨ High Priority</p> <p>■ Very High Priority</p>		<p>Contact Details Date: 4th August 2009 ACT Government Conservation, Research and Planning Gungahlin Homestead, Barton Highway, PO Box 158 Canberra ACT 2601 Telephone: 13 22 61 Disclaimer: ACT Government does not warrant that the data is free from errors. Data Copyright: © Australian Capital Territory, Canberra 2009.</p>
--	--	--	--	--	--	---