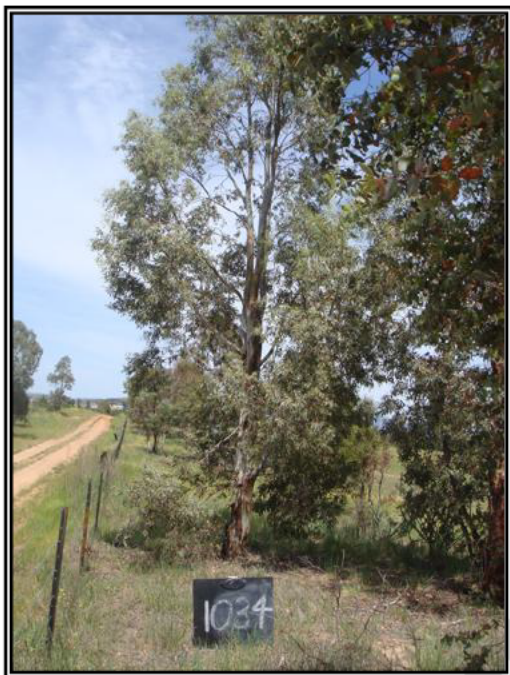


MOLONGLO / COOMBS & WRIGHT TREE ASSESSMENT

Tree N^o: 1034



Regulated Tree:	N
Classification of Tree Quality:	
• Arboricultural Assessment	M
• Contribution to Urban Amenity	M
Recommendation:	Retain
Location	

Survey Details:

Organisation:	dsb Landscape Architects	Grid Co-ordinates:	E 202746.942	N 600014.980
Date of Survey:	4 th November 2009	Assessor ID:	JL & ST	

Tree Details:

Species:	Eucalyptus rubida			Common Name:	Candle bark		
Height:	10	Canopy spread:	7	Trunk Circum:	900	N ^o of Trunks	1
Health/Condition:	Relative density of foliage						M
	Amount of dead wood in canopy						H
	Prevalence of insect attack or disease						H
	Prevalence of epicormic growth						H
	Prevalence of mistletoe						H
Overall health/condition of the tree						G	
Age:	A	Age/Health/Condition:	A/G	Form:	T	Hazard Potential:	L
Habitat Value:	N			Tolerance to Disturbance:	M		

Contribution to Future Urban Amenity:

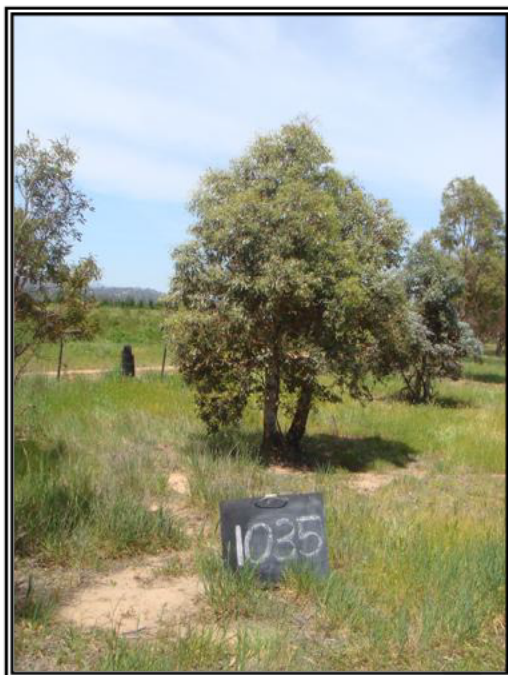
Scenic:	M	Rareness or Commonness:	M	Habitat quality:	M	Cultural, Social, Scientific:	L
Contribution to Immediate Landscaping:	H		Comment:	Prominent tree.			
Economic justification for retention or removal:							
Ameliorative work to reduce Risk:	Y		Is work cost effective?:	Y			
Landscape Groups:			Comment:				

Tree Protection and Management:

Tree Protection Zone & Conditions:	M	b, c & d always apply
Arboricultural Notes:	Remove small lower branches, complex union at 4 metres.	

MOLONGLO / COOMBS & WRIGHT TREE ASSESSMENT

Tree N°: 1035



Regulated Tree:	N
Classification of Tree Quality:	
• Arboricultural Assessment	P
• Contribution to Urban Amenity	P
Recommendation:	Remove
Location	

Survey Details:

Organisation:	dsb Landscape Architects	Grid Co-ordinates:	E 202739.832	N 600009.796
Date of Survey:	4 th November 2009	Assessor ID:	JL & ST	

Tree Details:

Species:	Eucalyptus rubida			Common Name:	Candle bark		
Height:	4	Canopy spread:	5	Trunk Circum:	900	N° of Trunks	2
Health/Condition:	Relative density of foliage						M
	Amount of dead wood in canopy						M
	Prevalence of insect attack or disease						H
	Prevalence of epicormic growth						H
	Prevalence of mistletoe						H
Overall health/condition of the tree						F	
Age:	A	Age/Health/Condition:	A/F	Form:	S	Hazard Potential:	M
Habitat Value:	N			Tolerance to Disturbance:	M		

Contribution to Future Urban Amenity:

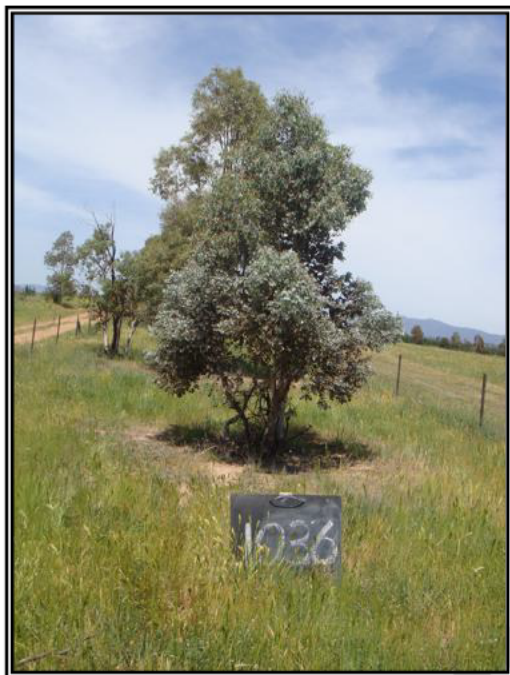
Scenic:	L	Rareness or Commonness:	M	Habitat quality:	M	Cultural, Social, Scientific:	L
Contribution to Immediate Landscaping:	L		Comment:				
Economic justification for retention or removal:							
Ameliorative work to reduce Risk:	Y		Is work cost effective?:	N			
Landscape Groups:			Comment:				

Tree Protection and Management:

Tree Protection Zone & Conditions:	M	b, c & d always apply
Arboricultural Notes:	Removing trunks will damage tree.	

MOLONGLO / COOMBS & WRIGHT TREE ASSESSMENT

Tree N°: 1036



Regulated Tree:	N
Classification of Tree Quality:	
• Arboricultural Assessment	P
• Contribution to Urban Amenity	P
Recommendation:	Remove
Location	

Survey Details:

Organisation:	dsb Landscape Architects	Grid Co-ordinates:	E 202732.971	N 600000.781
Date of Survey:	4 th November 2009	Assessor ID:	JL & ST	

Tree Details:

Species:	Eucalyptus rubida			Common Name:	Candle bark		
Height:	4	Canopy spread:	5	Trunk Circum:	900	N° of Trunks	3
Health/Condition:	Relative density of foliage						M
	Amount of dead wood in canopy						M
	Prevalence of insect attack or disease						H
	Prevalence of epicormic growth						M
	Prevalence of mistletoe						H
Overall health/condition of the tree						P	
Age:	A	Age/Health/Condition:	A/P	Form:	S	Hazard Potential:	L
Habitat Value:	N			Tolerance to Disturbance:	M		

Contribution to Future Urban Amenity:

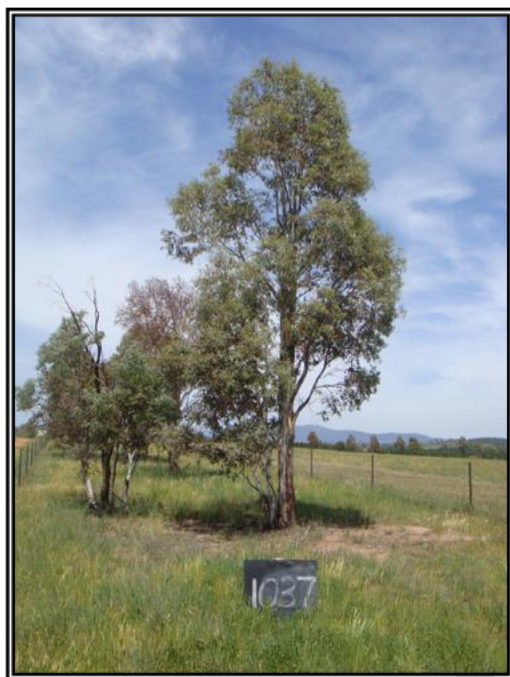
Scenic:	L	Rareness or Commonness:	M	Habitat quality:	M	Cultural, Social, Scientific:	L	
Contribution to Immediate Landscaping:		L	Comment: Coppice only.					
Economic justification for retention or removal:								
Ameliorative work to reduce Risk:			Y	Is work cost effective?:				N
Landscape Groups:		Comment:						

Tree Protection and Management:

Tree Protection Zone & Conditions:	M	b, c & d always apply					
Arboricultural Notes:							

MOLONGLO / COOMBS & WRIGHT TREE ASSESSMENT

Tree N°: 1037



Regulated Tree:	Y
Classification of Tree Quality:	
• Arboricultural Assessment	P
• Contribution to Urban Amenity	P
Recommendation:	Remove
Location	

Survey Details:

Organisation:	dsb Landscape Architects	Grid Co-ordinates:	E 202727.691	N 599990.947
Date of Survey:	4 th November 2009	Assessor ID:	JL & ST	

Tree Details:

Species:	Eucalyptus rubida			Common Name:	Candle bark		
Height:	8	Canopy spread:	5	Trunk Circum:	1900	N° of Trunks	5
Health/Condition:	Relative density of foliage						M
	Amount of dead wood in canopy						H
	Prevalence of insect attack or disease						H
	Prevalence of epicormic growth						H
	Prevalence of mistletoe						H
Overall health/condition of the tree						F	
Age:	A	Age/Health/Condition:	A/F	Form:	U	Hazard Potential:	M
Habitat Value:	N			Tolerance to Disturbance:	M		

Contribution to Future Urban Amenity:

Scenic:	L	Rareness or Commonness:	M	Habitat quality:	M	Cultural, Social, Scientific:	L
Contribution to Immediate Landscaping:		L	Comment:				
Economic justification for retention or removal:							
Ameliorative work to reduce Risk:			Y	Is work cost effective?:			N
Landscape Groups:		Comment:					

Tree Protection and Management:

Tree Protection Zone & Conditions:	M	b, c & d always apply
Arboricultural Notes:	Removing trunks will damage tree.	

MOLONGLO / COOMBS & WRIGHT TREE ASSESSMENT

Tree N^o: 1038



Regulated Tree:	N
Classification of Tree Quality:	
• Arboricultural Assessment	P
• Contribution to Urban Amenity	P
Recommendation:	Remove
Location	

Survey Details:

Organisation:	dsb Landscape Architects	Grid Co-ordinates:	E 202728.648	N 599986.740
Date of Survey:	4 th November 2009	Assessor ID:	JL & ST	

Tree Details:

Species:	Eucalyptus rubida			Common Name:	Candle bark		
Height:	5	Canopy spread:	4	Trunk Circum:	900	N ^o of Trunks	3
Health/Condition:	Relative density of foliage						L
	Amount of dead wood in canopy						L
	Prevalence of insect attack or disease						M
	Prevalence of epicormic growth						M
	Prevalence of mistletoe						H
Overall health/condition of the tree						P	
Age:	A	Age/Health/Condition:	A/P	Form:	S	Hazard Potential:	L
Habitat Value:	N			Tolerance to Disturbance:	M		

Contribution to Future Urban Amenity:

Scenic:	L	Rareness or Commonness:	M	Habitat quality:	M	Cultural, Social, Scientific:	L
Contribution to Immediate Landscaping:	L		Comment:	Dead main trunk.			
Economic justification for retention or removal:							
Ameliorative work to reduce Risk:	Y		Is work cost effective?:	N			
Landscape Groups:			Comment:				

Tree Protection and Management:

Tree Protection Zone & Conditions:	M	b, c & d always apply
Arboricultural Notes:		

MOLONGLO / COOMBS & WRIGHT TREE ASSESSMENT

Tree N°: 1039



Regulated Tree:	N
Classification of Tree Quality:	
• Arboricultural Assessment	M
• Contribution to Urban Amenity	M
Recommendation:	Retain
Location	

Survey Details:

Organisation:	dsb Landscape Architects	Grid Co-ordinates:	E 202713.248	N 599971.090
Date of Survey:	4 th November 2009	Assessor ID:	JL & ST	

Tree Details:

Species:	Eucalyptus rubida			Common Name:	Candle bark		
Height:	6	Canopy spread:	5	Trunk Circum:	800	N° of Trunks	1
Health/Condition:	Relative density of foliage						M
	Amount of dead wood in canopy						H
	Prevalence of insect attack or disease						H
	Prevalence of epicormic growth						H
	Prevalence of mistletoe						H
	Overall health/condition of the tree						G
Age:	A	Age/Health/Condition:	A/G	Form:	T	Hazard Potential:	L
Habitat Value:	N			Tolerance to Disturbance:	M		

Contribution to Future Urban Amenity:

Scenic:	M	Rareness or Commonness:	M	Habitat quality:	M	Cultural, Social, Scientific:	L
Contribution to Immediate Landscaping:	M		Comment:	Good young tree.			
Economic justification for retention or removal:							
Ameliorative work to reduce Risk:	N		Is work cost effective?:				
Landscape Groups:		Comment:					

Tree Protection and Management:

Tree Protection Zone & Conditions:	M	b, c & d always apply
Arboricultural Notes:		

MOLONGLO / COOMBS & WRIGHT TREE ASSESSMENT

Tree N°: 1040



Regulated Tree:	N
Classification of Tree Quality:	
• Arboricultural Assessment	P
• Contribution to Urban Amenity	P
Recommendation:	Remove
Location	

Survey Details:

Organisation:	dsb Landscape Architects	Grid Co-ordinates:	E 202711.258	N 599966.412
Date of Survey:	4 th November 2009	Assessor ID:	JL & ST	

Tree Details:

Species:	Eucalyptus bicostata			Common Name:	Blue gum		
Height:	6	Canopy spread:	4	Trunk Circum:	600	N° of Trunks	1
Health/Condition:	Relative density of foliage						M
	Amount of dead wood in canopy						M
	Prevalence of insect attack or disease						M
	Prevalence of epicormic growth						M
	Prevalence of mistletoe						H
Overall health/condition of the tree						P	
Age:	A	Age/Health/Condition:	A/P	Form:	S	Hazard Potential:	M
Habitat Value:	N			Tolerance to Disturbance:	M		

Contribution to Future Urban Amenity:

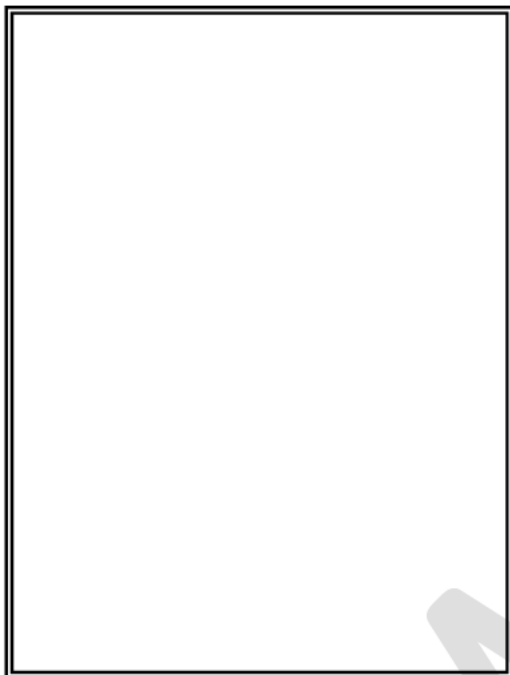
Scenic:	L	Rareness or Commonness:	M	Habitat quality:	M	Cultural, Social, Scientific:	L
Contribution to Immediate Landscaping:	L		Comment:	Unsuitable species.			
Economic justification for retention or removal:							
Ameliorative work to reduce Risk:	Y			Is work cost effective?:	N		
Landscape Groups:	Comment:						

Tree Protection and Management:

Tree Protection Zone & Conditions:	M	b, c & d always apply
Arboricultural Notes:		

MOLONGLO / COOMBS & WRIGHT TREE ASSESSMENT

Tree N°: 1064



Regulated Tree:	N
Classification of Tree Quality:	
• Arboricultural Assessment	P
• Contribution to Urban Amenity	P
Recommendation:	Remove
Location	

Survey Details:

Organisation:	dsb Landscape Architects	Grid Co-ordinates:	E 203111.092	N 600567.915
Date of Survey:	4 th November 2009	Assessor ID:	JL & ST	

Tree Details:

Species:	Eucalyptus bicostata			Common Name:	Blue gum		
Height:	9	Canopy spread:	4	Trunk Circum:	800	N° of Trunks	1
Health/Condition:	Relative density of foliage						L
	Amount of dead wood in canopy						M
	Prevalence of insect attack or disease						M
	Prevalence of epicormic growth						M
	Prevalence of mistletoe						H
Overall health/condition of the tree						P	
Age:	A	Age/Health/Condition:	A/P	Form:	S	Hazard Potential:	L
Habitat Value:	N			Tolerance to Disturbance:	M		

Contribution to Future Urban Amenity:

Scenic:	L	Rareness or Commonness:	M	Habitat quality:	M	Cultural, Social, Scientific:	L
Contribution to Immediate Landscaping:		L	Comment: Unsuitable species.				
Economic justification for retention or removal:							
Ameliorative work to reduce Risk:			N	Is work cost effective?:			
Landscape Groups:		Comment:					

Tree Protection and Management:

Tree Protection Zone & Conditions:	b, c & d always apply						
Arboricultural Notes:	Poor condition.						

MOLONGLO / COOMBS & WRIGHT TREE ASSESSMENT

Tree N°:	1065
----------	------



Regulated Tree:	N
Classification of Tree Quality:	
• Arboricultural Assessment	
• Contribution to Urban Amenity	
Recommendation:	Remove
Location	

Survey Details:

Organisation:	dsb Landscape Architects	Grid Co-ordinates:	E 203107.471	N 600571.203
Date of Survey:	4 th November 2009	Assessor ID:	JL & ST	

Tree Details:

Species:				Common Name:			
Height:		Canopy spread:		Trunk Circum:		N° of Trunks	
Health/Condition:	Relative density of foliage						
	Amount of dead wood in canopy						
	Prevalence of insect attack or disease						
	Prevalence of epicormic growth						
	Prevalence of mistletoe						
Overall health/condition of the tree							
Age:		Age/Health/Condition:		Form:		Hazard Potential:	
Habitat Value:				Tolerance to Disturbance:			

Contribution to Future Urban Amenity:

Scenic:		Rareness or Commonness:		Habitat quality:		Cultural, Social, Scientific:	
Contribution to Immediate Landscaping:			Comment:		Dead.		
Economic justification for retention or removal:							
Ameliorative work to reduce Risk:					Is work cost effective?:		
Landscape Groups:		Comment:					

Tree Protection and Management:

Tree Protection Zone & Conditions:				b, c & d always apply
Arboricultural Notes:				

MOLONGLO / COOMBS & WRIGHT TREE ASSESSMENT

Tree N°: 1066



Regulated Tree:	N
Classification of Tree Quality:	
• Arboricultural Assessment	P
• Contribution to Urban Amenity	P
Recommendation:	Remove
Location	

Survey Details:

Organisation:	dsb Landscape Architects	Grid Co-ordinates:	E 203096.042	N 600554.616
Date of Survey:	4 th November 2009	Assessor ID:	JL & ST	

Tree Details:

Species:	Eucalyptus elata			Common Name:	River peppermint		
Height:	9	Canopy spread:	5	Trunk Circum:	1300	N° of Trunks	1
Health/Condition:	Relative density of foliage						M
	Amount of dead wood in canopy						M
	Prevalence of insect attack or disease						M
	Prevalence of epicormic growth						M
	Prevalence of mistletoe						H
Overall health/condition of the tree						P	
Age:	A	Age/Health/Condition:	A/P	Form:	S	Hazard Potential:	M
Habitat Value:	N			Tolerance to Disturbance:	M		

Contribution to Future Urban Amenity:

Scenic:	L	Rareness or Commonness:	M	Habitat quality:	M	Cultural, Social, Scientific:	L
Contribution to Immediate Landscaping:		L	Comment:				
Economic justification for retention or removal:							
Ameliorative work to reduce Risk:			N	Is work cost effective?:			
Landscape Groups:		Comment:					

Tree Protection and Management:

Tree Protection Zone & Conditions:	b, c & d always apply						
Arboricultural Notes:	Poor form.						

MOLONGLO / COOMBS & WRIGHT TREE ASSESSMENT

Tree N°:	1067
----------	------



Regulated Tree:	N
Classification of Tree Quality:	
• Arboricultural Assessment	P
• Contribution to Urban Amenity	P
Recommendation:	Remove
Location	

Survey Details:

Organisation:	dsb Landscape Architects	Grid Co-ordinates:	E 203094.703	N 600542.571
Date of Survey:	4 th November 2009	Assessor ID:	JL & ST	

Tree Details:

Species:	Eucalyptus elata			Common Name:	River peppermint		
Height:	7.5	Canopy spread:	6	Trunk Circum:	1100	N° of Trunks	1
Health/Condition:	Relative density of foliage						M
	Amount of dead wood in canopy						M
	Prevalence of insect attack or disease						M
	Prevalence of epicormic growth						H
	Prevalence of mistletoe						H
Overall health/condition of the tree						P	
Age:	A	Age/Health/Condition:	A/P	Form:	U	Hazard Potential:	L
Habitat Value:	N			Tolerance to Disturbance:	M		

Contribution to Future Urban Amenity:

Scenic:	L	Rareness or Commonness:	M	Habitat quality:	M	Cultural, Social, Scientific:	L
Contribution to Immediate Landscaping:	L		Comment:	Stunted and poor form.			
Economic justification for retention or removal:							
Ameliorative work to reduce Risk:	N			Is work cost effective?:			
Landscape Groups:		Comment:					

Tree Protection and Management:

Tree Protection Zone & Conditions:	M	b, c & d always apply
Arboricultural Notes:		

MOLONGLO / COOMBS & WRIGHT TREE ASSESSMENT

Tree N°: 1068



Regulated Tree:	N
Classification of Tree Quality:	
• Arboricultural Assessment	P
• Contribution to Urban Amenity	P
Recommendation:	Remove
Location	

Survey Details:

Organisation:	dsb Landscape Architects	Grid Co-ordinates:	E 203091.518	600537.996
Date of Survey:	4 th November 2009	Assessor ID:	JL & ST	

Tree Details:

Species:	Eucalyptus viminalis			Common Name:	Ribbon gum		
Height:	7	Canopy spread:	4	Trunk Circum:	800	N° of Trunks	1
Health/Condition:	Relative density of foliage						M
	Amount of dead wood in canopy						H
	Prevalence of insect attack or disease						M
	Prevalence of epicormic growth						M
	Prevalence of mistletoe						H
Overall health/condition of the tree						P	
Age:	A	Age/Health/Condition:	A/P	Form:	U	Hazard Potential:	M
Habitat Value:	N			Tolerance to Disturbance:	M		

Contribution to Future Urban Amenity:

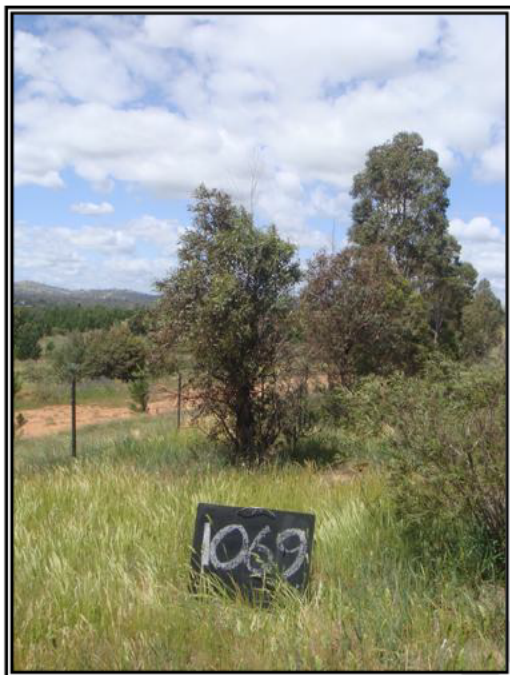
Scenic:	L	Rareness or Commonness:	M	Habitat quality:	M	Cultural, Social, Scientific:	L
Contribution to Immediate Landscaping:		L	Comment:				
Economic justification for retention or removal:							
Ameliorative work to reduce Risk:			N	Is work cost effective?:			
Landscape Groups:		Comment:					

Tree Protection and Management:

Tree Protection Zone & Conditions:	M	b, c & d always apply
Arboricultural Notes:	Poor form, potential poor union at 3 metres.	

MOLONGLO / COOMBS & WRIGHT TREE ASSESSMENT

Tree N°: 1069



Regulated Tree:	N
Classification of Tree Quality:	
• Arboricultural Assessment	P
• Contribution to Urban Amenity	P
Recommendation:	Remove
Location	

Survey Details:

Organisation:	dsb Landscape Architects	Grid Co-ordinates:	E 203085.063	N 600527.618
Date of Survey:	4 th November 2009	Assessor ID:	JL & ST	

Tree Details:

Species:	Eucalyptus elata			Common Name:	River peppermint		
Height:	3.5	Canopy spread:	2	Trunk Circum:	500	N° of Trunks	1
Health/Condition:	Relative density of foliage						L
	Amount of dead wood in canopy						L
	Prevalence of insect attack or disease						L
	Prevalence of epicormic growth						L
	Prevalence of mistletoe						H
Overall health/condition of the tree						P	
Age:	A	Age/Health/Condition:	A/P	Form:	S	Hazard Potential:	L
Habitat Value:	N			Tolerance to Disturbance:	M		

Contribution to Future Urban Amenity:

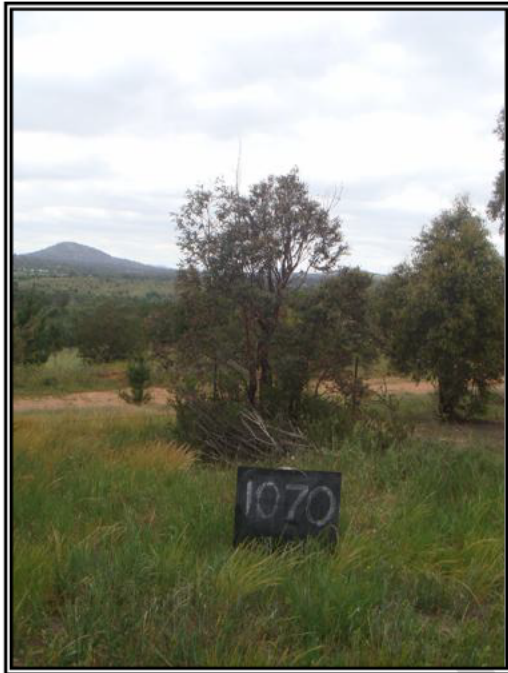
Scenic:	L	Rareness or Commonness:	M	Habitat quality:	M	Cultural, Social, Scientific:	L
Contribution to Immediate Landscaping:		L	Comment: Small stunted and dying.				
Economic justification for retention or removal:							
Ameliorative work to reduce Risk:			N	Is work cost effective?:			
Landscape Groups:		Comment:					

Tree Protection and Management:

Tree Protection Zone & Conditions:	M	b, c & d always apply
Arboricultural Notes:		

MOLONGLO / COOMBS & WRIGHT TREE ASSESSMENT

Tree N°:	1070
----------	------



Regulated Tree:	N
Classification of Tree Quality:	
• Arboricultural Assessment	P
• Contribution to Urban Amenity	P
Recommendation:	Remove
Location	

Survey Details:

Organisation:	dsb Landscape Architects	Grid Co-ordinates:	E 203081.013	N 600522.748
Date of Survey:	4 th November 2009	Assessor ID:	JL & ST	

Tree Details:

Species:	Eucalyptus viminalis			Common Name:	Ribbon gum		
Height:	3.5	Canopy spread:	2	Trunk Circum:	700	N° of Trunks	3
Health/Condition:	Relative density of foliage						L
	Amount of dead wood in canopy						L
	Prevalence of insect attack or disease						M
	Prevalence of epicormic growth						L
	Prevalence of mistletoe						H
Overall health/condition of the tree						P	
Age:	A	Age/Health/Condition:	A/P	Form:	S	Hazard Potential:	L
Habitat Value:	N			Tolerance to Disturbance:	M		

Contribution to Future Urban Amenity:

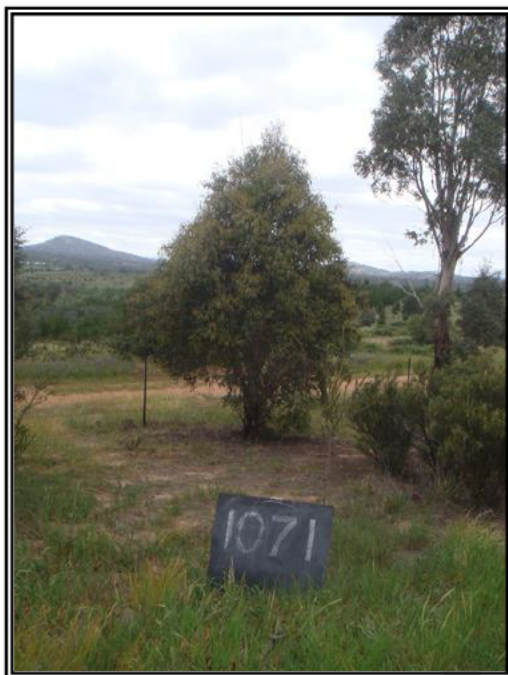
Scenic:	L	Rareness or Commonness:	M	Habitat quality:	M	Cultural, Social, Scientific:	L
Contribution to Immediate Landscaping:		L	Comment: Small dying stunted tree.				
Economic justification for retention or removal:							
Ameliorative work to reduce Risk:			N	Is work cost effective?:			
Landscape Groups:		Comment:					

Tree Protection and Management:

Tree Protection Zone & Conditions:	M	b, c & d always apply					
Arboricultural Notes:							

MOLONGLO / COOMBS & WRIGHT TREE ASSESSMENT

Tree N^o: 1071



Regulated Tree:	N
Classification of Tree Quality:	
• Arboricultural Assessment	P
• Contribution to Urban Amenity	P
Recommendation:	Remove
Location	

Survey Details:

Organisation:	dsb Landscape Architects	Grid Co-ordinates:	E 203078.387 N 600517.535
Date of Survey:	4 th November 2009	Assessor ID:	JL & ST

Tree Details:

Species:	Eucalyptus viminalis			Common Name:	Ribbon gum		
Height:	3.5	Canopy spread:	2	Trunk Circum:	800	N ^o of Trunks	4
Health/Condition:	Relative density of foliage						M
	Amount of dead wood in canopy						M
	Prevalence of insect attack or disease						M
	Prevalence of epicormic growth						L
	Prevalence of mistletoe						H
Overall health/condition of the tree						P	
Age:	A	Age/Health/Condition:	A/P	Form:	S	Hazard Potential:	L
Habitat Value:	N			Tolerance to Disturbance:	M		

Contribution to Future Urban Amenity:

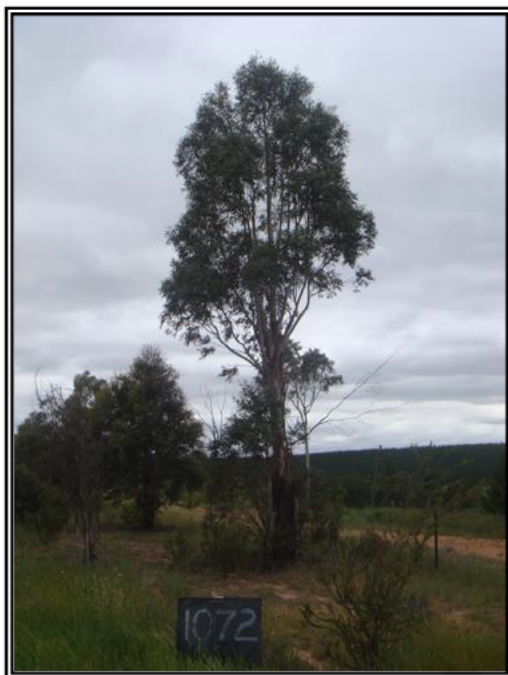
Scenic:	L	Rareness or Commonness:	M	Habitat quality:	M	Cultural, Social, Scientific:	L
Contribution to Immediate Landscaping:	L		Comment:	Small stunted tree.			
Economic justification for retention or removal:							
Ameliorative work to reduce Risk:	N		Is work cost effective?:				
Landscape Groups:			Comment:				

Tree Protection and Management:

Tree Protection Zone & Conditions:	M	b, c & d always apply
Arboricultural Notes:		

MOLONGLO / COOMBS & WRIGHT TREE ASSESSMENT

Tree N^o: 1072



Regulated Tree:	N
Classification of Tree Quality:	
• Arboricultural Assessment	M
• Contribution to Urban Amenity	M
Recommendation:	Retain
Location	

Survey Details:

Organisation:	dsb Landscape Architects	Grid Co-ordinates:	E 203075.149	N 600512.665
Date of Survey:	4 th November 2009	Assessor ID:	JL & ST	

Tree Details:

Species:	Eucalyptus viminalis			Common Name:	Ribbon gum		
Height:	9.5	Canopy spread:	4	Trunk Circum:	1100	N ^o of Trunks	1
Health/Condition:	Relative density of foliage						M
	Amount of dead wood in canopy						H
	Prevalence of insect attack or disease						H
	Prevalence of epicormic growth						M
	Prevalence of mistletoe						H
Overall health/condition of the tree						G	
Age:	A	Age/Health/Condition:	A/G	Form:	T	Hazard Potential:	L
Habitat Value:	N			Tolerance to Disturbance:	M		

Contribution to Future Urban Amenity:

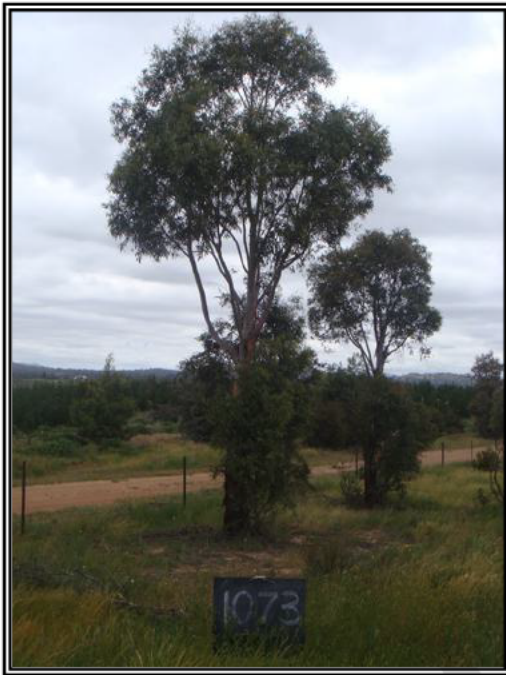
Scenic:	H	Rareness or Commonness:	M	Habitat quality:	M	Cultural, Social, Scientific:	L
Contribution to Immediate Landscaping:	M		Comment:	Good tree.			
Economic justification for retention or removal:							
Ameliorative work to reduce Risk:	N		Is work cost effective?:				
Landscape Groups:		Comment:					

Tree Protection and Management:

Tree Protection Zone & Conditions:	M	b, c & d always apply
Arboricultural Notes:	Remove small lower branches.	

MOLONGLO / COOMBS & WRIGHT TREE ASSESSMENT

Tree N^o: 1073



Regulated Tree:	N
Classification of Tree Quality:	
• Arboricultural Assessment	M
• Contribution to Urban Amenity	M
Recommendation:	Retain
Location	

Survey Details:

Organisation:	dsb Landscape Architects	Grid Co-ordinates:	E 203065.410	N 600499.012
Date of Survey:	4 th November 2009	Assessor ID:	JL & ST	

Tree Details:

Species:	Eucalyptus viminalis			Common Name:	Ribbon gum		
Height:	9	Canopy spread:	4	Trunk Circum:	1100	N ^o of Trunks	1
Health/Condition:	Relative density of foliage						M
	Amount of dead wood in canopy						H
	Prevalence of insect attack or disease						H
	Prevalence of epicormic growth						M
	Prevalence of mistletoe						H
Overall health/condition of the tree						G	
Age:	A	Age/Health/Condition:	A/G	Form:	T	Hazard Potential:	L
Habitat Value:	N			Tolerance to Disturbance:	M		

Contribution to Future Urban Amenity:

Scenic:	H	Rareness or Commonness:	M	Habitat quality:	M	Cultural, Social, Scientific:	L
Contribution to Immediate Landscaping:	M		Comment:	Good form.			
Economic justification for retention or removal:							
Ameliorative work to reduce Risk:	N			Is work cost effective?:			
Landscape Groups:		Comment:					

Tree Protection and Management:

Tree Protection Zone & Conditions:	M	b, c & d always apply
Arboricultural Notes:	Remove lower branches.	

MOLONGLO / COOMBS & WRIGHT TREE ASSESSMENT

Tree N^o: 1074



Regulated Tree:	N
Classification of Tree Quality:	
• Arboricultural Assessment	M
• Contribution to Urban Amenity	M
Recommendation:	Retain
Location	

Survey Details:

Organisation:	dsb Landscape Architects	Grid Co-ordinates:	E 203062.399	N 600494.393
Date of Survey:	4 th November 2009	Assessor ID:	JL & ST	

Tree Details:

Species:	Eucalyptus elata			Common Name:	River peppermint		
Height:	6.5	Canopy spread:	4	Trunk Circum:	900	N ^o of Trunks	1
Health/Condition:	Relative density of foliage						M
	Amount of dead wood in canopy						H
	Prevalence of insect attack or disease						H
	Prevalence of epicormic growth						M
	Prevalence of mistletoe						H
Overall health/condition of the tree						G	
Age:	A	Age/Health/Condition:	A/G	Form:	T	Hazard Potential:	L
Habitat Value:	N			Tolerance to Disturbance:	M		

Contribution to Future Urban Amenity:

Scenic:	H	Rareness or Commonness:	M	Habitat quality:	M	Cultural, Social, Scientific:	L
Contribution to Immediate Landscaping:	M		Comment:	Good tree.			
Economic justification for retention or removal:							
Ameliorative work to reduce Risk:	N			Is work cost effective?:			
Landscape Groups:			Comment:				

Tree Protection and Management:

Tree Protection Zone & Conditions:	M	b, c & d always apply
Arboricultural Notes:	Remove numerous small low branches.	

MOLONGLO / COOMBS & WRIGHT TREE ASSESSMENT

Tree N°: 1075



Regulated Tree:	N
Classification of Tree Quality:	
• Arboricultural Assessment	P
• Contribution to Urban Amenity	P
Recommendation:	Remove
Location	

Survey Details:

Organisation:	dsb Landscape Architects	Grid Co-ordinates:	E 203054.150	N 600481.570
Date of Survey:	4 th November 2009	Assessor ID:	JL & ST	

Tree Details:

Species:	Eucalyptus rubida			Common Name:	Candle bark		
Height:	4	Canopy spread:	2	Trunk Circum:	500	N° of Trunks	1
Health/Condition:	Relative density of foliage						L
	Amount of dead wood in canopy						M
	Prevalence of insect attack or disease						M
	Prevalence of epicormic growth						L
	Prevalence of mistletoe						H
Overall health/condition of the tree						P	
Age:	A	Age/Health/Condition:	A/P	Form:	S	Hazard Potential:	L
Habitat Value:	N			Tolerance to Disturbance:	M		

Contribution to Future Urban Amenity:

Scenic:	L	Rareness or Commonness:	M	Habitat quality:	M	Cultural, Social, Scientific:	L
Contribution to Immediate Landscaping:	L		Comment:	Weak small tree, very poor form.			
Economic justification for retention or removal:							
Ameliorative work to reduce Risk:	N			Is work cost effective?:			
Landscape Groups:			Comment:				

Tree Protection and Management:

Tree Protection Zone & Conditions:	M	b, c & d always apply
Arboricultural Notes:		

MOLONGLO / COOMBS & WRIGHT TREE ASSESSMENT

Tree N°: 1076



Regulated Tree:	N
Classification of Tree Quality:	
• Arboricultural Assessment	P
• Contribution to Urban Amenity	P
Recommendation:	Remove
Location	

Survey Details:

Organisation:	dsb Landscape Architects	Grid Co-ordinates:	E 203050.512	N 600480.806
Date of Survey:	4 th November 2009	Assessor ID:	JL & ST	

Tree Details:

Species:	Eucalyptus bicostata			Common Name:	Blue gum		
Height:	4.5	Canopy spread:	2	Trunk Circum:	600	N° of Trunks	2
Health/Condition:	Relative density of foliage						L
	Amount of dead wood in canopy						L
	Prevalence of insect attack or disease						L
	Prevalence of epicormic growth						L
	Prevalence of mistletoe						H
Overall health/condition of the tree						P	
Age:	A	Age/Health/Condition:	A/P	Form:	S	Hazard Potential:	L
Habitat Value:	N			Tolerance to Disturbance:	M		

Contribution to Future Urban Amenity:

Scenic:	L	Rareness or Commonness:	M	Habitat quality:	M	Cultural, Social, Scientific:	L
Contribution to Immediate Landscaping:		L	Comment: Unsuitable species, coppice growth.				
Economic justification for retention or removal:							
Ameliorative work to reduce Risk:			N	Is work cost effective?:			
Landscape Groups:		Comment:					

Tree Protection and Management:

Tree Protection Zone & Conditions:	M	b, c & d always apply					
Arboricultural Notes:	Dying.						