

MOLONGLO / COOMBS & WRIGHT TREE ASSESSMENT

Tree N°: 1136



Regulated Tree:	N
Classification of Tree Quality:	
• Arboricultural Assessment	H
• Contribution to Urban Amenity	M
Recommendation:	Retain
Location	

Survey Details:

Organisation:	dsb Landscape Architects	Grid Co-ordinates:	E 202329.978	N 599882.670
Date of Survey:	30 th October 2009	Assessor ID:	JL & ST	

Tree Details:

Species:	Eucalyptus mannifera			Common Name:	White brittle gum		
Height:	6.5	Canopy spread:	6	Trunk Circum:	900	N° of Trunks	1
Health/Condition:	Relative density of foliage						H
	Amount of dead wood in canopy						H
	Prevalence of insect attack or disease						H
	Prevalence of epicormic growth						H
	Prevalence of mistletoe						H
	Overall health/condition of the tree						G
Age:	A	Age/Health/Condition:	A/G	Form:	T	Hazard Potential:	L
Habitat Value:	N			Tolerance to Disturbance:	M		

Contribution to Future Urban Amenity:

Scenic:	M	Rareness or Commonness:	M	Habitat quality:	M	Cultural, Social, Scientific:	L
Contribution to Immediate Landscaping:	H		Comment:	Well-formed young tree.			
Economic justification for retention or removal:							
Ameliorative work to reduce Risk:	N			Is work cost effective?:			
Landscape Groups:		Comment:					

Tree Protection and Management:

Tree Protection Zone & Conditions:	M	b, c & d always apply
Arboricultural Notes:		

MOLONGLO / COOMBS & WRIGHT TREE ASSESSMENT

Tree N^o: 1137



Regulated Tree:	N
Classification of Tree Quality:	
• Arboricultural Assessment	M
• Contribution to Urban Amenity	P
Recommendation:	Remove
Location	

Survey Details:

Organisation:	dsb Landscape Architects	Grid Co-ordinates:	E 202347.514	N 599880.698
Date of Survey:	30 th October 2009	Assessor ID:	JL & ST	

Tree Details:

Species:	Eucalyptus rubida			Common Name:	Candle bark		
Height:	6.5	Canopy spread:	4	Trunk Circum:	1450	N ^o of Trunks	4
Health/Condition:	Relative density of foliage						M
	Amount of dead wood in canopy						H
	Prevalence of insect attack or disease						H
	Prevalence of epicormic growth						H
	Prevalence of mistletoe						H
Overall health/condition of the tree						F	
Age:	A	Age/Health/Condition:	A/F	Form:	U	Hazard Potential:	L
Habitat Value:	N			Tolerance to Disturbance:	M		

Contribution to Future Urban Amenity:

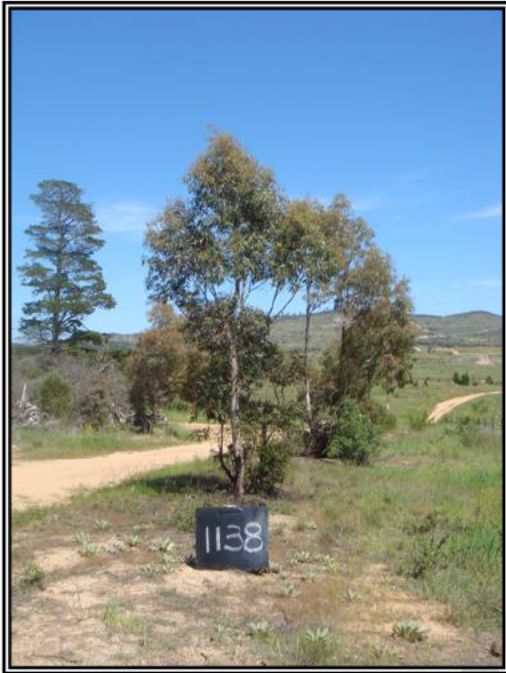
Scenic:	L	Rareness or Commonness:	M	Habitat quality:	M	Cultural, Social, Scientific:	L
Contribution to Immediate Landscaping:	L		Comment:	Poor form, leaning.			
Economic justification for retention or removal:							
Ameliorative work to reduce Risk:	Y			Is work cost effective?:	N		
Landscape Groups:	Comment:						

Tree Protection and Management:

Tree Protection Zone & Conditions:	M	b, c & d always apply
Arboricultural Notes:		

MOLONGLO / COOMBS & WRIGHT TREE ASSESSMENT

Tree N°:	1138
----------	------



Regulated Tree:	N
Classification of Tree Quality:	
• Arboricultural Assessment	H
• Contribution to Urban Amenity	M
Recommendation:	Retain
Location	

Survey Details:

Organisation:	dsb Landscape Architects	Grid Co-ordinates:	E 202357.355	N599879.368
Date of Survey:	30 th October 2009	Assessor ID:	JL & ST	

Tree Details:

Species:	Eucalyptus elata			Common Name:	River peppermint		
Height:	6	Canopy spread:	2	Trunk Circum:	800	N° of Trunks	3
Health/Condition:	Relative density of foliage						H
	Amount of dead wood in canopy						H
	Prevalence of insect attack or disease						H
	Prevalence of epicormic growth						H
	Prevalence of mistletoe						H
Overall health/condition of the tree						G	
Age:	A	Age/Health/Condition:	A/G	Form:	T	Hazard Potential:	L
Habitat Value:	N			Tolerance to Disturbance:	M		

Contribution to Future Urban Amenity:

Scenic:	M	Rareness or Commonness:	M	Habitat quality:	M	Cultural, Social, Scientific:	L
Contribution to Immediate Landscaping:		H	Comment:				
Economic justification for retention or removal:							
Ameliorative work to reduce Risk:			Y	Is work cost effective?:			Y
Landscape Groups:		Comment:					

Tree Protection and Management:

Tree Protection Zone & Conditions:	M	b, c & d always apply
Arboricultural Notes:	Remove two small trunks.	

MOLONGLO / COOMBS & WRIGHT TREE ASSESSMENT

Tree N°: 1216



Regulated Tree:	N
Classification of Tree Quality:	
• Arboricultural Assessment	P
• Contribution to Urban Amenity	P
Recommendation:	Remove
Location	

Survey Details:

Organisation:	dsb Landscape Architects	Grid Co-ordinates:	E 202708.890	N 599957.226
Date of Survey:	4 th November 2009	Assessor ID:	JL & ST	

Tree Details:

Species:	Eucalyptus rubida			Common Name:	Candle bark		
Height:	7.1	Canopy spread:	5	Trunk Circum:	900	N° of Trunks	1
Health/Condition:	Relative density of foliage						M
	Amount of dead wood in canopy						M
	Prevalence of insect attack or disease						H
	Prevalence of epicormic growth						H
	Prevalence of mistletoe						H
Overall health/condition of the tree						F	
Age:	A	Age/Health/Condition:	A/F	Form:	U	Hazard Potential:	M
Habitat Value:	N			Tolerance to Disturbance:	M		

Contribution to Future Urban Amenity:

Scenic:	L	Rareness or Commonness:	M	Habitat quality:	M	Cultural, Social, Scientific:	L
Contribution to Immediate Landscaping:		L	Comment:				
Economic justification for retention or removal:							
Ameliorative work to reduce Risk:			Y	Is work cost effective?:			N
Landscape Groups:		Comment:					

Tree Protection and Management:

Tree Protection Zone & Conditions:	M	b, c & d always apply
Arboricultural Notes:	Poor form in upper canopy.	

MOLONGLO / COOMBS & WRIGHT TREE ASSESSMENT

Tree N^o: 1217



Regulated Tree:	N
Classification of Tree Quality:	
• Arboricultural Assessment	P
• Contribution to Urban Amenity	P
Recommendation:	Remove
Location	

Survey Details:

Organisation:	dsb Landscape Architects	Grid Co-ordinates:	E 202702.955	N 599948.071
Date of Survey:	4 th November 2009	Assessor ID:	JL & ST	

Tree Details:

Species:	Eucalyptus rubida			Common Name:	Candle bark		
Height:	6.5	Canopy spread:	4	Trunk Circum:	1300	N ^o of Trunks	4
Health/Condition:	Relative density of foliage						M
	Amount of dead wood in canopy						M
	Prevalence of insect attack or disease						H
	Prevalence of epicormic growth						H
	Prevalence of mistletoe						H
Overall health/condition of the tree						F	
Age:	A	Age/Health/Condition:	A/F	Form:	U	Hazard Potential:	M
Habitat Value:	N			Tolerance to Disturbance:	M		

Contribution to Future Urban Amenity:

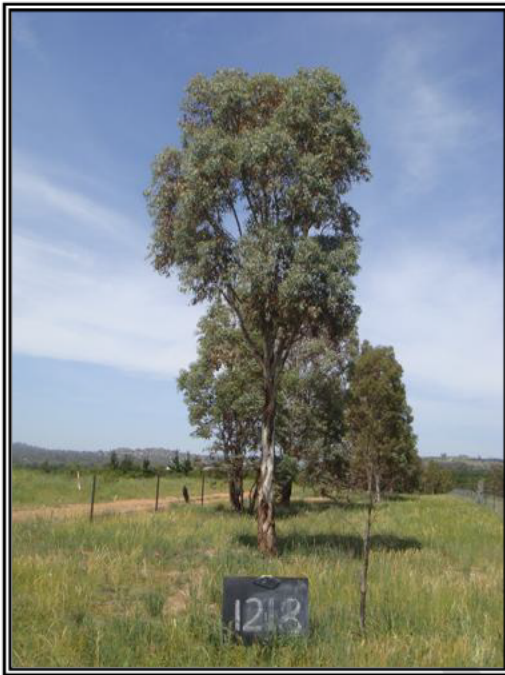
Scenic:	L	Rareness or Commonness:	M	Habitat quality:	M	Cultural, Social, Scientific:	L
Contribution to Immediate Landscaping:		L	Comment:				
Economic justification for retention or removal:							
Ameliorative work to reduce Risk:			Y	Is work cost effective?:			N
Landscape Groups:		Comment:					

Tree Protection and Management:

Tree Protection Zone & Conditions:	M	b, c & d always apply
Arboricultural Notes:	Poor form. Removing trunks will damage tree.	

MOLONGLO / COOMBS & WRIGHT TREE ASSESSMENT

Tree N°:	1218
----------	------



Regulated Tree:	N
Classification of Tree Quality:	
• Arboricultural Assessment	M
• Contribution to Urban Amenity	M
Recommendation:	Retain
Location	

Survey Details:

Organisation:	dsb Landscape Architects	Grid Co-ordinates:	E 202689.278	N 599931.883
Date of Survey:	4 th November 2009	Assessor ID:	JL & ST	

Tree Details:

Species:	Eucalyptus rubida			Common Name:	Candle bark		
Height:	8.1	Canopy spread:	5	Trunk Circum:	800	N° of Trunks	1
Health/Condition:	Relative density of foliage						M
	Amount of dead wood in canopy						H
	Prevalence of insect attack or disease						H
	Prevalence of epicormic growth						H
	Prevalence of mistletoe						H
	Overall health/condition of the tree						G
Age:	A	Age/Health/Condition:	A/G	Form:	T	Hazard Potential:	L
Habitat Value:	N			Tolerance to Disturbance:	M		

Contribution to Future Urban Amenity:

Scenic:	M	Rareness or Commonness:	M	Habitat quality:	M	Cultural, Social, Scientific:	L
Contribution to Immediate Landscaping:	M		Comment:	Good young tree.			
Economic justification for retention or removal:							
Ameliorative work to reduce Risk:	N		Is work cost effective?:				
Landscape Groups:		Comment:					

Tree Protection and Management:

Tree Protection Zone & Conditions:	M	b, c & d always apply
Arboricultural Notes:		

MOLONGLO / COOMBS & WRIGHT TREE ASSESSMENT

Tree N^o: 1219



Regulated Tree:	Y
Classification of Tree Quality:	
• Arboricultural Assessment	P
• Contribution to Urban Amenity	P
Recommendation:	Remove
Location	

Survey Details:

Organisation:	dsb Landscape Architects	Grid Co-ordinates:	E 202686.778	N 599922.655
Date of Survey:	4 th November 2009	Assessor ID:	JL & ST	

Tree Details:

Species:	Eucalyptus rubida			Common Name:	Candle bark		
Height:	7	Canopy spread:	4	Trunk Circum:	1700	N ^o of Trunks	8
Health/Condition:	Relative density of foliage						M
	Amount of dead wood in canopy						H
	Prevalence of insect attack or disease						H
	Prevalence of epicormic growth						H
	Prevalence of mistletoe						H
Overall health/condition of the tree						F	
Age:	A	Age/Health/Condition:	A/F	Form:	U	Hazard Potential:	M
Habitat Value:	N			Tolerance to Disturbance:	M		

Contribution to Future Urban Amenity:

Scenic:	L	Rareness or Commonness:	M	Habitat quality:	M	Cultural, Social, Scientific:	L
Contribution to Immediate Landscaping:		L	Comment:				
Economic justification for retention or removal:							
Ameliorative work to reduce Risk:			Y	Is work cost effective?:			N
Landscape Groups:		Comment:					

Tree Protection and Management:

Tree Protection Zone & Conditions:	M	b, c & d always apply
Arboricultural Notes:	Removing trunks will damage tree.	

MOLONGLO / COOMBS & WRIGHT TREE ASSESSMENT

Tree N°: 1220



Regulated Tree:	N
Classification of Tree Quality:	
• Arboricultural Assessment	P
• Contribution to Urban Amenity	P
Recommendation:	Remove
Location	

Survey Details:

Organisation:	dsb Landscape Architects	Grid Co-ordinates:	E 202683.138	N 599917.518
Date of Survey:	4 th November 2009	Assessor ID:	JL & ST	

Tree Details:

Species:	Eucalyptus rubida			Common Name:	Candle bark		
Height:	8.1	Canopy spread:	6	Trunk Circum:	1300	N° of Trunks	1
Health/Condition:	Relative density of foliage						M
	Amount of dead wood in canopy						H
	Prevalence of insect attack or disease						H
	Prevalence of epicormic growth						H
	Prevalence of mistletoe						H
Overall health/condition of the tree						F	
Age:	A	Age/Health/Condition:	A/F	Form:	U	Hazard Potential:	M
Habitat Value:	N			Tolerance to Disturbance:	M		

Contribution to Future Urban Amenity:

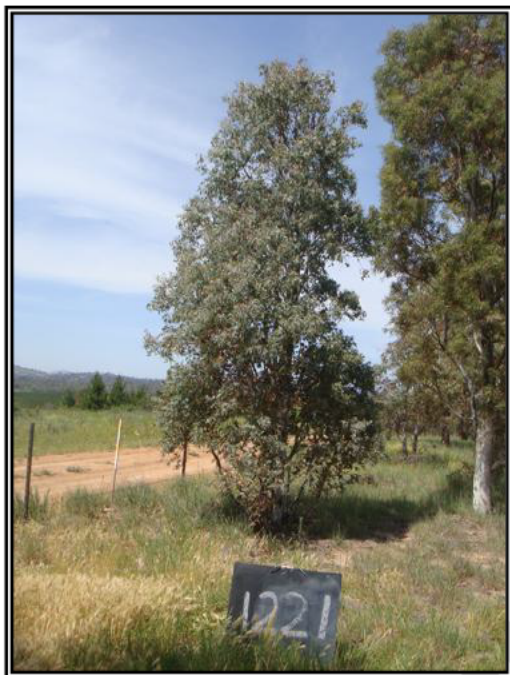
Scenic:	L	Rareness or Commonness:	M	Habitat quality:	M	Cultural, Social, Scientific:	L
Contribution to Immediate Landscaping:		L	Comment:				
Economic justification for retention or removal:							
Ameliorative work to reduce Risk:			Y	Is work cost effective?:			N
Landscape Groups:		Comment:					

Tree Protection and Management:

Tree Protection Zone & Conditions:	M	b, c & d always apply
Arboricultural Notes:	Poor unions from 1 to 2 metres.	

MOLONGLO / COOMBS & WRIGHT TREE ASSESSMENT

Tree N°: 1221



Regulated Tree:	N
Classification of Tree Quality:	
• Arboricultural Assessment	P
• Contribution to Urban Amenity	P
Recommendation:	Remove
Location	

Survey Details:

Organisation:	dsb Landscape Architects	Grid Co-ordinates:	E 202677.293	N 599908.894
Date of Survey:	4 th November 2009	Assessor ID:	JL & ST	

Tree Details:

Species:	Eucalyptus rubida			Common Name:	Candle bark		
Height:	6.3	Canopy spread:	3	Trunk Circum:	1200	N° of Trunks	7
Health/Condition:	Relative density of foliage						M
	Amount of dead wood in canopy						H
	Prevalence of insect attack or disease						H
	Prevalence of epicormic growth						H
	Prevalence of mistletoe						H
Overall health/condition of the tree						F	
Age:	A	Age/Health/Condition:	A/F	Form:	U	Hazard Potential:	M
Habitat Value:	N			Tolerance to Disturbance:	M		

Contribution to Future Urban Amenity:

Scenic:	L	Rareness or Commonness:	M	Habitat quality:	M	Cultural, Social, Scientific:	L
Contribution to Immediate Landscaping:		L	Comment:				
Economic justification for retention or removal:							
Ameliorative work to reduce Risk:			Y	Is work cost effective?:			N
Landscape Groups:		Comment:					

Tree Protection and Management:

Tree Protection Zone & Conditions:	M	b, c & d always apply
Arboricultural Notes:	Removing trunks will damage tree.	

MOLONGLO / COOMBS & WRIGHT TREE ASSESSMENT

Tree N^o: 1222



Regulated Tree:	N
Classification of Tree Quality:	
• Arboricultural Assessment	M
• Contribution to Urban Amenity	M
Recommendation:	Retain
Location	

Survey Details:

Organisation:	dsb Landscape Architects	Grid Co-ordinates:	E 202673.670 N599908.211
Date of Survey:	4 th November 2009	Assessor ID:	JL & ST

Tree Details:

Species:	Eucalyptus mannifera			Common Name:	White brittle gum		
Height:	8.4	Canopy spread:	4	Trunk Circum:	900	N ^o of Trunks	1
Health/Condition:	Relative density of foliage						H
	Amount of dead wood in canopy						H
	Prevalence of insect attack or disease						H
	Prevalence of epicormic growth						H
	Prevalence of mistletoe						H
Overall health/condition of the tree						G	
Age:	A	Age/Health/Condition:	A/G	Form:	T	Hazard Potential:	L
Habitat Value:	N			Tolerance to Disturbance:	M		

Contribution to Future Urban Amenity:

Scenic:	M	Rareness or Commonness:	M	Habitat quality:	M	Cultural, Social, Scientific:	L
Contribution to Immediate Landscaping:		M	Comment:				
Economic justification for retention or removal:							
Ameliorative work to reduce Risk:			Y	Is work cost effective?:			Y
Landscape Groups:		Comment:					

Tree Protection and Management:

Tree Protection Zone & Conditions:	M	b, c & d always apply
Arboricultural Notes:	Remove small lower branches.	

MOLONGLO / COOMBS & WRIGHT TREE ASSESSMENT

Tree N°: 1223



Regulated Tree:	N
Classification of Tree Quality:	
• Arboricultural Assessment	P
• Contribution to Urban Amenity	P
Recommendation:	Remove
Location	

Survey Details:

Organisation:	dsb Landscape Architects	Grid Co-ordinates:	E 202671.069	N 599903.340
Date of Survey:	4 th November 2009	Assessor ID:	JL & ST	

Tree Details:

Species:	Eucalyptus rubida			Common Name:	Candle bark		
Height:	9.5	Canopy spread:	3	Trunk Circum:	800	N° of Trunks	1
Health/Condition:	Relative density of foliage						M
	Amount of dead wood in canopy						H
	Prevalence of insect attack or disease						M
	Prevalence of epicormic growth						H
	Prevalence of mistletoe						H
Overall health/condition of the tree						P	
Age:	A	Age/Health/Condition:	A/P	Form:	T	Hazard Potential:	M
Habitat Value:	N			Tolerance to Disturbance:	M		

Contribution to Future Urban Amenity:

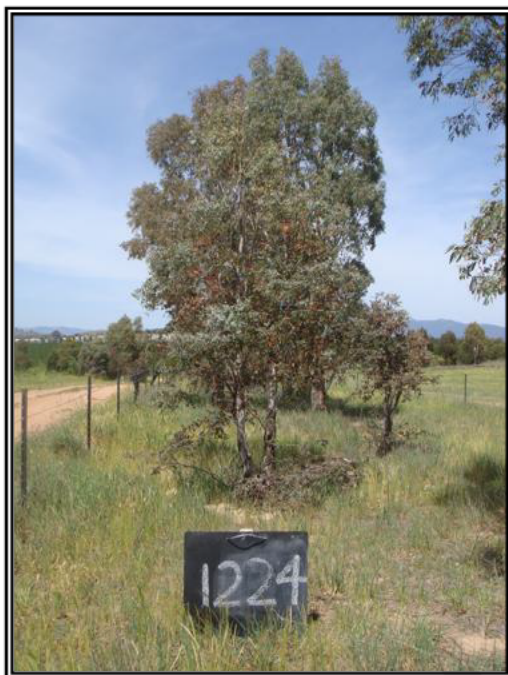
Scenic:	L	Rareness or Commonness:	M	Habitat quality:	M	Cultural, Social, Scientific:	L
Contribution to Immediate Landscaping:		L	Comment:				
Economic justification for retention or removal:							
Ameliorative work to reduce Risk:			Y	Is work cost effective?:			N
Landscape Groups:		Comment:					

Tree Protection and Management:

Tree Protection Zone & Conditions:	M	b, c & d always apply
Arboricultural Notes:	Poor unions at 6 metres.	

MOLONGLO / COOMBS & WRIGHT TREE ASSESSMENT

Tree N^o: 1224



Regulated Tree:	N
Classification of Tree Quality:	
• Arboricultural Assessment	P
• Contribution to Urban Amenity	P
Recommendation:	Remove
Location	

Survey Details:

Organisation:	dsb Landscape Architects	Grid Co-ordinates:	E 202670.474	N 599899.412
Date of Survey:	4 th November 2009	Assessor ID:	JL & ST	

Tree Details:

Species:	Eucalyptus rubida			Common Name:	Candle bark		
Height:	4.7	Canopy spread:	2	Trunk Circum:	700	N ^o of Trunks	3
Health/Condition:	Relative density of foliage						L
	Amount of dead wood in canopy						M
	Prevalence of insect attack or disease						H
	Prevalence of epicormic growth						H
	Prevalence of mistletoe						H
Overall health/condition of the tree						P	
Age:	A	Age/Health/Condition:	A/P	Form:	U	Hazard Potential:	M
Habitat Value:	N			Tolerance to Disturbance:	M		

Contribution to Future Urban Amenity:

Scenic:	L	Rareness or Commonness:	M	Habitat quality:	M	Cultural, Social, Scientific:	L
Contribution to Immediate Landscaping:		L	Comment:				
Economic justification for retention or removal:							
Ameliorative work to reduce Risk:			Y	Is work cost effective?:			N
Landscape Groups:		Comment:					

Tree Protection and Management:

Tree Protection Zone & Conditions:	M	b, c & d always apply
Arboricultural Notes:	Coppice only.	

MOLONGLO / COOMBS & WRIGHT TREE ASSESSMENT

Tree N^o: 1225



Regulated Tree:	N
Classification of Tree Quality:	
• Arboricultural Assessment	M
• Contribution to Urban Amenity	M
Recommendation:	Retain
Location	

Survey Details:

Organisation:	dsb Landscape Architects	Grid Co-ordinates:	E 202663.920	N 599893.100
Date of Survey:	4 th November 2009	Assessor ID:	JL & ST	

Tree Details:

Species:	Eucalyptus rubida			Common Name:	Candle bark		
Height:	8.3	Canopy spread:	4	Trunk Circum:	900	N ^o of Trunks	1
Health/Condition:	Relative density of foliage						M
	Amount of dead wood in canopy						H
	Prevalence of insect attack or disease						H
	Prevalence of epicormic growth						H
	Prevalence of mistletoe						H
	Overall health/condition of the tree						G
Age:	A	Age/Health/Condition:	A/G	Form:	T	Hazard Potential:	L
Habitat Value:	N			Tolerance to Disturbance:	M		

Contribution to Future Urban Amenity:

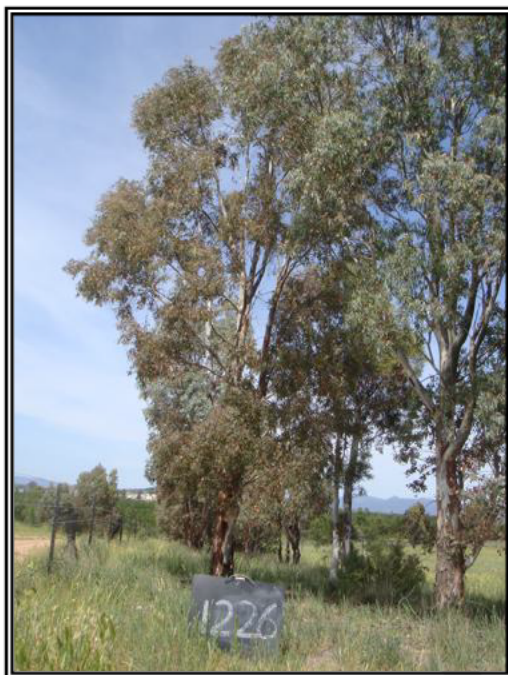
Scenic:	M	Rareness or Commonness:	M	Habitat quality:	M	Cultural, Social, Scientific:	L
Contribution to Immediate Landscaping:		M	Comment:				
Economic justification for retention or removal:							
Ameliorative work to reduce Risk:			Y	Is work cost effective?:			Y
Landscape Groups:		Comment:					

Tree Protection and Management:

Tree Protection Zone & Conditions:	M	b, c & d always apply
Arboricultural Notes:	Remove small lower branches.	

MOLONGLO / COOMBS & WRIGHT TREE ASSESSMENT

Tree N°: 1226



Regulated Tree:	N
Classification of Tree Quality:	
• Arboricultural Assessment	P
• Contribution to Urban Amenity	P
Recommendation:	Remove
Location	

Survey Details:

Organisation:	dsb Landscape Architects	Grid Co-ordinates:	E 202664.108	N 599889.012
Date of Survey:	4 th November 2009	Assessor ID:	JL & ST	

Tree Details:

Species:	Eucalyptus rubida			Common Name:	Candle bark		
Height:	9.2	Canopy spread:	6	Trunk Circum:	1100	N° of Trunks	1
Health/Condition:	Relative density of foliage						M
	Amount of dead wood in canopy						H
	Prevalence of insect attack or disease						L
	Prevalence of epicormic growth						H
	Prevalence of mistletoe						H
Overall health/condition of the tree						P	
Age:	A	Age/Health/Condition:	A/P	Form:	T	Hazard Potential:	M
Habitat Value:	N			Tolerance to Disturbance:	M		

Contribution to Future Urban Amenity:

Scenic:	L	Rareness or Commonness:	M	Habitat quality:	M	Cultural, Social, Scientific:	L
Contribution to Immediate Landscaping:		L	Comment:				
Economic justification for retention or removal:							
Ameliorative work to reduce Risk:			Y	Is work cost effective?:			N
Landscape Groups:		Comment:					

Tree Protection and Management:

Tree Protection Zone & Conditions:	M	b, c & d always apply
Arboricultural Notes:	White ants in union at 1.5 metres.	

MOLONGLO / COOMBS & WRIGHT TREE ASSESSMENT

Tree N°: 1227



Regulated Tree:	N
Classification of Tree Quality:	
• Arboricultural Assessment	P
• Contribution to Urban Amenity	P
Recommendation:	Remove
Location	

Survey Details:

Organisation:	dsb Landscape Architects	Grid Co-ordinates:	E 202660.399	N 599887.885
Date of Survey:	4 th November 2009	Assessor ID:	JL & ST	

Tree Details:

Species:	Eucalyptus mannifera			Common Name:	White brittle gum		
Height:	6.5	Canopy spread:	3	Trunk Circum:	800	N° of Trunks	2
Health/Condition:	Relative density of foliage						M
	Amount of dead wood in canopy						H
	Prevalence of insect attack or disease						H
	Prevalence of epicormic growth						H
	Prevalence of mistletoe						H
Overall health/condition of the tree						F	
Age:	A	Age/Health/Condition:	A/F	Form:	U	Hazard Potential:	M
Habitat Value:	N			Tolerance to Disturbance:	M		

Contribution to Future Urban Amenity:

Scenic:	L	Rareness or Commonness:	M	Habitat quality:	M	Cultural, Social, Scientific:	L
Contribution to Immediate Landscaping:	L	Comment:					
Economic justification for retention or removal:							
Ameliorative work to reduce Risk:	Y		Is work cost effective?:	N			
Landscape Groups:		Comment:					

Tree Protection and Management:

Tree Protection Zone & Conditions:	M	b, c & d always apply
Arboricultural Notes:	Removing trunks will damage tree.	

MOLONGLO / COOMBS & WRIGHT TREE ASSESSMENT

Tree N^o: 1228



Regulated Tree:	N
Classification of Tree Quality:	
• Arboricultural Assessment	P
• Contribution to Urban Amenity	P
Recommendation:	Remove
Location	

Survey Details:

Organisation:	dsb Landscape Architects	Grid Co-ordinates:	E 202657.561	N 599883.438
Date of Survey:	4 th November 2009	Assessor ID:	JL & ST	

Tree Details:

Species:	Eucalyptus rubida			Common Name:	Candle bark		
Height:	6.8	Canopy spread:	2.5	Trunk Circum:	1300	N ^o of Trunks	6
Health/Condition:	Relative density of foliage						L
	Amount of dead wood in canopy						L
	Prevalence of insect attack or disease						M
	Prevalence of epicormic growth						H
	Prevalence of mistletoe						H
Overall health/condition of the tree						P	
Age:	A	Age/Health/Condition:	A/P	Form:	U	Hazard Potential:	L
Habitat Value:	N			Tolerance to Disturbance:	M		

Contribution to Future Urban Amenity:

Scenic:	L	Rareness or Commonness:	M	Habitat quality:	M	Cultural, Social, Scientific:	L
Contribution to Immediate Landscaping:		L	Comment:				
Economic justification for retention or removal:							
Ameliorative work to reduce Risk:			Y	Is work cost effective?:			N
Landscape Groups:		Comment:					

Tree Protection and Management:

Tree Protection Zone & Conditions:	M	b, c & d always apply
Arboricultural Notes:	Dieback and dead leaders.	

MOLONGLO / COOMBS & WRIGHT TREE ASSESSMENT

Tree N^o: 1229



Regulated Tree:	Y
Classification of Tree Quality:	
• Arboricultural Assessment	P
• Contribution to Urban Amenity	P
Recommendation:	Remove
Location	

Survey Details:

Organisation:	dsb Landscape Architects	Grid Co-ordinates:	E 202657.924	N 599878.980
Date of Survey:	4 th November 2009	Assessor ID:	JL & ST	

Tree Details:

Species:	Eucalyptus rubida			Common Name:	Candle bark		
Height:	8.3	Canopy spread:	7	Trunk Circum:	1500	N ^o of Trunks	3
Health/Condition:	Relative density of foliage						M
	Amount of dead wood in canopy						H
	Prevalence of insect attack or disease						H
	Prevalence of epicormic growth						H
	Prevalence of mistletoe						H
Overall health/condition of the tree						F	
Age:	A	Age/Health/Condition:	A/F	Form:	U	Hazard Potential:	M
Habitat Value:	N			Tolerance to Disturbance:	M		

Contribution to Future Urban Amenity:

Scenic:	L	Rareness or Commonness:	M	Habitat quality:	M	Cultural, Social, Scientific:	L
Contribution to Immediate Landscaping:		L	Comment:				
Economic justification for retention or removal:							
Ameliorative work to reduce Risk:			Y	Is work cost effective?:			N
Landscape Groups:		Comment:					

Tree Protection and Management:

Tree Protection Zone & Conditions:	M	b, c & d always apply
Arboricultural Notes:	Removing trunks will damage tree.	

MOLONGLO / COOMBS & WRIGHT TREE ASSESSMENT

Tree N°: 1230



Regulated Tree:	N
Classification of Tree Quality:	
• Arboricultural Assessment	P
• Contribution to Urban Amenity	P
Recommendation:	Remove
Location	

Survey Details:

Organisation:	dsb Landscape Architects	Grid Co-ordinates:	E 202650.876	N 599873.999
Date of Survey:	4 th November 2009	Assessor ID:	JL & ST	

Tree Details:

Species:	Eucalyptus rubida			Common Name:	Candle bark		
Height:	7.5	Canopy spread:	7	Trunk Circum:	1300	N° of Trunks	4
Health/Condition:	Relative density of foliage						M
	Amount of dead wood in canopy						M
	Prevalence of insect attack or disease						H
	Prevalence of epicormic growth						H
	Prevalence of mistletoe						H
Overall health/condition of the tree						F	
Age:	A	Age/Health/Condition:	A/F	Form:	U	Hazard Potential:	M
Habitat Value:	N			Tolerance to Disturbance:	M		

Contribution to Future Urban Amenity:

Scenic:	L	Rareness or Commonness:	M	Habitat quality:	M	Cultural, Social, Scientific:	L
Contribution to Immediate Landscaping:		L	Comment:				
Economic justification for retention or removal:							
Ameliorative work to reduce Risk:			Y	Is work cost effective?:			N
Landscape Groups:		Comment:					

Tree Protection and Management:

Tree Protection Zone & Conditions:	M	b, c & d always apply
Arboricultural Notes:	Removing trunks will damage tree.	

MOLONGLO / COOMBS & WRIGHT TREE ASSESSMENT

Tree N^o: 1231



Regulated Tree:	Y
Classification of Tree Quality:	
• Arboricultural Assessment	P
• Contribution to Urban Amenity	P
Recommendation:	Remove
Location	

Survey Details:

Organisation:	dsb Landscape Architects	Grid Co-ordinates:	E 202651.575	N 599869.585
Date of Survey:	4 th November 2009	Assessor ID:	JL & ST	

Tree Details:

Species:	Eucalyptus rubida			Common Name:	Candle bark		
Height:	7.6	Canopy spread:	7	Trunk Circum:	1900	N ^o of Trunks	5
Health/Condition:	Relative density of foliage						M
	Amount of dead wood in canopy						H
	Prevalence of insect attack or disease						H
	Prevalence of epicormic growth						H
	Prevalence of mistletoe						H
Overall health/condition of the tree						F	
Age:	A	Age/Health/Condition:	A/F	Form:	U	Hazard Potential:	M
Habitat Value:	N			Tolerance to Disturbance:	M		

Contribution to Future Urban Amenity:

Scenic:	L	Rareness or Commonness:	M	Habitat quality:	M	Cultural, Social, Scientific:	L
Contribution to Immediate Landscaping:		L	Comment:				
Economic justification for retention or removal:							
Ameliorative work to reduce Risk:			Y	Is work cost effective?:			N
Landscape Groups:		Comment:					

Tree Protection and Management:

Tree Protection Zone & Conditions:	M	b, c & d always apply
Arboricultural Notes:	Removing trunks will damage tree.	