

Point Hut Crossing—Murrumbidgee River

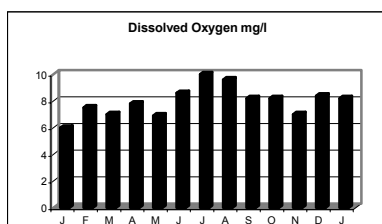
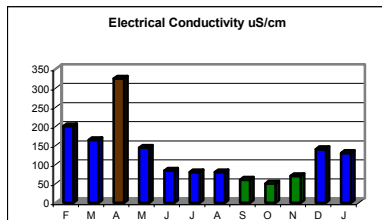
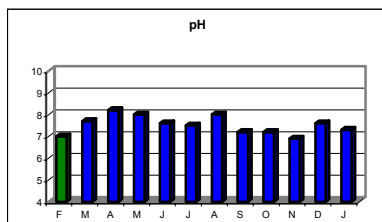
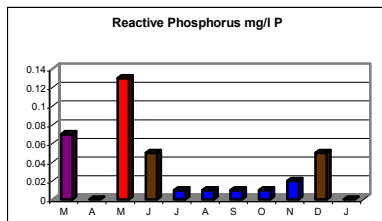
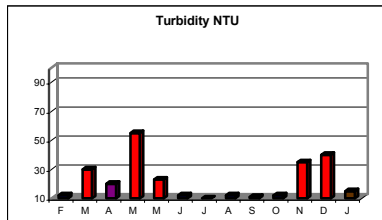


Participant Comments: Bidgee Blue Group

- Rain caused increases in turbidity and deposits of ash, soot and sediments on the river's edge.
- Occasional spikes in phosphorus levels.
- No significant sediment deposits.
- Increased algal growth during hot weather.
- High phosphorus readings not recorded in pre-fire monitoring.
- No flow in February after fires.
- Extensive algal growth in some water pools during no flows.

Habitat Recovery

Water Quality



February 2003



February 2003



November 2003



June 2003

