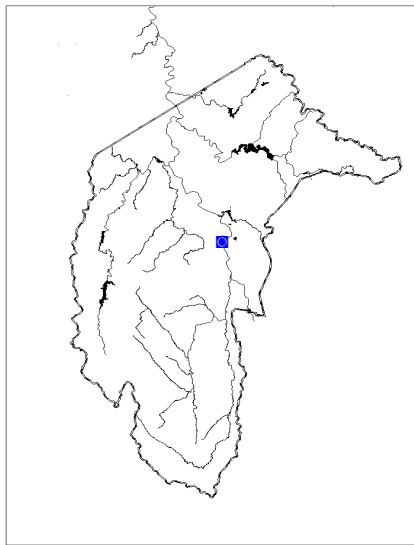


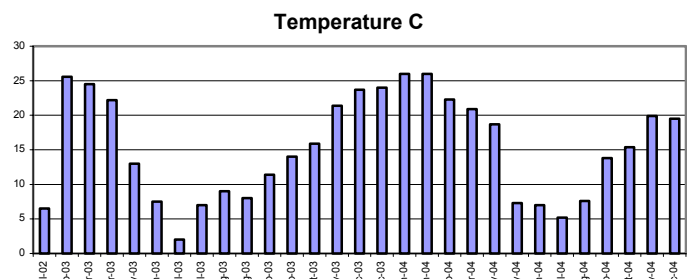
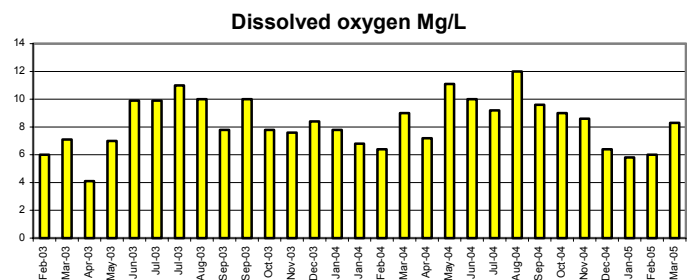
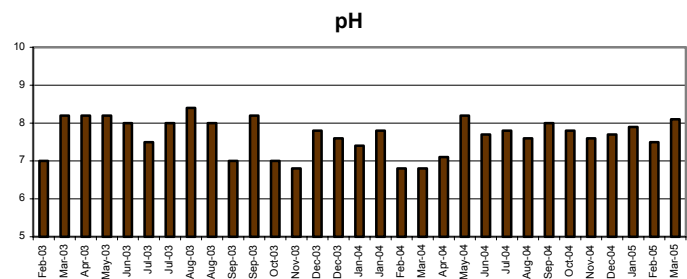
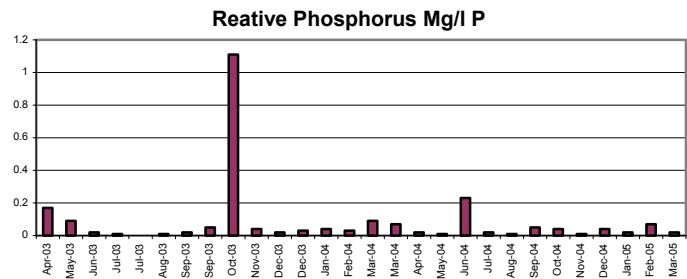
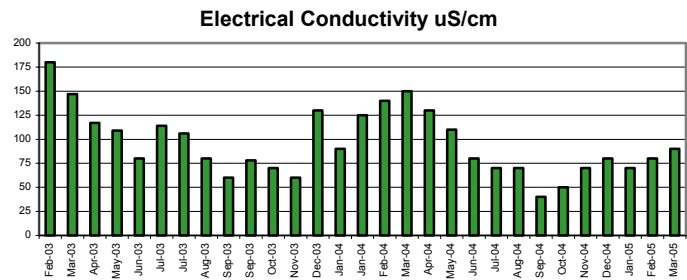
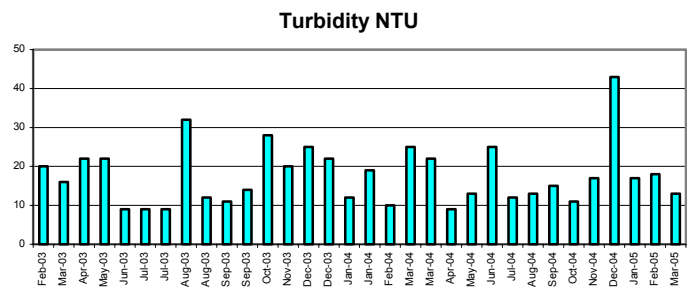
# 8.4 Tharwa Bridge—Murrumbidgee River



Water quality

## Participant comments: Bidgee Blue Group and Ron & Bern

- Rain caused increases in turbidity and deposits of ash, soot and sediments on river's edge.
- Severe tree and understorey fire damage now recovering.
- Recreation swimming area impacted and damaged tree felling.
- Increased algal growth during hot weather.
- High phosphorus readings not recorded in pre-fire monitoring.
- Rain caused increases in turbidity and deposits of ash, soot and sediments on river's edge.
- Pollution event in October with spikes in phosphorus levels which also affected downstream results.
- Damaged as a recreation area—river now covered in black sticky mud.
- Birds at the site, kookaburras, plovers, currawongs, magpies and galahs. Cicadas still in trees. Dead animals near weeds along bank near bridge due to stench. Insects causing stress on the tops of trees (native and exotic), also causing stress of plants occurring along stream edge. Algae with and aquatic plants particularly eloada occurring at this site (big increase). Placement of snagging at the foot of bridge and possible sandbar creation. Still sediment at this site with algae growing on the sediment (olive) with long filaments of bright algae in middle channels under the bridge.



## Habitat recovery upstream



February 2003



February 2003



November 2003



January 2004



March 2004



May 2004



August 2004



February 2005



May 2005

## Habitat recovery downstream



February 2003



November 2003



June 2003



January 2004



March 2004



November 2004



August 2004

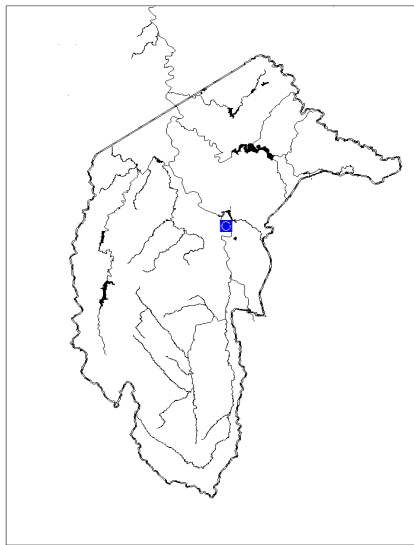


February 2005



May 2005

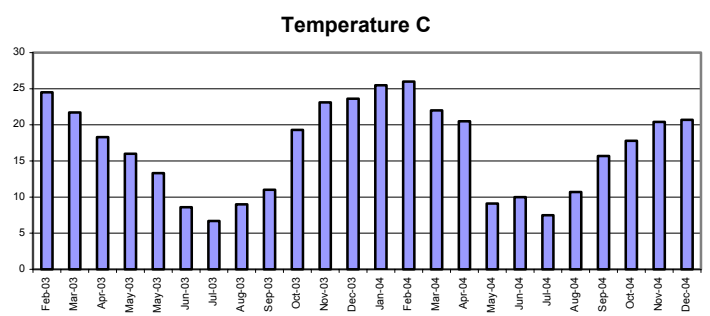
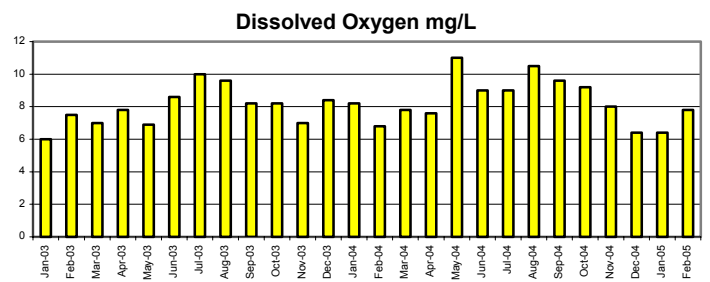
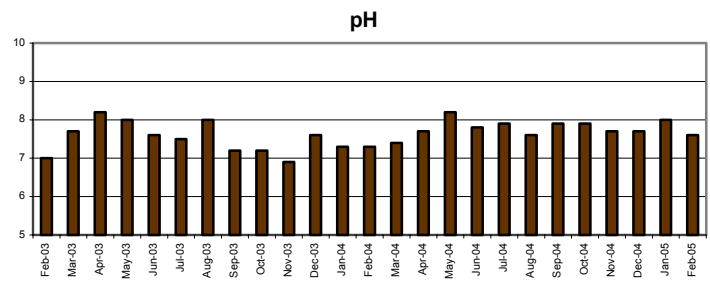
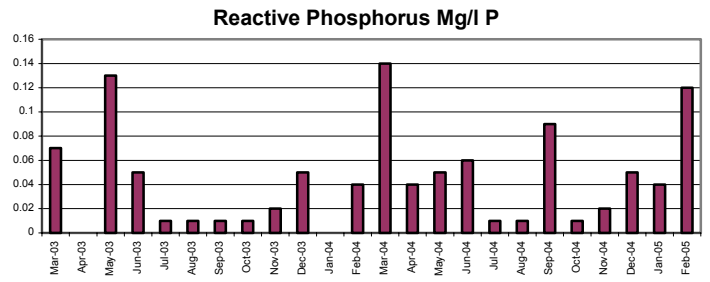
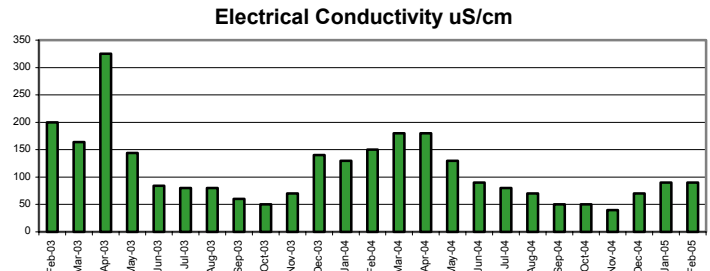
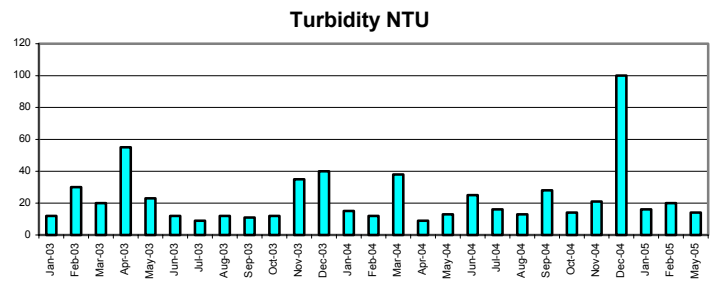
# 8.5 Point Hut Crossing—Murrumbidgee River



## Water Quality

### Participant comments: Bidgee Blue Group

- Rain caused increases in turbidity and deposits of ash, soot and sediments on the river's edge.
- Occasional spikes in phosphorus levels.
- No significant sediment deposits.
- Increased algal growth during hot weather.
- High phosphorus readings not recorded in pre-fire monitoring.
- No flow in February after fires.
- Extensive algal growth in some water pools during no flows.
- Dec 04 Heavy rain 2 days before.



## Habitat recovery upstream



February 2003



February 2003



June 2003



November 2003



March 2004



May 2004



February 2005



May 2005



July 2003

## Habitat recovery downstream



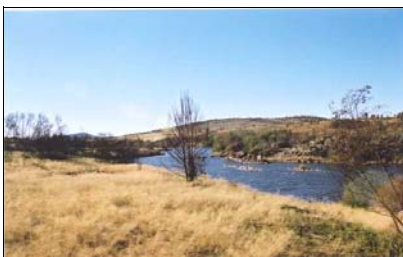
February 2003



February 2003



March 2003



June 2003



November 2003



May 2004



August 2004

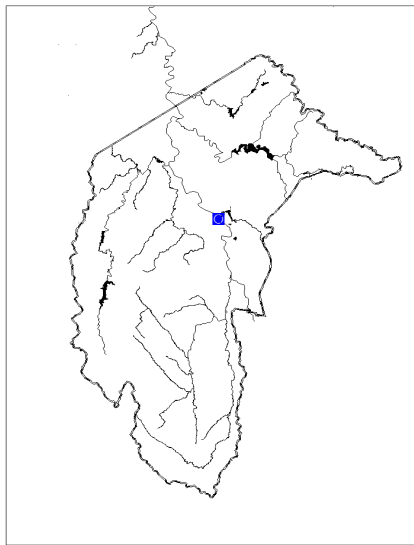


February 2005



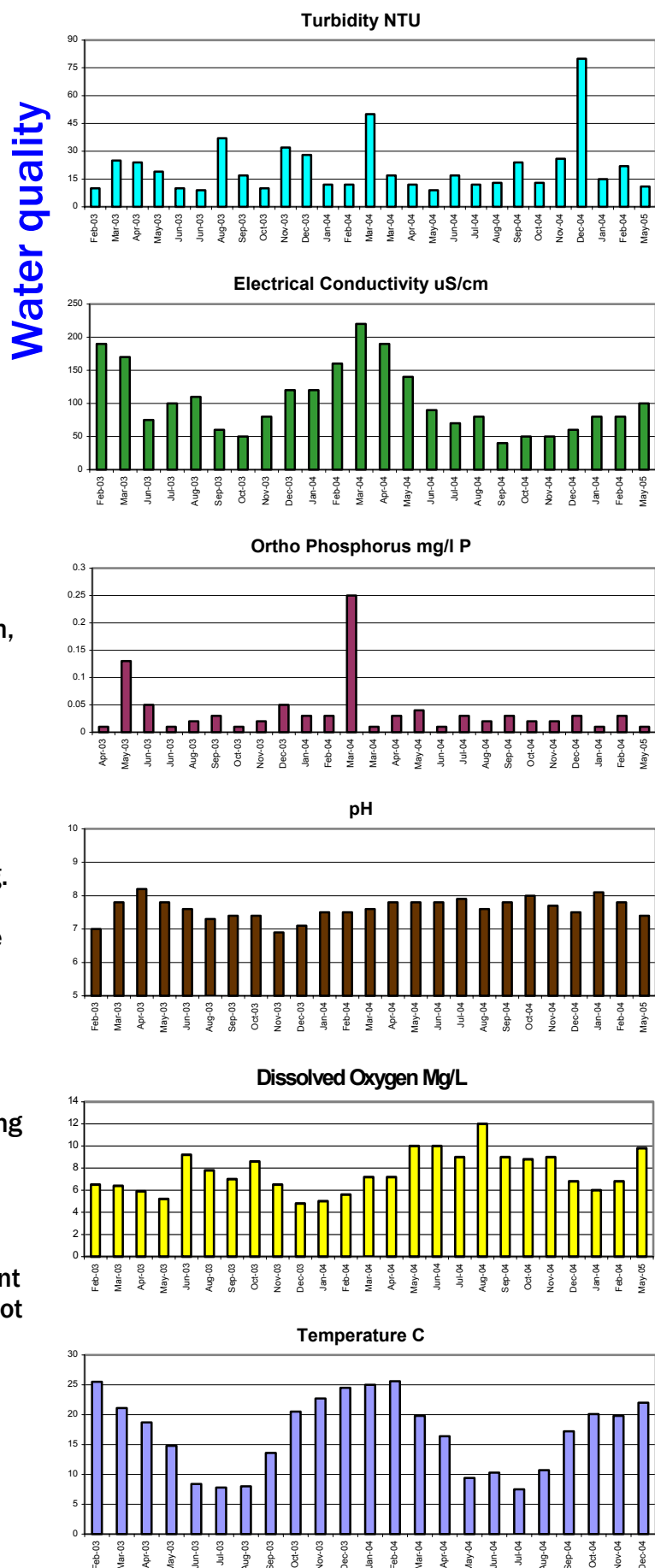
May 2005

## 8.6 Pine Island—Murrumbidgee River



### Participant comments: Bidgee Blue Group

- Rain caused increases in turbidity and deposits of ash, soot and sediments on the river's edge.
- Occasional spikes in phosphorus levels.
- No significant sediment deposits.
- Severe tree and understory fire damage now recovering.
- Return of water bugs, frogs but no big fish sighted since the fires.
- Recreation swimming and BBQ area impacted with restoration programs in place.
- Increased algal growth during hot weather.
- High phosphorus readings not recorded in pre-fire monitoring.
- Lots of horse manure present on grassy area—may have got into the river.
- More than 50 water beetles surveyed in May 2004.



## Habitat recovery upstream



May 2003



August 2004



August 2004



May 2004



May 2005



May 2005



May 2005



May 2003