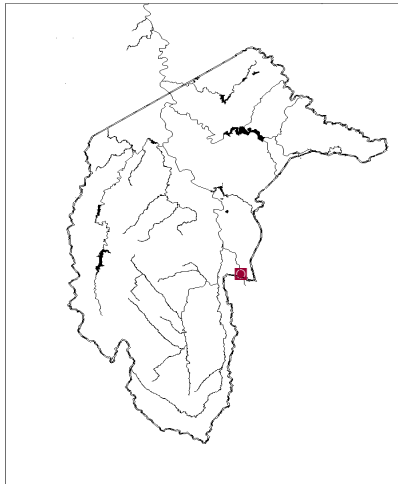


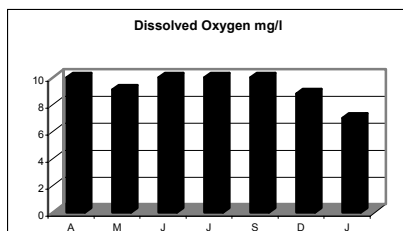
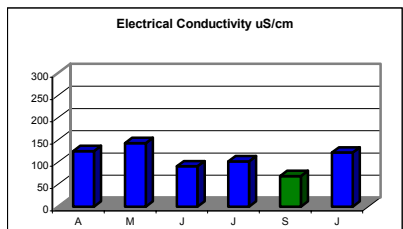
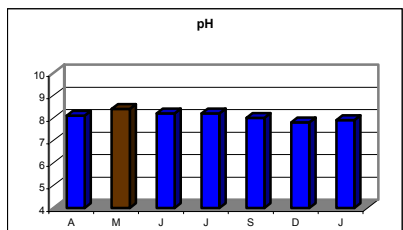
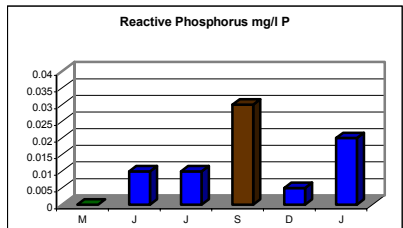
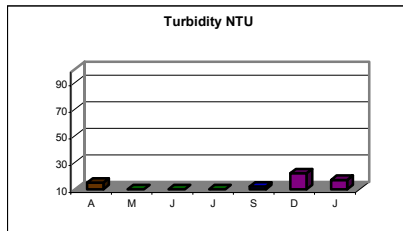
# Angle Crossing—Murrumbidgee River



## Participant Comments: Bernadette's group

- Paterson curse and blackberries a major problem following the fires.
- Fine sediments on the surface of the water.
- Wallabies, water hens, coots, ravens, cockatoos, insectivorous birds, wrens, finches, frogs and honey eaters.
- Increased sheet erosion from wind and water erosion on surrounding hills.
- Lots of small debris trapped amongst silt.
- Sand bar significantly elevated and extended.
- Several Fish sighted jumping.
- Lumps of charcoal along sandy beach.
- Salvinia present.

## Water Quality



## Habitat Recovery



March 2004