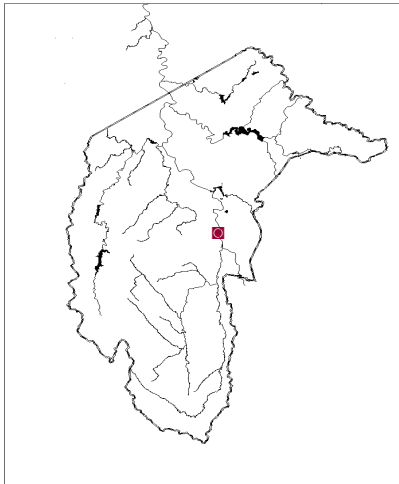


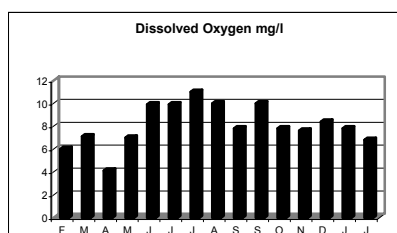
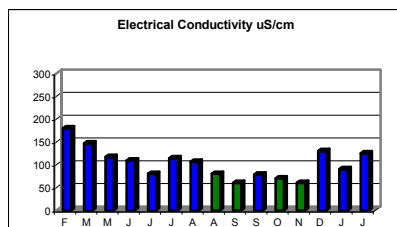
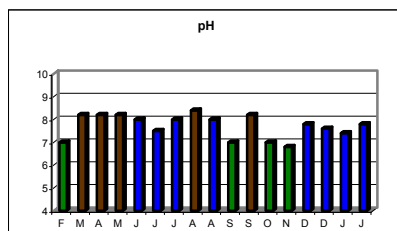
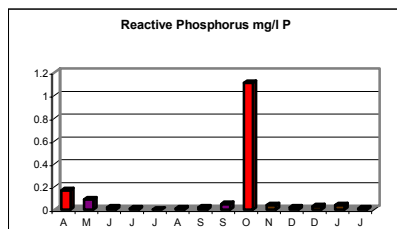
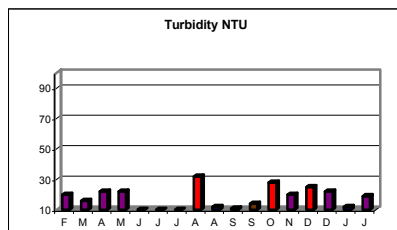
Tharwa Bridge—Murrumbidgee River



Participant Comments: Bidgee Blue Group

- Rain caused increases in turbidity and deposits of ash, soot and sediments on rivers edge.
- Severe tree and understory fire damage now recovering.
- Recreation swimming area impacted and damaged tree felling.
- Increased algal growth during hot weather.
- High phosphorus readings not recorded in pre-fire monitoring.
- Rain caused increases in turbidity and deposits of ash, soot and sediments on rivers edge.
- Pollution event in October with spikes in phosphorus levels which also affected downstream results.
- Damaged as a recreation area—river now covered in black sticky mud.

Water Quality



Habitat Recovery



February 2003



April/May 2003



November 2003



January 2004