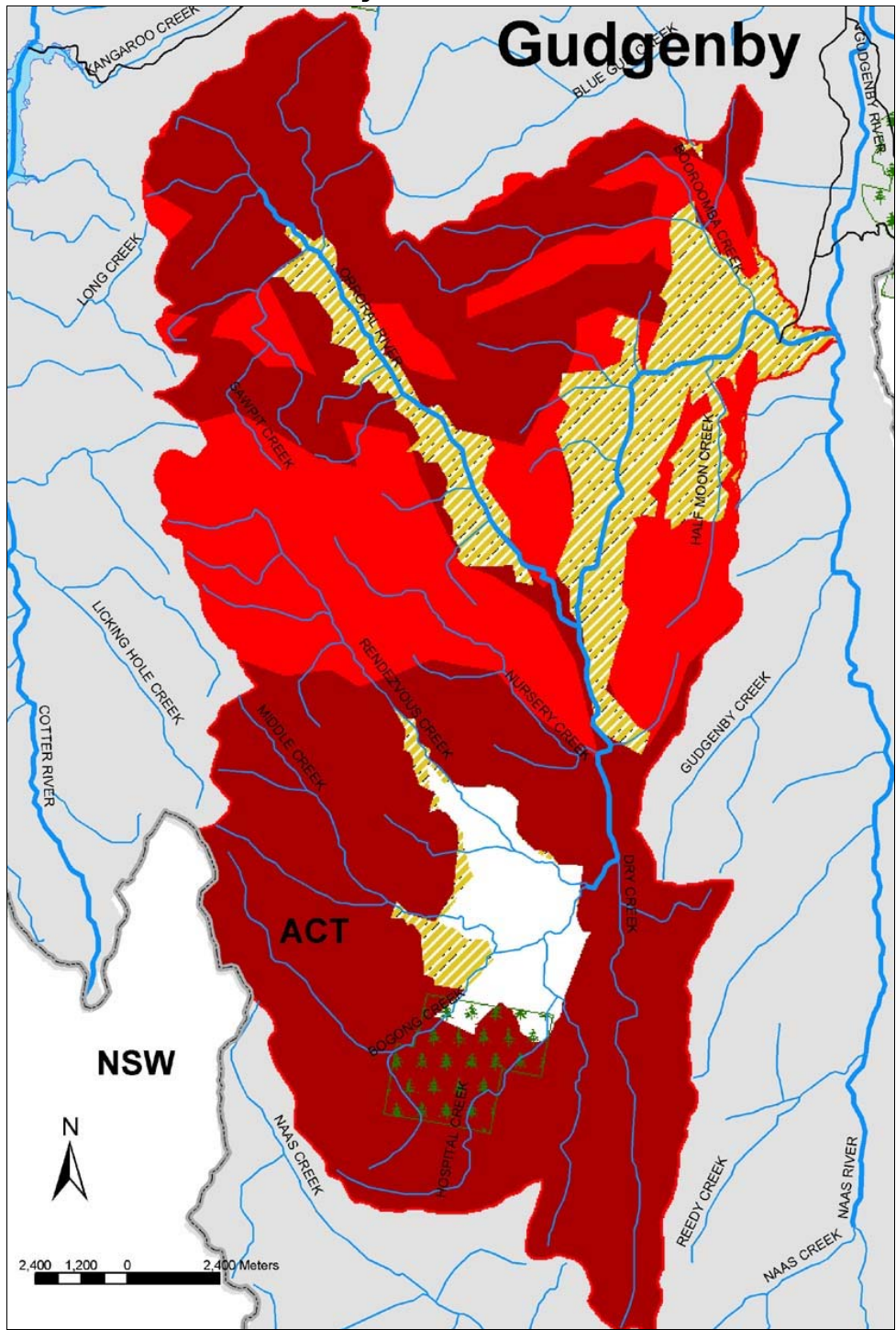




### 10.3 Bushfire severity



### Monthly average flow

Month Avg Flow (ML)

January	3,102
February	2,393
March	2,313
April	4,224
May	3,282
June	3,625
July	5,215
August	5,878
September	6,165
October	6,186
November	4,705
December	3,435

**Total 50,522**  
 Think water act water  
 Volume 3 November  
 2003

	Crownfire
	Crownfire—pines
	Primary grassfire
	Variable — mostly crown scorch
	Variable — mostly crown scorch pines

Most of the Gudgenby catchment affected by crownfire or crown scorch fire, although in the lower valley areas grass fires were sporadic depending on the availability of fire fuels in a drought affected landscape.

The Gudgenby Bush Regenerators have been working with the ACT Parks and Conservation Service to re-establish native vegetation on the site of the Boboyan Pine Plantation in Namadgi National Park.

Unusually high phosphorus readings became a feature of Hospital Creek especially during the warmer months.