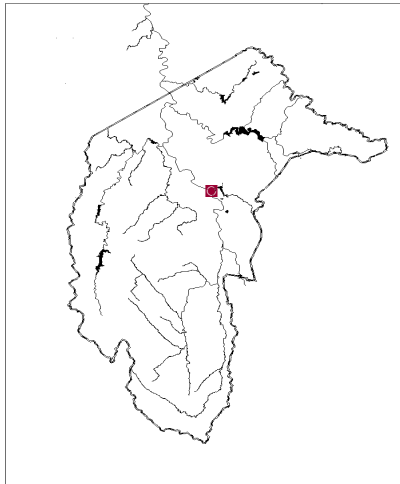


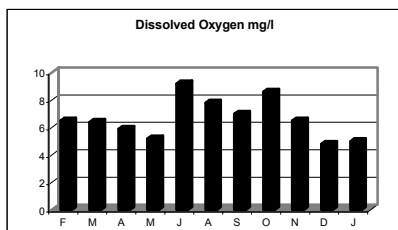
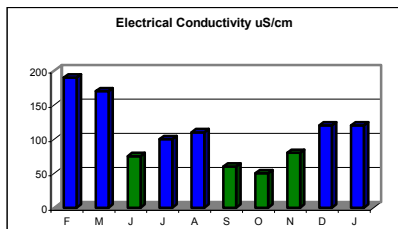
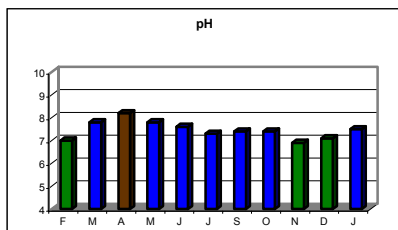
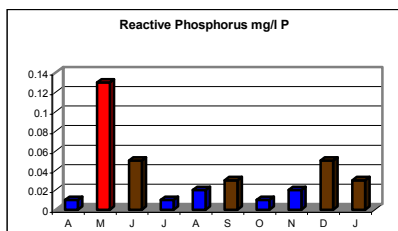
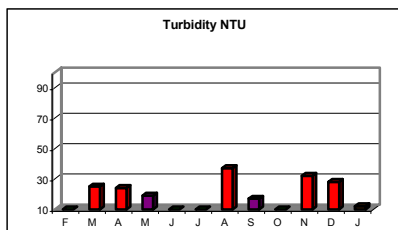
Pine Island—Murrumbidgee River



Participant Comments: Bidgee Blue Group

- Rain caused increases in turbidity and deposits of ash, soot and sediments on the river's edge.
- Occasional spikes in phosphorus levels.
- No significant sediment deposits.
- Severe tree and understory fire damage now recovering.
- Return of water bugs, frogs but no big fish sighted since the fires.
- Recreation swimming and BBQ area impacted with restoration programs in place.
- Increased algal growth during hot weather.
- High phosphorus readings not recorded in pre-fire monitoring.

Water Quality



Habitat Recovery



All pictures May 2003