

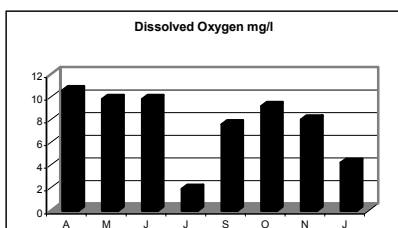
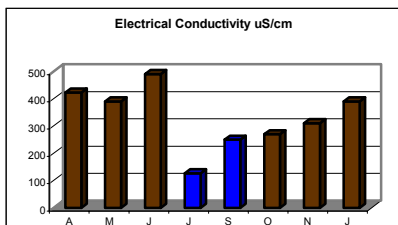
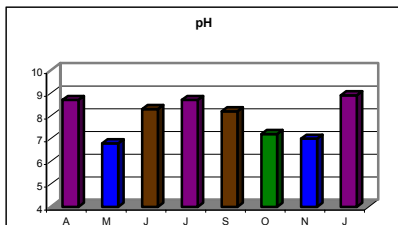
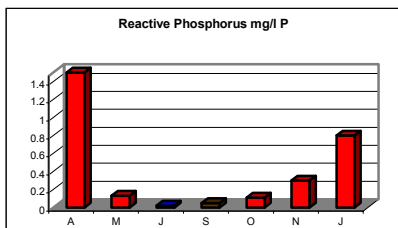
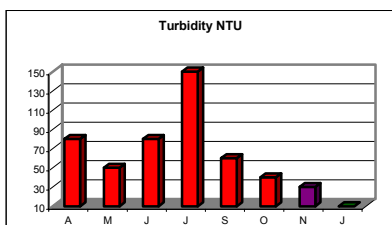
Coolleman Ridge Dam—Coolleman Ridge



Participant Comments: D. Tinney, Coolleman Ridge Parkcare Group

- Waist high weeds on banks. Paterson's Curse! and other weeds on the embankment.
- Turtles have reappeared and are basking on rocks on the waters edge.
- Considerable rain in October has raised water level and made the water very turbid.
- The wooden seat, which was destroyed in the fire, on the embankment of the dam has been rebuilt as have the fencing and gates in the area.
- May: While there was no algae in the surface, there was considerable release of gas from the dam floor which caused widespread and continuous bubbling on the surface. Mother and ducklings using the pond.
- Duck pontoon removed or vandalised?

Water Quality



Habitat Recovery



June 2003



April 2003