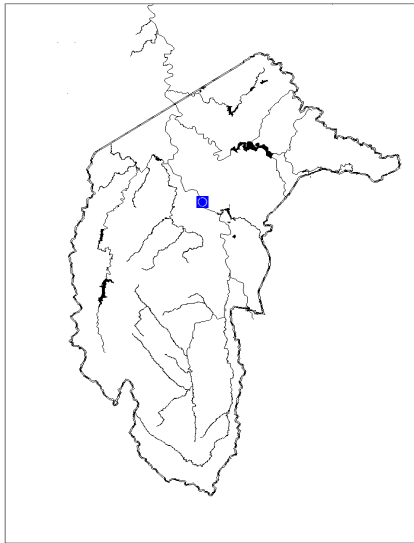
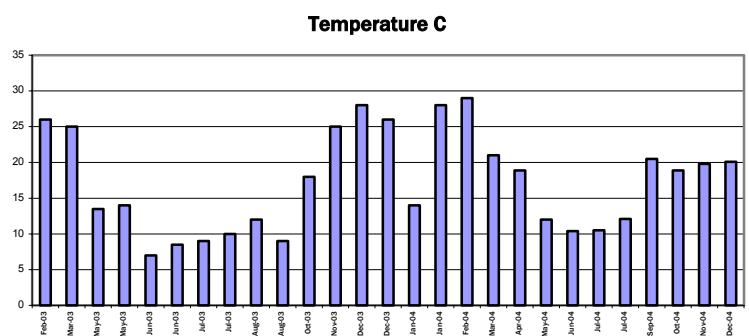
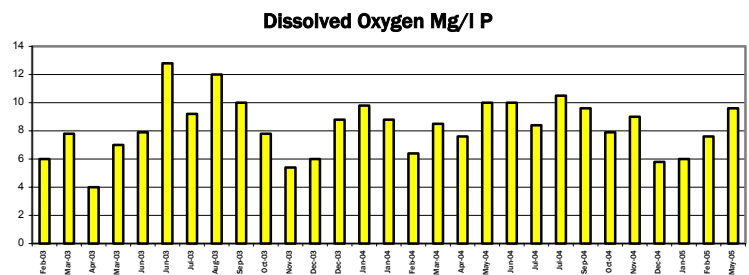
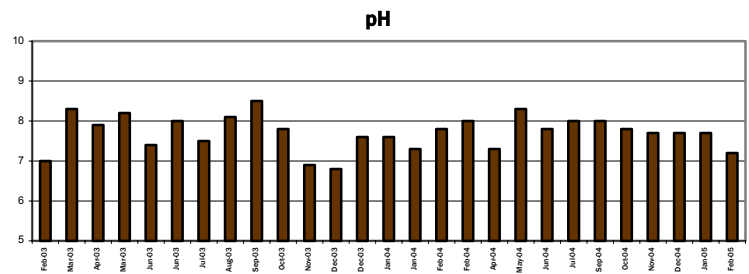
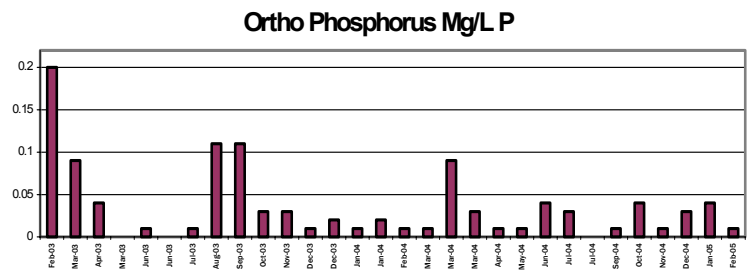
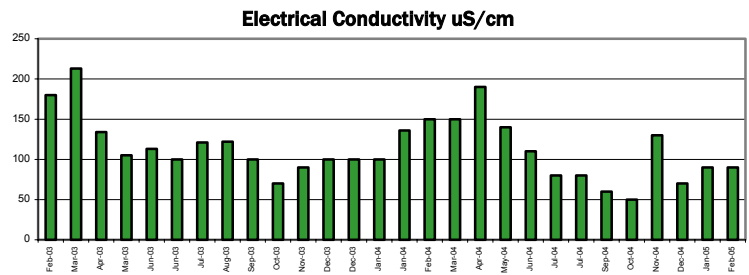
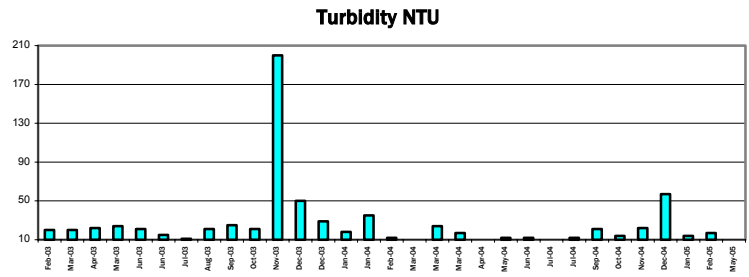


# 7.4 Kambah Pool—Murrumbidgee River



## Water Quality



### Participant comments: Bidgee Blue Group

- Rain caused increases in turbidity and deposits of ash, soot and sediments on the river's edge.
- Occasional spikes in phosphorus levels.
- No significant sediment deposits.
- Severe erosion issue where undergrowth is slow to recover on surrounding hills, especially notable during rain.
- Severe tree and understory fire damage now recovering.
- Return of water bugs, frogs but no big fish sighted since the fires.
- Recreation swimming area impacted and damaged tree felling.
- Increased algal growth during hot weather.
- High phosphorus readings not recorded in pre-fire monitoring.
- High turbidity reading in November after rain event.
- 50+ beetles surveyed in June 2004.
- Heavy rain in December.
- Had lunch with water dragon, saw many skinks and geckos.

## Habitat recovery



**March 2003**



**March 2003**



**March 2003**



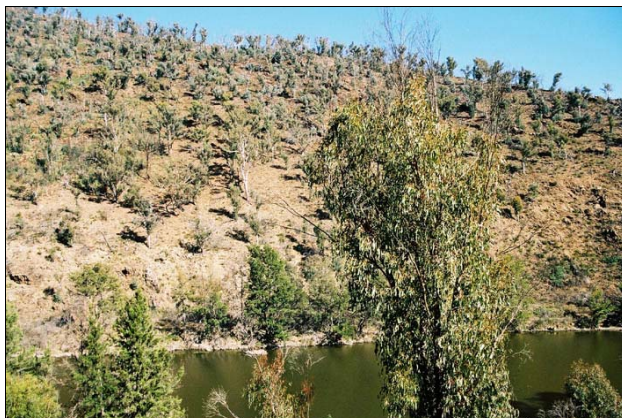
**August 2004**



**August 2004**



**February 2005**

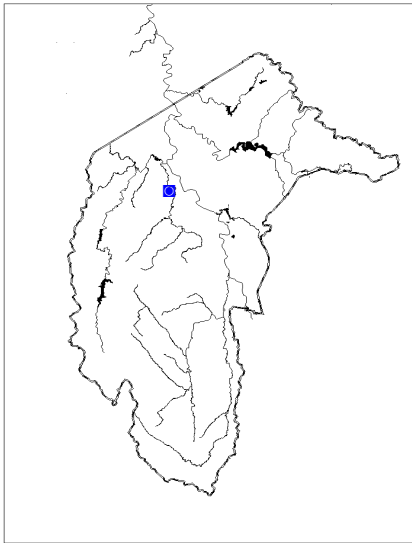


**May 2005**



**May 2005**

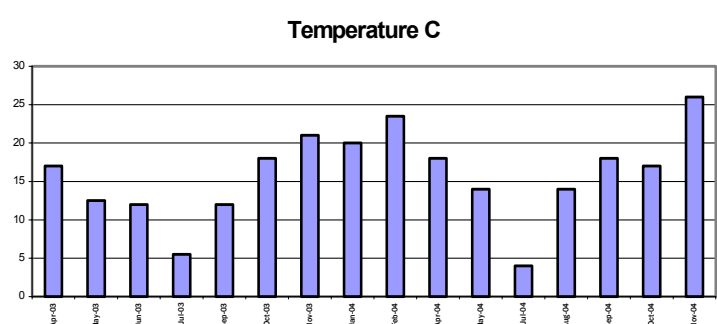
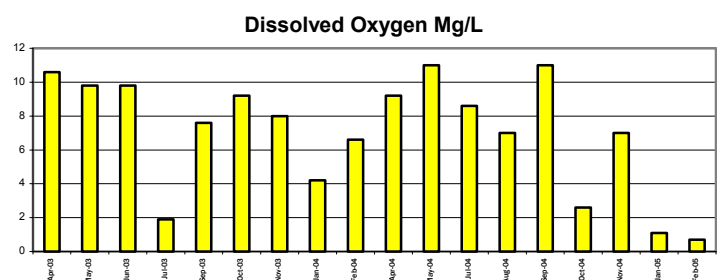
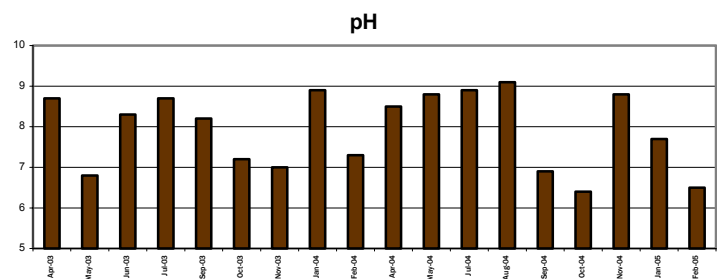
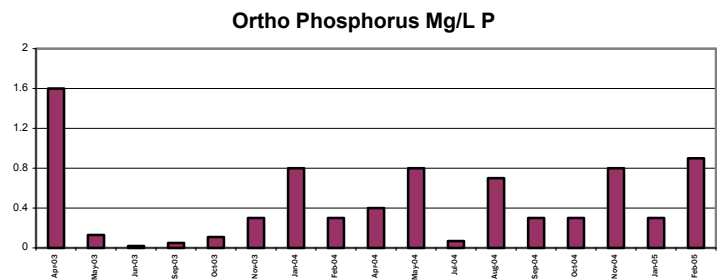
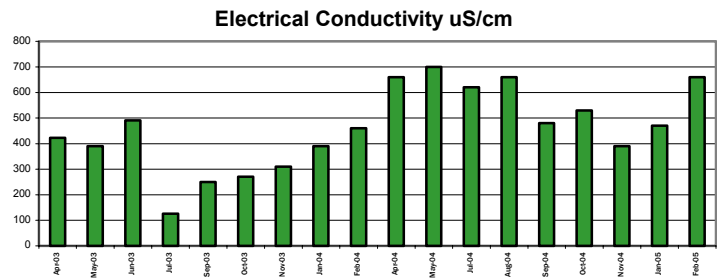
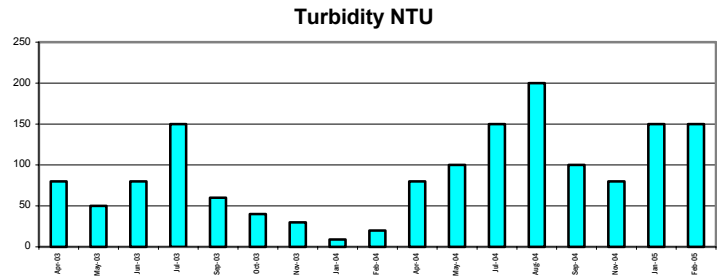
# 7.5 Coleman Ridge Dam—Coleman Ridge



## Water Quality

### Participant comments: D. Tinney, Coleman Ridge Parkcare Group

- Waist high weeds on banks. Paterson's Curse! and other weeds on the embankment.
- Turtles have reappeared and are basking on rocks on the water's edge.
- Considerable rain in October has raised water level and made the water very turbid.
- The wooden seat, which was destroyed in the fire, on the embankment of the dam has been rebuilt as have the fencing and gates in the area.
- May: While there was no algae in the surface, there was considerable release of gas from the dam floor which caused widespread and continuous bubbling on the surface. Mother and ducklings using the pond.
- Duck pontoon removed or vandalised?
- Site is still very degraded both in and out of the water.
- Banks and surroundings heavily infested with weeds.
- Weed growth right to the water's edge (oats ragwort, thistles, dandelion, Paterson's curse).
- Lots of gas bubbles escaping dam
- Many reptiles present, including black snakes, turtles and perhaps a Peron's Tree Frog.
- Dam turned a lurid green in July.
- Mother duck and six ducklings seen feeding on the banks. Ducklings in the early feathers stage, small but healthy.



## Habitat recovery



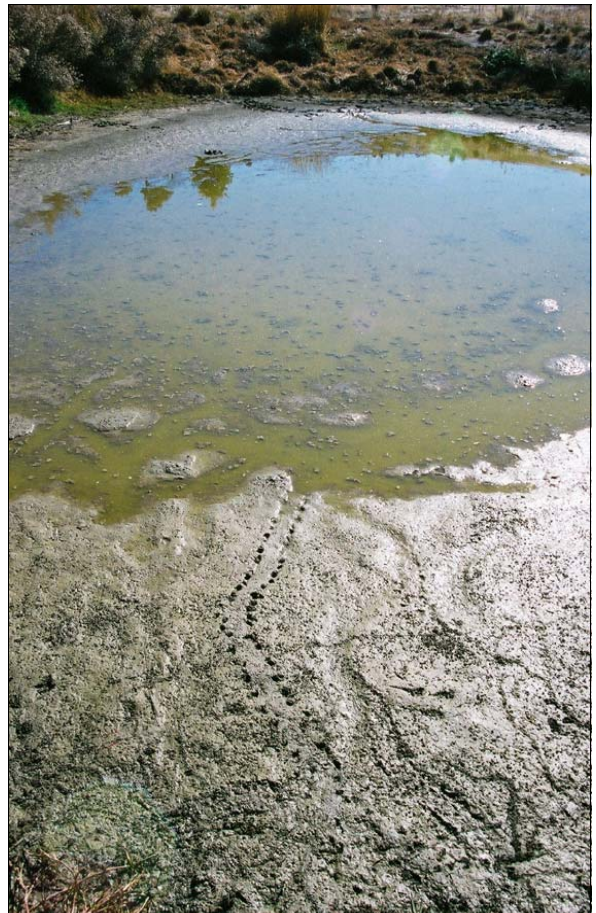
April 2003



April 2003



June 2003



May 2005



May 2005



May 2005



May 2005