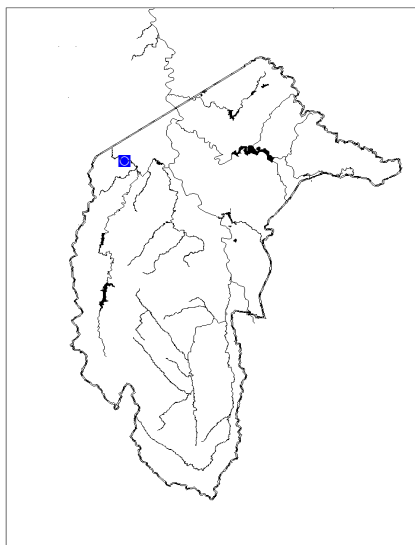


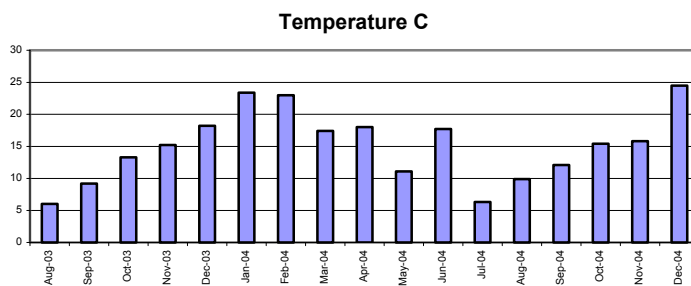
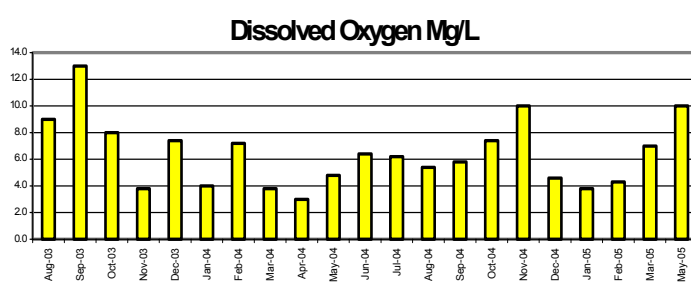
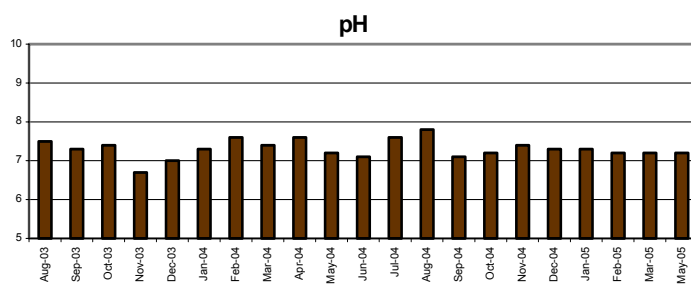
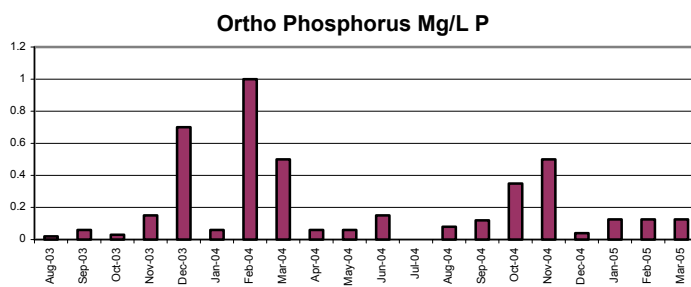
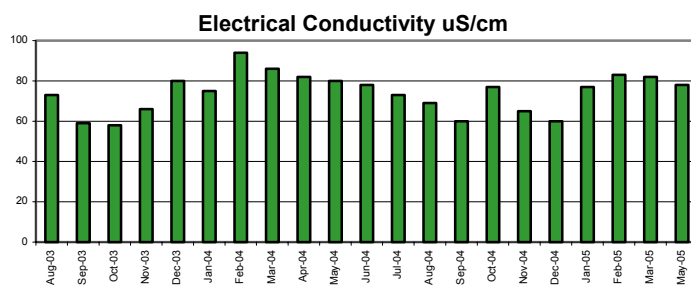
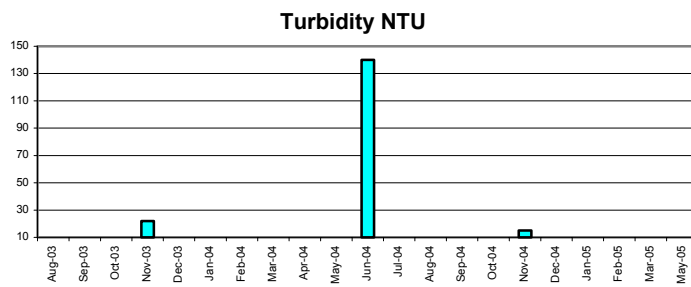
5.4 Condor Creek—Cotter Catchment



Water quality

Participant comments: V. Tanner

- Significant storm event in November caused increase run off and sedimentation.
- Algal cover went from 10% to 90–100% during spring and summer.
- Erosion cutting under Condor Creek bridge underwent repair.
- Weeds a big issue however blackberry spraying helped.
- Marked lower dissolved oxygen readings at times.
- Muddy deposits in stream riffles.
- Erosion cutting downstream from monitoring site.
- Log pile burn off causing ash in water and smoke in air.
- Rubbish thrown from cars in creek.
- Weeds continue to be a big long term problem.
- Poor regrowth on native vegetation in surrounding hills.
- Recreational motor bikes regularly use closed tracks prone to erosion.
- Blackberries and weeds getting very high making access increasingly dangerous in regard to snakes.
- Still a small but noticeable amount of ash in the water.
- Blackberries were later sprayed and road created and bridge work done improving access but changing stream morphology.
- Small waterfall forming at fallen log.
- Large fire burn off in May 2004.
- Debris barrier set up down stream
- Graffiti under bridge.



Habitat recovery



October 2003



November 2003



September 2003



December 2003



August 2004



August 2004

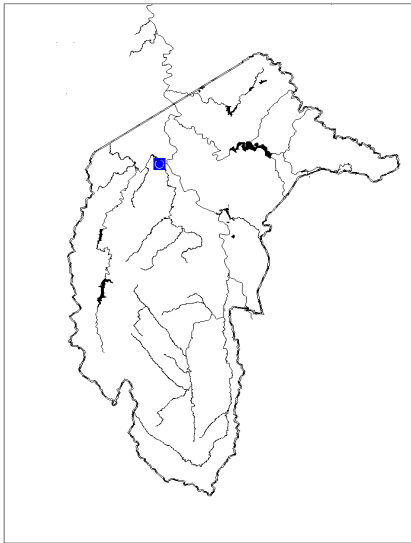


February 2005



February 2005

5.5 Lower Cotter Reserve—Cotter River

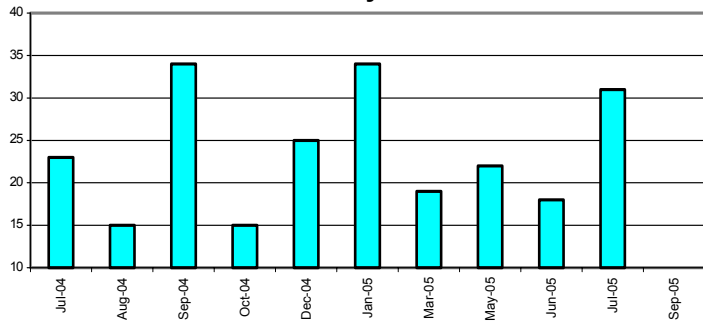


Water quality

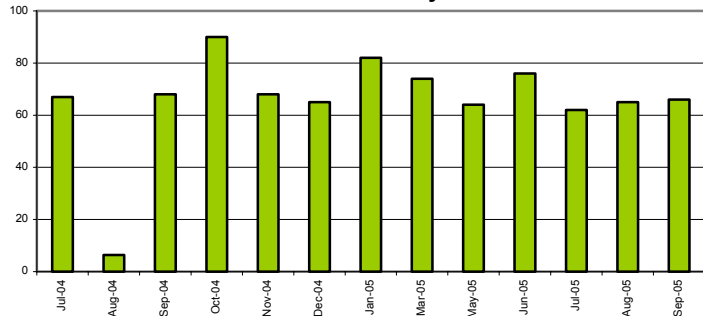
Participant comments: Victoria Tanner

- Cotter River outflow seems lighter in colour than the Murrumbidgee.
- Turbidity noticeable.
- Lots of evidence of wombats.
- Noticeable sediment plume the Cotter and dam release into Murrumbidgee and downstream.
- Removed rubbish, frog croaks, higher level and muddy bank covered. Very turbid with contrast between flows into the Murrumbidgee.
- More rubbish in the campsites as more people. Some campers swimming and fishing in river near weir.
- Very low water level with banks and rocks exposed. Small fish (3 cm seen swimming in shallows. Purple lupin like flowers in bloom, cabbage moths and brown butterflies. Talked to resident ranger.
- More rubbish than normal, removed what I could. Animal scat on bank. More water than last two months but still low in the Murrumbidgee.
- Rosellas in tree, more exposed rocky banks with small pools of water and oil slick type surface.

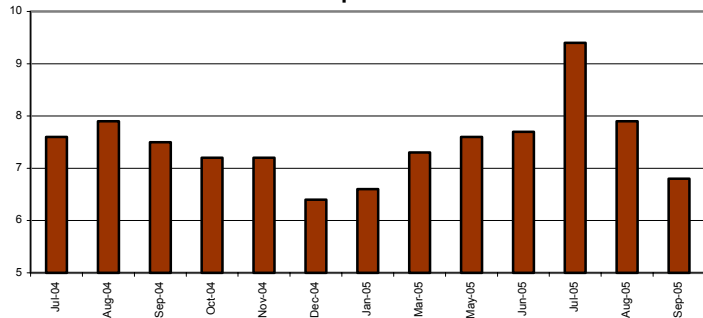
Turbidity NTU



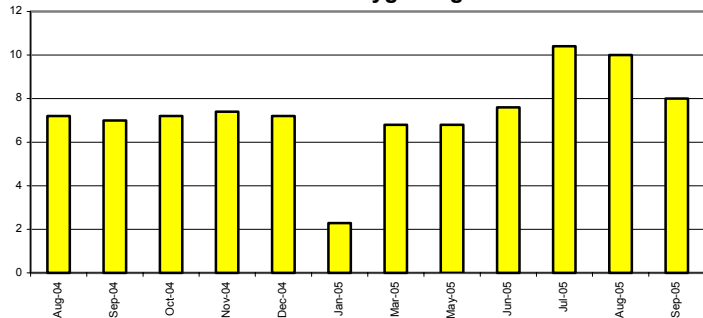
Electrical Conductivity uS/cm



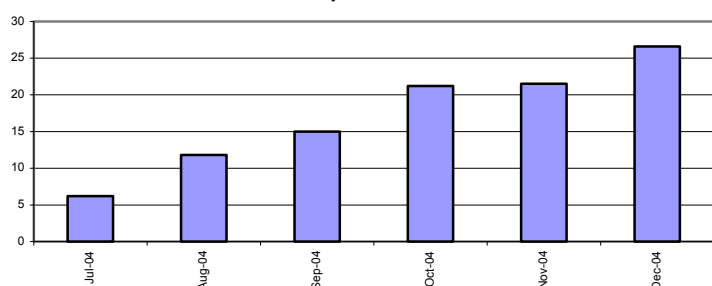
pH



Dissolved Oxygen Mg/L



Temperature C



Habitat recovery upstream



November 2003

Habitat recovery



November 2003