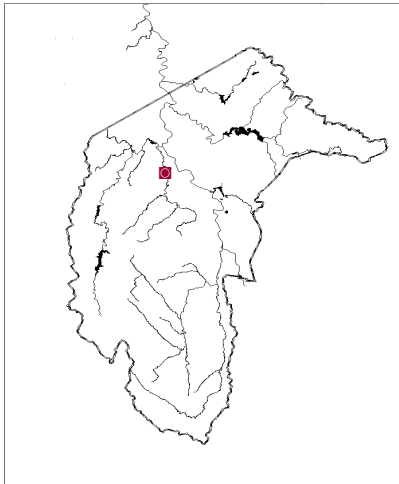


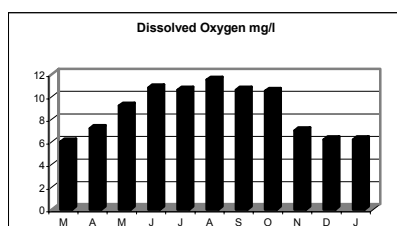
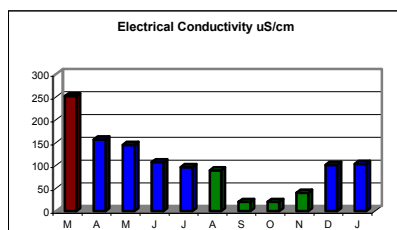
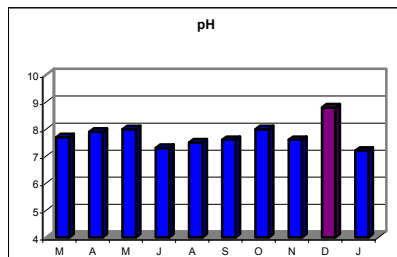
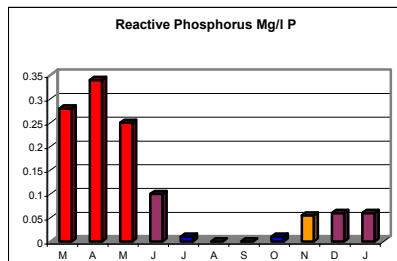
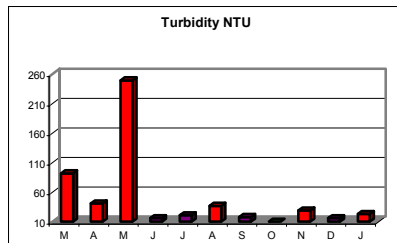
# Murray's Corner—Paddy's River



## Participant Comments: Paddys River Group

- Azolla aquatic weed a noticeable problem.
- Evidence of broadleaf weeds in all disturbed areas.
- Patches of pink/green floating weed matting 1.5 m x 6 m on western bank upstream and smaller clumps around submerged branches and in still water patches downstream.
- After rain water visibly more turbid and flowing more quickly.
- New picnic area under construction including new toilet block BBQ areas, road works; pines cleared, dangerous Casuarinas felled on western side of creek.
- Bird life increased throughout the year.
- Yellow daisies a feature in September on the severely burnt hillsides.
- (December) erosion gully leading down to water edge, silt evident in bed of water. So many weeds everywhere! Looks weedy overgrown and uncared for alas!

## Water Quality



## Habitat Recovery



February 2003



August 2003



November 2003



February 2004