

Chapter 7: Kambah Catchment

7.1 Catchment profile

Location Murrumbidgee River; junction with Tuggeranong Creek to junction with Cotter River.

Area 6,063 ha

Landuse 65% Rural, 30% Conservation, 3% Forestry, 2% Urban.

Environmental values Primary: Conservation
 Secondary: Domestic water supply, irrigation and stock water, recreation—swimming and boating, waterscape, aquatic habitat, discharge—stormwater.

Pre-fire general description:

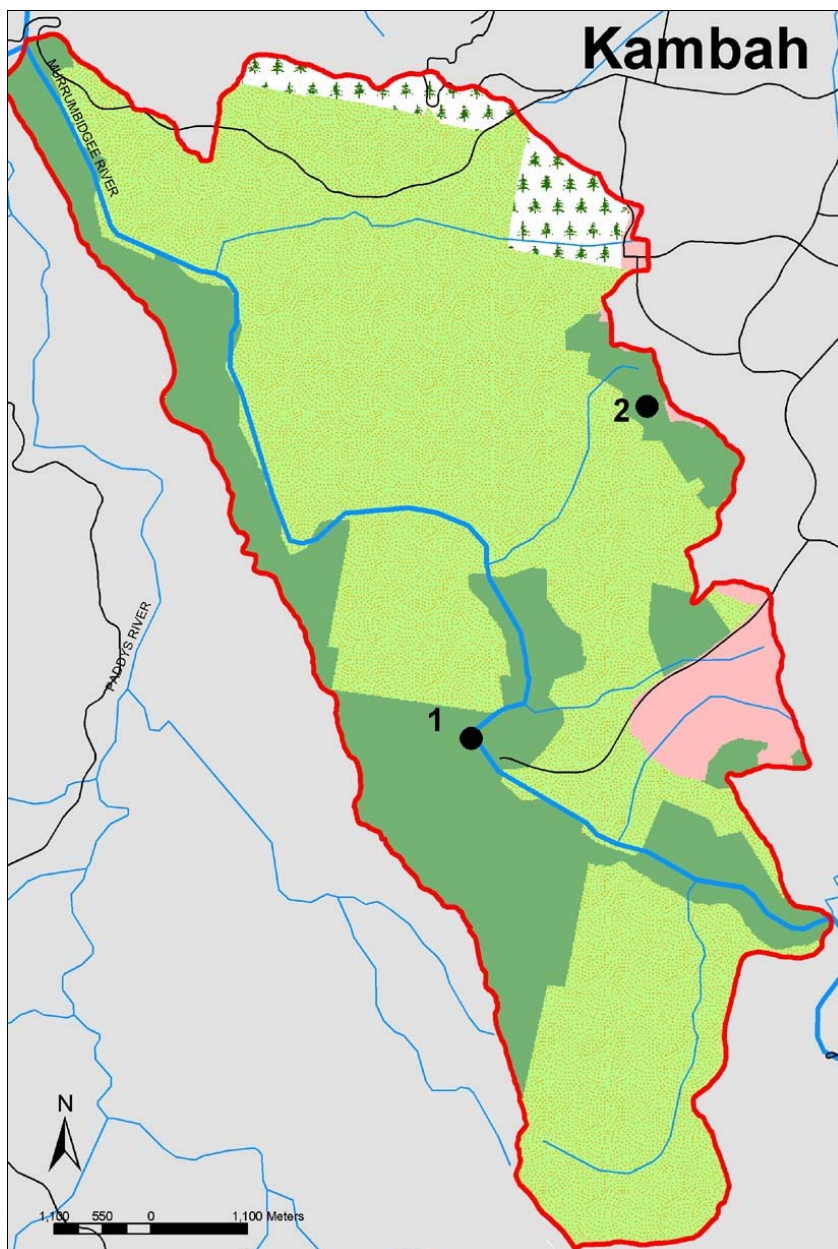
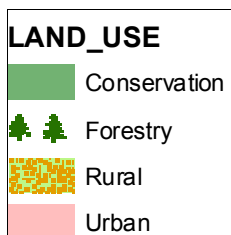
The terrain is generally low and hilly. The Murrumbidgee flows through the Bullen Range Nature Reserve, which includes Red Rock Gorge, an area of high cliffs and rugged rock formations. River vegetation is well developed with stands of river oak extending along banks of large pools. Aquatic habitats are diverse and the large, deep pools support native fish, crayfish, water birds, platypus and the eastern water rat.

* Think water act water Volume 3 November 2003

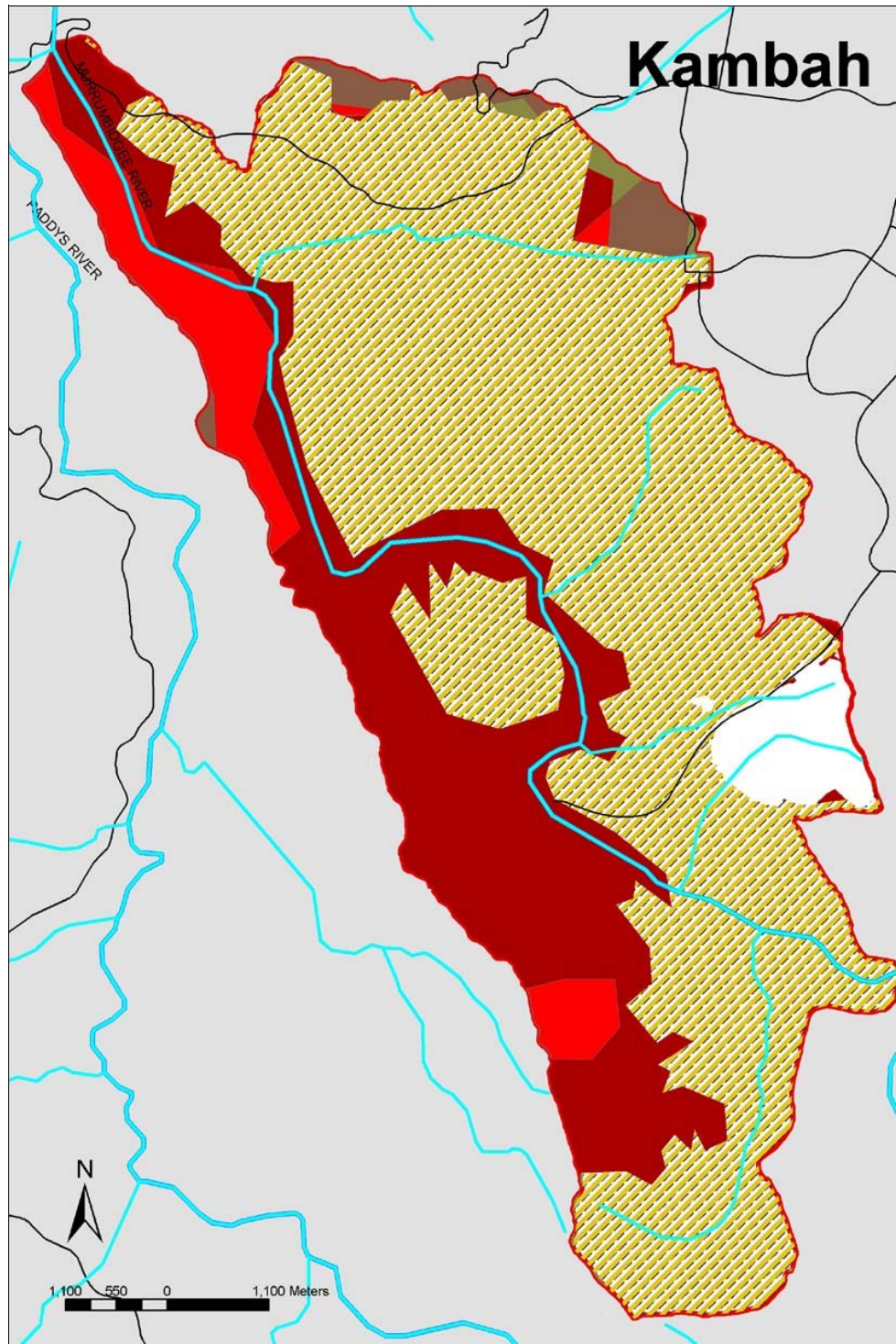
7.2 Monitoring sites

1. Kambah Pool—
 Murrumbidgee River,
 Northing 6081500
 Easting 683250

2. Coleman Ridge Dam—
 Coleman
 Ridge
 Northing
 6081500
 Easting 683250



7.3 Kambah bushfire severity



Monthly average flow

Month
Avg Flow (ML)

January
507

February
341

March
360

April
631

May
353

June
388

July
925

August
913

September
868

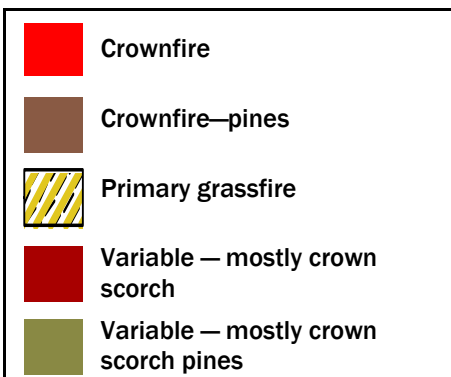
October
837

November
642

December
493

Total 7,259

Think water act water
Volume 3 November
2003



The Kambah Catchment was significantly impacted by crownfire along the Murrumbidgee River corridor and the Bulleen Range Nature Reserves. Vegetation recovery remains slow in areas dominated by steep terrain and active gully erosion.

In November 2003 a substantial rain event washed vast amounts of ash, sediment and other debris into the river at Kambah pool. A turbidity reading of 200 NTU's was recorded during this month at that site.

Habitat recovery programs were undertaken at the Coleman Ridge Dam, home of the Long Necked Turtle.