

Chapter 9: Coppins Catchment

9.1 Catchment profile

Location	Molonglo River; Scrivener Dam wall to junction with Murrumbidgee River
Area	6,936 ha
Landuse	68% Rural, 27% Forestry, 4% Conservation, 1% Urban.
Environmental values	Primary: Conservation Secondary: Recreation—boating, waterscapes, discharge—stormwater, stock water, aquatic habitat.

Pre-fire General description The section of the Molonglo River below Scrivener Dam flows through undulating to hilly country, culminating in a series of rocky gorges and outcrops downstream. Pine plantations, riverine willows and flow regimentation modify the reach from the dam to Coppins Crossing. Nevertheless, it has important scenic and recreational value, particularly in association with activities in the adjacent forests.

Downstream from Coppins Crossing the river has more natural character and increasing ecological potential. Valley surrounds have largely been cleared for rural uses. Close to the Murrumbidgee River confluence, treated effluent from the Lower Molonglo Water Quality Control Centre further modifies the streamflow and water quality.

* Think water act water Volume 3 November 2003

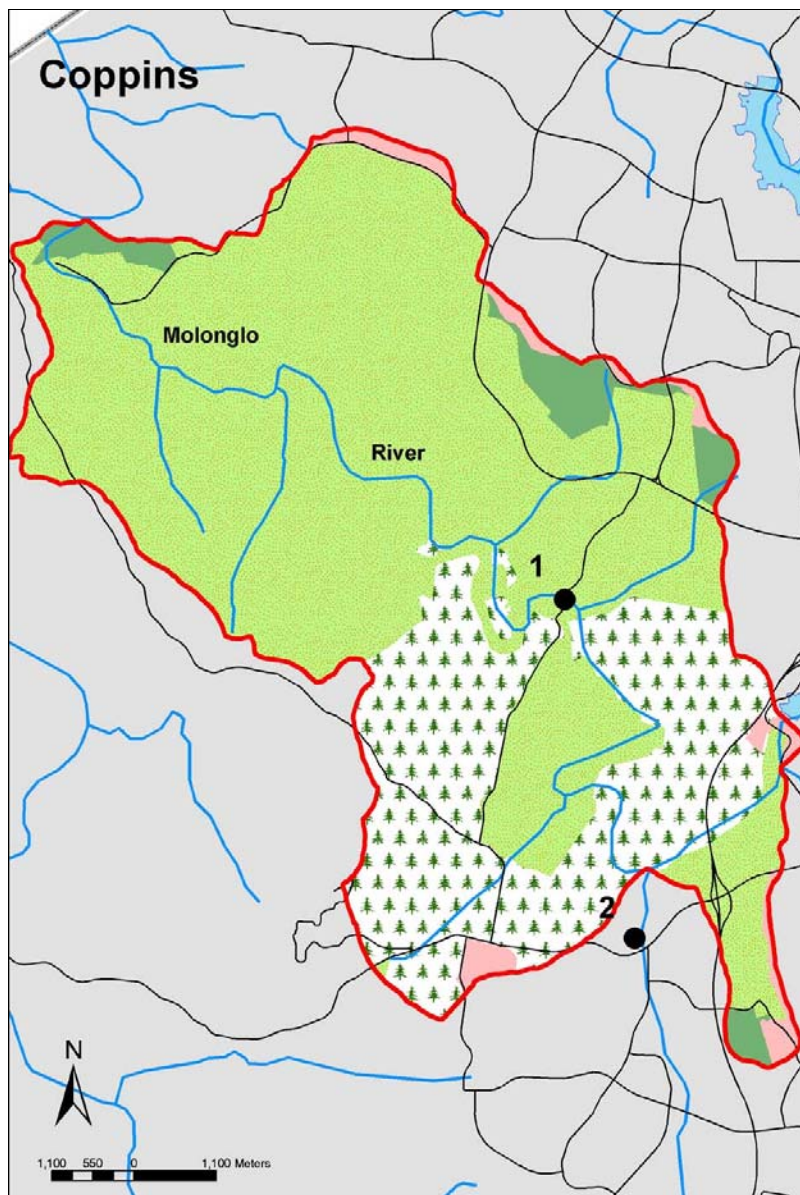
9.2 Monitoring Sites

1. Coppins Crossing—Molonglo River

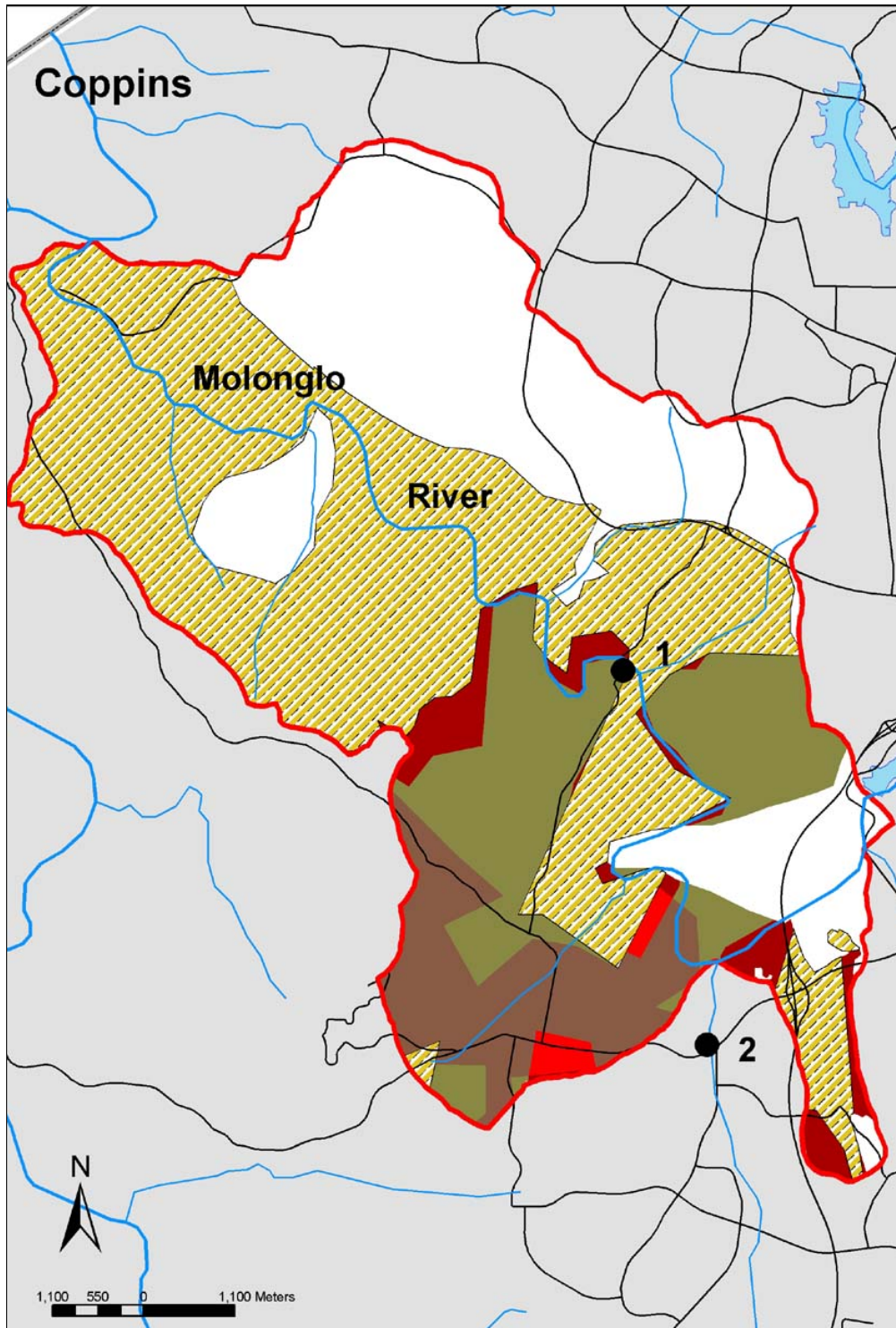
Northing 60893284 Easting 685402

2. Western Creek Gross Pollutant Trap—Weston Creek

Northing 6088650 Easting 686300



9.3 Coppins bushfire severity



Monthly average flow

Month Avg Flow (ML)

January 349

February 154

March 281

April 317

May 262

June 299

July 980

August 728

September 739

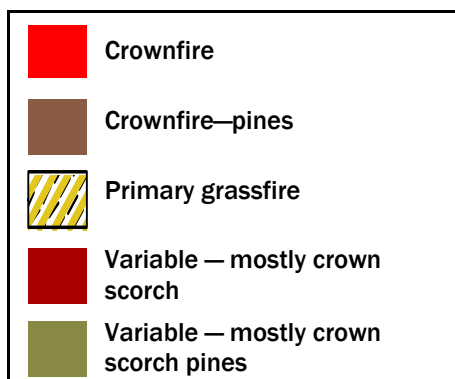
October 518

November 437

December 296

Total 5,362

Think water act water
Volume 3 November 2003



Firestorm conditions along the Molonglo River valley and Stromlo Pines Forest eventually went on to devastate the suburbs of Duffy and Holder.

The monitoring site of Weston Creek provided information about urban stormwater pollution in a fire affected urban catchment. Toxic runoff from burnt houses was a major concern.

Coppins Crossing was the site of a fish kill immediately after the fires with dissolved oxygen dropping to as little as 2.7 Mg/L the lowest reading from the CAMPFIRE program.