

Chapter 4: Paddys River Catchment

4.1 Catchment profile

Location	Paddys River; headwaters to junction with Cotter River
Area	24,712 ha
Landuse	40% Conservation, 30% Rural, 30% Forestry
Environmental values	Primary: Drainage Secondary: Aquatic habitat, domestic water supply, stock water, recreation—swimming, and landscape.

Pre-fire general description: The headwaters of Paddys River are in the forested zone of Namadgi National Park and Tidbinbilla Nature Reserve. The topography is undulating to steep. The water quality of the river is high.

The middle reaches run through a rural sub-catchment, although the riverbanks are largely unmodified. The topography is undulating to hilly. Vegetation is a mixture of improved and native pasture and scattered trees. Sandy topsoils overlay thick clay subsoils. Land management practices have resulted in sheet and gully erosion.

Natural forest and pine plantations surround the lower reaches. The topography is hilly to steep. Shallow sandy topsoils overlay clay subsoils. There is localised soil erosion from logged areas, track and firebreaks.

* Think water act water Volume 3 November 2003

4.2 Monitoring sites

1. Murrays Corner—Paddy’s River
Northing 6084870 Easting 677393

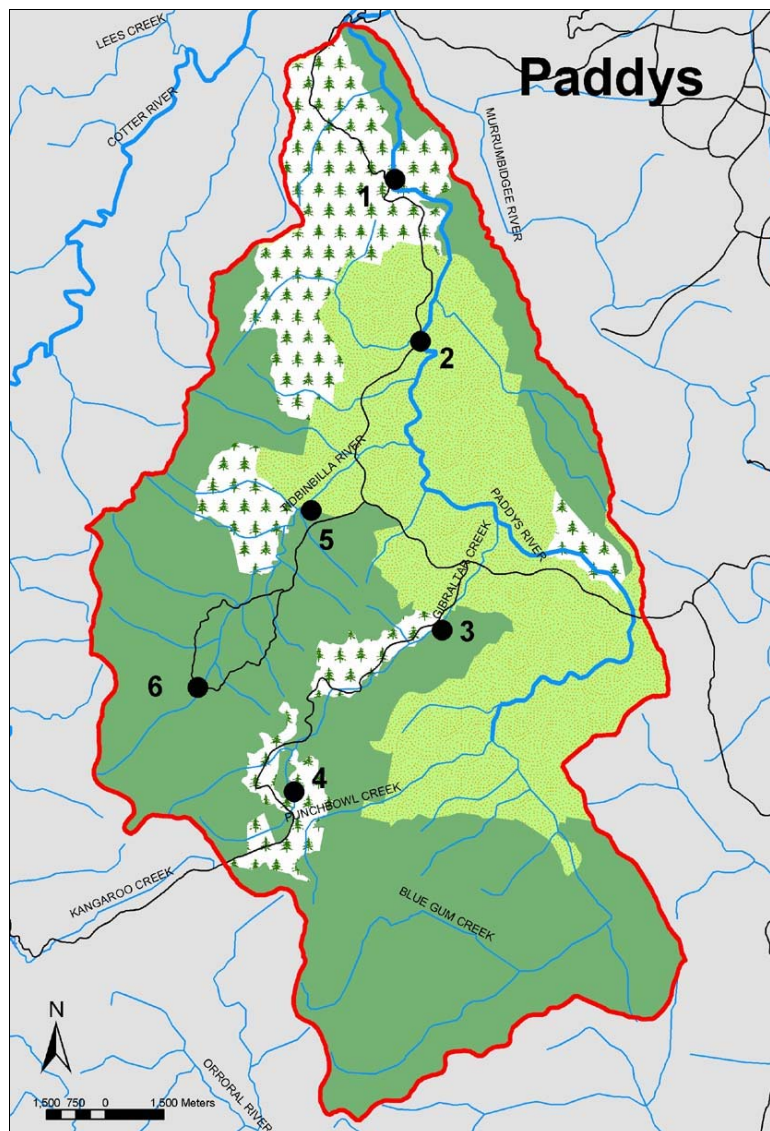
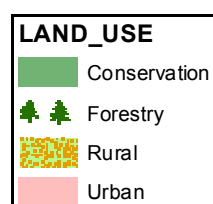
2. Flints Crossing—Paddy’s River
Northing 6080706 Easting 678024

3. Gibraltar Creek Lower Site—Gibraltar Creek
Northing 6073841 Easting 678753

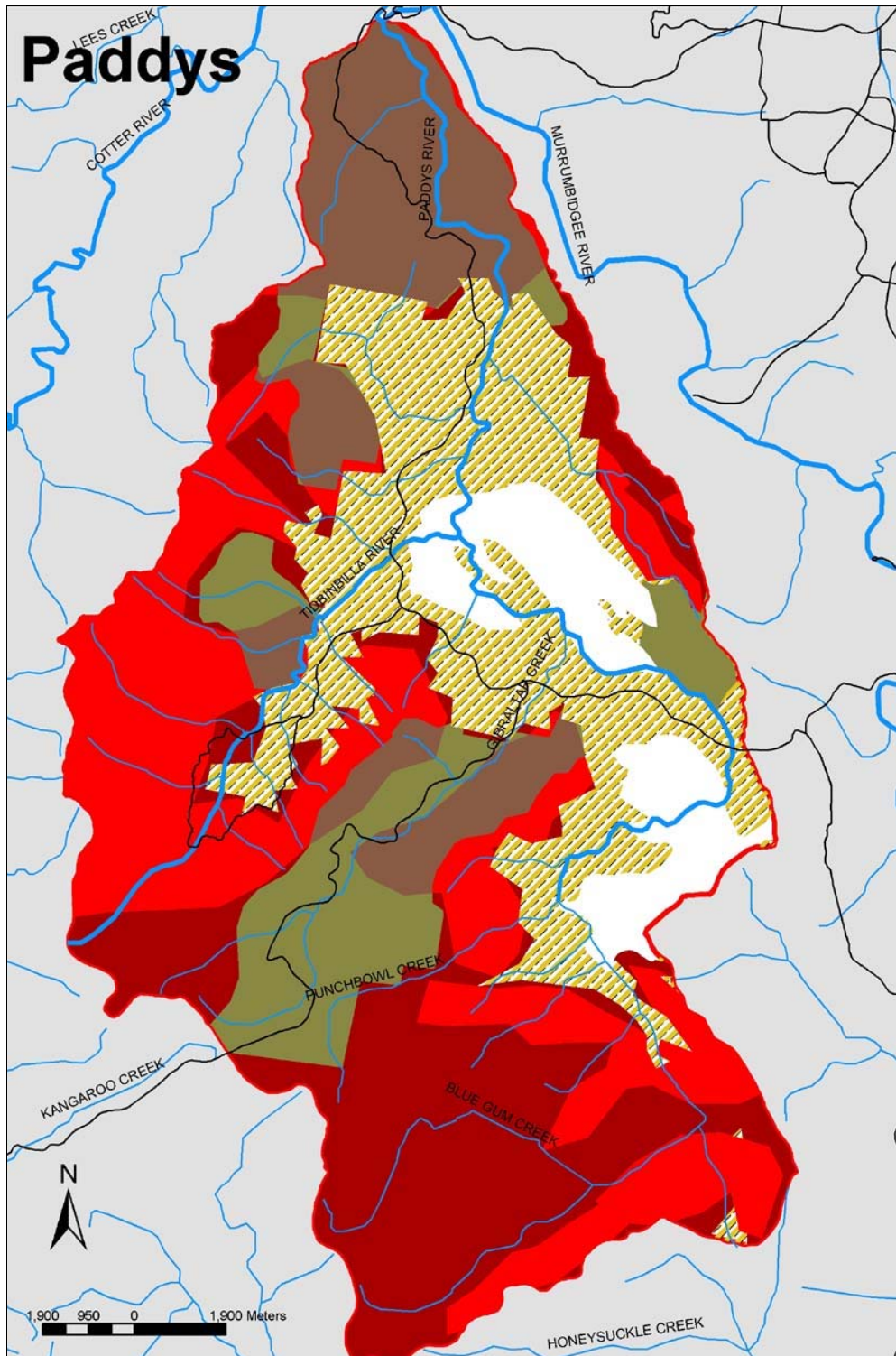
4. Gibraltar Creek Upper Site—Gibraltar Creek
Northing 6068906 Easting 674810

5. Tidbinbilla Lower Site—Tidbinbilla River
Northing 6076657 Easting 675138

6. Tidbinbilla Upper Site—Tidbinbilla River
Northing 6071855 Easting 672351



4.3 Bushfire severity

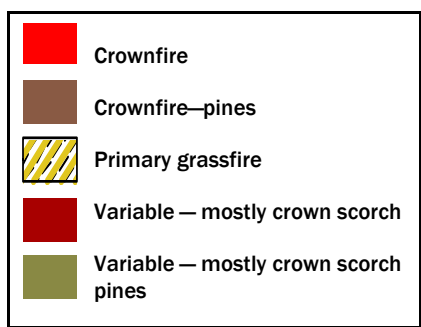


Monthly average flow

Avg month Flow (ML)

January	2,610
February	1,866
March	1,684
April	3,256
May	1,939
June	2,147
July	4,820
August	5,068
September	4,915
October	5,096
November	3,599
December	2,799
Total	39,799

Think water act water Volume 3 November 2003



Extensive crown and crown scorch fire burnt through much of the Namadgi National Park, Tidbinbilla Nature Reserve and forestry areas. Grass fires burnt through most of the rural grazing land.

The severity of the fires left an extensive area of soil exposed and vulnerable to erosion. Active post fire erosion and sedimentation of streams occurred throughout the catchment. CAMPFIRE water quality results revealed increases in turbidity, phosphorus and electrical conductivity levels in the first few months after the fires.