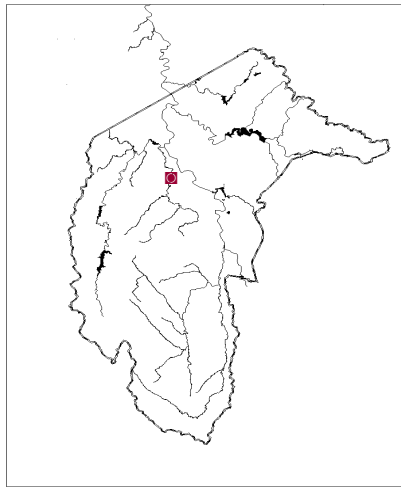


Part: 5 Site Information Results

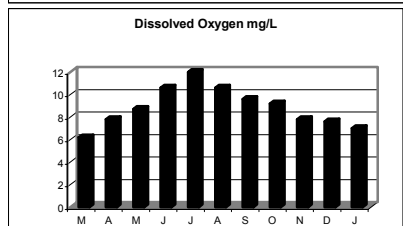
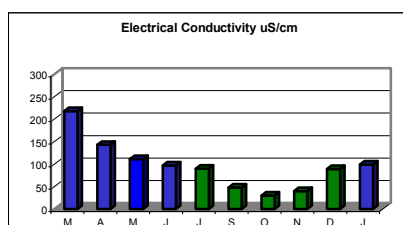
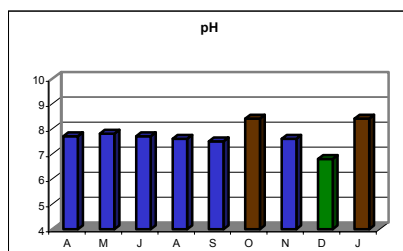
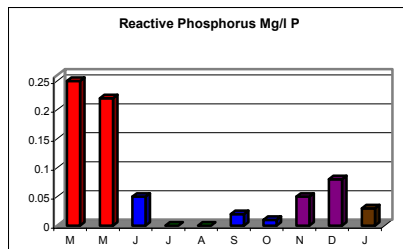
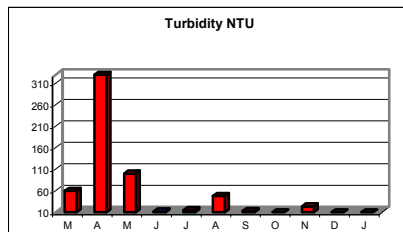
Flints Crossing—Paddy’s River



Participant Comments: Paddys River Group

- Water visibly more turbid and flowing faster after rain.
- Farmer planted trees along fence line.
- July had little wrens, white cockatoos, frogs, and insects.
- September, after heavy rains branches and twigs washed up to concrete bridge/pipes. Evidence of cattle access with mud around the water edge.
- March, Black ash along creek bank, very turbid water with fine particles and discoloured water.
- November, banks disturbed and muddy, twig and leaf debris floating and trapped around pipes, water murky.
- December cattle access to the stream.

Water Quality



Habitat Recovery



February 2003



July 2003



November 2003



February 2004