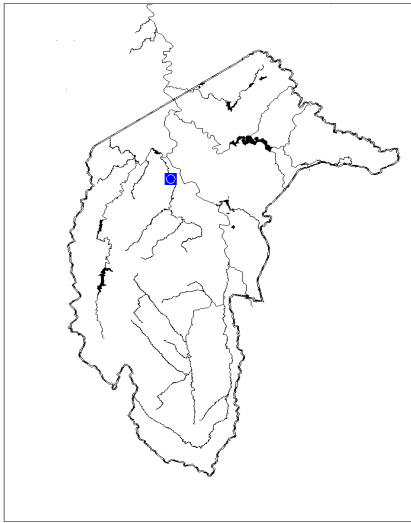


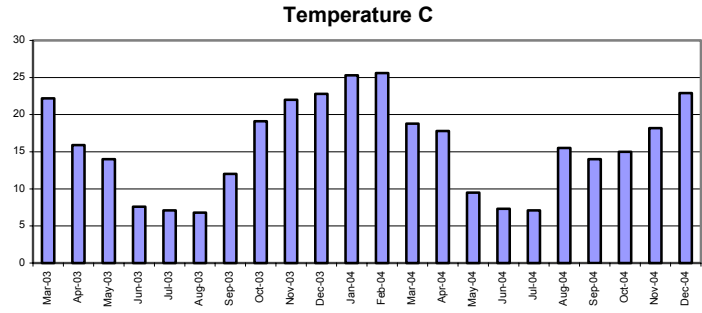
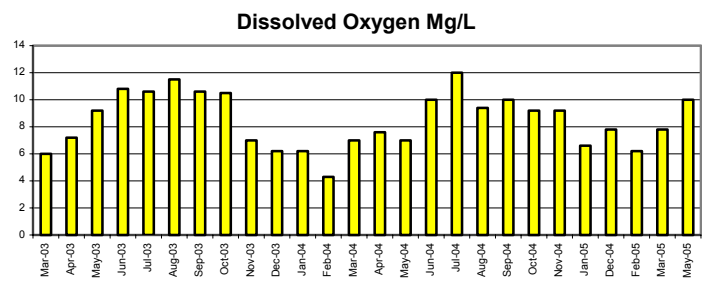
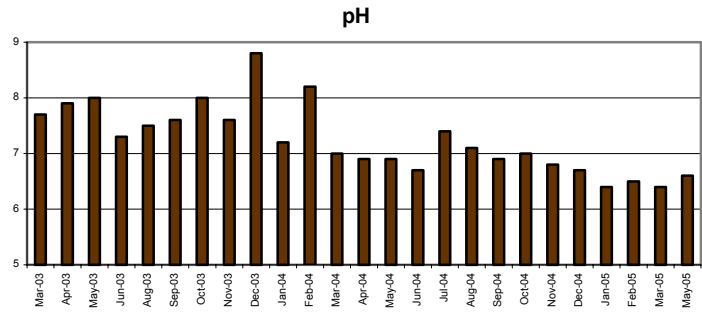
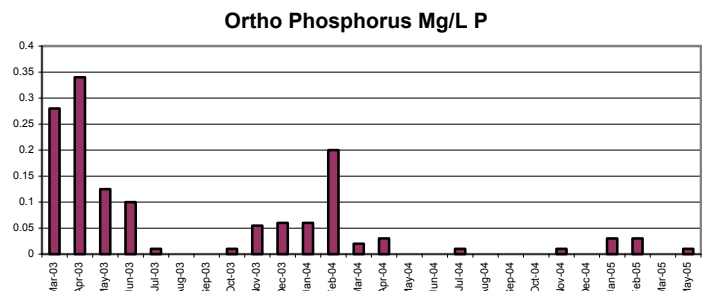
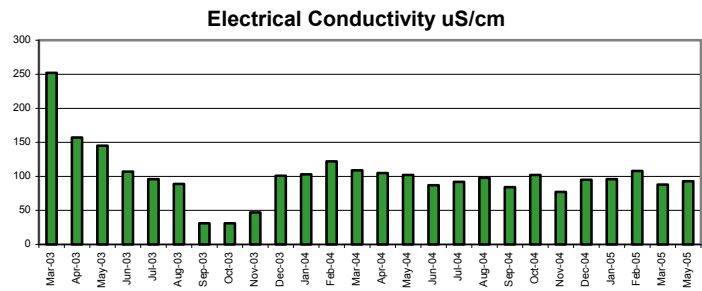
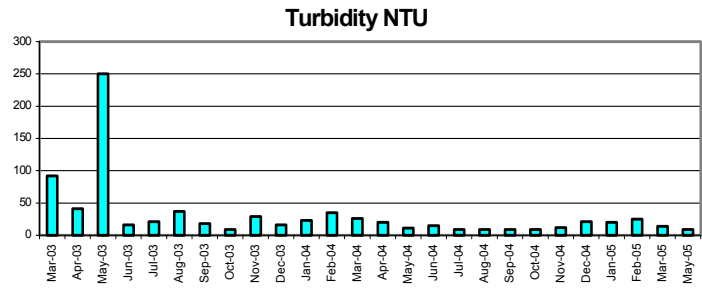
4.4 Murrays Corner—Paddys River



Water quality

Participant comments: Paddys River Group

- Azolla aquatic weed a noticeable problem.
- Evidence of broadleaf weeds in all disturbed areas.
- Patches of pink/green floating weed matting 1.5 m x 6 m on western bank upstream and smaller clumps around submerged branches and in still water patches downstream.
- After rain, water visibly more turbid and flowing more quickly.
- New picnic area under construction including new toilet block BBQ areas, road works; pines cleared, dangerous Casuarinas felled on western side of creek.
- Bird life increased throughout the year.
- Yellow daisies a feature in September on the severely burnt hillsides.
- (December) erosion gully leading down to water edge, silt evident in bed of water. So many weeds everywhere! Looks weedy overgrown and uncared for alas!
- Paddy's River road project has been completed with associated stabilisation of area.
- Evidence of trail bikes, 4WD and motor bikes in area, gates left open.
- Some epicomus growth from first year did not survive second.
- Sedimentation greatly reduced from year 1 and largely stabilised.
- Some casuarinas dying; <40% recovering.
- Algae increased in times of low flow.
- Turbidity remained low despite clearing activities.



Habitat recovery upstream



February 2003



August 2003



November 2003



February 2004



May 2004



August 2004



November 2004



February 2005



March 2005

Habitat recovery downstream



February 2003



August 2003



November 2003



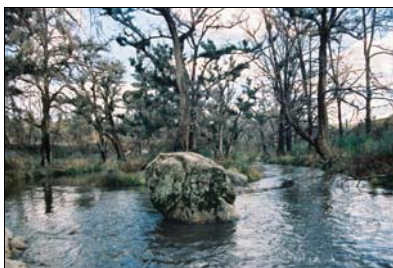
January 2004



March 2004



May 2004



August 2004

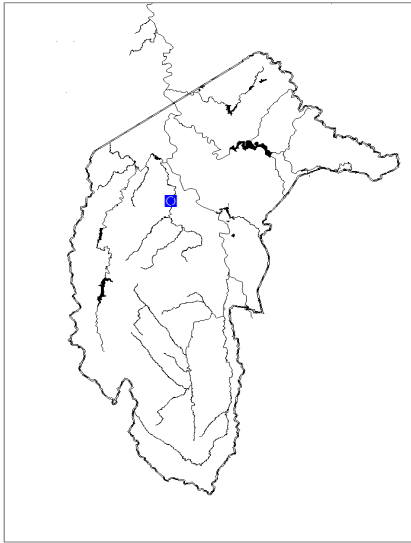


February 2005



March 2005

4.5 Flints Crossing—Paddys River

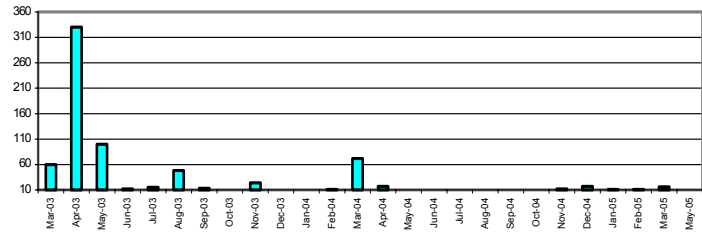


Water quality

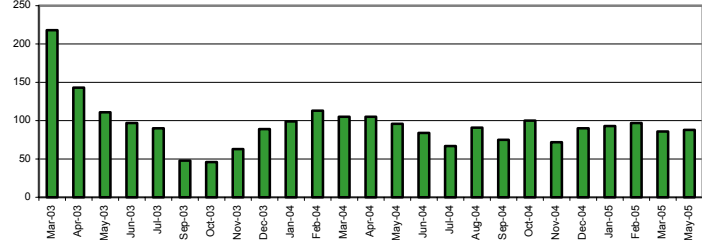
Participant comments: Paddys River Group

- Algae increased in times of low flow.
- Water visibly more turbid and flowing faster after rain.
- Farmer planted trees along fence line.
- July had little wrens, white cockatoos, frogs, and insects.
- September, after heavy rains branches and twigs washed up to concrete bridge/pipes. Evidence of cattle access with mud around the water edge.
- March, Black ash along creek bank, very turbid water with fine particles and discoloured water.
- November, banks disturbed and muddy, twig and leaf debris floating and trapped around pipes, water murky.
- December cattle access to the stream.
- Sheep and cattle using crossing
- Edges of stream eroded b cattle movement.
- Blackberries, forget-me-nots and other exotics prominent and thrived during drought.
- Native reeds reduced.
- Sedimentation greatly reduced from year 1 and largely stabilised.
- There was evidence of a small wash-out on the southern side of the bridge since our last month which flushed out some of the filaments.

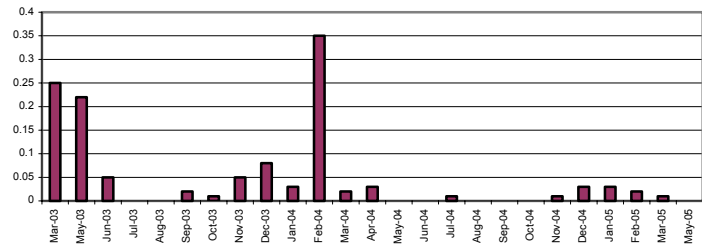
Turbidity NTU



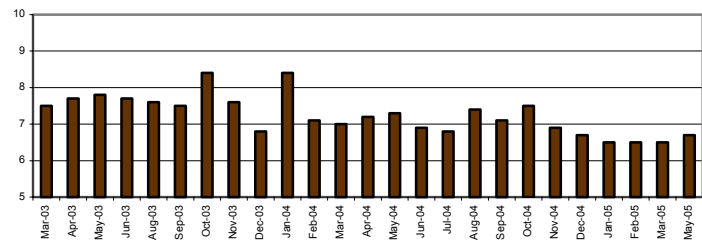
Electrical Conductivity uS/cm



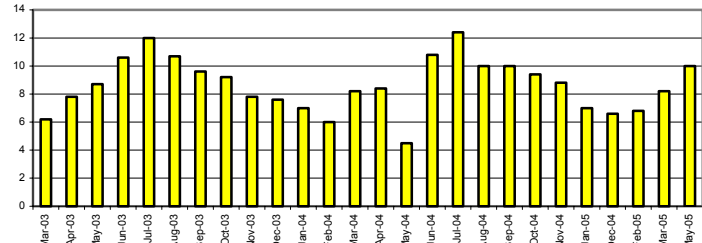
Ortho Phosphorus Mg/L P



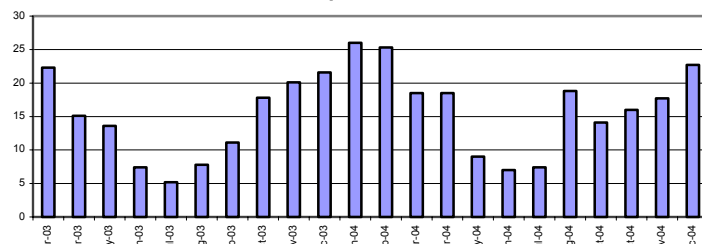
pH



Dissolved Oxygen Mg/L



Temperature C



Habitat recovery upstream



February 2003



March 2003



November 2003



January 2004



March 2004



August 2004



October 2004



February 2005



May 2005

Habitat recovery downstream



February 2003



March 2003



November 2003



February 2004



March 2004



August 2004



October 2004



February 2005



May 2005