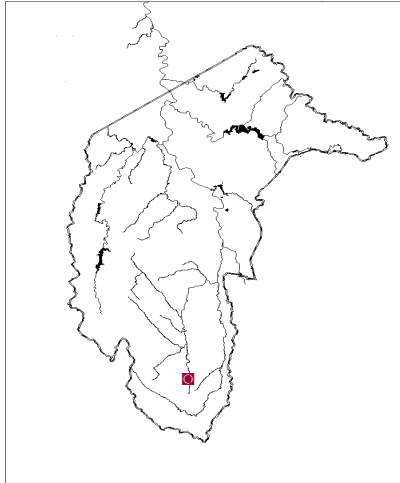


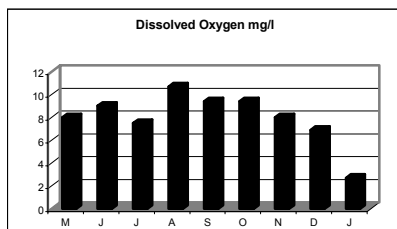
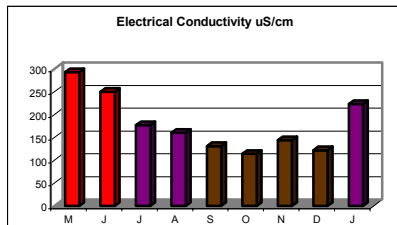
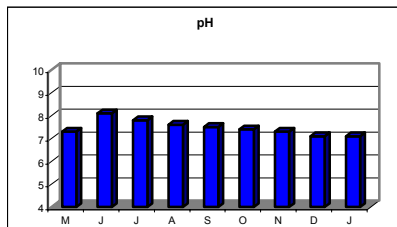
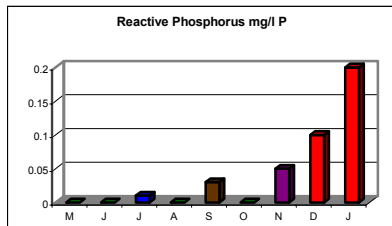
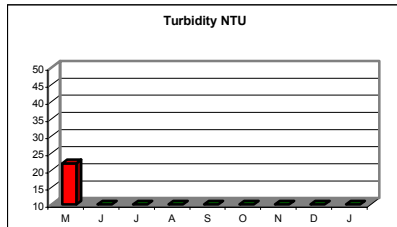
Hospital Creek South—Gudgenby



Participant Comments: M. Chalk, C. Horan

- May: Plants in and around the creek at this location appeared to be healthy. The immediate location was not affected by the bushfires.
- July: Aquatic plant growth has increased considerably in the last month.
- September: Aquatic plants continue to grow.
- November: Water levels through the length of Hospital Creek have dropped markedly in the last month. Given the sustained flow rates in Bogong Creek and the Gudgenby River, suspect this drop has more to do with the nature of the catchment rather than high water temps and evaporation as the creek crosses fire blackened open ground.
- Huge increases in phosphorus (see page 15).

Water Quality



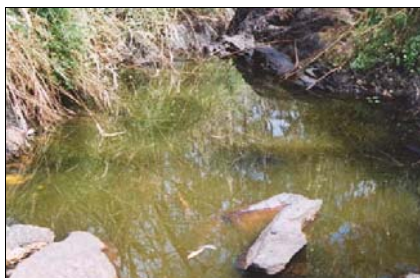
Habitat Recovery



Hospital Creek South



Bacteria dominated pond high in turbidity and phosphorus



Algae dominated pond



Back country walking group